

SILICON EARTH

The inward Journey

This experiential landmark will take from local soil the same materials that will rise above the horizon, creating a counter monument to literally immerse the diverse communities of San Jose in their shared environment.

'Silicon Earth' is a mountain and a valley. A huge staircase guides the audiences from and towards

the earth. The inward journey creates awareness and forms a metaphor for the direction humanity needs to take to establish a sustainable future.

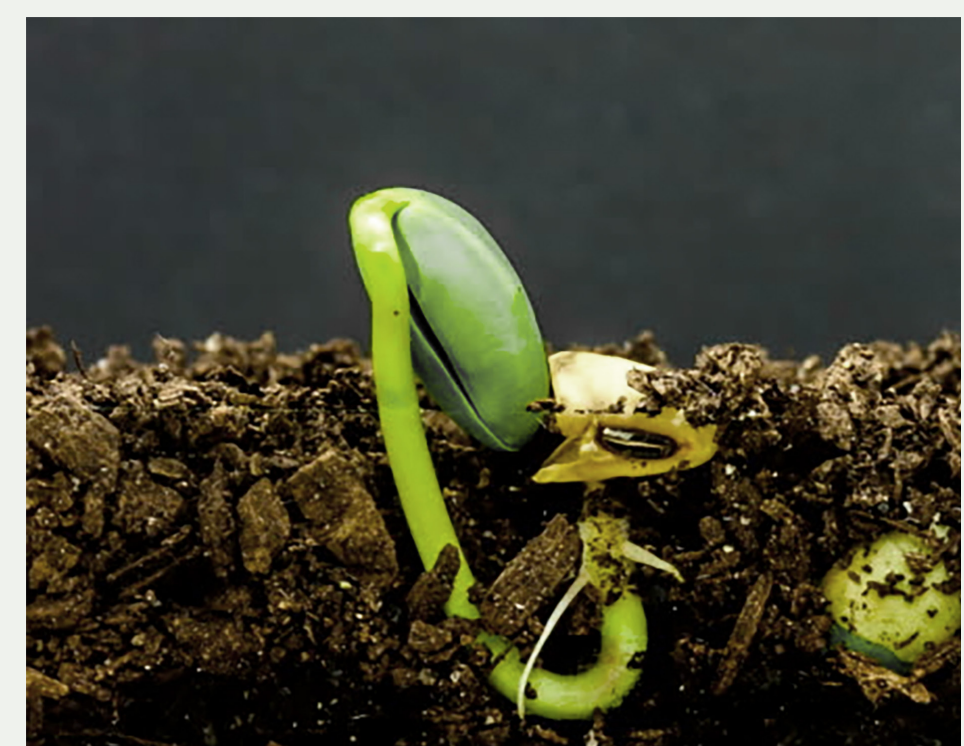
People can descend and climb, connect and contemplate, choose their own direction, while the relationship between earth and humanity is felt and remains present.



Companies and communities can sponsor an earthlayer in the project that includes physically excavating and building that part of the landmark.

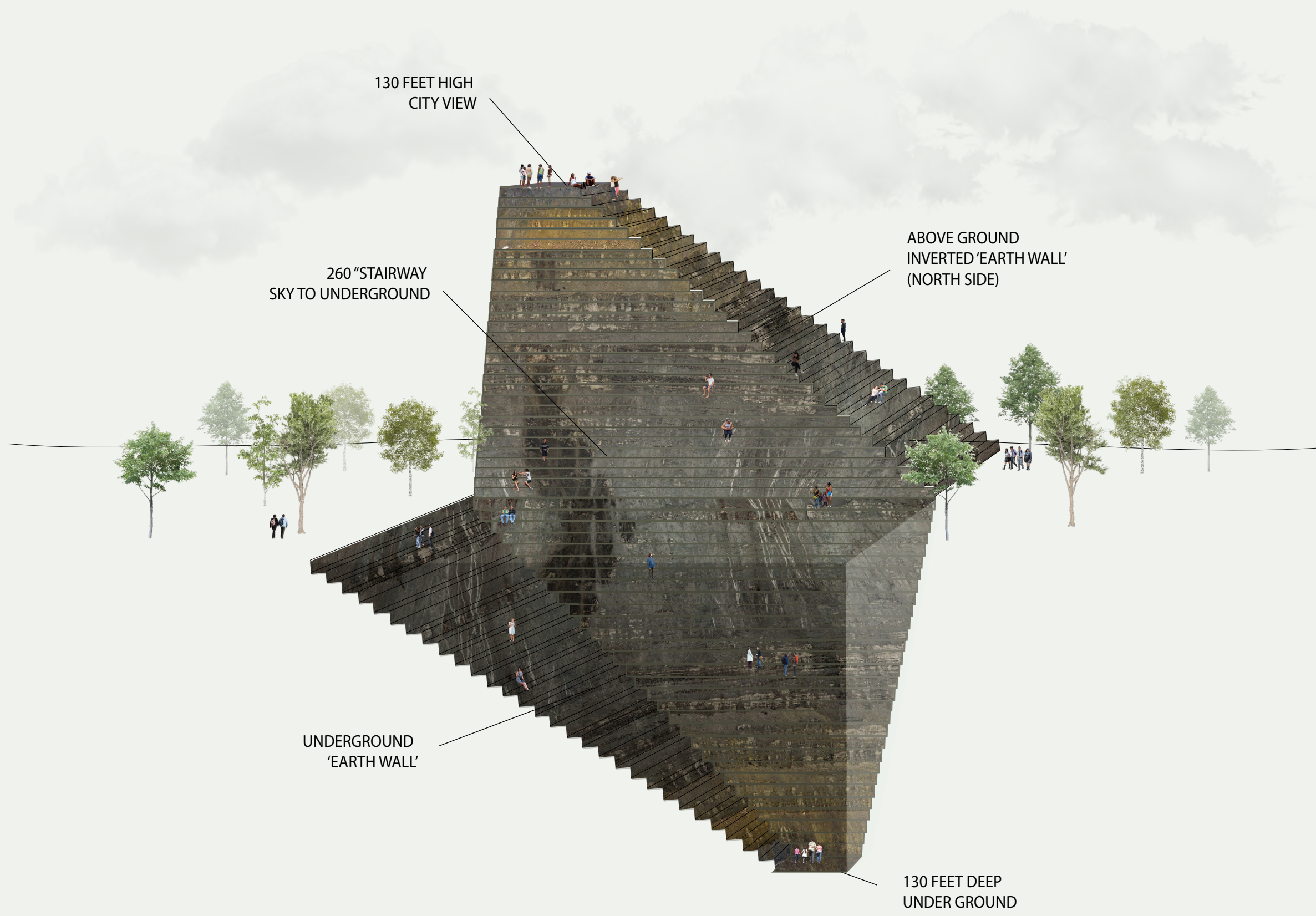
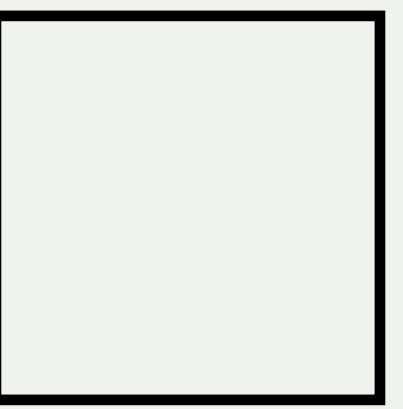


We use exactly what we take.

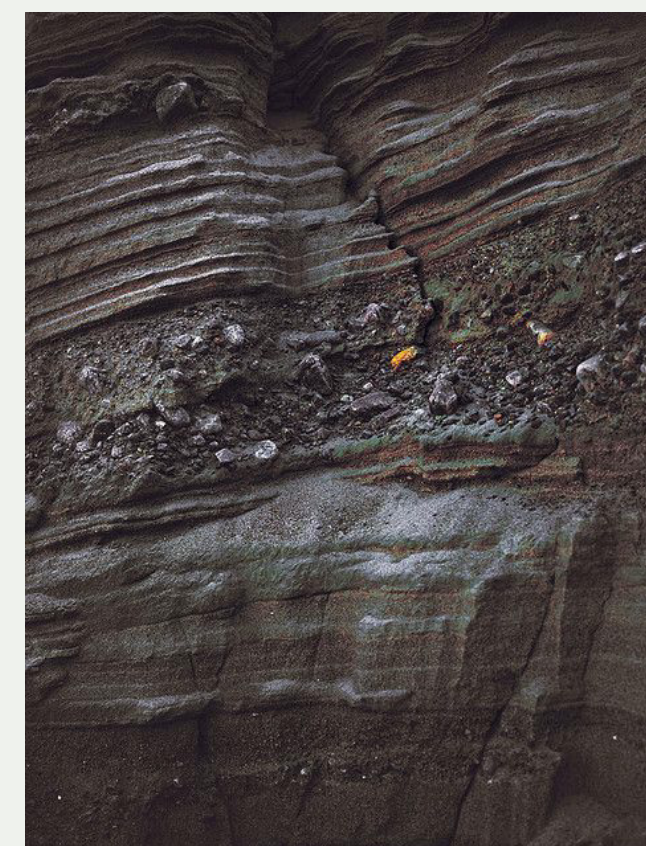
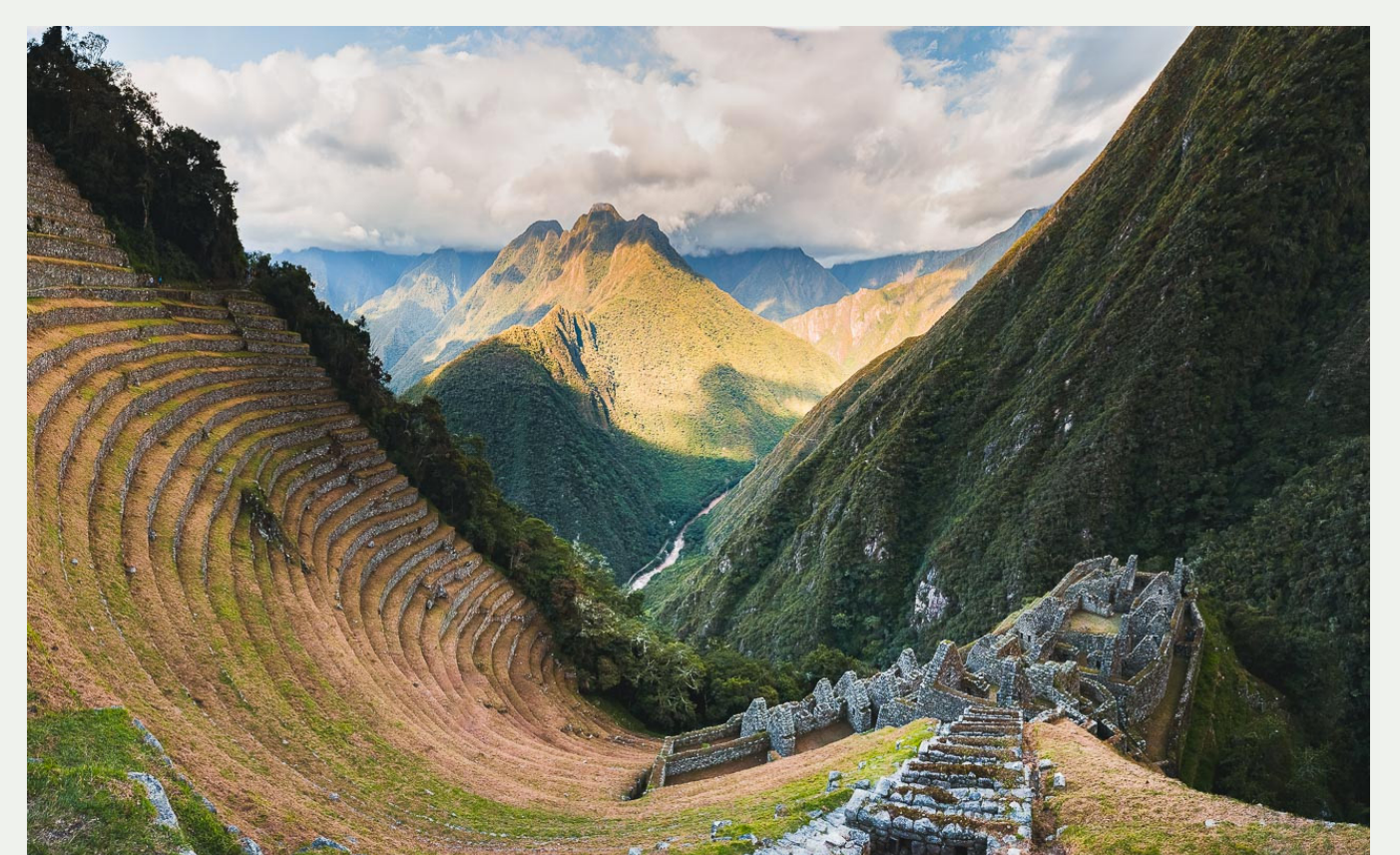
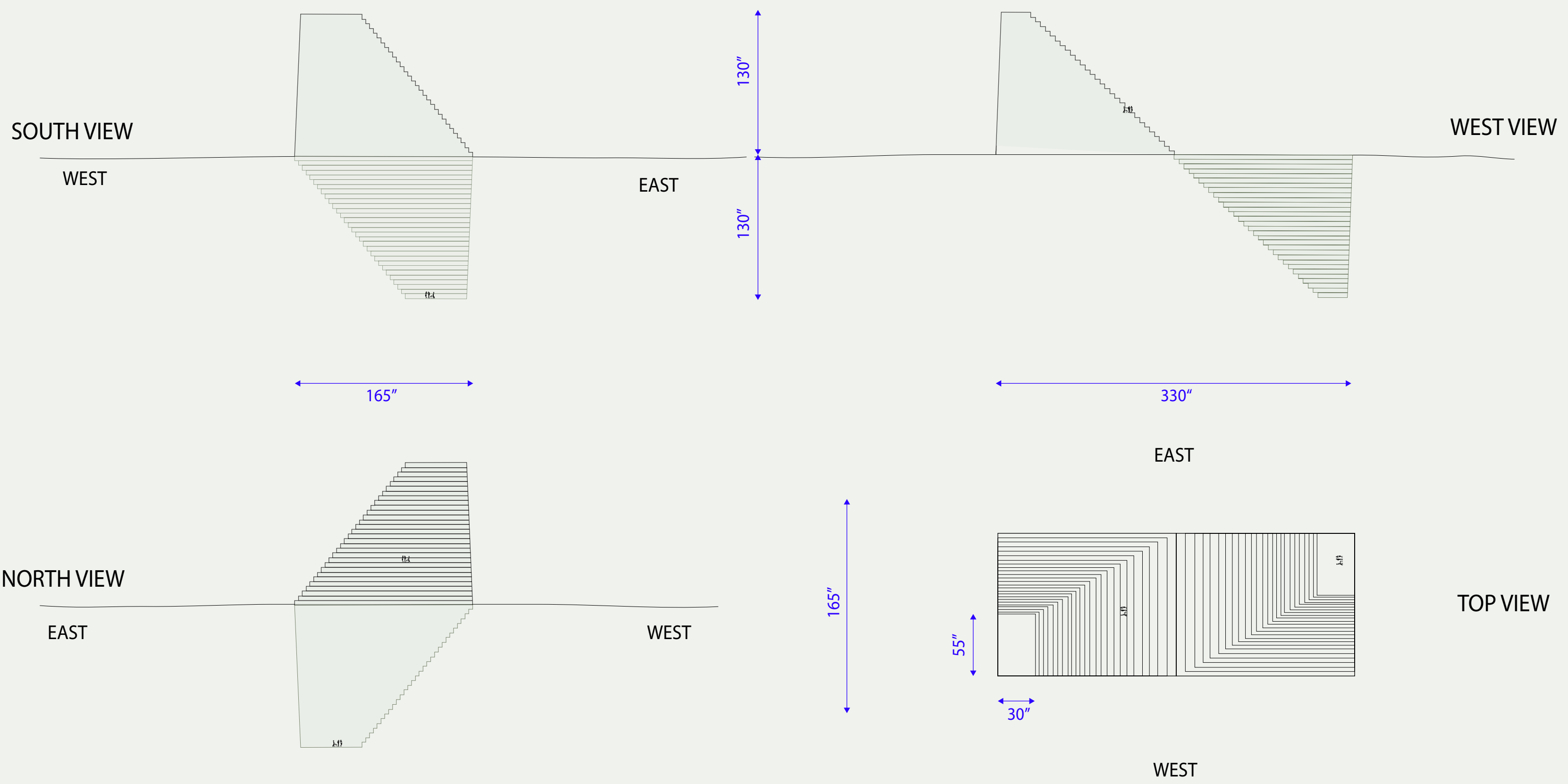


SILICON EARTH

The inward Journey



The materials used will be nothing but the earth of Silicon Valley and all the diverse layers of this fertile soil. Minimal energy required to illuminate the installation will be supplied using solar panels. **Image:** South view by night, showing layers of Silicon soil



Making the Earth layers visible brings about a deeper connection to our history and exposes the relationship between our wealth and the health of our planet.