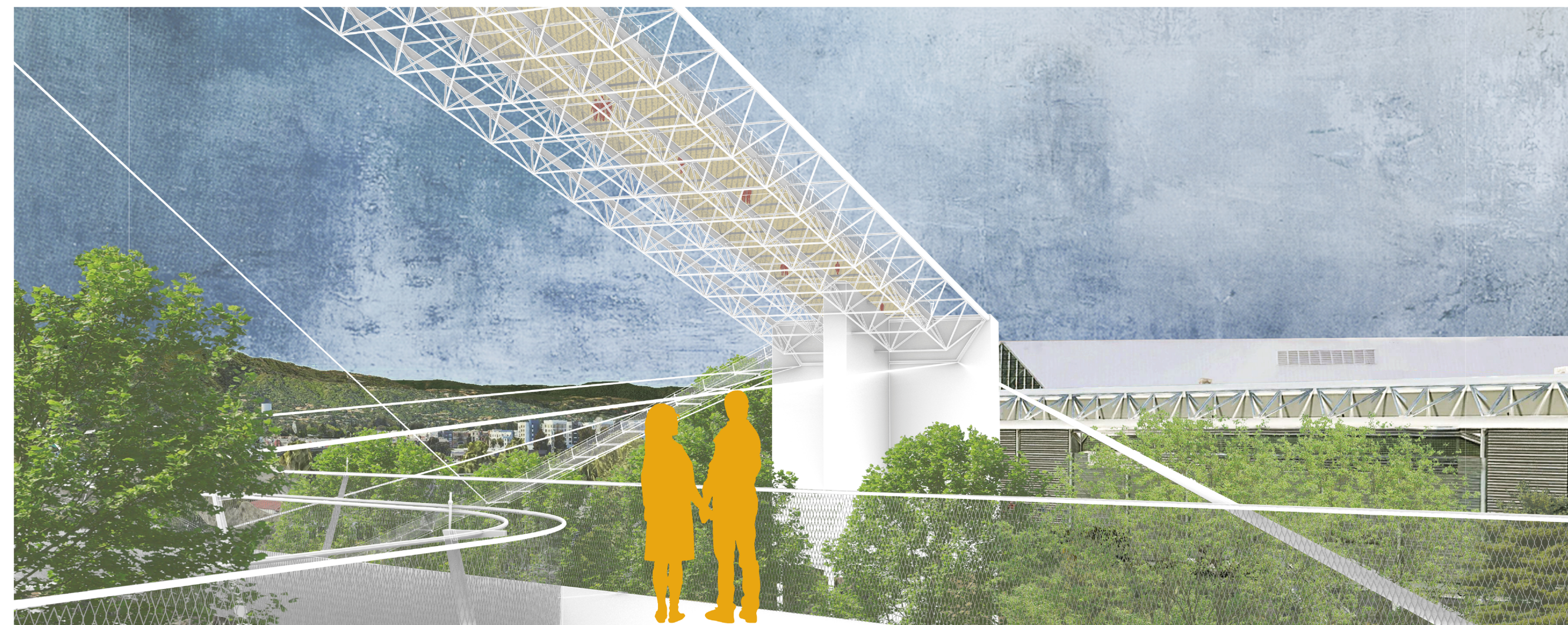




The two parts of the path, *The Walk upon the City* and *The Visit to the park*, dialogue to each other and to the garden, creating a strong visual presence that enriches the value of the park itself.



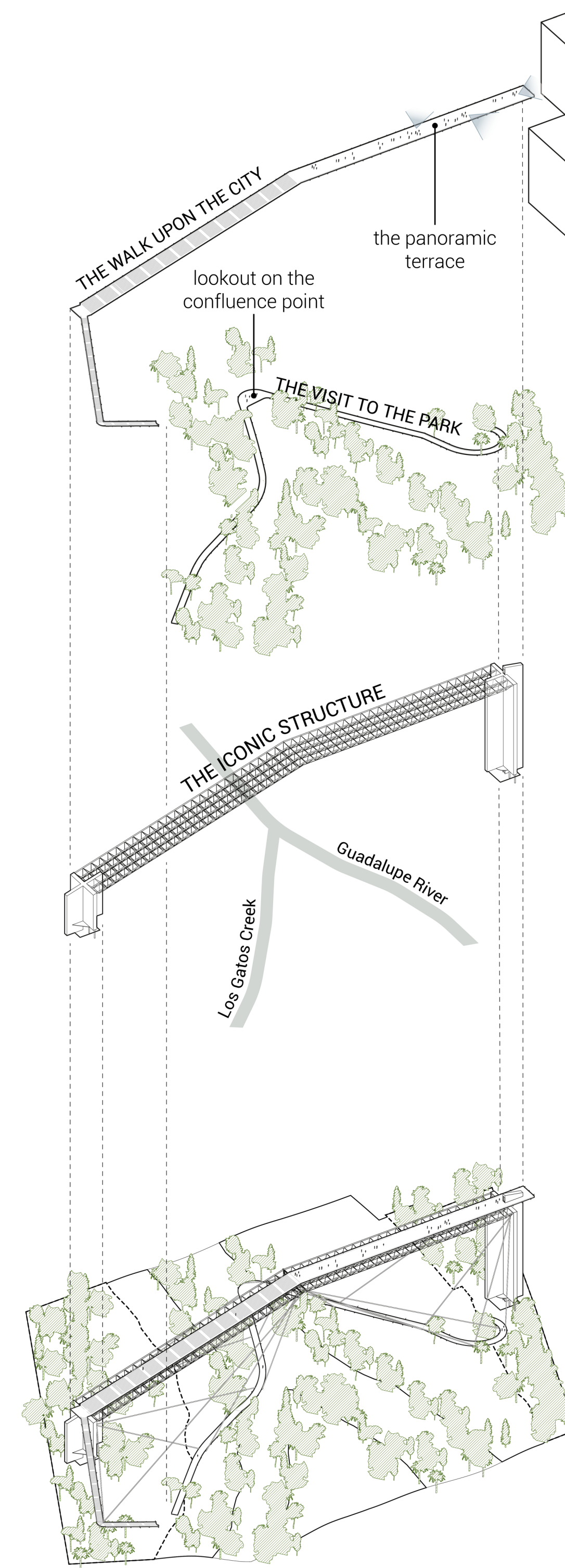
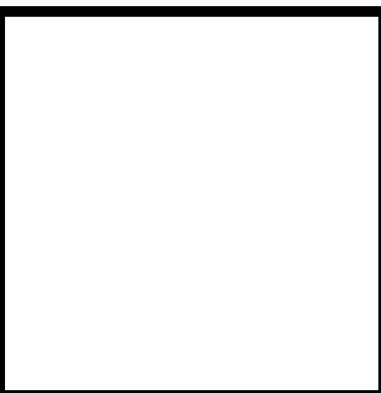
The Walk upon the city ends in a panoramic terrace from which the visitor can enjoy the view of the downtown and the surrounding area from the top. This longitudinal plaza seeks to become a must-see destination and a meeting point for the citizens of San José, being a walking panoramic stage on the city. In this way the Iconic structure takes reference to famous monuments proposing one main terrace, but it goes further not just proposing a static panoramic view but instead a walking view that allows seeing the city from different perspectives.



The visit to the park, winding through the treetops along the river and the garden, links the two sides of it. Providing the opportunity to fully immerse in nature, enables people to become aware of the rich green space of their city. This path won't touch the grounds thanks to metal cables that hung it on the Iconic Structure. Thanks to its flexibility, the path is in fact made of modular pieces and can be restructured for different trails, it will let people see the park from new perspectives, finding new relationships between the surrounding buildings, as the SAP, or the works of art, as the Five Skaters monument.

A WALK UPON THE CITY

What makes monuments important to their cities?



Great monuments succeed in becoming gathering places for their communities and attractors for visitors. What I feel it's more interesting it's not solely the vision of the monuments, but the view of the city you can have from those same monuments. Everybody knows the images of the Eiffel Tower or the Statue of Liberty or the Golden Gates, but when we are there we want to see the view we can enjoy on the top of them. On their terraces we can see the main places of the city, we can find the limits of it or we can play to find places we well know but we've never seen from the top, as our home or our place of work. Upon them we learn to know the city. That's why I think architectures as the Centre Pompidou in Paris or the Griffith Observatory in Los Angeles are so important for their communities. Showing the entirety of the city they build civic pride and become a central space for their community.



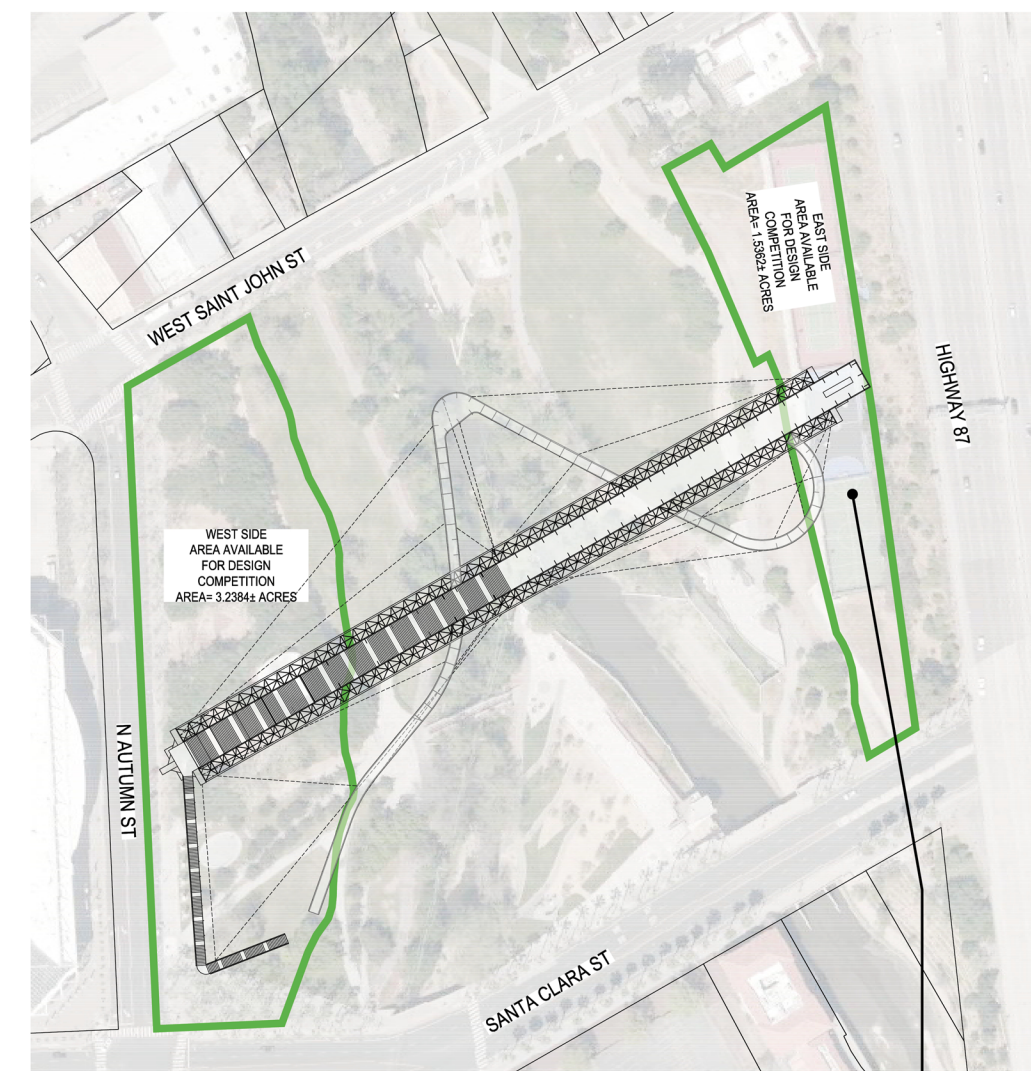
The proposal for the Urban Confluence foresees a great arch of 200' high that crowns the encounter between the two rivers and links the two sides of the park.

The Iconic Structure is composed of two massive pillars at the same distance from the confluence point, and joined by a big reticular structure.

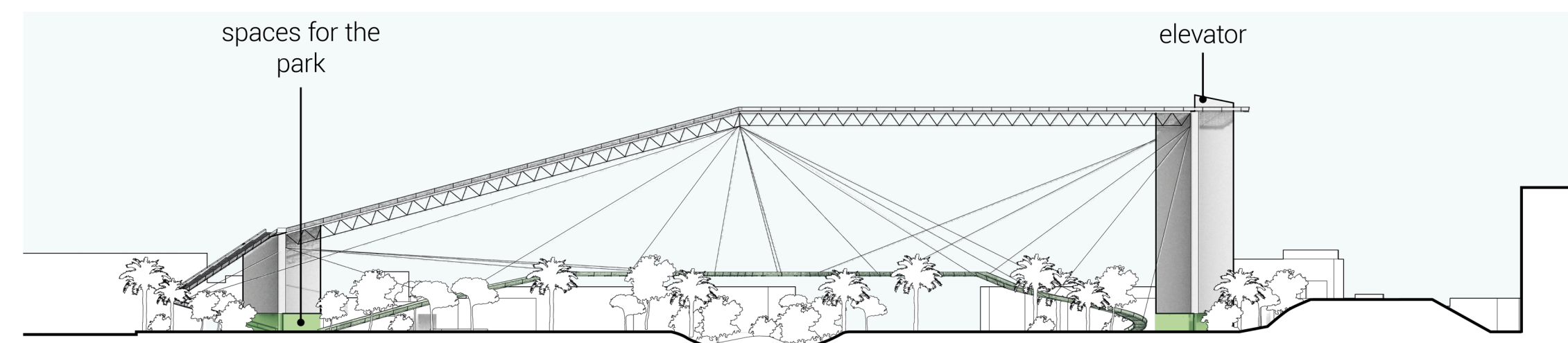
Above and upon it goes a system of paths that is the real focus of the proposal. The walkway is divided in two. The first one, at 50' high is **The visit to the park**, a trail that grazing the top of the trees show the park to the visitors and creates new spaces for the inhabitants.

The second one, which is the prosecution of the first one, rises above the Iconic structure till the 200' high.

This is **The Walk Upon the City**.

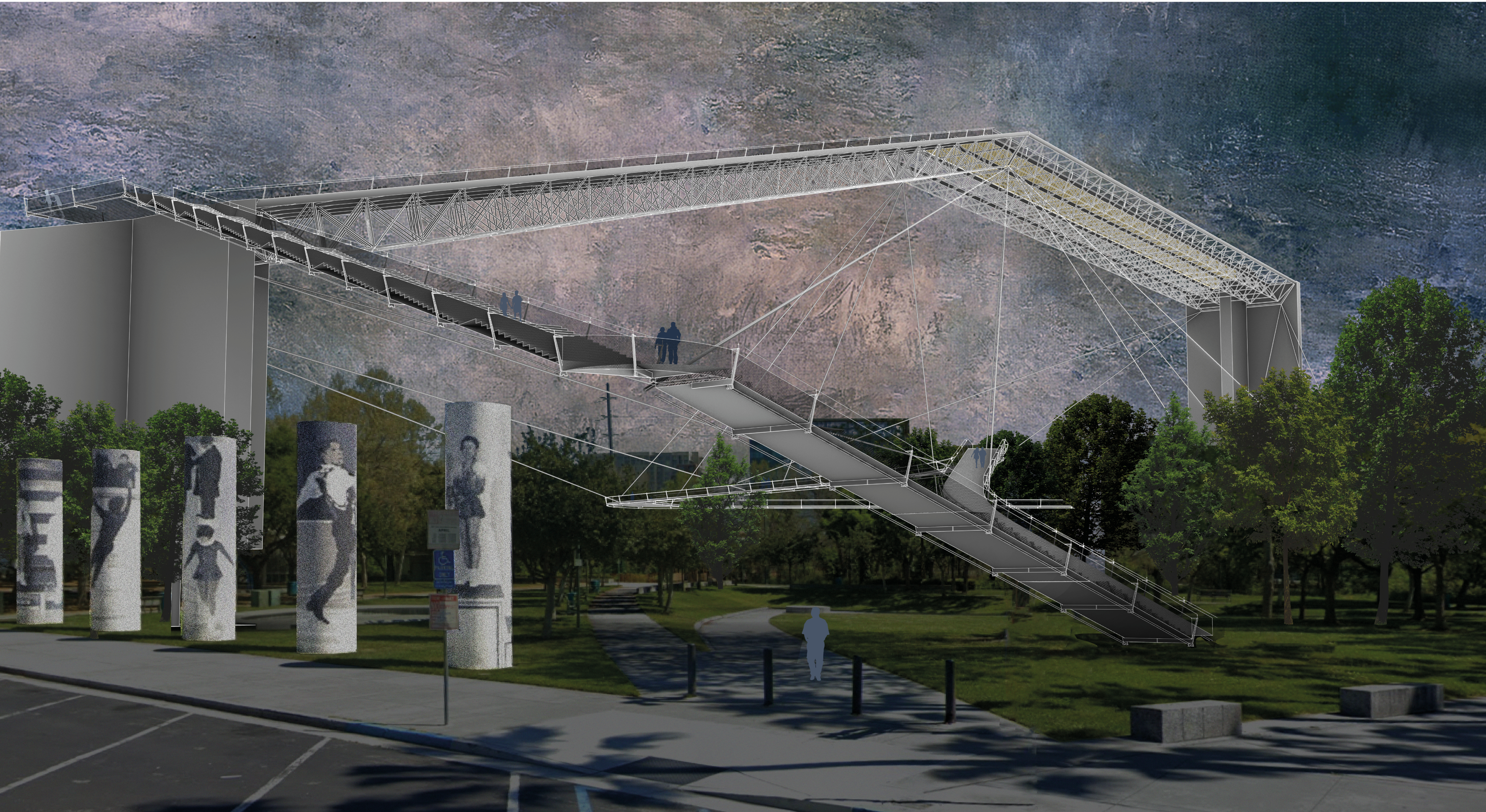
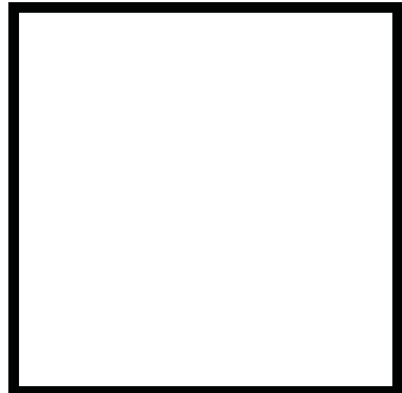


The tennis fields will be replaced outside of the perimeter and to their places the ground will be filled with trees.



At the bases of the pillars there are spaces for the introduction at the Guadalupe River Park that, with *The Visit to the Park*, will promote the knowledge about this important green space. An elevator inside the second pillar will allow to go directly to the terrace at the end of *The Walk upon the city*.

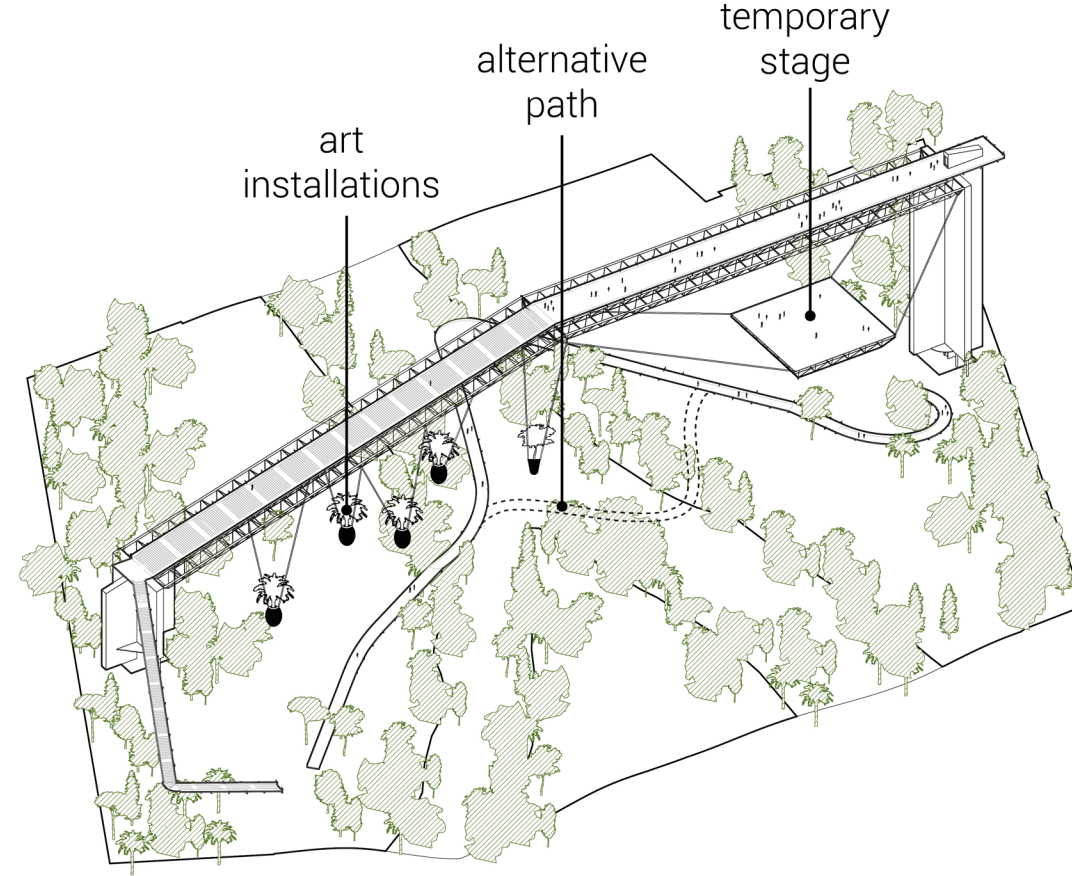
How can a new iconic structure develop and respect a place?



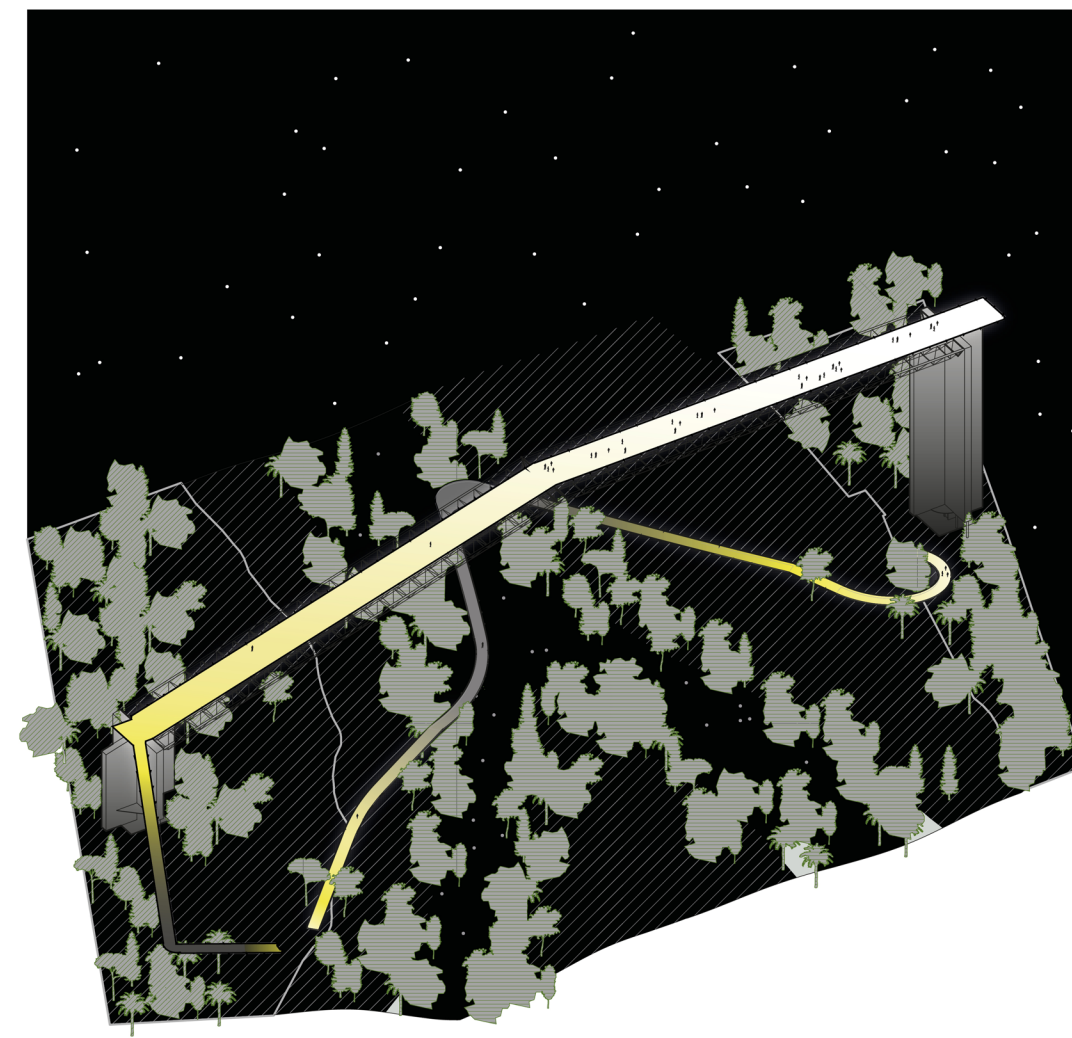
When the sun sets, a unique lighting system will turn on allowing not just to make the structure visible from distance during the night, but letting visitors to enjoy the park during the late hours too. With the dark in fact the trails will light up appearing as suspended stripes.

The lighting will be possible thanks to glowing fiber installed in the railing of the paths. This low-power LED technology it's smart and will allow a different colours and a pulsating lighting. The intensity of the pulsations will depend on the number of the people walking on the visit to the park path. The light system is in fact powered by the smart

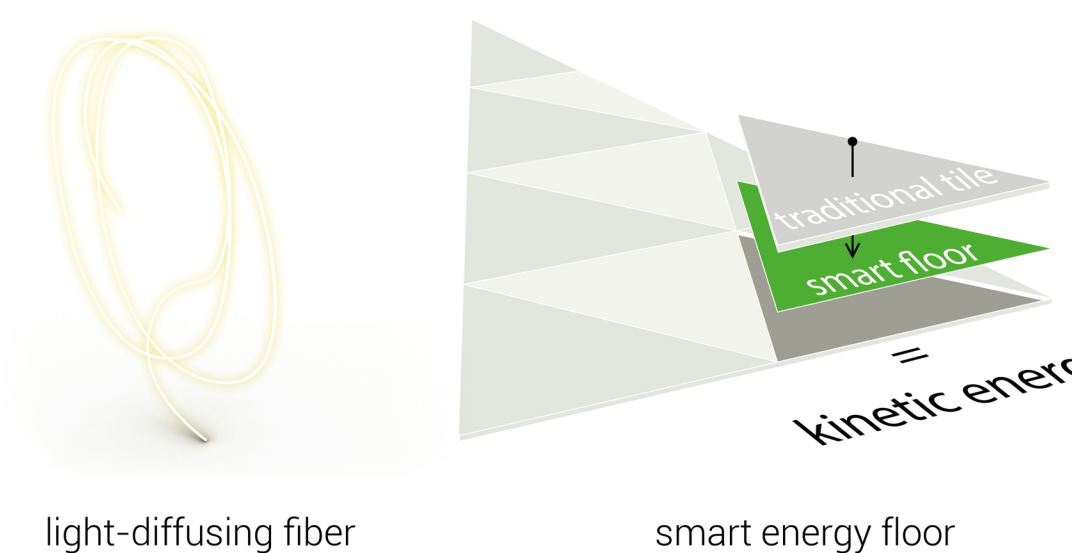
walking floor of the trail that will convert each step of the promenade into clean energy for the illumination system. So more people will walk at a certain point more light there will be. In this way walking at night around the Iconic Structure will be a new, interesting and sustainable experience.



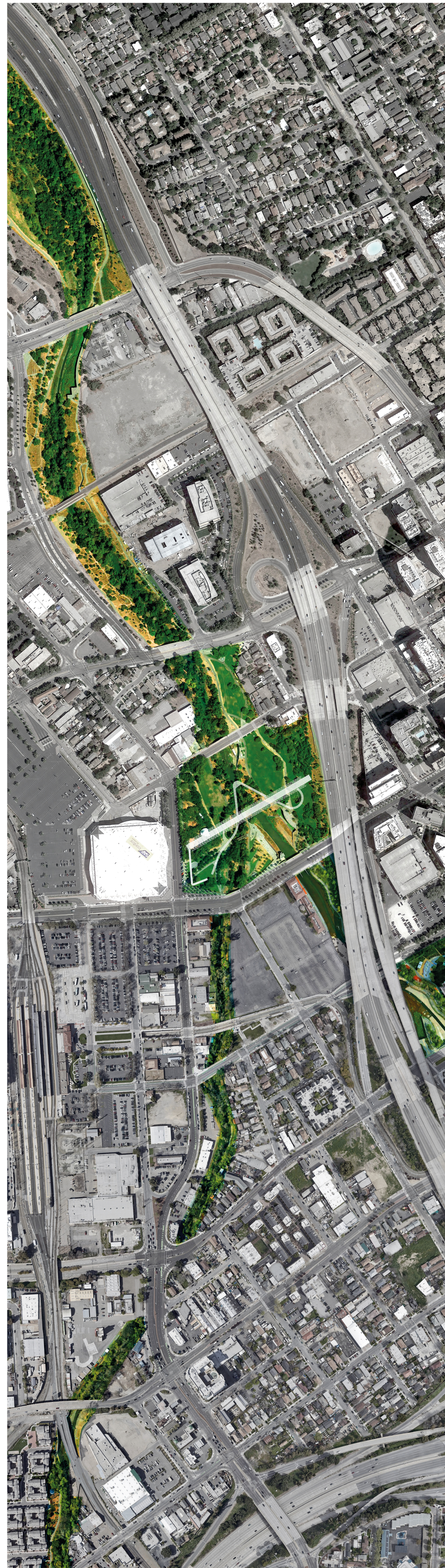
Looking at the culture of innovation of the Region, the unique but simple structure will be able to create diverse and always new situations. The versatility of the reticular system in fact makes it easy to install a stage for shows and musical events or art installations. Even the paths, thanks to their modular structure, can change shape creating always new trails through the park.



This kind of illumination will respect the environment having an intensity which goes from a maximum on the top of the structure till a completely shut down in the areas where the fauna could be damaged. Even being in the top of the structure, the lighting system will be directed to not disturb the airplanes flight.



Following the net-zero principles the only energy used by the structure are the light-diffusing fibers, whose consumption is very low, and the elevator. They will be both powered by the smart energy floor of the Visit to the park path that will convert, by piezoelectric effect, the kinetic energy of the steps into green and clean energy, making the walk upon the city a green and sustainable walk too.



The Iconic Structure crowns the encounter between the two rivers in order to monumentalize this peculiar geographic point but at the same time to link the two sides of the park and allow a complete use of the linear park of the Guadalupe River. The Iconic structure assumes a strong urbanistic value for the availability of the park.

