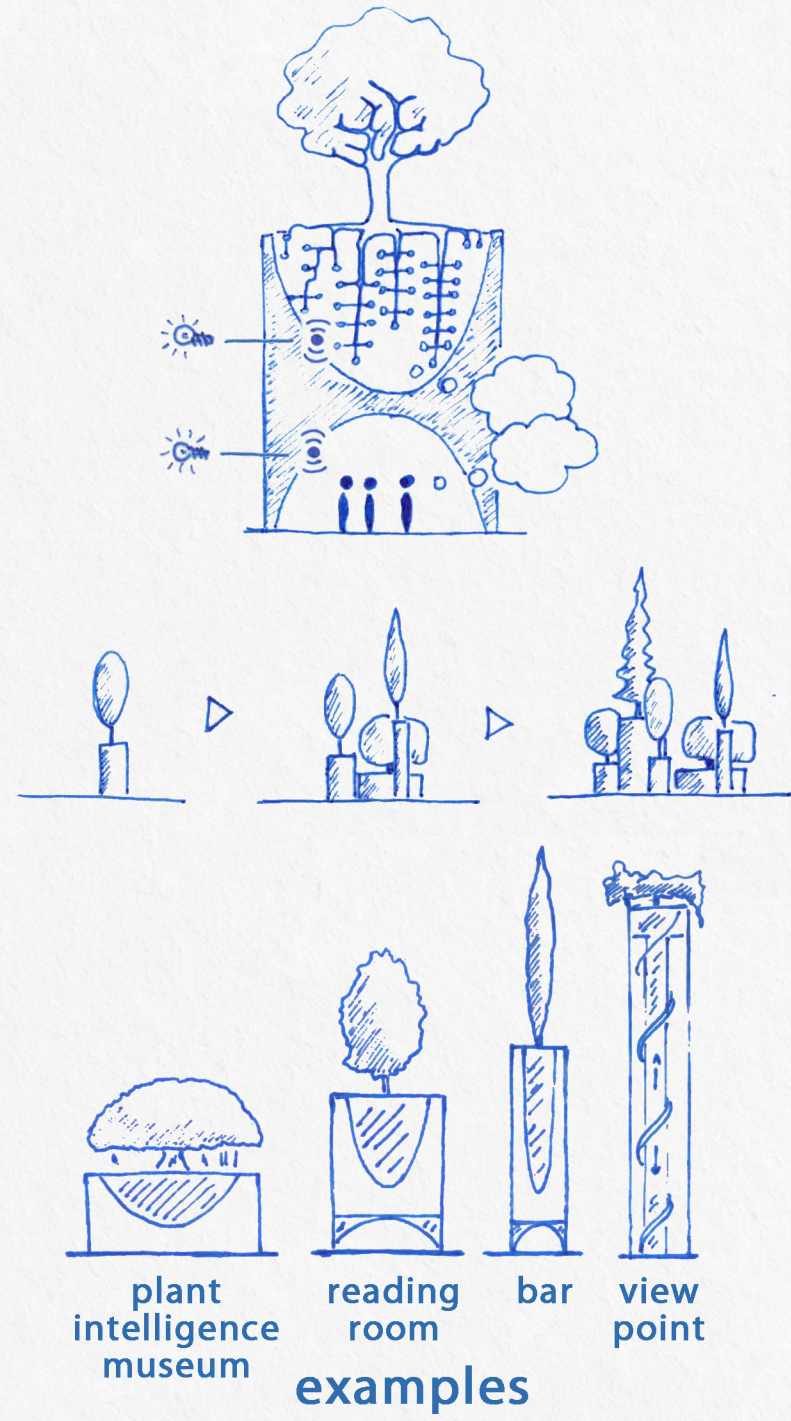


## Function

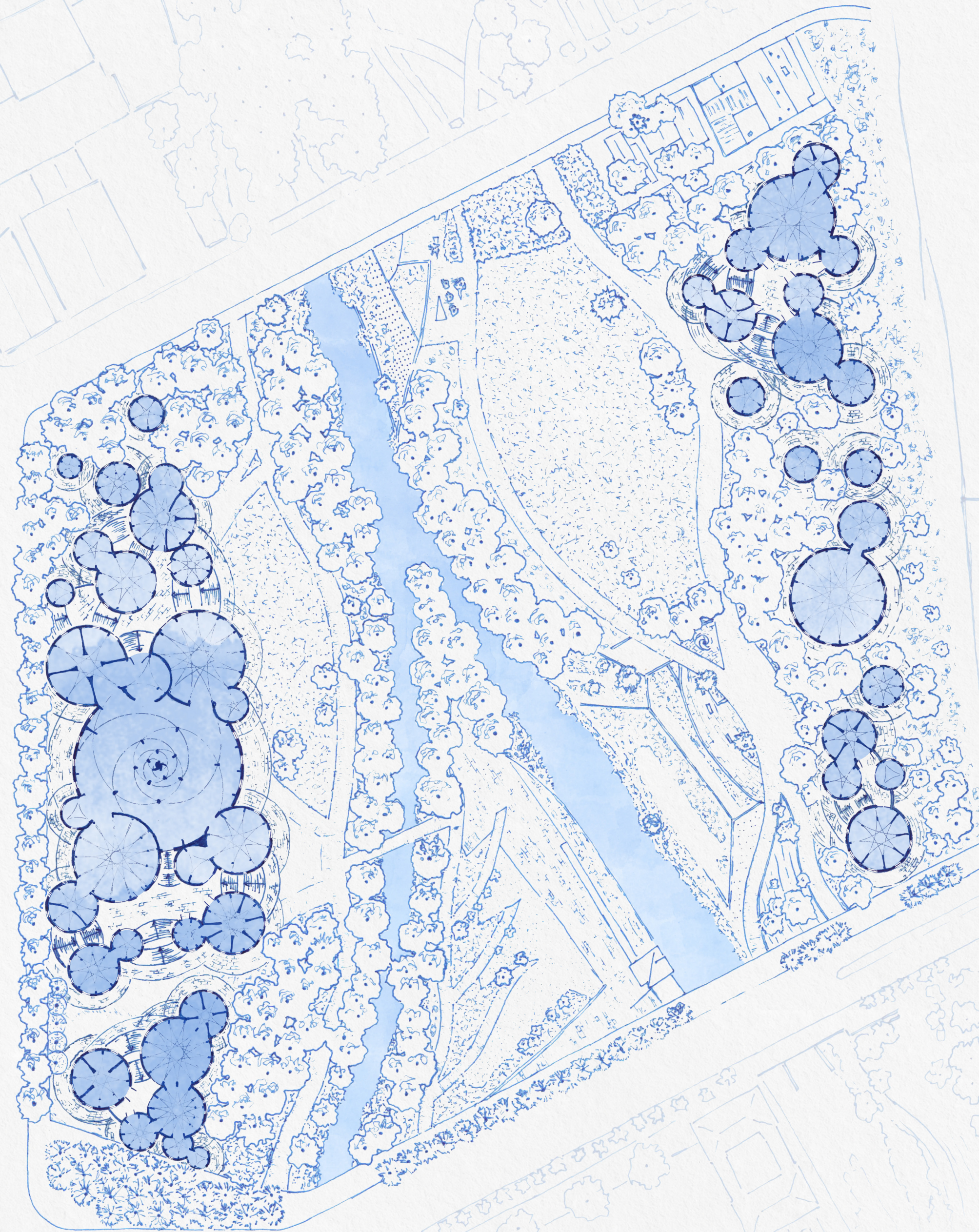
**Networking:** the project involves a multiplicity of communities of users each one related with a specific place and a specific tree which became their guardian in a metaphorical symbiosis. The encounter of social and vegetal intelligence is perceived by sensors and translated in light representation.

**Incremental growth:** step by step the community evolves its relations with the environment guiding the fractal growth of new monumental elements. The dynamic evolution generates a network system of ways, functions, open and in-door spaces adapted through time-long responsive processes.

**Framework adaptability:** the relational model sets a pattern of structural proportions that can be adjusted to a great variety of functions. Spaces can change according to the needs' development encouraging a rich mixité of uses that improve potential interaction over a night and day continuity of activities.



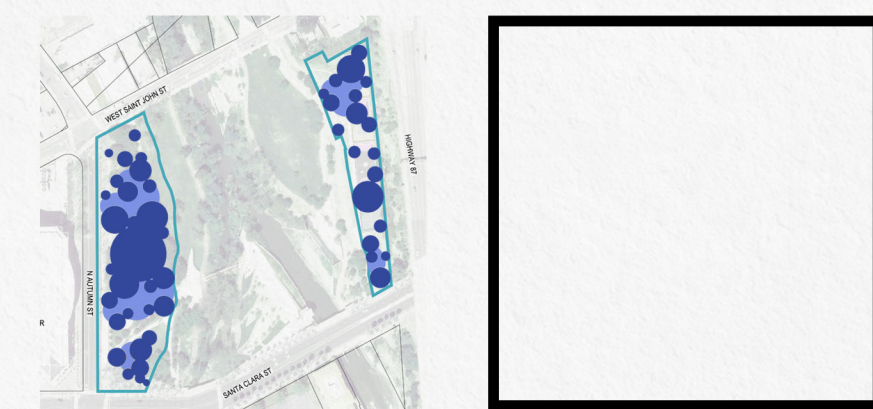
# ROOTS INTELLIGENCE



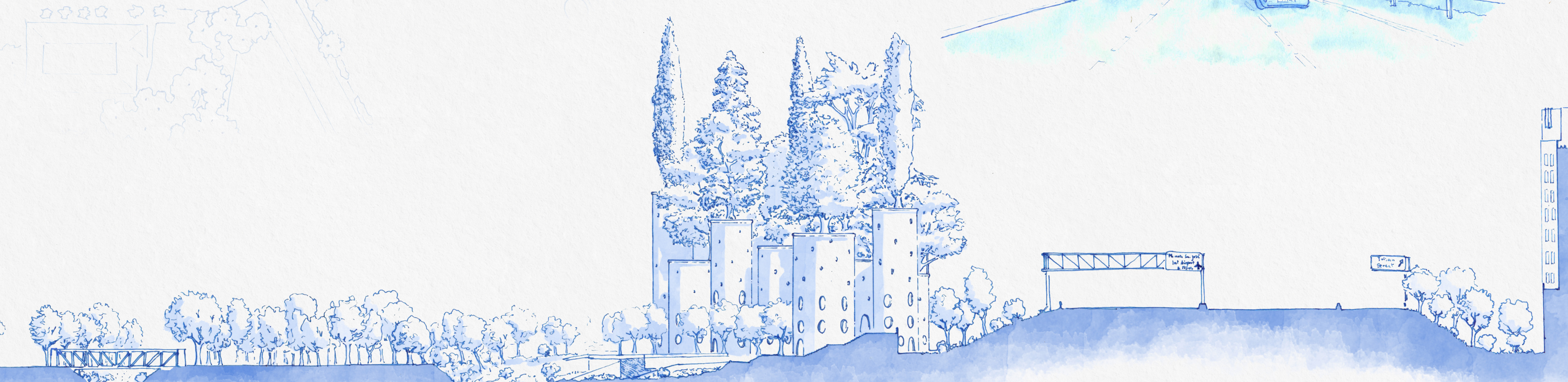
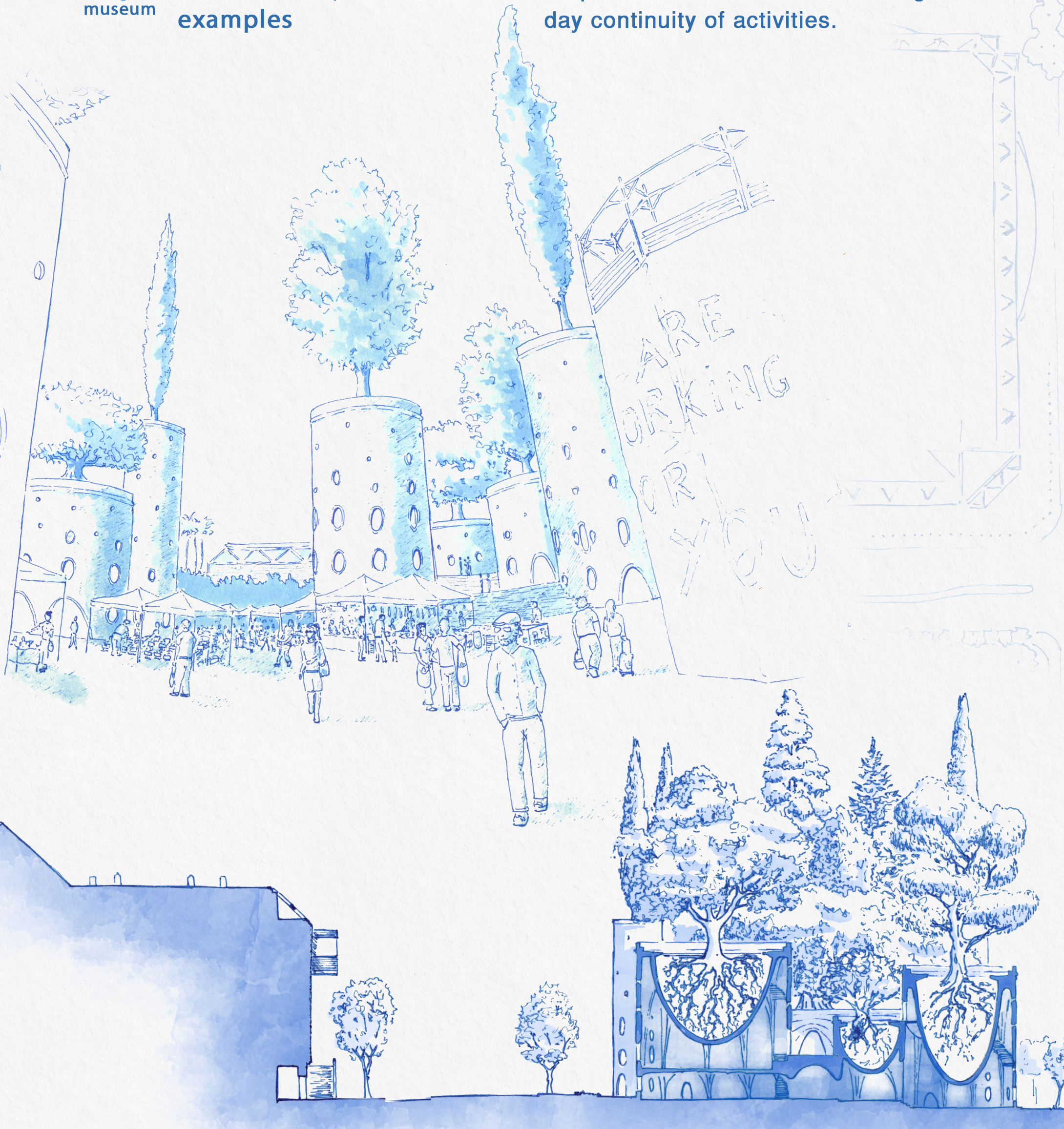
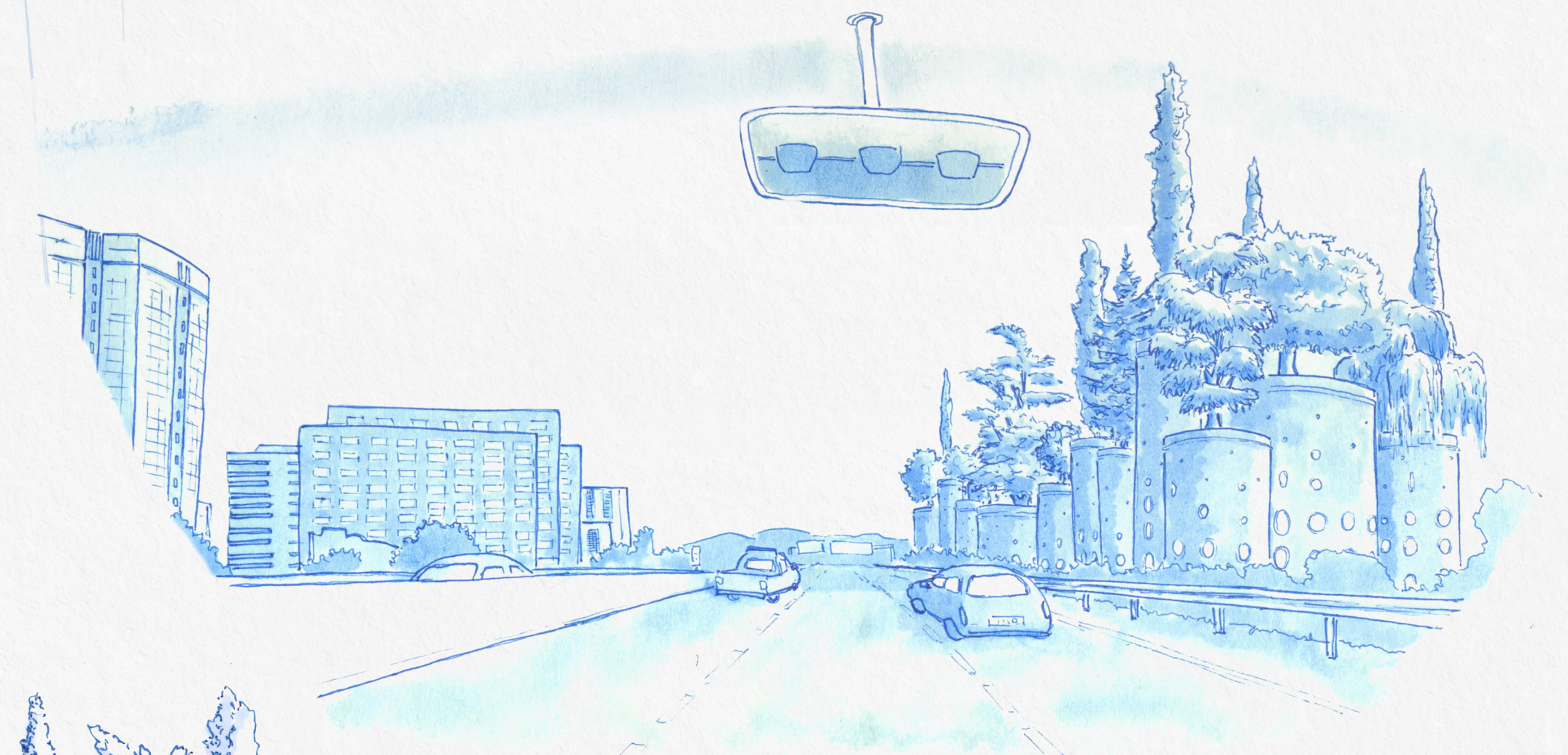
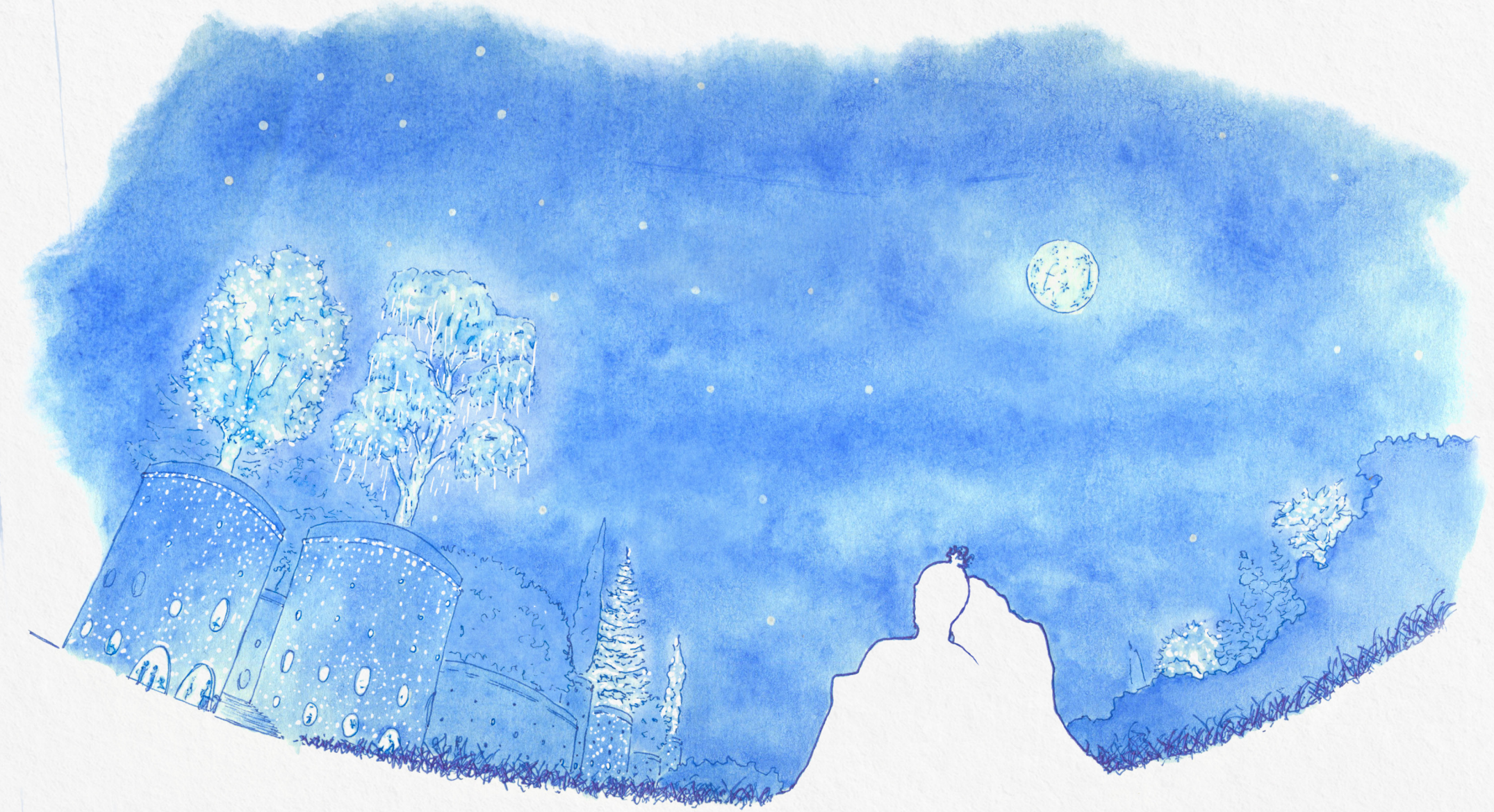
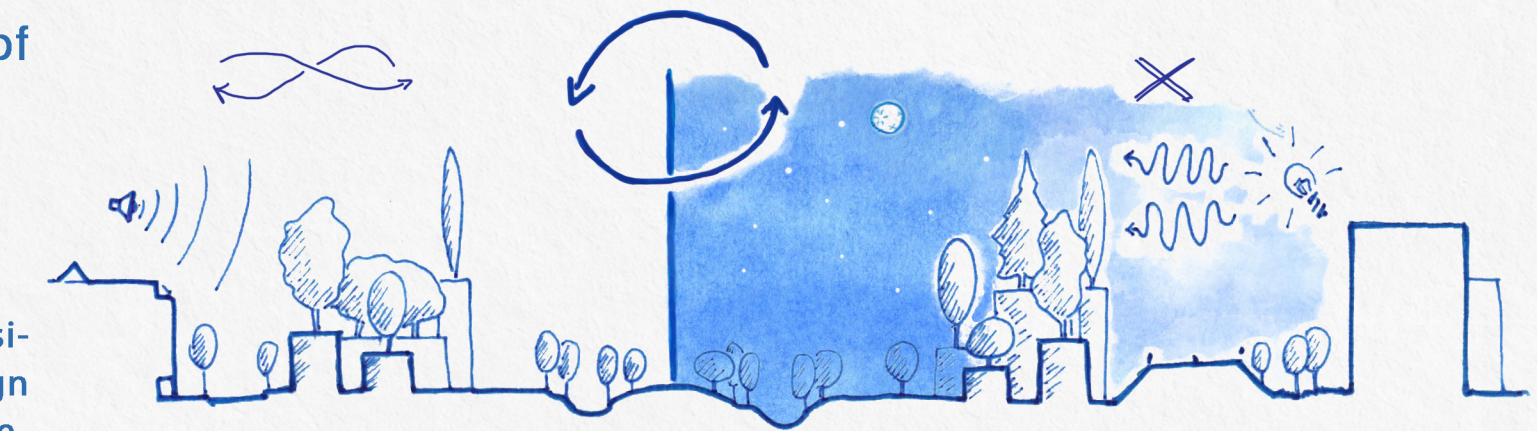
## Environment

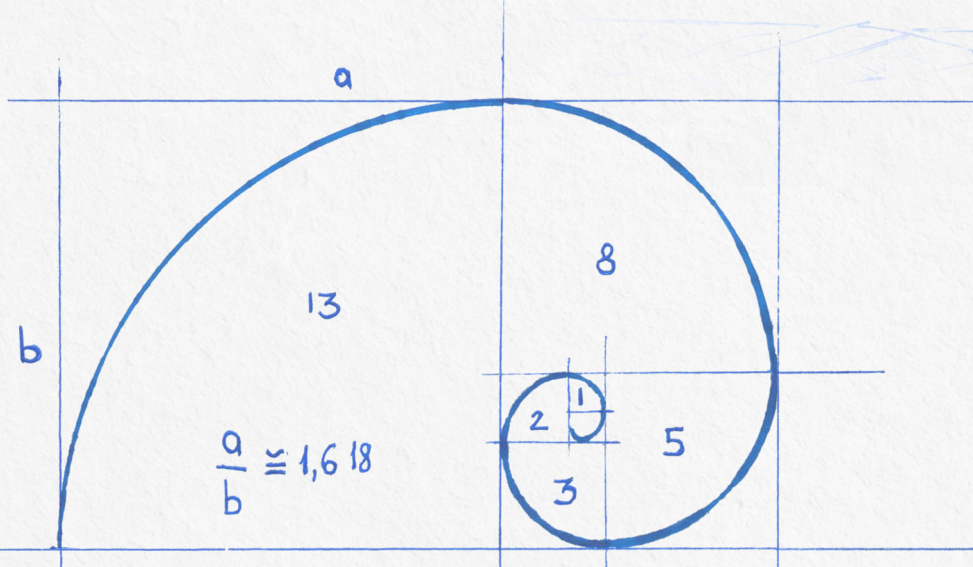
The monument employs the environmental value of the park to enhance it and create a biological and social lympho-nodes, which can capture at the most the diversity of present species and cultures.

**Please note that:**  
Plan and section, are just one of many possible variants of development. The design quota is not constant so as to make it as representative as possible of the idea.



## Ecosystem



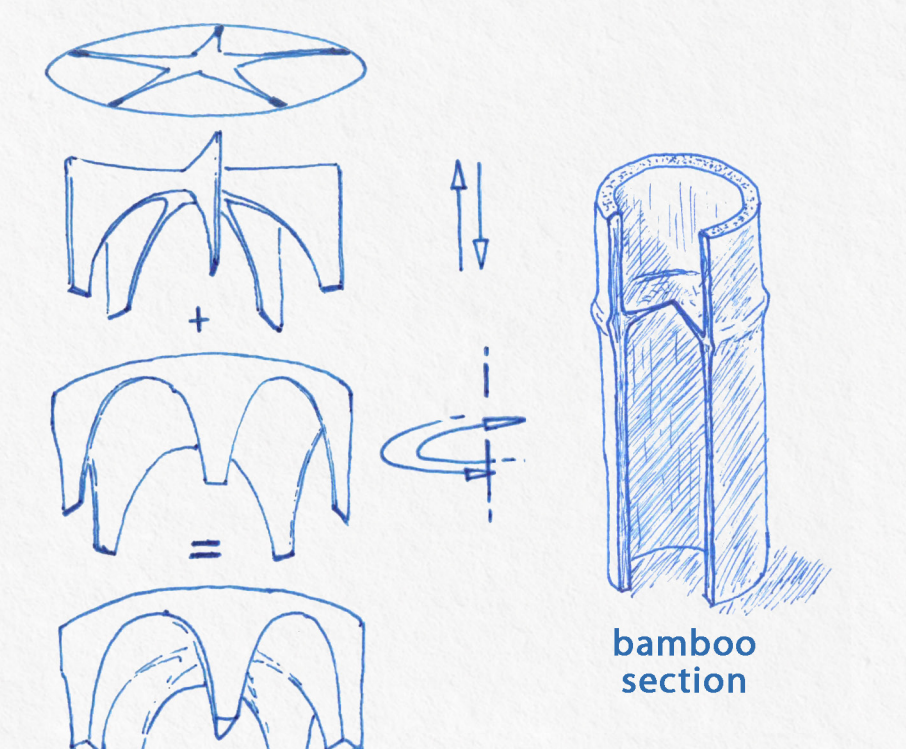
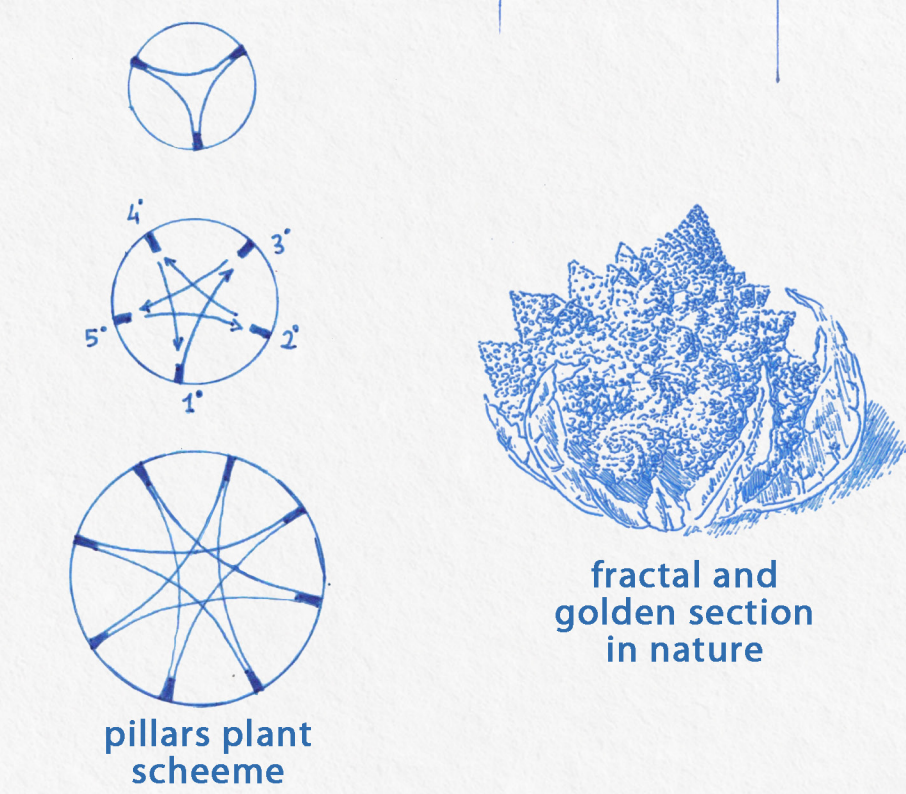


### Form

The form of the design keeps an external simplicity that emphasizes the monumentality of the trees: the iconic power of the single element turns into landscape.

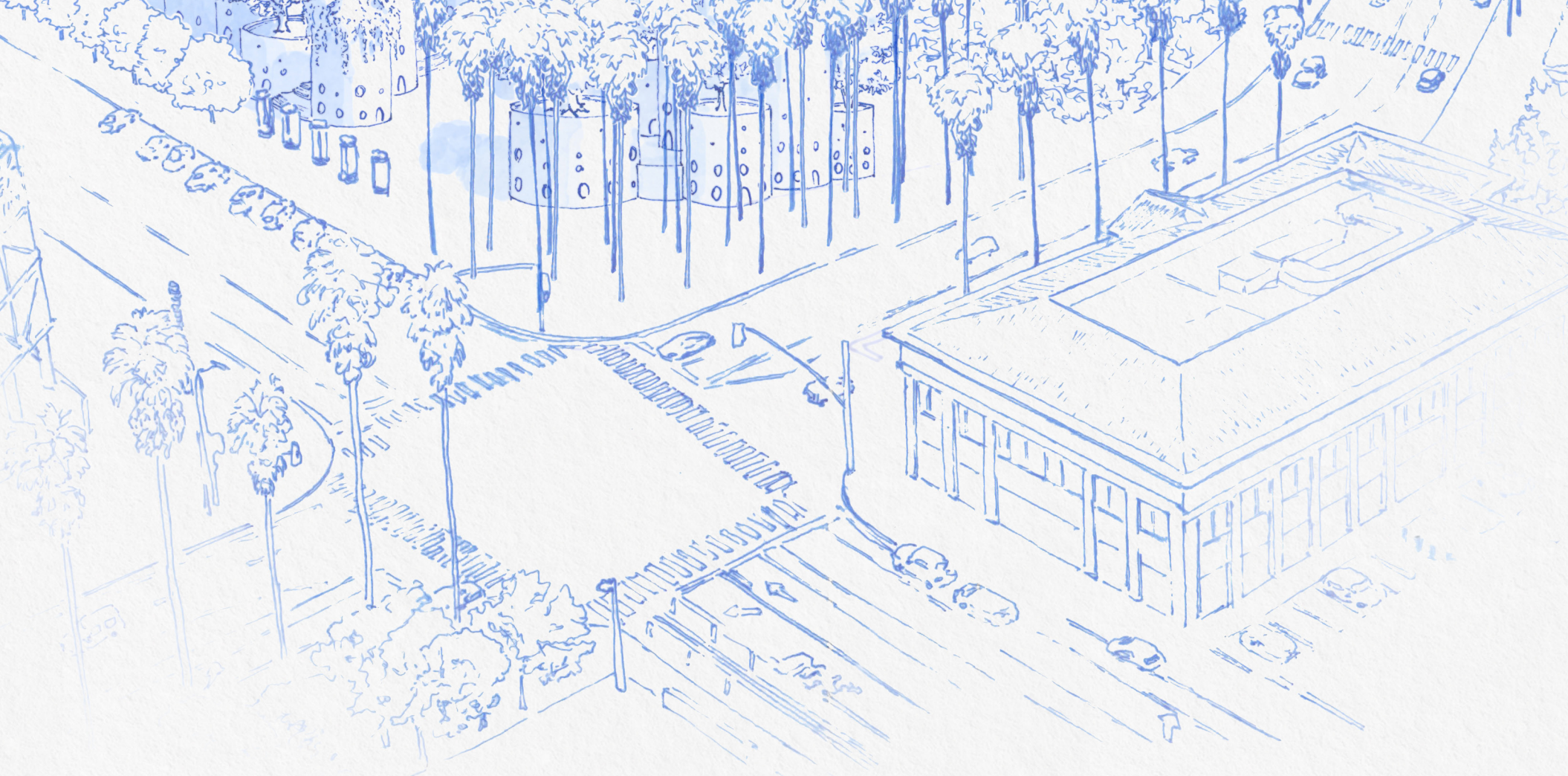
Form follows function: the relationships that grow step by step take a shape that crystalize in space relationships.

The design evolves together with the life that wraps it. Every time that a tree is added, the proportions of the new architecture come to a relationship with the existent one, sharing pillars, interfloors, lights. The progressive growth is therefore very similar to the development process of rhizomes and fractals that characterize many living beings.



The ribs of the parabolic vaults discharge on alternating pillars following the series by Fibonacci (e.g. 2+3=5 --> I°pil./III°pil./V°pil...). In the same way the paraboles themselves follow the golden series defined by the series itself (AA'+BB'=CC' o BB'/AA'=CC'/BB'=1,618...).

The structural functioning takes inspiration from the bamboo: the vertical fibres resist pressure and flecion whereas the cylindric shape resists torsion. The circular base and the following of curve shapes doesn't allow the rise of a straight line with a direction and central point of view, also the vaults, like the golden series, never touch the centre: the only answer is dynamism, the only possible centre is the tree.



### Lighting

A rich network of lights fluorescent materials and optical fibres activated by sensors gives evidence to human and vegetable activities; their flux produces a continuous change that creates a diffused lighting and magical atmosphere inside the park.

On the outside the intensity grows up: the great quantity of luminous points forms the effect of a living and pulsating cloud.

