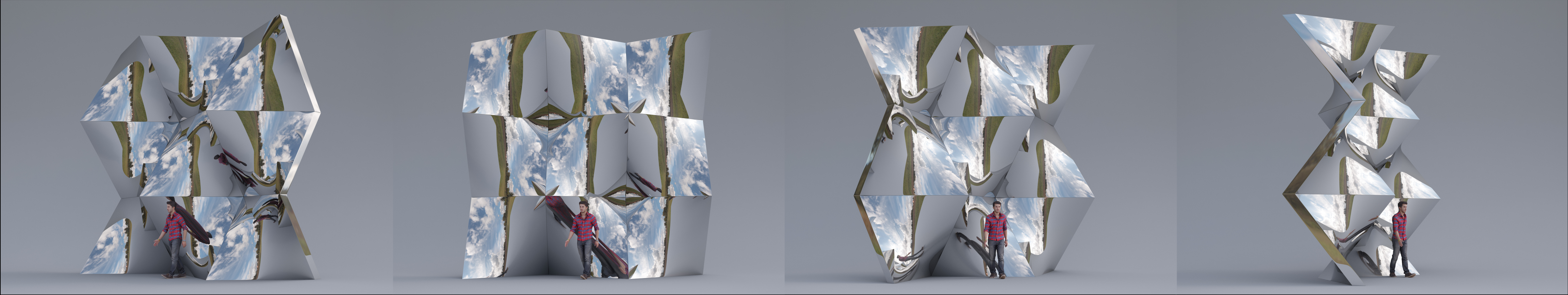
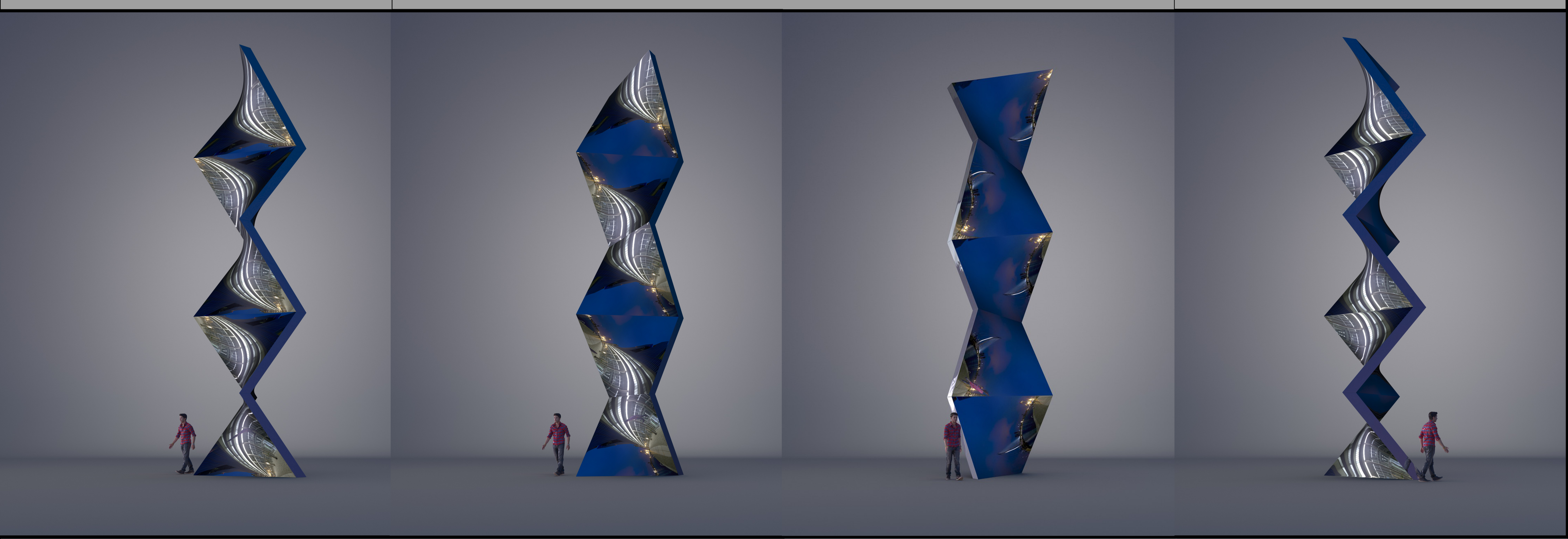
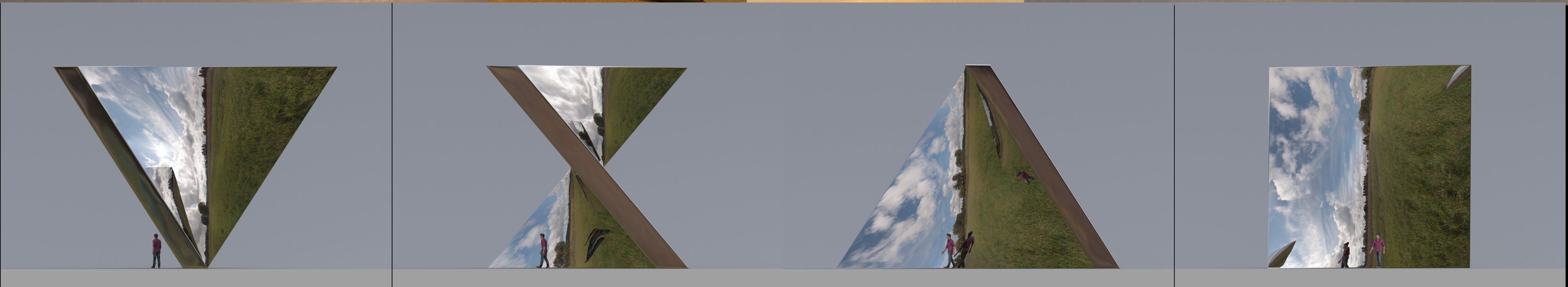
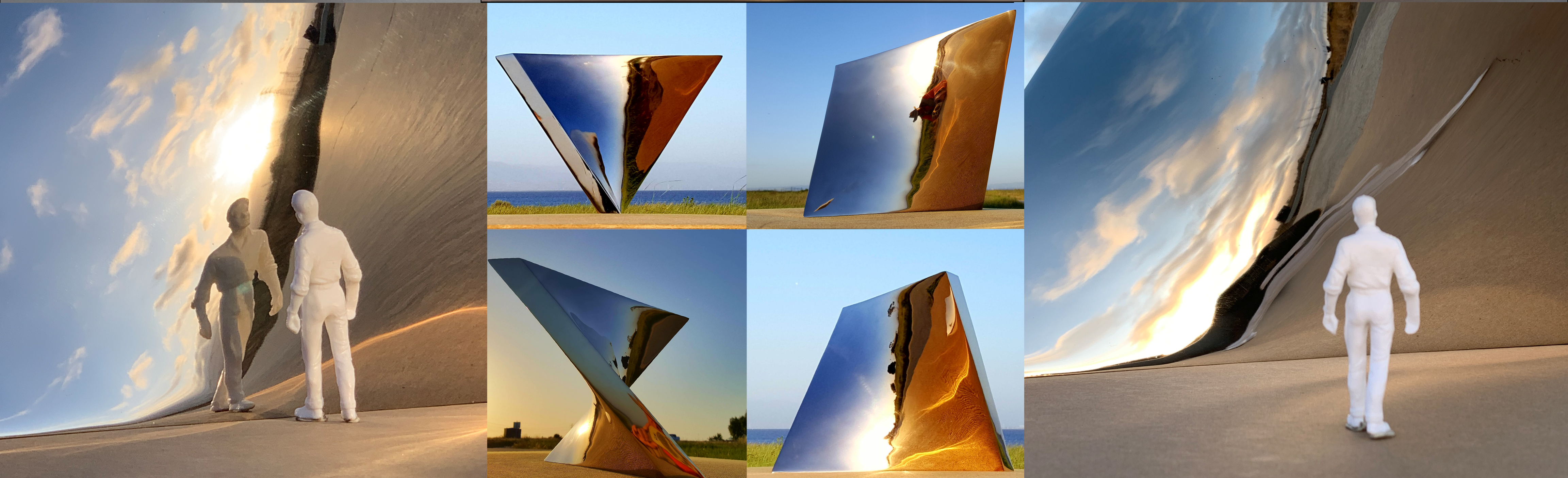
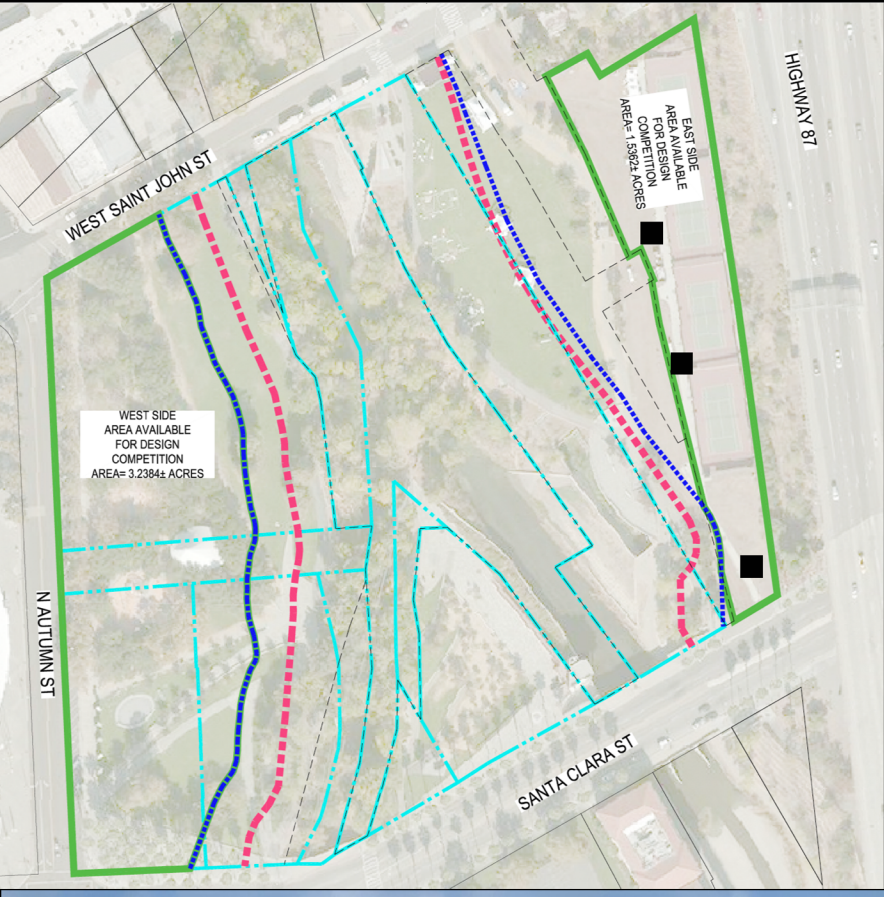
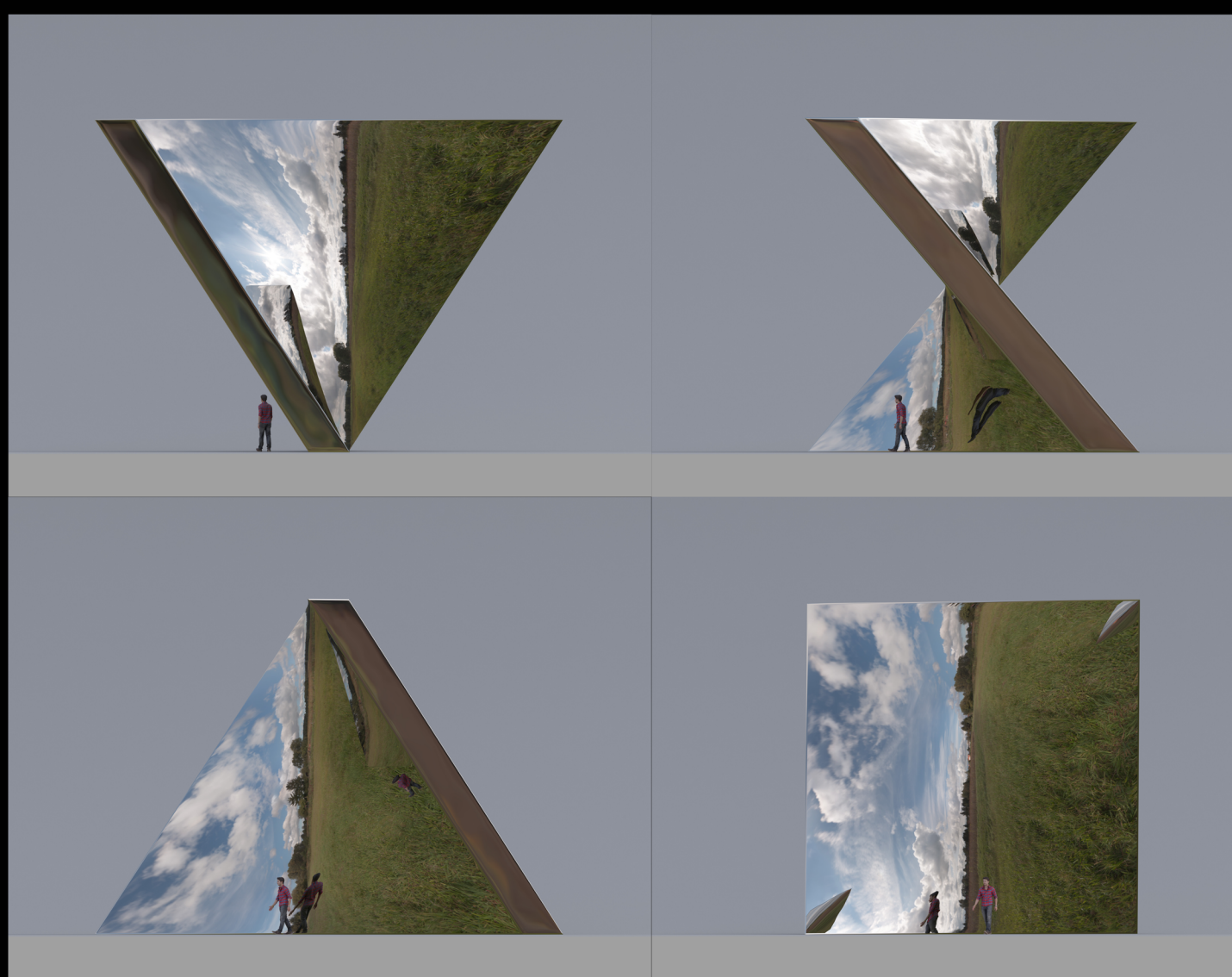


# SHIFTING REALITIES SCULPTURE PARK

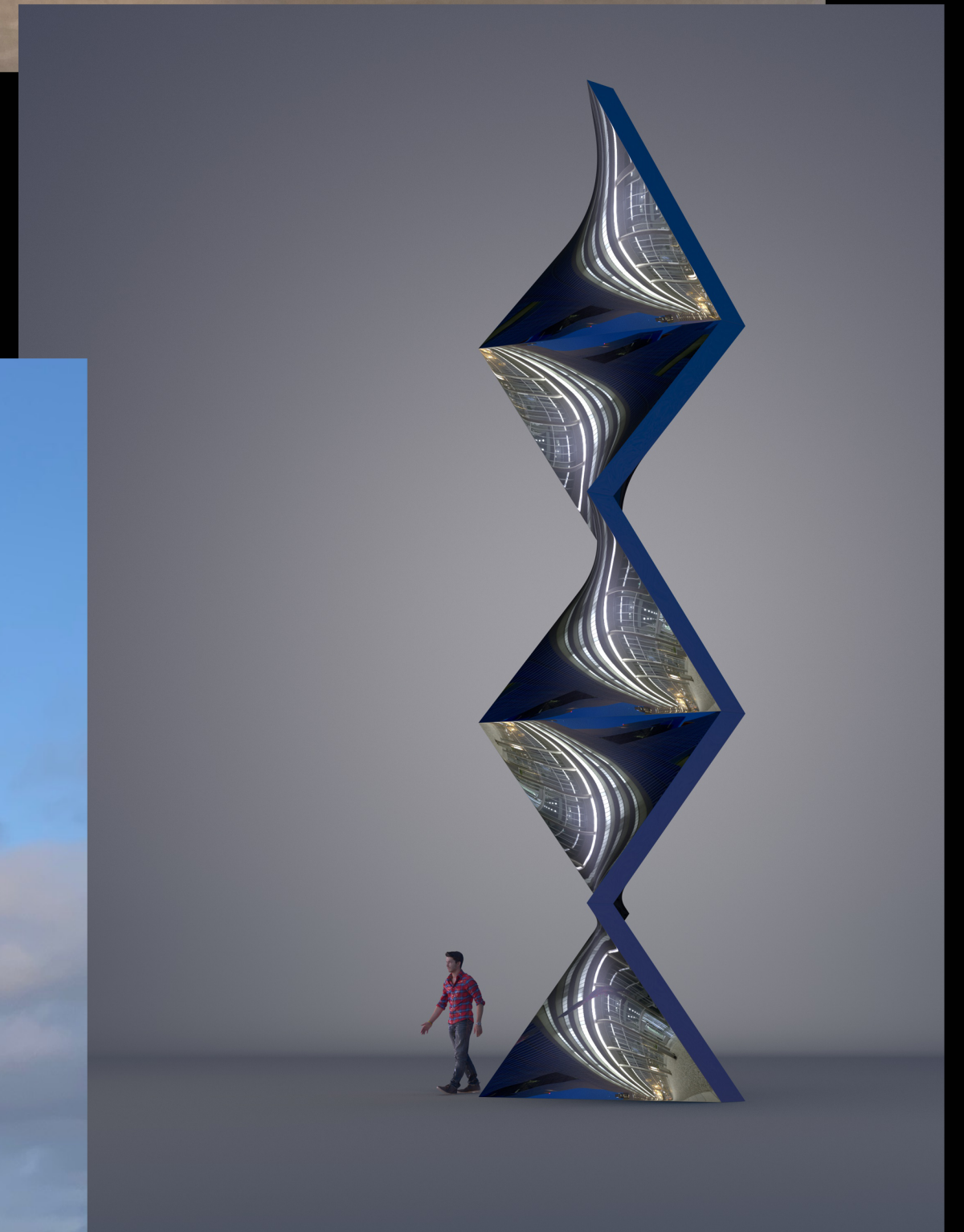
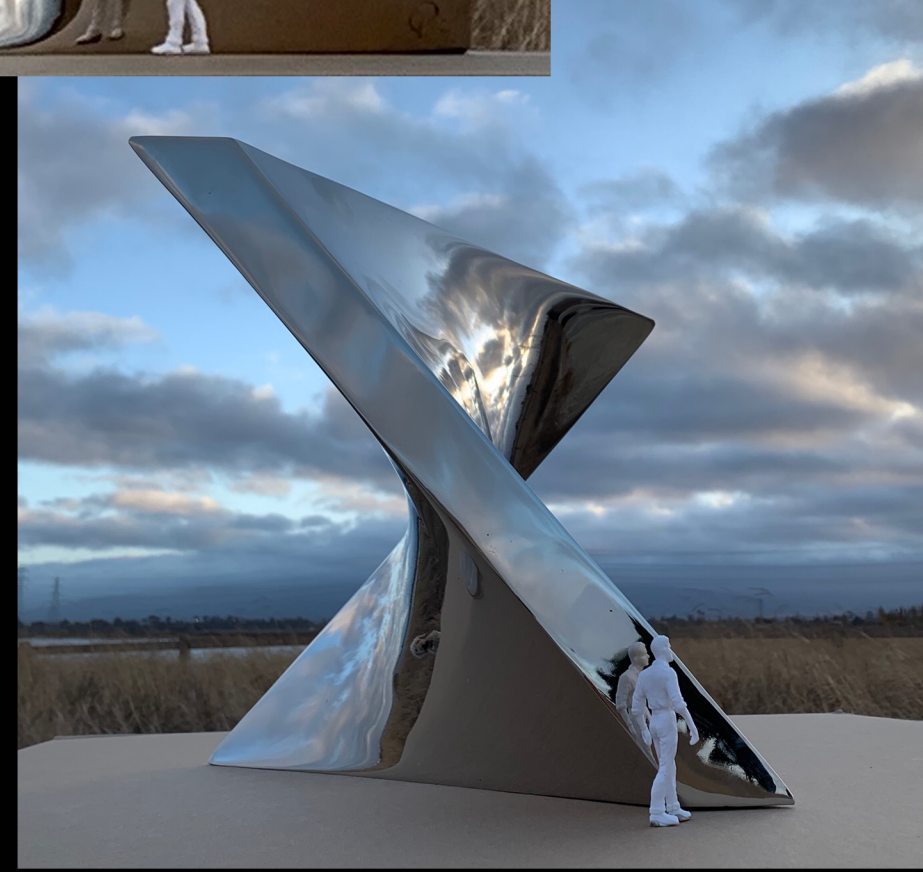
IN THE CENTER OF SILICON VALLEY, SHIFTING REALITIES SCULPTURE PARK CELEBRATES THE HUMBLE PIXEL THAT TRANSFORMS DATA AND INFORMATION INTO IMAGES. A VISUAL SYMBOL OF THE DIGITAL ERA, PIXEL IS ONE OF THREE SCULPTURES THAT EXPRESS THE CONNECTION BETWEEN THE DIGITAL WORLD AND OUR PHYSICAL REALITY.

IN POLISHED STAINLESS STEEL, JUST LIKE A MIRROR, IT REFLECTS REALITY... SHIFTING IT 90 DEGREES. VIEWERS WILL NOTICE THEIR OWN REFLECTION TRANSFORMS FROM THE 90-DEGREE INVERSION BACK TO NORMAL IN JUST A FEW STEPS RIGHT IN FRONT OF THE OBJECT. OBSERVING SHIFTING REALITIES, THE EXPERIENCE OF INTERACTING WITH PIXEL WOULD BE SURREAL.

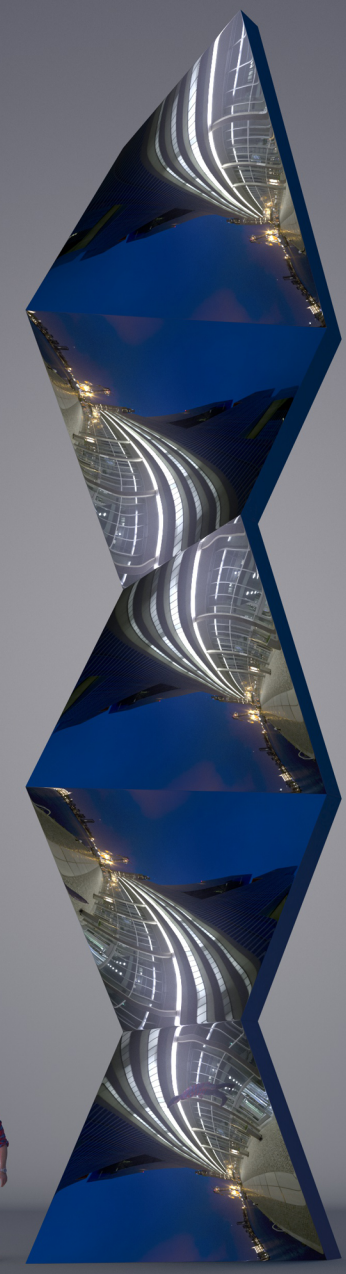
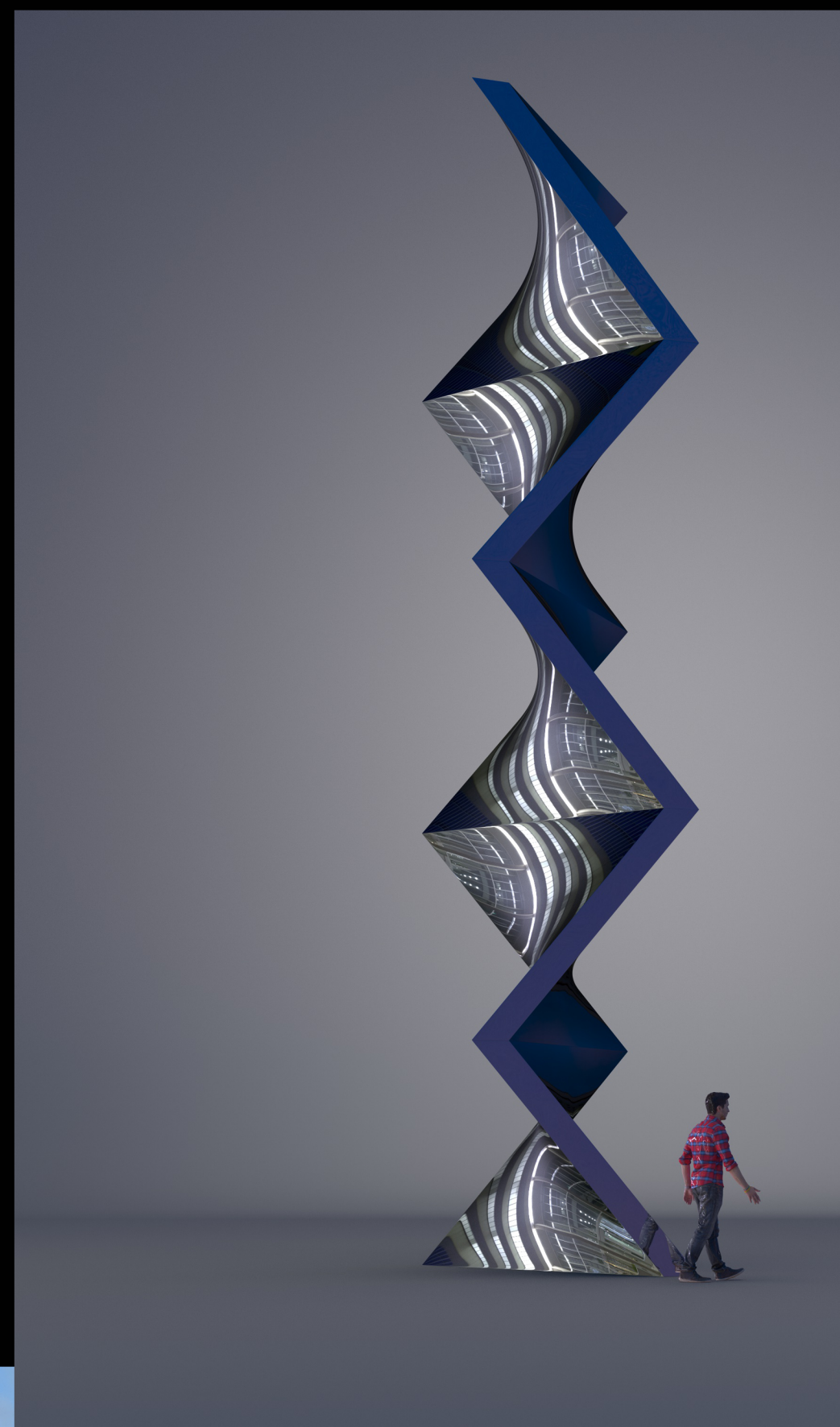




PIXEL



PIXEL COLUMN



PIXEL 3 X 3



SHIFTING REALITIES SCULPTURE PARK

IN THE CENTER OF SILICON VALLEY, SHIFTING REALITIES SCULPTURE PARK CELEBRATES THE HUMBLE PIXEL THAT TRANSFORMS DATA AND INFORMATION INTO IMAGES. A VISUAL SYMBOL OF THE DIGITAL ERA, PIXEL IS ONE OF THREE SCULPTURES THAT EXPRESS THE CONNECTION BETWEEN THE DIGITAL WORLD AND OUR PHYSICAL REALITY.

IN POLISHED STAINLESS STEEL, JUST LIKE A MIRROR, IT REFLECTS REALITY... SHIFTING IT 90 DEGREES. VIEWERS WILL NOTICE THEIR OWN REFLECTION TRANSFORMS FROM THE 90-DEGREE INVERSION BACK TO NORMAL IN JUST A FEW STEPS RIGHT IN FRONT OF THE OBJECT. OBSERVING SHIFTING REALITIES, THE EXPERIENCE OF INTERACTING WITH PIXEL WOULD BE SURREAL.

