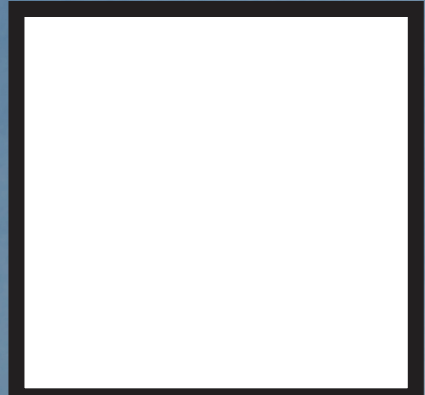


OASIS

A SUSTAINABLE GARDEN.



We replant native California trees, shrubs and flowers over the entire site, still highlighting existing artwork. Thus we'll create an exemplary & sustainable urban wildlife location for walks and bird watching, (including much of the land assigned for development), by building for our engagement, on a just a small fraction. This, to realize the dream of a world-class and very impressive "Urban Confluence" with facilities that amaze, even well-traveled holidaymakers. It will be a magnetic and major hub of activity for San Jose, Silicon Valley. Visitors, young and old, from far and wide, will be drawn to our "Oasis" from the stresses of urban life. They will be inspired and transported to a "Garden of Eden", with splendid organic and contrasting geometric forms, representing treasured lifeforms and the promise of mindful use of the most advanced technology to embrace and celebrate life!

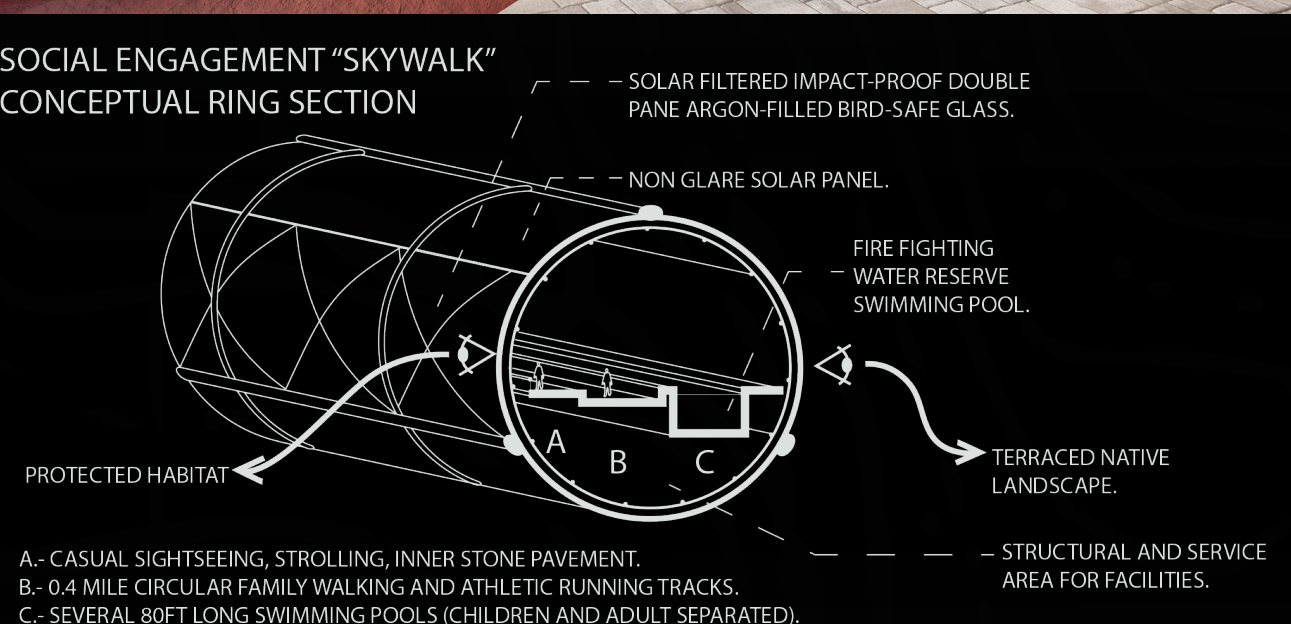
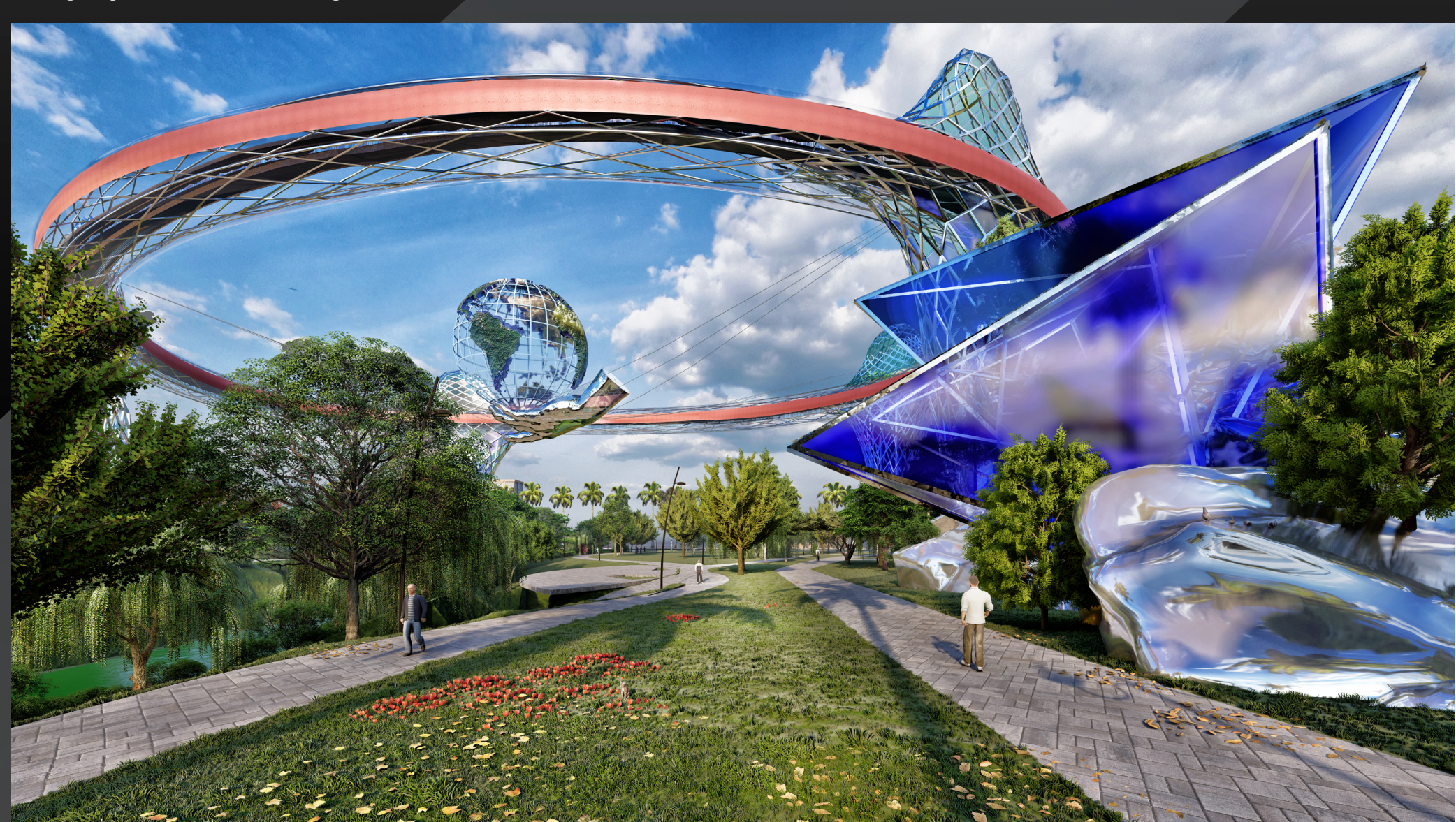


The Ring surrounds the central thematic jewel of the entire Oasis Project: "The Hand of Adam", (Michelangelo, Rodin Museum Paris), cradling the Globe. This represents a beacon reminding us our responsibility to the unique living planet over which we have claimed total dominion. The rendering, above, shows the Ring, (and sketched below), that provides sightseeing and leisurely strolling on the inside, (nearest the center), with adjacent tracks for walking and jogging. At the outer area of the interior, there will be bars, restaurants, clubs, and stores, separate swimming pools for children, adults and for poolside dining. Below the public floor will be service, machinery, batteries for roof solar panels and services for restaurants and stores. Above right, the structure of the Sapphire Crystal Ice skating rink with restaurant, below, (set in the terraced Eastern elevated land). The latter is mostly covered with plantings and trees.

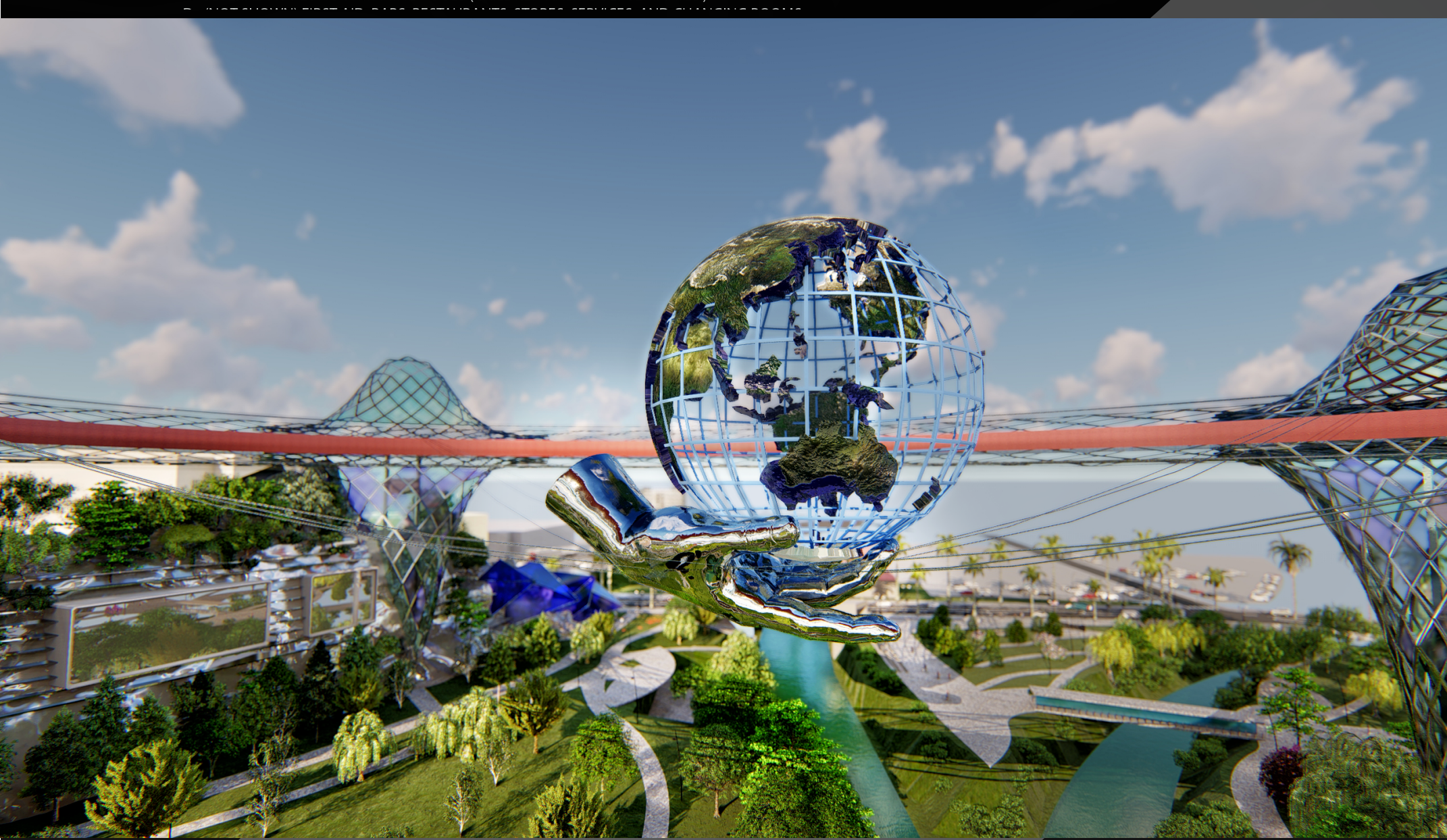


The Dome: (Above left), Provides a multipurpose seated arena with a very unique rotating, major sculpture, "Cathedral of the Mind", with engaging Interactive Art, (using Light, Sound and Enigma), to fascinate, intrigue and mesmerize the explorers! The spacious sound-insulated dome also serves as an inviting, state of art "Community Performance Space", with our rotating sculptural structure, now serving theatrical set changes. The wooden floor has hidden rising sections: new set modules will appear and disappear revealed as our set-change-sculpture rotates.

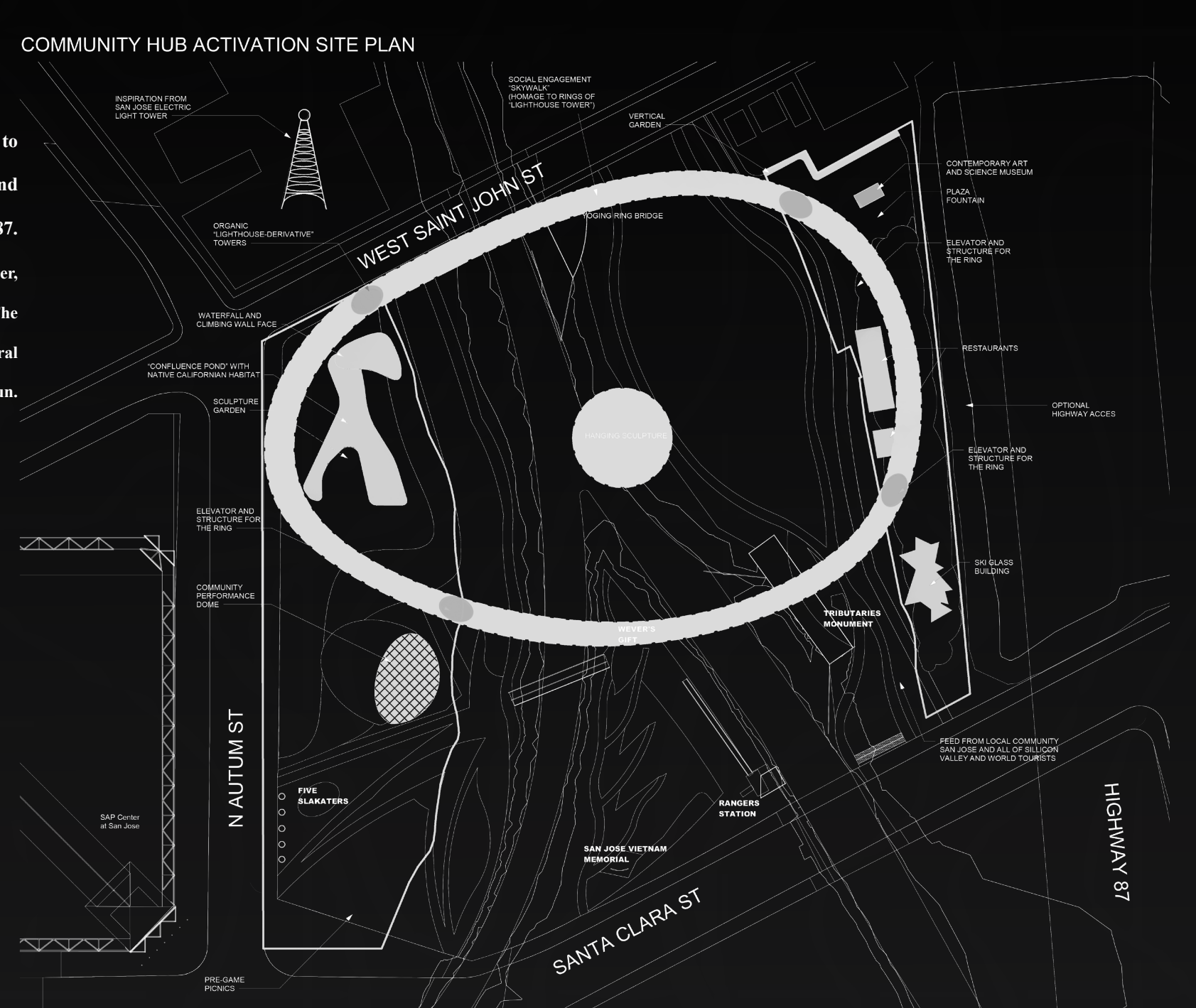
The Sapphire Crystal Ice Skating Rink is offered as a key community recreational resource, with outreach, including, (but far beyond), our loyal Sharks fans, to identify and reach out to different underserved communities, to support and encourage their participation. It is critically important for us to serve and uplift segments of our community that do not have resources, (or role models), to fully share in the American dream. Fun skills, such as ice skating or the activities leading to performance in the "Globe Community Theater," are important parts of a "Doughnut Economy", (Kate Raworth), where not only do we limit resource use by looking at "environmental impact", but we also seek equity in access to the enjoyable fruits of economic and cultural development.



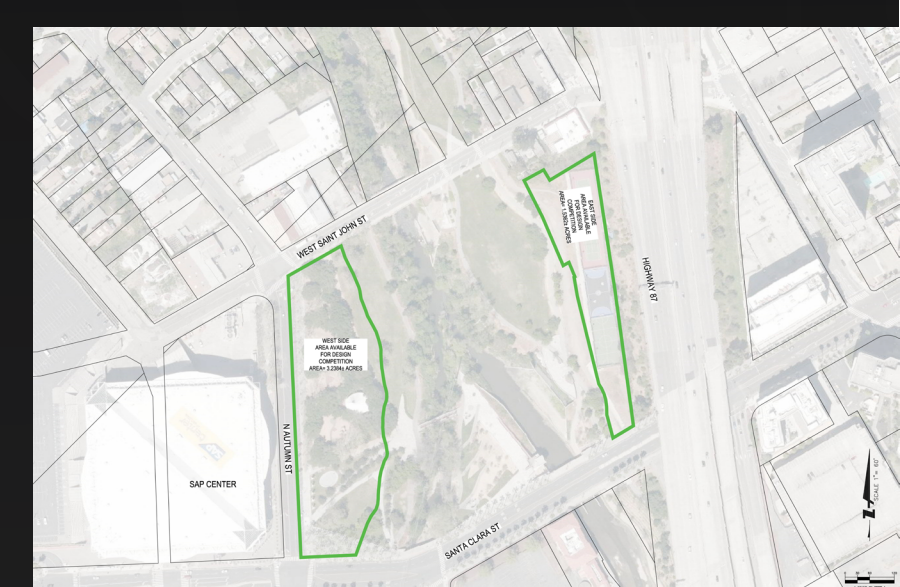
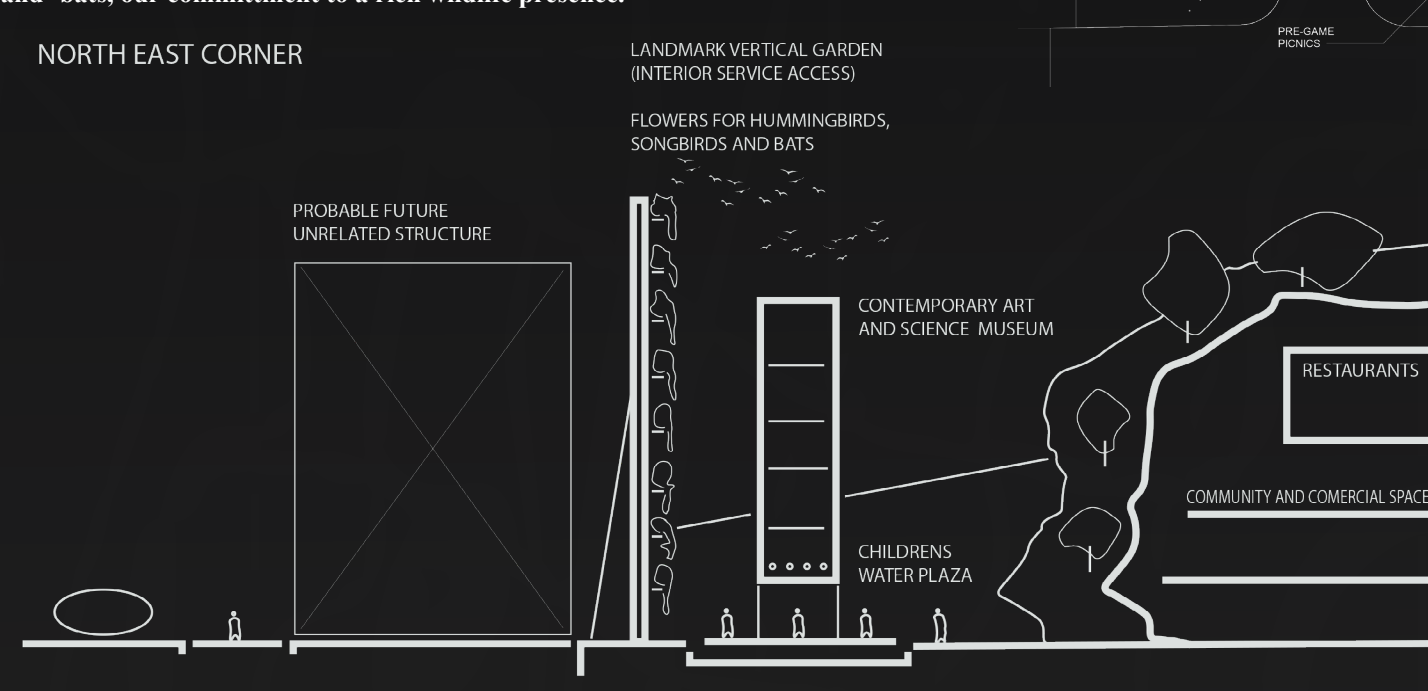
Silicon and Carbon wrestled all night, For who'll devour the morning light.



To the right, we show access to the Oasis project from all sides and hopefully from ramps to the Highway 87. Note that the new "Owen Pond" on the NW corner, reflects the shape of flowing river confluence below! The "Sunset-View" Restaurant, (rectangle opposite the central sculpture), offers a perfect evening experience of the setting sun.



A Plaza for children to ride bikes and play in water. The Tall Stainless Steel Sculpture, "Cathedral of the Mind II", hopefully, will house major Science, Art & Natural History Museums and a library; massive commitments, but worthy to foster an equitable society. To the left is the 200 ft. tall epic flower garden to support birds and bats, our commitment to a rich wildlife presence.





"Confluence Waterfall", "Owen Wildlife Pond" and "20th Century + Sculpture Garden"

From a tall natural rock, (natural rock on steel), with rich tree and shrub plantings, a waterfall will thunder to a naturally stocked pool below, a fresh water ecosystem with fish, frogs, lizards and marauding dragonflies to eat mosquito larvae. We expect migrating geese and other water birds. We can invite art collector's, personalities, movie stars and Silicon Valley successes, to support a 20th Century + Modern Art Sculpture Collection. There must be works, held locally, by Giacometti, Rodin, Picasso, Henry Moore and others, where a bespoke, well regarded home would be valued and supported. For now, I can offer a number of substantial works to seed the collection, prior to gifts & loans arriving.



***"Carbon the basis for life, diversity, thought & culture ...
Curvaceous organic shapes, enhanced in geometric forms by Silicon!"***

In the SW area, all existing art will be highlighted with plantings and lighting. Lawns will be installed for pre-game and pre-theater picnics but otherwise, plantings will be native to California. Below left, we show "Eve from Adam's Rib" a work in pigmented and mirror-faced stainless steel.



Dome Performance Center: A Piano Recital (Sculpture is always raised well above audience's view of the stage).



The Guadalupe River is navigable: a craft has reached San Francisco bay! So we'll see new, small-craft activities. Thus, the "Little Italy neighborhood, (on our N. border), might initiate Gondola trips, adding color and vibrancy, enabling us "to touch" the river scene. The waterway is used by salmon, birds, beavers, territory for bats owls, woodpeckers and a host of other wildlife migrating. Our replanting in the Oasius project, on our assigned land, provides for cautious addition of Californian plants for a far more robust support of wildlife. So we take a little, enjoy a lot, returning much more!

...Below the West & East hillsides, floor space assignable for community activities, from a bazaar market to Arts, Performance and Theater Schools and spaces to meet future community needs and for approved commercial space.

