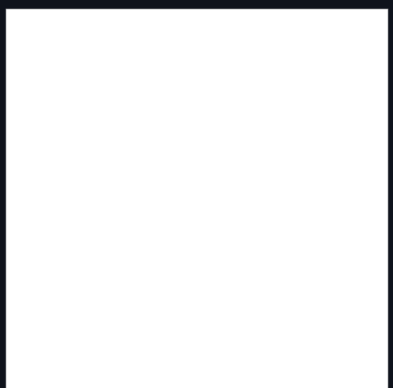


# PIXEL TOWER



IMAGINE STANDING ON THE OBSERVATION DECK AT THE ROOFTOP OF PIXEL TOWER, A ONE-OF-A-KIND BUILDING IN THE HEART OF SILICON VALLEY. YOU ARE AT THE CENTER OF WHERE THE FUTURE IS BEING FORGED. FROM HERE YOU CAN SEE FAR AND WIDE, TO THE DISTANT FOOTHILLS AND THE GLITTER OF SAN FRANCISCO BAY, WHERE PLANES LAND AND TAKE OFF FROM THE INTERNATIONAL AIRPORT, RISING ABOVE THE BAY AREA'S HIGH TECH HUB. YOU CAN LOOK OVER THE VALLEY AND WONDER WHAT KIND OF TOMORROW IS EMERGING FROM THIS FERTILE SOIL OF INNOVATION, LETTING YOUR IMAGINATION SOAR ALONG.

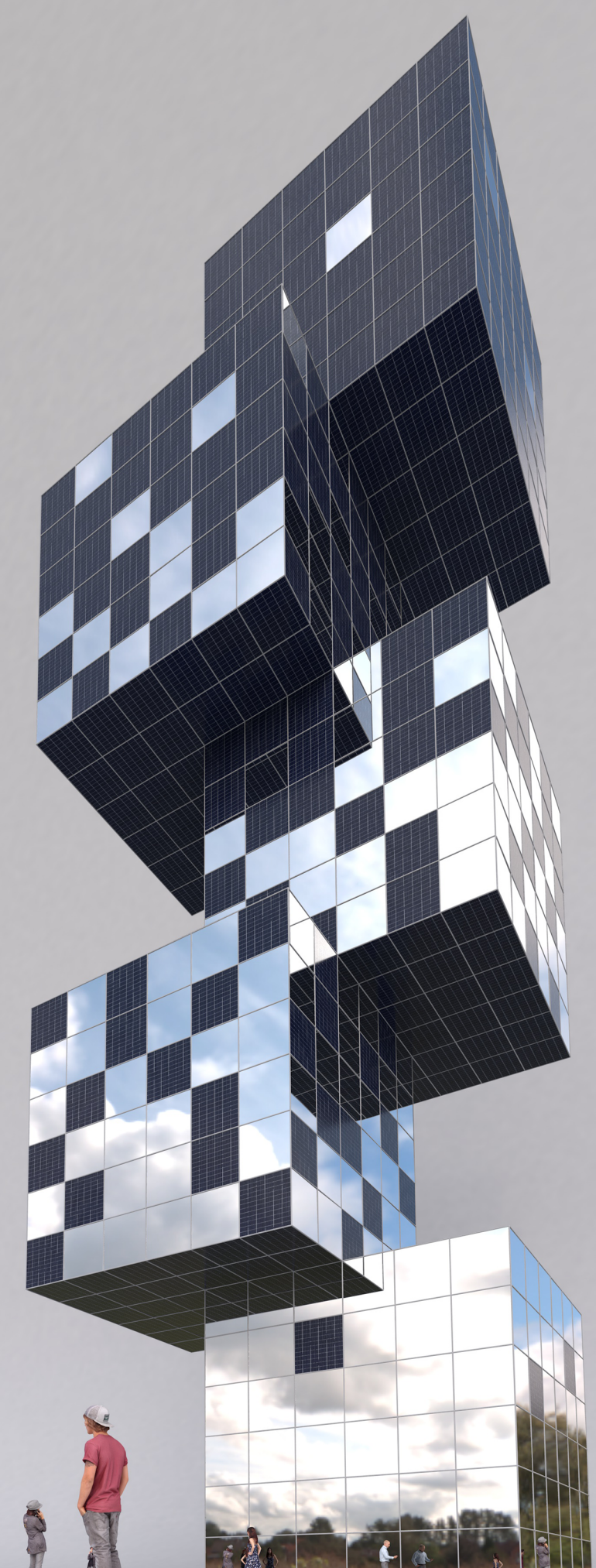
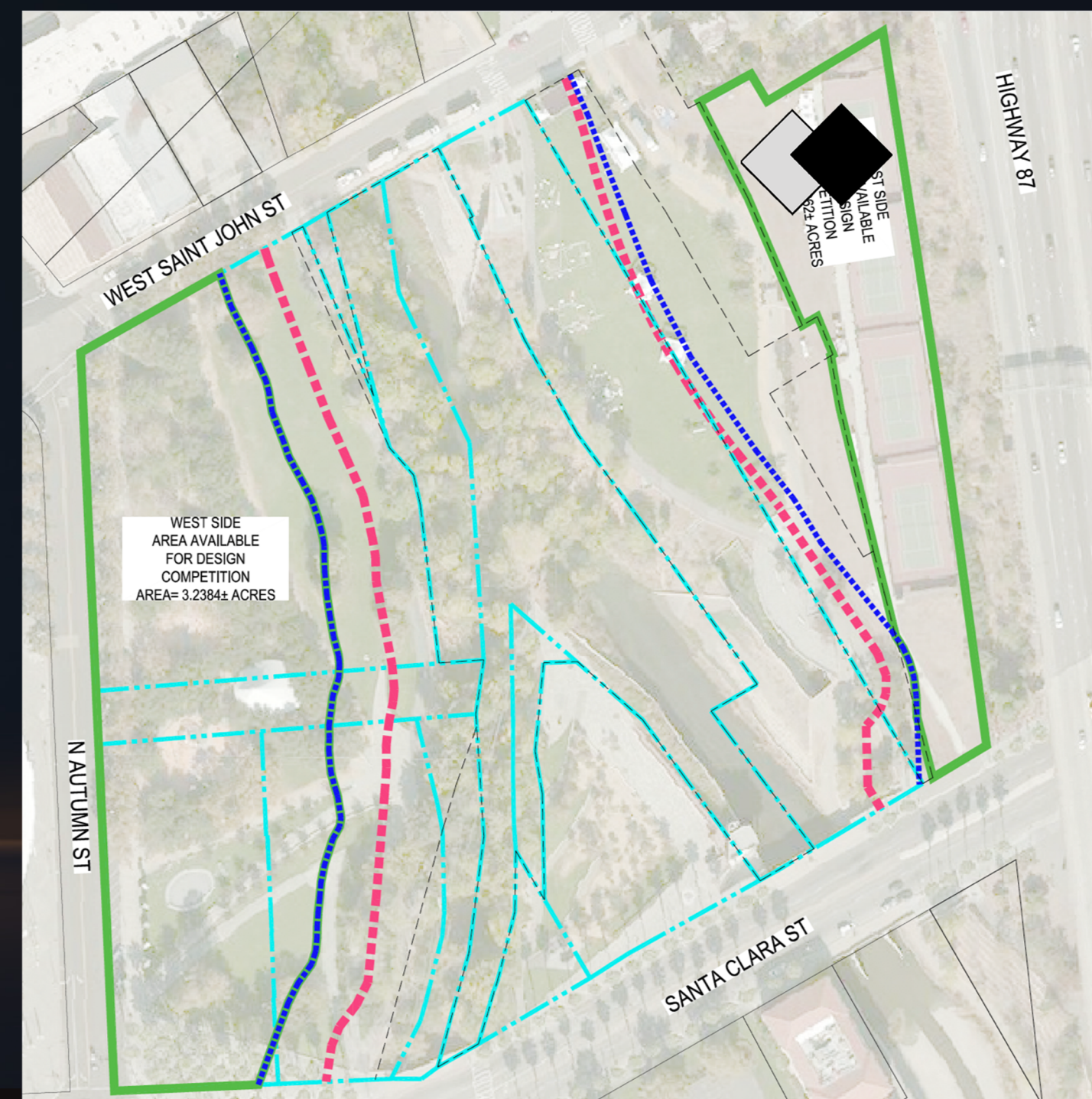
A PIXEL IS THE BASIC UNIT OF A DIGITAL IMAGE. PIXEL TOWER IS A TRIBUTE TO THE INGENUITY OF SILICON VALLEY TECHNOLOGICAL INNOVATION. THIS IS A SIMPLE YET TRANSFORMATIVE DESIGN FOR A MULTI-PURPOSE BUILDING THAT BOTH SERVES AND CELEBRATES ITS COMMUNITY.

FROM A DISTANCE ITS SILHOUETTE APPEARS A-TECTONIC, WITH FIVE CUBES STACKED ASYMMETRICALLY, CREATING A STUNNING COMPOSITION. THE BUILDING'S SURFACE IS CLAD WITH A COMBINATION OF CLEAR, OPAQUE AND REFLECTIVE GLAZING PANELS IN A SEEMINGLY RANDOM PATTERN, FORMING WHAT APPEARS TO BE OVERSIZED PIXELS.

LOCATED AT THE EAST SIDE PARCEL, NEAR THE INTERSECTION OF WEST ST. JOHN'S STREET AND HIGHWAY 87, THE STRUCTURE EMERGES FROM EXISTING OPEN SPACE ALLOWING ACCESS TO A COLLECTION OF PUBLIC USES, INCLUDING VISITOR CENTER, COFFEE SHOPS AND RESTAURANTS, RETAIL AND ART GALLERIES. GROUND LEVEL OF THE BUILDING OPENS UP AND INTEGRATES THE ENHANCED PUBLIC PARK, PROVIDING INDOOR-OUTDOOR SPACES FOR VISITOR ORIENTATION, INTERPRETATION, COMMUNITY GATHERINGS AND EVENTS.

THE MIRROR SURFACE OF THE STRUCTURE REFLECTS ITS NATURAL SURROUNDINGS, LETTING THE LANDSCAPE FEATURES "DISSOLVE" IN THE BUILDING. THE SMALL 40' X 40' FOOTPRINT ENSURES MINIMAL IMPACT ON ENVIRONMENT, AND THE OPAQUE CLADDING IS PHOTOVOLTAIC PANELS THAT HARVEST SOLAR ENERGY, RESULTING IN NET-ZERO ENERGY USE. AT NIGHT MAGICAL LIGHTING EFFECTS DRAW LOCALS AND VISITORS TO THIS ICONIC SCULPTURAL REPRESENTATION OF SILICON VALLEY, PAYING HOMAGE TO THE SAN JOSE ELECTRIC LIGHT TOWER THAT ONCE ILLUMINATED THE EVER-EVOLVING CITY.

- MULTI-PURPOSE BUILDING: CAFES, GALLERIES, VISITOR CENTER
- DISTINCTIVE BUILDING FORM
- CONTRASTING EXTERIOR PANELS AS INNOVATIVE "WORKING" CLADDING
- ROOFTOP OBSERVATION DECK
- SMALL BUILDING FOOTPRINT MINIMIZES ENVIRONMENTAL IMPACTS
- NET ZERO ENERGY APPROACH: 50% OF SURFACE AREA ARE SOLAR PANELS
- INTEGRATION WITH OPEN SPACE TO CELEBRATE COMMUNITY ENGAGEMENT AND HUMANITY
- MULTI-FUNCTIONAL LIGHTING OPTIONS – BUILDING AS A "LANTERN"





## PIXEL TOWER:

- › MULTI-PURPOSE BUILDING: CAFES, GALLERIES, VISITOR CENTER
- › DISTINCTIVE BUILDING FORM
- › CONTRASTING EXTERIOR PANELS AS INNOVATIVE “WORKING” CLADDING
- › ROOFTOP OBSERVATION DECK
- › SMALL BUILDING FOOTPRINT MINIMIZES ENVIRONMENTAL IMPACTS
- › NET ZERO ENERGY APPROACH: 50% OF SURFACE AREA ARE SOLAR PANELS
- › INTEGRATION WITH OPEN SPACE TO CELEBRATE COMMUNITY ENGAGEMENT
- › MULTI-FUNCTIONAL LIGHTING OPTIONS – BUILDING AS A “LANTERN”

