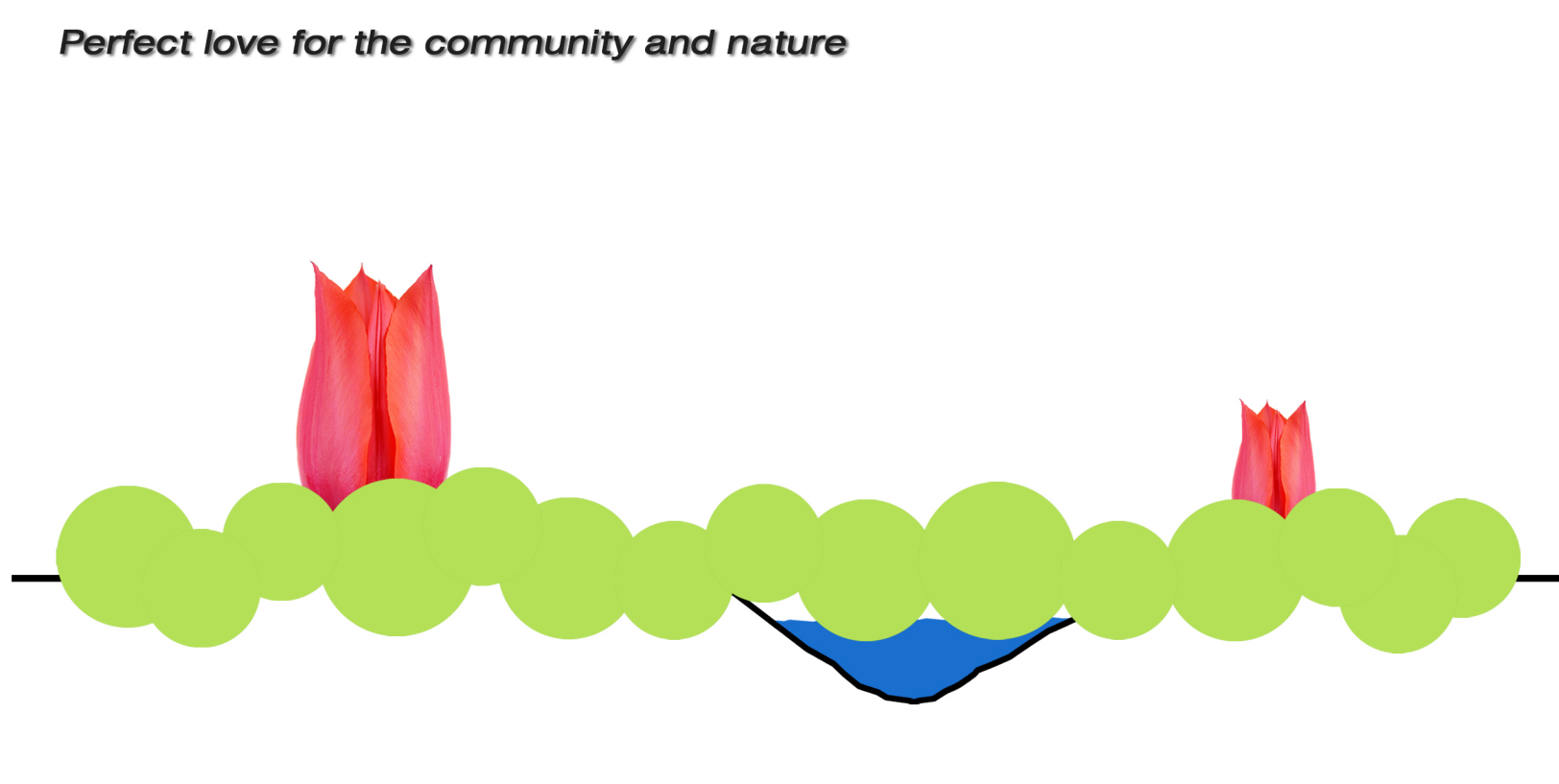
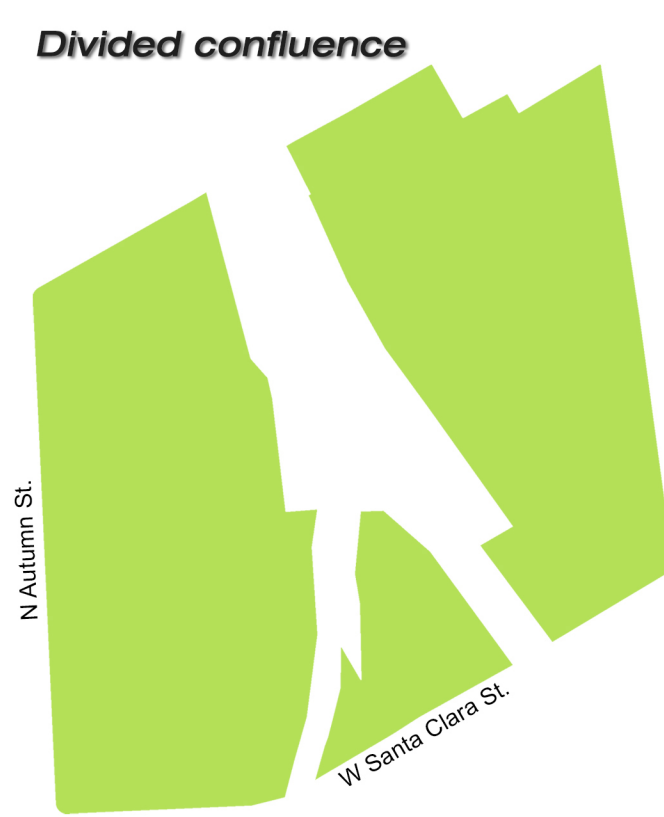
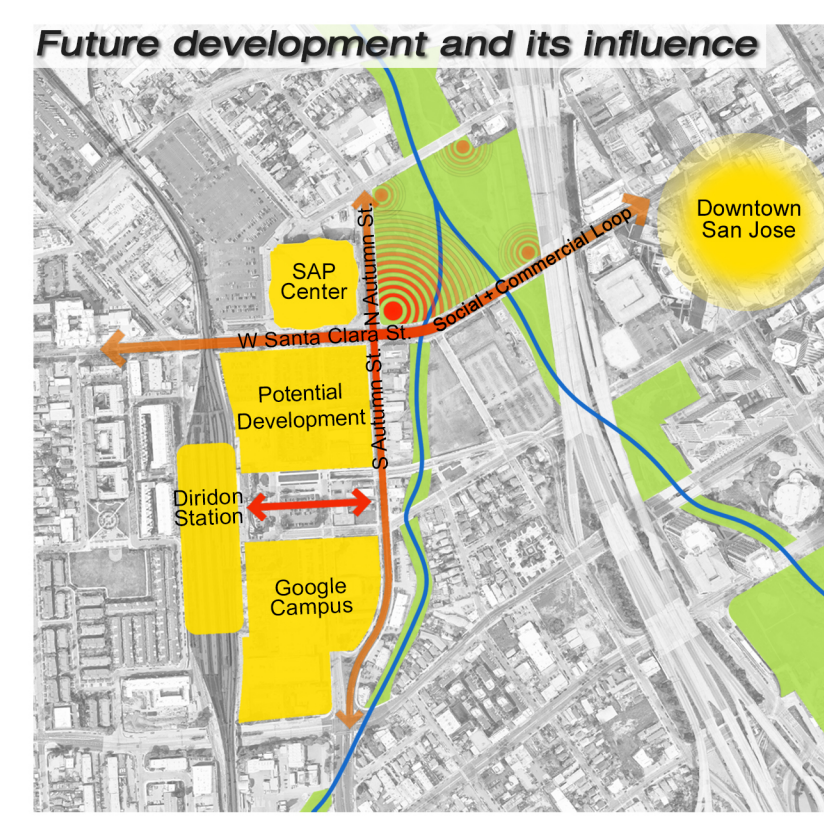
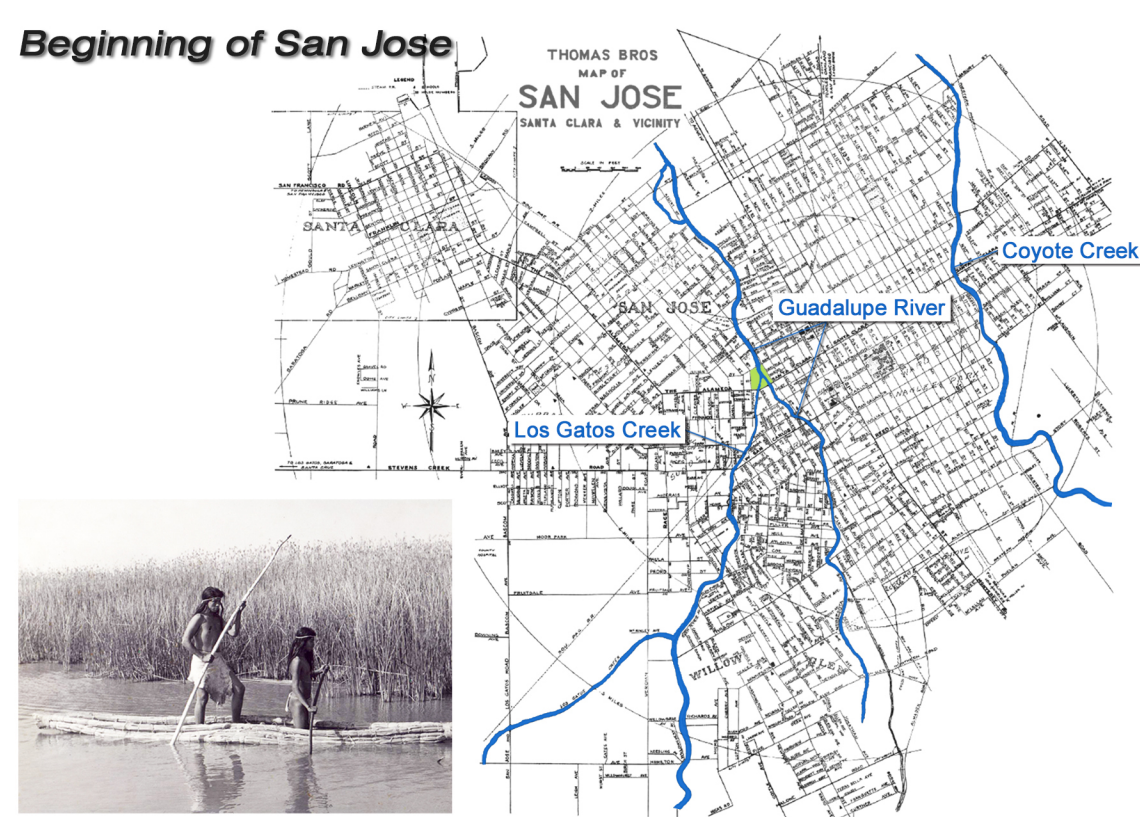


Gateway to the confluence



RISING ARCH is the symbol of San Jose City and represents the unique spirit and multi-cultural attitude toward an innovative destination.

observation deck & bridge level
vertical circulation



The River is where stories began. The stories of everyday life have explored and expanded along the river. The dependable and vital resource hasn't changed since the first community of the Costanoan-Onlone tribe settled in San Jose. The stories, however, have been divided along the mother earth as pieces by the river.

Future urban development and its influence in the city of San Jose are an important factor; furthermore, the role and location of the design should be addressed for the development and the future of the community.

The site, Arena Green, is adjacent to the SAP center and Diridon station along Santa Clara Street and Autumn Street. These provide the site with access to public transportation and the planned ten million square-foot Google campus. Diridon station is furthermore, the primary transportation hub for the city of San Jose connecting to both neighboring

and distant cities. That access will also link directly between Arena Green and the heart of downtown San Jose. The intersection of these two streets ultimately will be the main access point for the Arena Green site.

The site is very special since it is the convergence of Guadalupe River and Los Gatos Creek which runs through the city of San Jose. However, this confluence has divided the park into three pieces. As the result, the park hasn't been fully utilized in an efficient manner.

The design emerged not only as an iconic structure, but also to create **One Park**. The divided park will be reborn as connecting three isolated pieces into one pleasant and efficient place. The gateway will also welcome and connect the community of San Jose to the site and position Arena Green as a family-friendly destination.

Introducing new and affiliate programs brings more attractions to the community. Doing so also establishes the

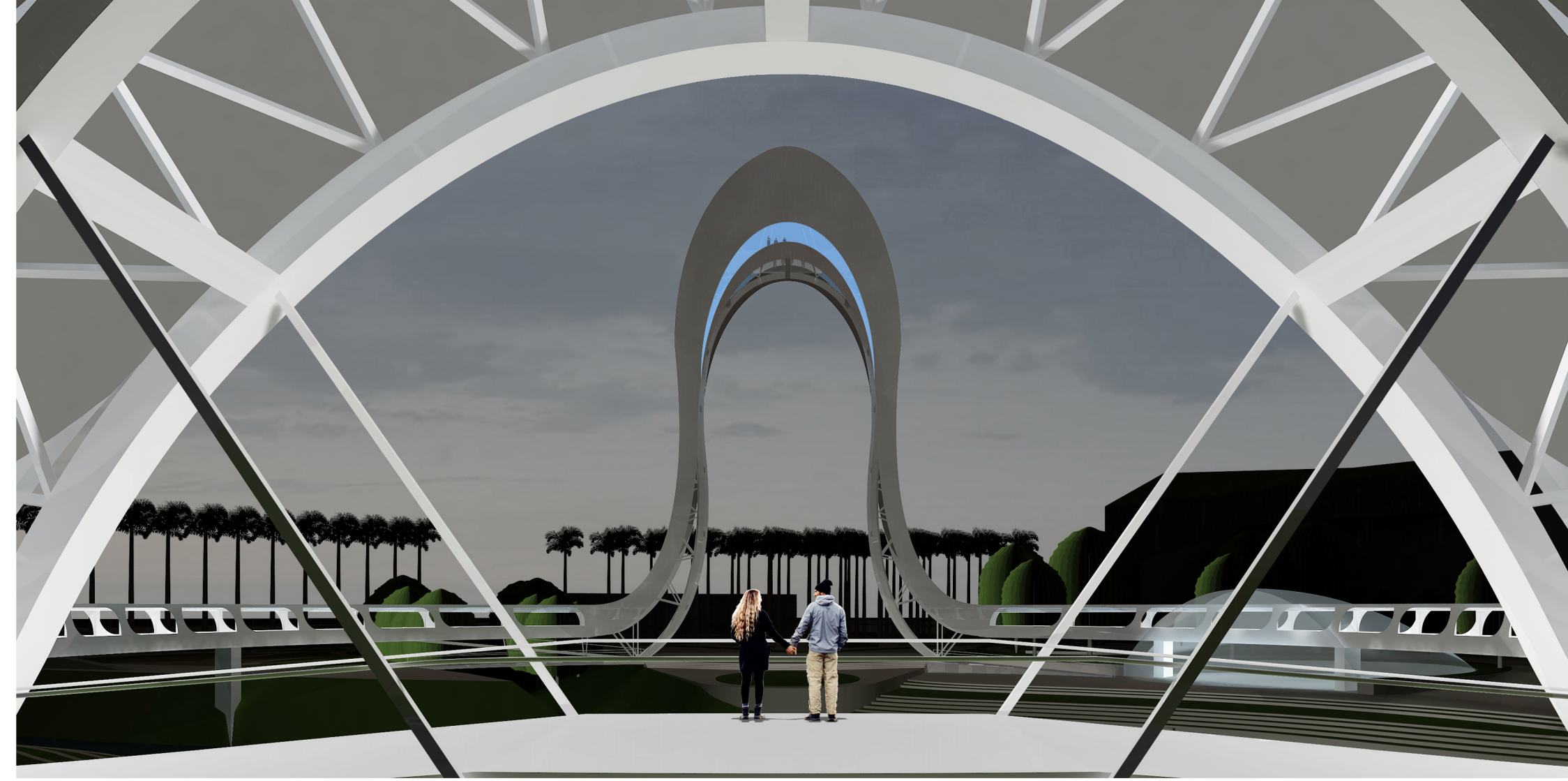
park as a place to learn and explore the history of San Jose. These opportunities will include: a Performance Stage for community events, a Visitor's center with cafe, wetland ecosystems for cleaning the river through natural processes, a canoe station to explore historical features and enjoy water recreation and the observation deck with a looped Bridge.

Finally, the motivation of the gateway is a tulip flower whose meaning represents **Perfect Love**. Visitors and those passing by the Arena Green will observe the structure as a part of nature in the park.

The story of San Jose started along the rivers in the past and we now celebrate the divided stories as **ONE BIG STORY**- the pride of San Jose embodied in a confluent community destination.



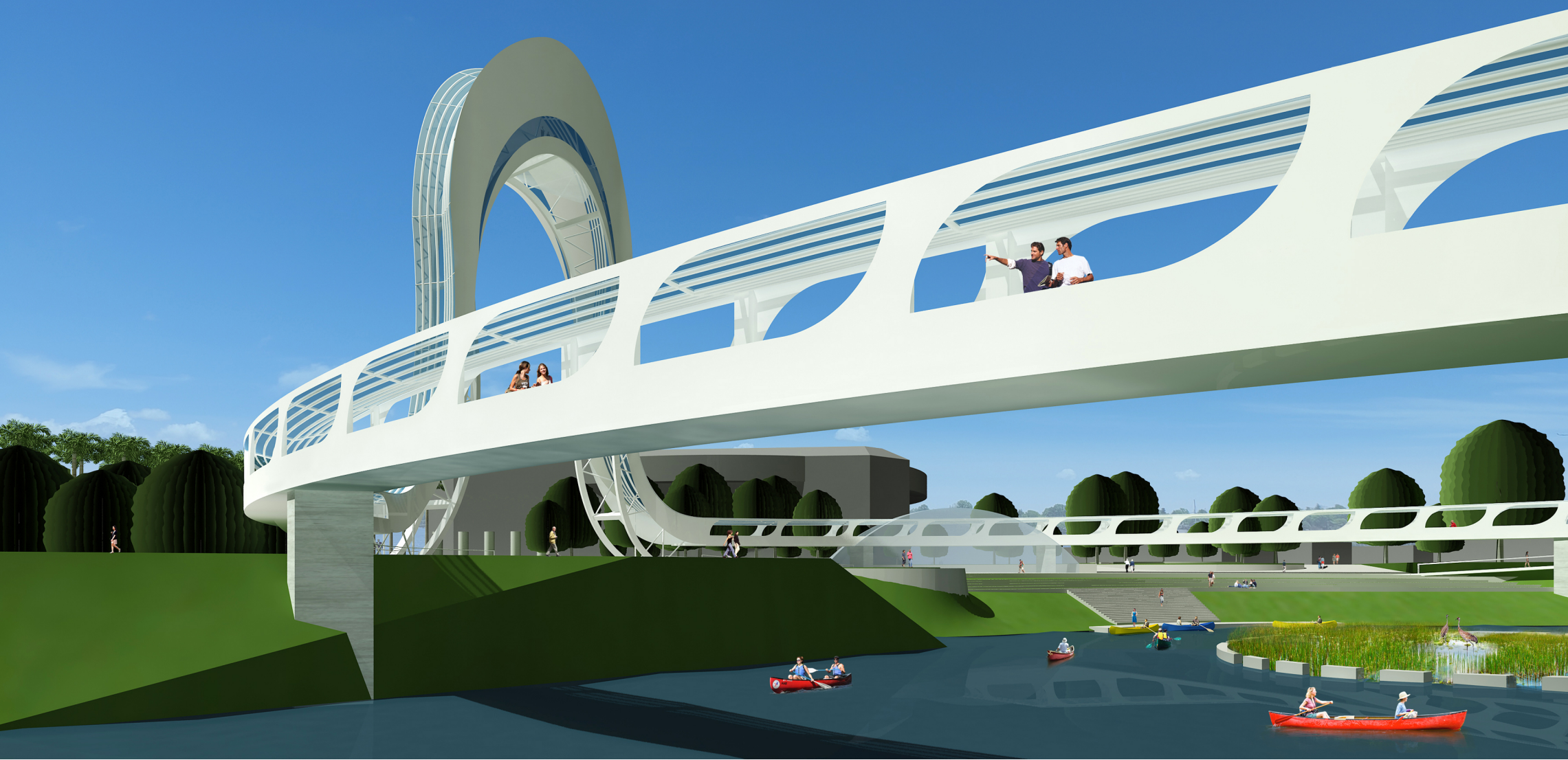
At the gateway looking inside of the loop



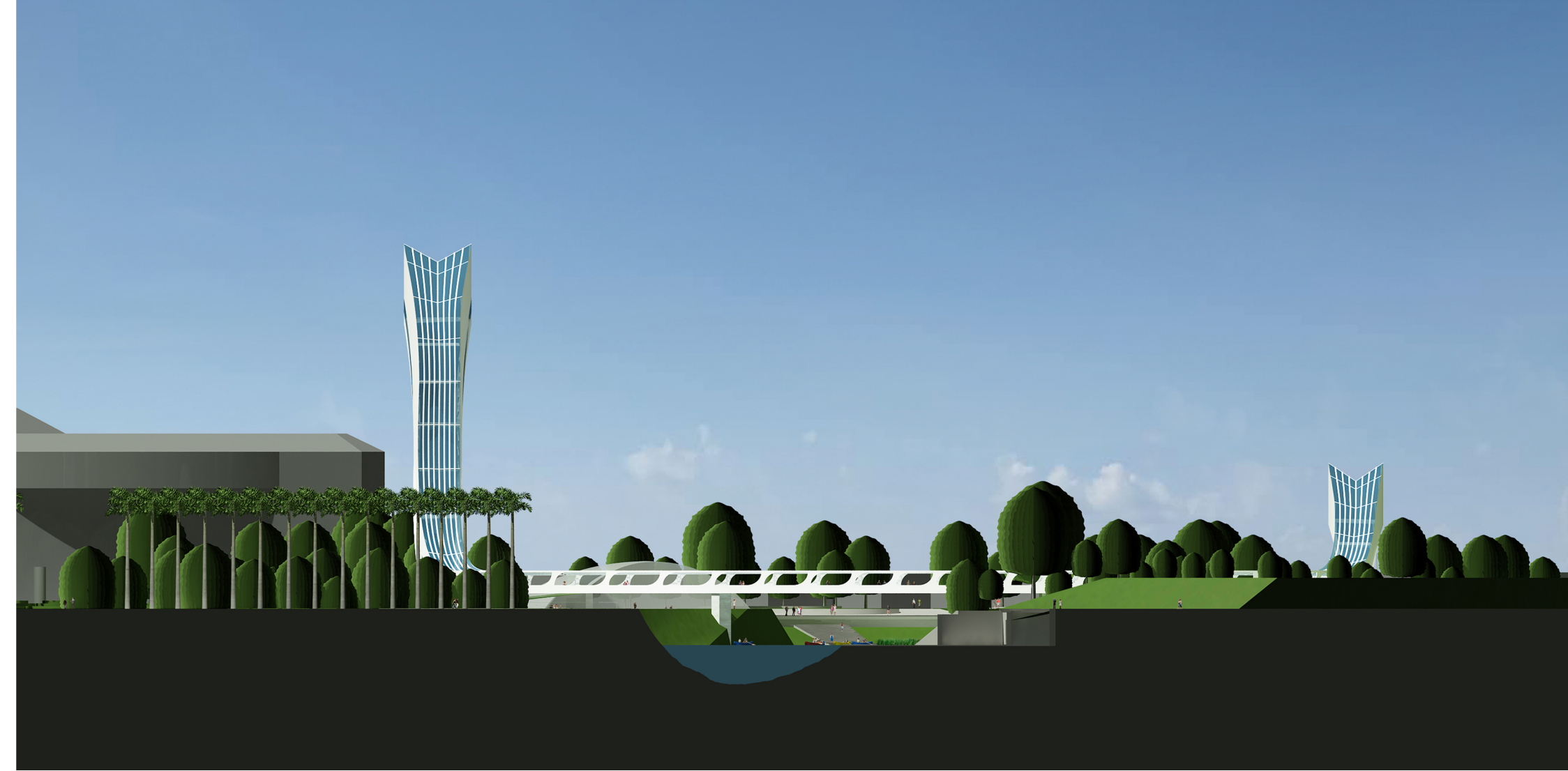
Night view from second arch - the RISING ARCH shines at night



Site plan



The view of the bridge and gateway



South east elevation / view from downtown San Jose



View from Guadalupe Freeway 87 - an image of the design will change depending upon the viewer's location just as each individual looks at their own destination.