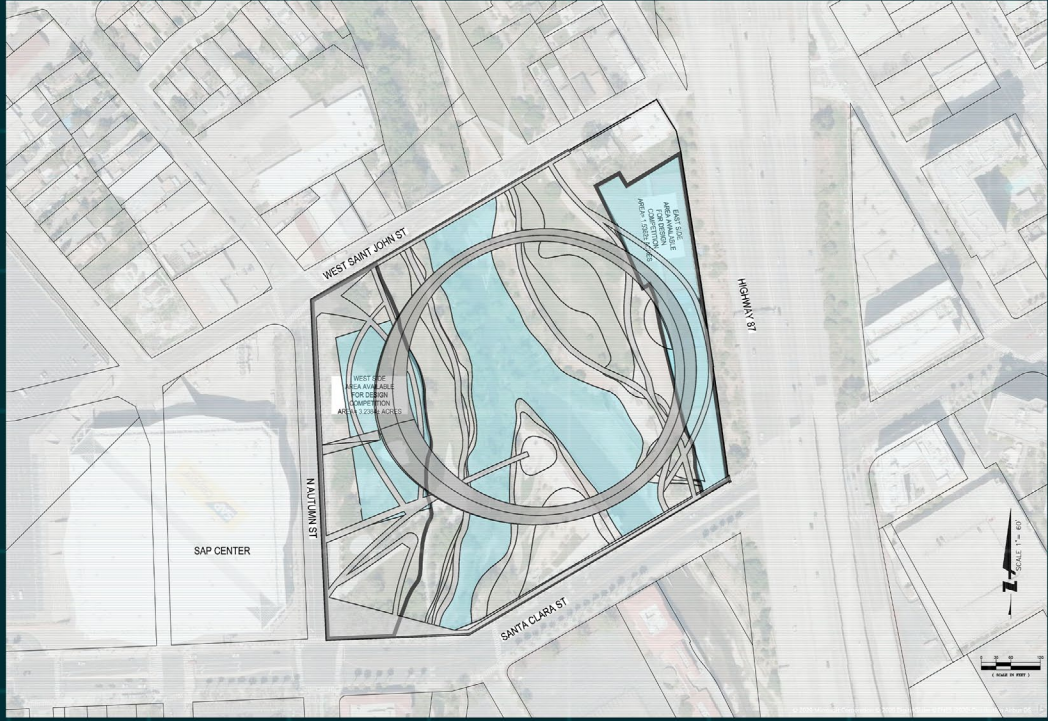


INFINITY RING

A ring which frames the confluence point. It bends upwards, creating two bridges. The observer can contemplate different shapes from different perspectives: an arch, a U-shaped structure, a circle, a heart, and an infinity symbol. Lights delineate the shape of a feminine curve in the darkness of the night. A spectacular light show helps to appreciate a different shape, as times goes by.
The Infinity Ring.

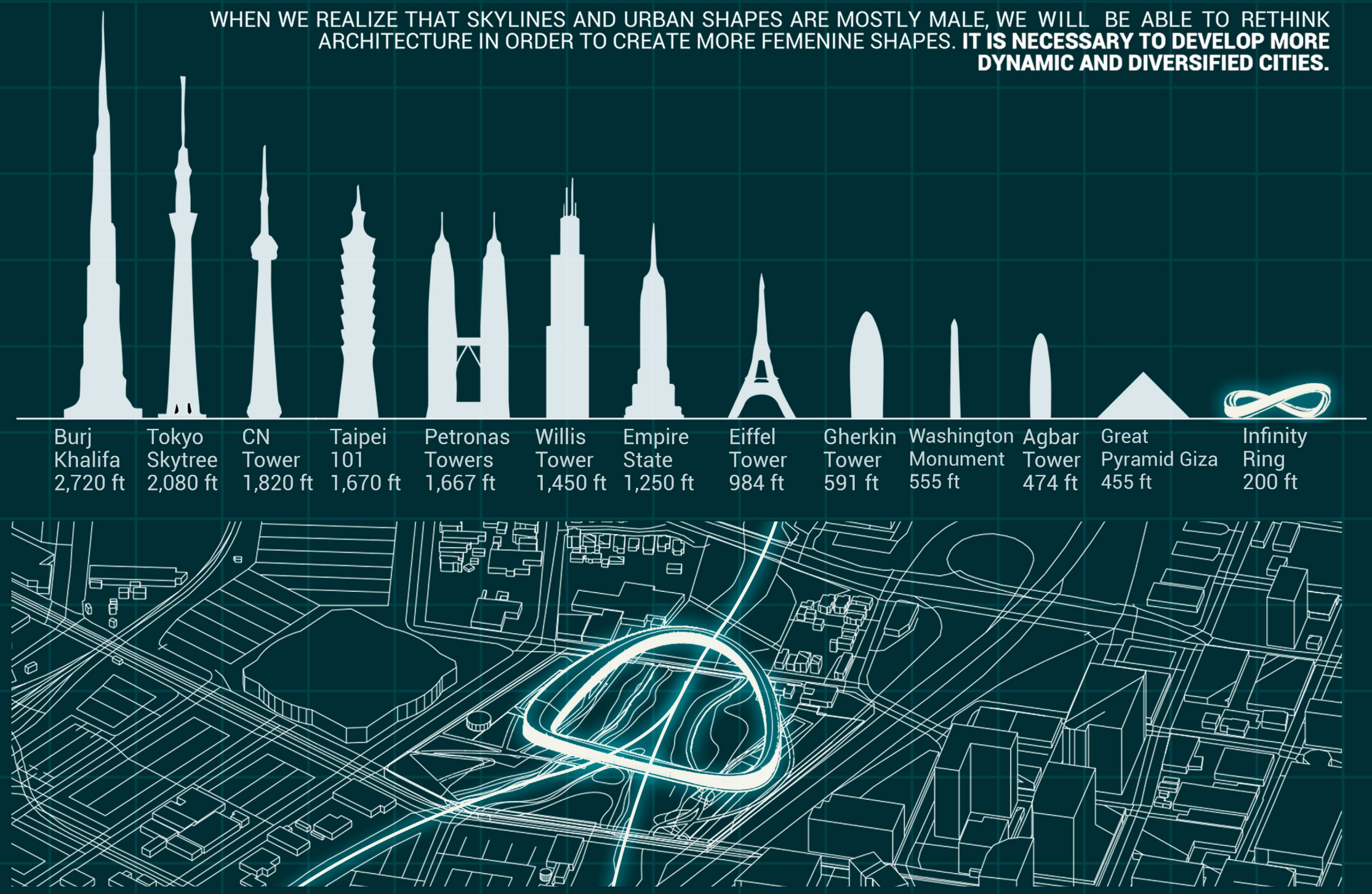


SITE MAP



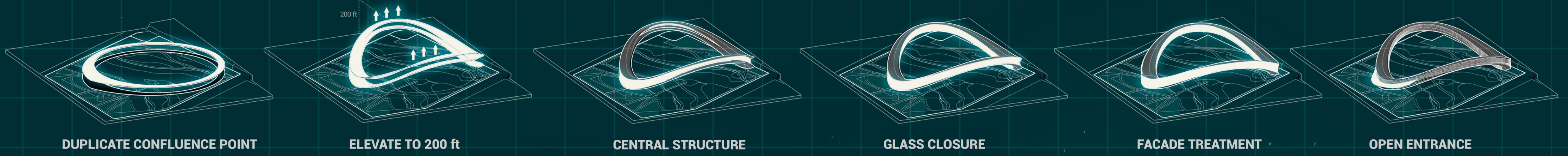
CONFLUENCE POINT

WHEN WE REALIZE THAT SKYLINES AND URBAN SHAPES ARE MOSTLY MALE, WE WILL BE ABLE TO RETHINK ARCHITECTURE IN ORDER TO CREATE MORE FEMENINE SHAPES. IT IS NECESSARY TO DEVELOP MORE DYNAMIC AND DIVERSIFIED CITIES.



URBAN CONNECTION

FORM PROCESS

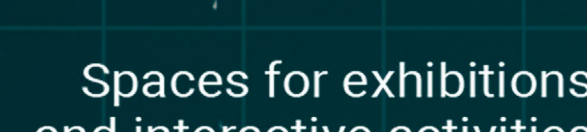


PROGRAM

Eating place and services
Great viewpoint



Connections through
mechanic stairs



Spaces for exhibitions
and interactive activities

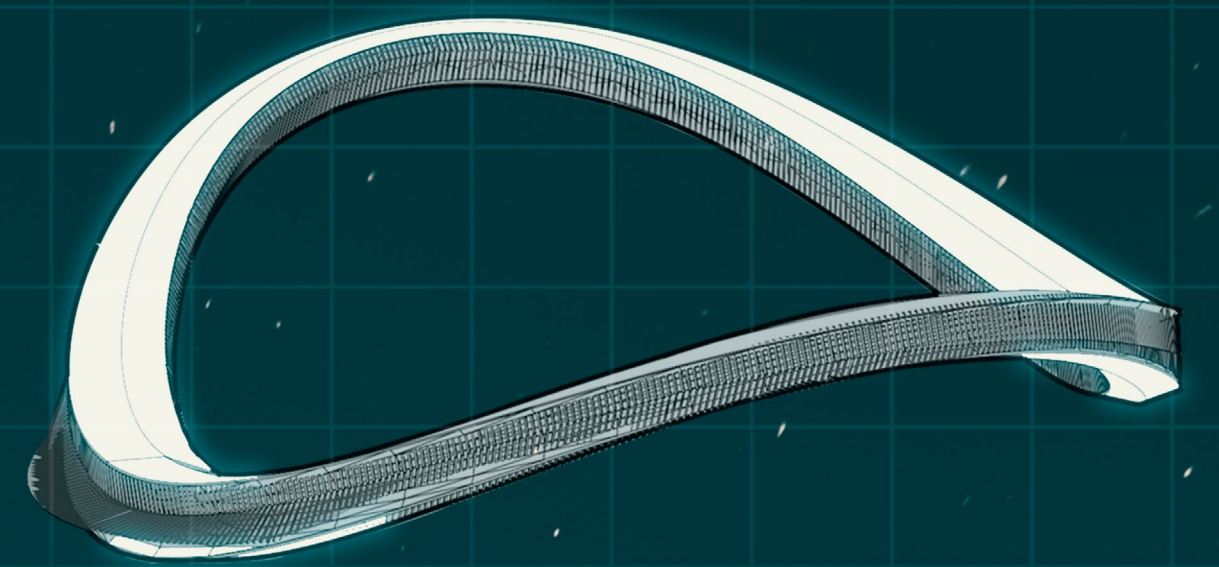


Entrance and Coffee



STRUCTURAL APPROACH

Works like a giant beam



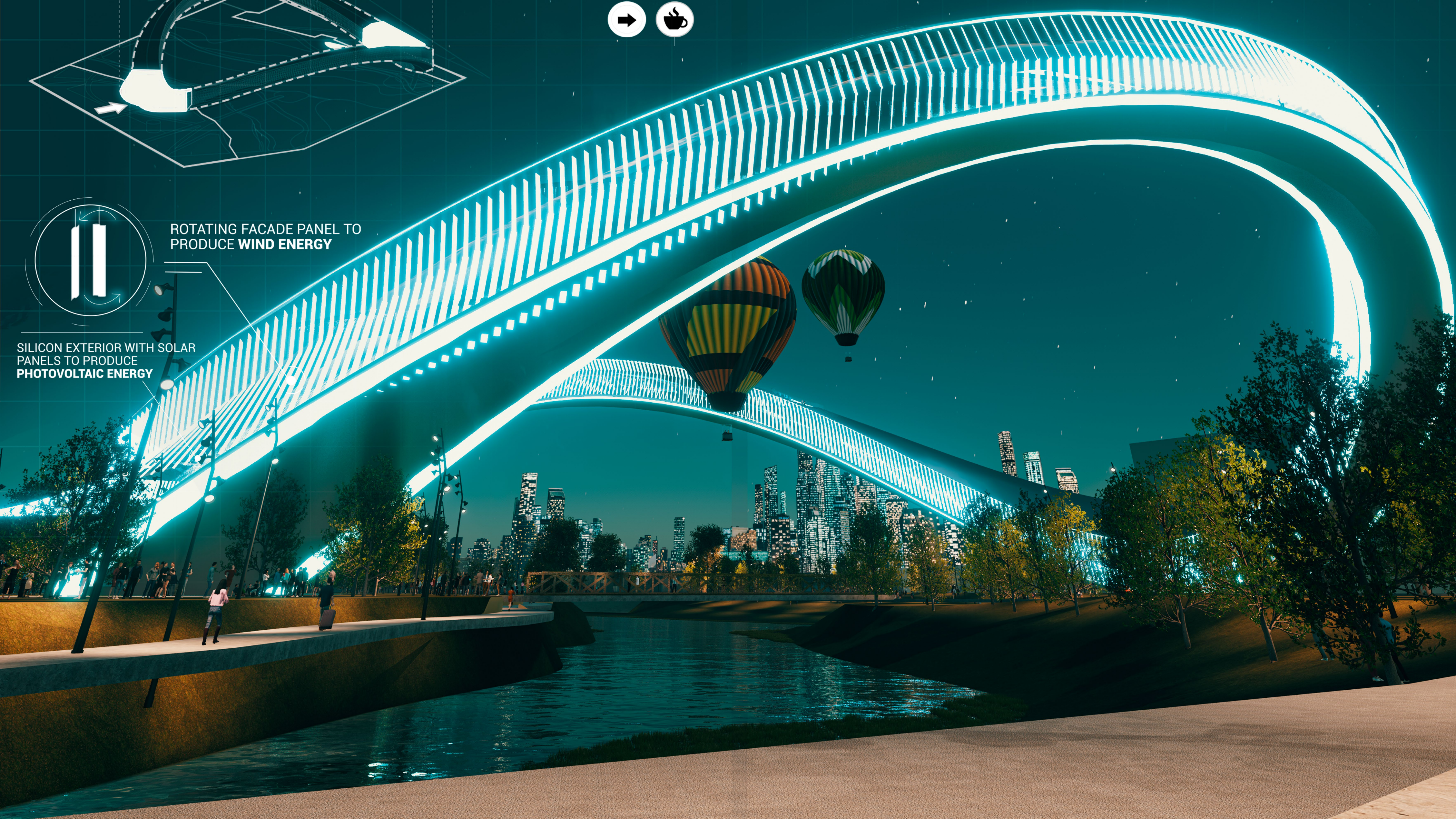
DYNAMIC FORM

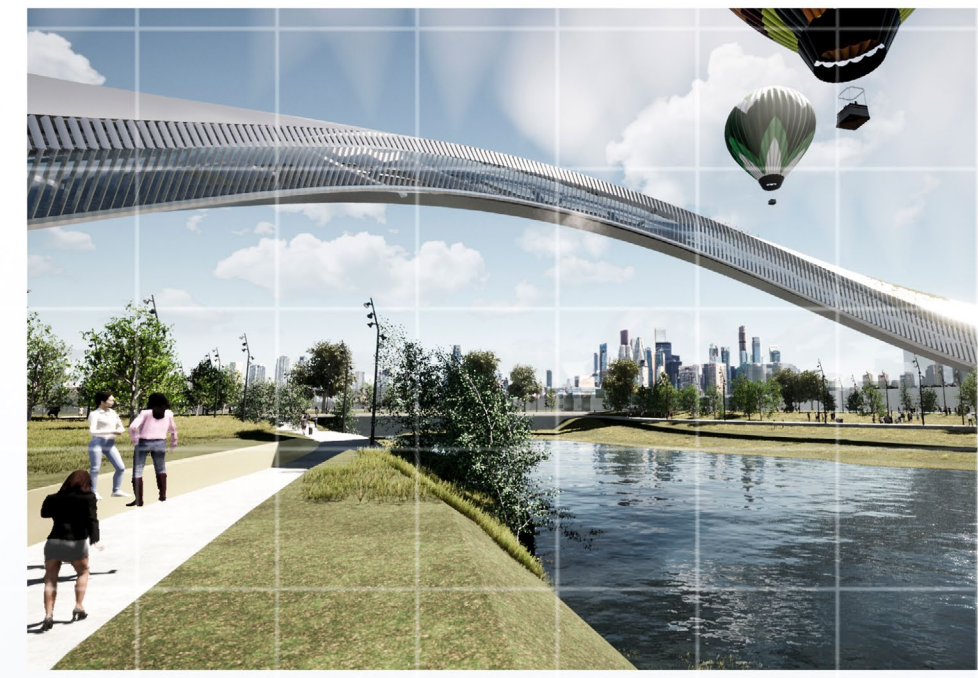
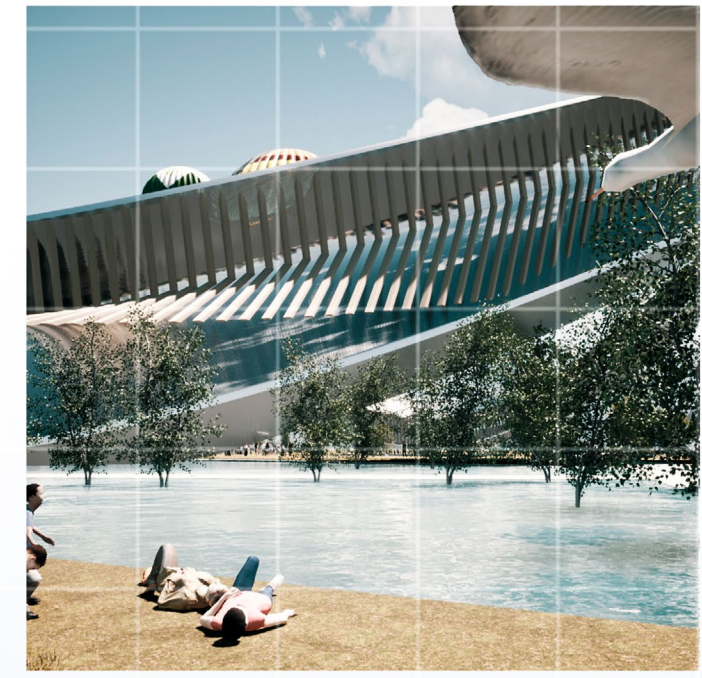
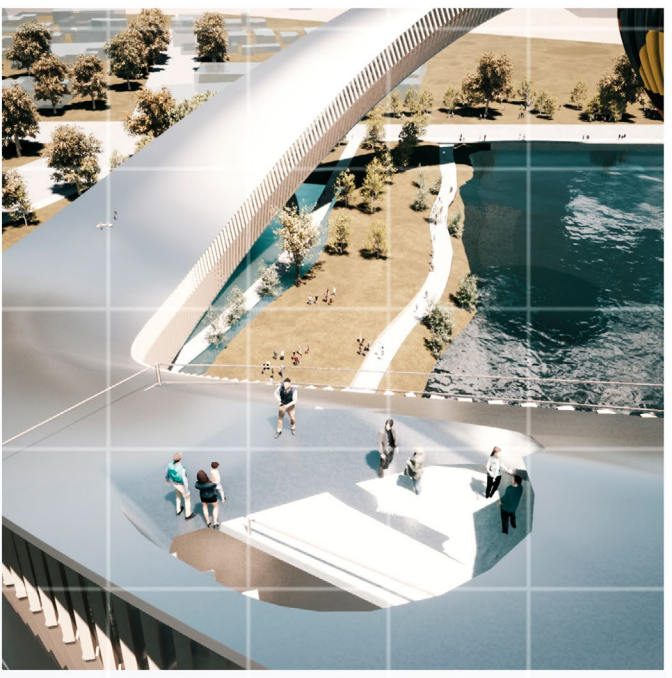
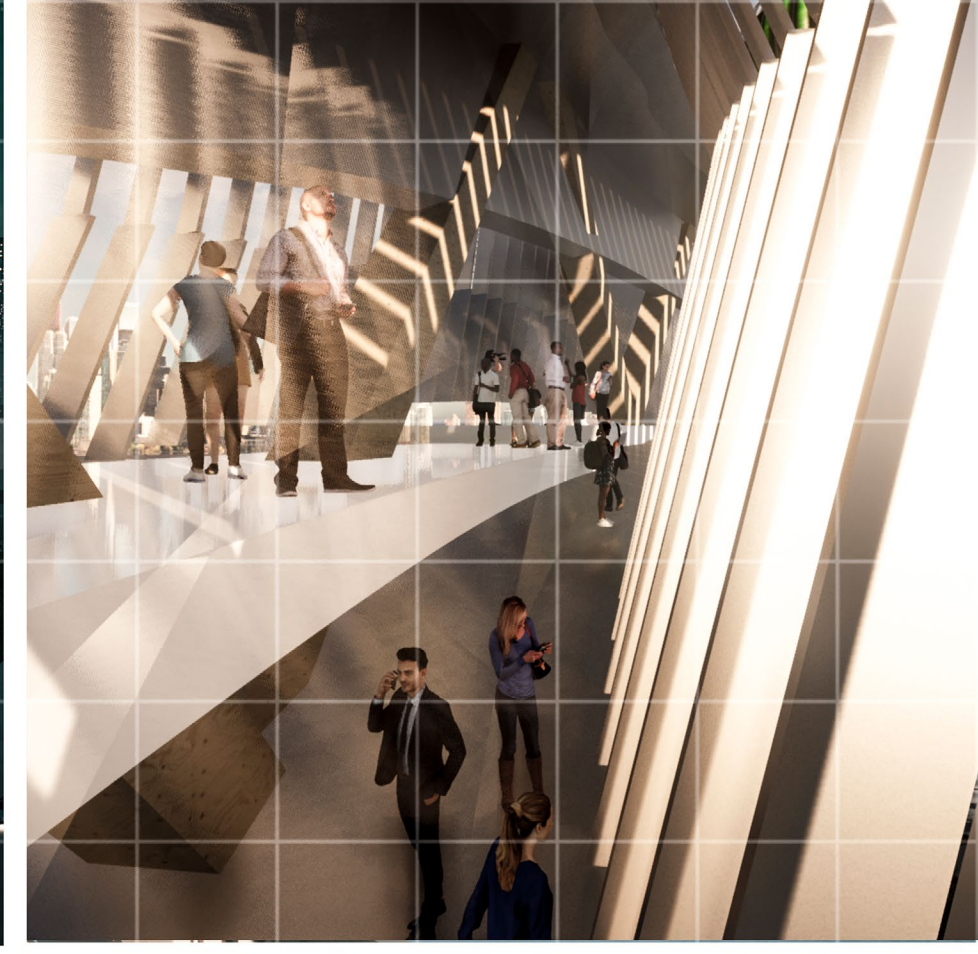
The footbridge shows a dynamic form.



ROTATING FACADE PANEL TO PRODUCE WIND ENERGY

SILICON EXTERIOR WITH SOLAR PANELS TO PRODUCE PHOTOVOLTAIC ENERGY





BRANDING

The image of the building is so significant and memorable in each of its corners and perspectives, that it can generate a **"brand image"**.

The branding possibilities for the building are very varied, creating a **recognizable silhouette** throughout the world.

The wide variety of possible products adds to the remarkable photogenic appeal of the building from any point of view. This confluence strengthens the **iconic image** of the **Infinity Ring**.

