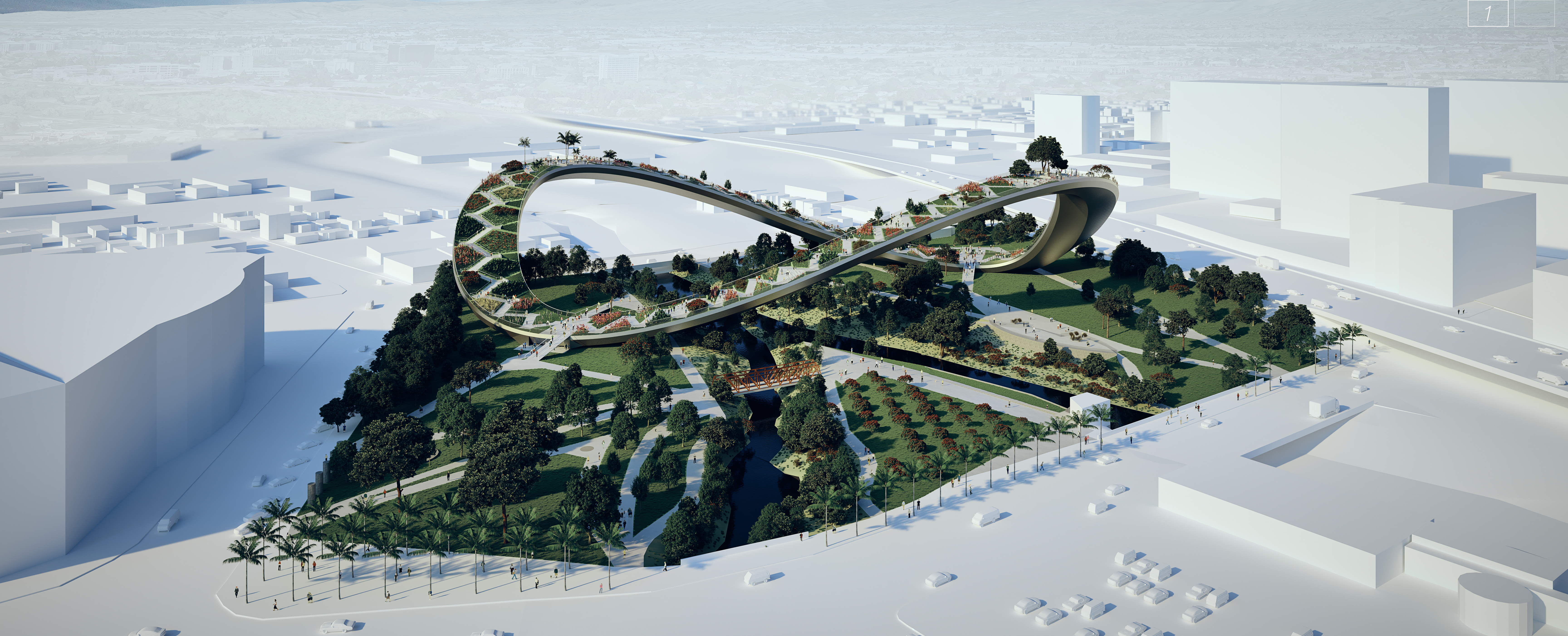
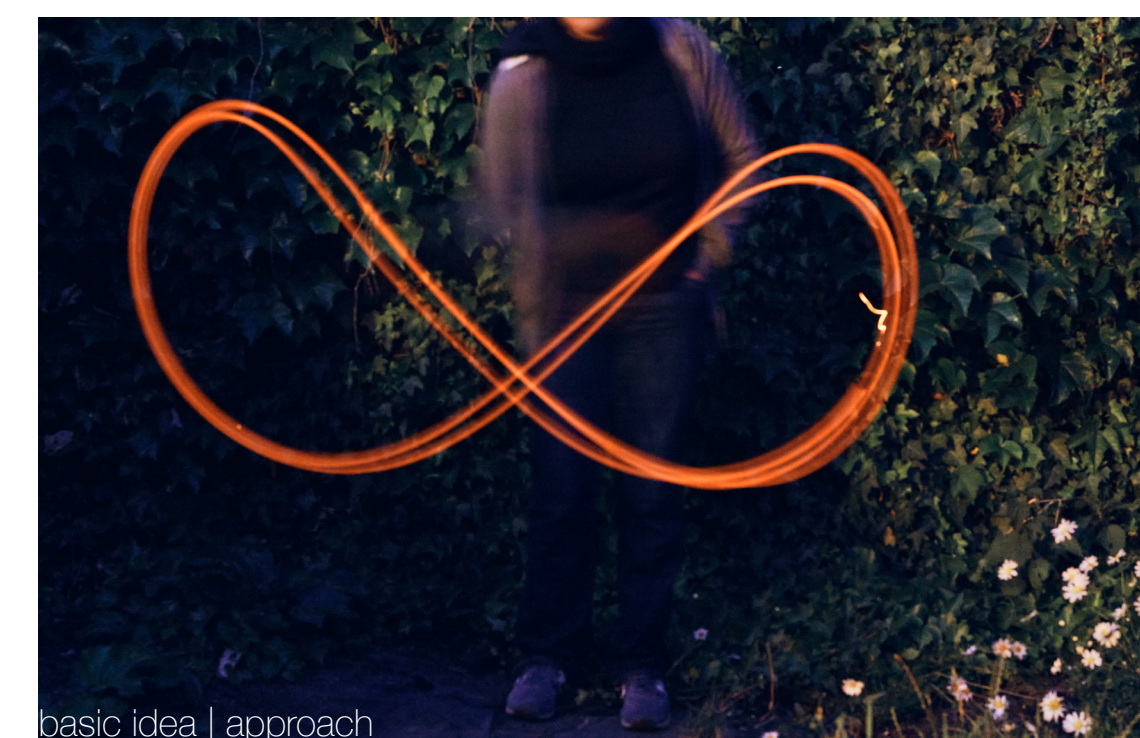


INFINITY GARDEN



Concept Infinitygarden Silicon Valley

This new landmark for San Jose is derived from the symbol of infinity and inspired by its meaning. The symbol stands for the infinite possibilities that have arisen through the technologies and inventions developed at this location. It also stands for the infinite existence of nature and flora due to the "green loop" design. The Infinity Garden is radiated by a laterally integrated luminous band that follows the shape of the infinity loop and thus creates a strong and dynamic eye catching presence even at night.

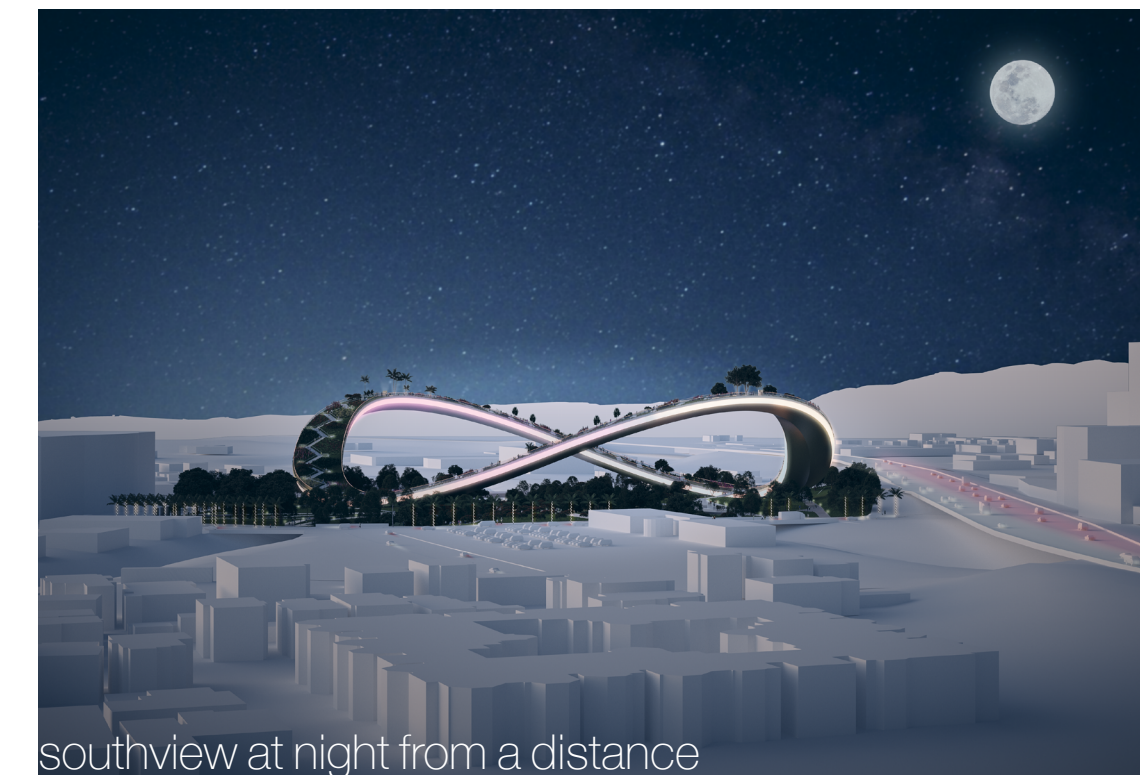
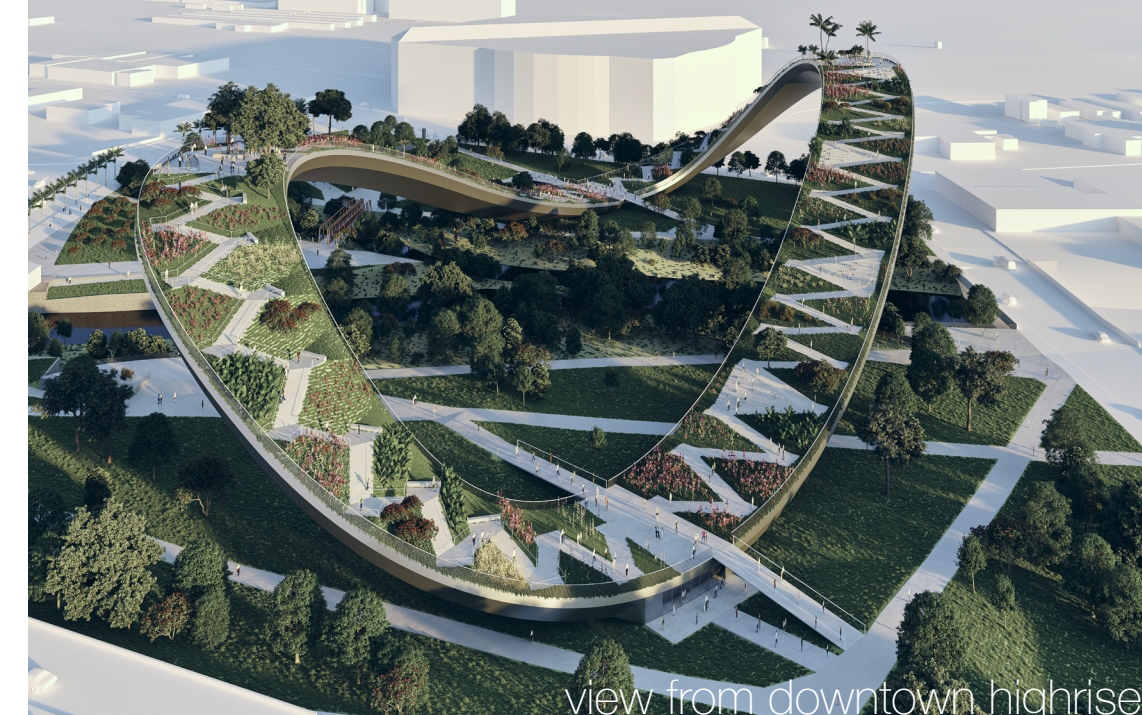


Arena Green Sitemap | Location

The new landmark lies calmly and confidently over the confluence of the two watercourses running through the park. The green band connects the east and west sections of the existing park in both directions. The landmark is given an astonishing presence by the enormous dimensions. The 68ft wide elegantly curved green ribbon extends over a length of 766ft, a width of 378ft and at a height of 160ft or 200ft including the trees located on the upper terraces. The imposed height restrictions, due to the nearby airport are counter balanced by the structure's unique horizontal presence, design and size.

Infinitygarden Concept

The use of the park is optimally expanded by the 68ft wide infinite loop, essentially a park within the park. This expansion of the green areas and public paths within the iconic landmark create new and exciting views of the surroundings. The proposed terraces and paths provide places for visitors to meet. The green zones of the Infinitygarden can be defined and designed in a variety of ways. Inspired by the Hanbury Garden (Liguria, Italy) here a form of "Gardens of the World" could emerge on the endless band, with a sequence of different vegetations along the path. A changing design with native plants, or areas with vine plants to create a connection to the nearby Napa Valley would also be conceivable.

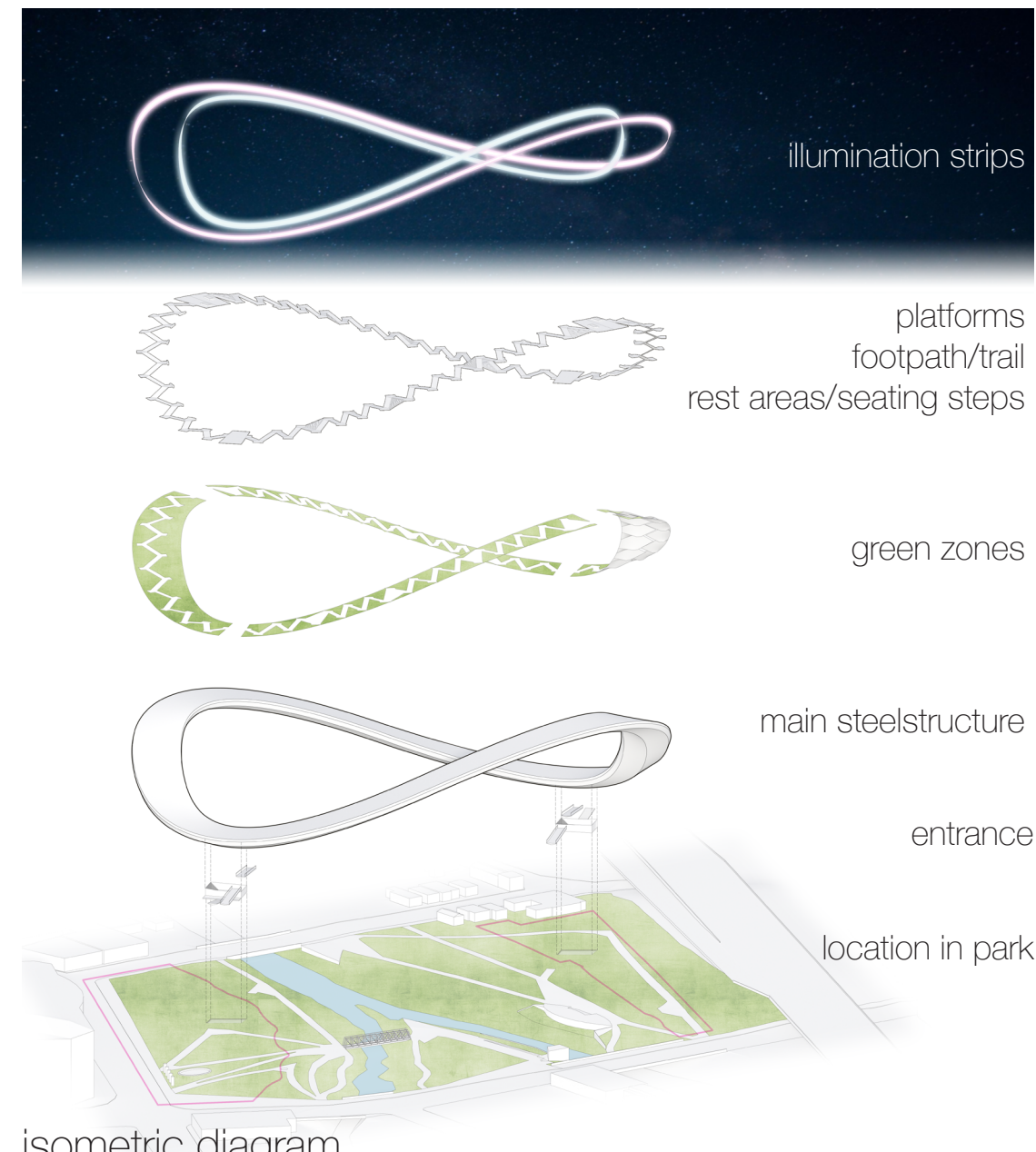
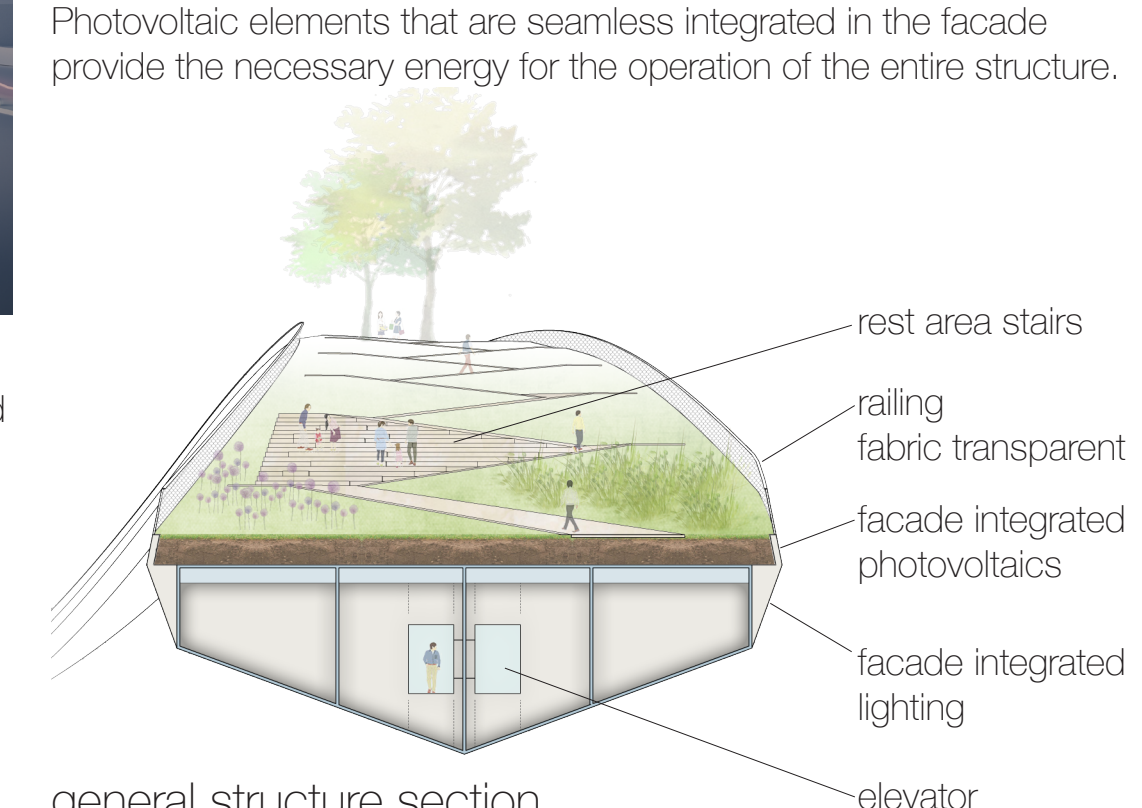


Structure

The main construction of the Infinitygarden is formed by a 68ft wide and 23.8ft high steel structure, which takes on a tapered triangular shape in cross section. The symmetrical loop curved in the form of the infinity symbol has 2 low points and 2 high points. The entire steel structure lies on the 2 lower points on massive reinforced concrete foundations anchored in the ground. The construction spans the park with the curved arch of 2 bridges between these 2 lower points. The exterior cladding of the structure is made of galvanized specially refined steel plates, which softly reflect the surroundings in a blurred manner.

Lighting | Net zero Energy Approach

The curved shape is visible from afar even in the dark thanks to the integrated lighting band on the narrow side surfaces. The approx. 6.5 ft high lighting strip is formed by luminous dots integrated into the outer skin, which emit a soft, calm shimmering light. This light band can reproduce any color and the intensity can be controlled. The entire shape of the infinity symbol shines by itself and achieves an unmistakable long-distance effect at dusk and at night without emitting unpleasant blinding effects or light pollution in the environment. Photovoltaic elements that are seamlessly integrated in the facade provide the necessary energy for the operation of the entire structure.





	<p>Green Zones Lush vegetation from all corners of the earth line the 10ft wide trail along the infinity loop. In addition to this, the path can also be accompanied by various exhibitions, artistic objects or scientific explanations, thereby creating a learning or adventure path for the public.</p>		<p>Public Trail The meandering path winds through the various green areas and connects the public terraces on the structure.</p>		<p>Stairs and Rest Areas At regular intervals there are various seating options in the form of seating steps and benches along the infinite path.</p>		<p>Illumination The light band arranged on the side appears in varying colors and brightness. As a suggestion, it reacts to various events, e.g. rain = blue light.</p>	<p>Restaurant/Exhibition Below the upper terraces there is space for various uses inside the structure. A restaurant or bar could be conceivable here, or rooms for exhibitions.</p>	
--	--	--	---	--	--	--	--	---	--

