

The Hanging Gardens of San Jose

A SIMPHONY OF COLORS AND AROMAS IN CONSTANT EVOLUTION THROUGHOUT THE SEASONS

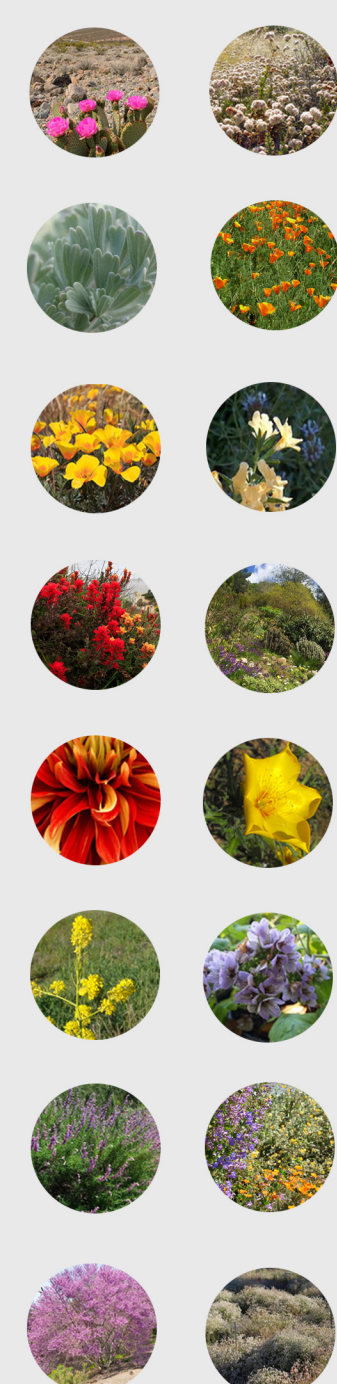
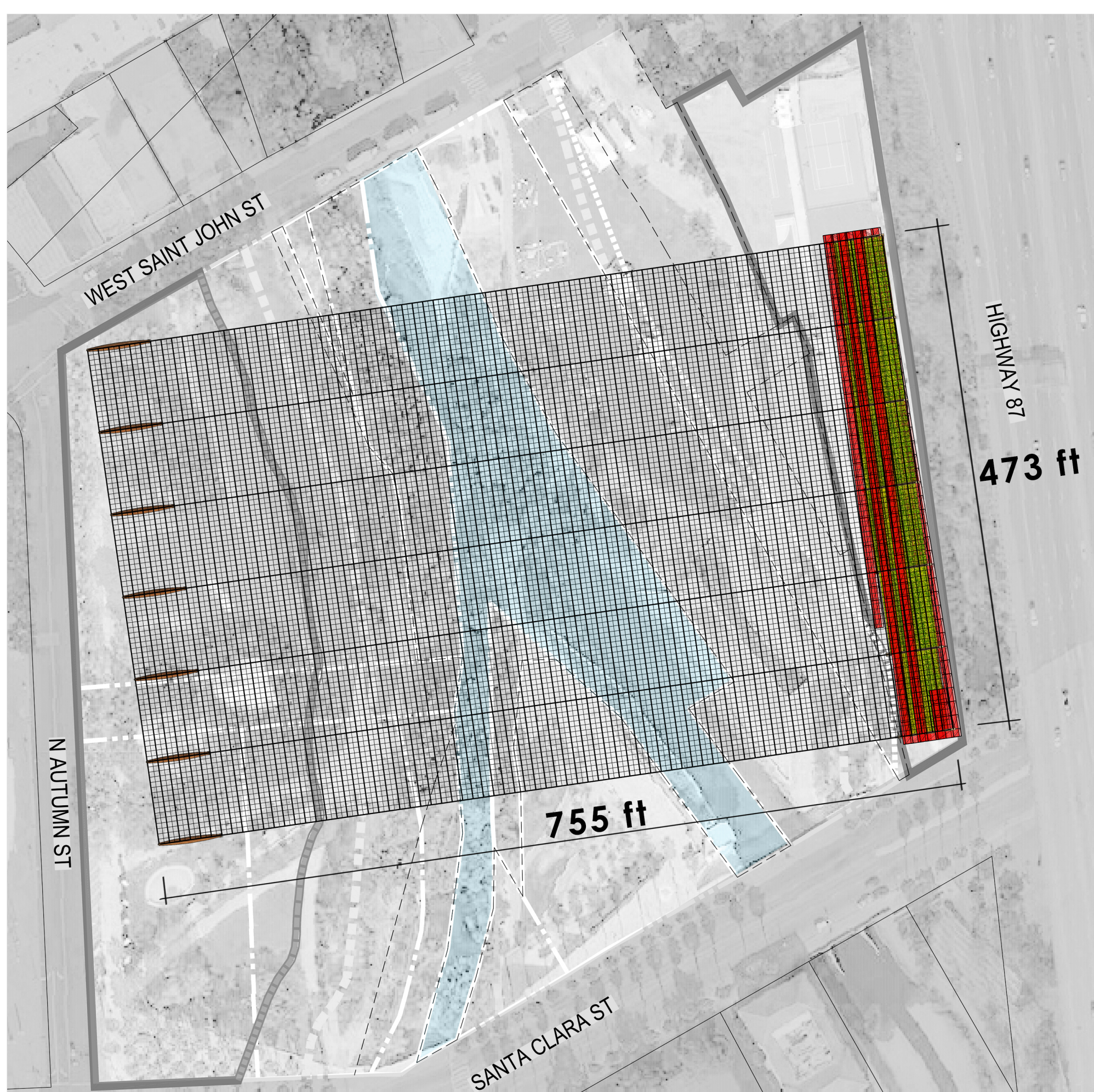
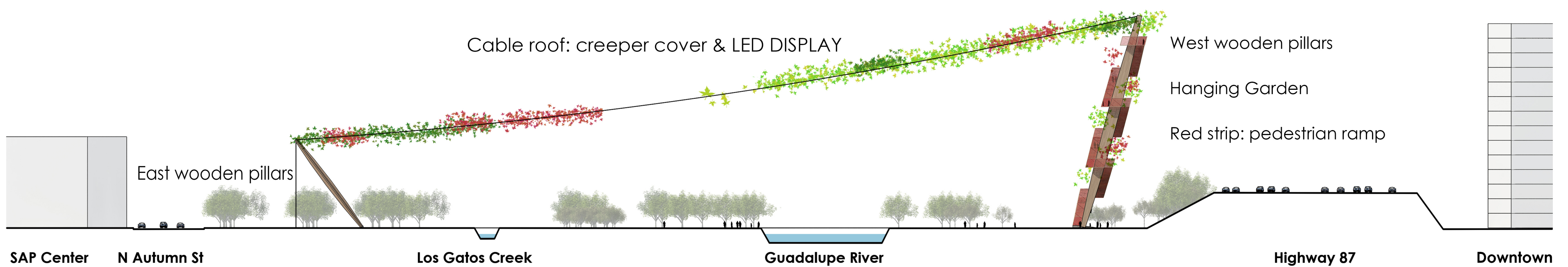


-A milestone driving the **IMAGE** of **SAN JOSE**, to the world, from the **UNIQUE CHARACTER OF THE LOCAL AND NATIVE FLORA**

-Duplicating the green surface of the park, and providing a **MORE COMFORTABLE, SHADY, COOL** and **QUIET ENVIROMENT**

-**PEDESTRIAN RAMP** to see the hanging gardens up close, going up to 180 ft above the park with **360° PANORAMIC VIEWS** over the cityscape

-Net-zero energy design: systematic use of **LAMINATED WOOD** from **SUSTAINABLE** local plantations, for the construction

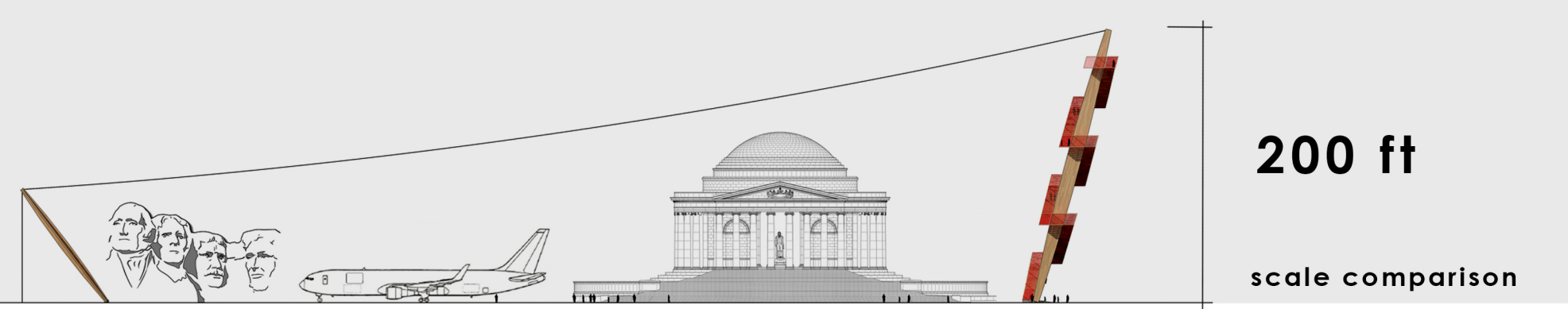


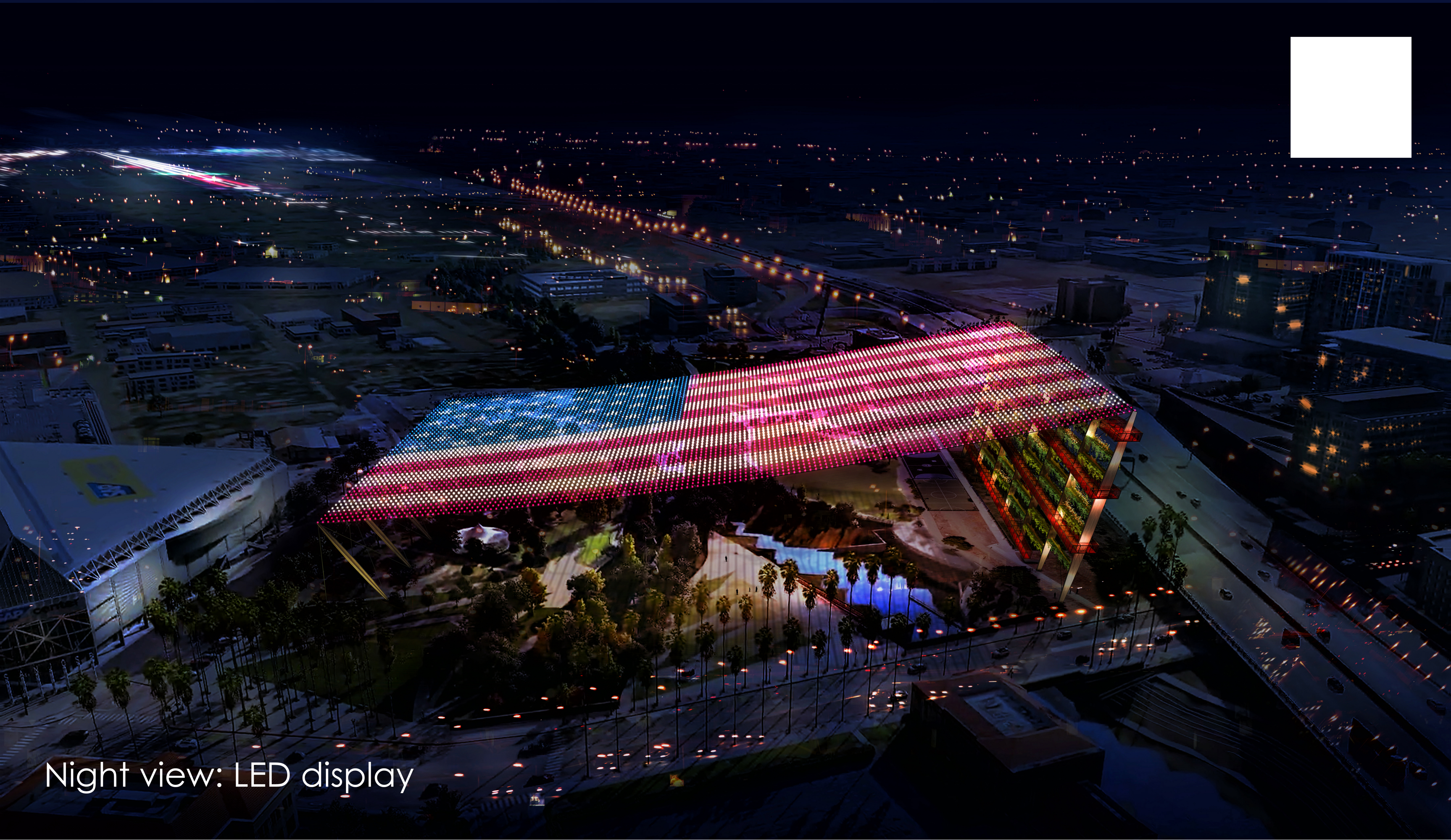
A California garden ,displaying native and drought tolerant plants, offers economic, ecological and social benefits:

- ABSORBS 100 Tons of CO2 per year
- GENERATES 72 Tons of O2 per year
- absorbs highway noise by 50% (8dB)

- water-conserving plants of lower water needs
- reduced maintenance requirements
- reduces the ambient temperature
- promotes urban biodiversity, attracting birds, bees and butterflies

- beauty of blending in with the natural landscapes
- makes people happier in a green enviroment



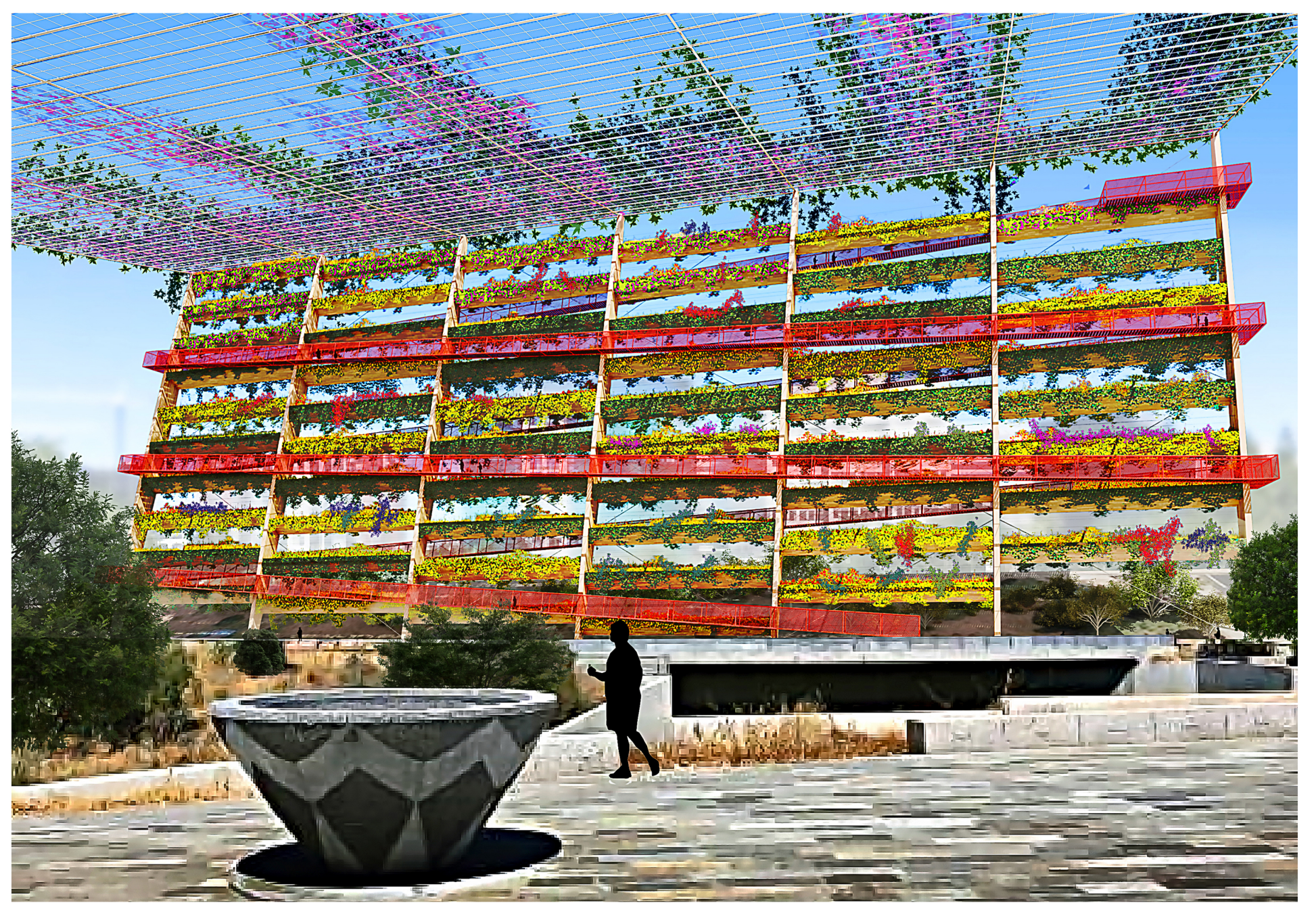


Night view: LED display

-SPECTACULAR NIGHT LIGHTING: 755 ft x 473 ft LED SCREEN, displaying moving images and texts, visible from a great distance



View from the pedestrian ramp, watching the hanging gardens and the surroundings



View of the hanging garden from the park

View from the highway

