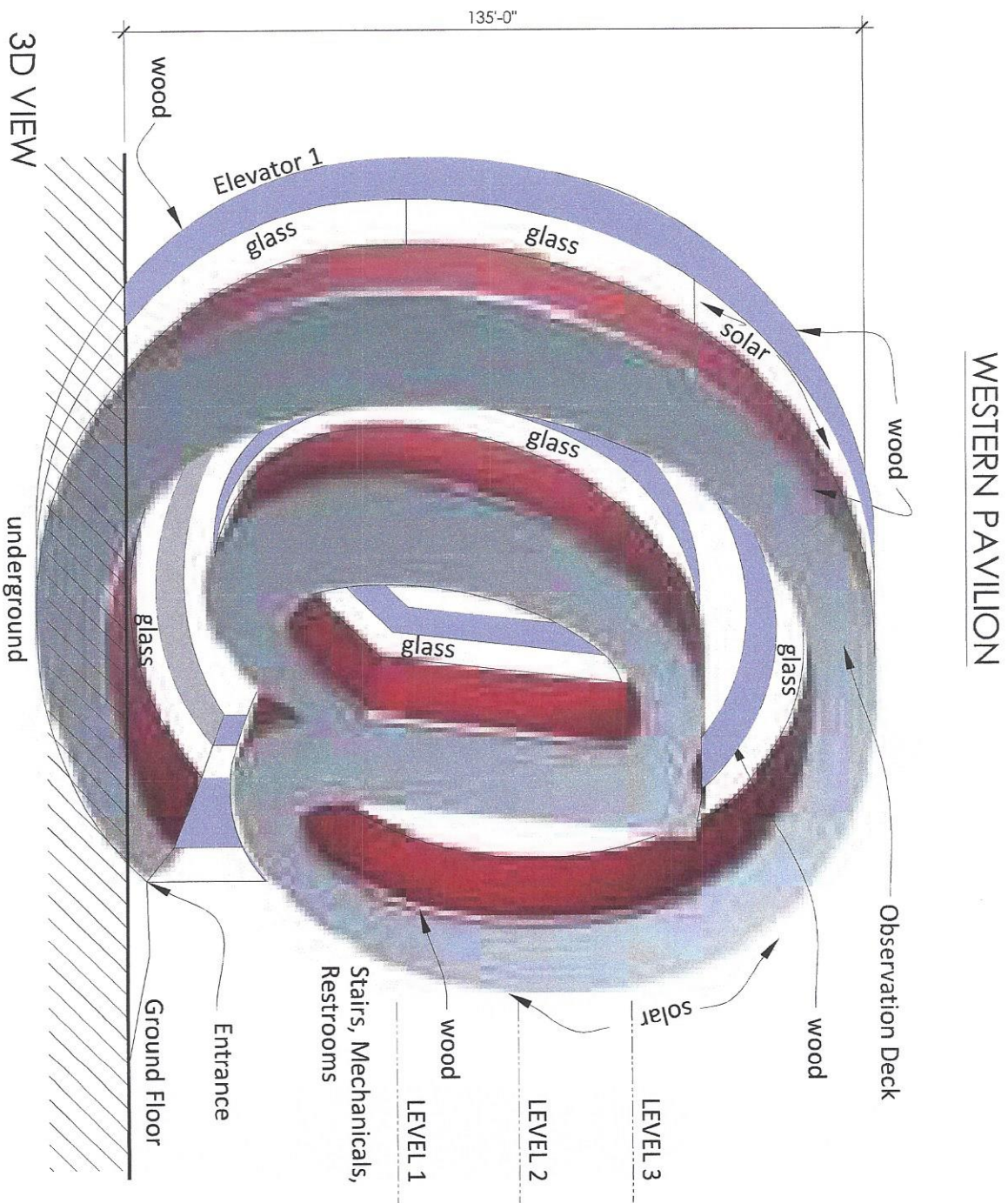


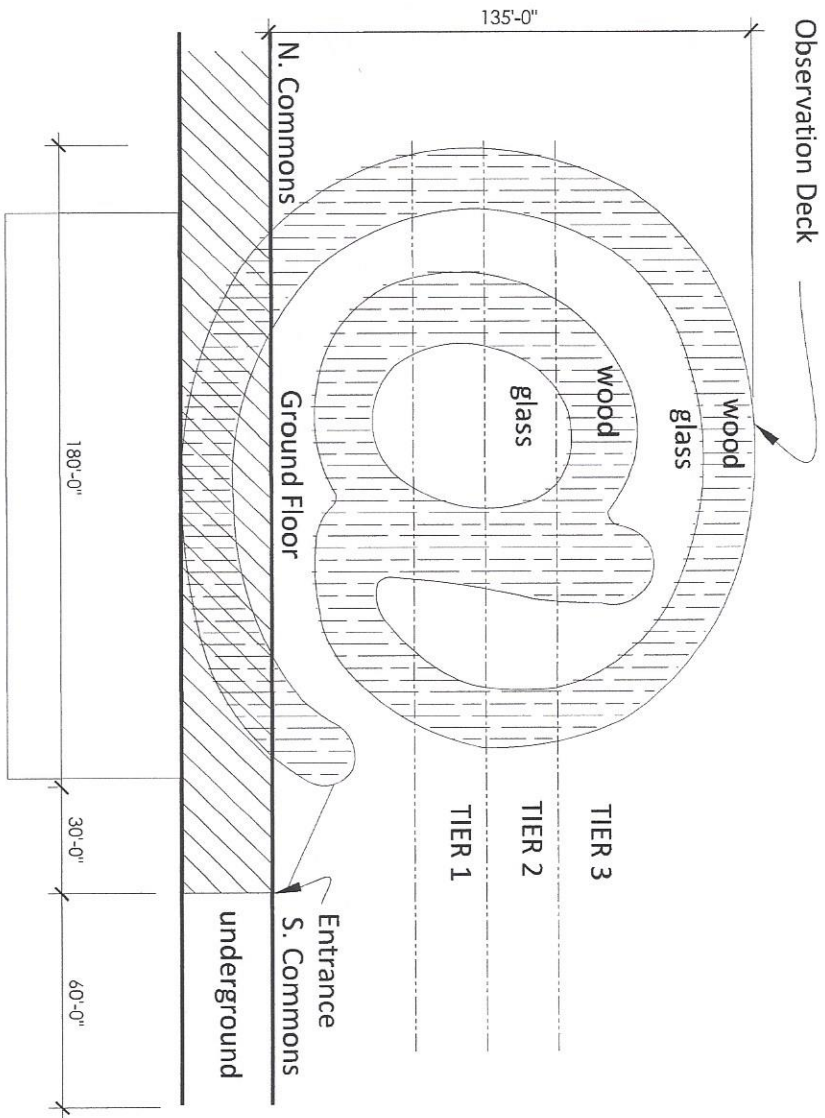


SITE PLAN

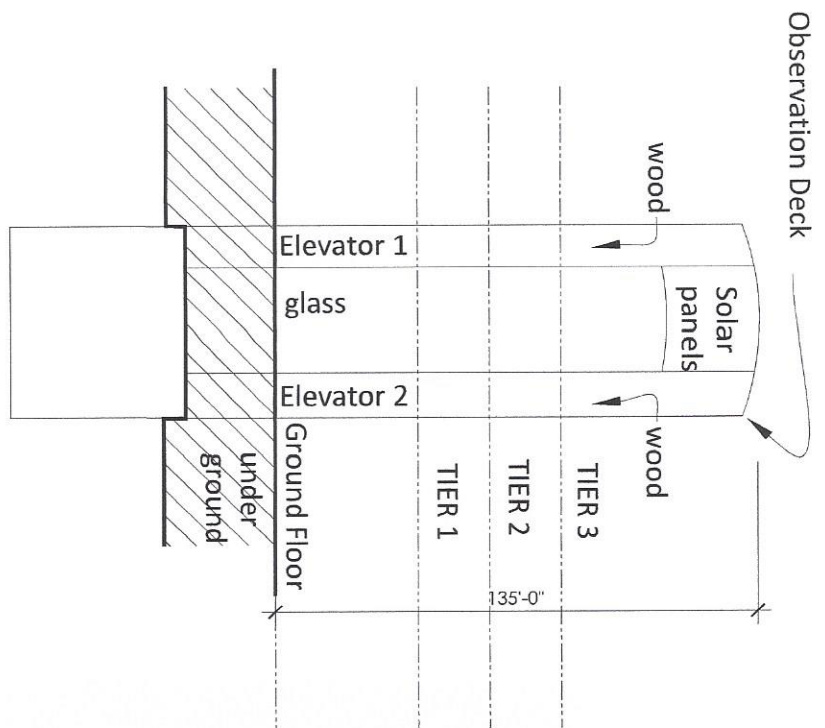
Notes:

- Ground Floor and Facilities
- 3 Floor levels
- Observation Deck
- 2 Elevators on the left structure
- Glass and wood sides and framing
- Exhibition space
- Classic Illumination of the exterior solar panels
- 1/4 left side, 1/2 right side





FRONT VIEW



LEFT VIEW

