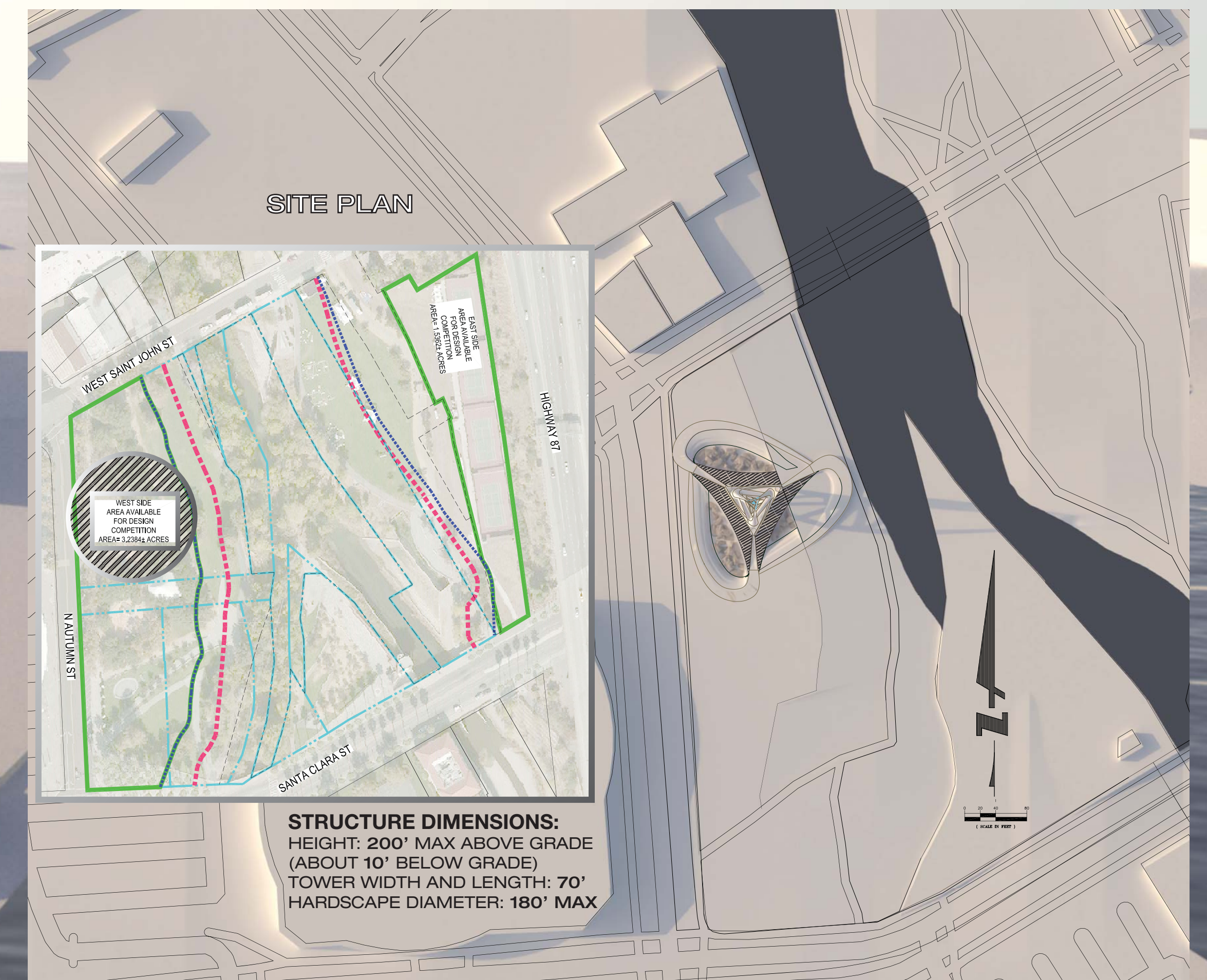
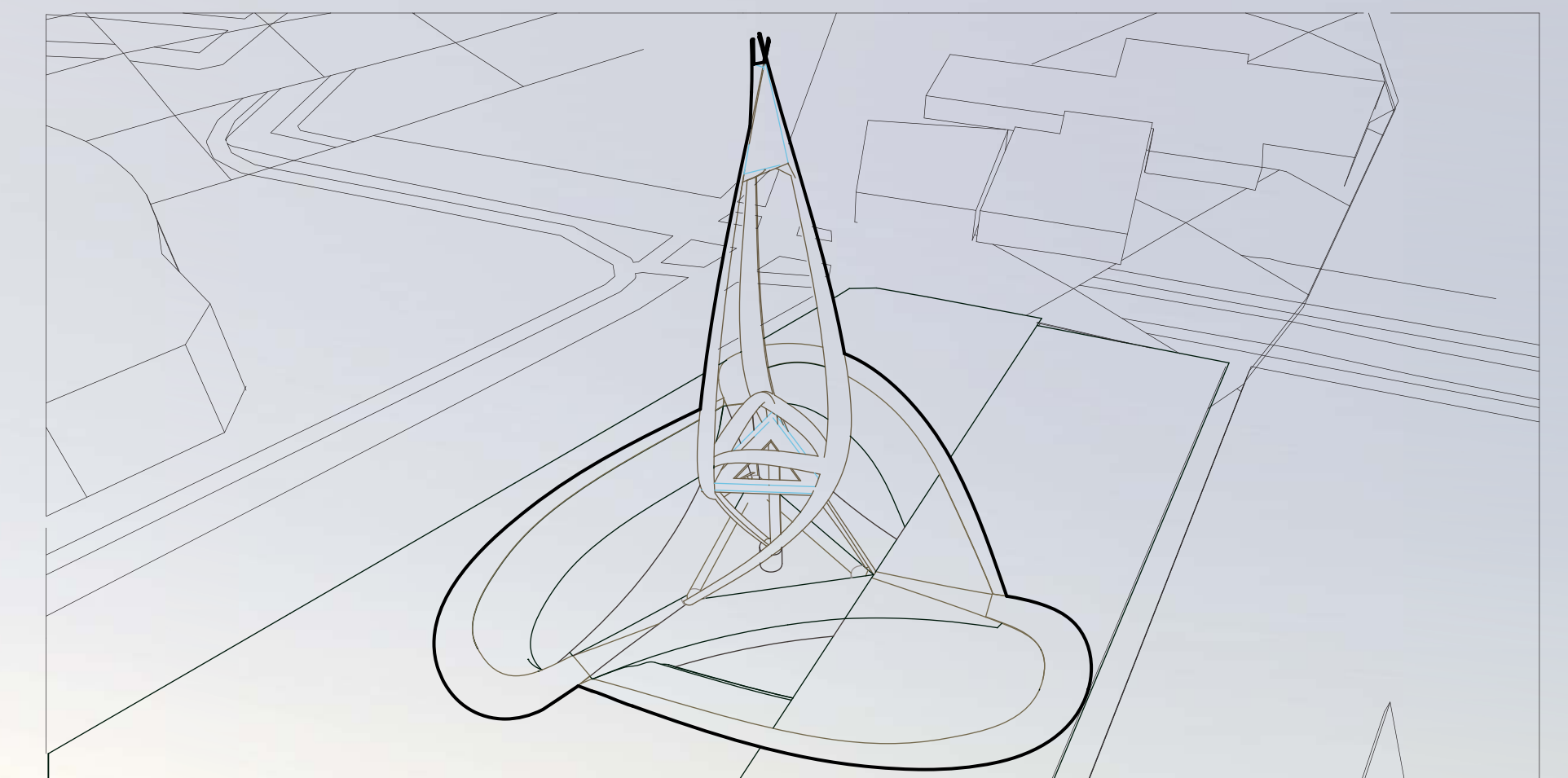
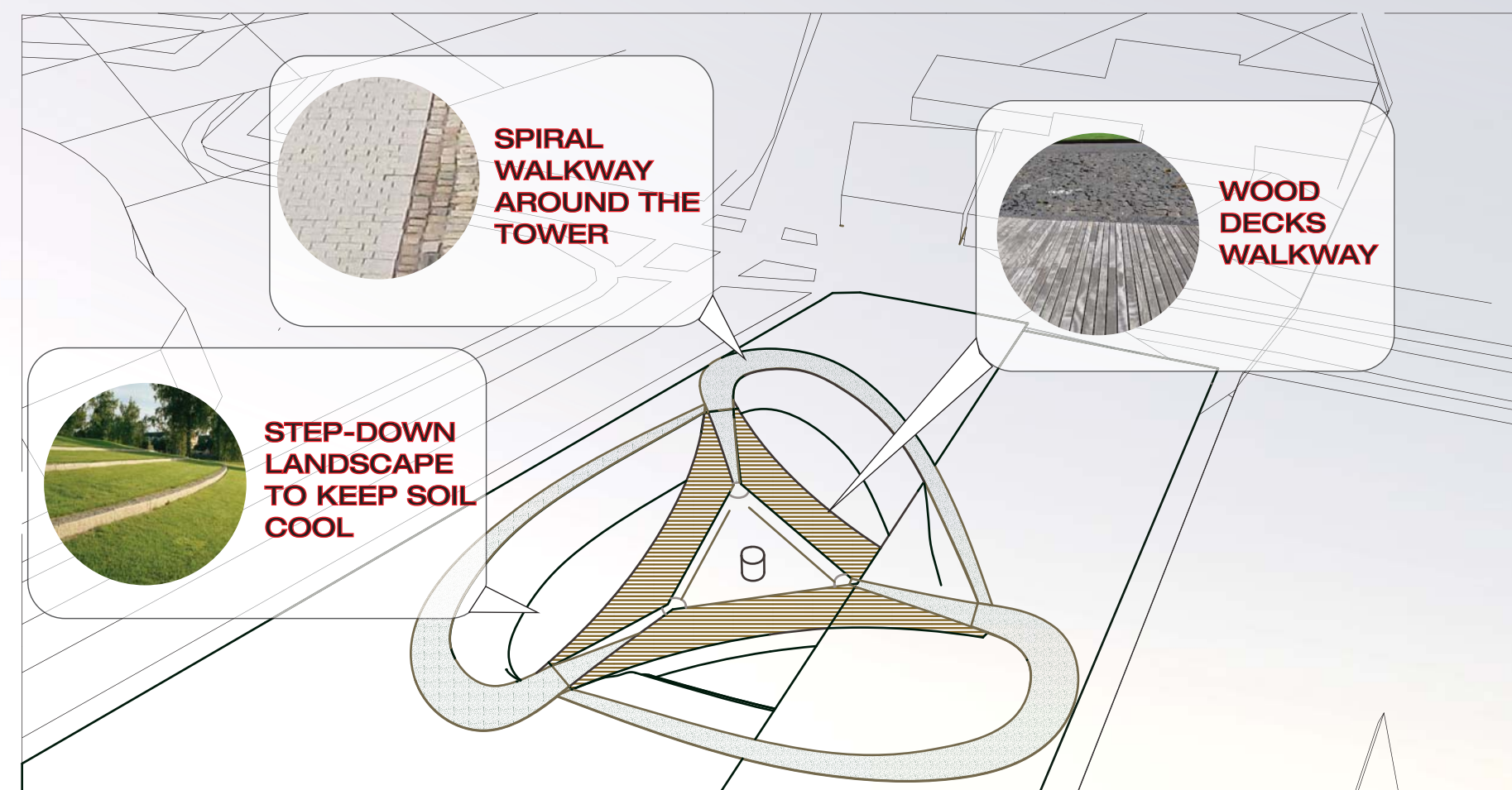
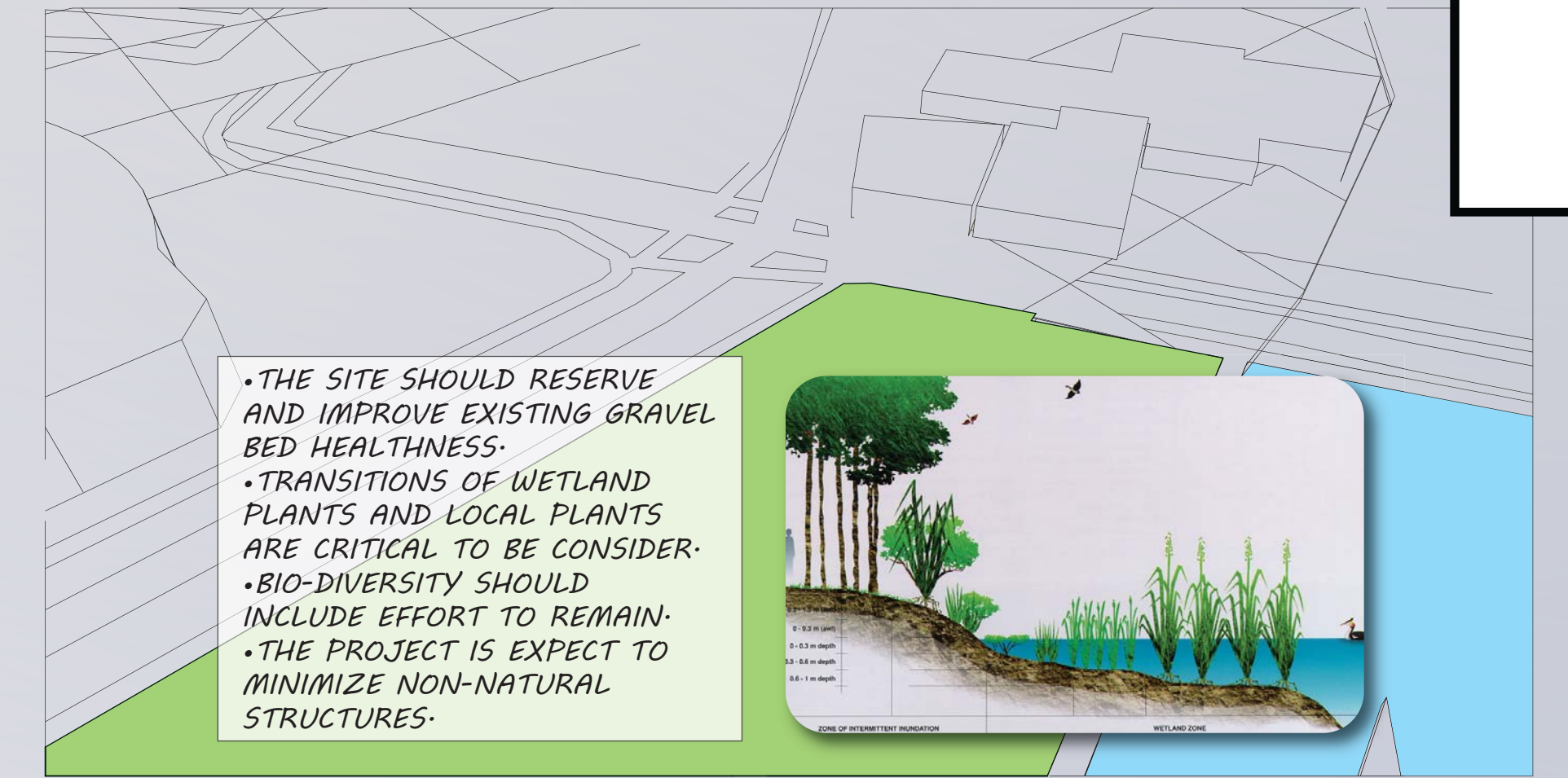
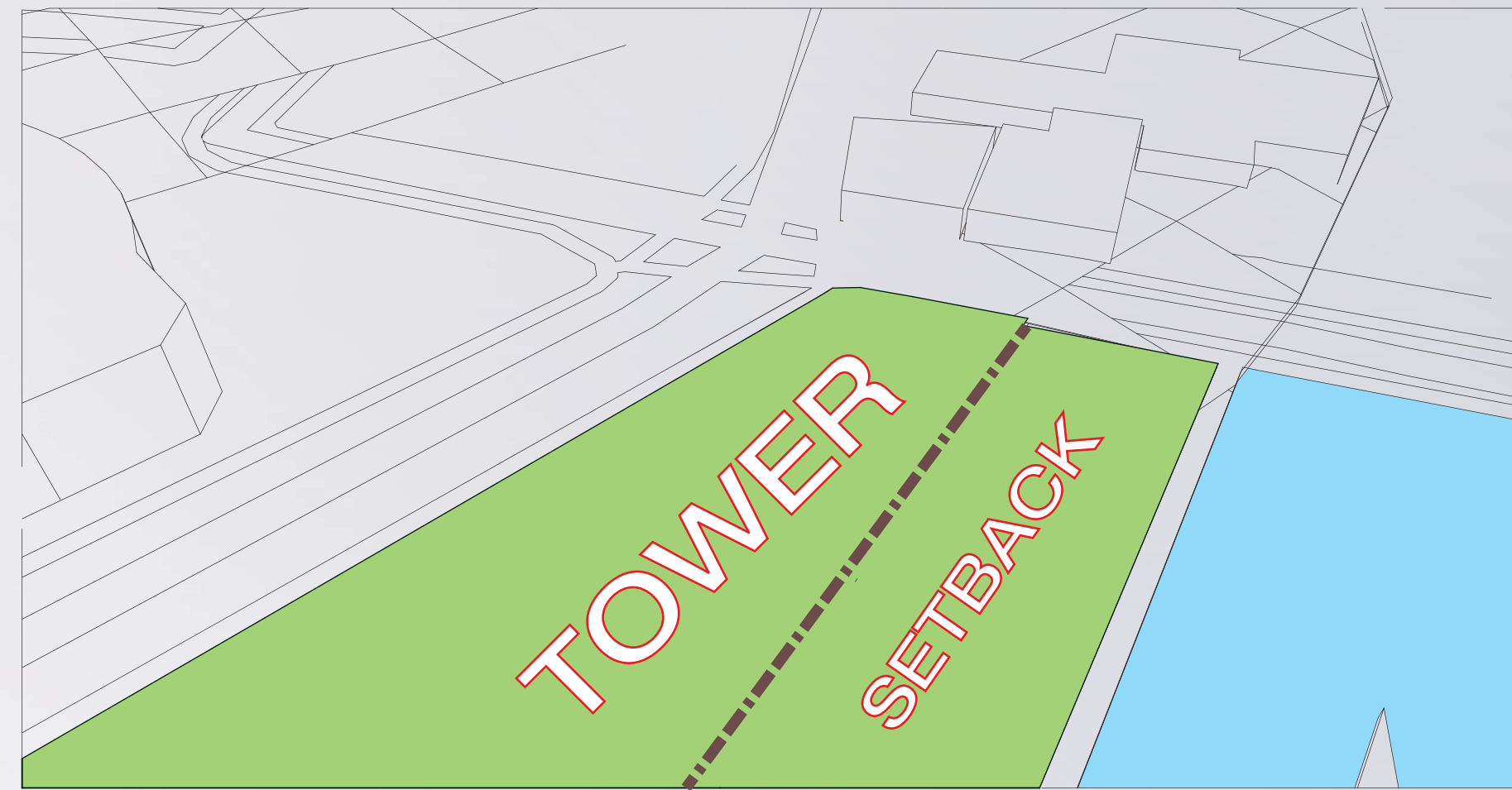
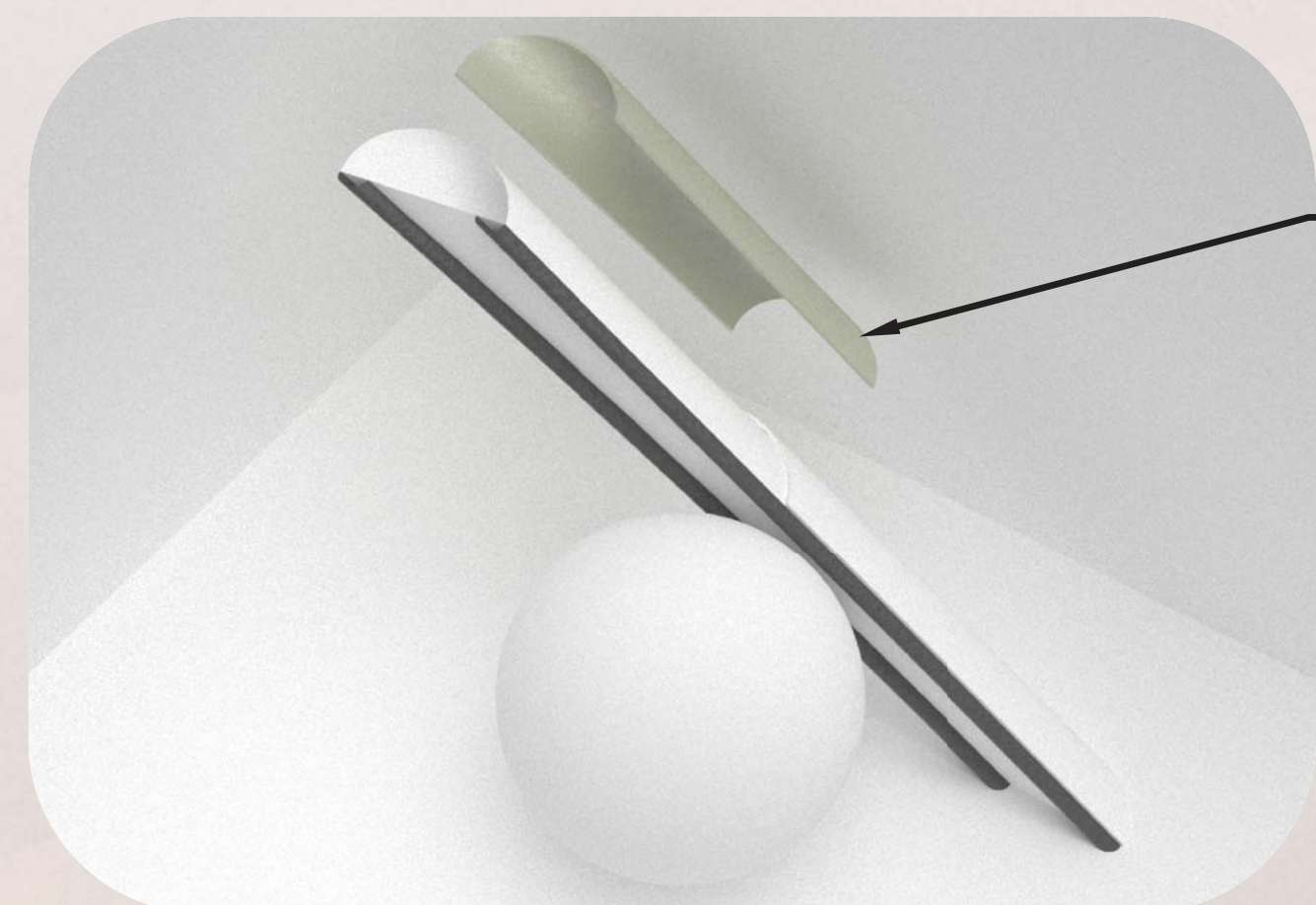


# FREEHAND SPIRAL LIGHT TOWER





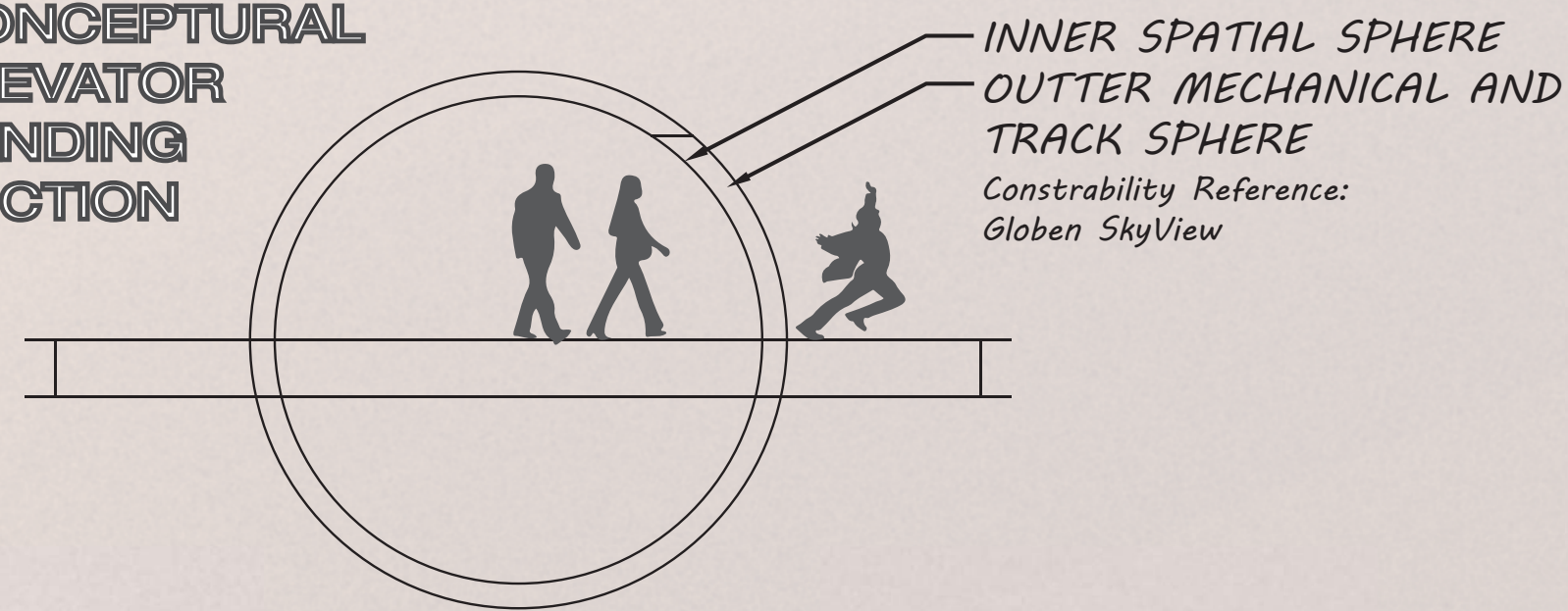


'STARRY NIGHT' PANEL over STEEL SUPERSTRUCTURE

Fiber LED Light Embedded into Roman Concrete Panel to Pursue a Low Lumen at Night, Lower Thermal Conductivity, and Protection from Moisture (Solar and Alternation should Depend upon Energy Consumption and Structural Efficiency).

VERTICAL/VECTORIAL CIRCULATION

CONCEPTUAL ELEVATOR LANDING SECTION



INNER SPATIAL SPHERE  
OUTTER MECHANICAL AND TRACK SPHERE  
Constrability Reference: Globen SkyView

Allowable Height / 200 Feet  
Height Variation Must Fit Spiral Widths Proportionally

Freehand Deck 170 Feet

This will rely on final structural design to determine what height and how this can seat and what occupancy numbers can be allowed. Central piece is a lighting installation that selected Artist will design in each season/year.

Secondary or Tensile Structures may be added as needed

Observation Deck 50 Feet

Any space may program for beta design/project/idea exhibitions to encourage interaction from professional, academia, and the public.

Ground Stairs

Elevator Entry  
Permeable Pavers (To be Included: Bioswale and Rain Collection)

SECTION

