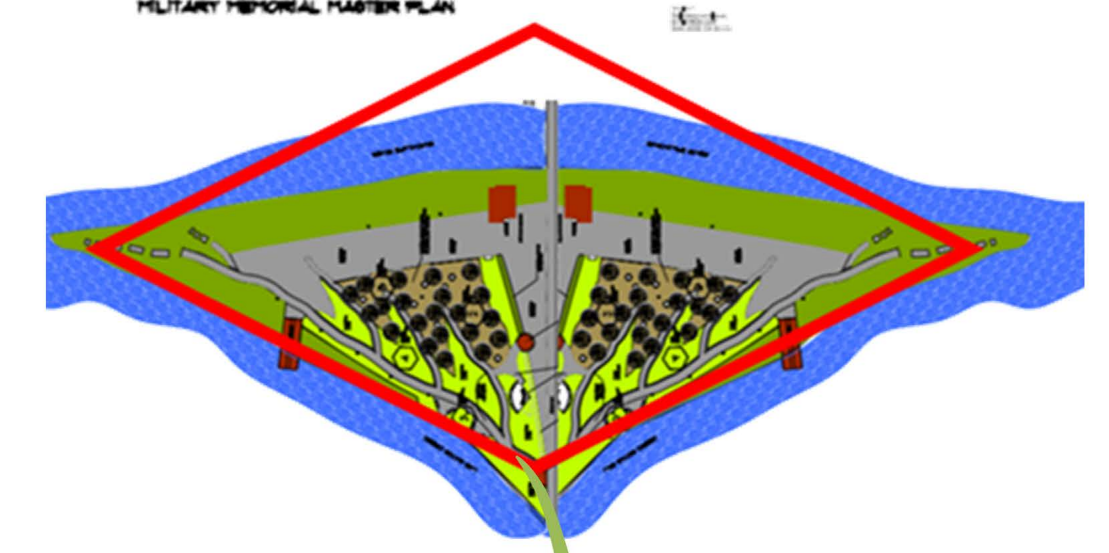


LEGEND

- PARCEL LINE
- S.C.V.W.D. SLOPE STABILITY SETBACK LINE
- BOX CULVERT
- CULVERT INLET
- OWNED IN FEE BY S.C.V.W.D.
- 100' RIPARIAN SETBACK PER CITY COUNCIL POLICY 6-34
- AREA AVAILABLE FOR

The design idea is to use the confluence configuration of the two rivers in a "Y" shape, as well as the triangular shape of the Military Memorial, to create a diamond or diamond shape to represent each man in the Military Memorial.

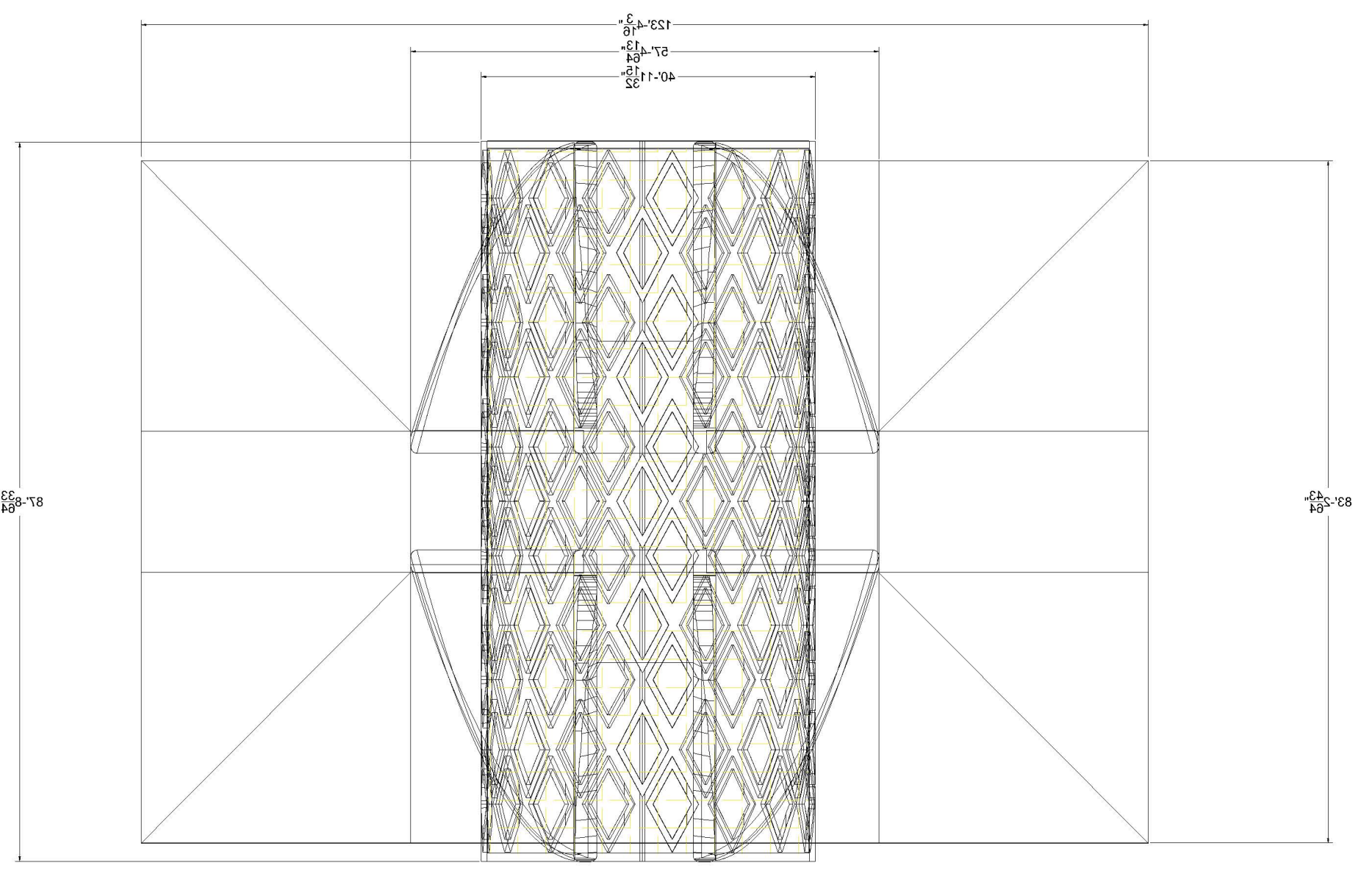
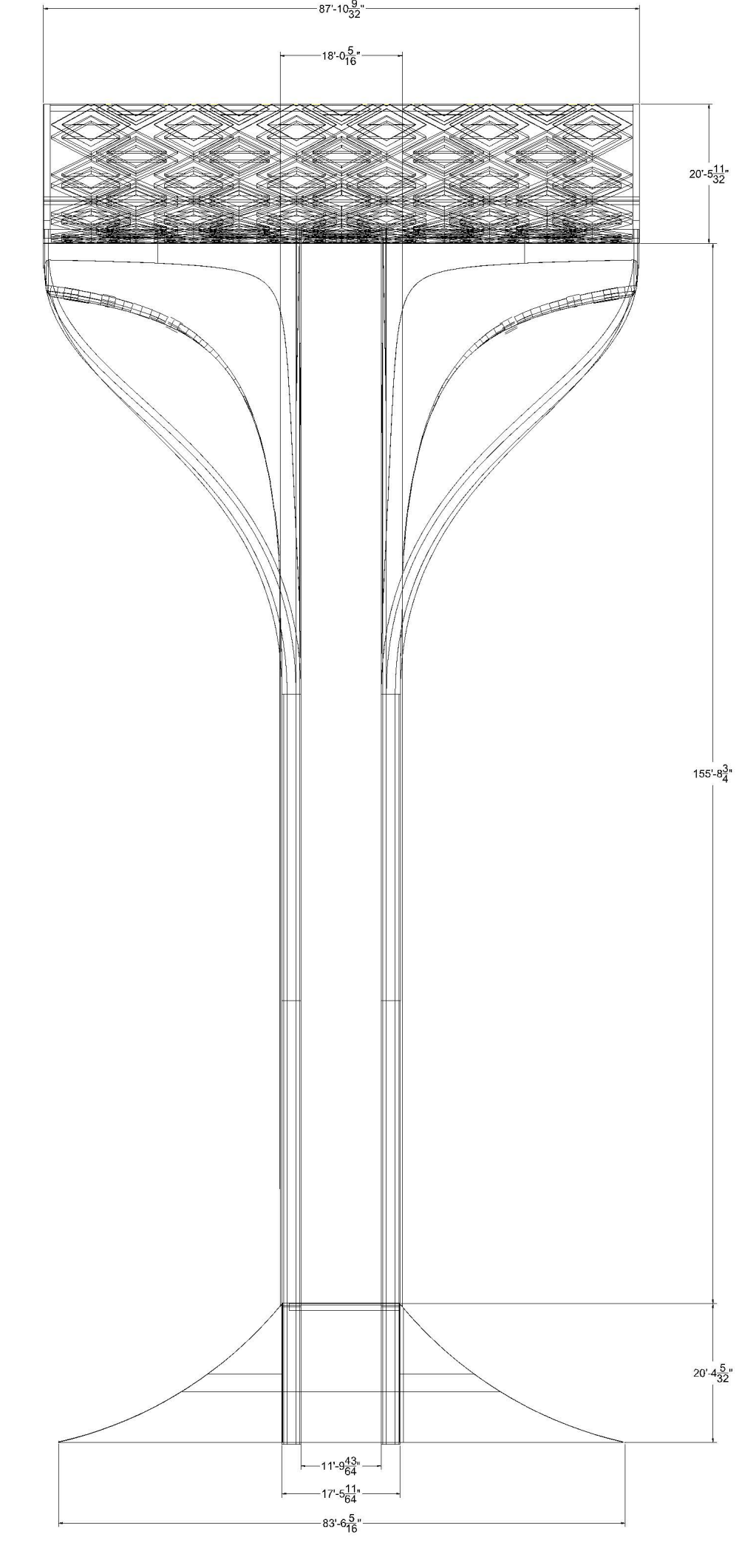
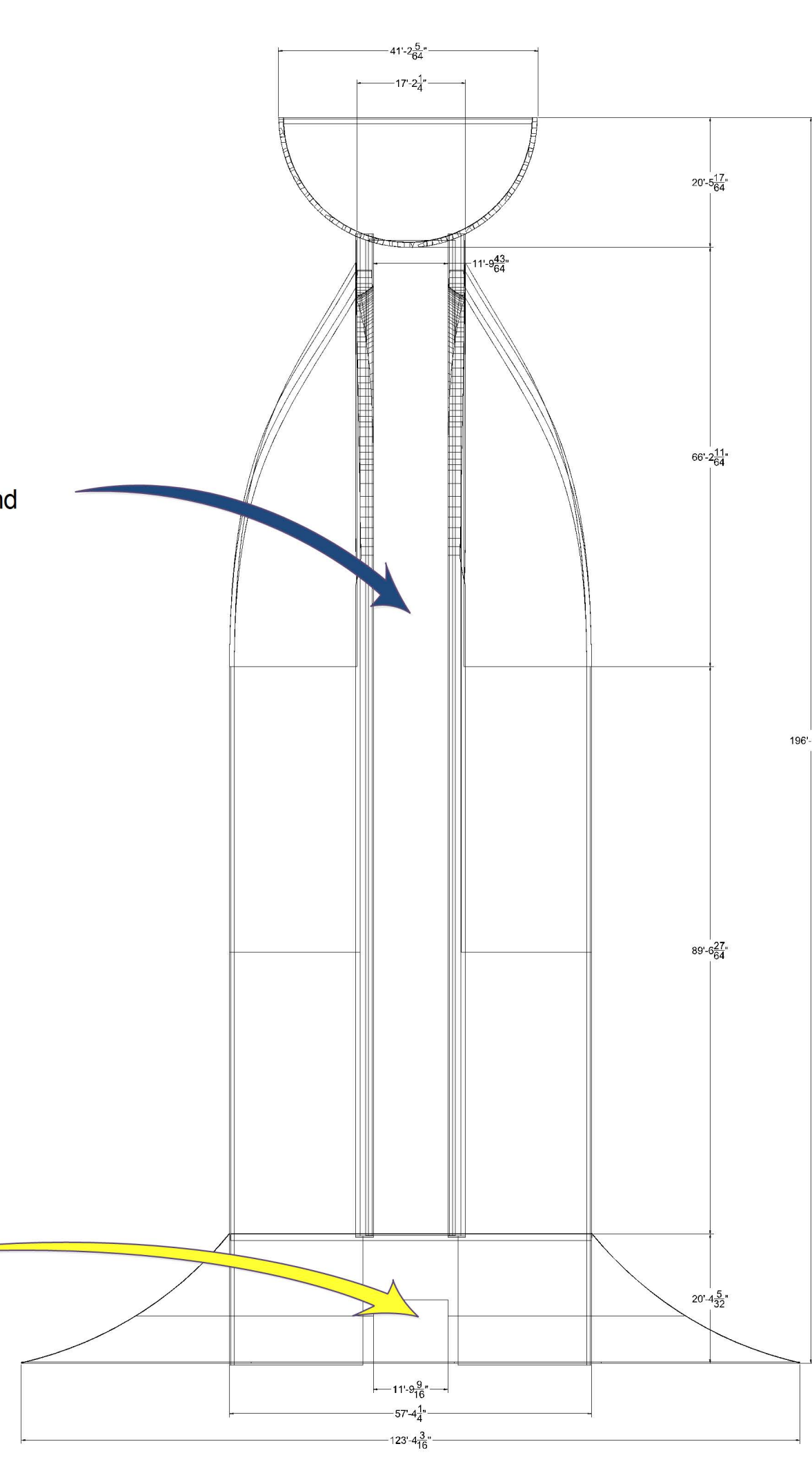
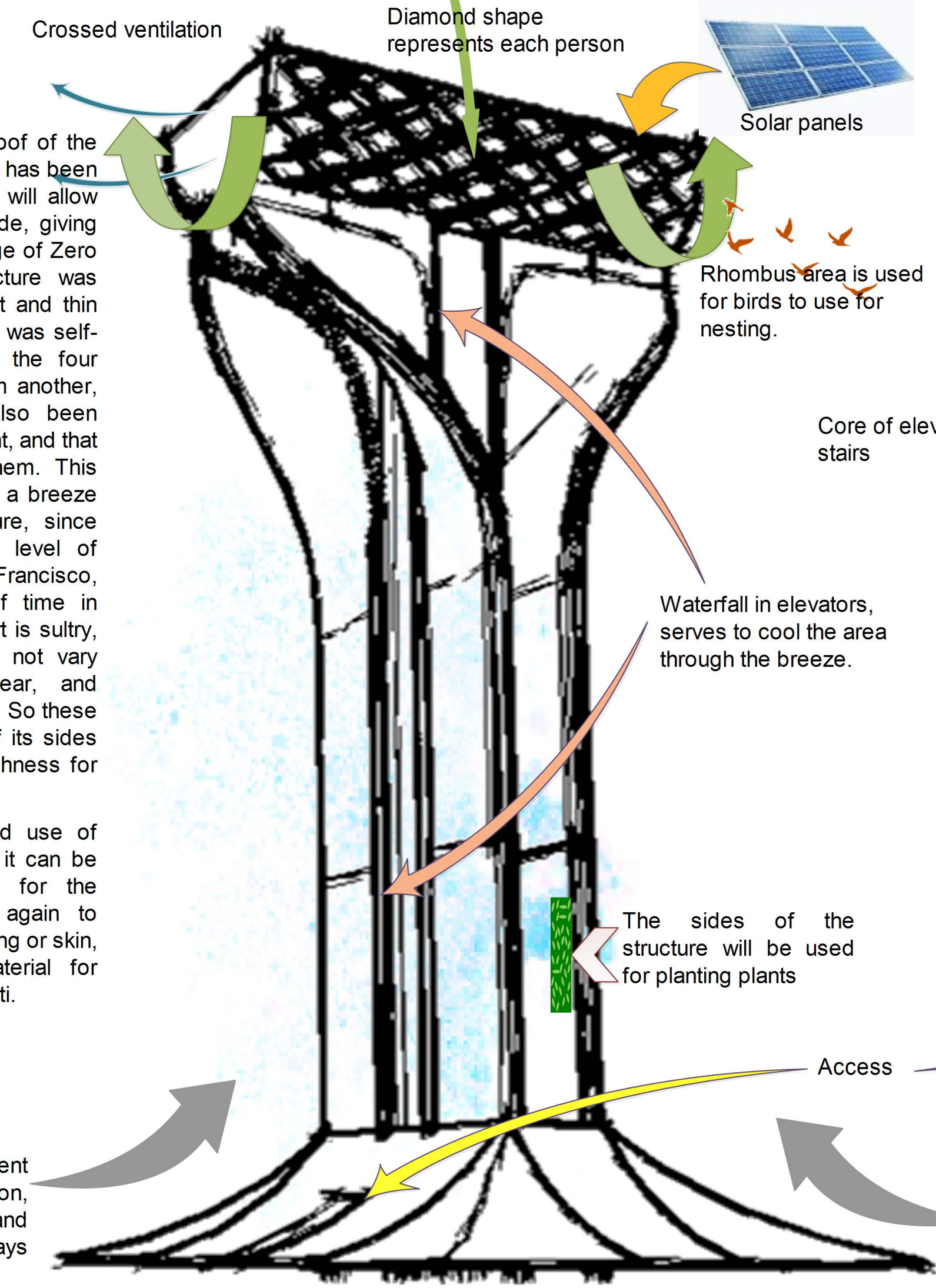
The half cylinder which is a cafeteria, has cross ventilation. It is proposed that the outer part of the rhombuses serve as an area for nesting birds.



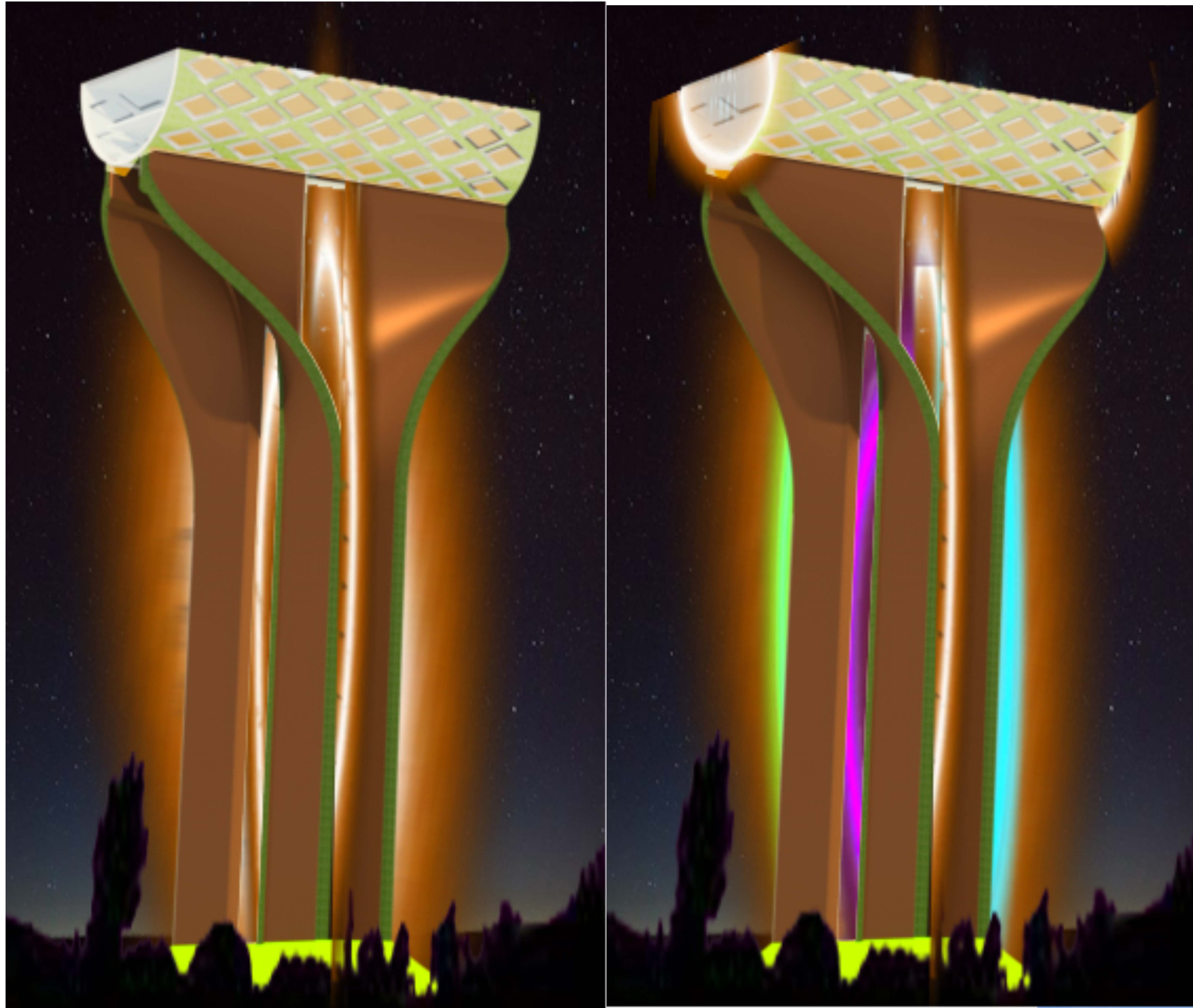
Zero Energy.

The use of solar panels on the roof of the cafeteria, which is the highest part, has been considered, this energy obtained will allow them to light up inside and outside, giving different shades. To take advantage of Zero energy, the shape of the structure was considered, with four independent and thin elements, so that the temperature was self-regulating. This allows each of the four elements to not receive heat from another, since the use of water has also been considered as something important, and that it circulates between each of them. This allows taking advantage to create a breeze on the perimeter of the structure, since according to data obtained the level of humidity perceived in San Francisco, measured by the percentage of time in which the level of humidity comfort is sultry, oppressive or unbearable, does not vary considerably throughout the year, and remains practically constant at 0%. So these four waterfalls located on each of its sides allow a level of humidity and freshness for the visitor.

A mixed structure, concrete, and use of steel profiles is proposed, since it can be recycled material that is used for the structure, and take advantage again to recycle all waste. For the outer lining or skin, it has been considered a material for maintenance and attacks with graffiti.



Concepts that represent Silicone Valley: elevation, always upwards, and openness, always presenting the best.



The Valley Silicone icon has monochromatic lighting, or a combination of colors, in the water column, and it will have movement according to how the water drains.

During the day you will have a view of a waterfall, which will refresh the surrounding environment.