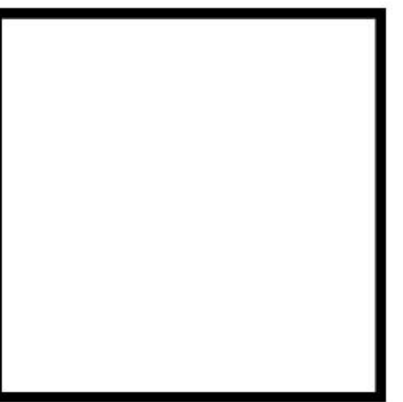
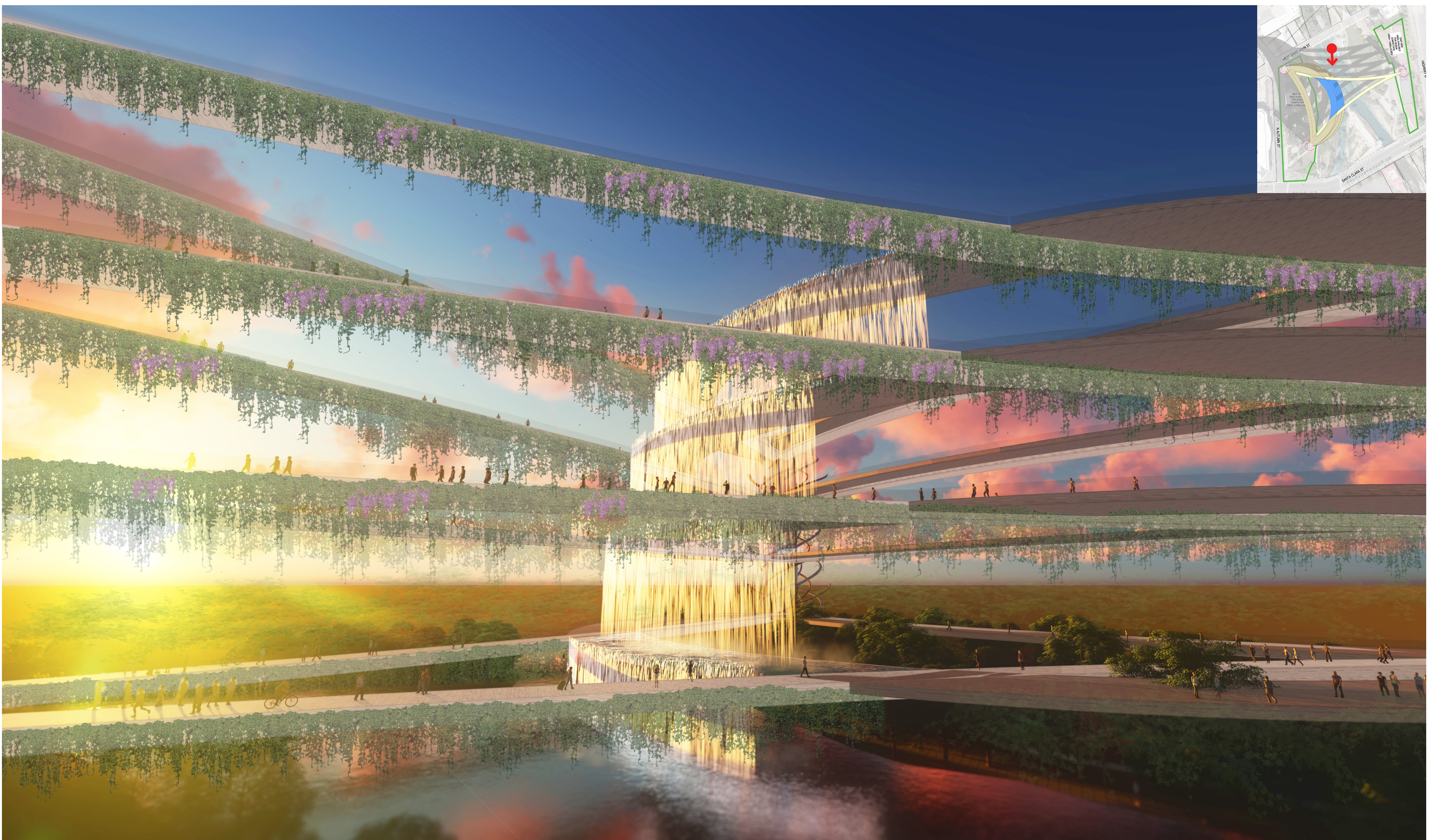
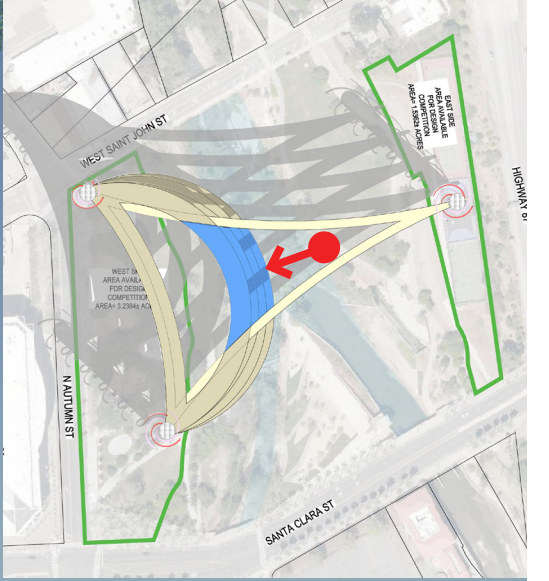
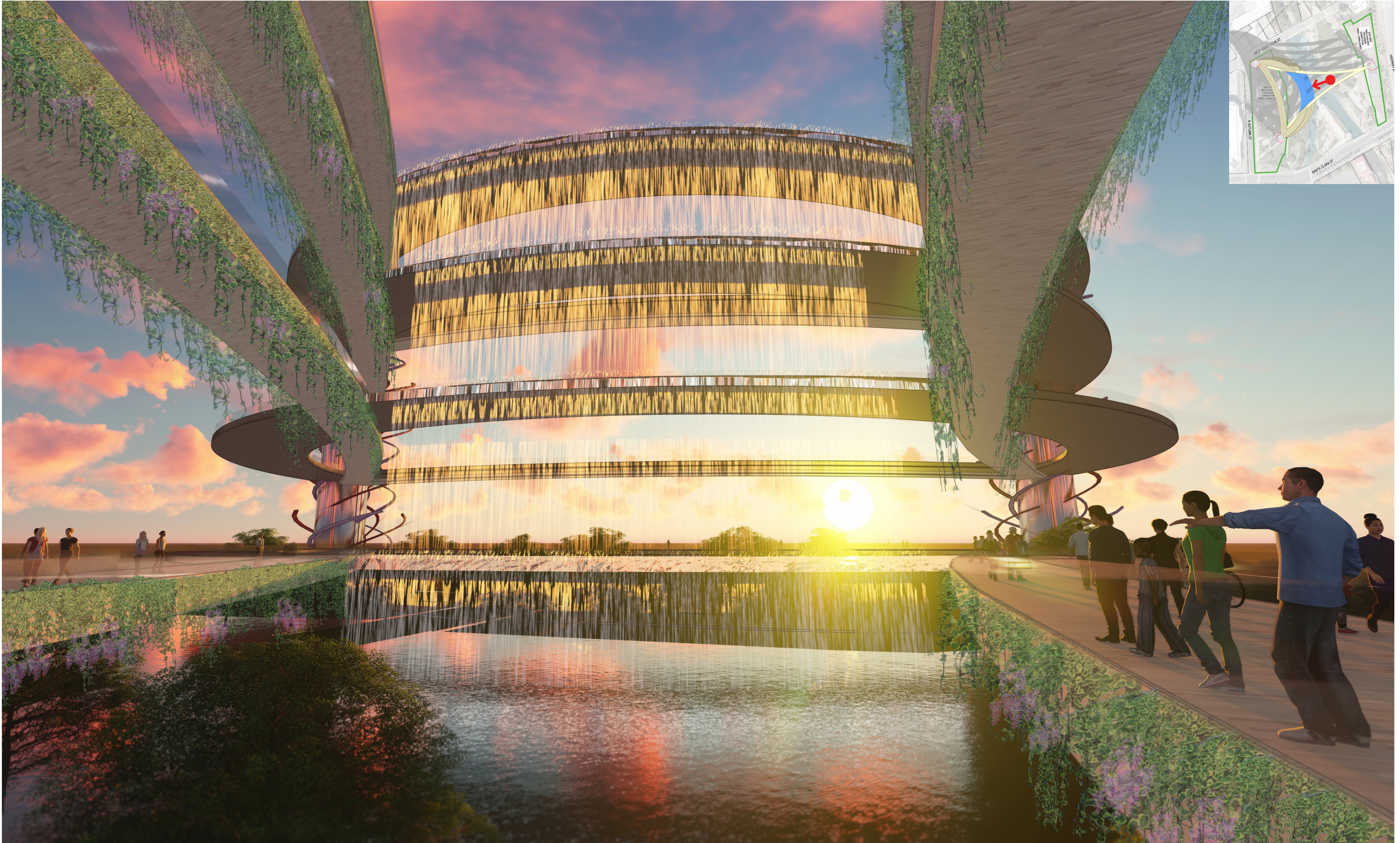


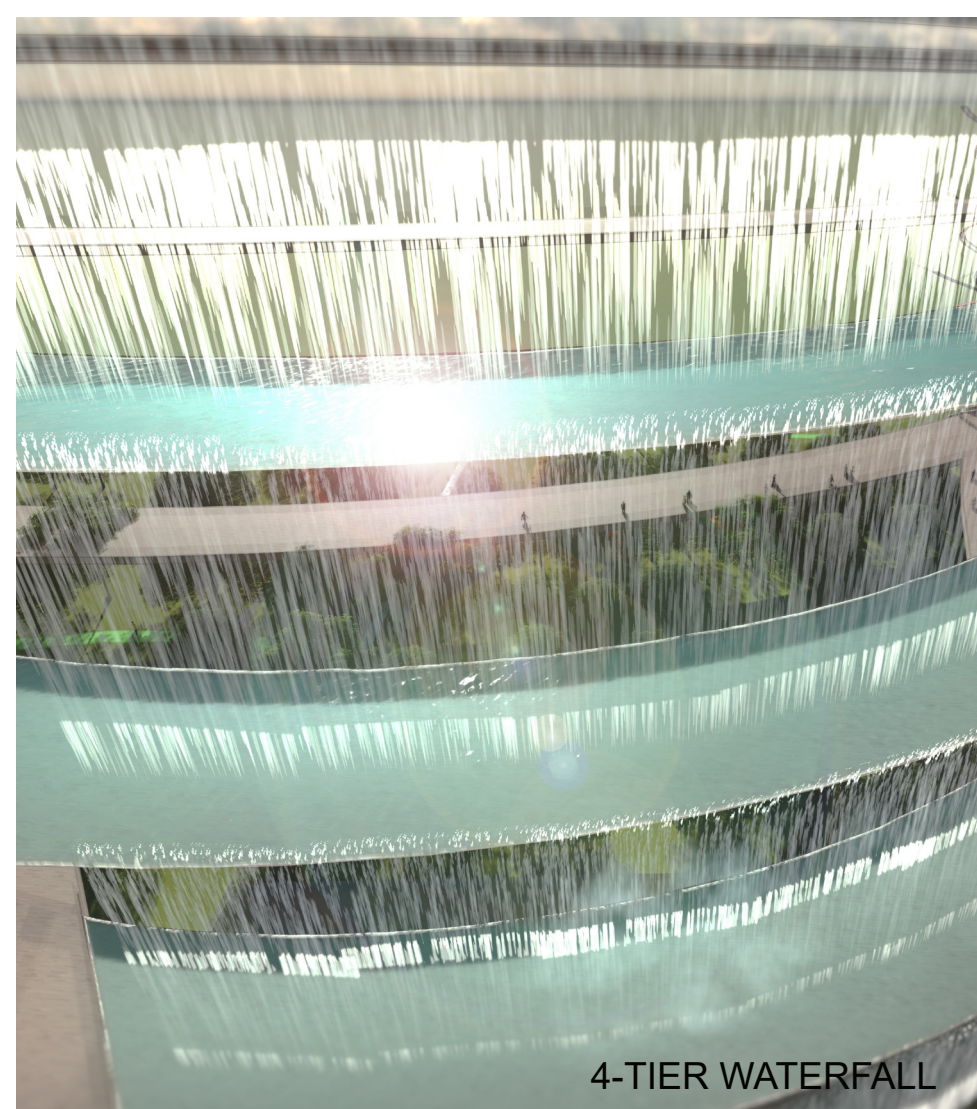
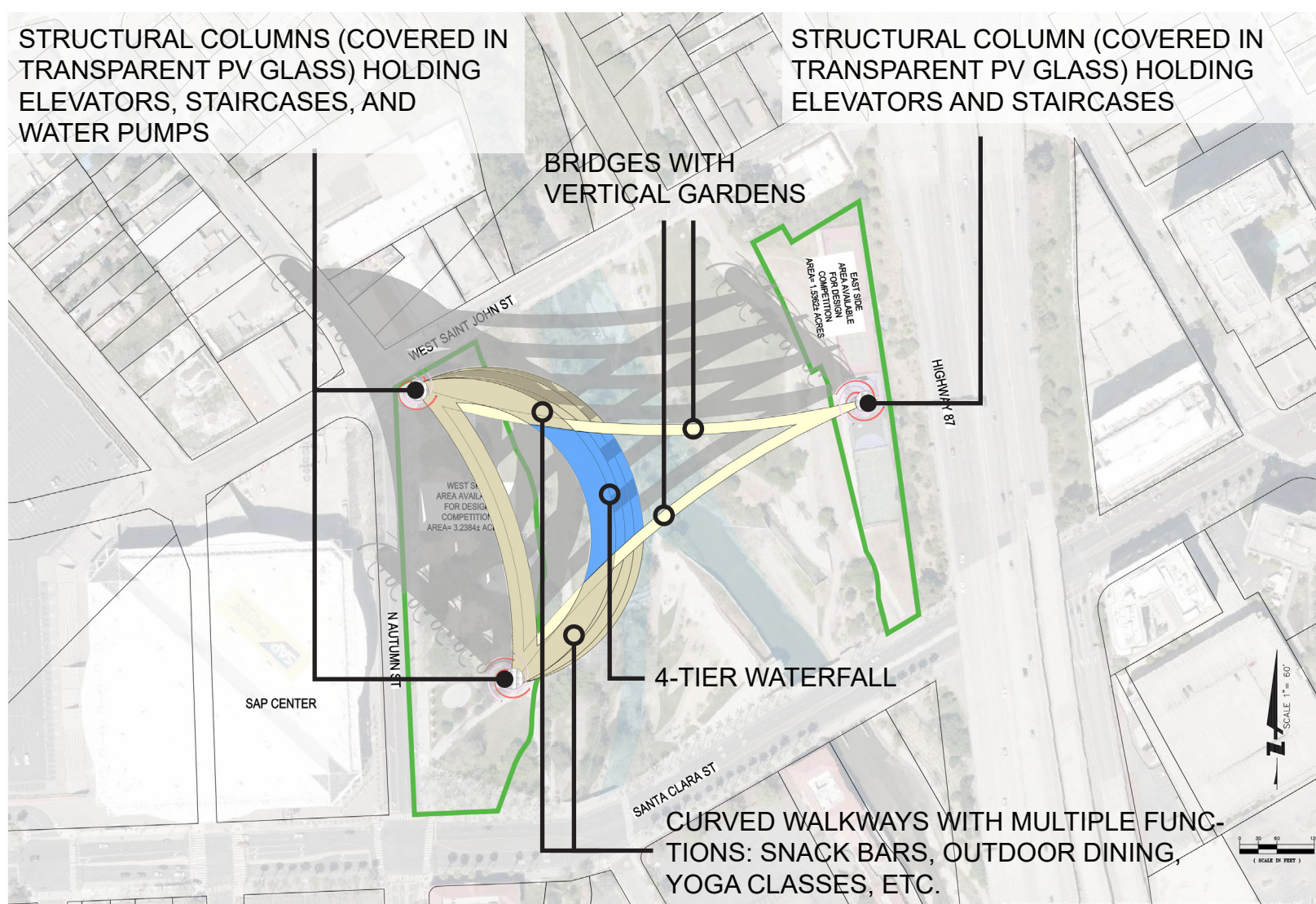
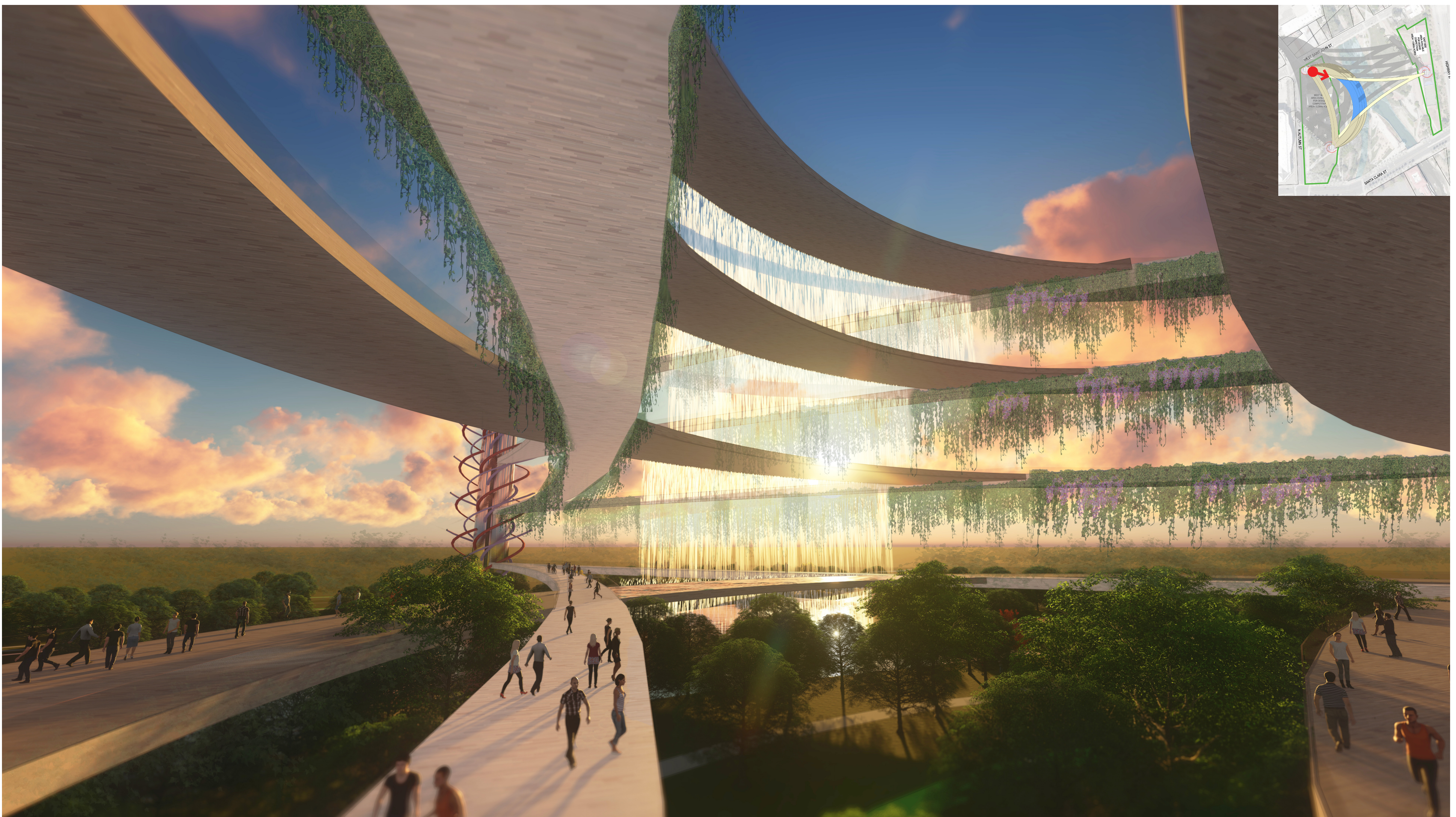
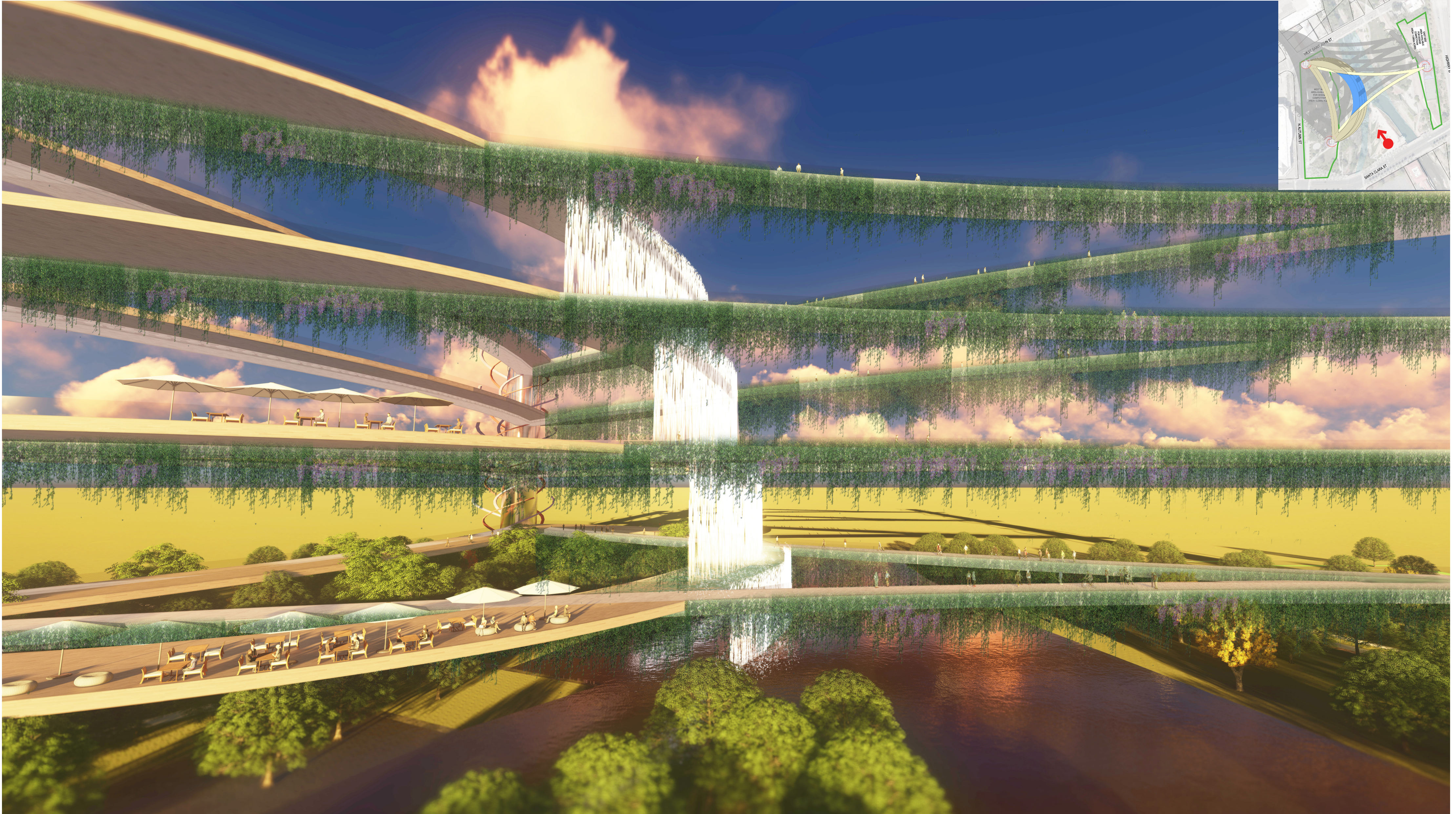
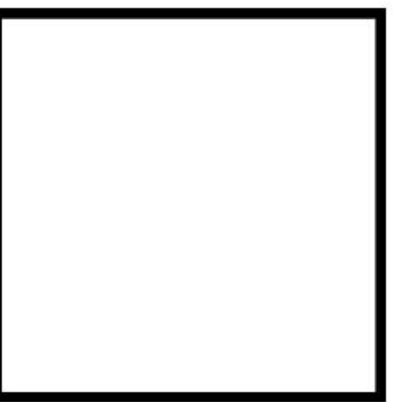
GREEN FUTURE FOR ARENA GREEN



At the confluence of Los Gatos Creek and the Guadalupe River, the world connects. The design emphasizes water to celebrate this connection to bring a green future to Arena Green, and San José. This design uses the computer Logic Gates concept in its shape to represent ideas coming together for the good of humanity. The curved walkways have multiple functions serving both residents and tourists. The 4-tier waterfall will generate hydropower, and the hanging gardens will add a visual focal point to its net-zero conceit.



GREEN FUTURE FOR ARENA GREEN



The concept uses a 4-tier waterfall to generate hydropower. Hydropower is the most efficient way to generate electricity. Modern hydro turbines can convert as much as 90% of the available energy into electricity.

