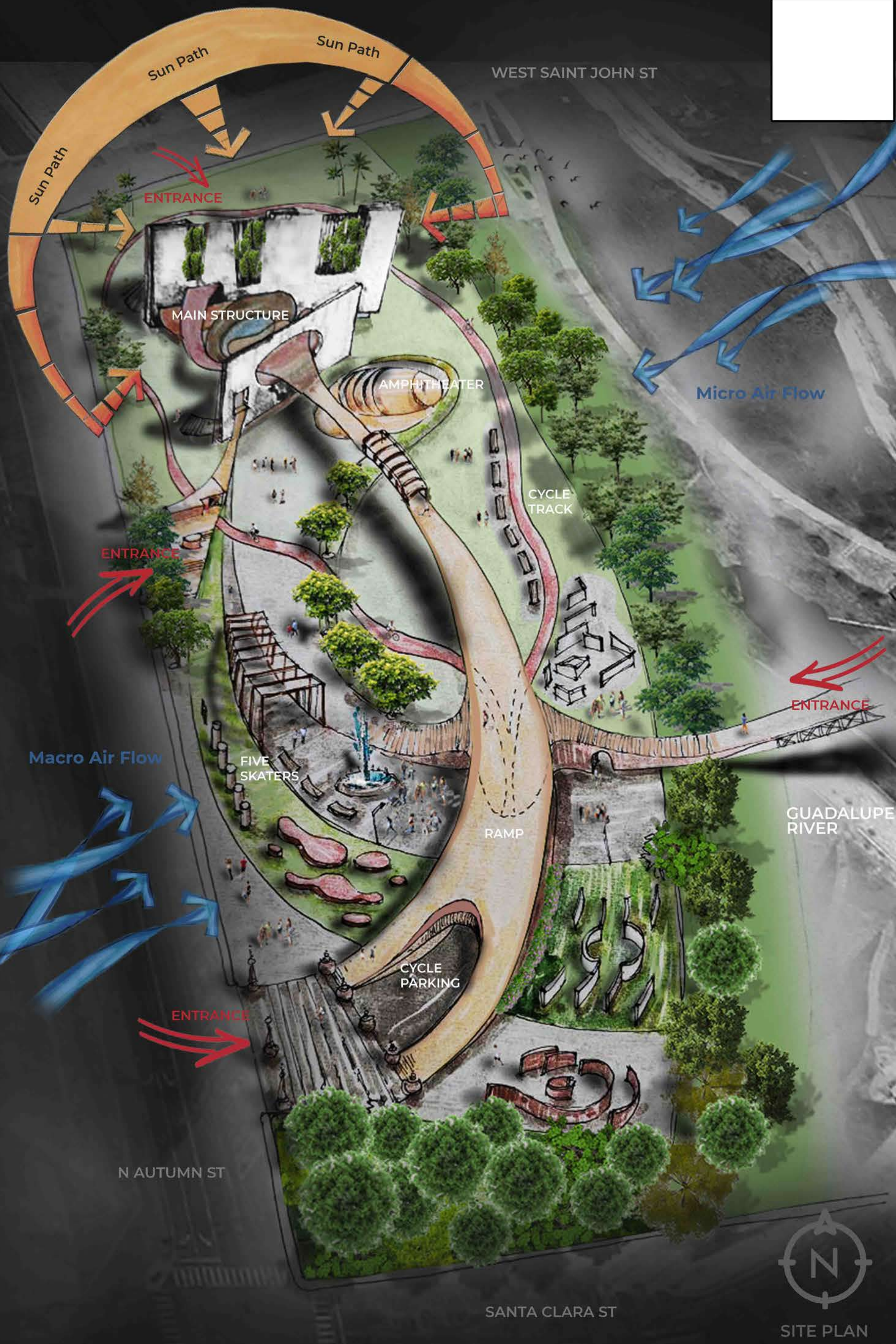


The design is made with the intention of not only being the landmark but to be a way of life for the inhabitants of the city. Created to look inwards and reflect has been the rumination of meditation and facets of spirituality. The structure is woven to integrate the built form with the ecology. Responding to evolve with the environment and evoking the senses.



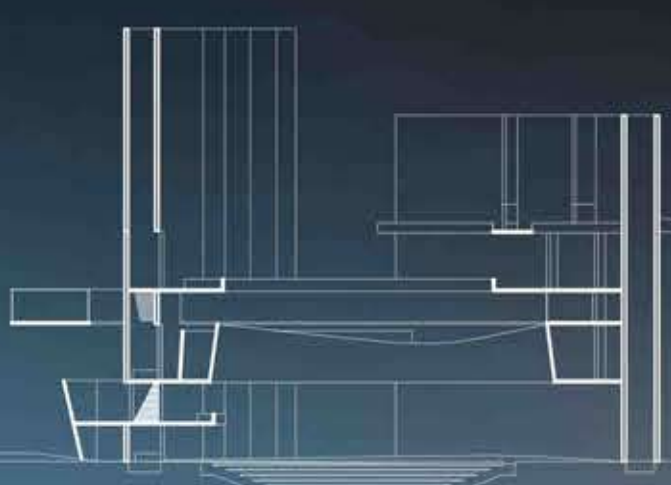
- ⑥ viewing deck overseeing the city
- ⑤ level made from metal to evoke sound. A viewing gallery
- ④ resonating sound from the level above in this enclosed glass box level.
- ③ a maze of inclined walls, weathering seasonally.
- ② entry to the maze from the winding ramp
- ① convergence of the water body to form an interesting vantage point within structure



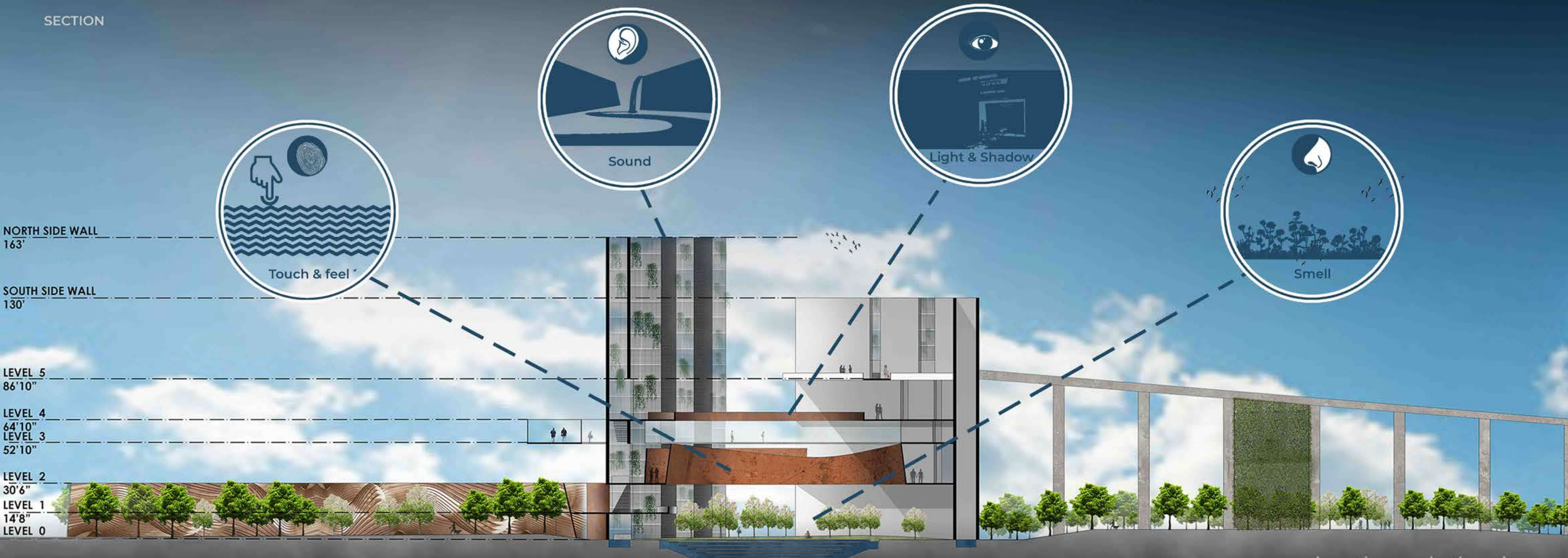
CONFLUENCE

Sensory Architecture

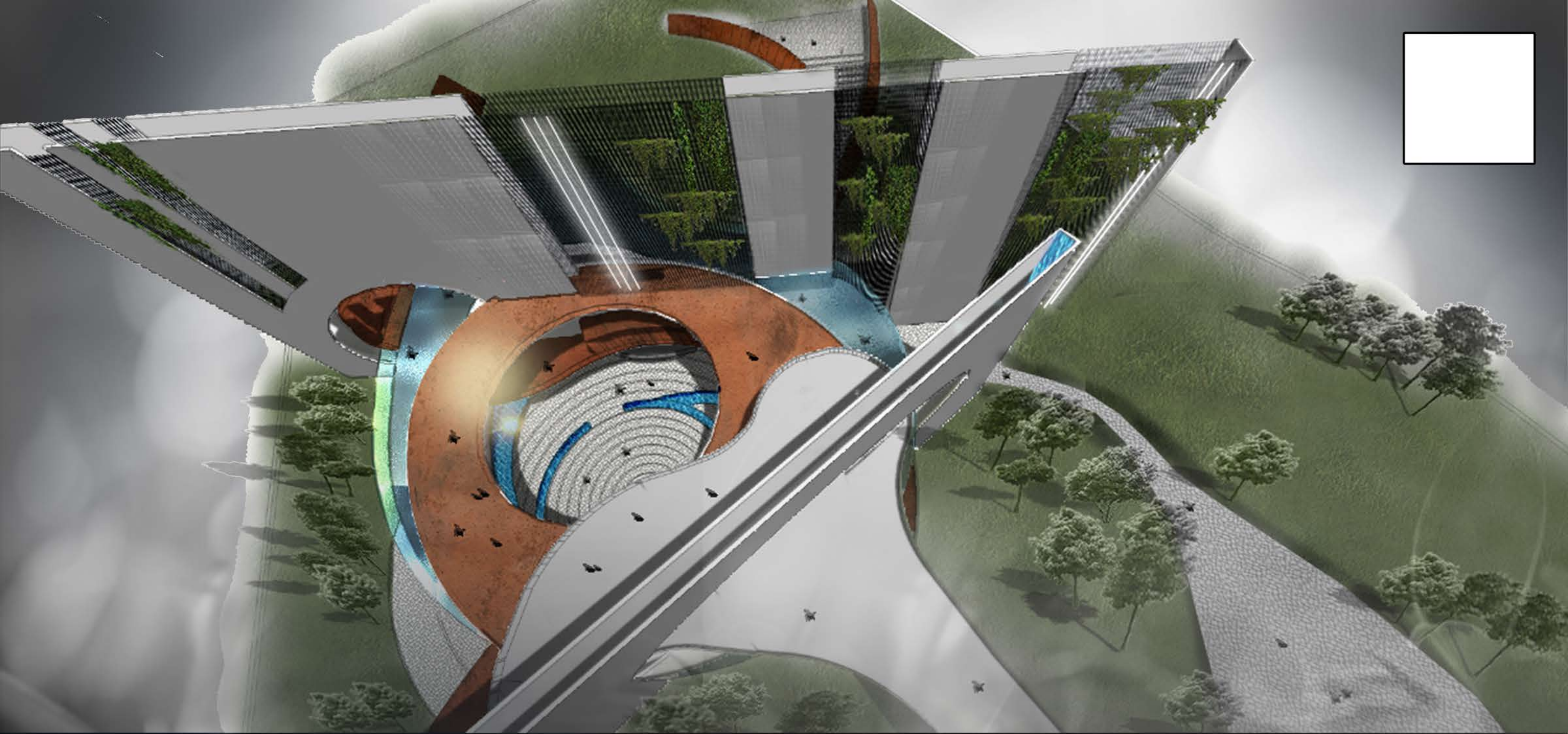
the structure triggers your sense of touch, feel, smell, sound & sight



SECTION



cross section through the site

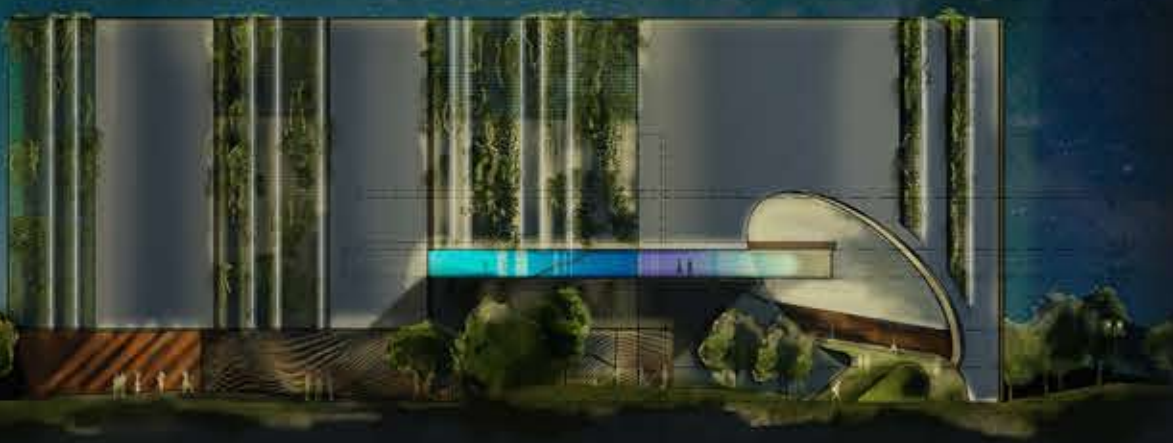


Day view

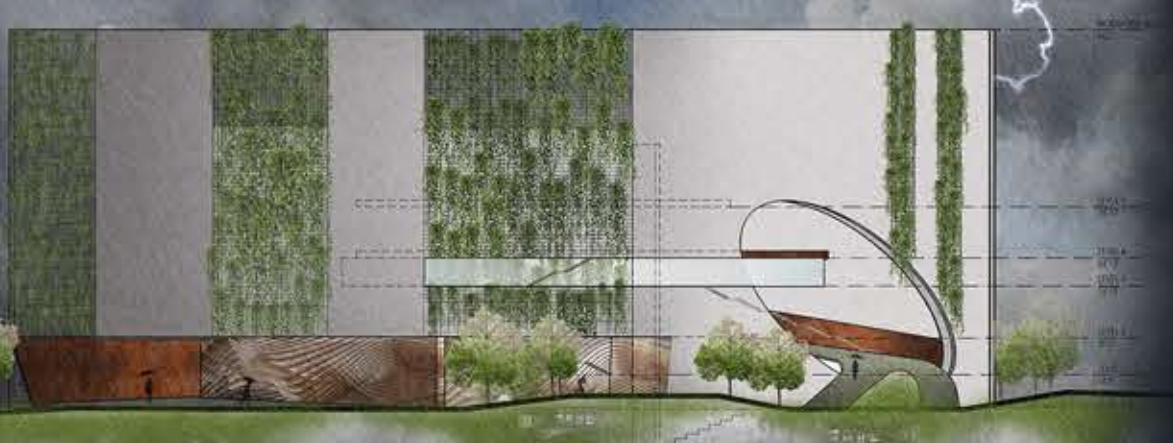


The north wall has maximum perforations to have a filtered light washing the core. Also the south side of the wall has been clad with solar panels.

Night view



The artificial lights have been planned in the perforated mesh of the walls so that it is not harsh yet effective.



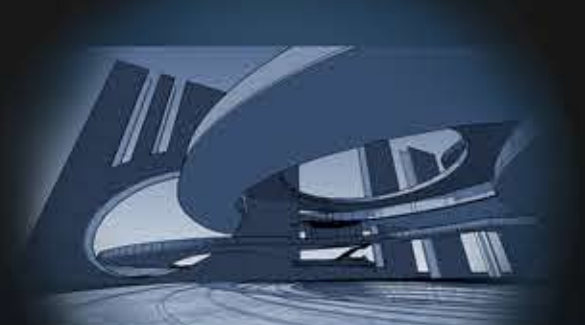
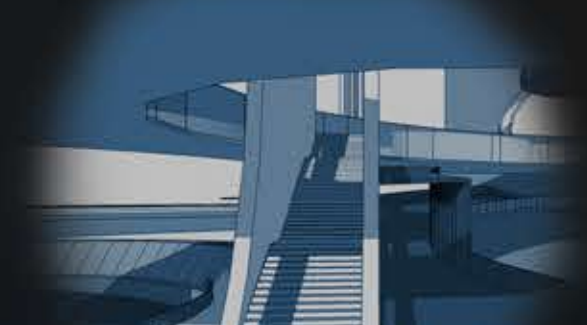
Amalgamating the flora and fauna on site with the structure to let it evolve as the seasons change.



Waterbody

Staircase

North wall



View from waterbody

