

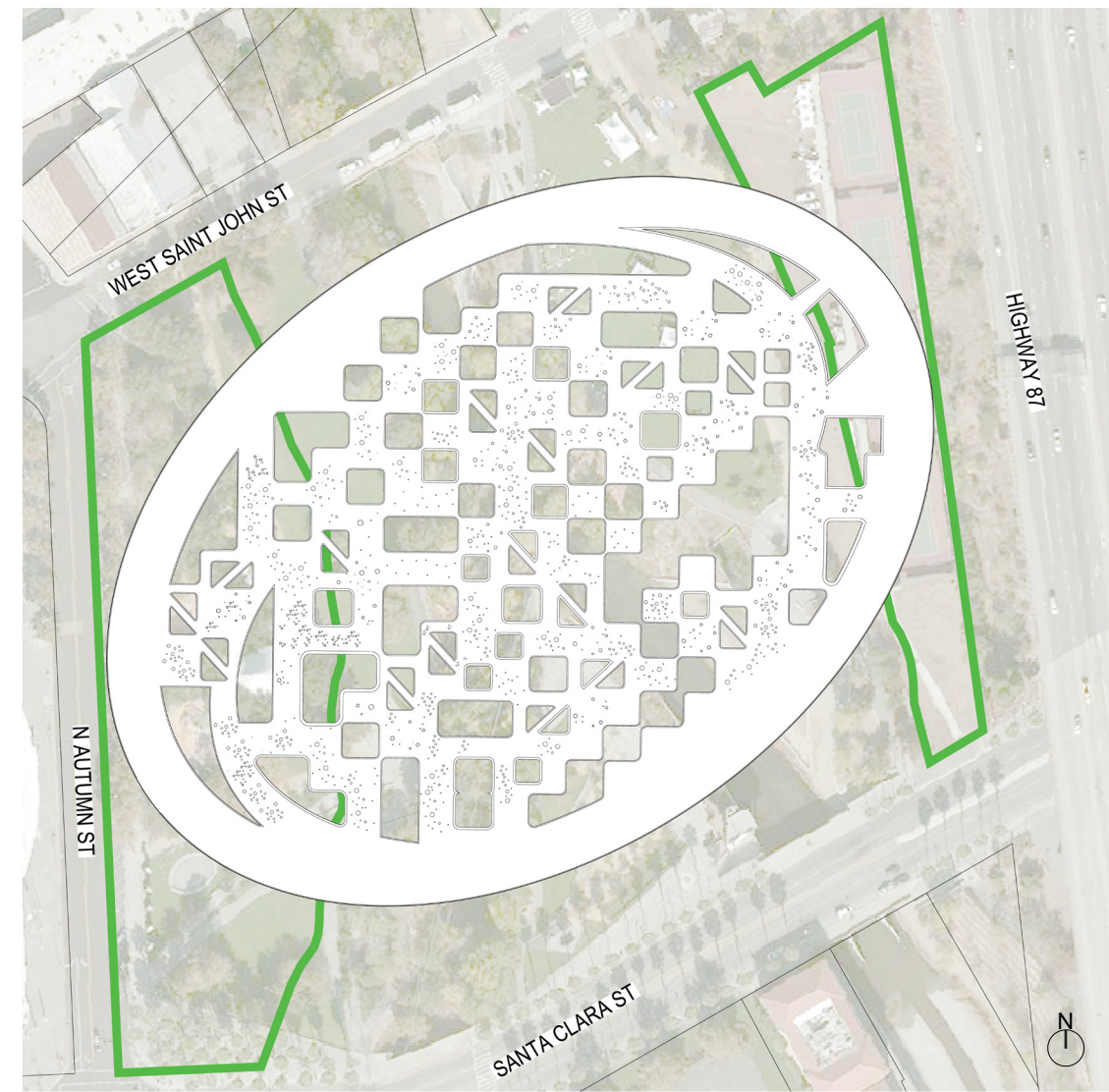
THE HOVERING OUTLOOK

San Jose, Silicon Valley's largest urban metropolis, is home to multiple leading industries in various sectors. Although a global icon, Silicon Valley lacks an urban landmark that defines and upholds the neighborhood's zeitgeist.

This project proposes that one does not need towering height to create a powerful iconic symbol for Silicon Valley and San Jose. The Outlook, located in Arena Greens, is an urban perforated public space surface located off of the Guadalupe Freeway. It creates a powerful space of gathering that is low to the ground and allows the natural environment to integrate with the elliptical form and acts as a bridge that spans the two edges of the park.

This large 845 ft. long ellipse acts as a slightly sloped piazza. The large length combined with the accessible low slope ramp allows the center of the space to reach 55 feet above the ground, thus creating a seamless walkway connecting the two ends of the site. The perforated patterning not only generates interesting moments underneath, but also allows sunlight to seep into the Riparian Corridor, keeping the flora and fauna alive and blossoming. Moreover, solar panels have a possibility of being placed on some parts of the sloped walkway, thereby making it a net-zero project. The solar energy accumulated lights up the LED lights surrounding the rim of every perforation.

While on the top of the outlook, this seamless bridge/ramp is broken down into a series of labyrinthine sections, which unfold and loop into itself, creating interesting moments of exposure to the city's skyline versus enclosed qualities of the maze itself. The Outlook, a serene experiential package, with light emanating from its pores, presents itself as a beacon, to the city of San Jose.



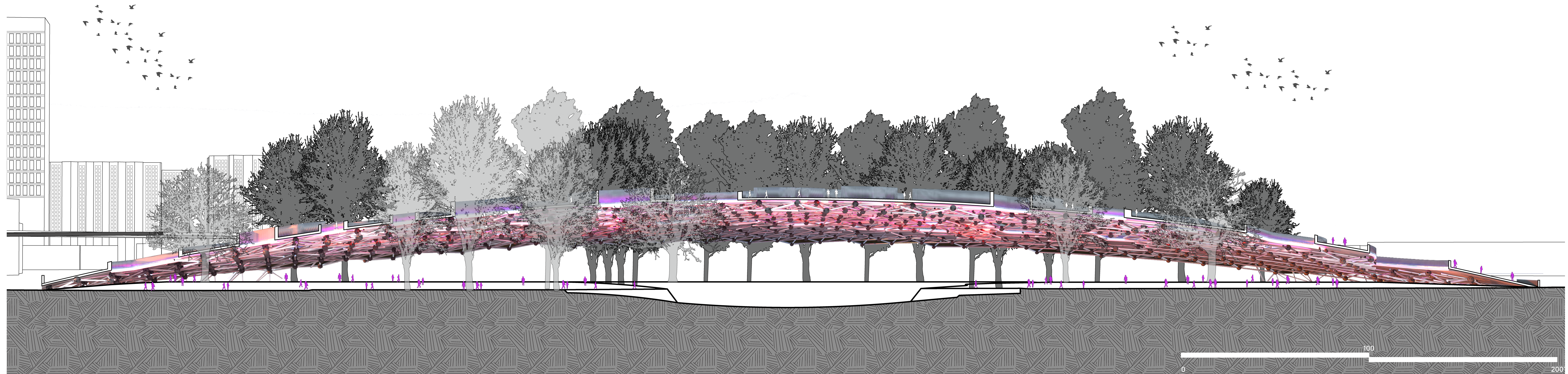
1. Site Plan.



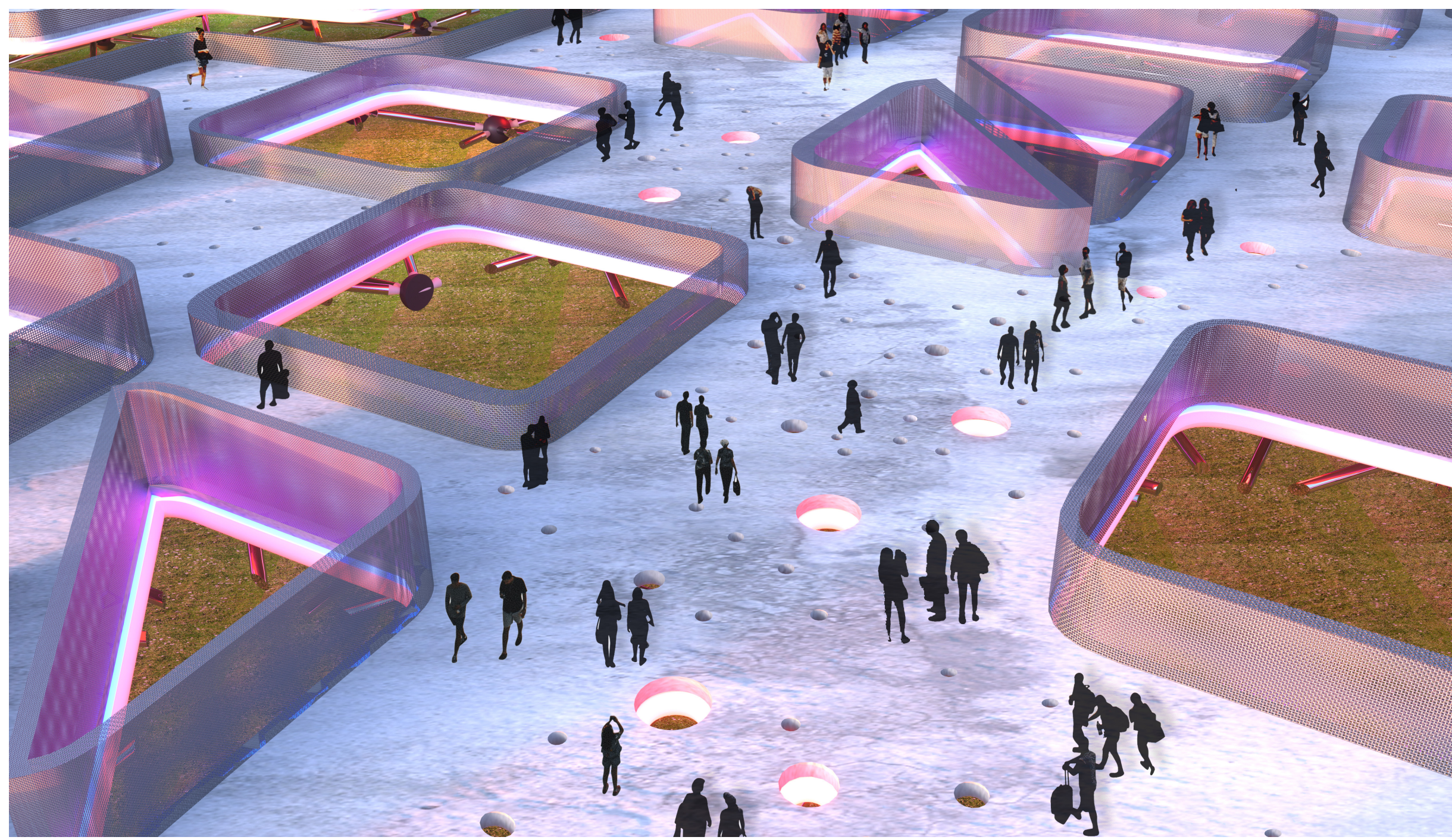
2. Plan showing meandering paths through The Outlook.



3. Birds Eye View showing the perforated concrete deck joining the two ends of the site.



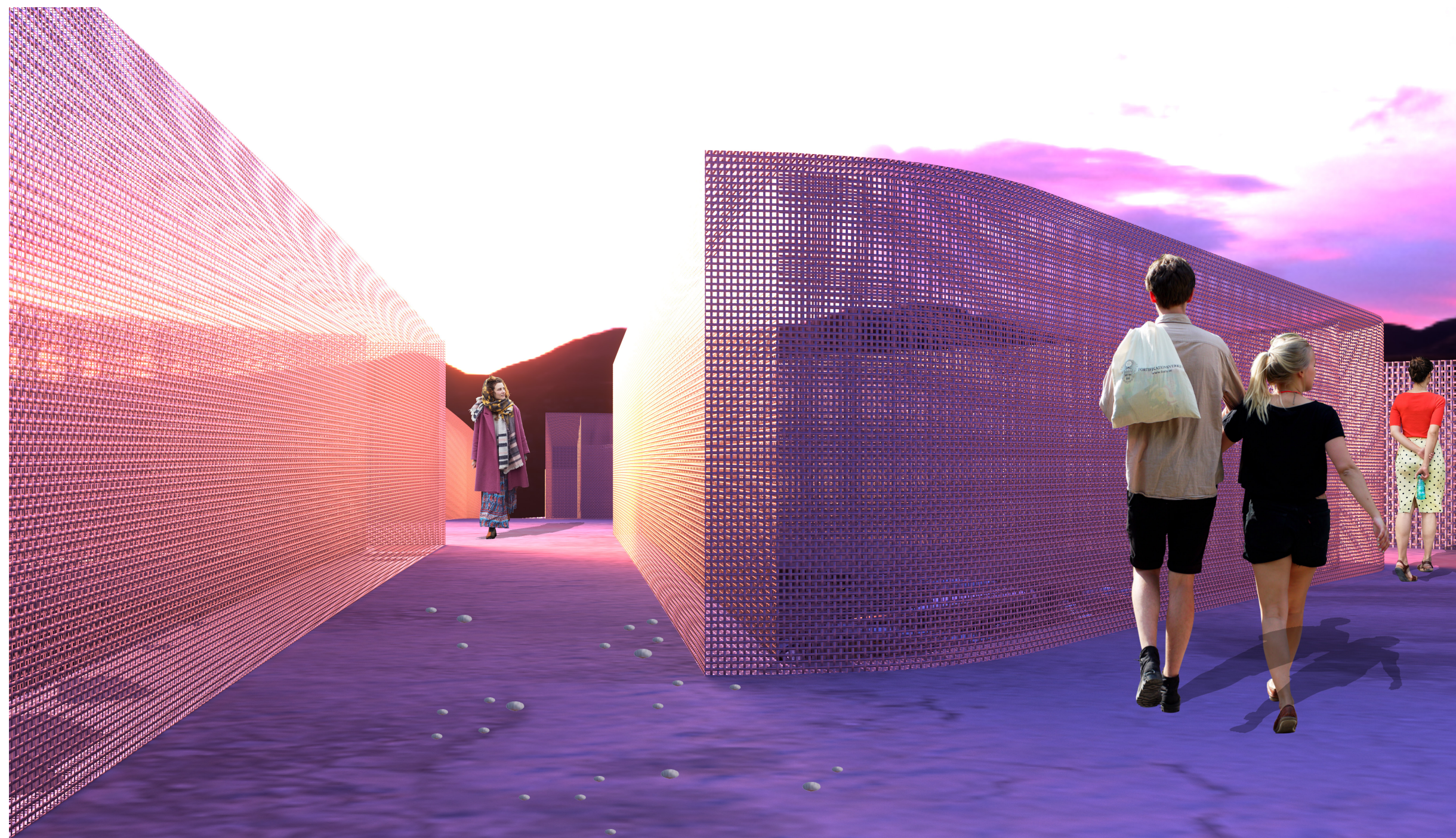
4. Longitudinal Section showcasing the span of The Outlook and the conjoined structure underneath. | SECTION AA'



5. Birds Eye View showcasing the variant meandering paths that can be traversed through in The Outlook.



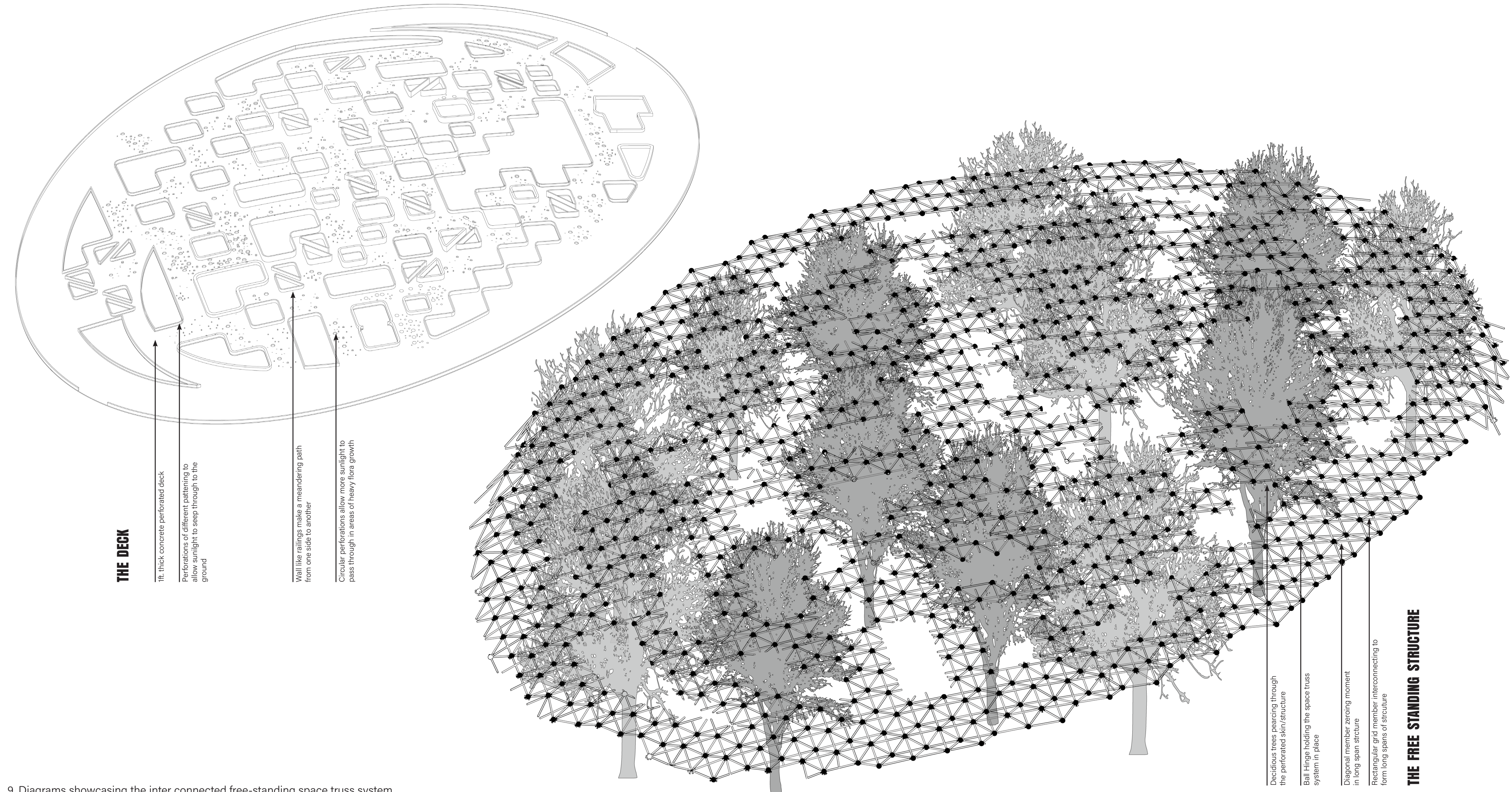
6. Underneath the Night's sky view of The Outlook; Underneath the large free-standing walkway.



7. Close-Up View of one of the Meandering paths.



8. Evening Shot of the City and The Outlook



THE DECK

18" thick concrete perforated deck.

Perforations of different patterning to allow light to seep through to the ground.

Wall like canopy makes a meandering path from one side to another.

Circular perforations allow more sunlight to pass through in areas of heavy foot growth.

Deciduous trees searching through the perforated skin/structure.

Ball bearings holding the space truss system in place.

Ball bearings holding the canopy moment in long span structure.

Rectangular grid member interconnecting to form long spans of structure.

THE FREE STANDING STRUCTURE