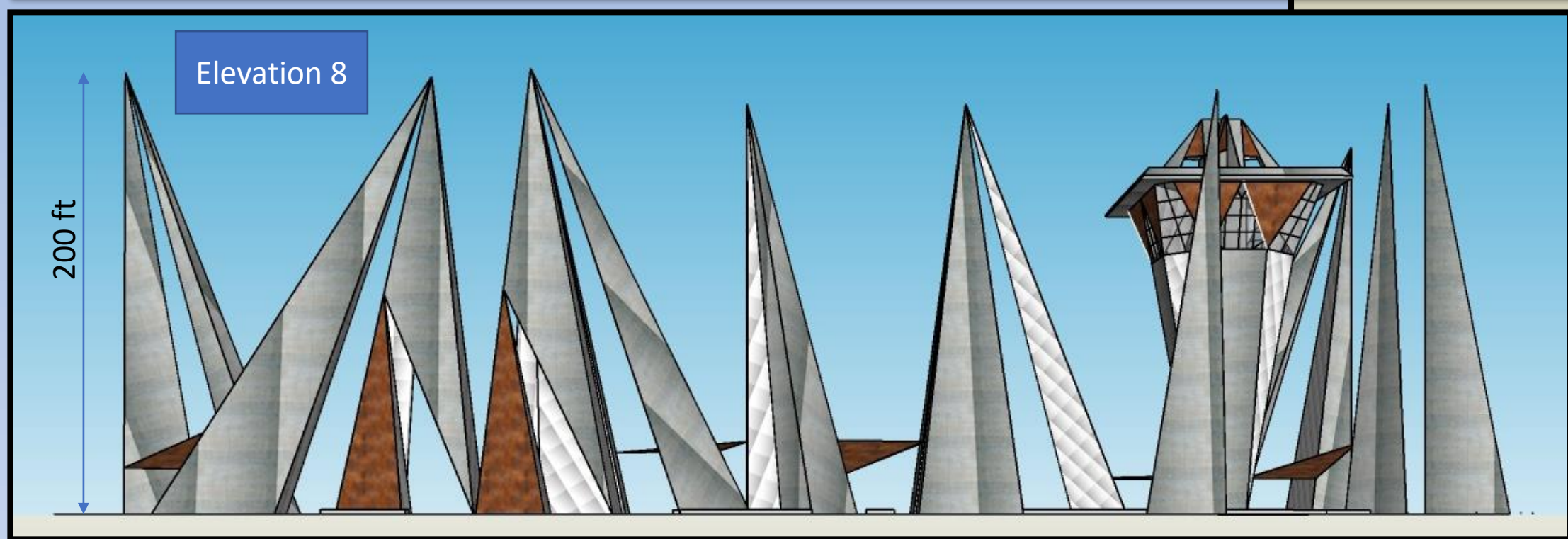
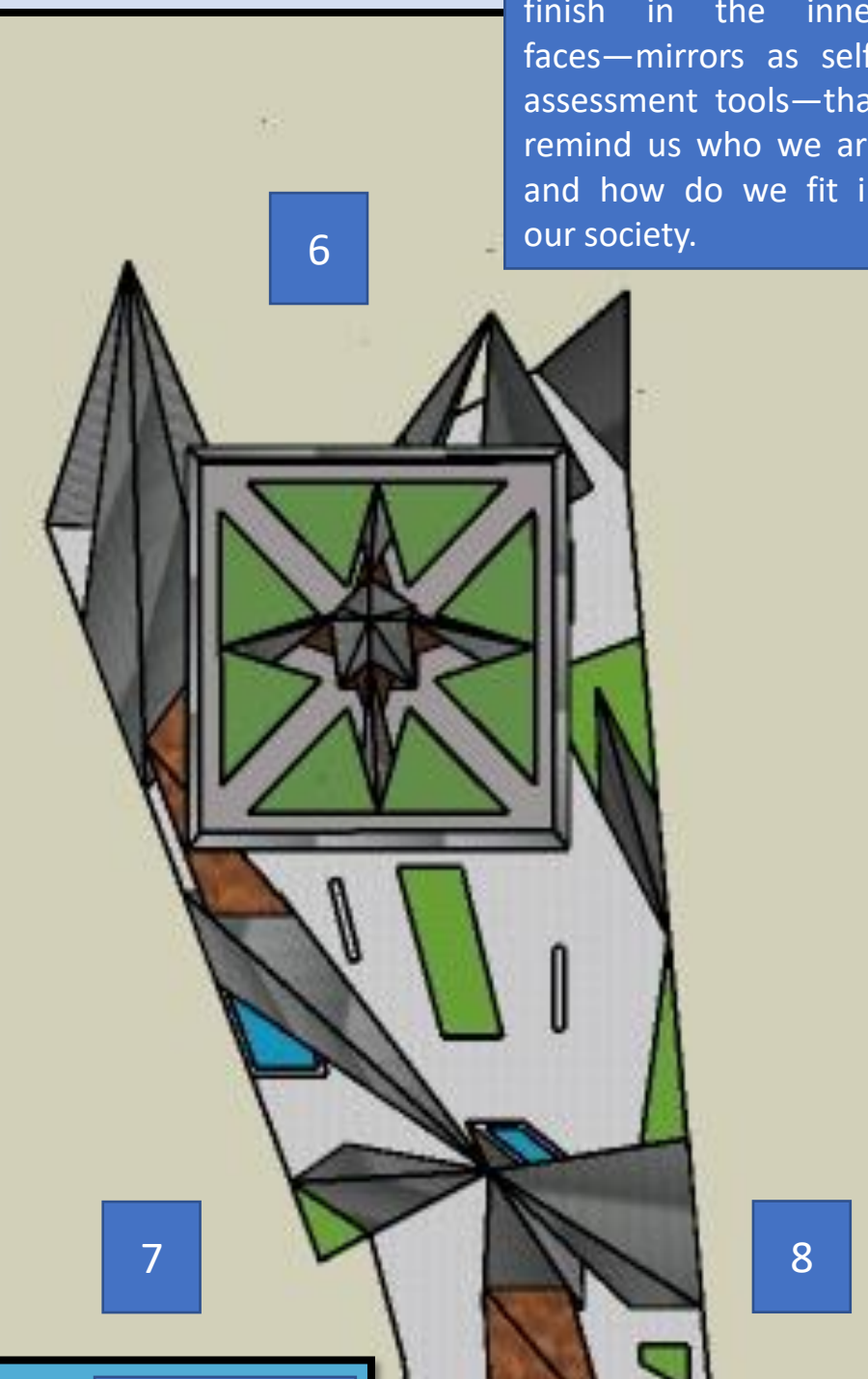
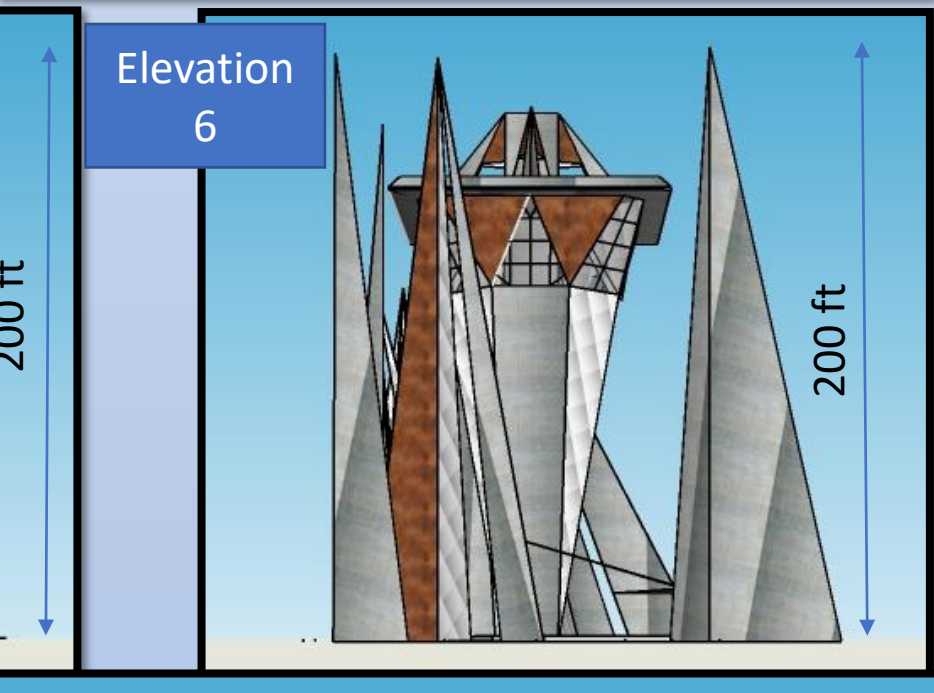
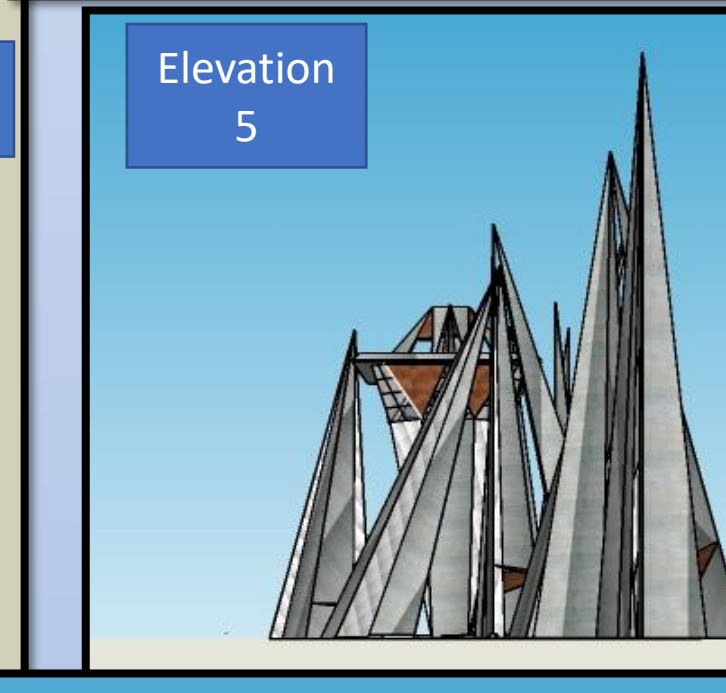
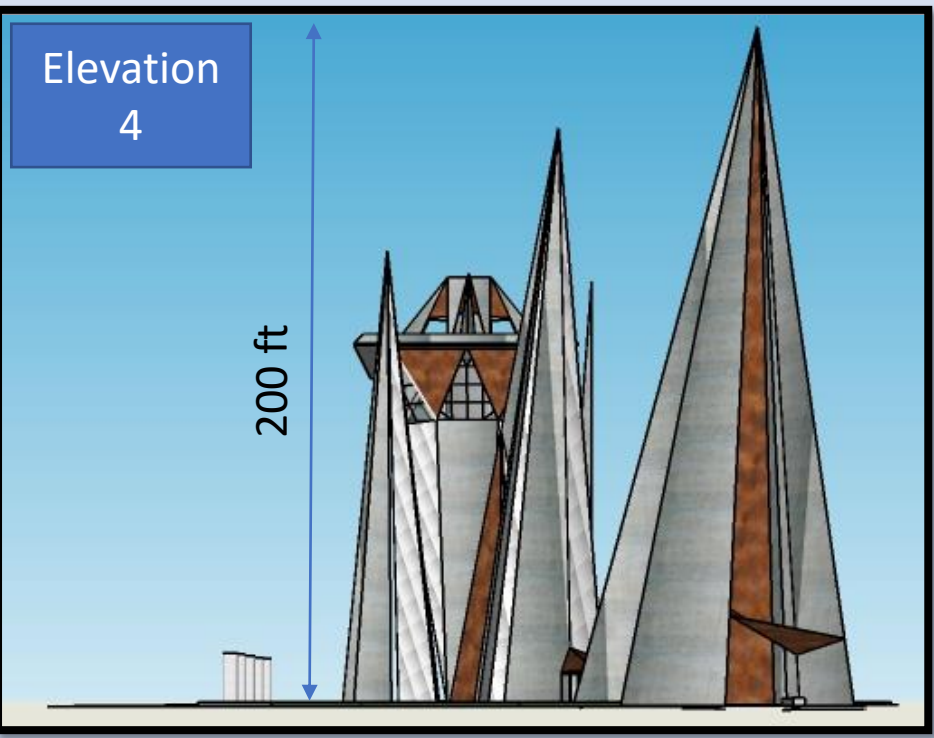
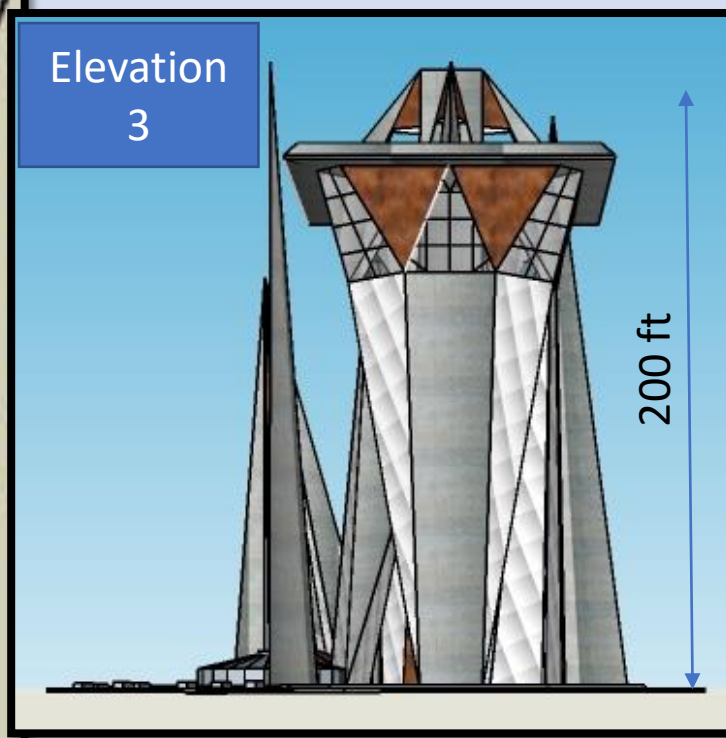
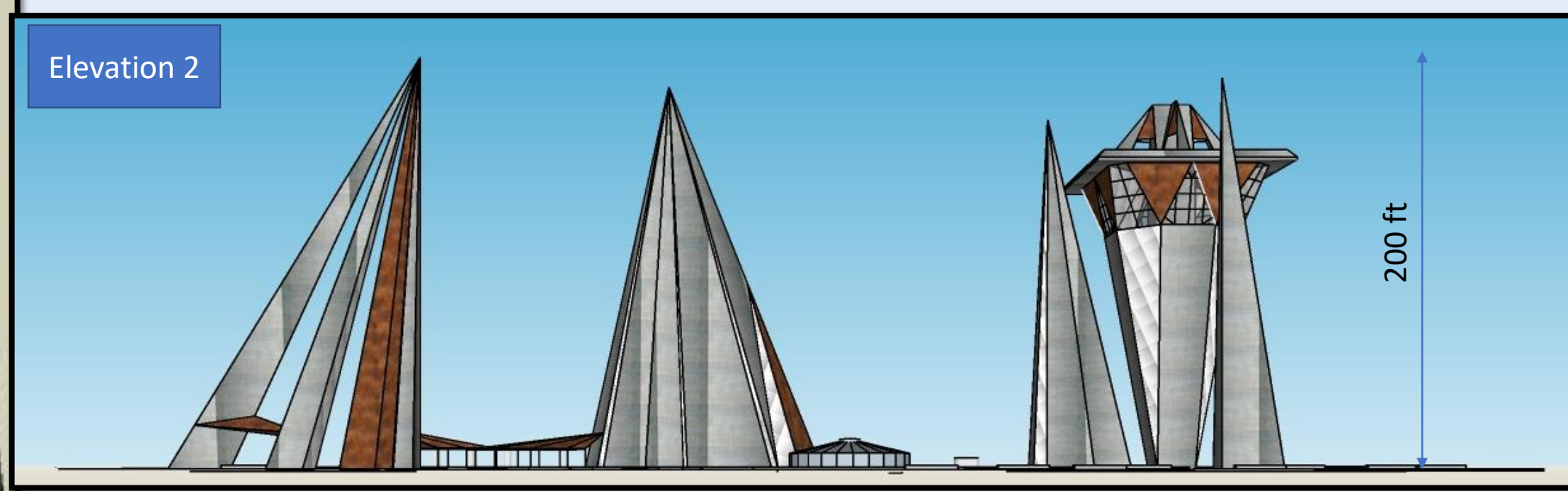
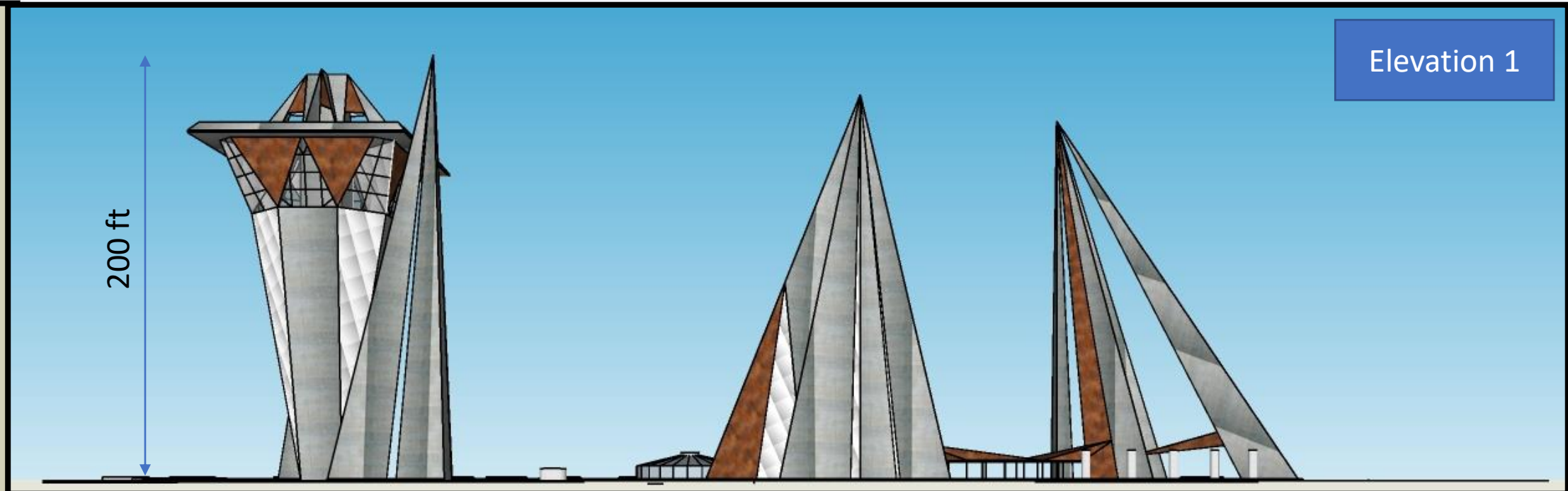
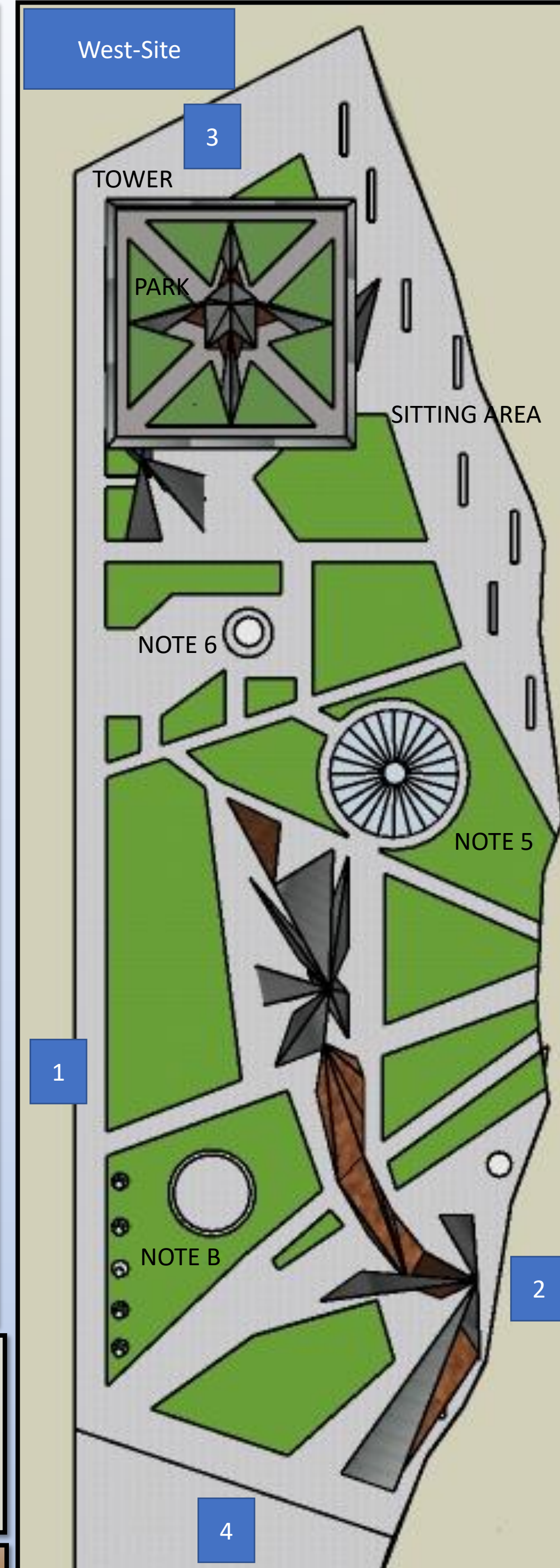
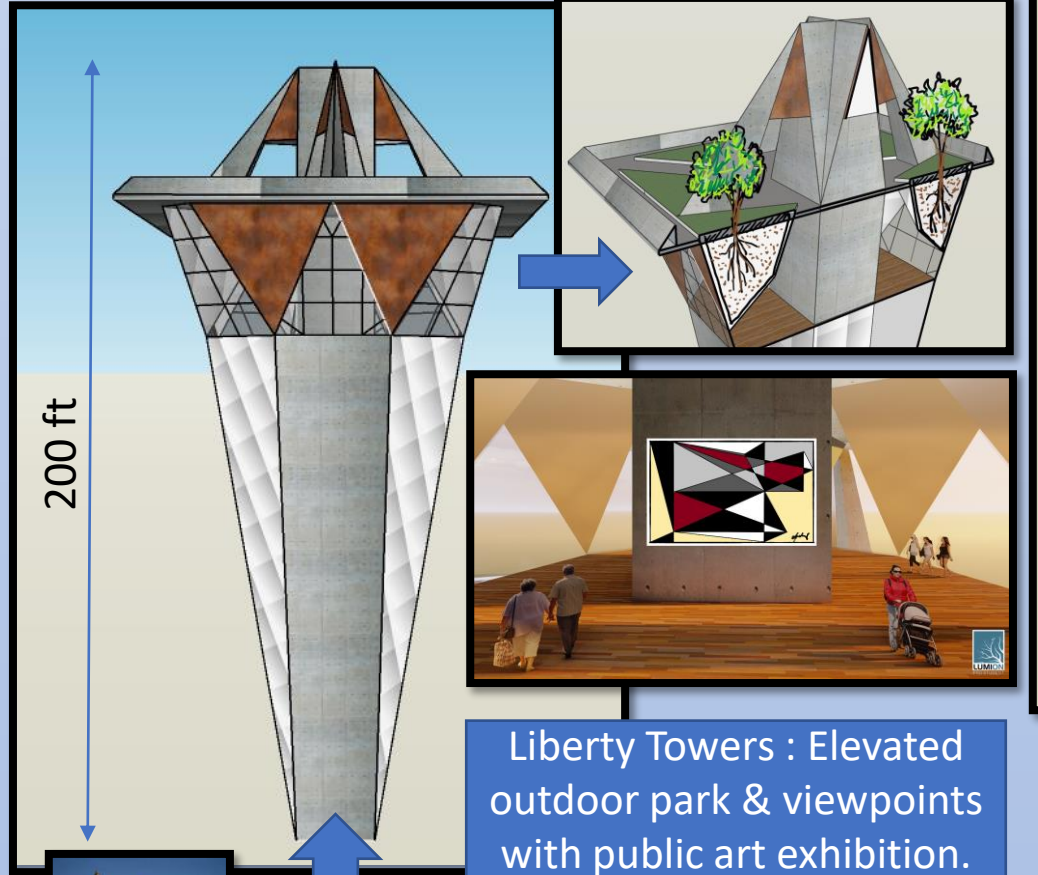


- NOTES**
1. ST. JOHN STREET OVERLOOK PLAZA
 2. TENNIS COURTS
 3. CONFLUENCE POINT
 4. SANTA CLARA STREET OVERLOOK PLAZA
 5. THE CHILDREN'S CAROUSEL
 6. TOT LOT & PLAYGROUND
- ITEMS OF CULTURAL SIGNIFICANCE**
- A. WEAVER'S GIFT
 - B. FIVE SKATERS
 - C. SAN JOSE VIETNAM MEMORIAL
 - D. RANGERS STATION
 - E. TRIBUTARIES MONUMENT
- HEIGHT LIMITATION**
DESIGN COMPETITION HEIGHT LIMITATION IS 200 FEET ABOVE EXISTING GRADE.
- EXISTING PUBLIC ART AND AMENITIES ON THE SITE THAT CANNOT BE MOVED OR ALTERED**
- GUADALUPE RIVER TRAIL
 - TRIBUTARIES MONUMENT
 - SAN JOSE VIETNAM MEMORIAL
 - WEAVER'S GIFT
 - FIVE SKATERS (INCLUDING THE REFLECTIVE POOL, PILLARS AND METAL STANDS)
- EXISTING AMENITIES ON THE SITE THAT CANNOT BE MOVED BUT CAN BE ACTIVATED AND IMPROVED**
- ST. JOHN STREET OVERLOOK PLAZA
 - CONFLUENCE POINT
 - SANTA CLARA STREET OVERLOOK PLAZA
 - GRPC SATELLITE VISITOR CENTER (PLANNED TO BE USED FOR PARK-SERVING COMMERCIAL AND VISITOR SERVICES)
 - THE EXISTING BRIDGE CAN BE MODIFIED BUT THE STRUCTURE MUST REMAIN
- EXISTING ASPECTS OF THE SITE THAT CAN (OR ARE ALREADY PLANNED TO) BE MODIFIED OR RELOCATED CONSISTENT WITH CITY OF SAN JOSE ORDINANCES. THEY CAN BE RELOCATED ON-SITE OR OFF-SITE**
- TENNIS COURTS **REMOVE**
 - CHILDREN'S CAROUSEL **KEEP**
 - TOT LOT & PLAYGROUND **KEEP**
 - TREES (INCLUDING PALM TREES) **KEEP**
 - DONOR RECOGNITION ELEMENTS, INCLUDING BENCHES AND PLAQUES, MUST BE PRESERVED, BUT MAY BE RELOCATED ON-SITE WITH APPROVAL OF GRPC AND PRNS IN COORDINATION WITH THE DONORS. **KEEP**



The design consists of a series of sharp structures that reach 200 ft visible at a far distance. These monuments represent the "breakthrough" of innovation as they resemble giant spearhead tips breaking through the ground and reaching for the sky. The monuments are on both, west and east sites and are constructed in reinforced concrete, a material that will perpetuate for a minimum of 70-100 years and that require very little maintenance. In addition, some of the faces are clad in rusted metal that match existing bridges and other structures; a confluence of the old and the new.



On the West-Site, the monuments are surrounded by nature as 80% of the existing landscape is left intact to preserve the site's DNA. Nature and architecture complement one another, the monuments are a clear, sophisticated statement. They stand in contrast to nature, rather than appear as an outgrowth of some natural formation. This site will invite you to remain calm and put, as a sitting area is designed to make you feel unrushed.

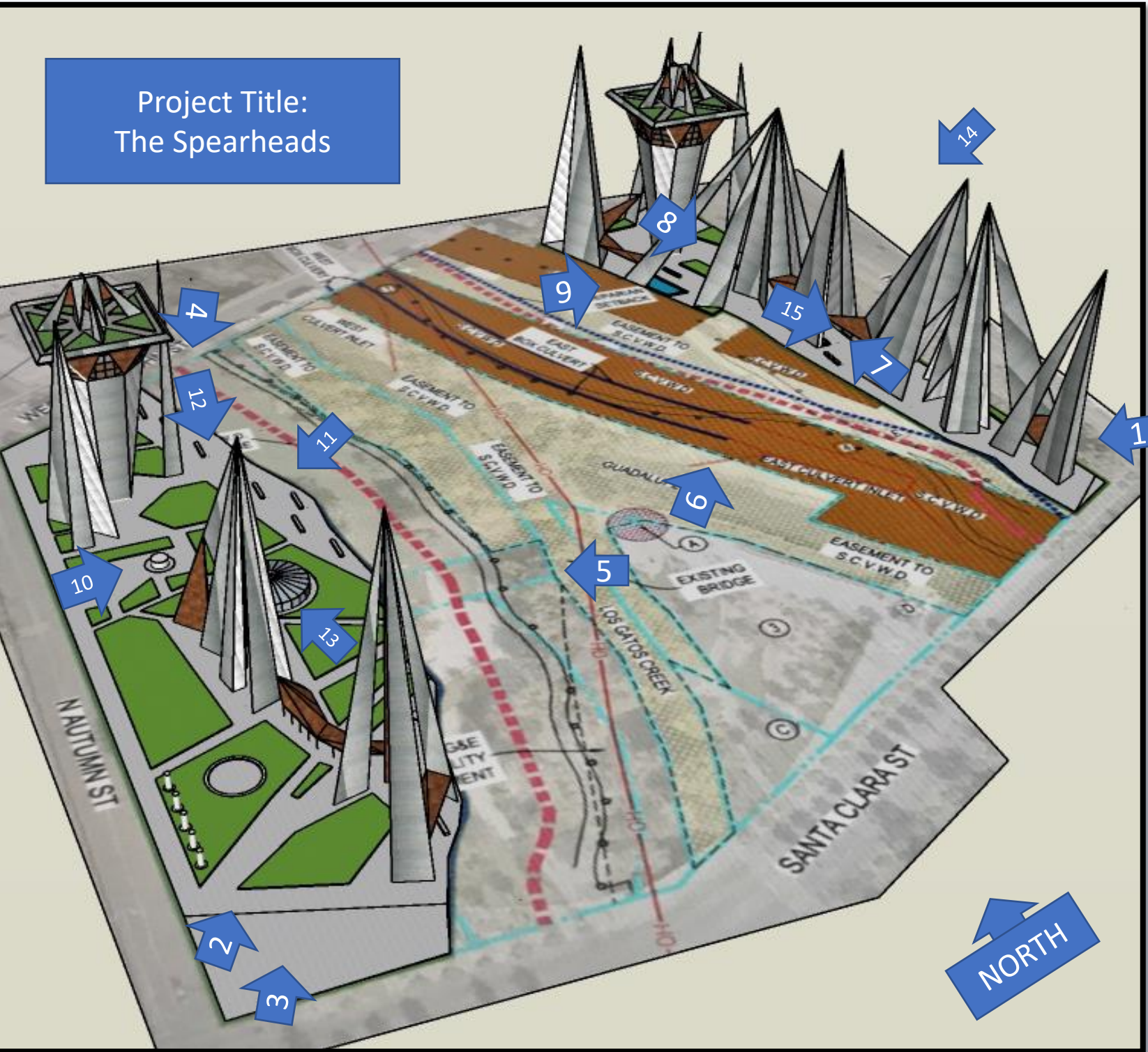
Both sites have a tower that also reach a height of 200 ft. They offer a 360-degree view of the monuments, park, and city. They do it in two ways: through an indoor observation area where security glass enhance the uninterrupted, panoramic views—this area is also designed for public art display—and through an outdoor area at the top level where people will gather to breath fresh air in a beautiful botanical landscape.

Sites in Perspective

Confluence Point Views

The East-Site is overtaken by the monuments creating a magnificent, dense skyline. Furthermore, beyond the visual impact and urban statement that it creates, the structures serve another purpose: they draw a pathway at ground level. Civic involvement is encouraged as it attracts people to walk through these monuments but also invites them to sit and meditate. The structures are a point of "reflection", literally. They have a mirror like finish in the inner faces—mirrors as self-assessment tools—that remind us who we are and how do we fit in our society.

Project Title:
The Spearheads



Project Summary

Urban Confluence Silicon Valley's proposed landmark and icon addresses the city's need for global identity, civic gathering, and harmonic nature in the world's epicenter for innovation by creating an attractive and simple public space that is full of different possibilities and perspectives. A series of spearhead-tip monuments that pierce the sky will remind us the importance of breaking through obstacles to lead the way for self and others while mirrors and pathways show us that the answer to our problems are within reach.

Urban confluence will break through the city grounds and invite over the world around it!

Net-zero design approach:

- Photovoltaic panels at top of towers & ground canopies.
- Natural light throughout the monuments and towers.
- High efficiency LED lights. (including solar powered streetlights).
- Energy recovery ventilation at towers.
- Lighting controls at tower (dimming sensors).
- Insulated glass at towers (high performance, thermal windows).
- Grey water recovery system in restrooms.
- Water efficient landscaping and fountains.



Spearheads

