

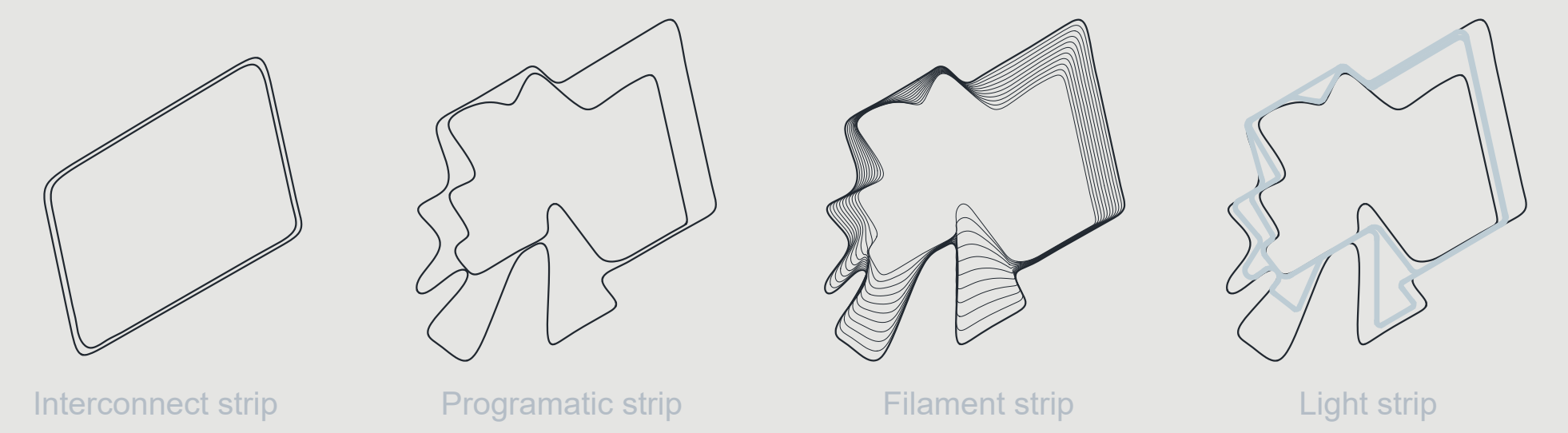
*Light strip* was inspired upon two values that represent Silicon Valley throughout an infinite pedestrian path.

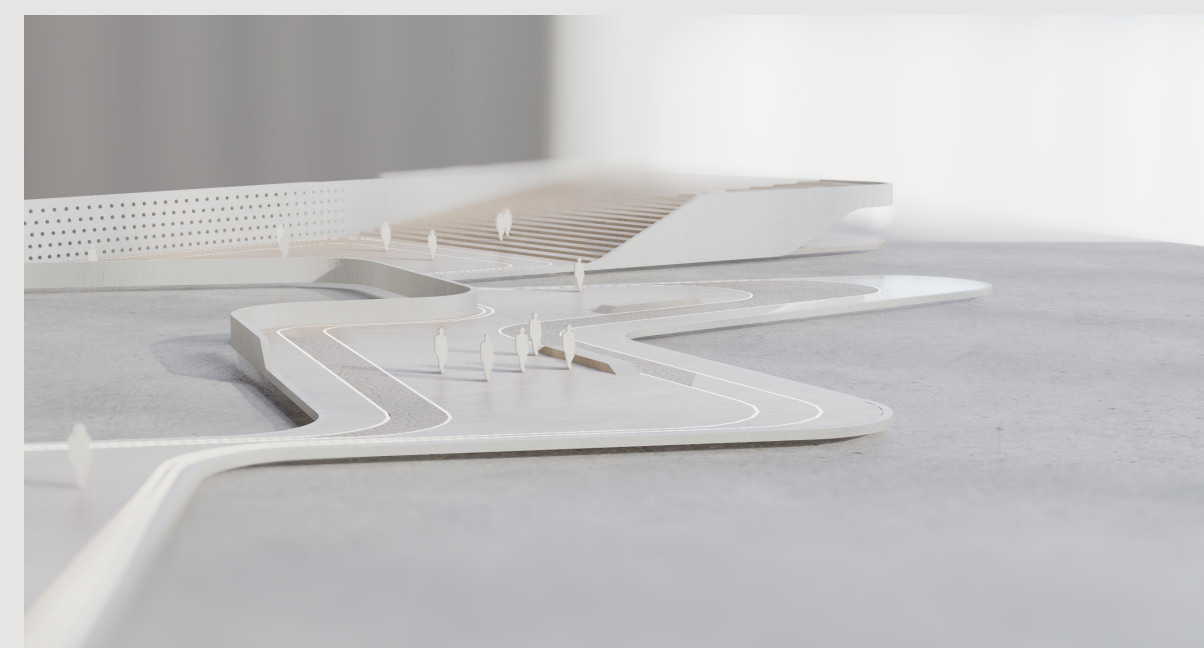
The first value is innovation related to the evolution infinite where the process can reach highs and lows in order to finally evolve achieved through this, an iconic structure that represents the technological advances which moves at great speed such as the light, correlated to an intricate way of a temporal symbol that transforms by creating in a way a continuous light strip and culminate at its

peak on an overlooking platform a sublime place where one can observe the overall context getting a much broader perspective.

The second value is the revolution linked to its community which is capable of changing the standards that have been established to trespass geographical boundaries like an epicenter that provokes and the social progress where the program can be discovered throughout a path and urban identity derived by its diverse of cultural, social and sport activities.

# Light strip





## Strategy

The project strategy is to confine through a space both sensitive and powerful throughout a thin strip of light that embraces the entire area for the care of the environment, economic and social aspects.

The site design is imagined as a three-dimensional ribbon that's capable of expanding or thinning in size as it extends or covers ground on the existing program and series of activities. A pedestrian path that can gather all activity and interweave the entire area through one element. This programmatic path engages and connects the visitor as well as elevates the user to a higher segment of the strip to be able to view the city skyline and admire the parks continuous strip of light.

- |   |  |
|---|--|
| 1<br>Lookout frame<br>Height: 200 ft<br>Length: 80 ft<br>Width: 33 ft | 7<br>Frame<br>Height: 145 ft<br>Length: 145 ft<br>Width: 21 ft |
| 2<br>Carousel square<br>Area: 12,380 sq ft                            | 8<br>Skatepark<br>Area: 6,565 sq ft                            |
| 3<br>Cultural square<br>Area: 8,990 sq ft                             | 9<br>Courts<br>Area: 22,600 sq ft                              |
| 4<br>Forum / Gallery<br>Area: 32,185 sq ft                            | 10<br>Playground<br>Area: 11,625 sq ft                         |
| 5<br>Bridge<br>Area: 860 sq ft  | 11<br>Picnic square<br>Area: 16,520 sq ft                      |
| 6<br>Memorial<br>Area: 46,390 sq ft                                   | 12<br>Lookout bridge<br>Area: 6,835 sq ft                      |



## Net-zero park



200 ft

*Light strip* has considered various systems in the help to achieving a *net-zero park* by implementing 5 principles:

1. On site renewable energy
2. Reduce the energy demand
3. High efficiency heating and cooling
4. Use of rain water
5. Commissioning plan

145 ft

