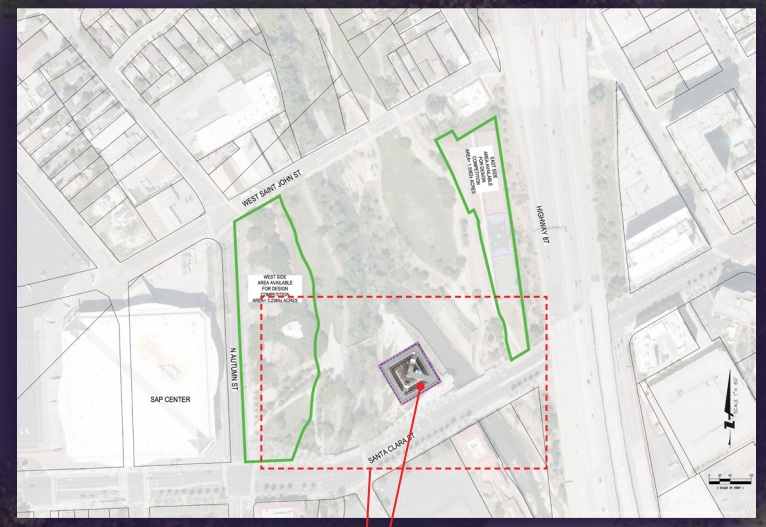


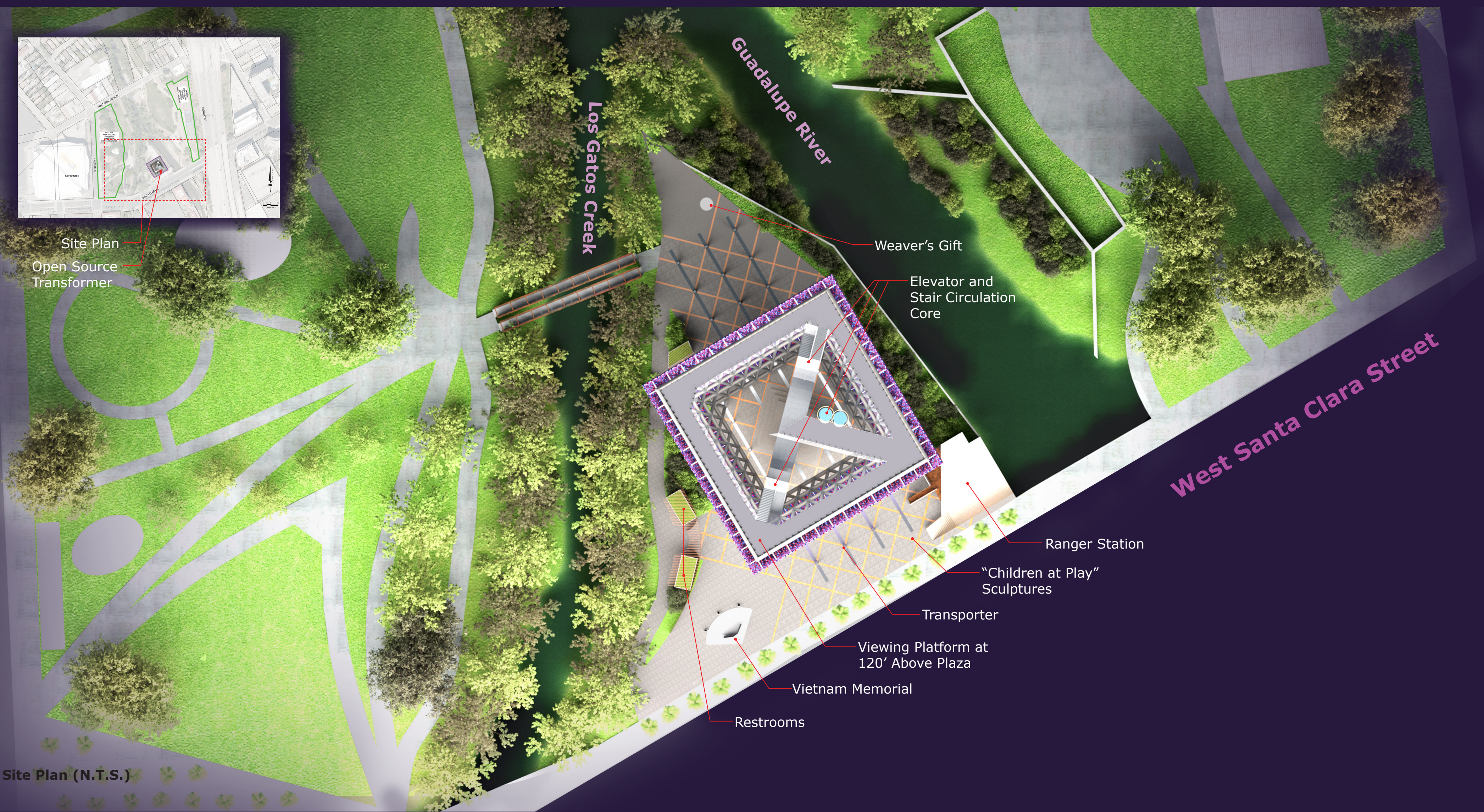
open source transformer



View @ River Confluence Looking South



Site Plan
Open Source
Transformer



Site Plan (N.T.S.)

Presence

The chosen location is the most powerful position available across the project area. The land form between the convergence of the Guadalupe River branches is the natural center of gravity for the park. With a commanding presence on Santa Clara Street, it is unobstructed from the freeway and is separated from the mass of the SAP Center.

Monumental Form

It can be argued that the pyramids are the most massive and powerful monuments ever constructed. The inversion of the pyramidal form is an expression of the weightlessness and transportability of everything, even pyramids, in the new world experience facilitated by Silicon Valley.

Luminous Screen

Of the technological wonders that have been developed in Silicon Valley, it is the luminous screen that gives us access to all the rest of what technology provides. Our proposal converts the two-dimensional screen into a physical place.

Pixels

Representative of luminous screens, the enclosing surface is composed of 26,600 "pixels". Coated with an iridescent finish, they are free to rotate on horizontal axles. Wind generated movement will cause the entire surface to shimmer with points of shifting color, the way a computer screen does as it comes to life.

Carbon Footprint

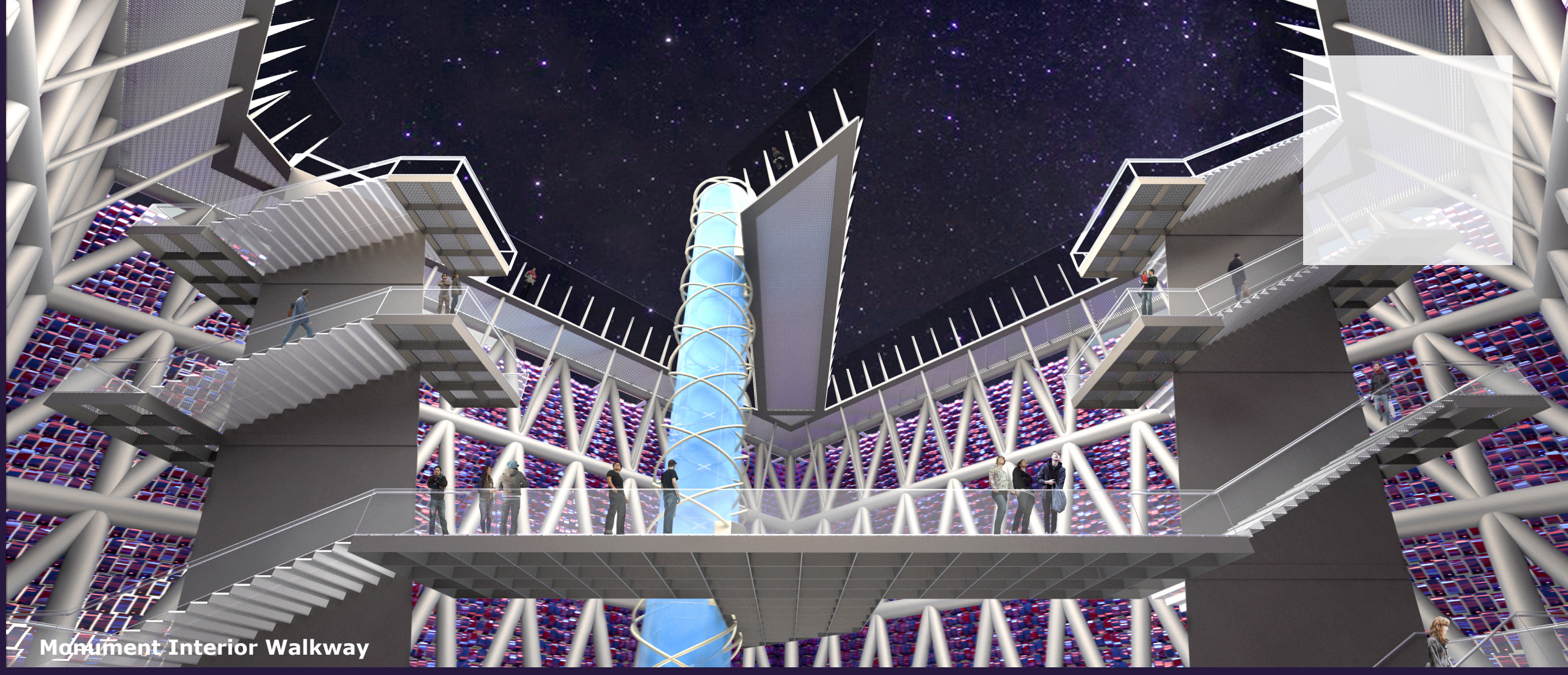
The structural frame would be made entirely from recycled steel. This would not be unusual, in that steel is the most recycled construction material. The "pixels" and their support armature would most likely be aluminum, this material could also be of entirely recycled content. Even the glass guardrails could be specified for a high recycled content. The pixels will be articulated by the natural breezes present and will not require any energy after they are fabricated. Raw materials for the concrete footings and paving systems could all be locally sourced, to reduce the impact of shipping.

The Monument does not have any enclosed space. Therefore, there is no air conditioning. The energy to operate elevators, the "Transporters" and for lighting could all be supplied entirely from Green Energy sources. These might include a photovoltaic panel field in close proximity to the monument, if an appropriate location can be agreed upon. (This might apply to the remote Transporter locations around the globe). If that were the case, the Monument could achieve a Net Zero standard. Beyond that, any sustainable strategy with respect to any aspect of the construction and operation of the Monument would be vigorously pursued.

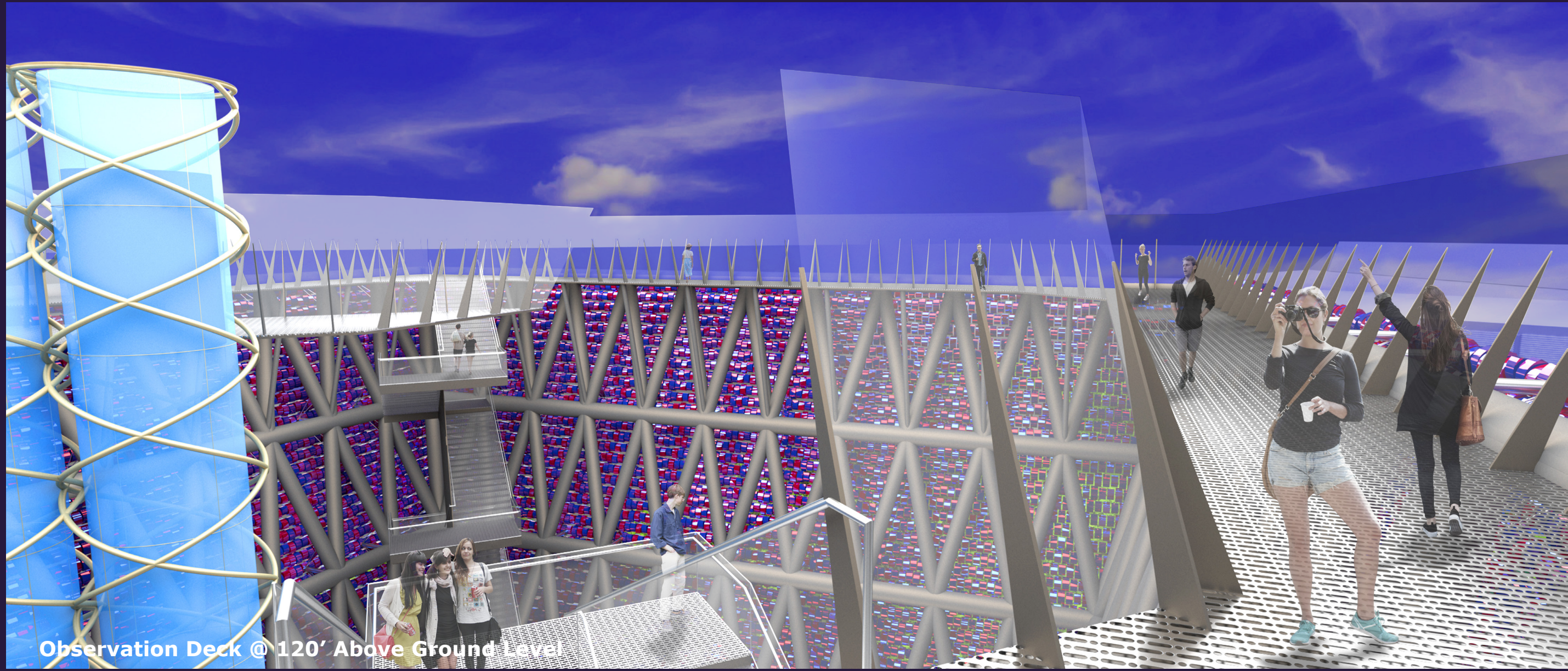
Please Note:

We have chosen to position the monument outside of the areas designated for its location. This was done for the reasons listed above. We have been careful to preserve in place, all the existing art and the Vietnam War Memorial. We believe that enhancements to the plaza that would be part of the monument project will be respectful, improving the context and immediate surroundings of each of these elements. We also think that the trees growing on the site can be relocated successfully to another part of the park area. We would welcome discussion regarding this aspect of our proposal.

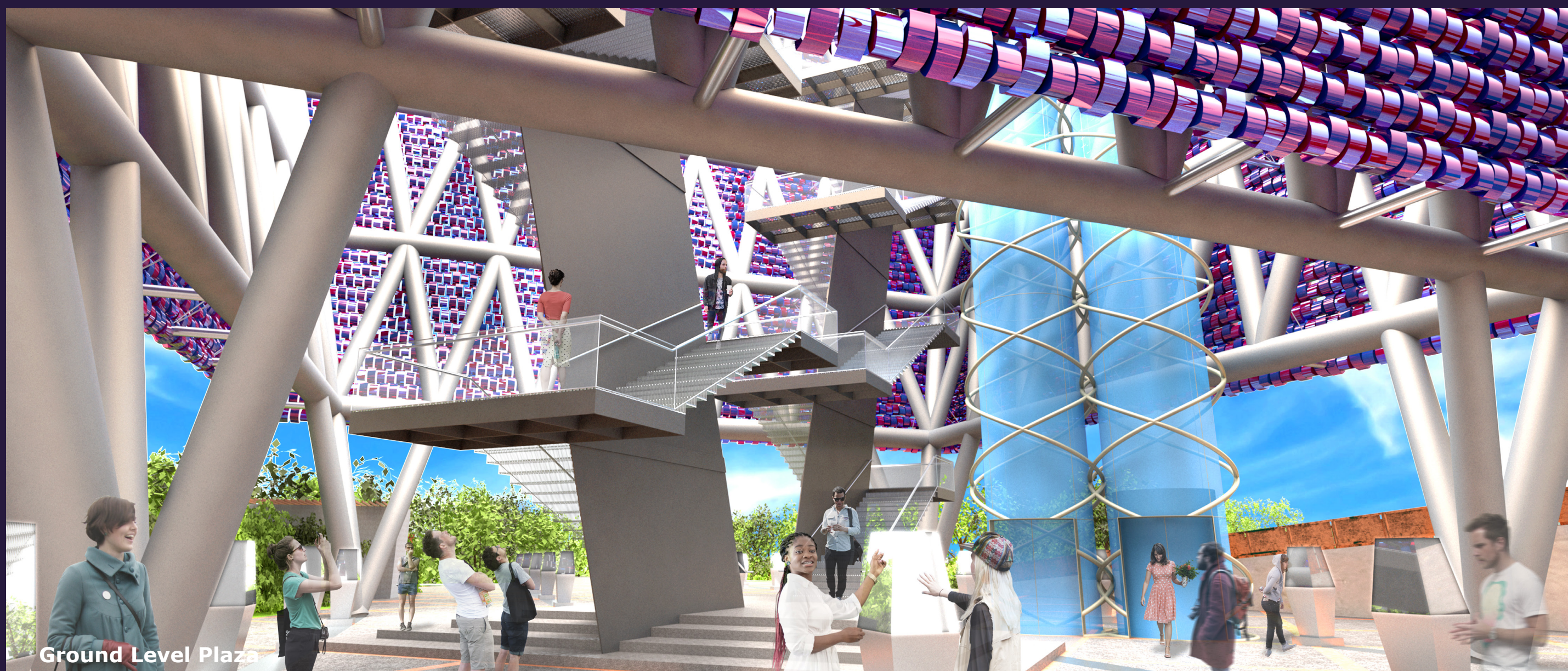
Thank you for your consideration.



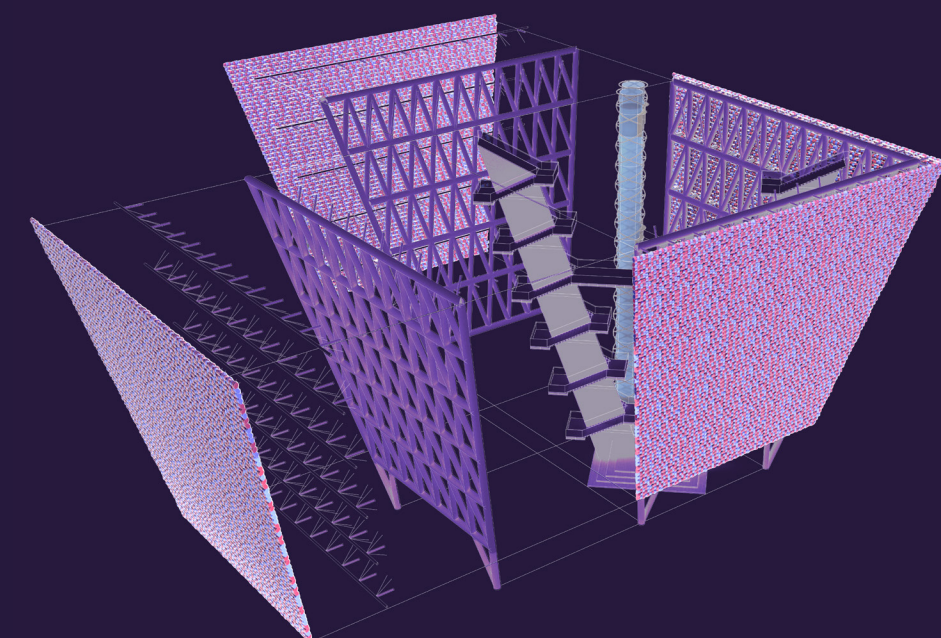
Monument Interior Walkway



Observation Deck @ 120' Above Ground Level



Ground Level Plaza



Essential Components

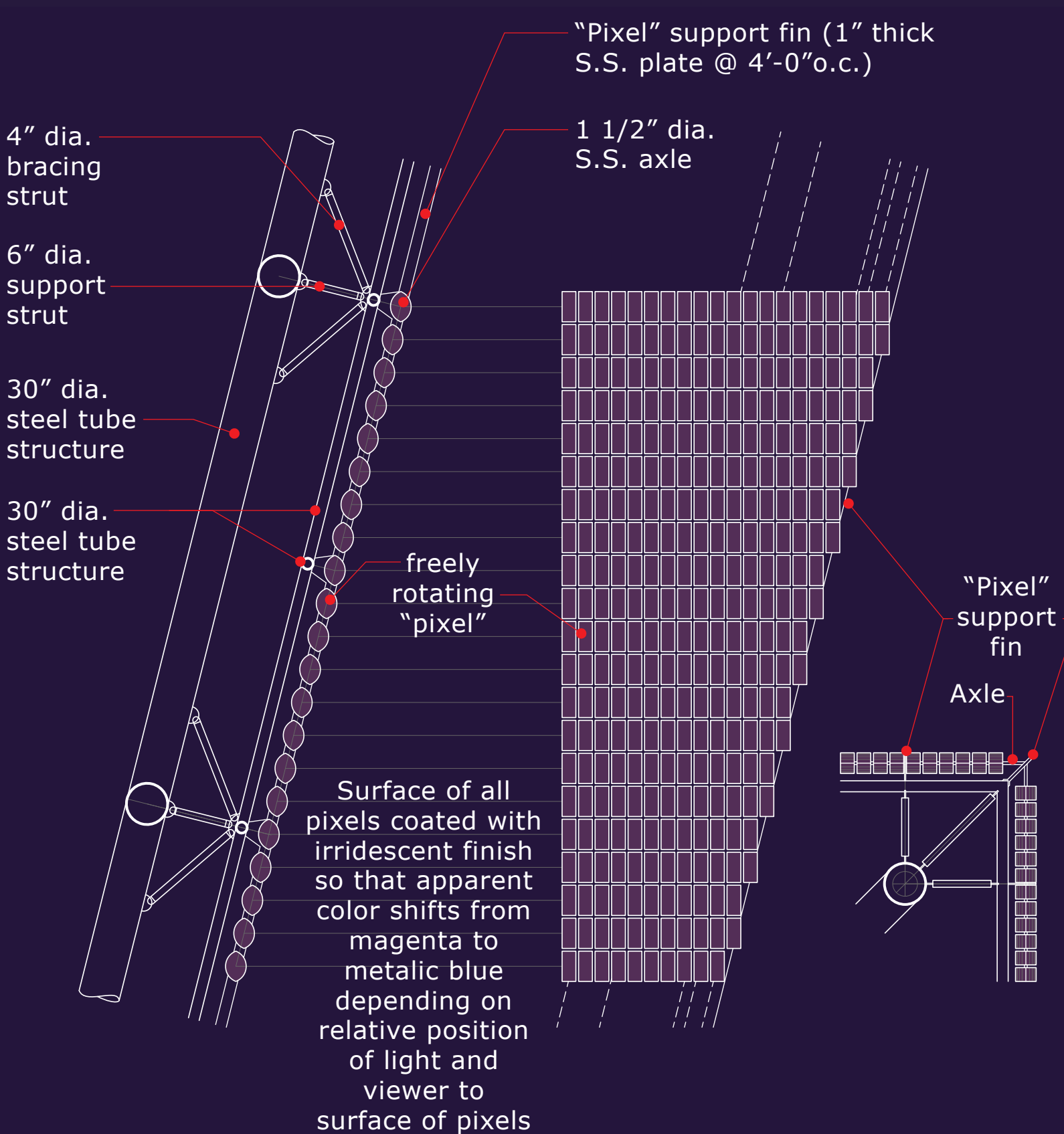


Transporter

Transporters

Arrayed across the ground plane are kiosks linked to similar installations in cities across the globe through video cameras, voice recognition and language translation capabilities, so that each can connect to any other. Monument Plaza becomes a Place in which the possibility of positive human connection is manifest in real time. This is the gift of Silicon Valley. This is the expression of our proposal, at a scale appropriate to the achievement.

Pixel Facade Diagrams



Partial Section

Partial Elevation

Plan @ Corner



View Along Santa Clara St. Looking East