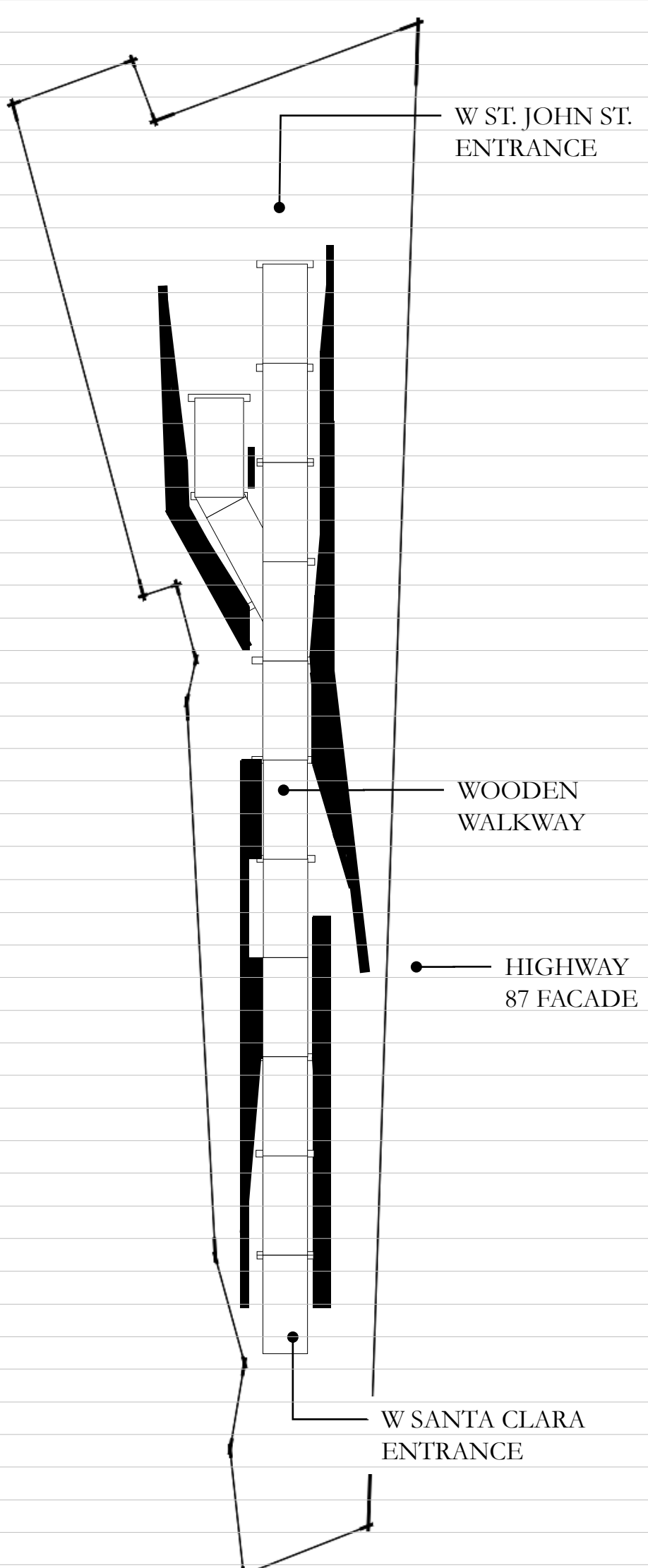
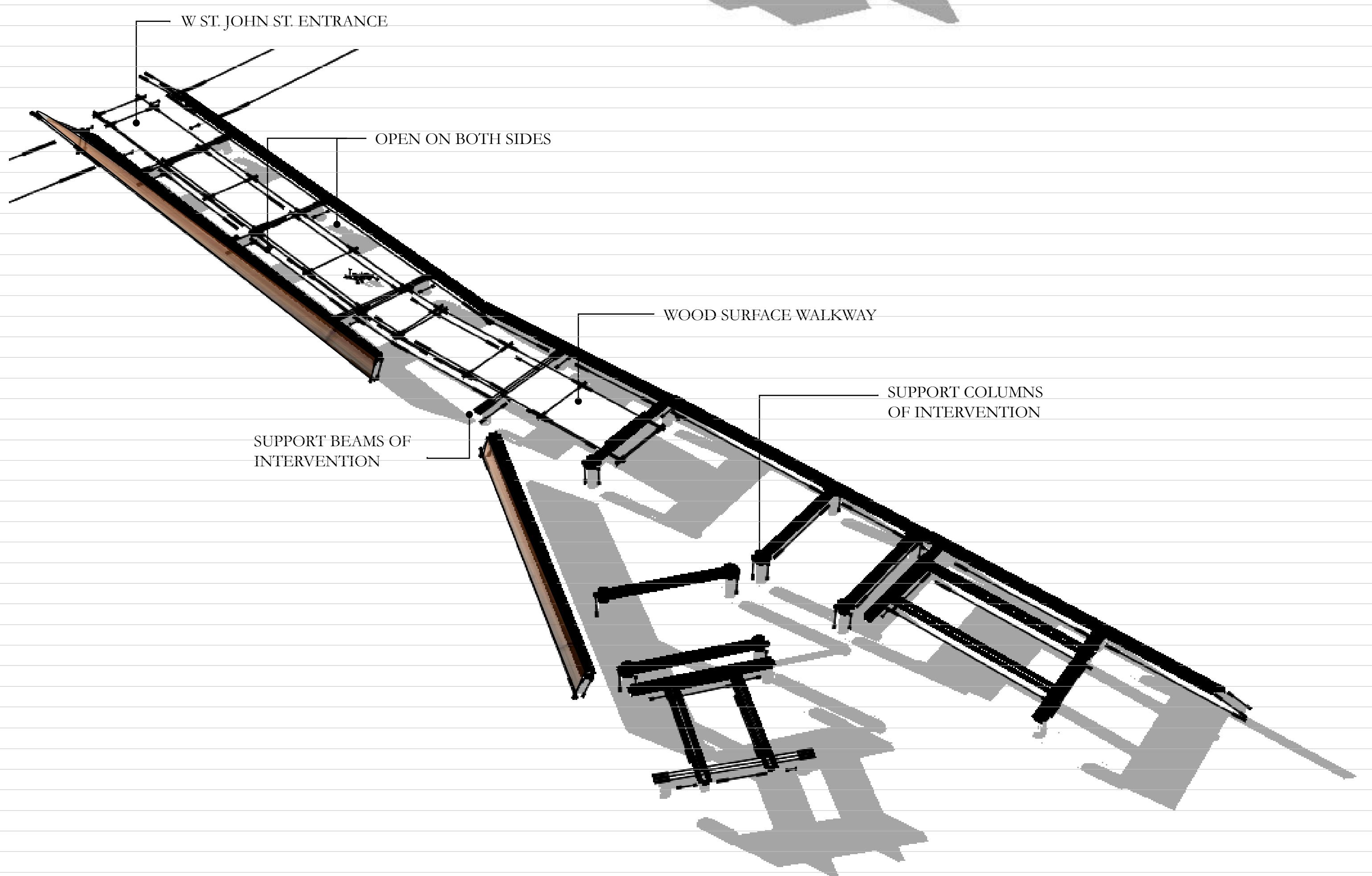
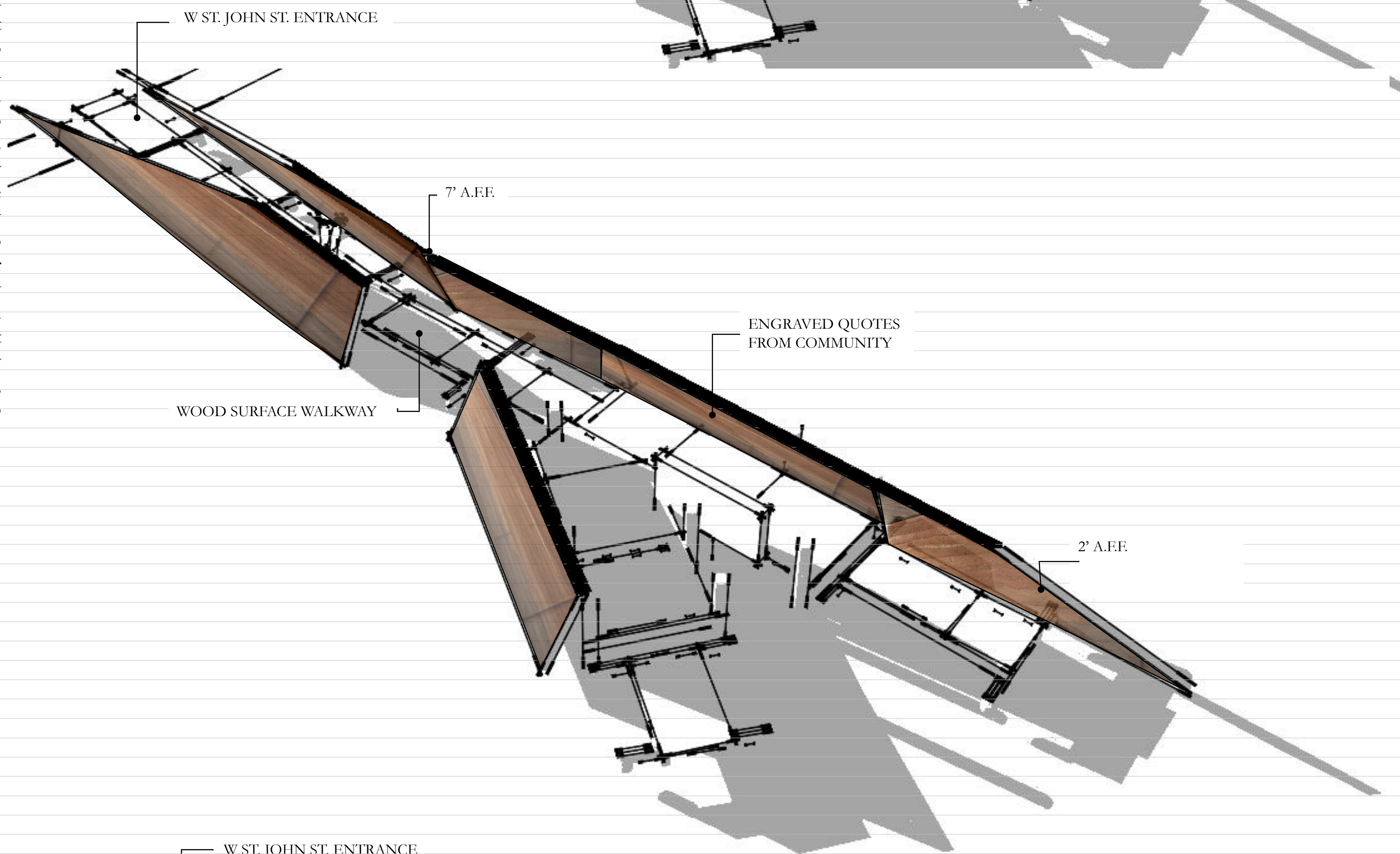
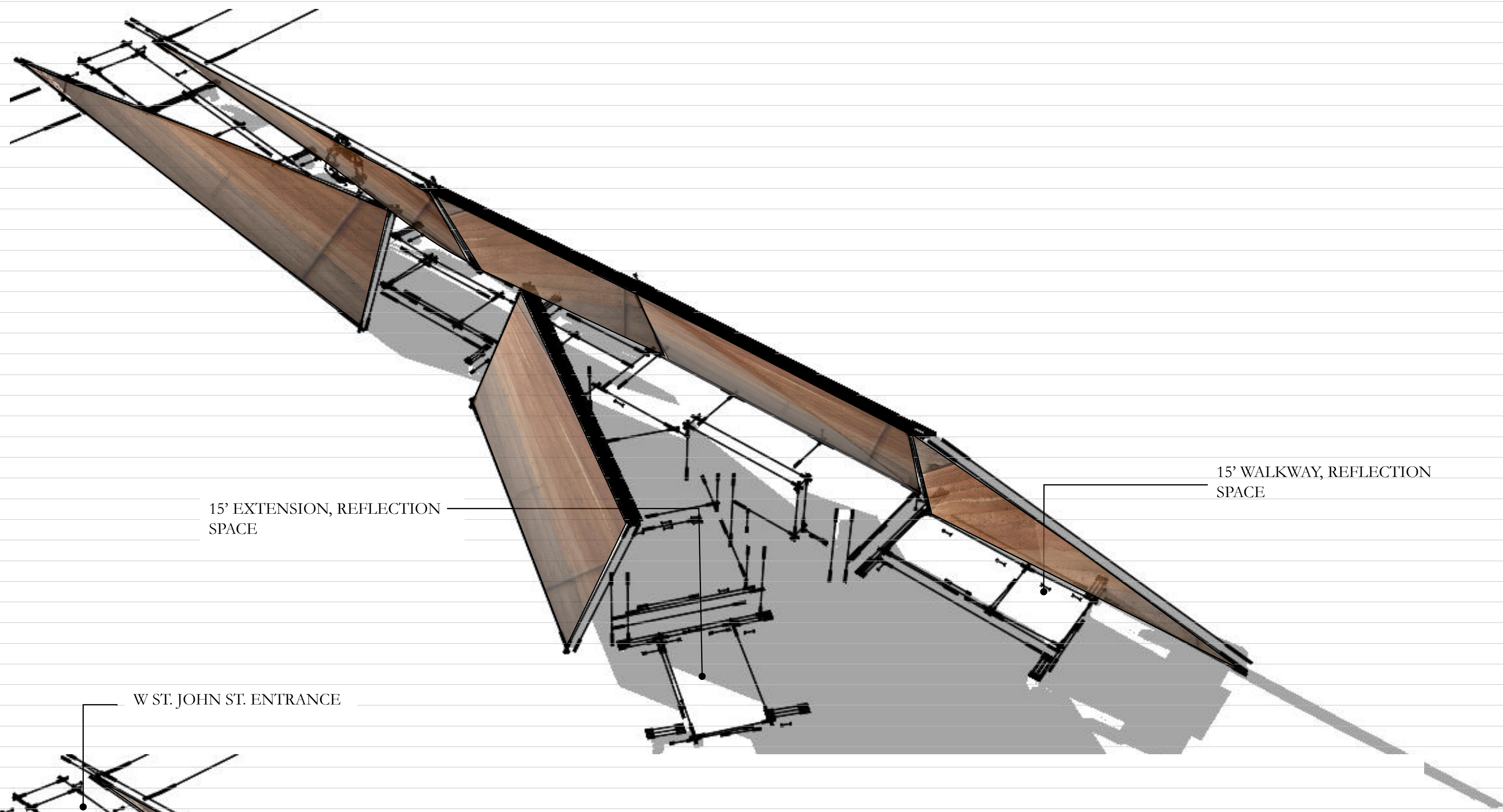


## POWER OF PLACE

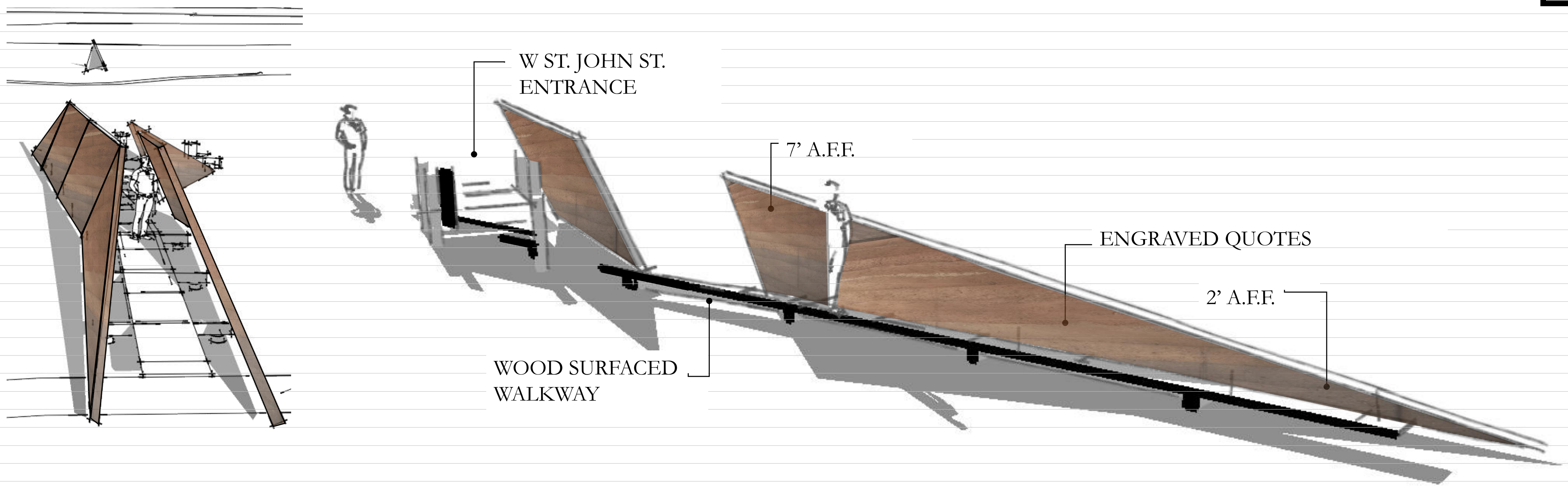
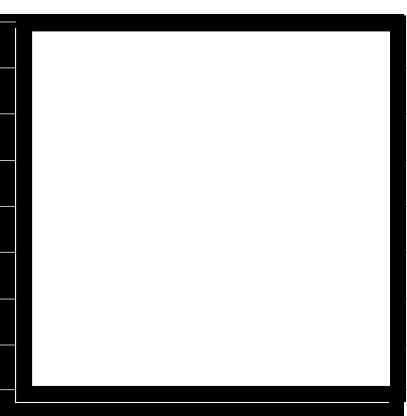
### Project Statement:

An icon is both complicated and simple. It applies to everything but also suggest nothing as that's what gives things it's value. The creation of an iconic place is dependent on its connection to the site. Every site has roots and it is these roots which are critical for the establishment of place. This is the most critical step in making a connection to civic pride and the local community. Those traveling from around the world are then invited to contribute this is moment. For net energy design, the critical component is to make direct use of the site itself. This then speaks to locally sourced materials and furthers the pride of place. Net energy also speaks to a balancing, meaning operations and lifecycle come into play. For lighting, any material that has an embedded light source will contribute to the environmental strategy of light. This will allow for the structure to have a 24-hour presence in the local area. For the height and sound restrictions, my intention is to challenge what is considered iconic. Often times this means something that is tall and makes a visual presence. My intention is to make a visual presence, however, not to rely on scale in order to do this. Materials will be the main factor.

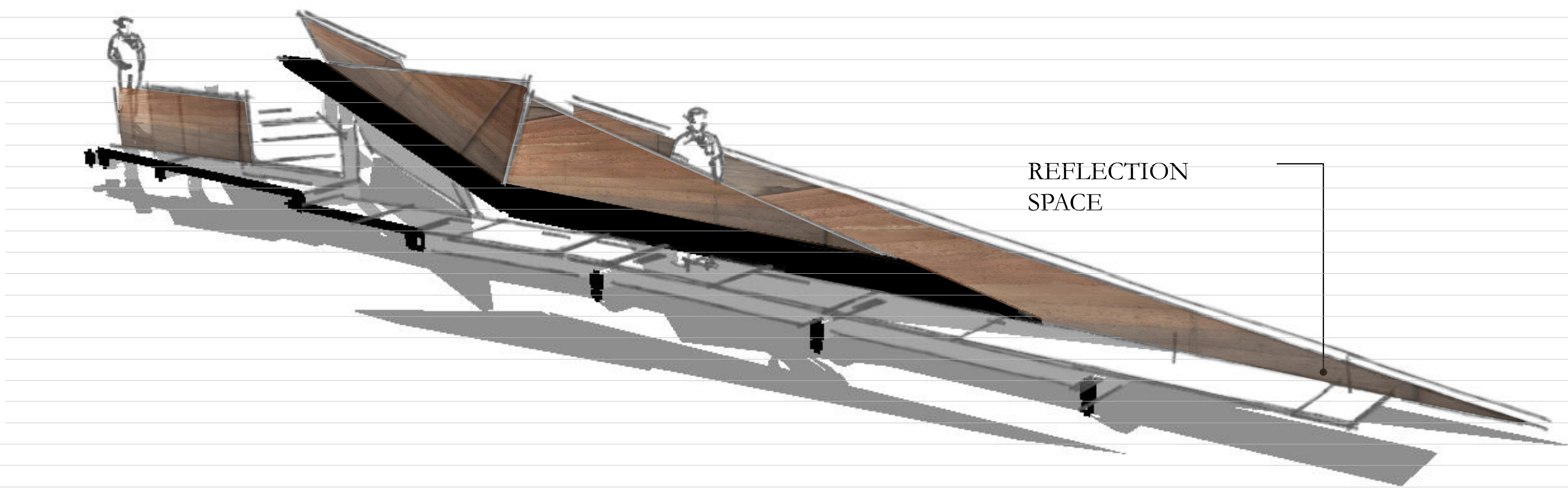


### Longitudinal Section:

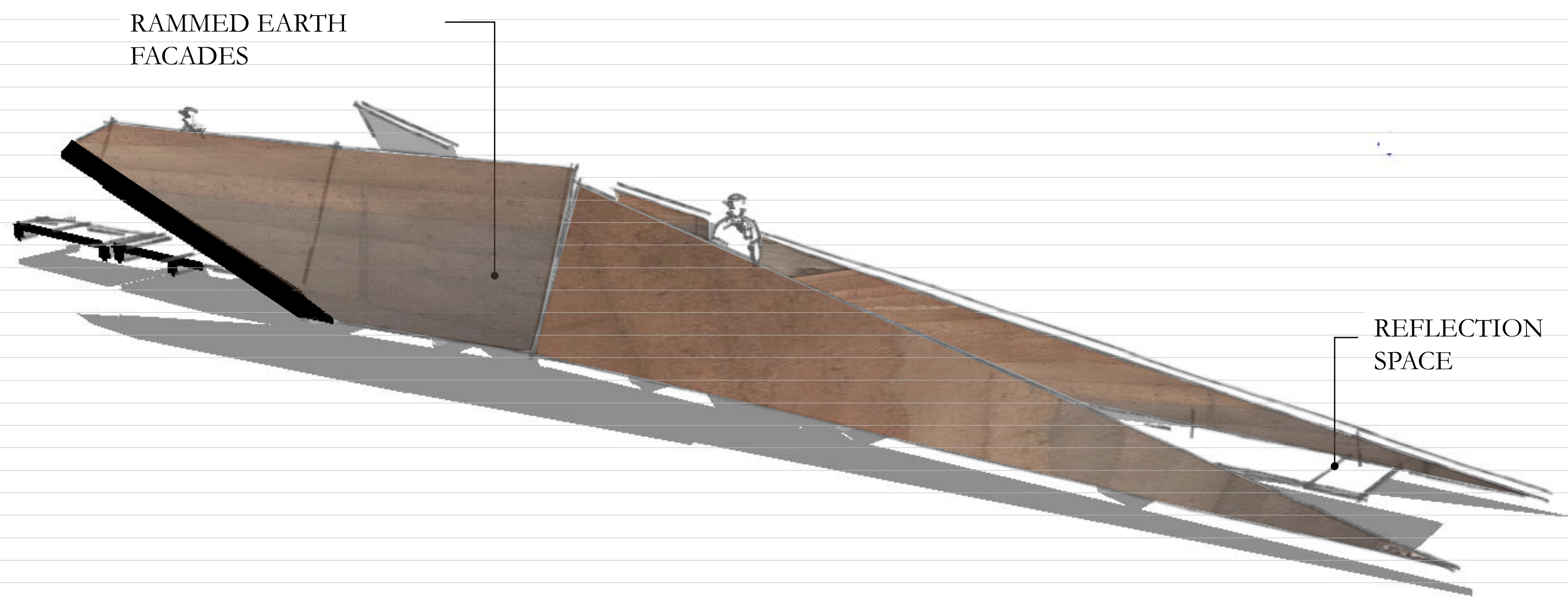
The project focuses on the establishment of place through the use of locally sourced on-site materials. The proposal calls for a 600' structure to be made on the east side site, built of compacted soil from the site for the establishment of community and San Jose pride. Textures and colors will draw visitors into a mostly horizontal scheme, allowing for an inversion of the typical icon, from tall to reasonable, from superhuman scale to human scale. Visitors will be welcomed from two directions, controlling the experience and creating a greater sense of interactions from visitors as well as a visually pleasant view from Highway 87.



**Project Statement:**  
 The intention is to focus on spaces and audiences whose value can be negotiated and are often compromised by the economic and cultural values of our iconic structures and to highlight how often undervalued that can be.



The focus of the proposal is on human interaction and establishing a new sense of place with a 600' horizontal inhabitable sculpture, creating a much needed addition to the existing park.



**Longitudinal Section:**  
 The project focuses on the establishment of place through the use of locally sourced on site materials. The proposal calls for a 600' structure to be made out of soil from the site for the establishment of community and San Jose pride. Textures and colors will draw visitors into a mostly horizontal scheme, allowing for an inversion of the typical icon, from tall to reasonable, from superhuman scale to human scale. Visitors will be welcomed from two directions, controlling the experience and creating a greater sense of interactions from visitors.

