

urban confluence is **community platform**

The brief of this project calls for an urban confluence. We argue that this confluence should grow out of the connections between Silicon Valley and the widely diverse--and often under-represented--communities that make up the city of San Jose. Rather than invest in a structure aimed solely at tourists and international branding, our proposal seeks to create a unique community platform focused on bringing together both local residents and visitors to forge new connections between the neighborhood, the city, and the world.

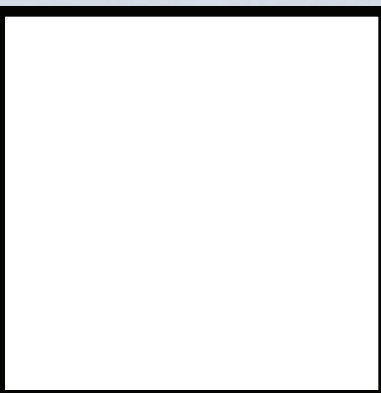
This proposal begins from the premise that the most important function of an urban icon is to anchor, support, and sustain surrounding communities and social diversity. This belief has only been reinforced, with devastating effect, by the events of the past few months. In an age of increasing partisanship and uncertainty, it is all the

more important that our urban icons serve as vital social and ecological infrastructures, providing a key focal point for inclusive communities and engagement that cuts across societal divides.

We mean "community platform" in a very literal sense: this project has been designed as a machine for facilitating community activity and engagement. It consists of a tower of stacked spaces, each uniquely shaped to support different activities and organizations. This stacking allows each program to function independently while also fostering collaboration and informal interactions across different programs. Building systems, from structure to circulation, have been designed to allow maximum flexibility so that the platform can evolve alongside this community process. We have suggested some possibilities for this stack, but the precise composition

should be determined through a rigorous process of community engagement that continues long after construction is complete.

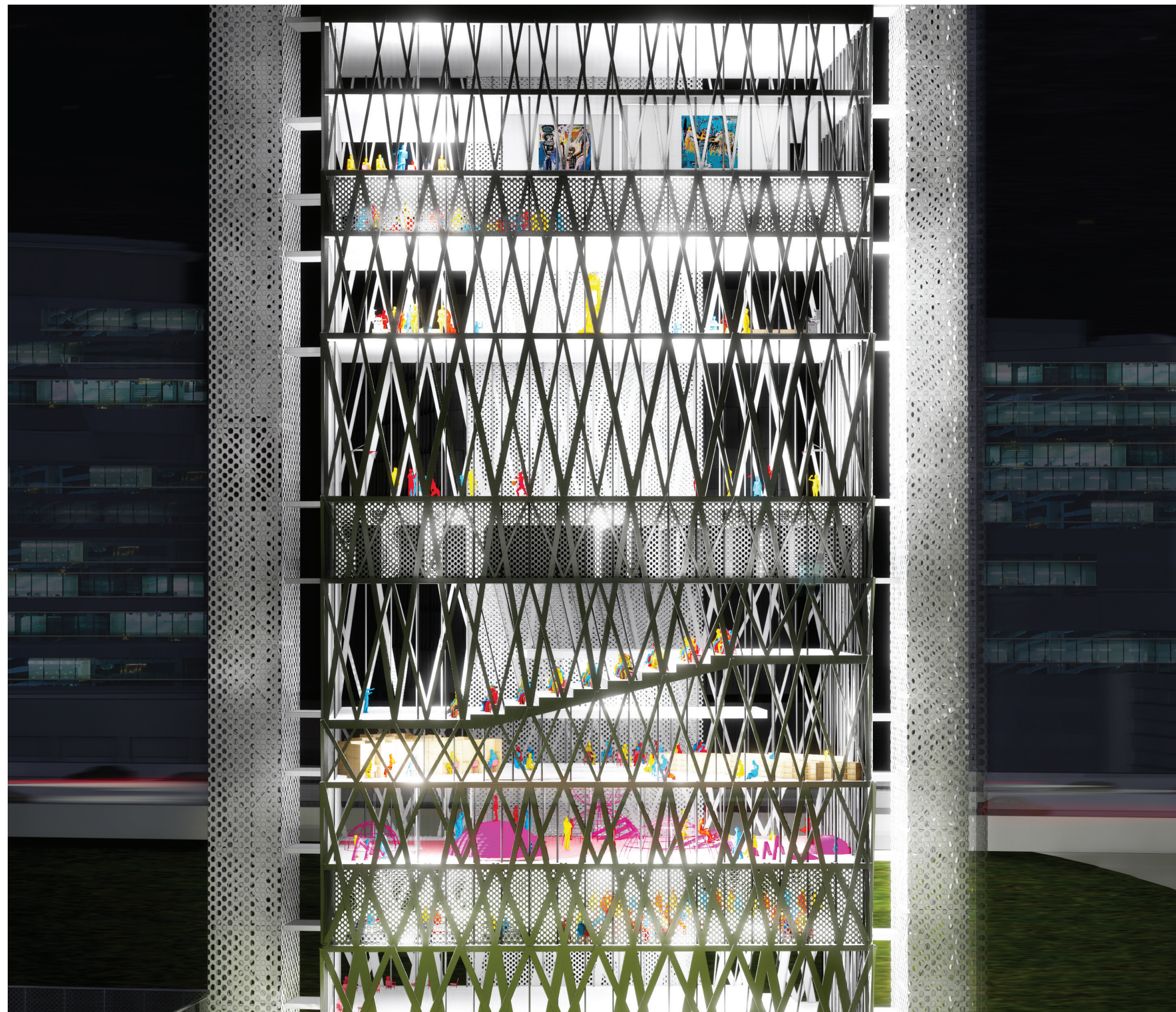
The project is carefully sited in the park to maximize its engagement with this already vital public space and ecological corridor. It is situated at the south-east corner of the site to provide easy pedestrian and vehicular access, ensure high visibility from the surrounding park, roads, and city, and serve as a buffer to freeway noise and pollution for the park. The building works in concert with the park, incorporating net zero strategies, mass timber construction, sensitive lighting, community gardens, and habitat and food sources for pollinator species. Together, they will create a highly active platform for community engagement and serve as a model for a new kind of social infrastructure for San Jose and beyond.





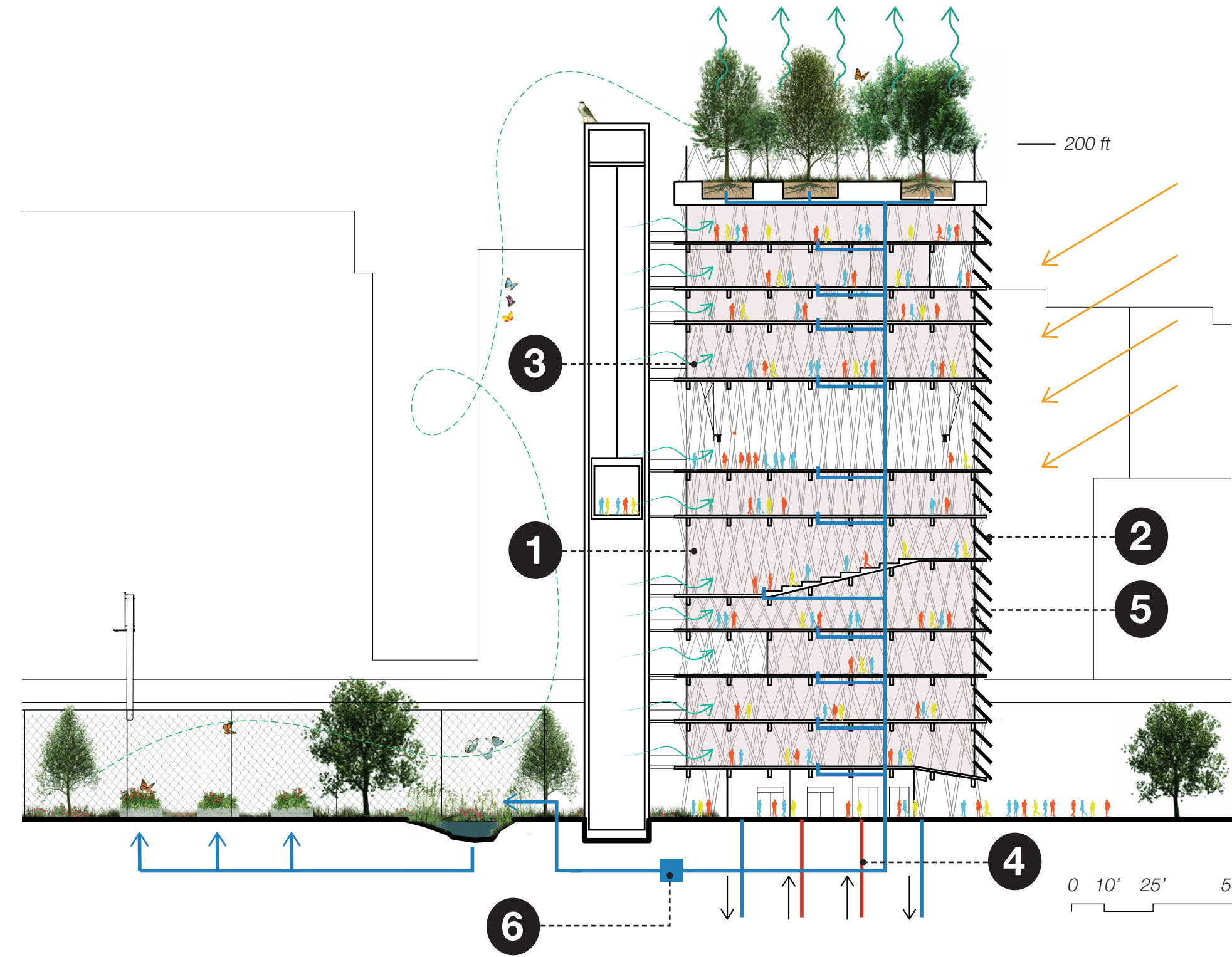
INTERIORS

The interiors are defined by **flexibility, diversity, openness, view, and light**. The 60'x90' floor plates are entirely uninterrupted by structure. This allows maximum flexibility for activities from basketball to large performances, as well as the possibility for floors to be easily adapted over time, adding, changing or removing partition walls. Every floor provides a unique space for activity and a unique eye on the growing, changing city that surrounds it.



LIGHTING

The building is **transparent, glowing lattice**, inside the activity is visible. The primary lighting will be drawing from the activity within, a jewel box of community engagement. In addition, strategic downlighting will be used to illuminate the lattice structure, lending this structure an **iconic presence** in the San Jose skyline.



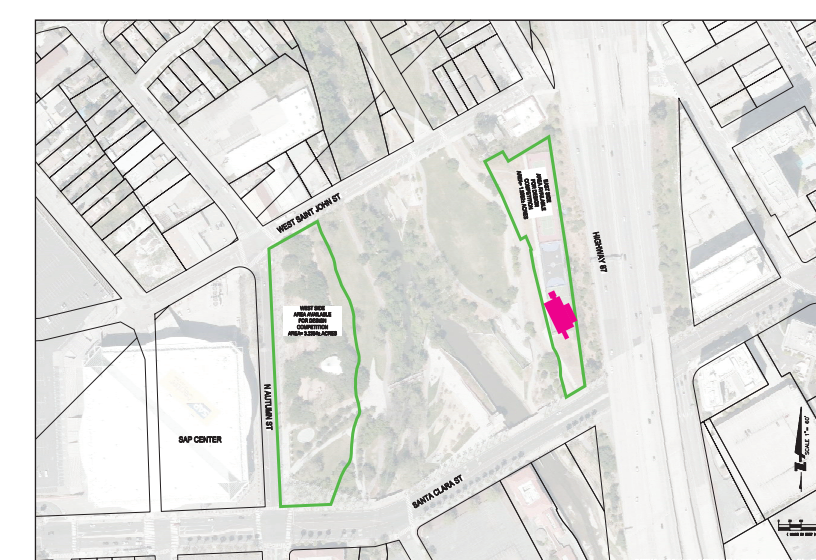
NET ZERO STRATEGIES

This design integrates building systems, landscape, and community engagement in a **holistic vision** for achieving net zero. Building systems include: 1) mass timber construction; 2) solar energy generation; 3) natural ventilation; 4) geothermal heating and cooling system; and 6) grey water reclamation; as well as supporting community gardens, pollinator habitats, and outreach programs in urban ecology and environmental issues.



LEGEND

- A** COMMUNITY PLATFORM TOWER
- B** PLAZA
- C** BIOSWALE
- D** COMMUNITY GARDEN
- E** BUTTERFLY GARDEN
- F** ORCHARD / BOSQUE
- G** DOG PARK
- H** TENNIS COURTS



LANDSCAPE

The landscape is **activity-based**, extending and engaging the community platform with the park. The building and the landscape are integrated: water from the sinks is cleaned and used to water the gardens, food grown in the garden is used in the demonstration kitchen; pollinator species that feed in the butterfly garden can nest in the vertical forest.



PROGRAM

Each floor is designed to provide a unique space for activity, aimed at engaging the broadest possible community. Program is divided into **public venues**, which draw the general public and tourists, and **activity spaces**, where more focused events, classes, and activities can occur. All are supported by an **"extended stack"**, which can store and deliver a wide range of materials supporting all of the various activities in the platform.

VERTICAL FOREST

At the top of the tower, an extension of the park 200' above, large outdoor view deck with mature native trees and other plantings. This provides a destination space for tourists and a place to relax for locals, with incredible views of the city, park and surrounding landscape.

INNOVATION HUB

This space supports technology related education, community-driven design, collaborative work, and start-ups, leveraging the unparalleled expertise of Silicon Valley and nearby universities to create a world-class innovation center.

URBAN LIVING ROOM

A public venue supporting a variety of gathering and exhibition, including possible gallery spaces, cafe, and informal gathering spaces highlighting the living history of this place and people.

PRACTICE ROOMS

A flexible floor with reconfigurable walls that allows a variety of reconfigurable education settings, from rehearsal rooms, small group learning classrooms, dance recital spaces, and art studios, supporting a wide range of education and activities, from music lessons, performance arts, to cultural exchange.

MAKER SPACE

A workspace for teaching and making, from DIY to advanced digital fabrication. This space supports sculpture, fashion, set design, model making, industrial design, and physical computing workshops. Includes a wood shop, a painting booth and advanced digital fabrication equipment.

SKY COURT

A flexible, outdoor court that supports sports activities and rec leagues, from basketball to aerobics.

EXPANDED STACK

Expanding the possibilities of the conventional library stacks - this floor is a flexible storage space for a wide range of objects for use by the different organizations: from books, musical instruments, digital hardware, sports equipment, or art supplies. A large (15'x20') elevator connects the stack to the rest of the building.

AUDITORIUM

A highly visible space for the community to gather in large numbers, capable of hosting public lectures, performances, community events, and classes.

BRANCH LIBRARY

A home for a San Jose Public Library branch library, one of the most vital social infrastructures in the United States. Supporting the myriad uses that happen at the library everyday, and providing a branch library for the rapidly developing neighborhood.

KIDS SPACE

An activity zone for younger children, including an education center, jungle gym, art space, and special needs spaces.

HUMAN SERVICES

A space dedicated to a diverse array of human services and organizations, including homeless services, health and social services, and job placement. Includes offices and meeting rooms, and allows multiple services to be housed under the same roof.

COMMUNITY KITCHEN

This level is focused on food education and outreach, including supporting farm-to-table initiatives, combating food deserts, and supporting cooking literacy. The includes demonstration kitchens, a vertical hydroponic garden lab, and support spaces.

LOBBY + CAFE

Entry point and connection to the park. Includes a small cafe with access to outdoor seating in the surrounding plaza.