

LIGHT CLOUD

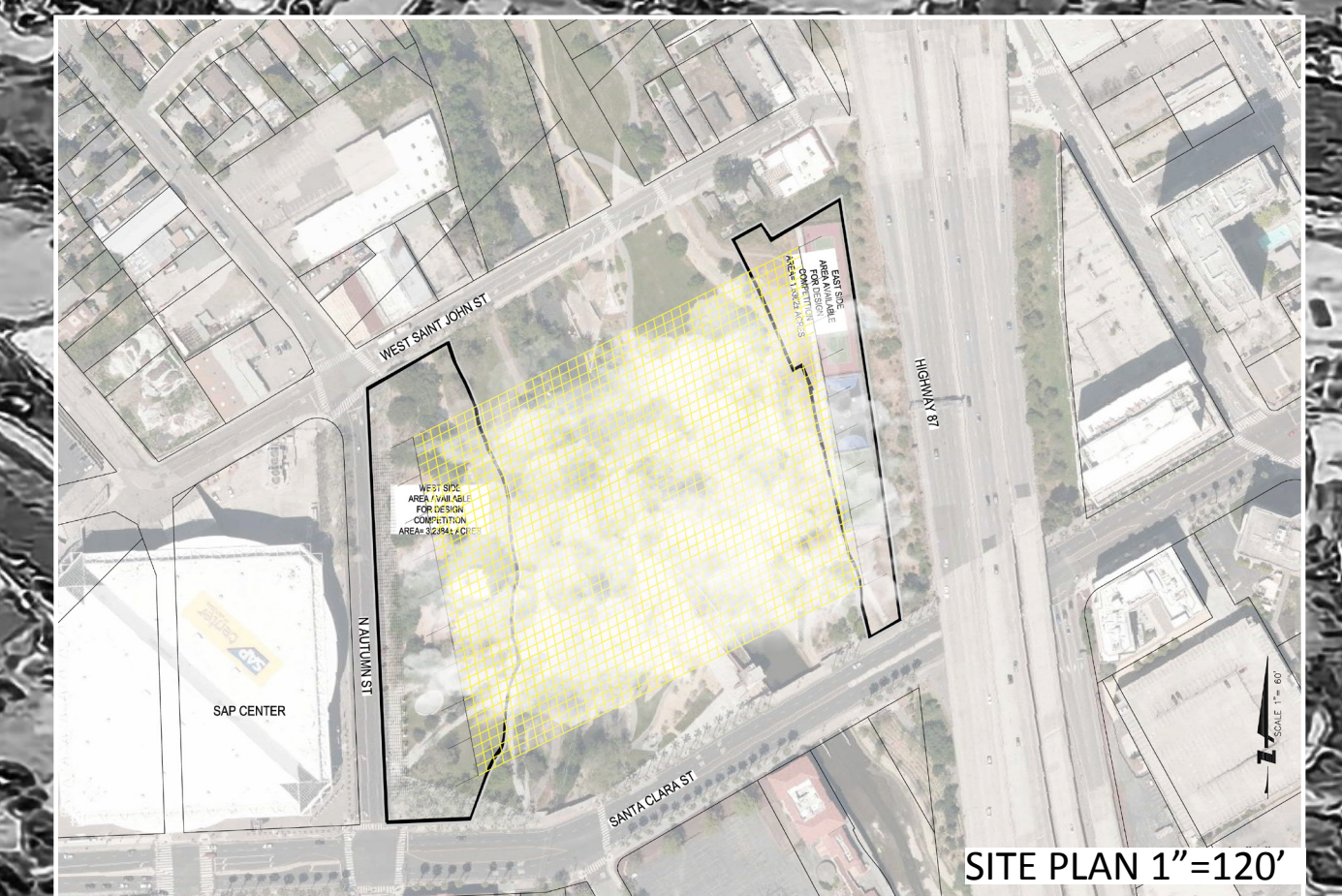
Silicon Valley

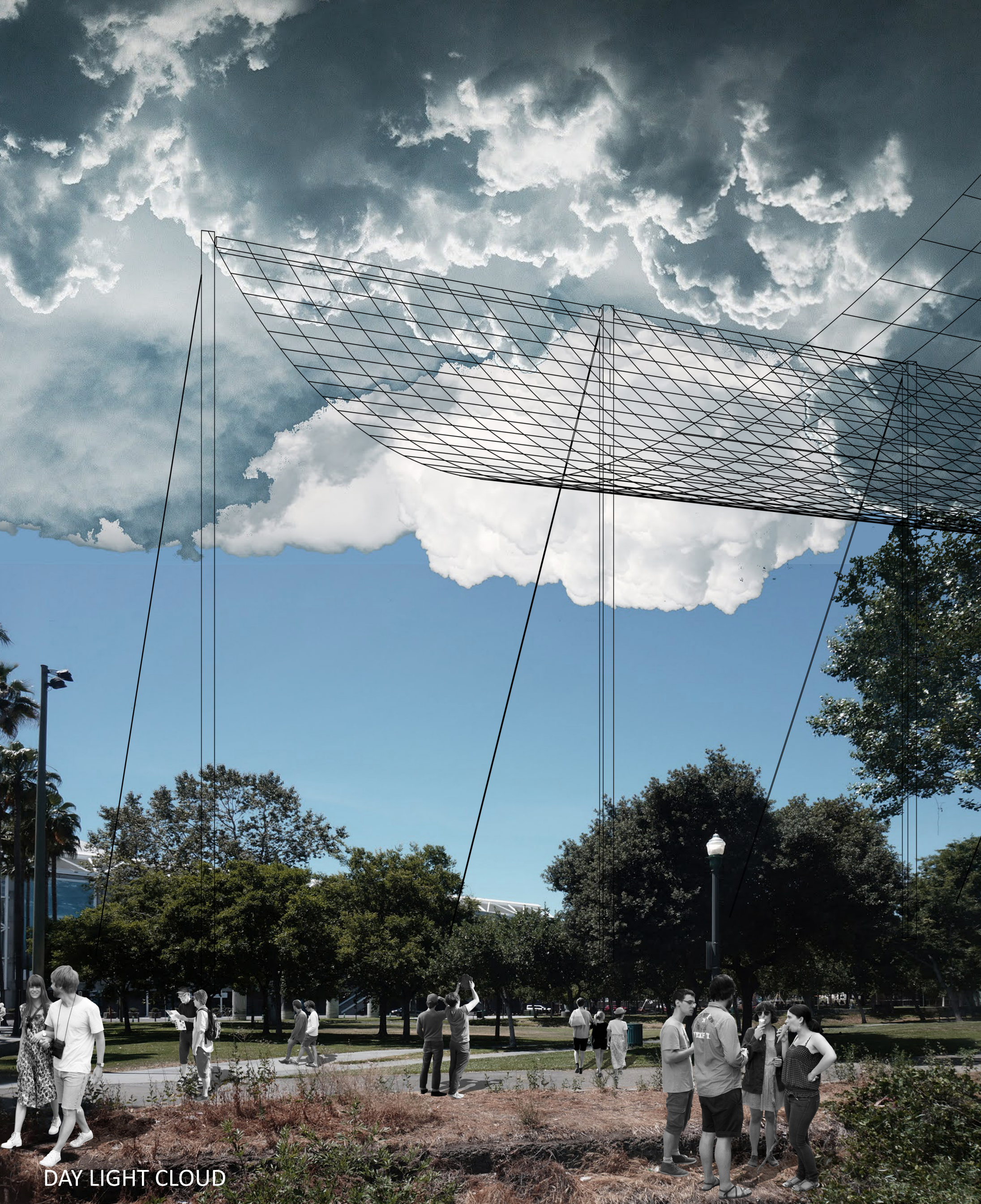
The Light Cloud exists as elusive diffusion of luminous evanescence. Formless, it teases the brain at the perceptual gap between incipient becoming and dissolution into nothingness. As a 21st century icon, it doesn't impose itself on consciousness, rather preferring to offer subjective light impressions high above the Guadalupe River Park.

The Light Cloud is a climate-correcting machine, shading the park and cooling the air by evaporation in the sweltering days of global warming. In the evening, the Light Cloud glows as gigantic, amorphous urban luminaire, extending the park's use at night and shooting light into the sky, a far-traveling universal invitation to visit.

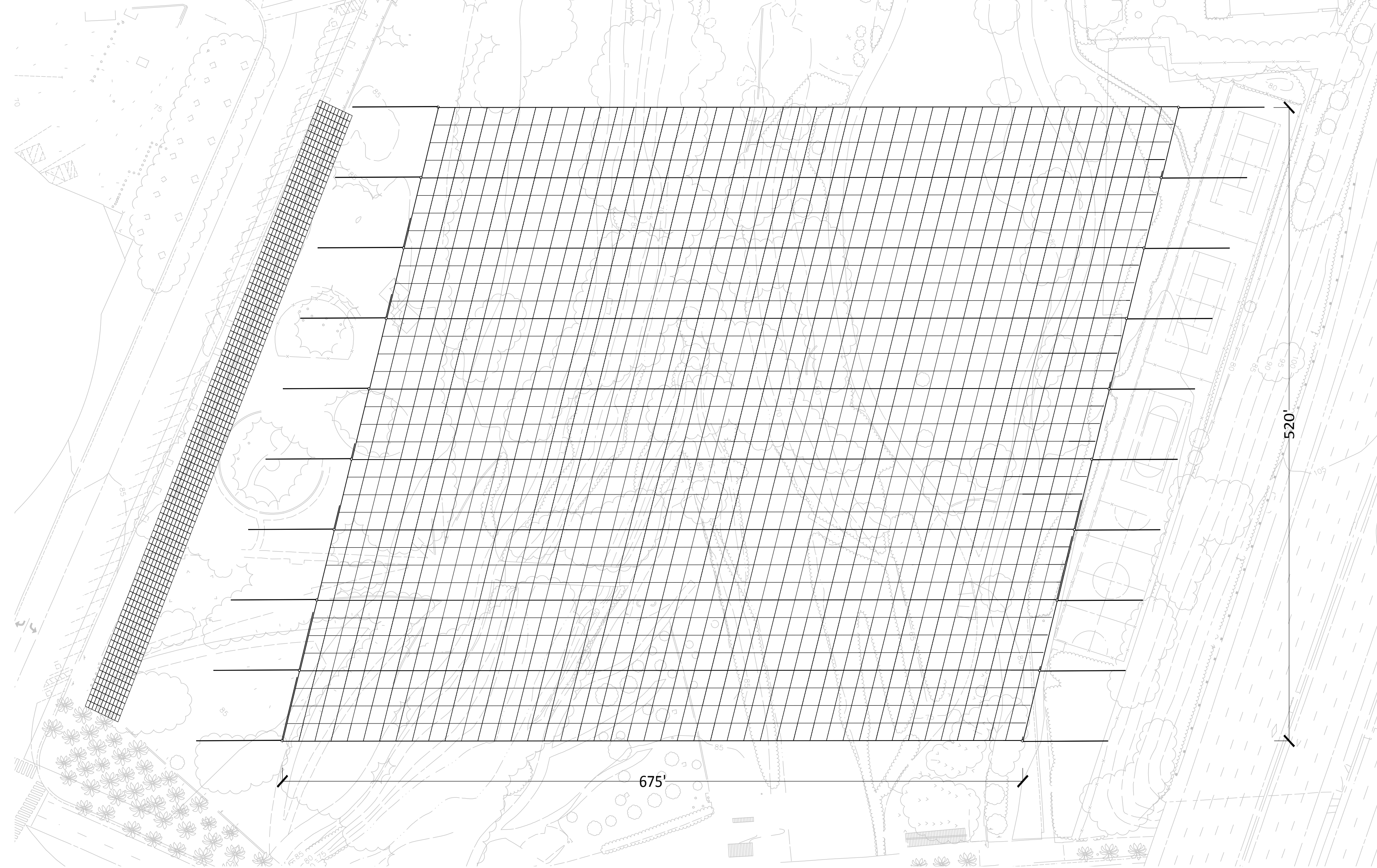
The Light Cloud does not impose meaning through form, it offers instead an expression of civic cohesion grounded on personal freedom of perception while offering the real advantages of climate correction and unforgettable beauty by day and by night.

1,000 atomized-water nozzles are held above the ground on a grid of $\phi 2"$ stainless-steel cables also carrying LED side-emitting fiber-optics. Spanning 800' across the site, the slender catenary is supported by 80' tall, $\phi 20"$ steel pipe columns on the east and west edges. The water is pumped from a 10,000-gallon underground cistern by four 30HP pumps via $\frac{1}{2}"$ stainless-steel pipes reaching the suspended array of nozzles. The pumps are powered by 1,000 photovoltaic panels which make The Light Cloud a perfect net-zero project. The photovoltaic panels, arranged 18' above the ground, form a loggia on the west side of the site providing a place of refuge in bad weather and the perfect site for a street food market and for social urban interaction at the foot of The San Jose Light Cloud

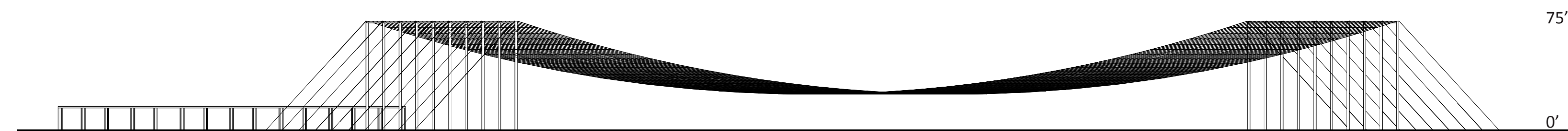




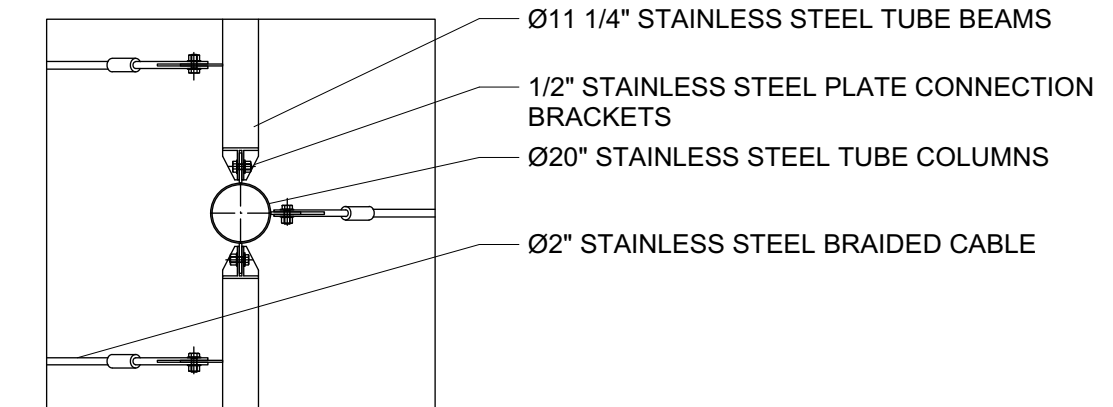
DAY LIGHT CLOUD



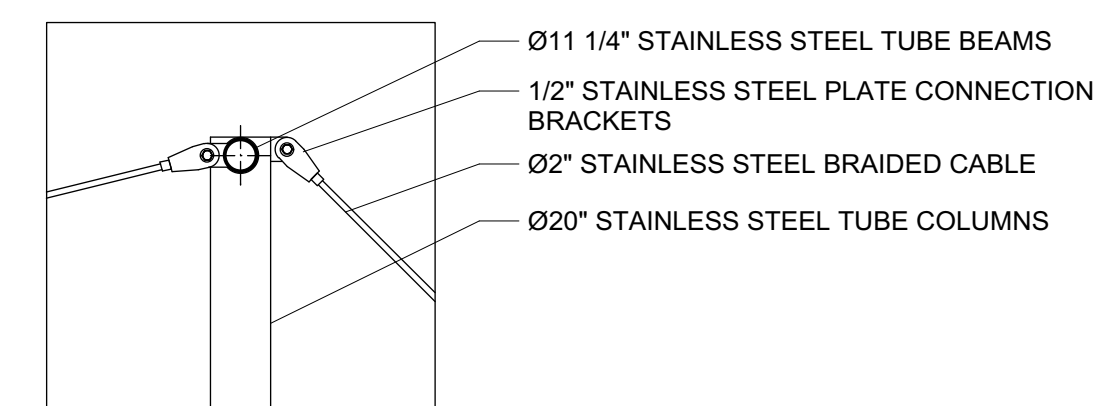
PLAN 1/64"=1'-0"



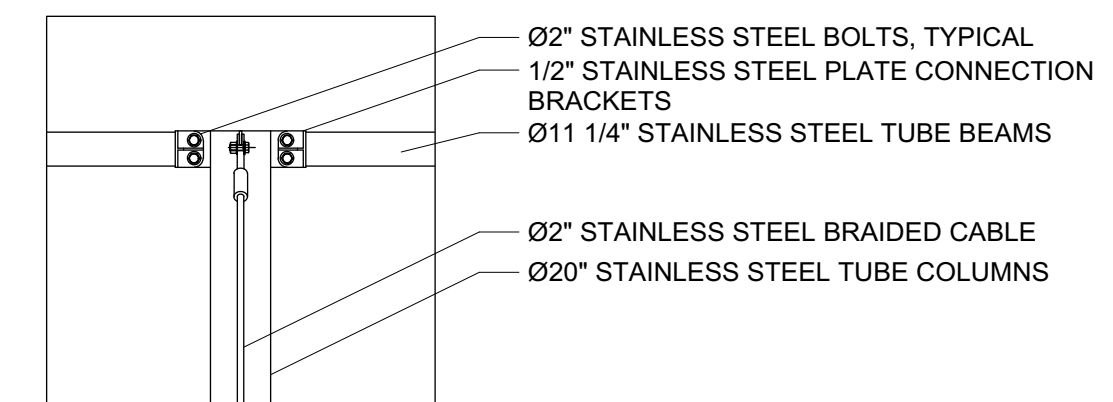
ELEVATION 1/64"=1'-0"



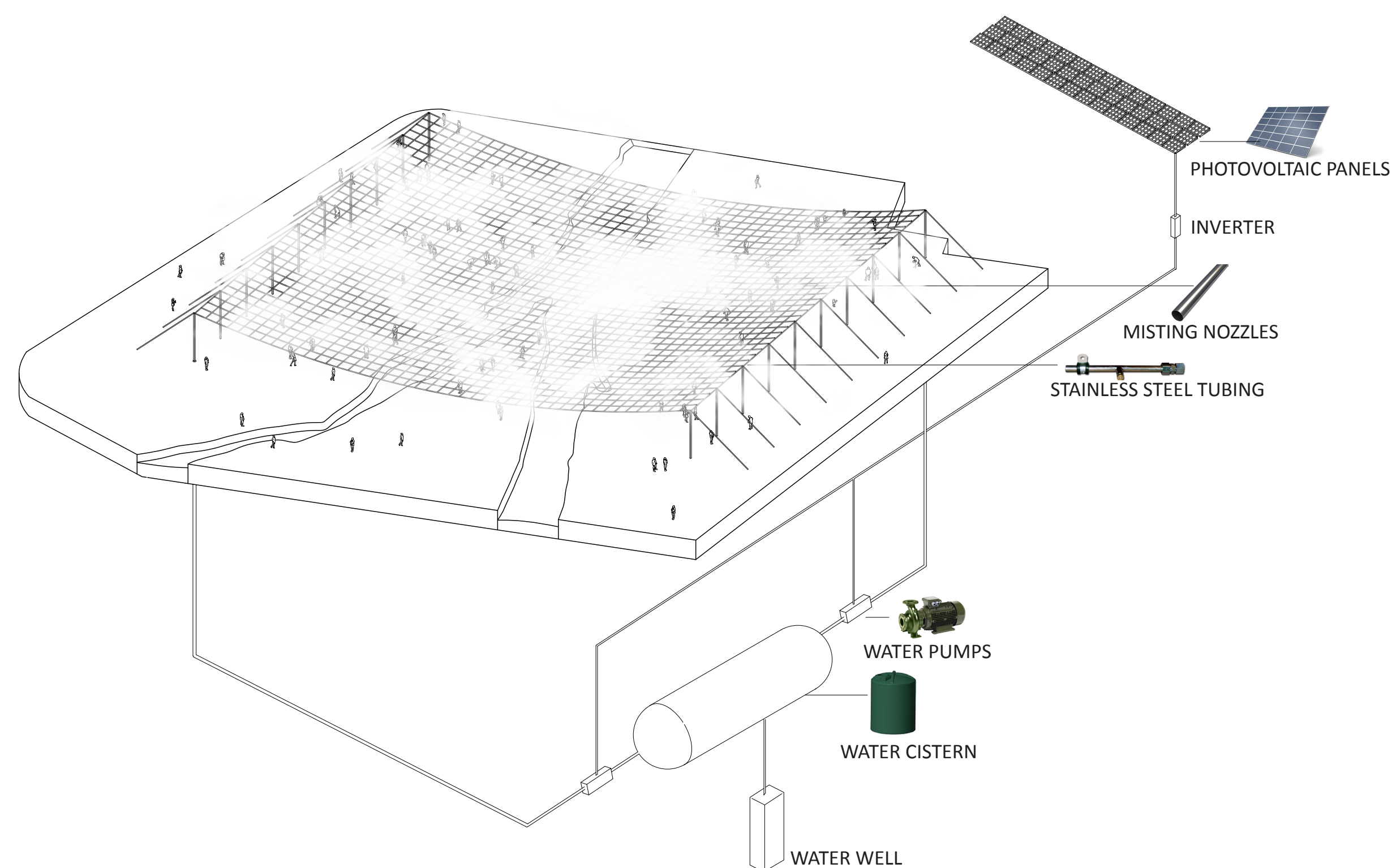
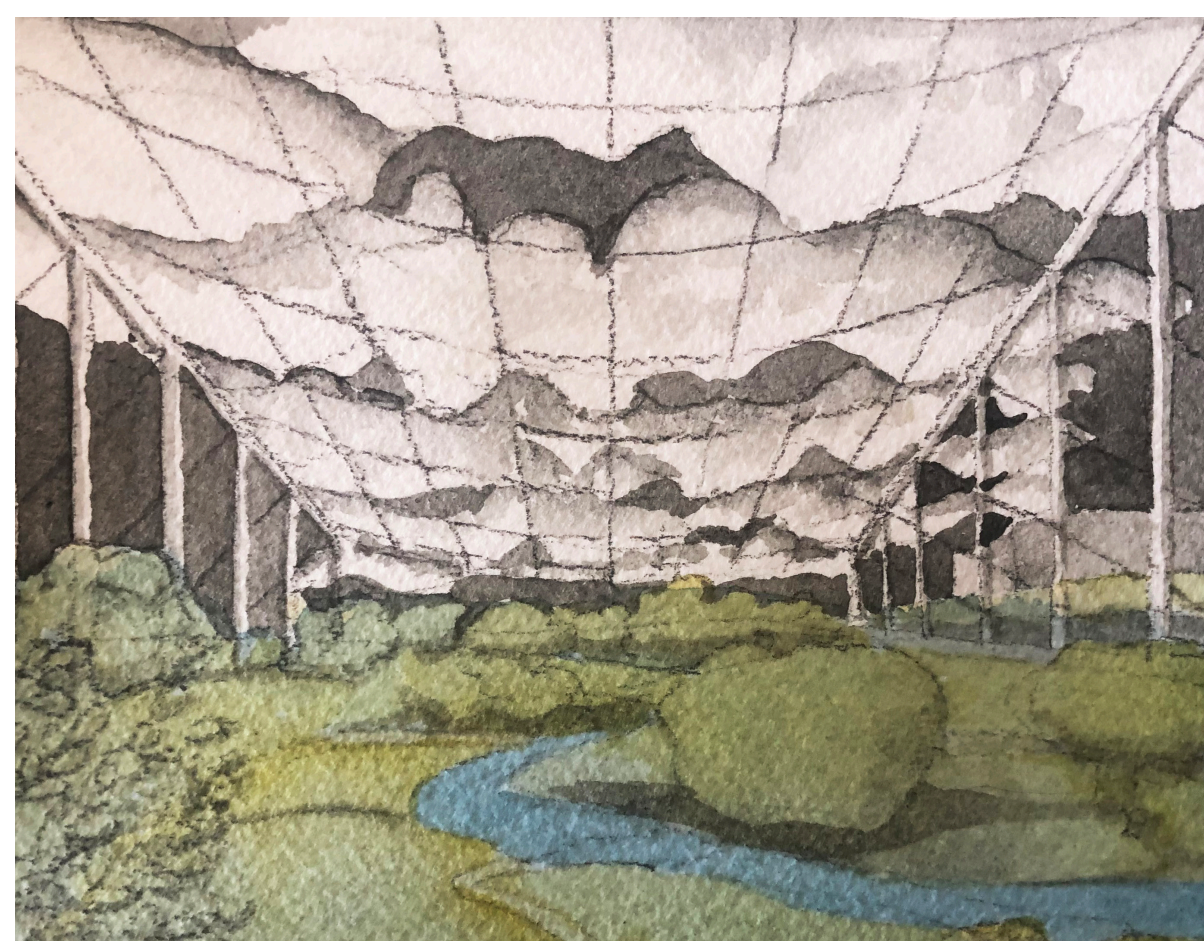
PLAN DETAIL 3/16"=1'-0"



SECTION DETAIL 3/16"=1'-0"



ELEVATION DETAIL 3/16"=1'-0"



MECHANICAL SYSTEM OF THE LIGHT CLOUD MACHINE



NIGHT LIGHT CLOUD