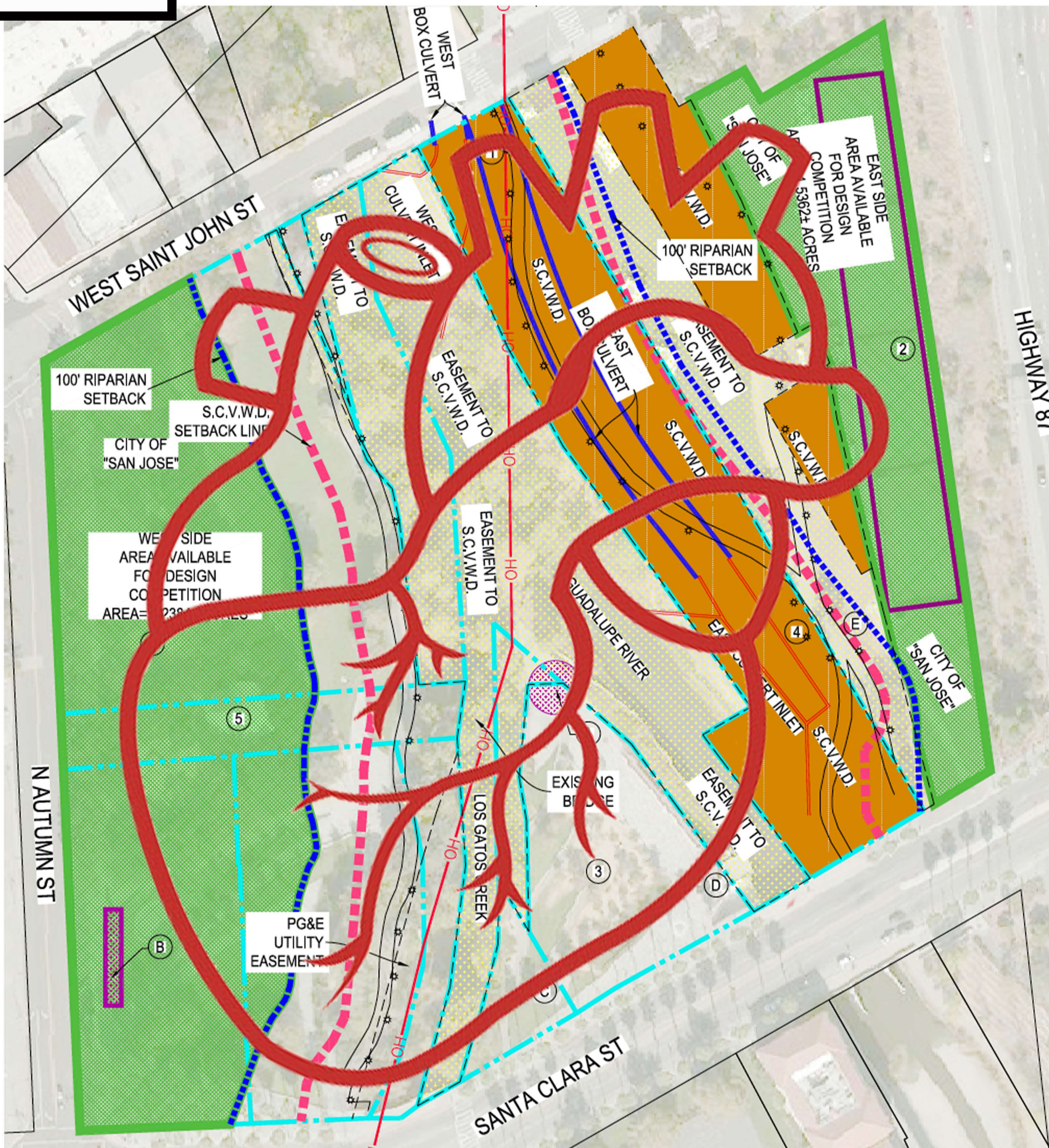


THE HEART OF THE VALLEY



Seen from above and entered through its many arteries,
"The Heart of the Valley" is the visual heart of the Valley of Heart's Delight.

Glowing intertwined pathways trace the veins and outline of a human heart.
Constructed from sustainable materials and powered by renewable energy sources
the heart is brought to life by the living things that traverse, inhabit and incubate
its winding paths and arteries.

Interactive and ever changing displays through the park take visitors on a walk through time
... from the past ...through the presentinto the future....
to discover the heart and soul of San Jose.

The Heart at the Center of San Jose

Uniting the two sides of the Guadalupe river,
The Heart of The Valley unites San Jose's culture
of innovative ideas with
its rich natural history.

Seen from above (by plane or on Google maps) the park's pathways
and bridges form the outline of a human heart.

On earth, the park's two separate areas are the heart's two major arteries.
They connect through pathways that guide
visitors through the history of San Jose while surrounding them
with the native flora that makes San Jose so rich in natural beauty.

These pathways will intertwined with each other creating
an outline of a human heart.

The heart can only be seen from the air when flying in or out of San Jose
airport or from the upper floors from the buildings that will surround the park.

By day the pathway's surfaces will be colored in rich natural tones that
highlight the natural beauty of the park. At night their
phosphorescent glow will make them shimmer and be
visible to park visitors and people looking down at the park from planes and nearby buildings.
Built with advanced design and engineering technologies, the embedded strands of
light and interactive displays are powered by renewable energy
and activated by living interactions.

Winding its way through the park like a vein, an endless communal table
with seating will invite residents and visitors to rest, eat, gather and enjoy the park.
Along the way arteries of fountains will supply fresh drinking water, orchards will
bear fruit to eat and native plantings will tell a story of our shared planet and it's natural resources.

Utilizing the power of data and spirit of innovation that pervades San Jose,
sensors will be used to track changes to the shells of the bridges and structures over
time and monitor the physical response to park traffic for the plants and wild animals such as
the owls, bats, birds and insects that are so important to the harmony and ecology of the area.

A Place to
Play
Feast
Learn
Gather
Forage

A Park of
Inclusion
History
Preservation
Nature
Ecology
Technology
Introspection
and
Play

Made of
Paths
Bridges
Tunnels
Plants
Water
Gardens

Sculptures
Wood
and
Sunlight