

# FoG

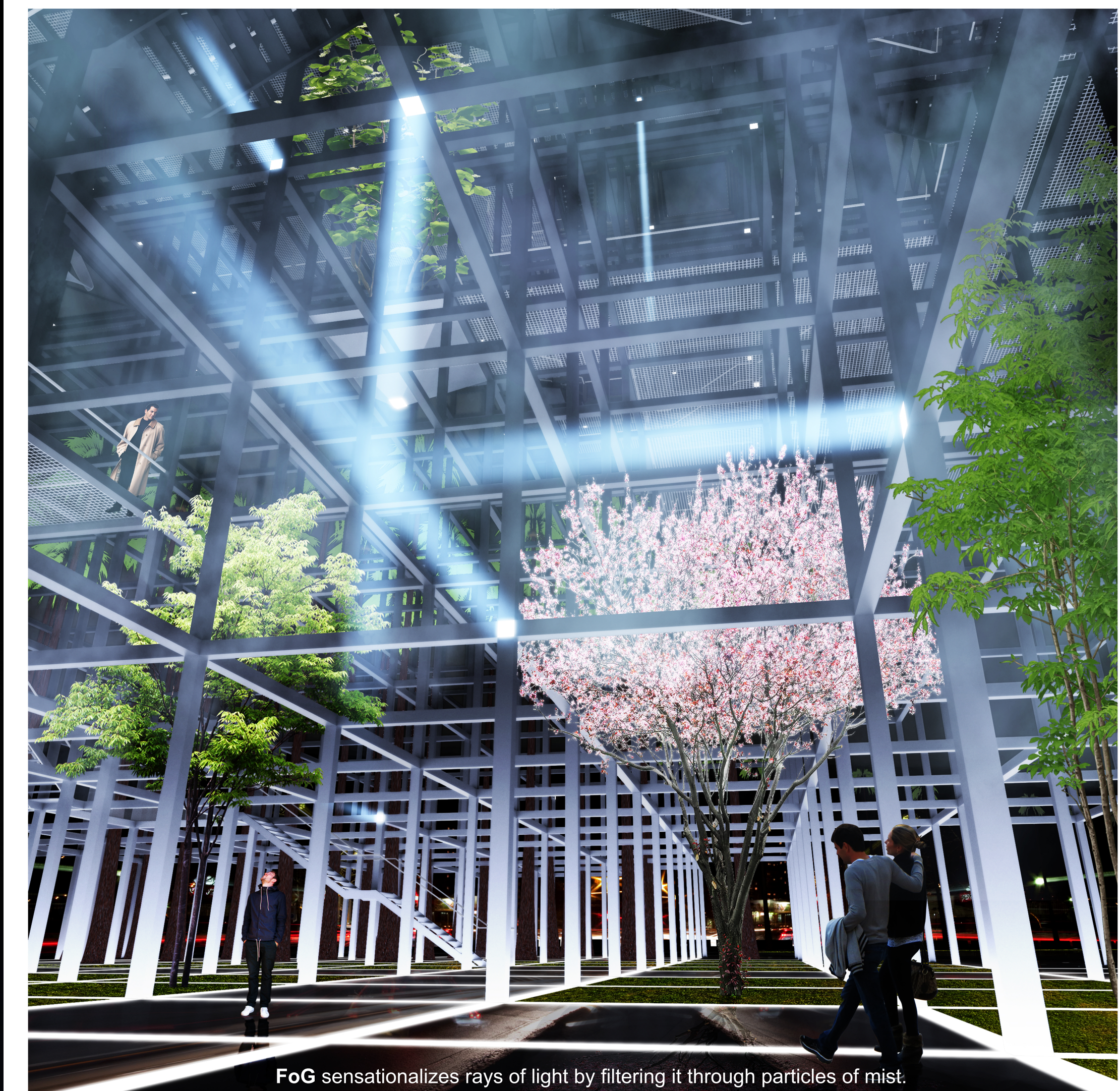
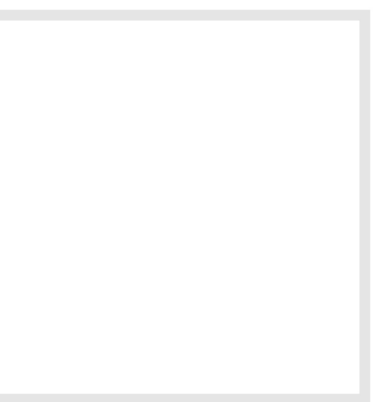
is an operative landscape that synchronizes algorithm & atmosphere, substance & attribute, fog & light, in an effort to elevate architecture into new realm of discoveries.



INSPIRATION: A RAY OF LIGHT



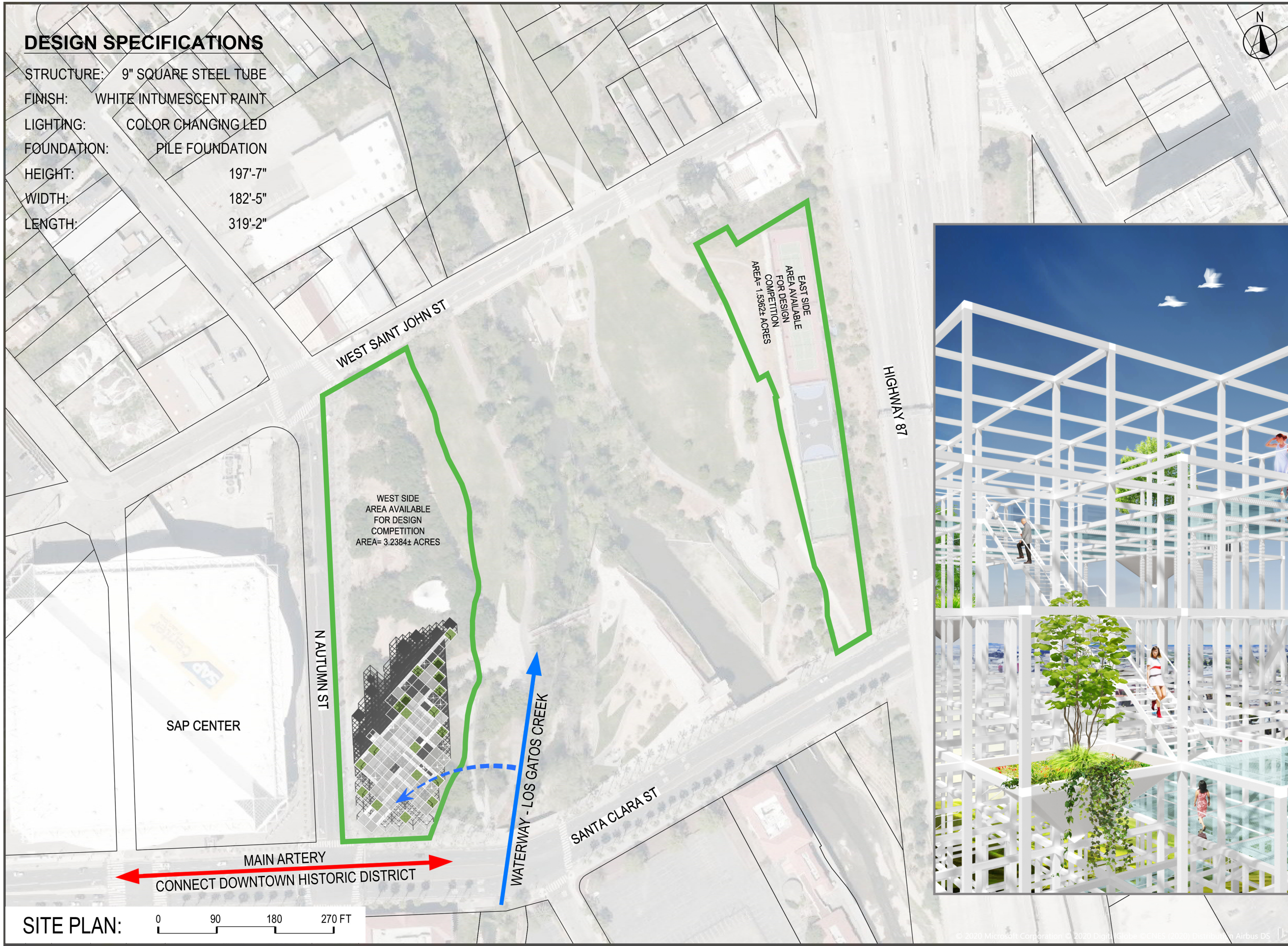
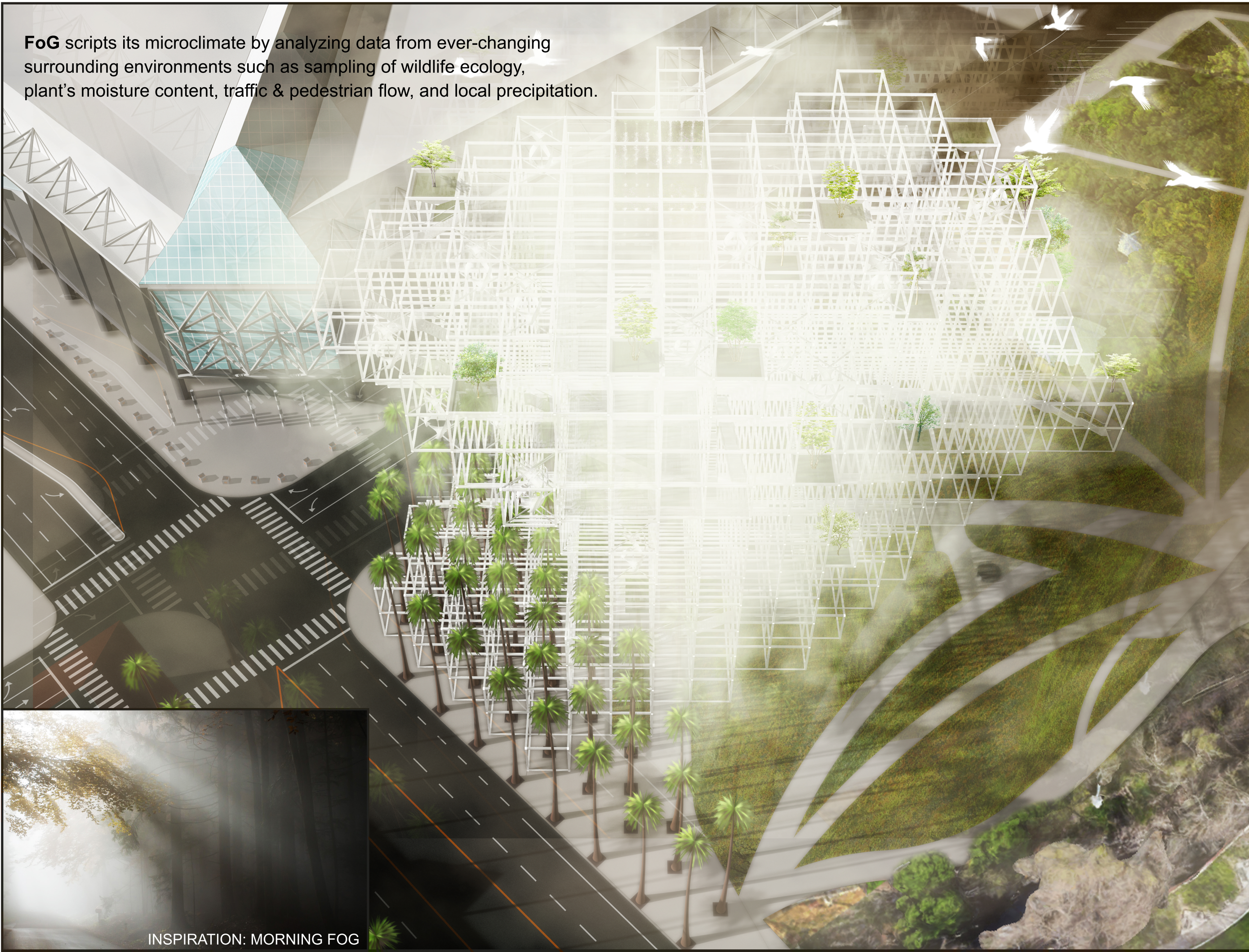
INSPIRATION: FOG COMPUTING



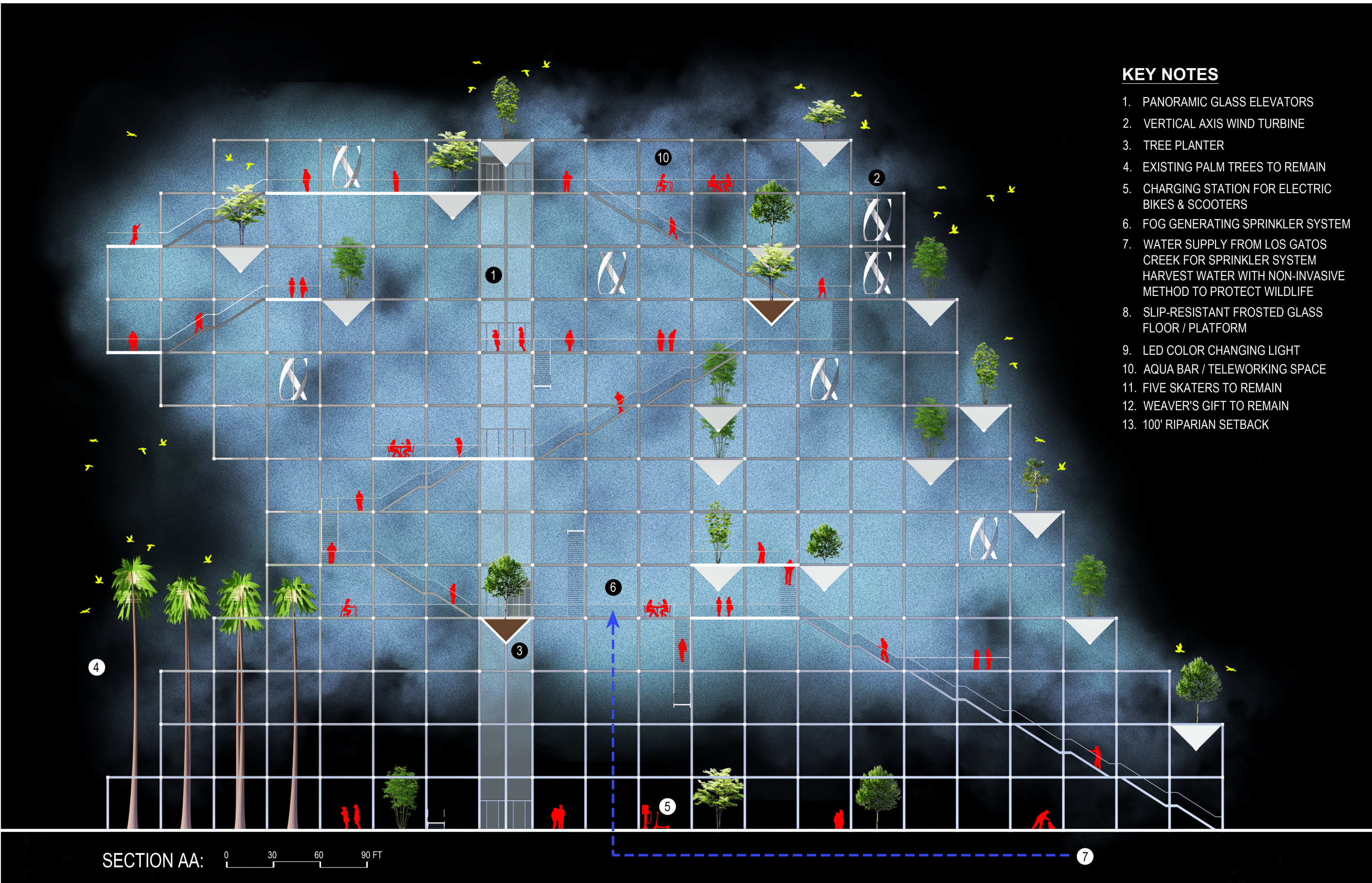
FoG sensationalizes rays of light by filtering it through particles of mist.



FoG provides essential moisture for the plants and attract wildlife.

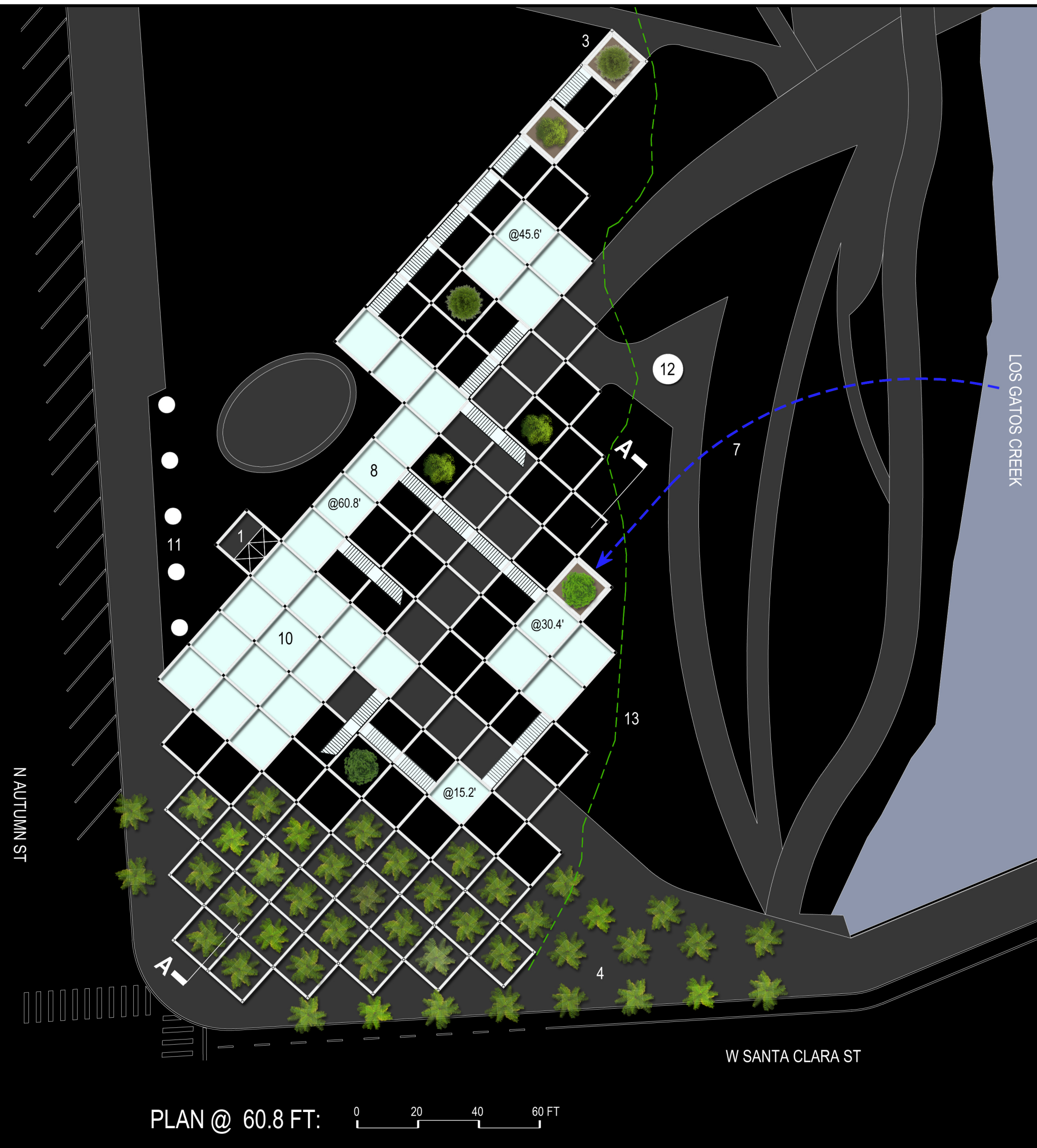


A labyrinth of stairs links platforms in various elevations, allowing visitors to choose their own favorite trails & vistas.



**KEY NOTES**

1. PANORAMIC GLASS ELEVATORS
2. VERTICAL AXIS WIND TURBINE
3. TREE PLANTER
4. EXISTING PALM TREES TO REMAIN
5. CHARGING STATION FOR ELECTRIC BIKES & SCOOTERS
6. FOG GENERATING SPRINKLER SYSTEM
7. WATER SUPPLY FROM LOS GATOS CREEK FOR SPRINKLER SYSTEM HARVEST WATER WITH NON-INVASIVE METHOD TO PROTECT WILDLIFE
8. SLIP-RESISTANT FROSTED GLASS FLOOR / PLATFORM
9. LED COLOR CHANGING LIGHT
10. AQUA BAR / TELEWORKING SPACE
11. FIVE SKATERS TO REMAIN
12. WEAVER'S GIFT TO REMAIN
13. 100' RIPARIAN SETBACK



Vertical Axis Wind Turbines is capable of generating energy at low wind speed. This technology is also "bird-safe" as its blades positioned close together and rotate at constant velocities, enabling birds in-flight to spot easily.

**FoG OFFERS**

- MICROCLIMATE
- WILD HABITAT
- VEGETATION
- URBAN HIKING
- NET ZERO TECHNOLOGY
- CHARGING STATION
- ILLUMINATION SHOW
- AQUA BAR
- OUTDOOR WORKSTATION