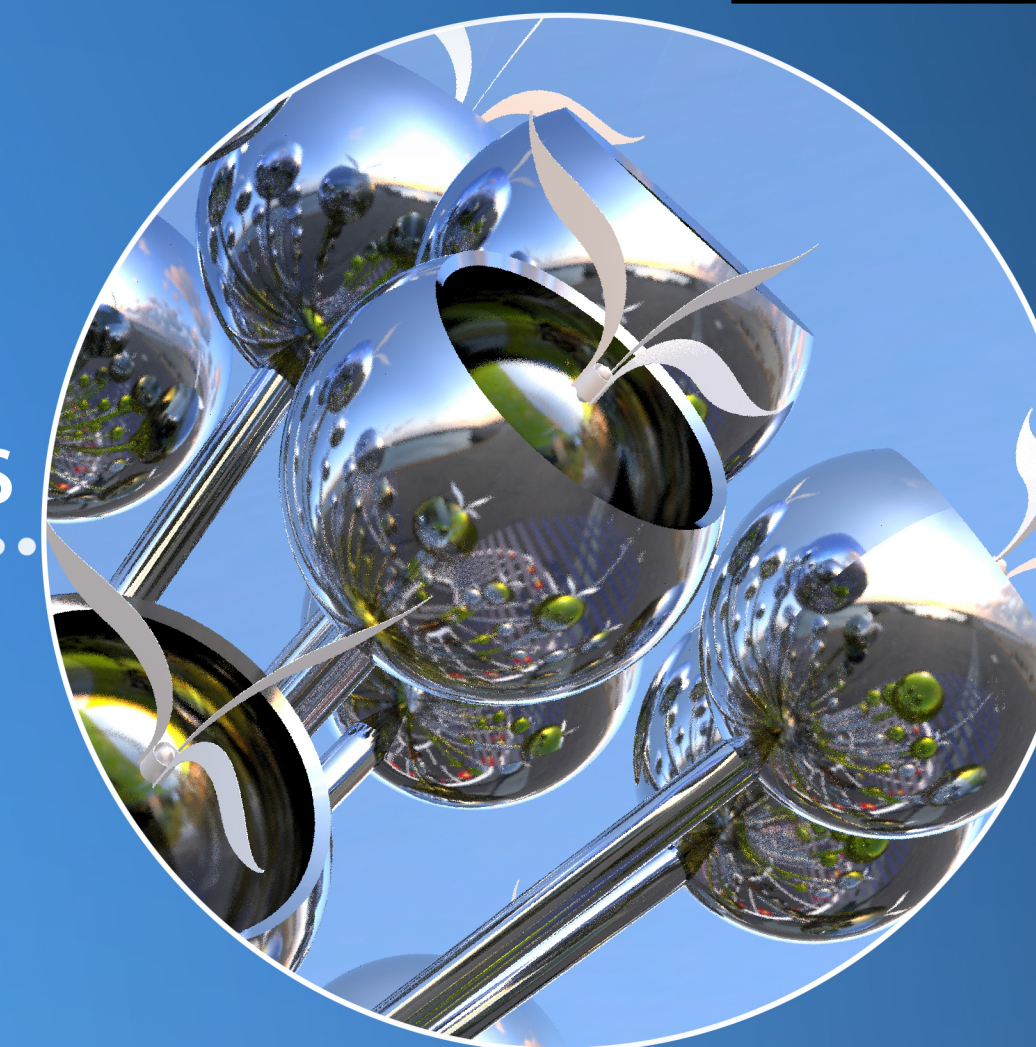


Solar Panel



3D printers



Elevator

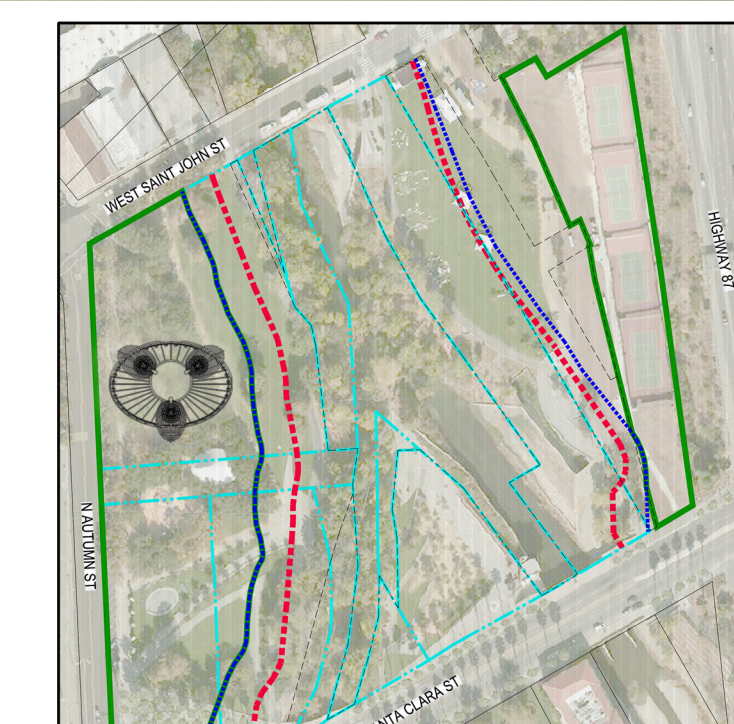


LIGHTING SEEDS
(wind powered lamp)

LIGHTING SEEDS

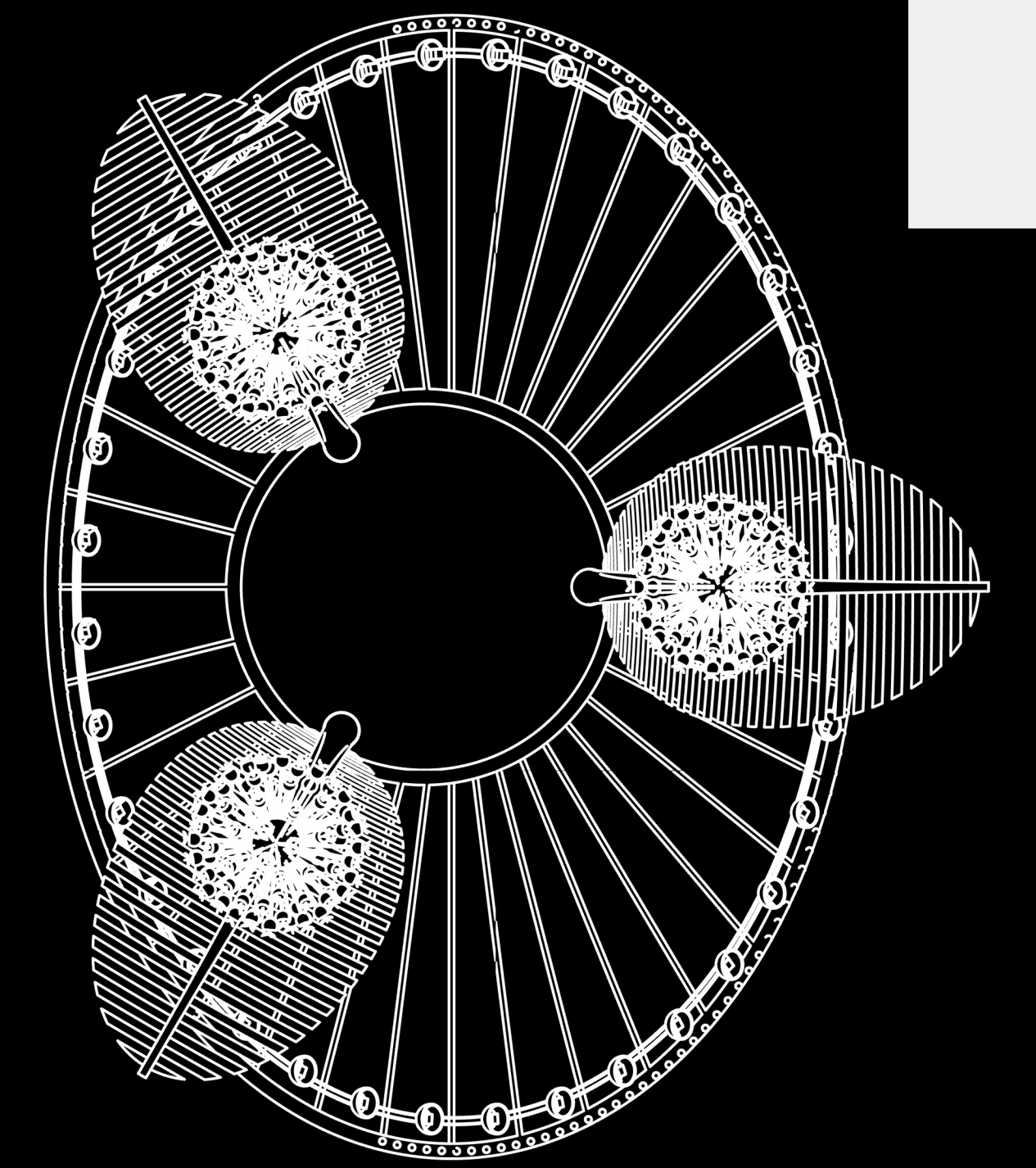
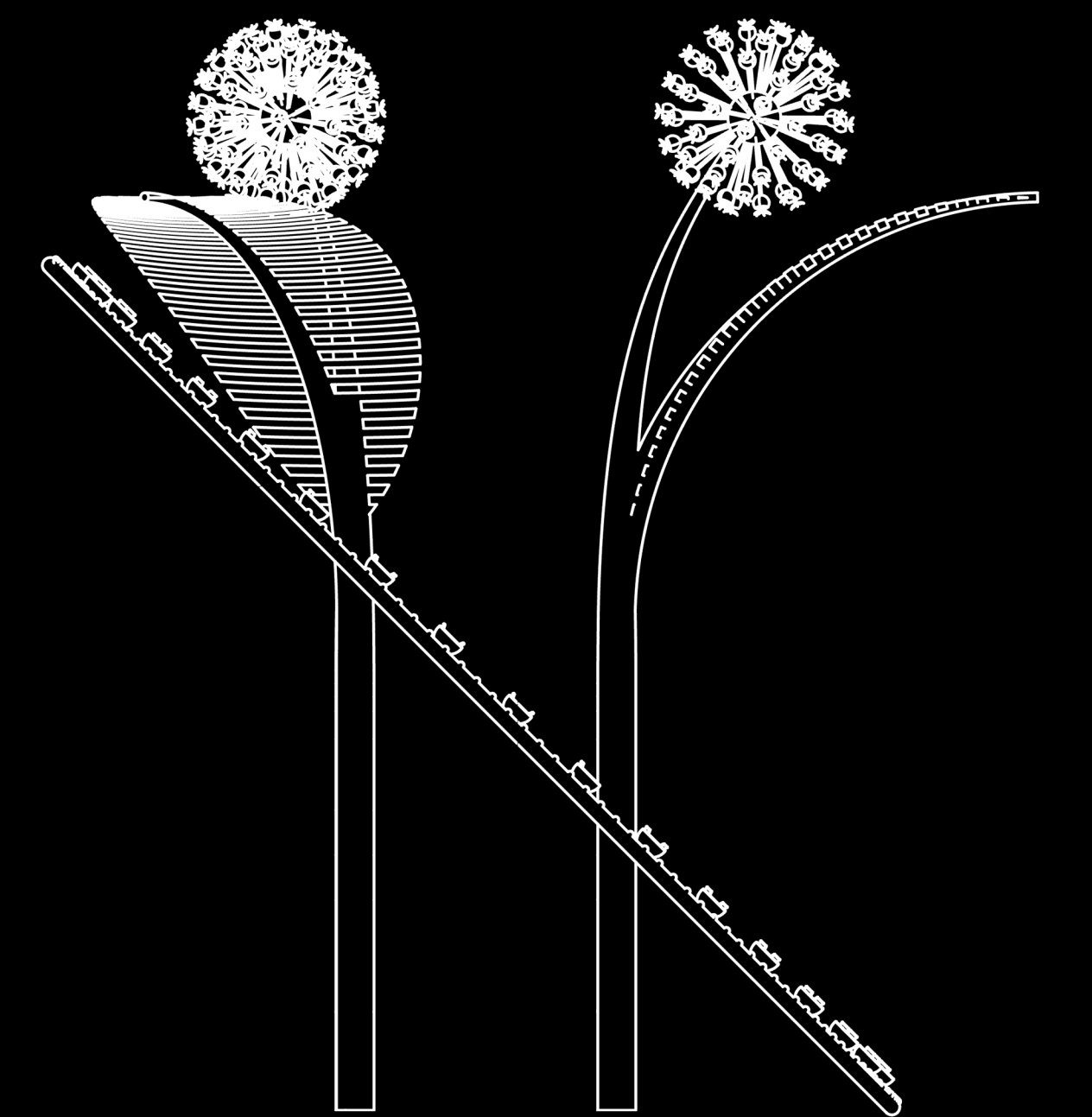
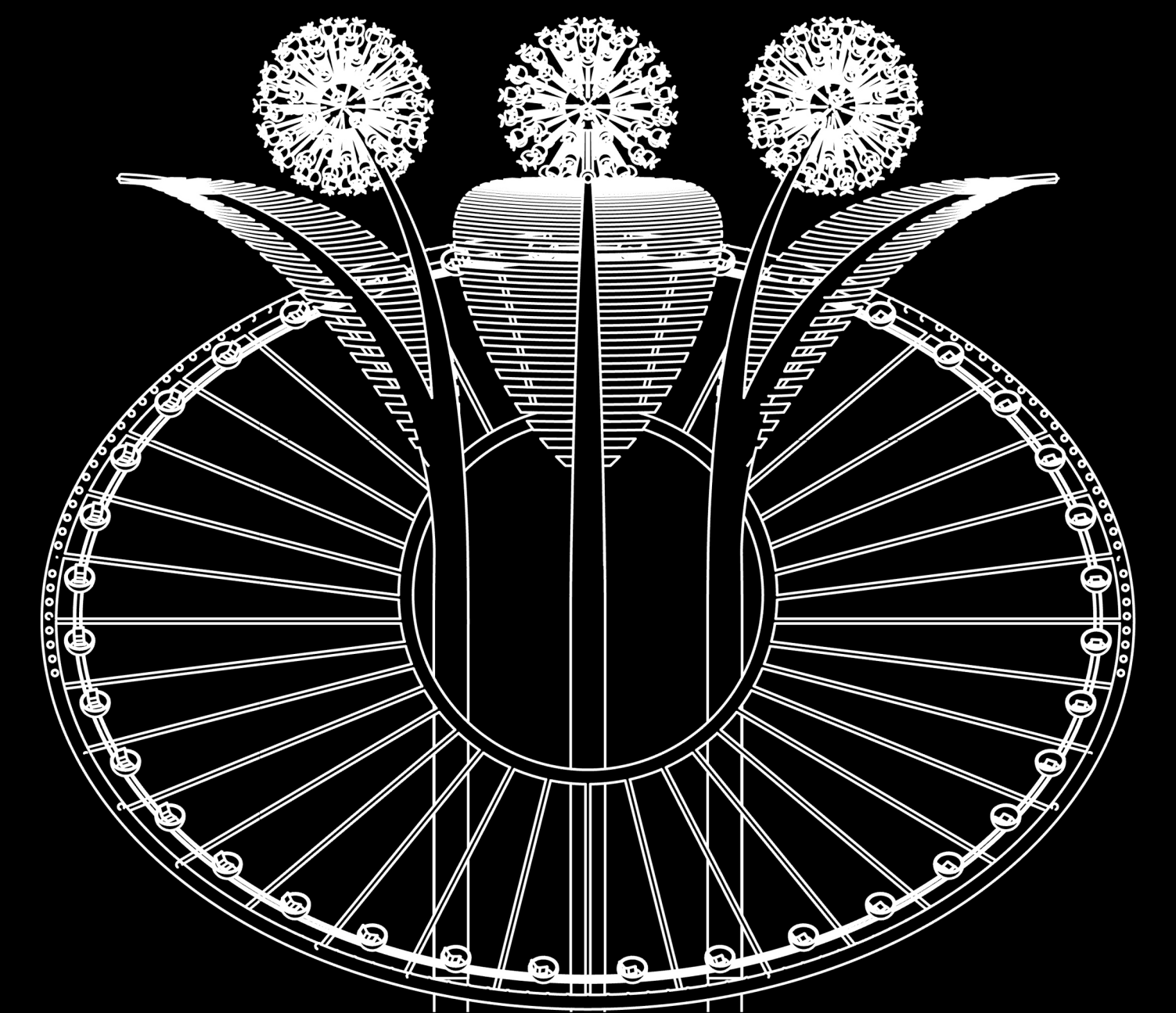
People all over the world come here to find joy and take LIGHTING SEEDS to everywhere.

The main body of the building consists of a circle track and three central columns. The circle track is tilted 45° from the ground and is held in place by three central columns. Visitors can take an elevator along the tracks to enjoy the thrill of extreme speed and the view from afar. There are 36 spherical 3D printers at the top of each column. They use waste plastic bottles as raw materials to print out LIGHTING SEEDS (wind powered lamp) . When a LIGHTING SEED is printed, it will leave the printer, rotate like a dandelion seed with the wind, and slowly fall down. atmospheric winds will drive the generator to light up the seeds. Visitors from around the world can pick up LIGHTING SEEDS and take them home, thus bringing the idea of "less pollution, greener energy" to every part of the world.





Tourists from all over the world can pick up these lighting seeds and take them home.



200 X 175 X 220