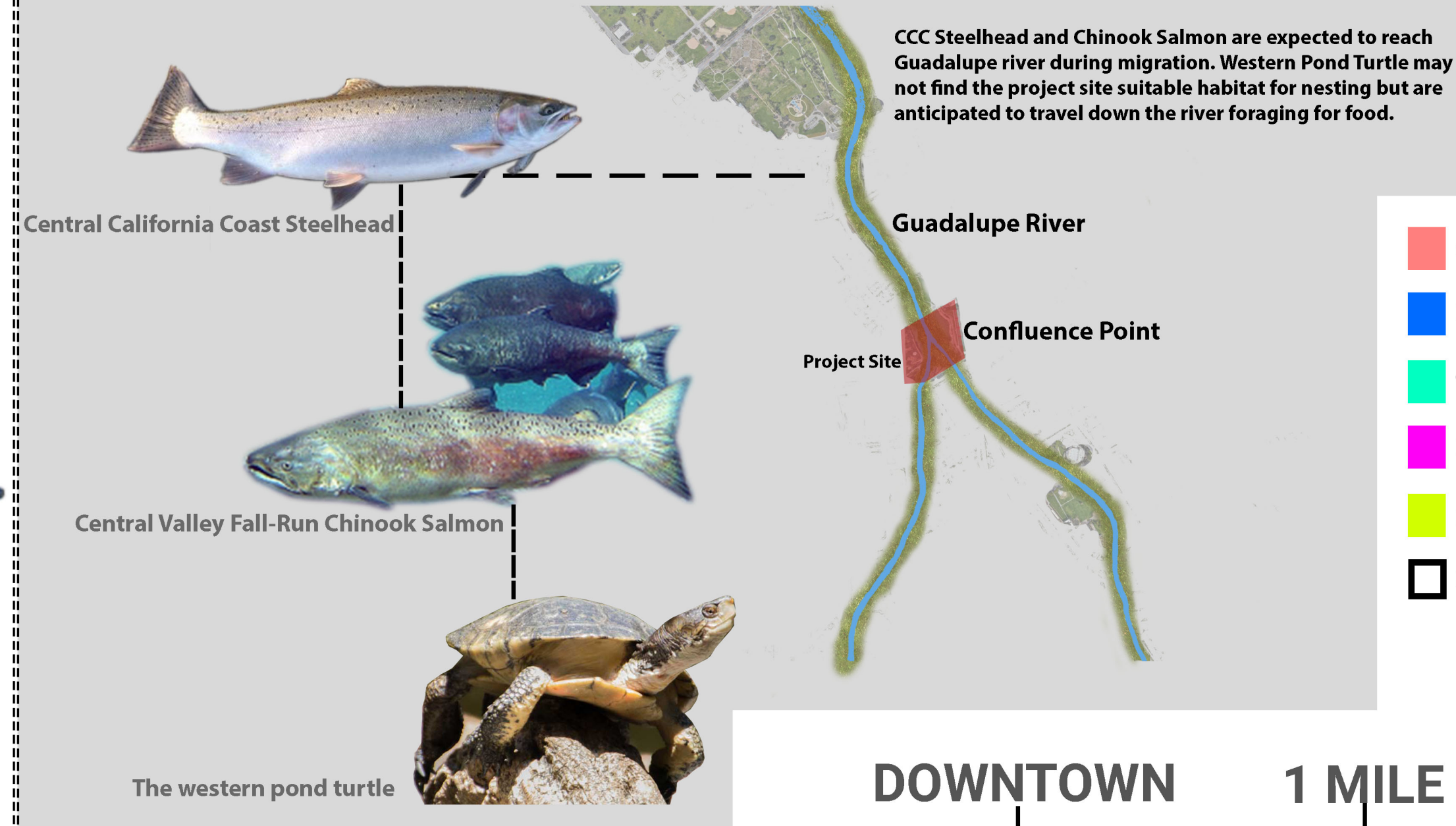


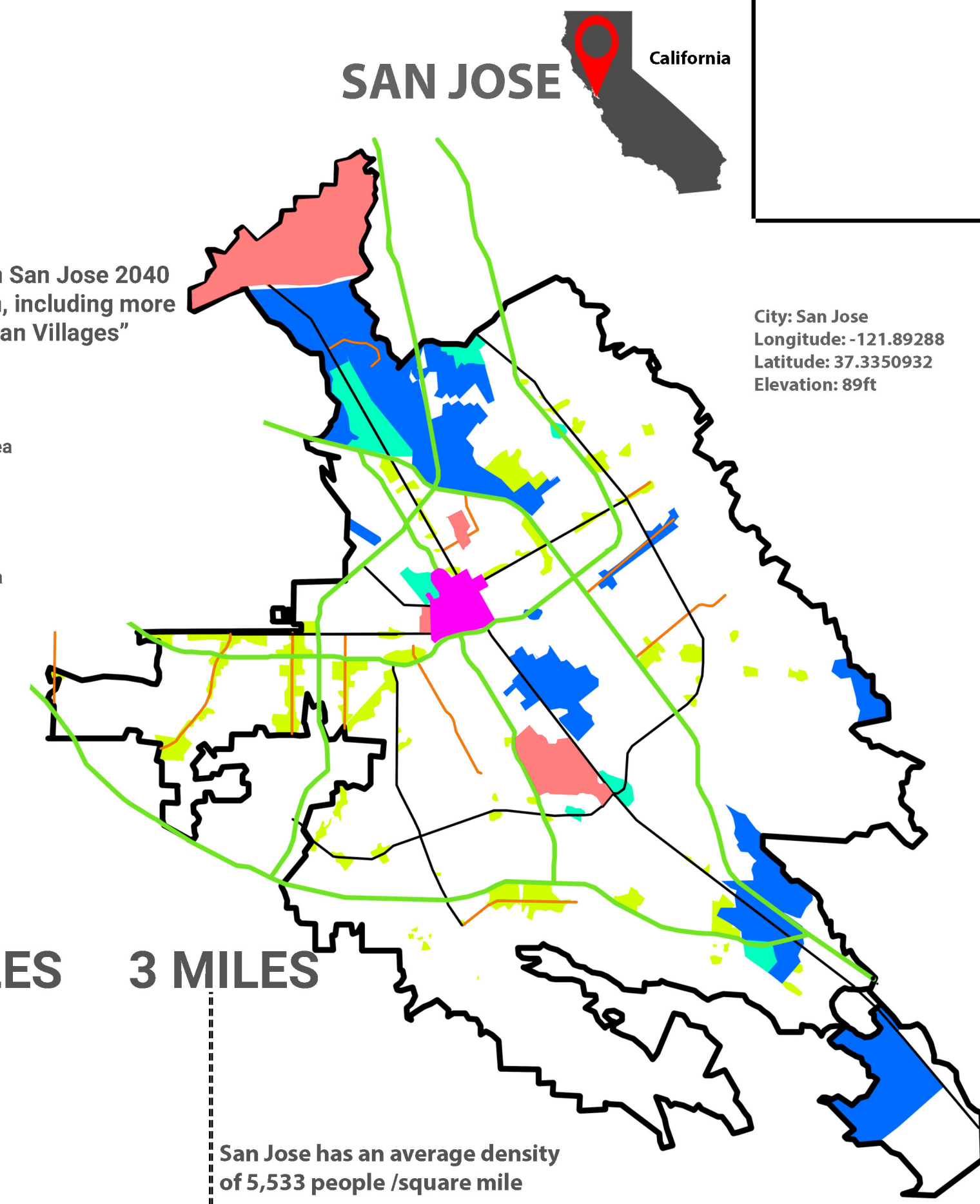
WILDLIFE IN GUADALUPE RIVER LISTED UNDER THE FESA AND CESA AS THREATENED, ENDANGERED SPECIES



SAN JOSE

The Envision San Jose 2040 General Plan, including more than 70 "Urban Villages"

- Specific Vision Plan Area
- Employment Area
- Transit Employment Area
- Downtown
- Urban Village
- Urban Growth Boundary



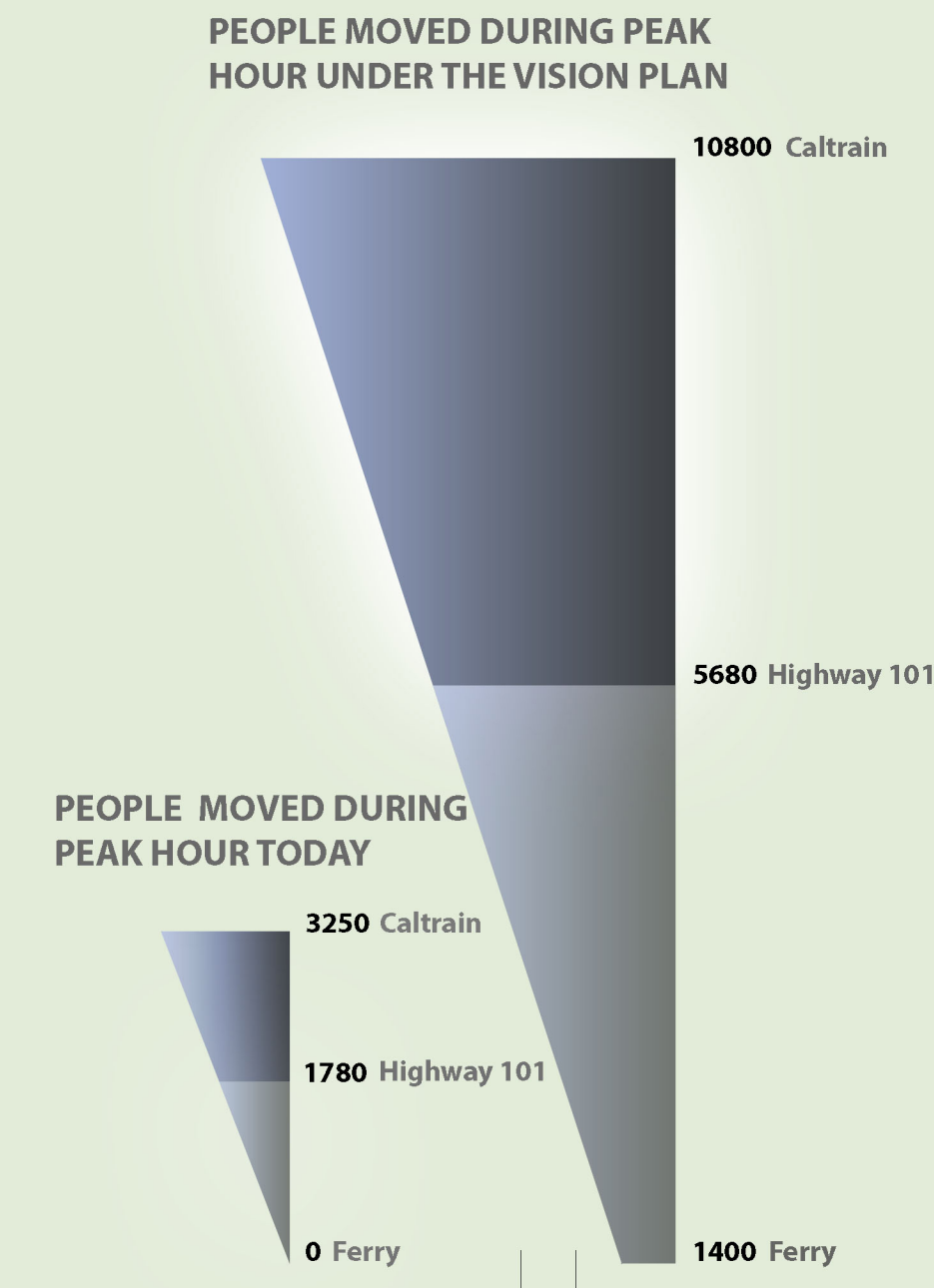
DOWNTOWN **1 MILE** **2 MILES** **3 MILES**

At approximately 800-plus-acre area, it is larger than San Francisco's and Oakland's downtown

downtown San Jose has a small job base of about 36,000 jobs but under the Envision San Jose Plan they could rise up to 48,500 by 2040

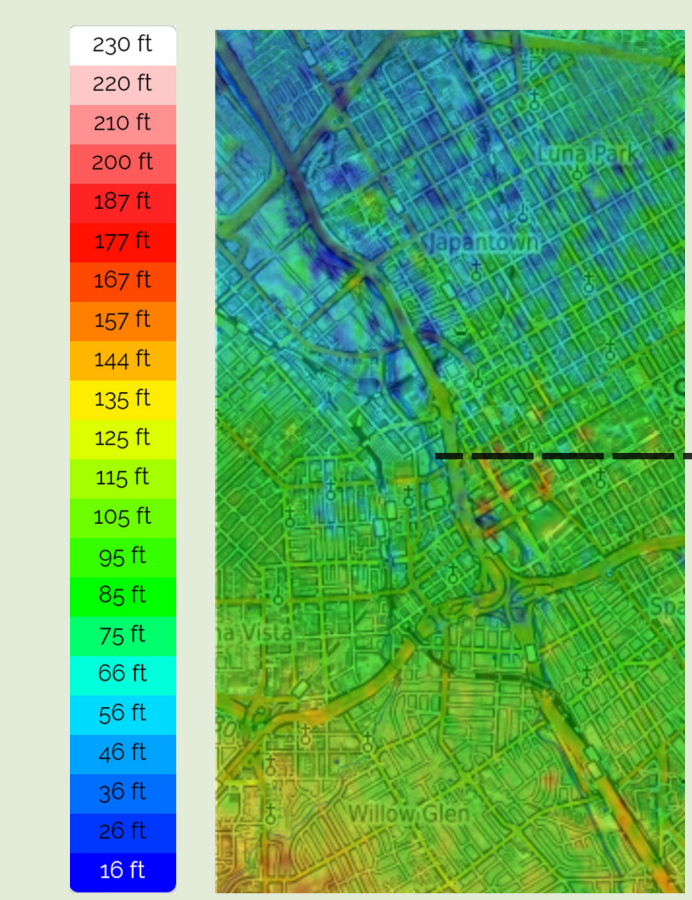
San Jose has an average density of 5,533 people /square mile

THE CORRIDOR TRANSPORTATION SYSTEM VISION

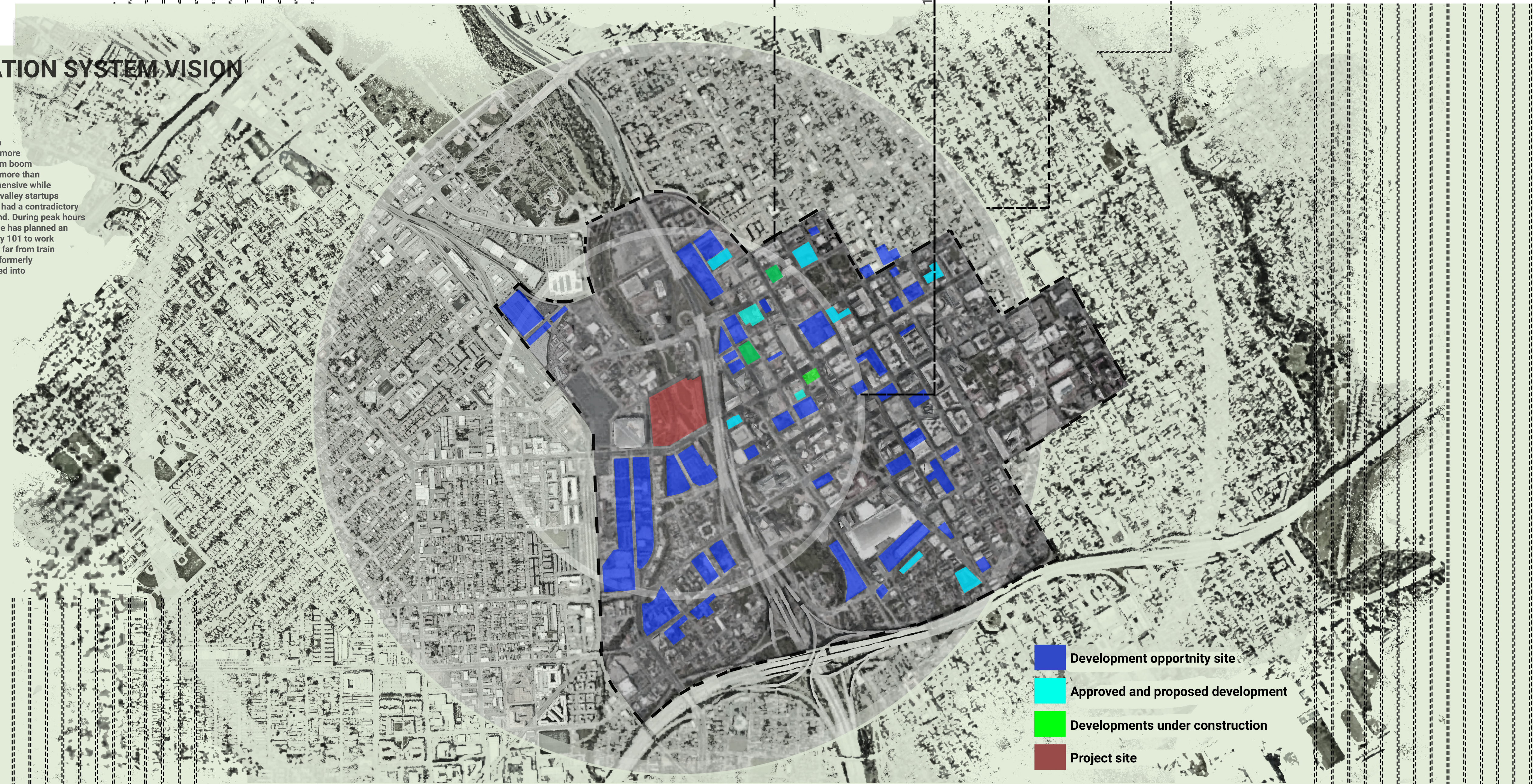


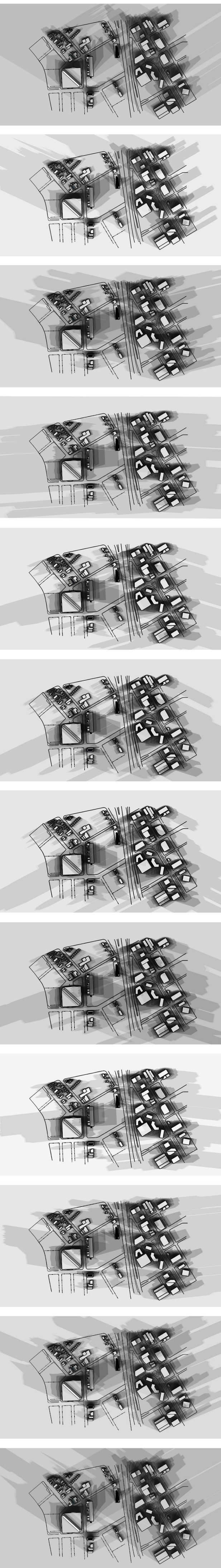
The Vision of Caltrain Corridor system seeks to bring growth to the counties of San Jose and San Francisco by bringing more people and services quickly and efficiently. Since the dot-com boom of 1999-2000 the number of the population commuting has more than doubled and residential spaces have become scarce and expensive while when you project that with the exponential growth of silicon valley startups the future looks more prosperous - the Caltrain Corridor has had a contradictory case of having no major upgrades to keep up with the demand. During peak hours it has become common to see overcrowding of late. San Jose has planned an upgrade of it major Transportations, the Caltrain and highway 101 to work on until 2040 and with redevelopment of sites both near and far from train stations, it poised to bring positive densification. Moreover, formerly single-use or low-density office spaces are being redeveloped into high-density or mixed-use developments.

SAN JOSE FLOOD MAP



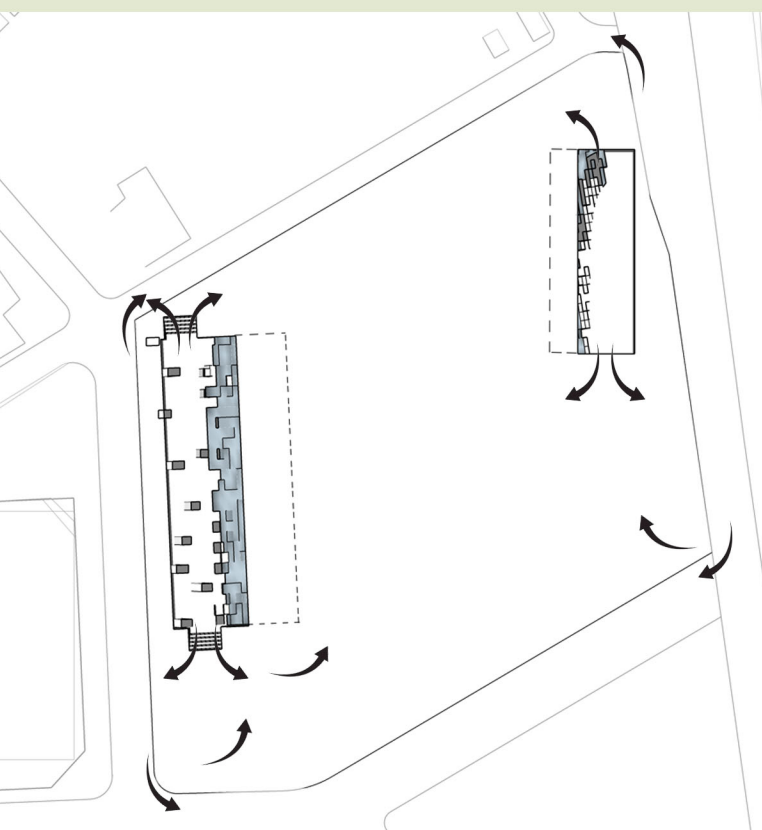
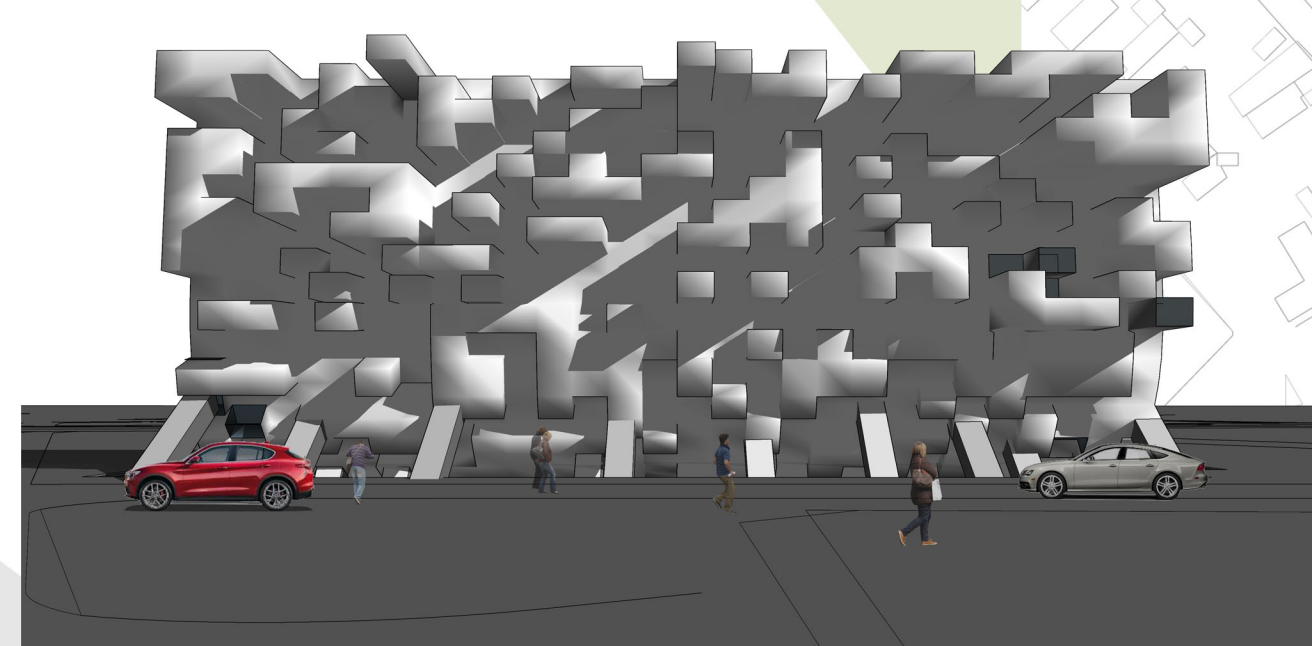
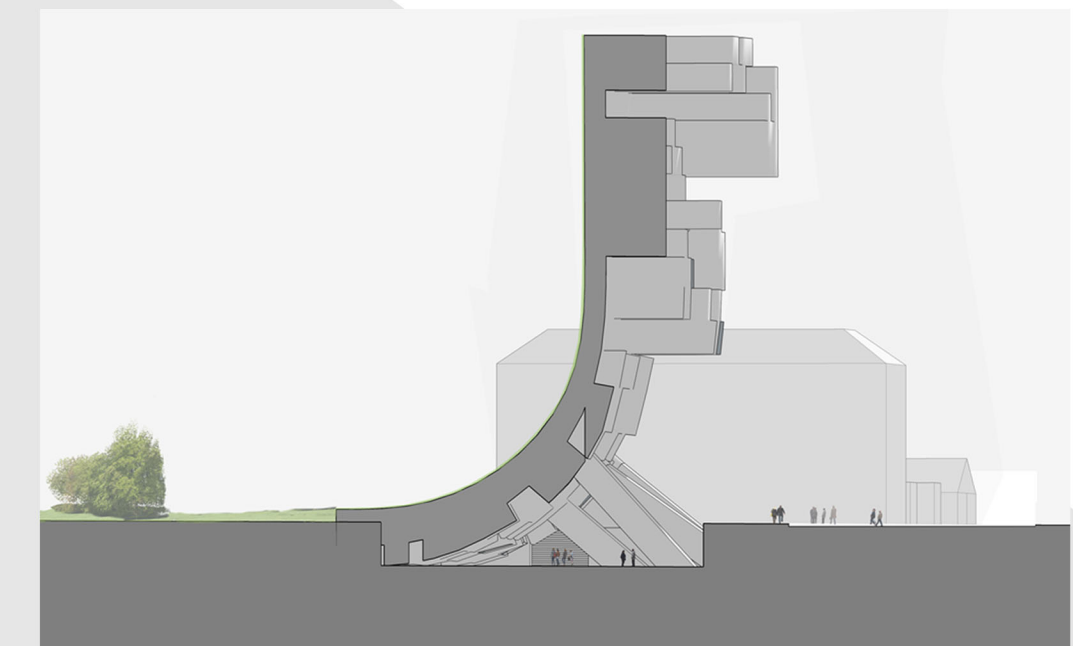
San Jose is in the South Bay and has relatively low-mild elevation above sea level. The arena Green site Has elevation between 60-80 ft above sea level





San Jose has a reputation as a host of silicon valley startups and for its cultural/social diversity, with that in mind we had a clear vision of something that will be relatable to everyone no matter their background. It needed to be simple but daring enough for someone to take a pause and stare for a while. It shouldn't be necessary beautiful or serve a function but spark creativity so people will think of the function for themselves. The Japanese have a dish called Tofu, it is not something you enjoy when eaten alone but once used as a complimentary dish served with other food you start to see its true value and why it is the most endearing food and for centuries it stood the test of time. The people of this city are connected through common denominators like science, art, and creativity - like Tofu, alone they cannot succeed but embracing each other they have achieved a lot in the past 50 years than the century before. The prime reason might have been the shift to computer/digital industries but the foundation was gathering different minds from all over the world with common goals.

The Urban Wall, takes some of the above beginnings and translates them to design cues that mimic the cityscape. Emerging from the ground where everything begins - every civilization and monument start from dust - it rises to heights above. It bends upright defying gravity and cubes of varying length piece out of the wall forming a city-like scenery. The full meaning of it all can be interpreted differently from individual to individual but its core value is to inspire the future as we begin a new journey.



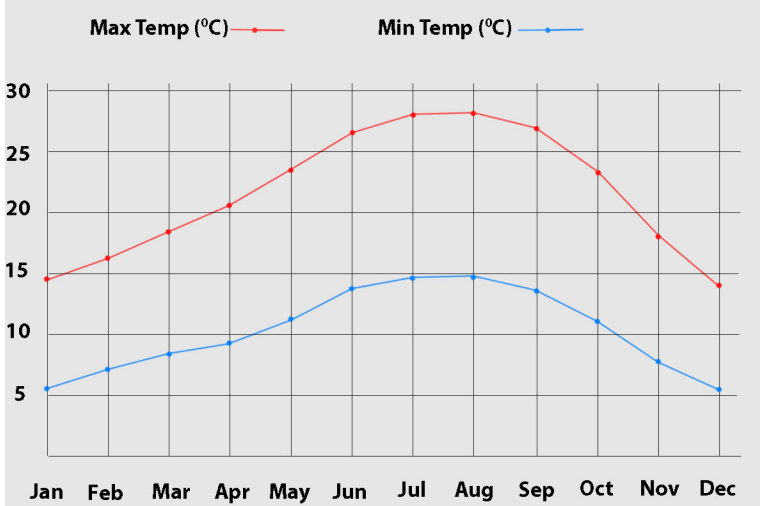
MASS DIAGRAM

Inspired by the cityscape the structure mimics the formation of urban settlements. Attributes such as streets and building boundary in context

Cityscape looks more complete with the irregular height of individual units

the upside down bend of the design emulate a complex group of unit or a city rising from the ground up

ANNUAL AVERAGE TEMPERATURE



The inception of the concept has the utmost regard to the fact that in a unique area, the Downtown of San Jose, and with the future of the city - in particular areas around Arena Green projected for prosperous developments. We imagine more people coming to work or visit for various reasons and experiencing the growth first hand. We also imagine the complex nature the city is diving into, investments to diversified industries led by corporates can have its fair share of doldrums.

In a changing environment which is increasingly becoming automated, digital and purpose oriented it likely people will start to value time of brief escape from it all. A quiet stroll, a board game, or just sitting and watching nature blossom - all this will become valuable as money itself. The Urban Wall, is a concept that suggests a stroll within its mini street corridor, a tour at its senseless formation, an exploration of imaginations, or a source of shade as you sit quietly on the park bench or even better - sitting on the lush grass. We hope people will be encouraged by this experience to walk or ride bikes more than enclosing themselves in vehicles and depriving them of an alternative travel thrill.

