

SAN JOSE WATERFALL BRIDGE

BOARD 1



APPROACH FROM SANTA CLARA STREET



SERENE AND QUIET ESCAPE



HIDEOUT IN A HOT SUMMER DAY AND FROM A STRONG WINTER WINDS

PROJECT GOALS:

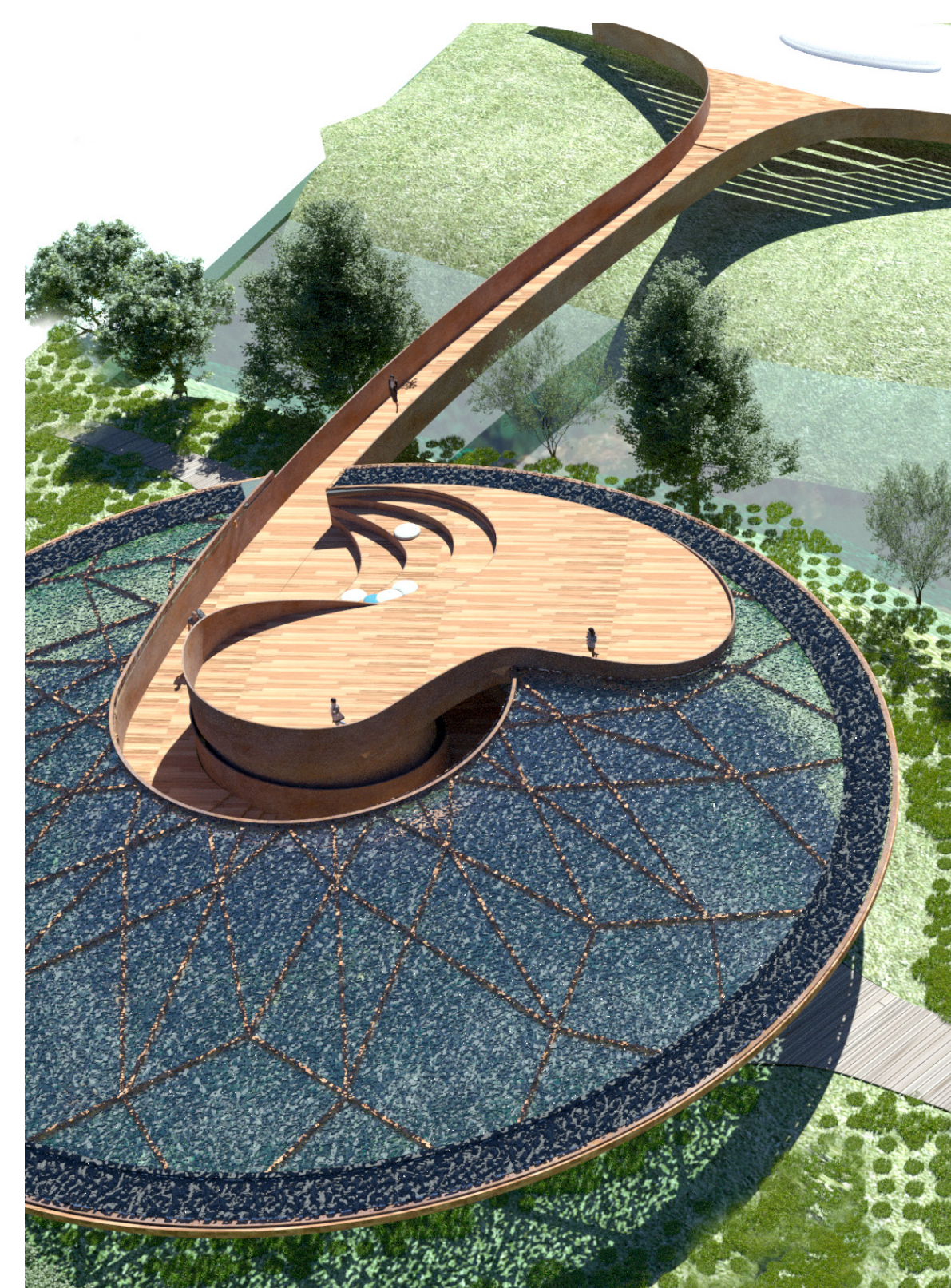
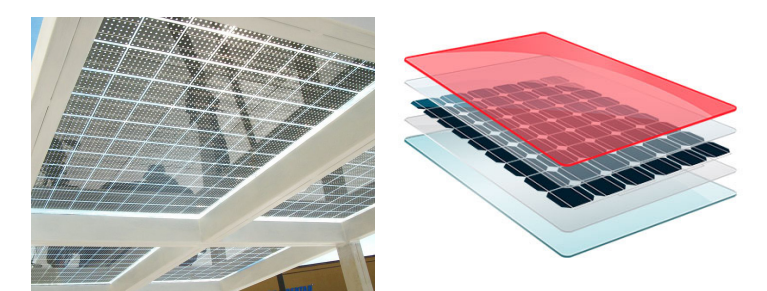
- ICONIC LANDMARK
- + QUITE AND SERENE ESCAPE FROM A CITY BUZZ
- + GREAT VIEWS OVER THE RIVER AND PARK
- + SPECIAL CONNECTION WITH NATURE

SYMBOLISM:

- 1. CIRCLE** REPRESENTS A LIFE CYCLE. CIRCLE HAS A STRONG MEANING IN NATIVE AMERICAN CULTURES SYMBOLIZING CONTINUOUS PATTERN OF LIFE AND DEATH, THE PATH OF THE SUN AND MOON, THE SHAPE OF A FAMILY HOME
- 2. WATERFALL** MEANS PURIFICATION AND CONNECTION WITH NATURE AND ROOTS BACK TO TIMES OF SAN JOSE AS A FARMING COMMUNITY
- 3. BRIDGE** IS STRONG SYMBOL FOR SAN JOSE AS A PLACE FOR A CROSS-CULTURAL EXCHANGE AND A GLOBAL CAPITAL OF INNOVATION AND TECHNOLOGY

NET ZERO energy:

- 1. PV film** can be applied on the glass to generate energy to supply the water pump and lighting features. There are a variety of semi-transparent or translucent films.



SAN JOSE WATERFALL BRIDGE

BOARD 2

ARENA GREEN EAST

ARENA GREEN WEST

SAP CENTER

VIEW FROM ST. JOHN STREET

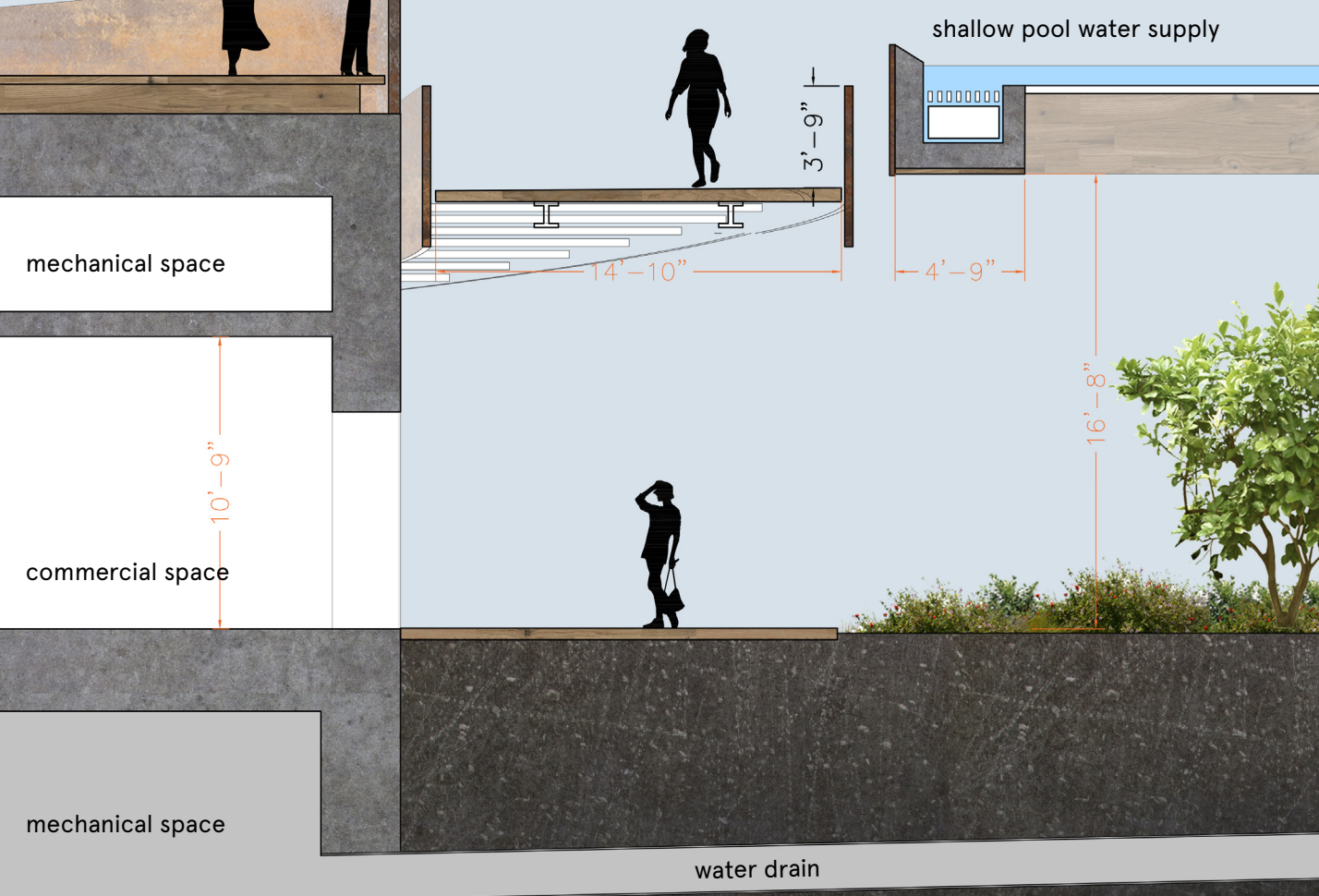
Guadalupe river

20' 8"

16' 8"

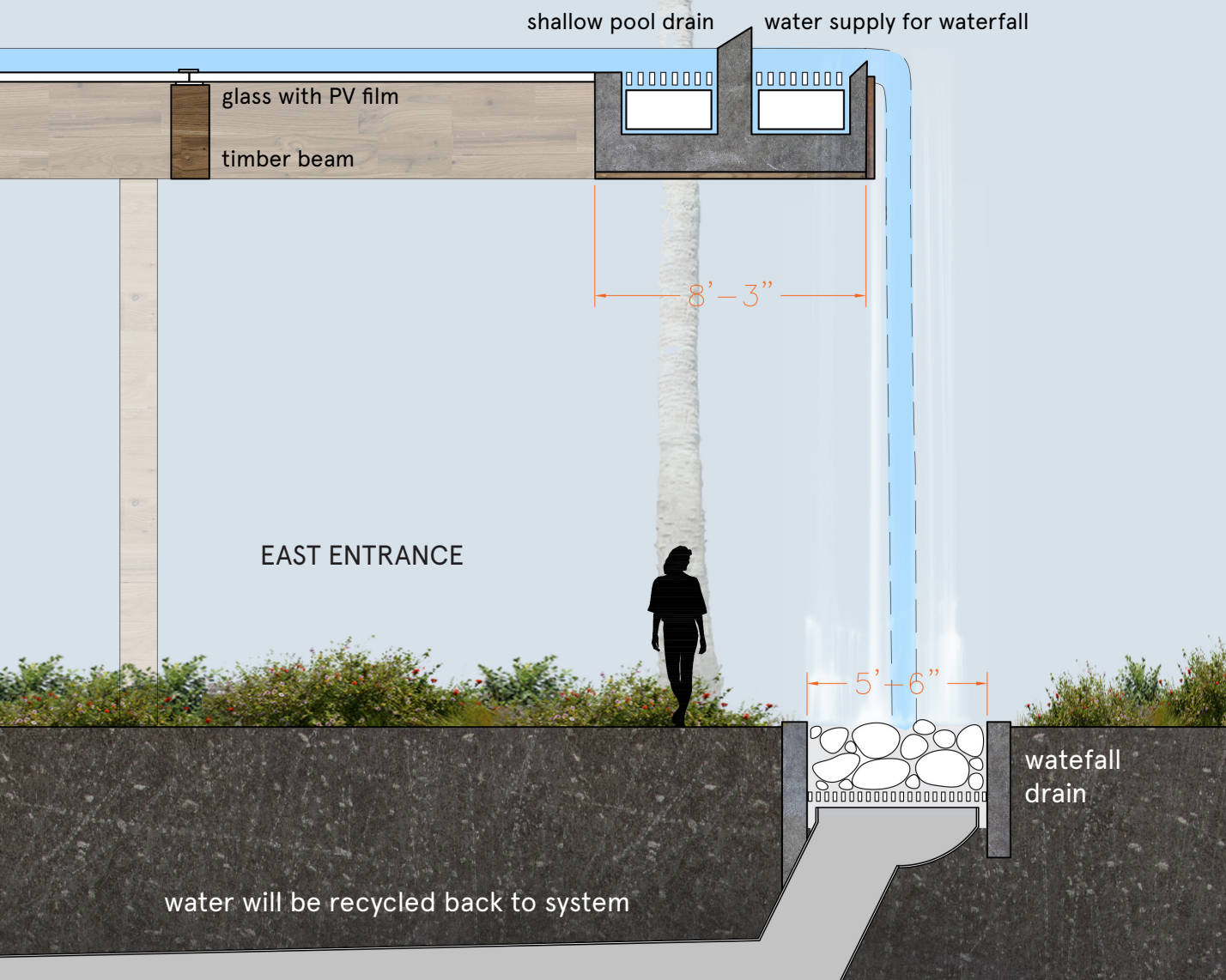
SITTING AREA

SECTION 1-1



VIEW TERRACE

SECTION 2-2



GF PLAN

1F PLAN

