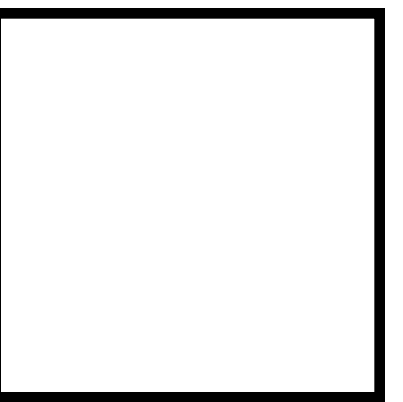


DESIGN PRESENTATION BOARD

24" W x 36" H

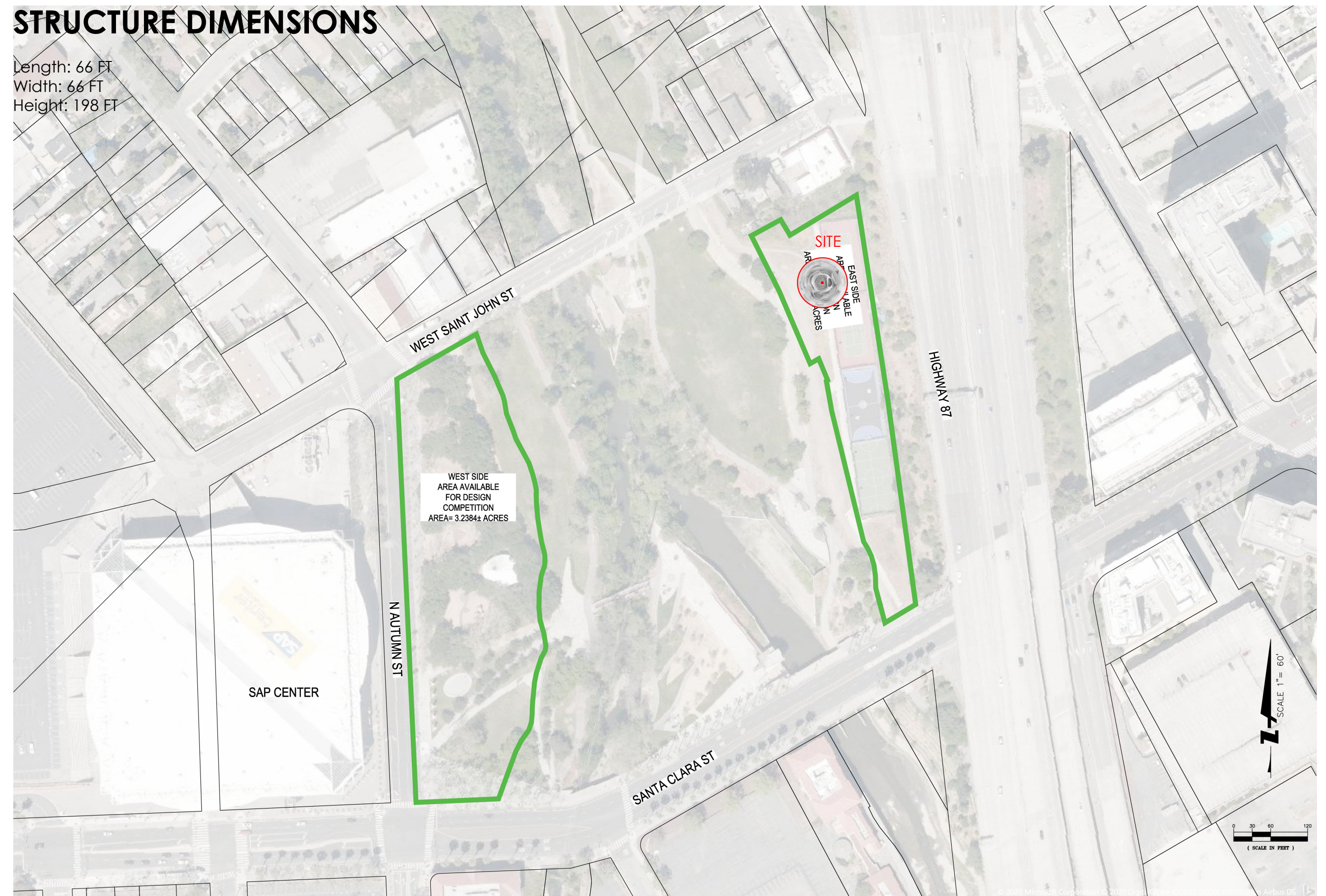


FLOWING SPACE

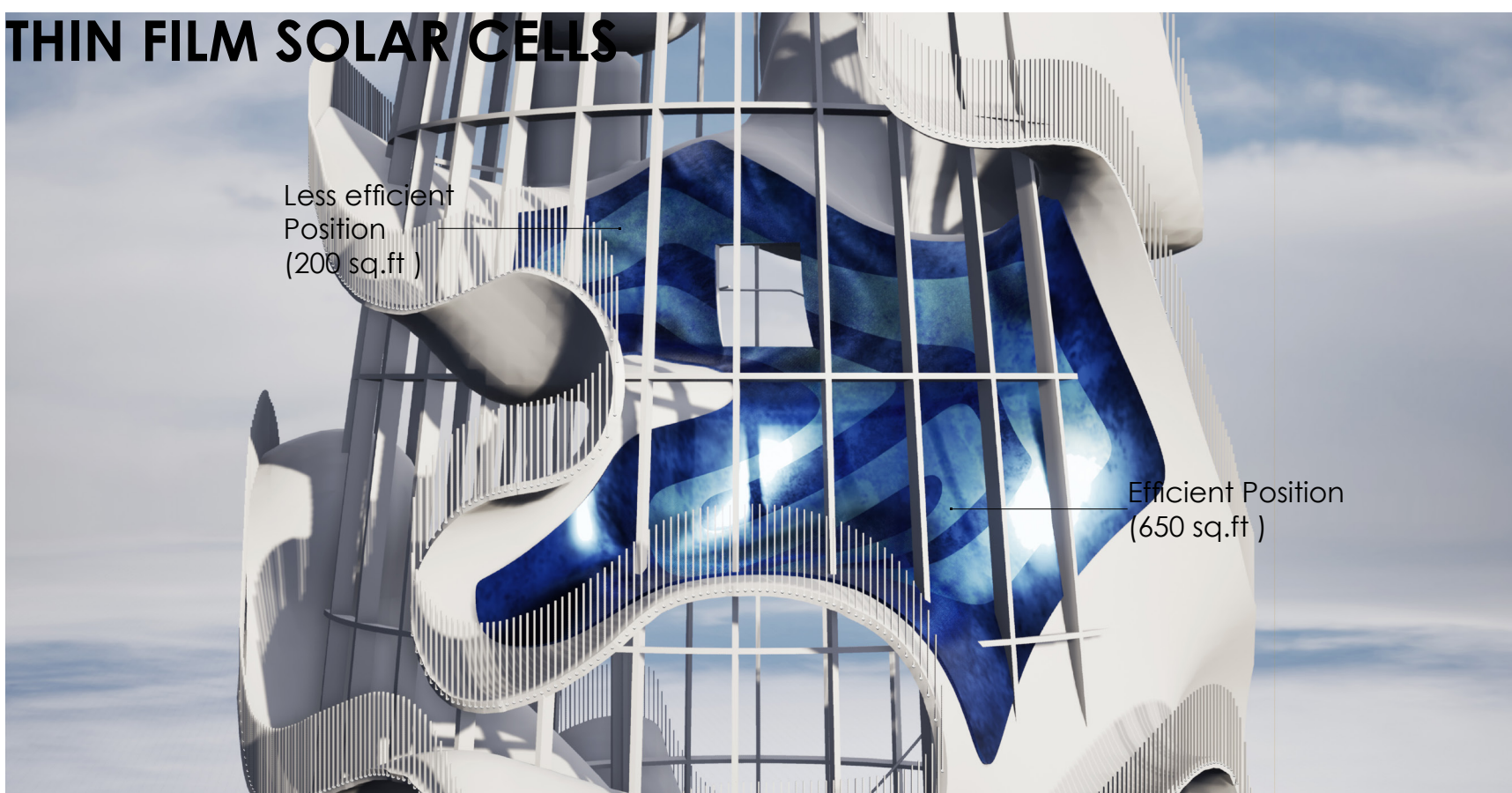


STRUCTURE DIMENSIONS

Length: 66 FT
Width: 66 FT
Height: 198 FT



THIN FILM SOLAR CELLS



PROJECT STATEMENT

It is a beautiful scene when Guadalupe River and Los Gatos Creek converge and send up golden waves in the broad glare of afternoon. We use the shape of waves to build the fantastic and flowing architectural space of the tower. The shape of waves is a kind of surface call 'minimal surface' in mathematics. We believe architecture for the future is something related to mathematical concepts.

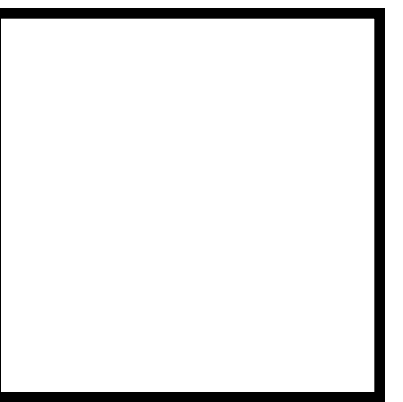
Floors, walls and ceilings of the tower are integrative and continuous. Inner side and outer side of the surface can flip over to the other along with tourists moving. Different kinds and scales of space emerge from the surface. The space is generally divided into four regions which are Main Hall, Art Gallery, Sky Cafe and Lantern, and each region has some rooms and shared space for various uses

Space and structure are eternal topics of architects. This project is a little different from the Eiffel Tower. The shape of the Eiffel Tower is reasonable for a structure that needs to resist gravity. The wonderful shape of waves is also reasonable, but formed by the surface tension of water. In terms of physics, gravity is gravitation, while surface tension is electromagnetic force. We do not emphasize the antagonistic relationship between structure and gravity when skyscrapers booming today. This project unfolds before us the beauty of tension.

- The shape of waves mix together high-tech building skill and universal aesthetics. This will builds civic pride and welcomes diverse communities from throughout the world.
- This tower is unique and original to pay a tribute to the culture of innovation of the silicon valley.
- This tower makes the best use of natural ventilation and lighting and installs 650 sq.ft of thin film solar cells on the southern surface to generate electricity, making itself a net-zero energy structure.
- Sunlight and nightscape lighting establish a strong visual presence from a distance during the day and at night.
- Instead of direct light, reflected light is used for nightscape lighting to express the beauty of the tower and to prevent environmental impacts within the Los Gatos Creek/Guadalupe River area.

DESIGN PRESENTATION BOARD

24" W x 36" H



(198.0 FT)

LANTERN

(168.0 FT)

SKY CAFE

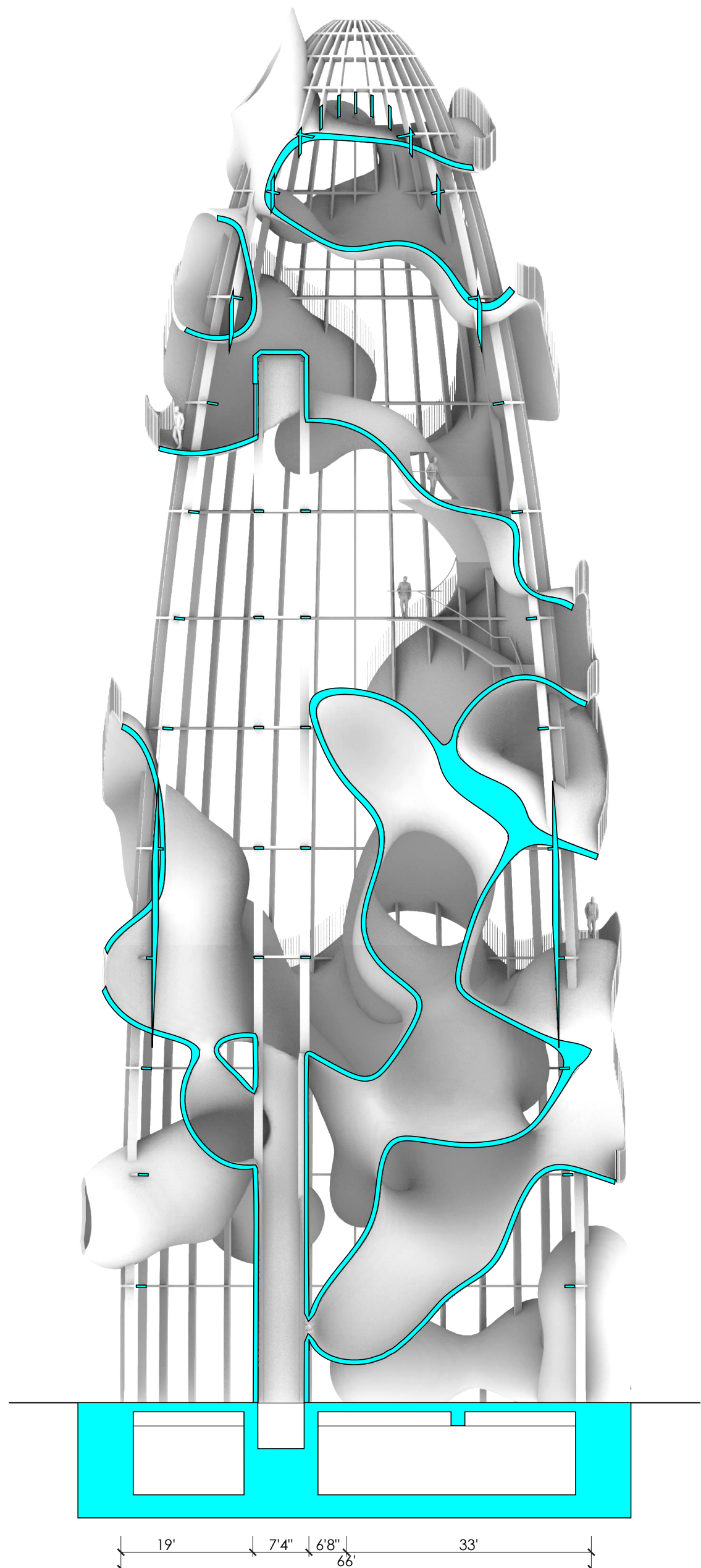
(138.0 FT)

ART GALLERY

(52.0 FT)

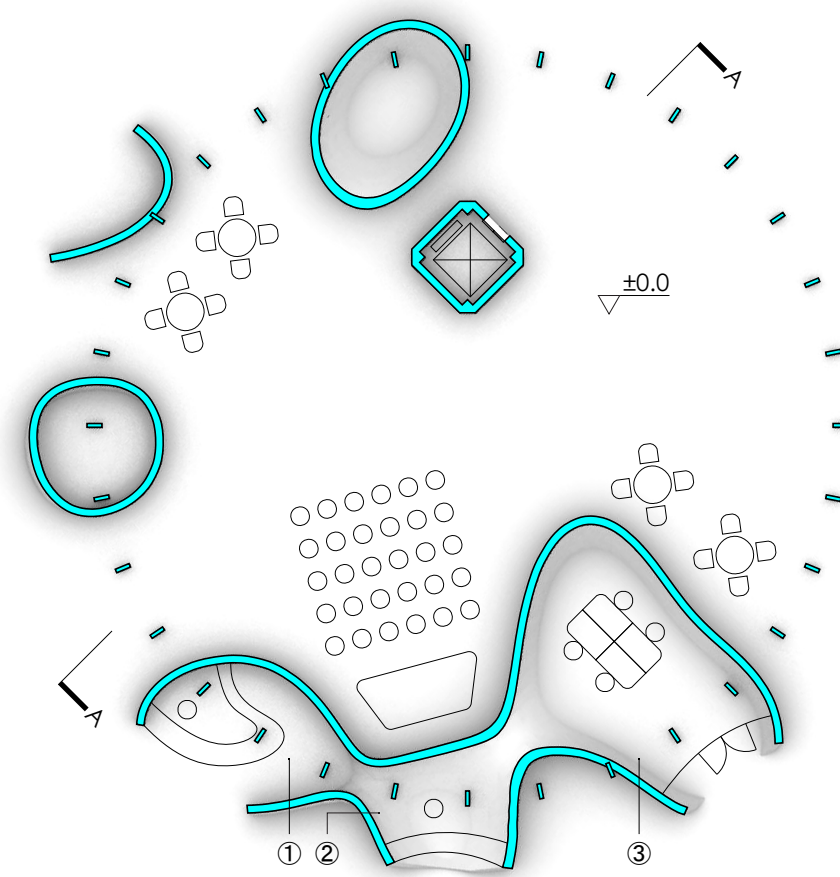
MAIN HALL

(±0.0 FT)



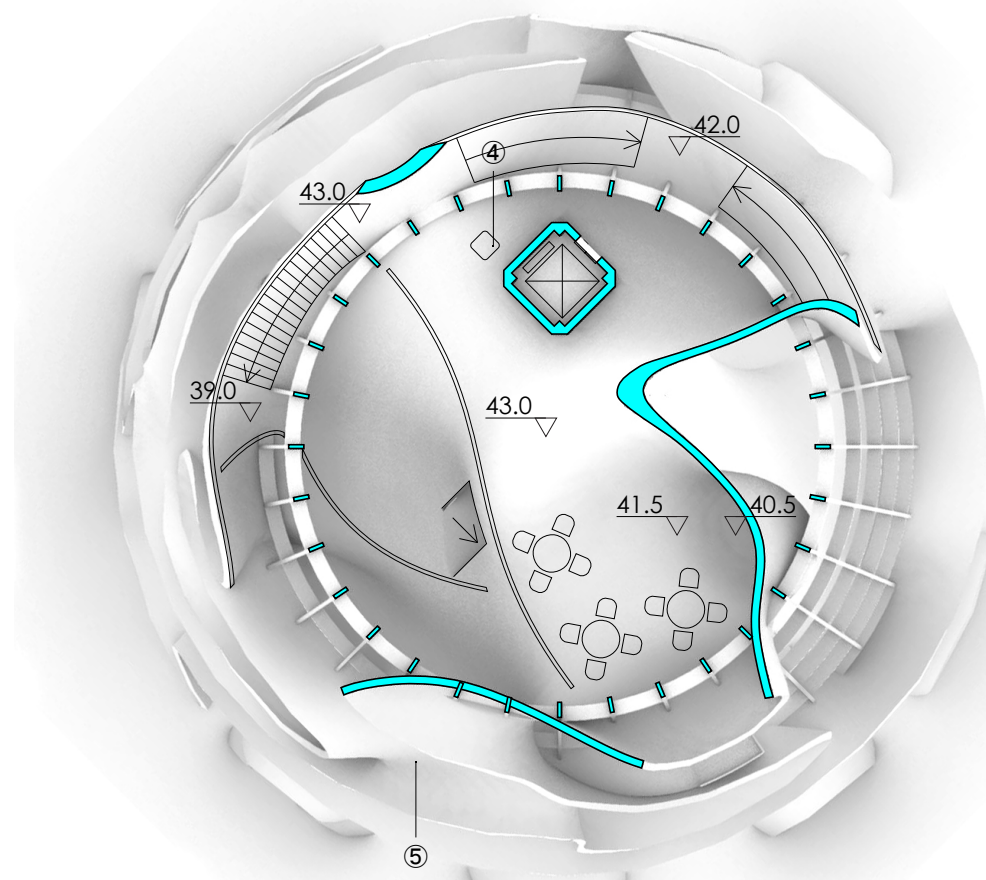
MAIN HALL

(±0.0 FT)



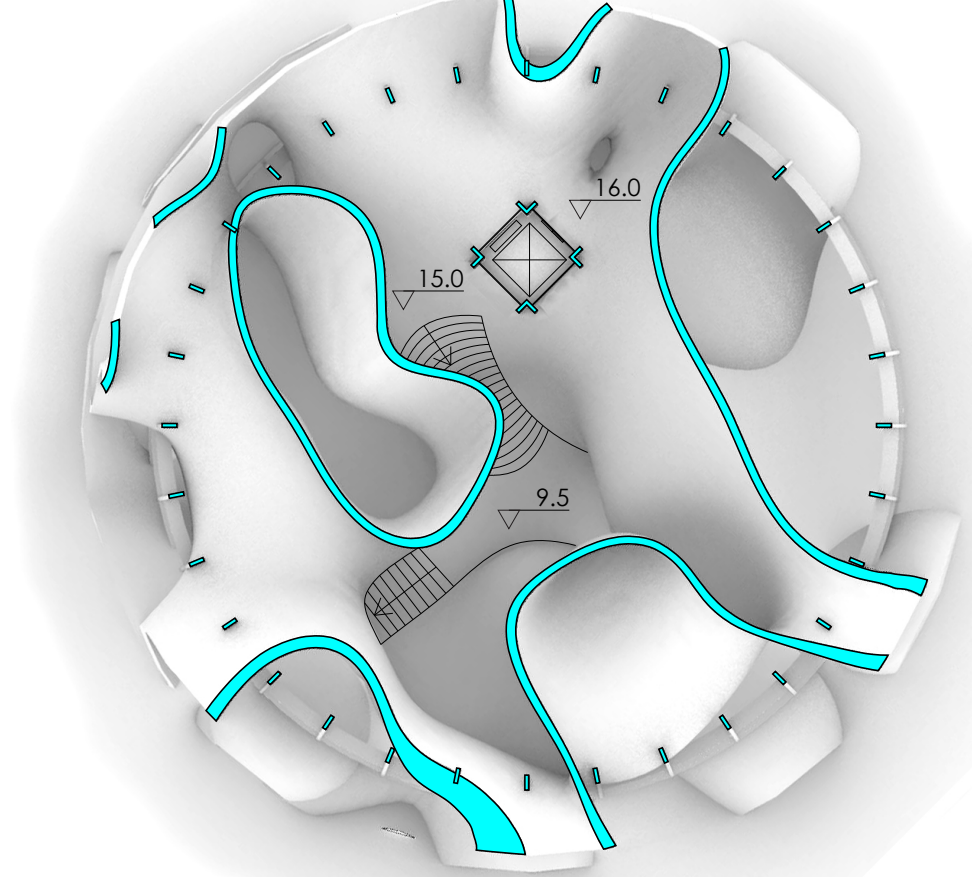
SKY CAFE

(138.0 FT)



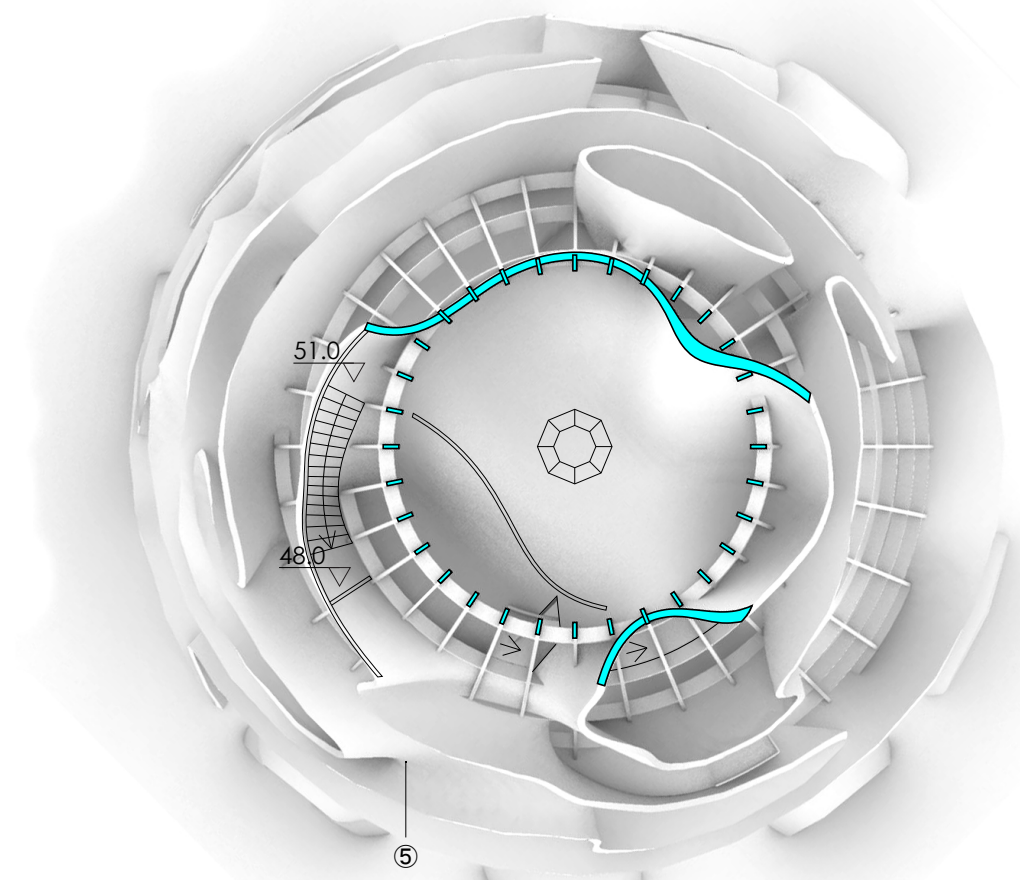
ART GALLERY

(52.0 FT)



LANTERN

(168.0 FT)



- ① Shop
- ② Volunteer Service Station
- ③ Management And Emergency Room
- ④ Self-Help Coffee Machine
- ⑤ Thin Film Solar Cells