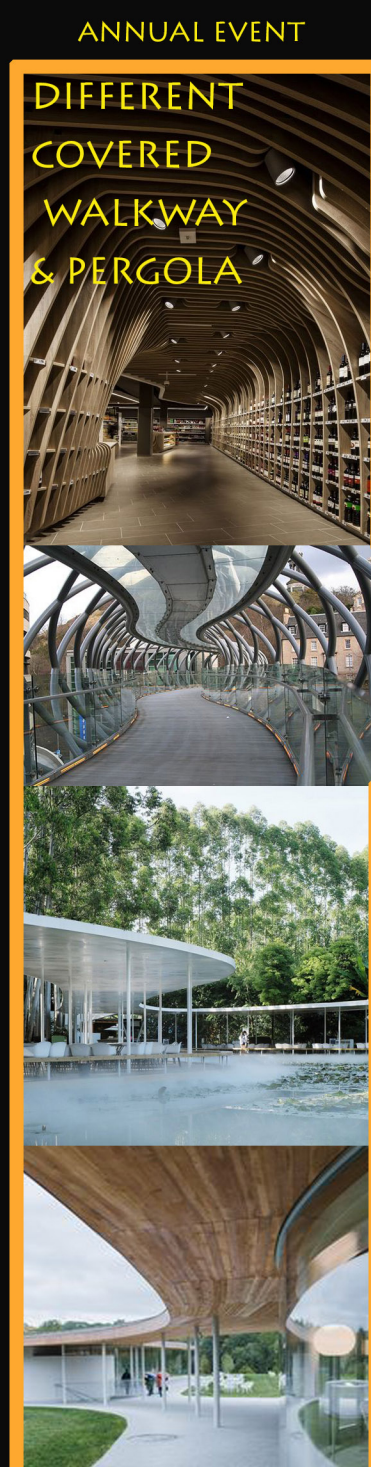
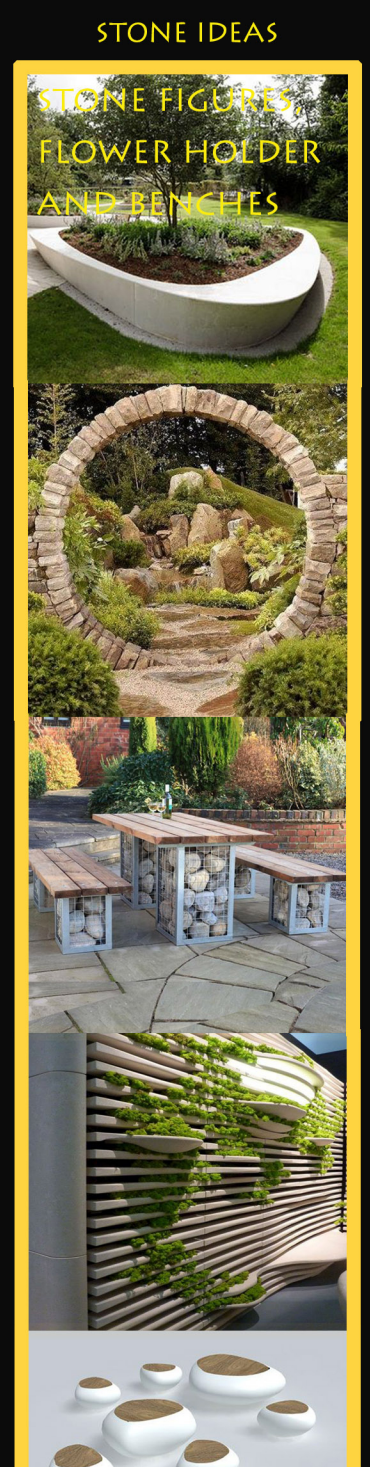
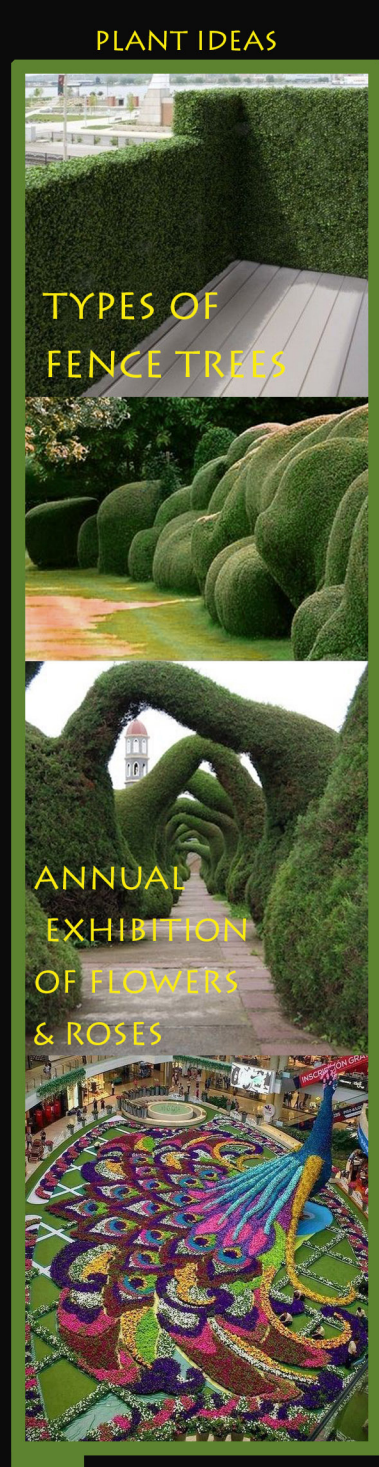
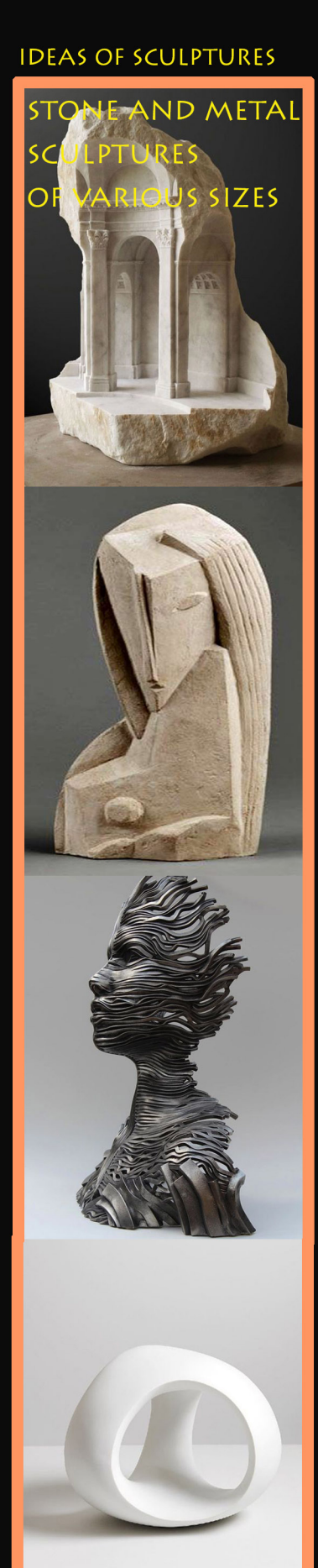
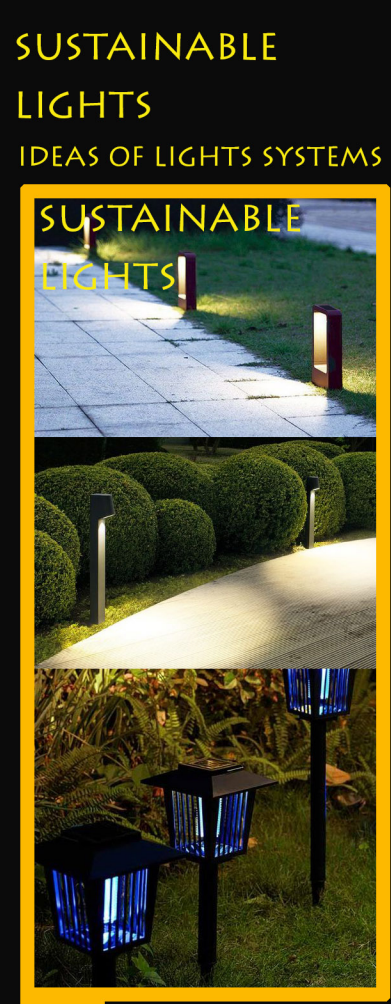


A drop from the top vast silicon vally vase



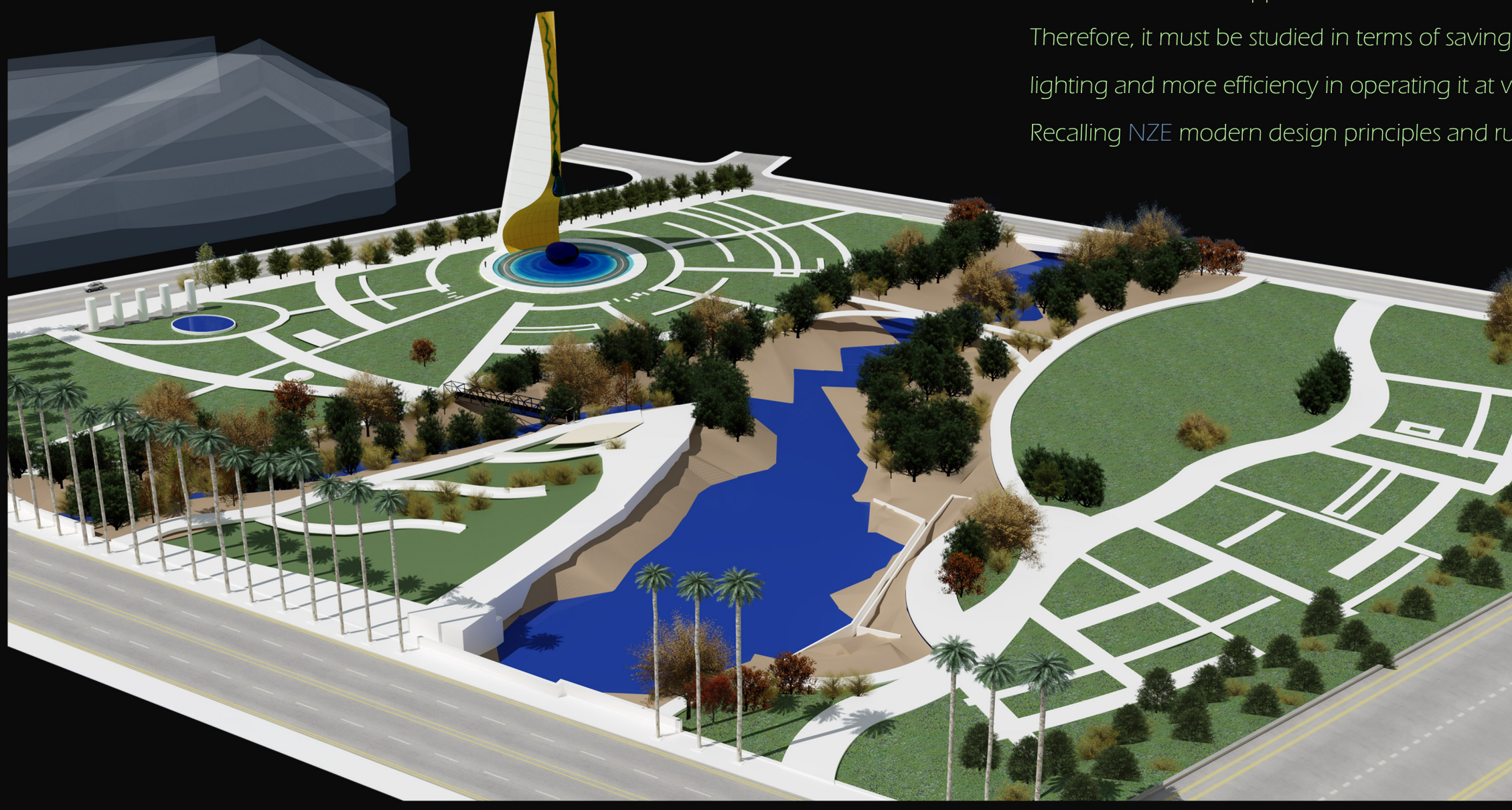
THE IDEA OF SOME WALKWAY IS PARTIALLY COVERED , AS WELL AS A COMPLETELY COVERED WALKWAY AND SOUNDPROOFING, AND FROM THE INSIDE IT WILL BE CHOSEN AS A TUNNEL OVER THE GROUND OR A TUNNEL-LIKE MUSEUM FOR THINGS THAT CAN BE PLACED IN IT AND DISTINCTIVE AND HELP TO ACTIVATE THE GARDEN AND INCREASE TOURISM AND COMMUNITY ACTIVITY WITH OTHER ELEMENTS IN THE SITE WILL BE PLACED.



ALL PICTURES THAT ARE IN THE POST ARE SUGGESTIONS FOR IDEAS TO ACTIVATE AND REVITALIZE THE GARDEN ON BOTH SIDES OF THE RIVER AND IT HAS A DISTINCTIVE COLOR FRAME AROUND IT AND IT HAS A REFERENCE ON THE PUBLIC SITE OF THE GARDEN SHOWING THE COLORS SUGGESTED IDEAS WITH PICTURES ATTACHED TO THE POST.

Net-Zero Energy building:
The building in all its mass and various parts and its location in the plot of land on the western side. It has a height of up to 200 feet. It requires operating a lot of energy, electrical and water appliances, maintenance and service facilities at the site. Therefore, it must be studied in terms of saving energy, lighting and more efficiency in operating it at various times and seasons. Recalling NZE modern design principles and rules that include

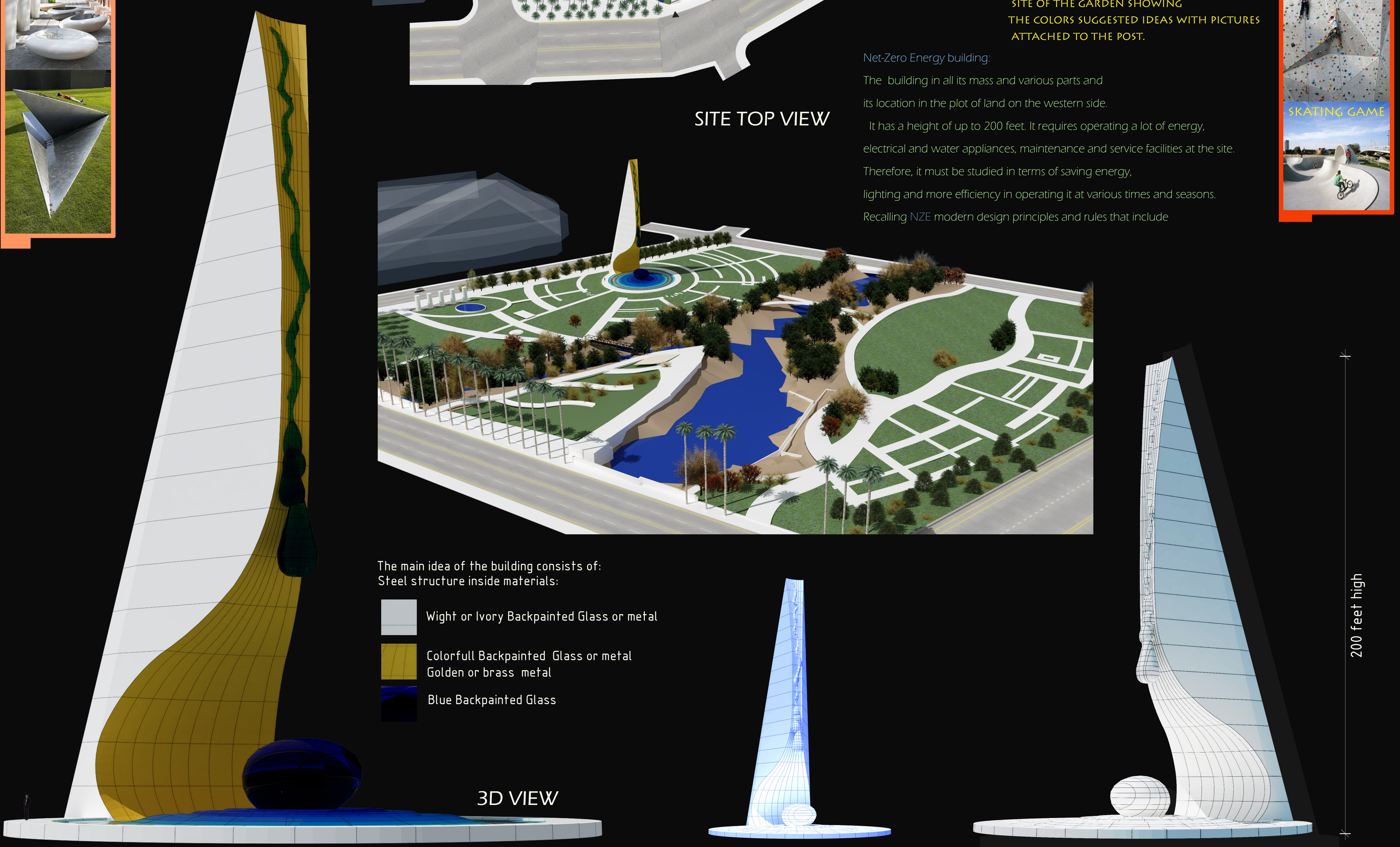
SITE TOP VIEW



The main idea of the building consists of:
Steel structure inside materials:

- Wight or Ivory Backpainted Glass or metal
- Colorfull Backpainted Glass or metal Golden or brass metal
- Blue Backpainted Glass

3D VIEW



Idea of an urban planning project for the Arena Green Park at Guadeloupe River

A drop from the top vast silicon vally vase

A drop from the top of the pen

Pen, jar and drop of water

A large vase at Silicon Valley in San Jose (vast silicon vally vase).

The idea is a steel frame structure (a cone slide , a jar slide and drop). It is coated with various materials,

metal, glass, brass, and lightings from inside the building.

The lighting inside the water drop reflects all the spectra of life.

Explanation of the philosophical idea of the designer:

From a drop of water fell from the tip of a pen from a balcony in a cloud in the sky.

Bring life with him from the top.

These drops meet in valleys, like a torrent of pens, and each pen writes a portion of history.

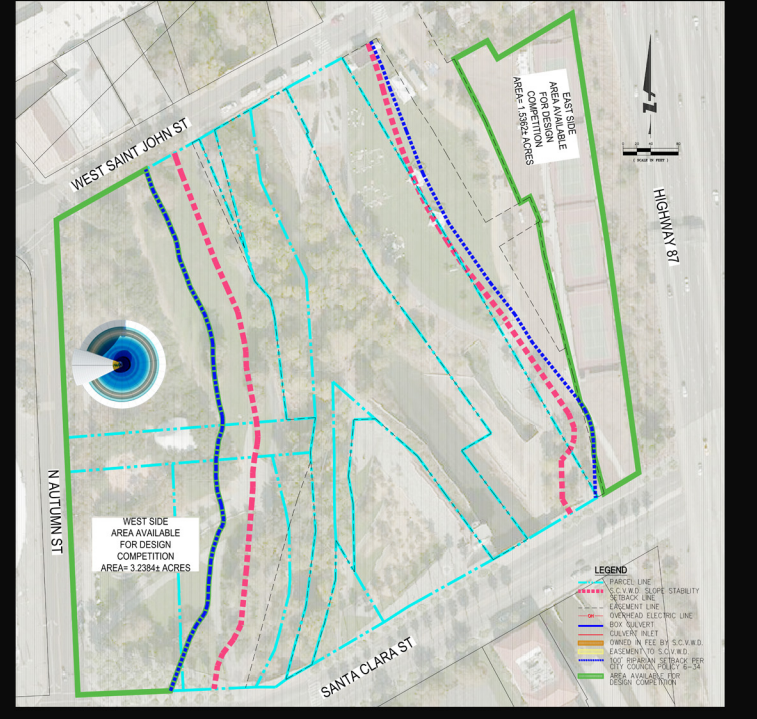
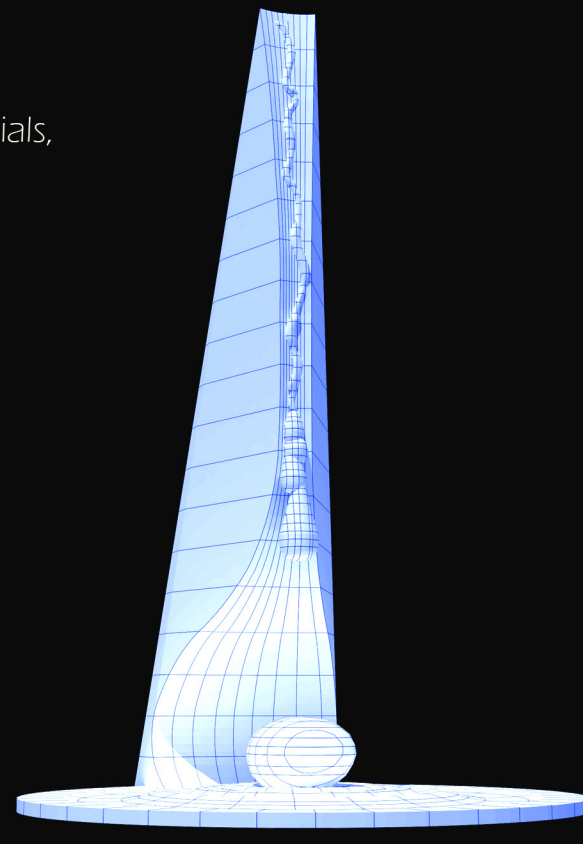
Write a trail, write an event. He writes a new challenge on this earth.

It evokes the fragrance of ideas from an ancient past that returns to the pulse again ... drawing the future with a present pen.

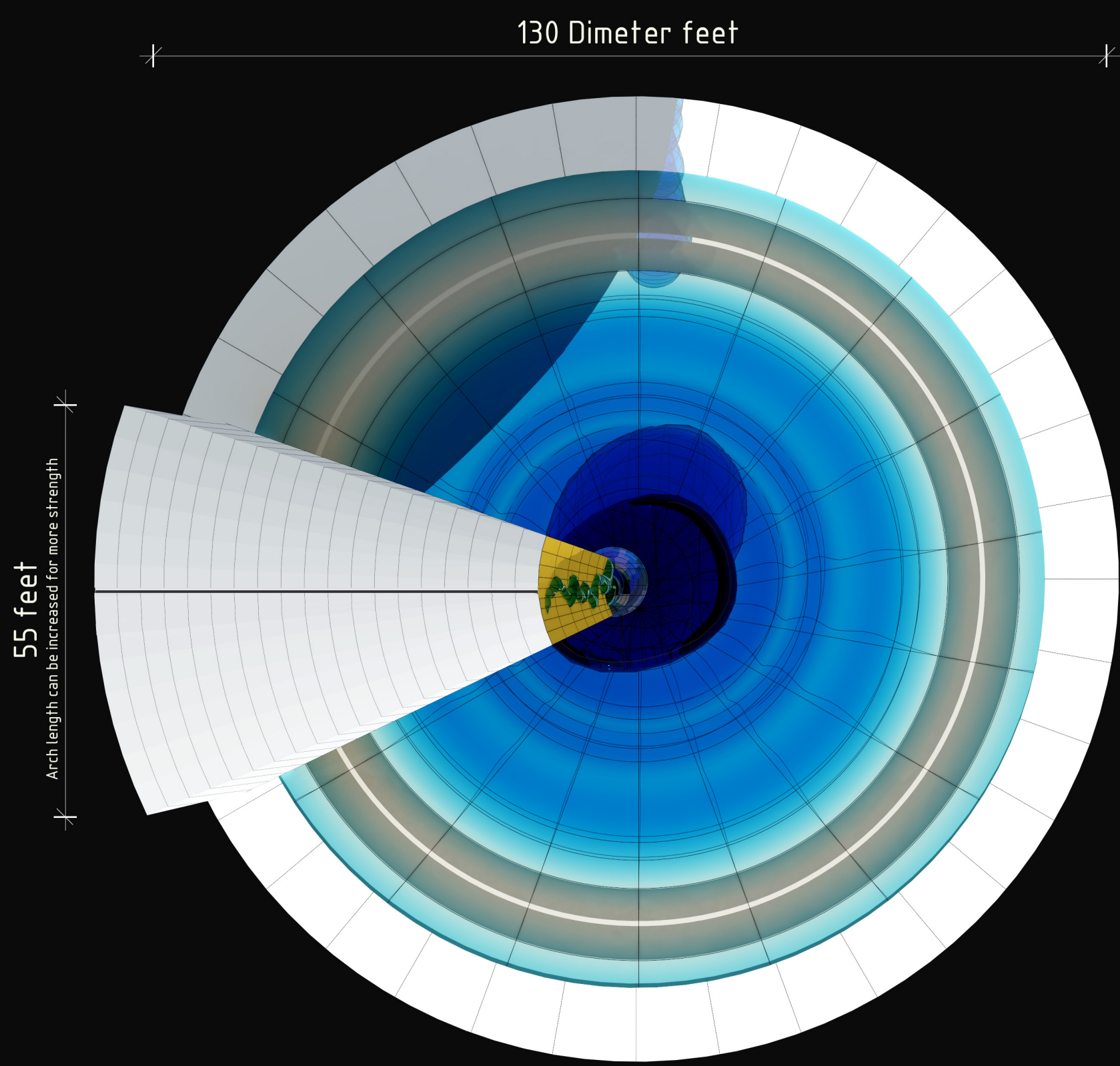
Drops and waves that weave life bonds descend in sand, pulsating with a mixture of accuracy and randomness on the surface of the water.

One day, the past of water will reveal the secret of the future of life, teaching us the language of water that moves,

sends, and pulses the waves that illuminate the dust particles that make up the fabric of organisms.



- BRAIN STORM WORDS:
- OBLOQUE PHARAONIC
 - SILICON VALLEY
 - PEN BUILDING
 - EFFEL TOWER
 - PISA TOWER
 - SAN JOSE
 - VOLCANO
 - SURFACE
 - THE PEN
 - OBELISK
 - CLOUD
 - CONE
 - DROP
 - JAR



TOP VIEW

Net-Zero Energy building:

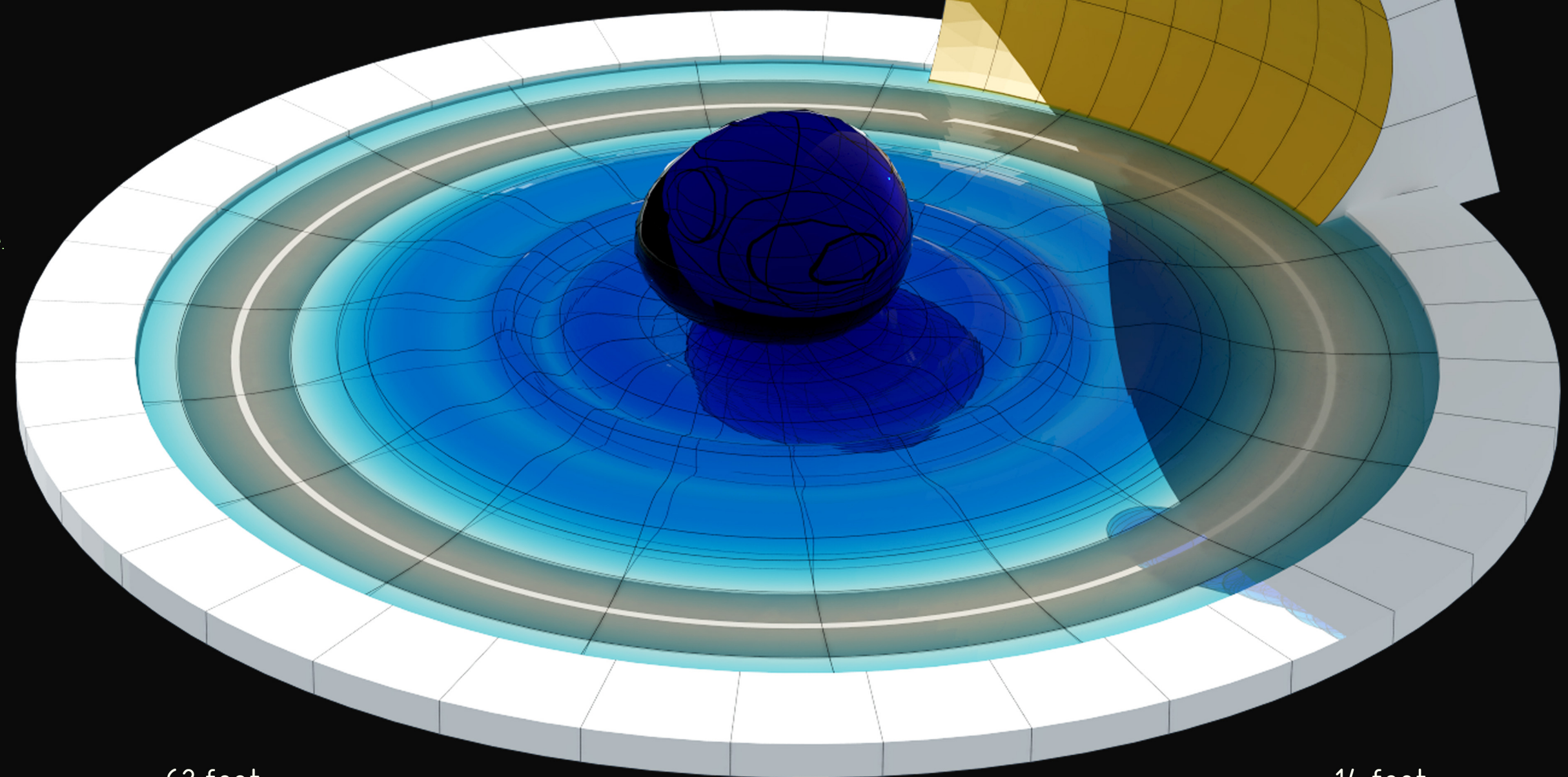
The building in all its mass and various parts and its location in the plot of land on the western side.

It has a height of up to 200 feet. It requires operating a lot of energy, electrical and water appliances, maintenance and service facilities at the site.

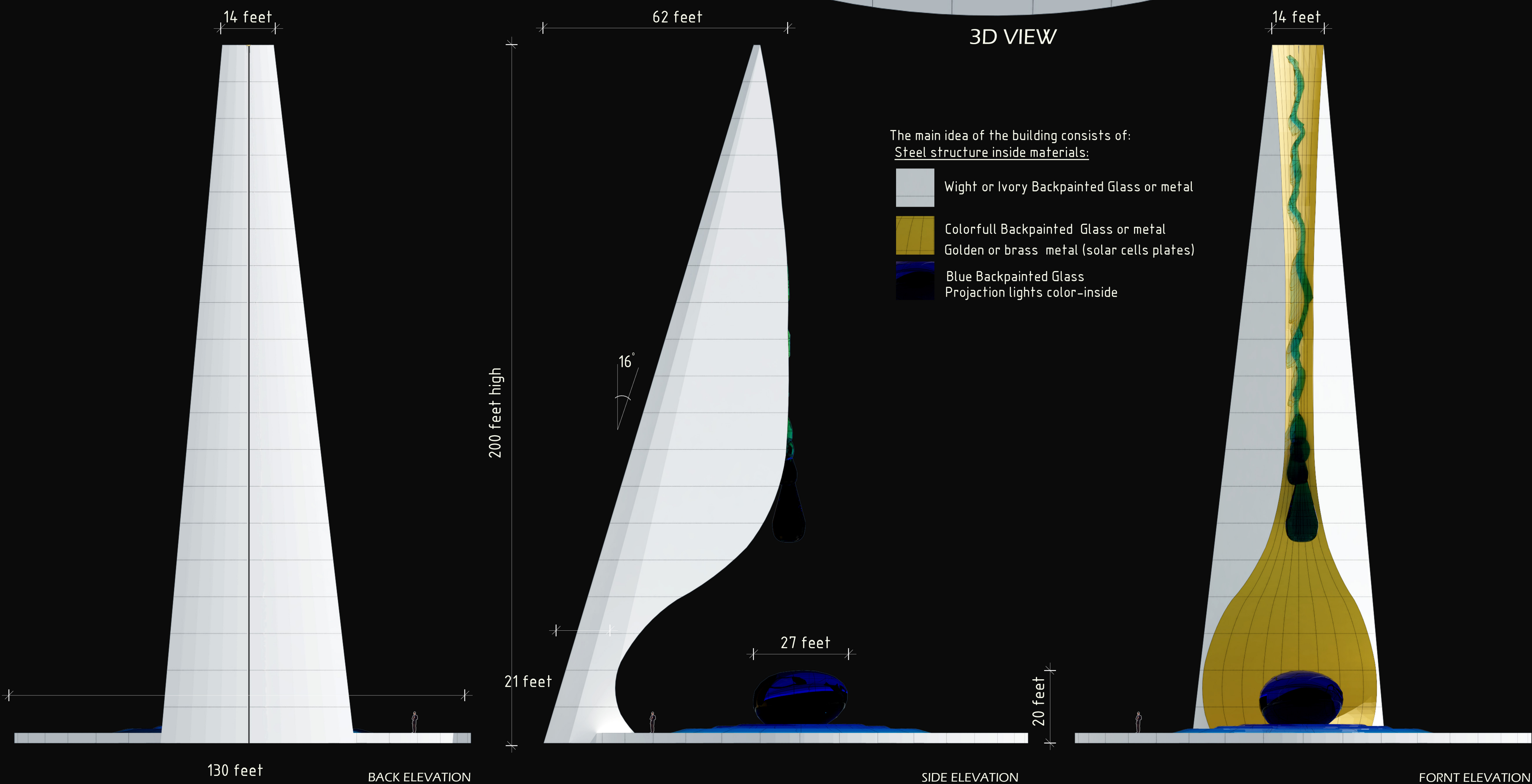
Therefore, it must be studied in terms of saving energy,

lighting and more efficiency in operating it at various times and seasons.

Recalling NZE modern design principles and rules that include



3D VIEW



The main idea of the building consists of:
Steel structure inside materials:

- White or Ivory Backpainted Glass or metal
- Colorfull Backpainted Glass or metal
Golden or brass metal (solar cells plates)
- Blue Backpainted Glass
Projection lights color-inside