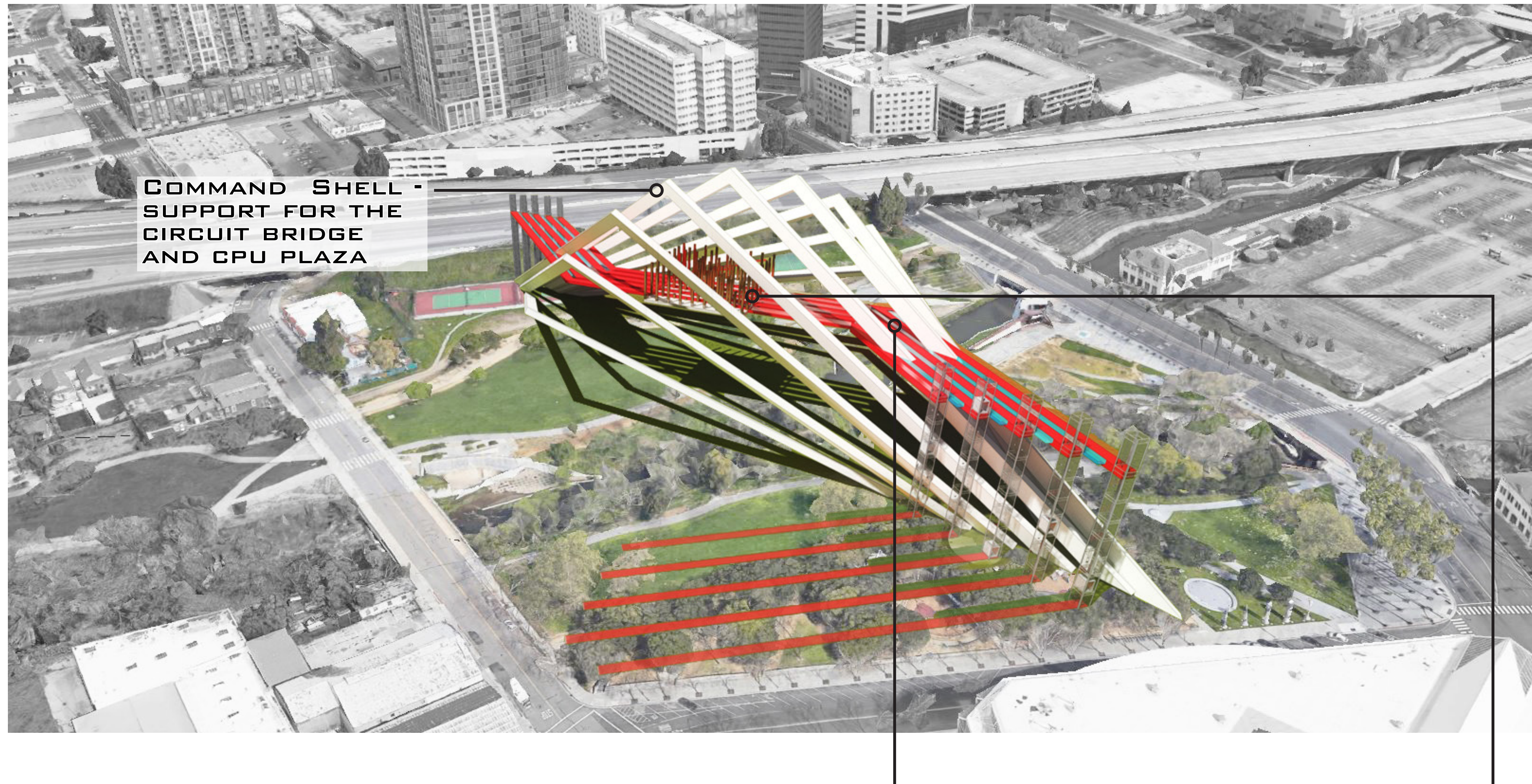
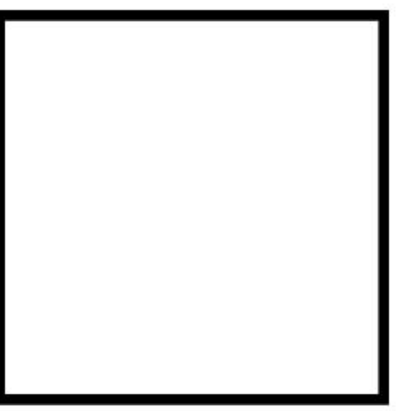
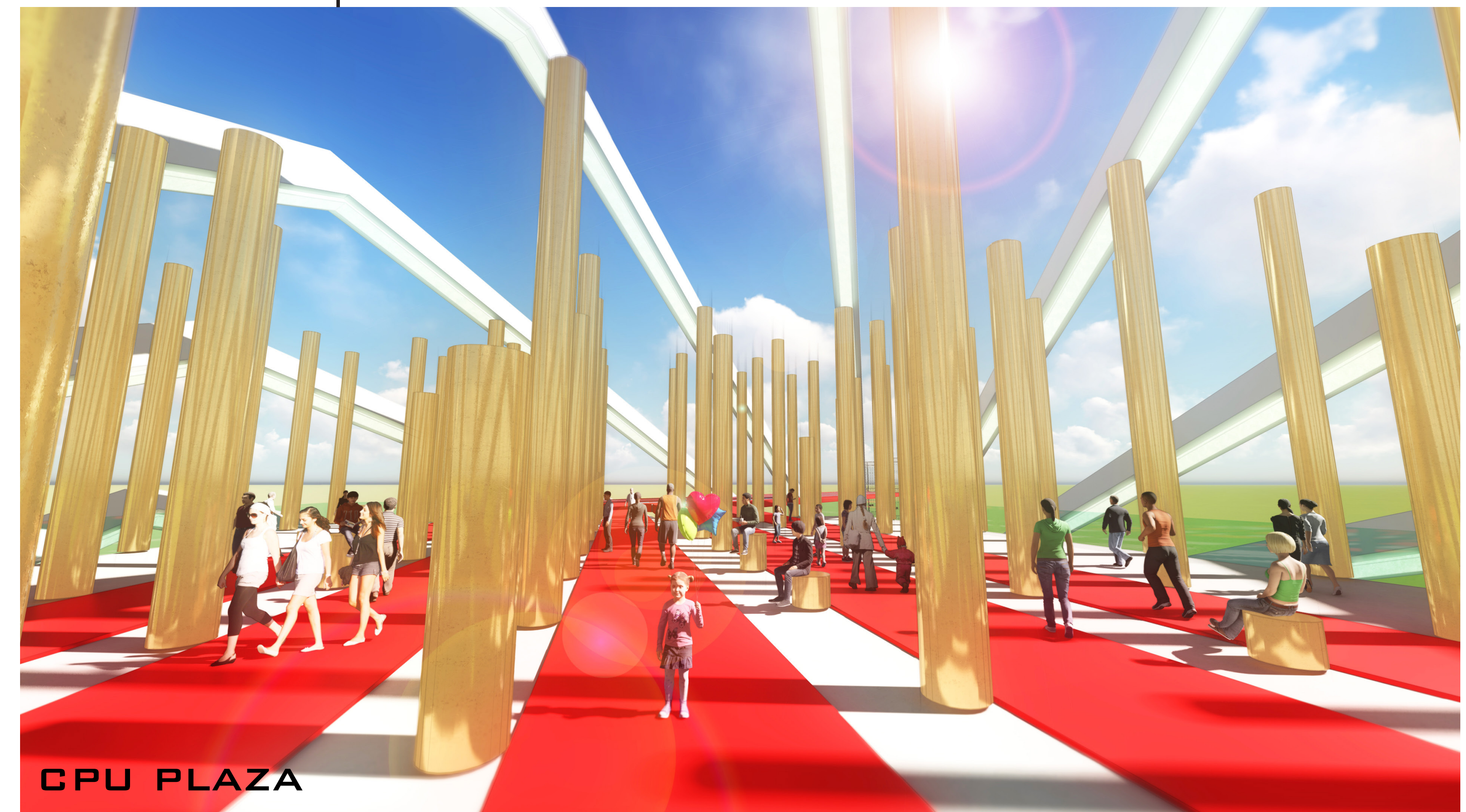
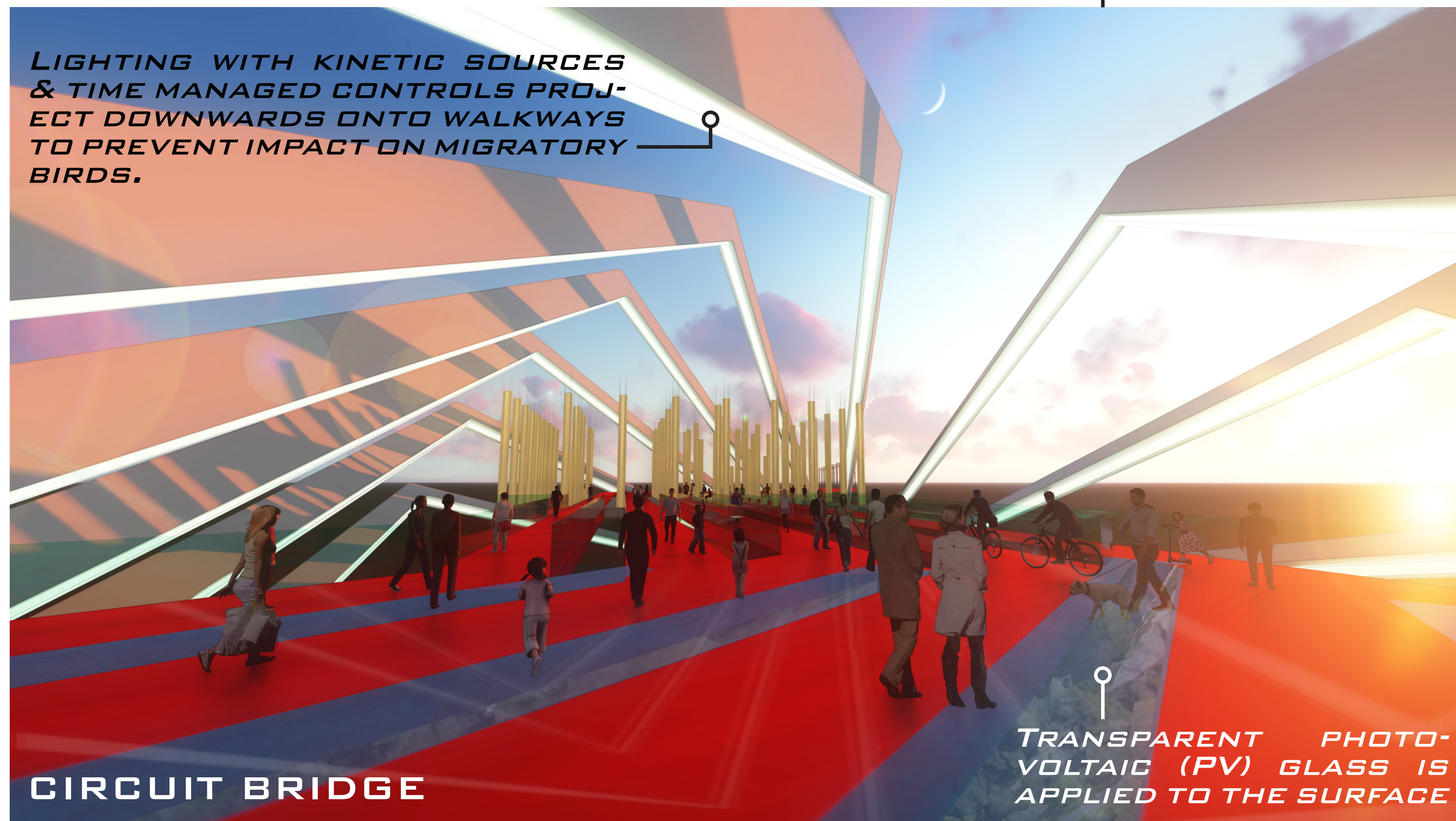


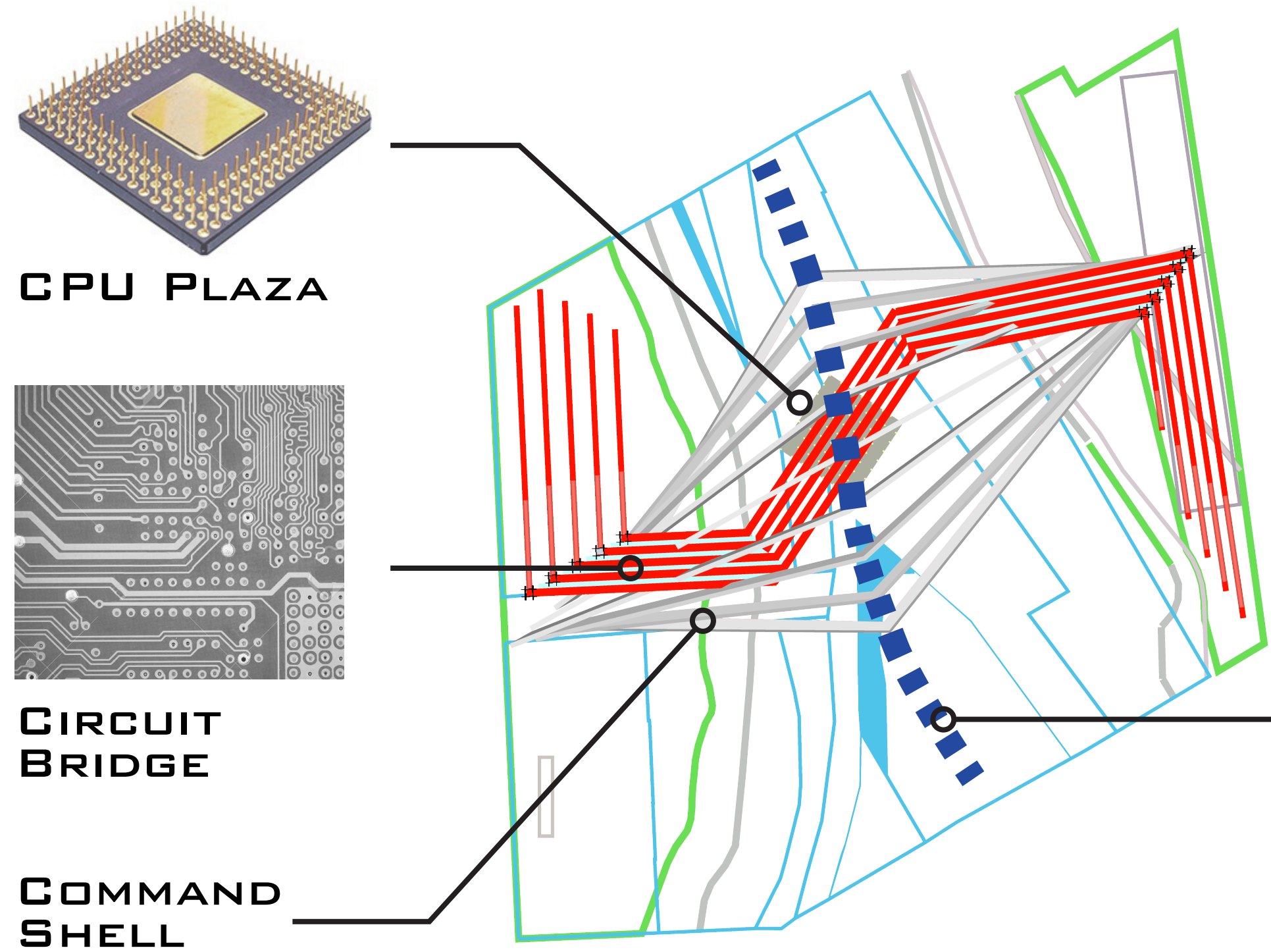
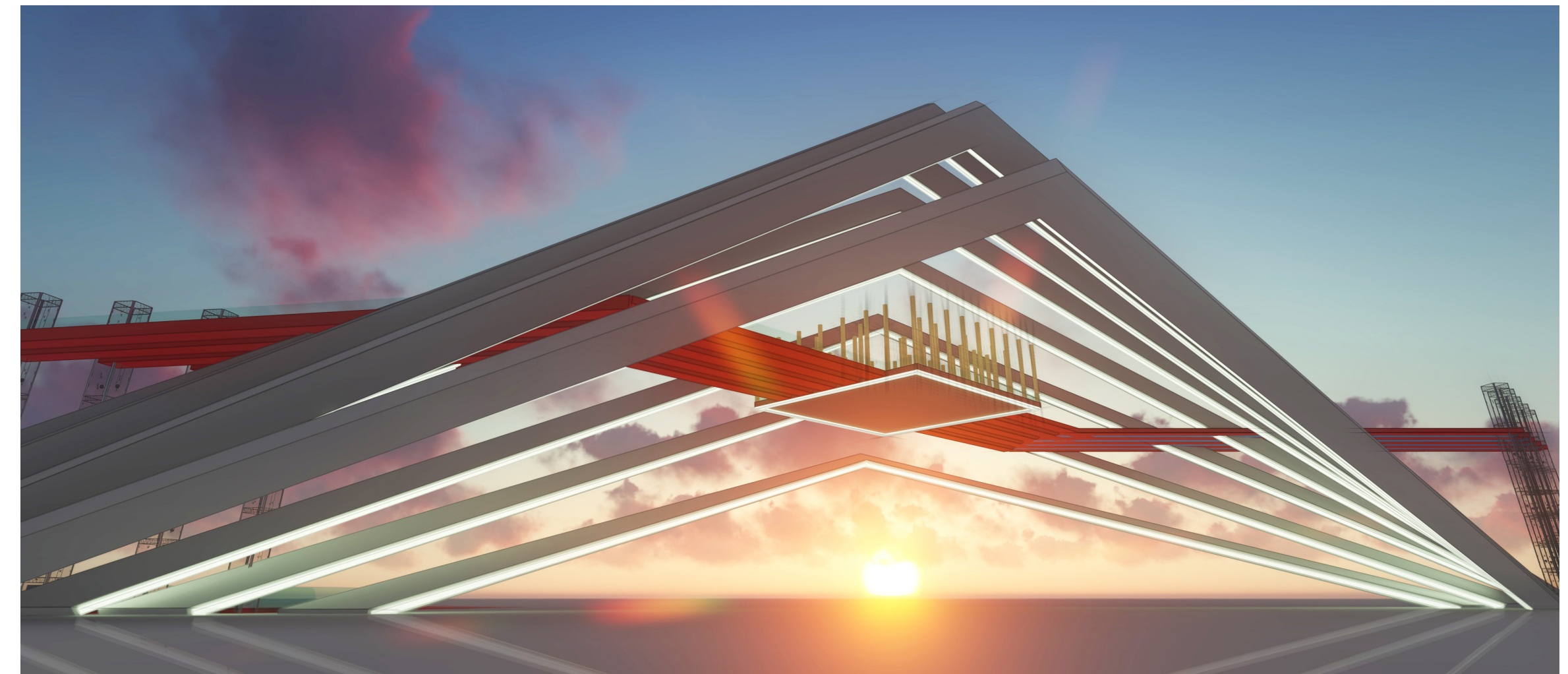
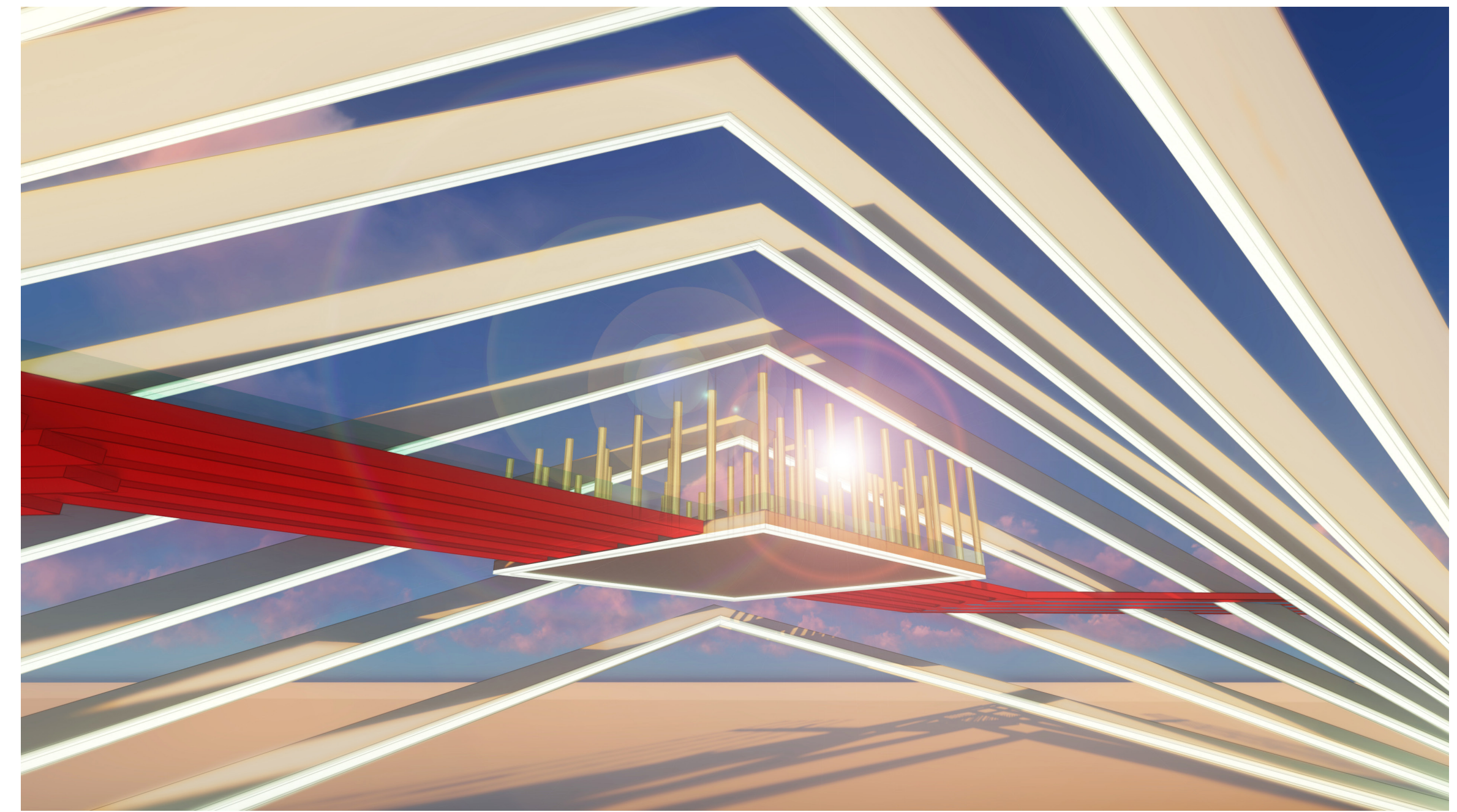
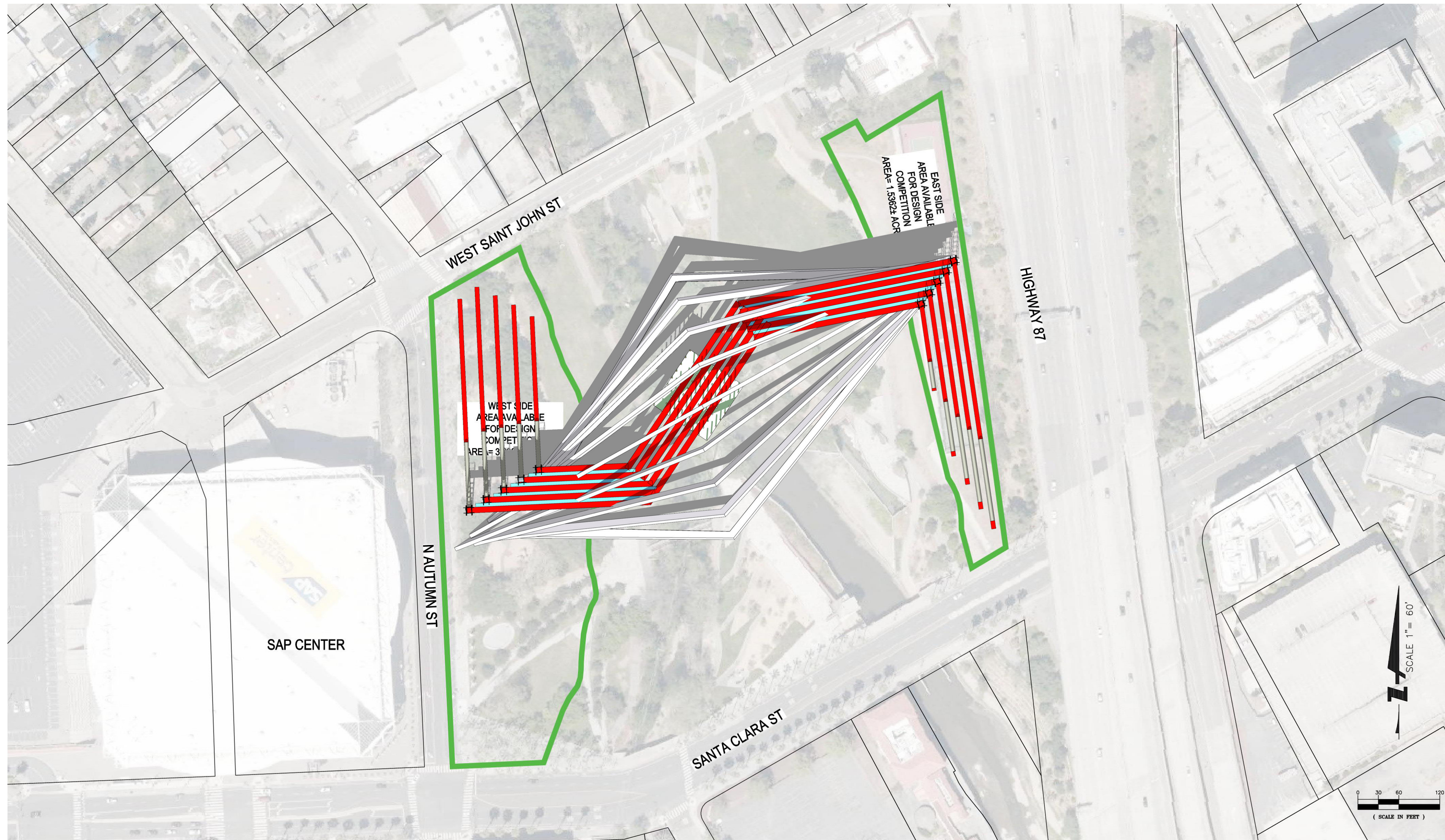
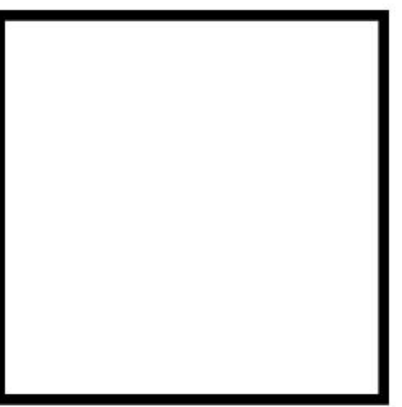
CPU OF THE WORLD - SAN JOSÉ



The CPU represents the meritocracy of ideas found in San José's diverse inhabitants. The design plays on the idea of shrinking down to computer scale and imagining oneself flowing as data. The welcoming design will draw people in to exercise or ride bicycles on the Circuit Bridge. The "Command Shell" is a sea shell shaped support surrounding the bridge and is a physical manifestation of a computer's "command shell". Its triangular shape matches the confluence point of the rivers, drawing eyes to the sky to admire its form. The CPU Plaza showcases "Golden Pins" used as a community gathering spot.



CPU OF THE WORLD - SAN JOSÉ



THE COMMAND SHELL USES THE TRIANGLE SHAPE TO MATCH THE CONFLUENCE POINT OF THE RIVERS, RAISING THE SHAPE TO THE SKY FOR EVERYONE TO ADMIRE AND ENJOY

THE ANGLE OF THE SHELL AND CPU FOLLOWS THE FLOW OF THE RIVER

