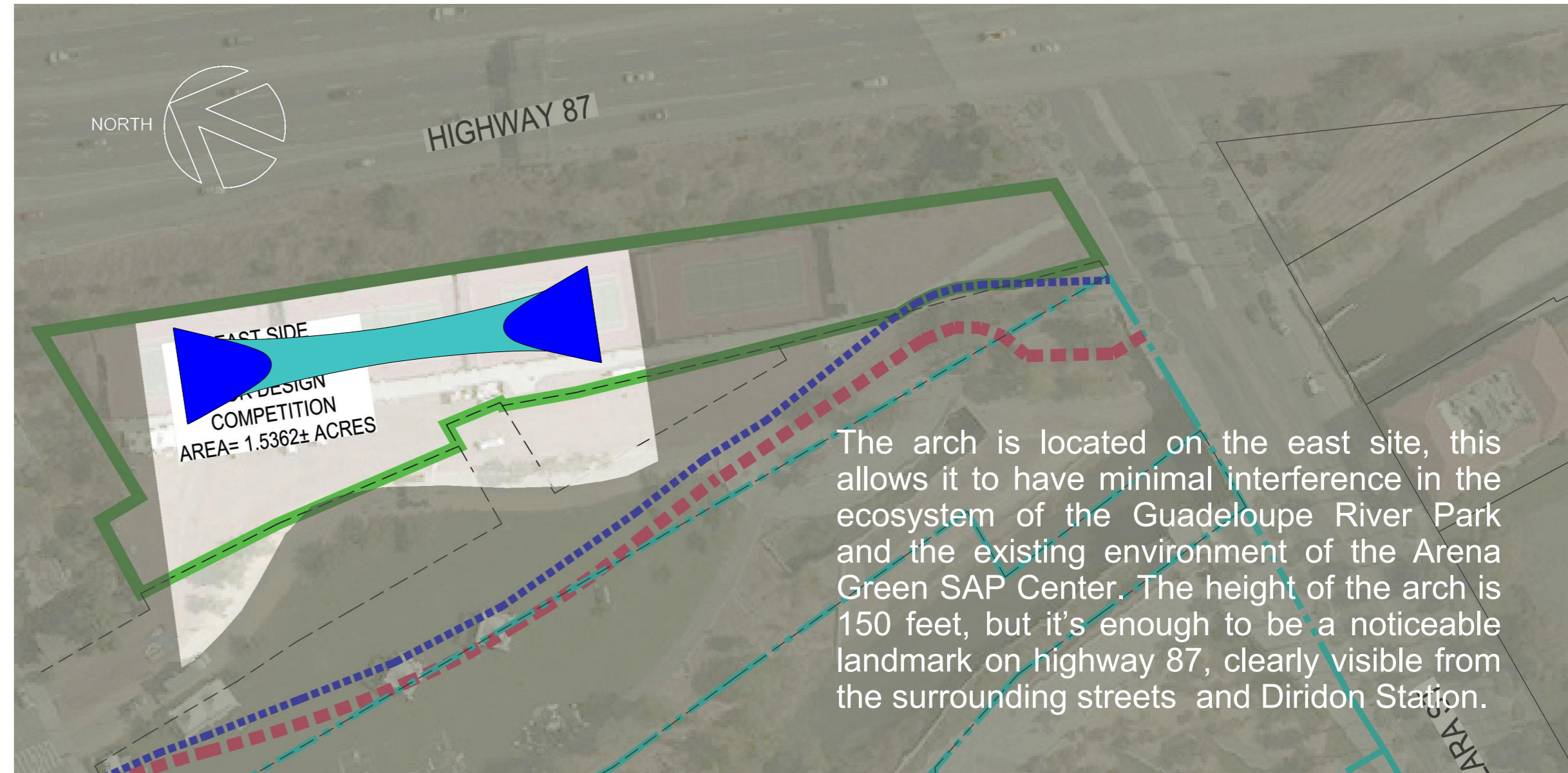


NEVER IN THE WORLD HAS ANYONE SEEN CABLE STAYED ARCH!

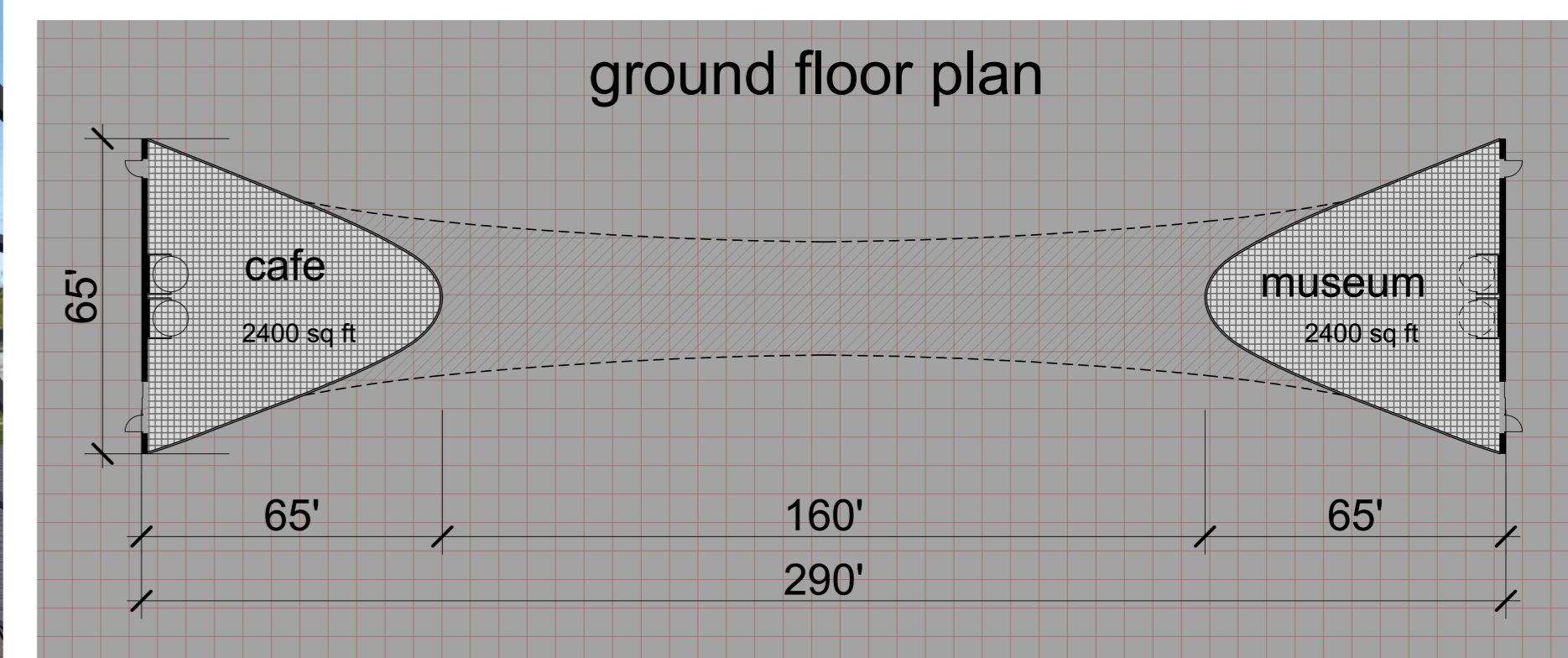
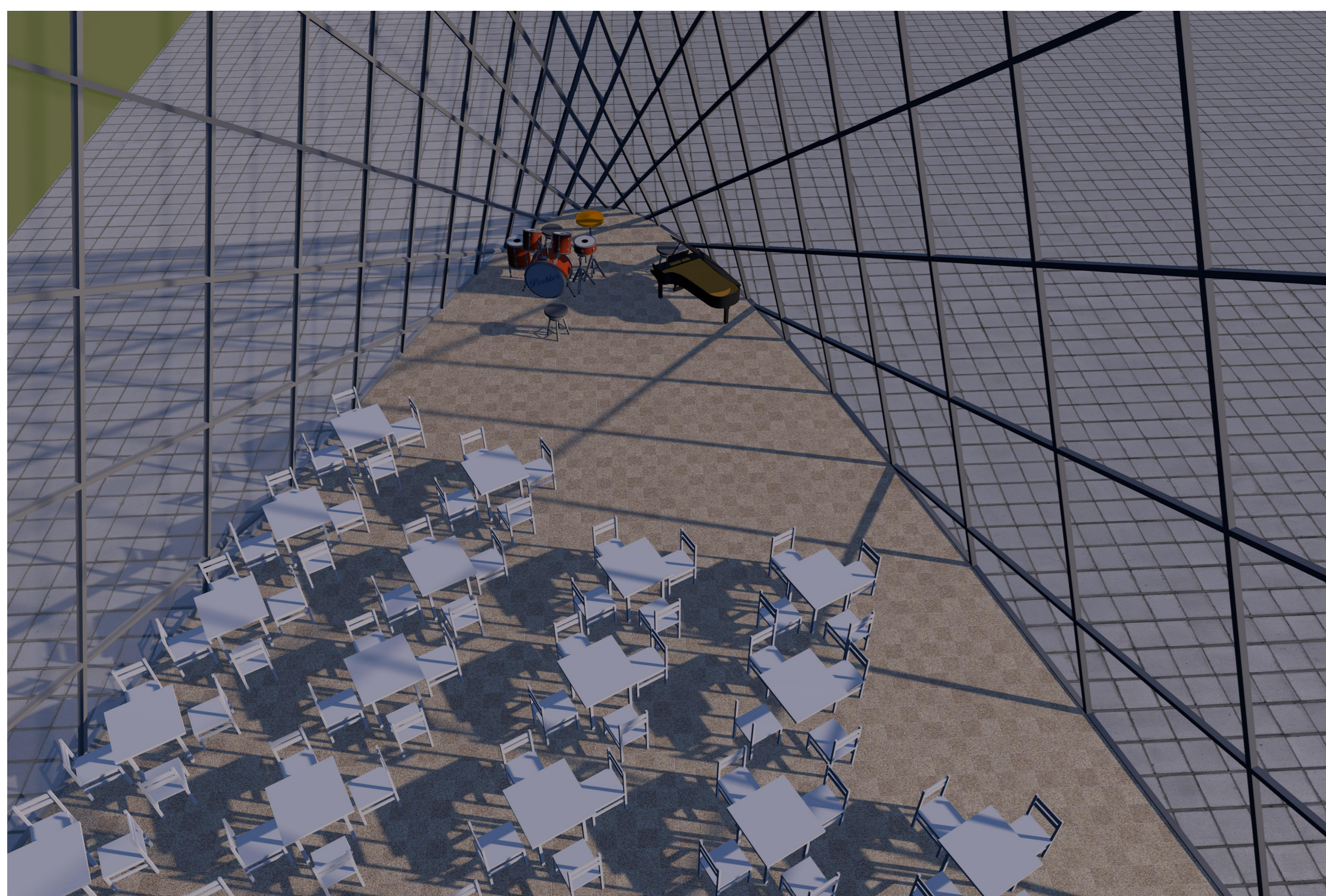
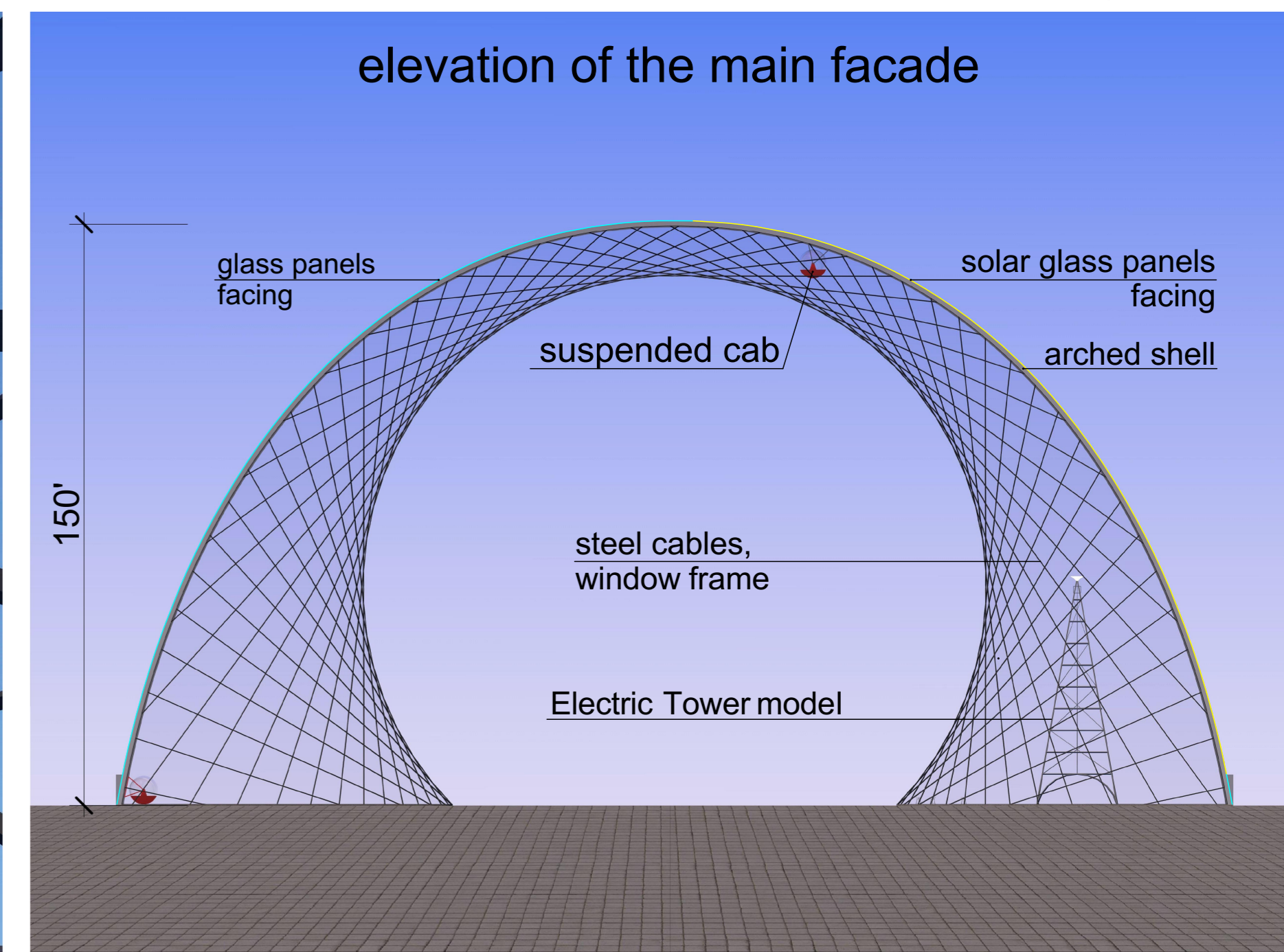
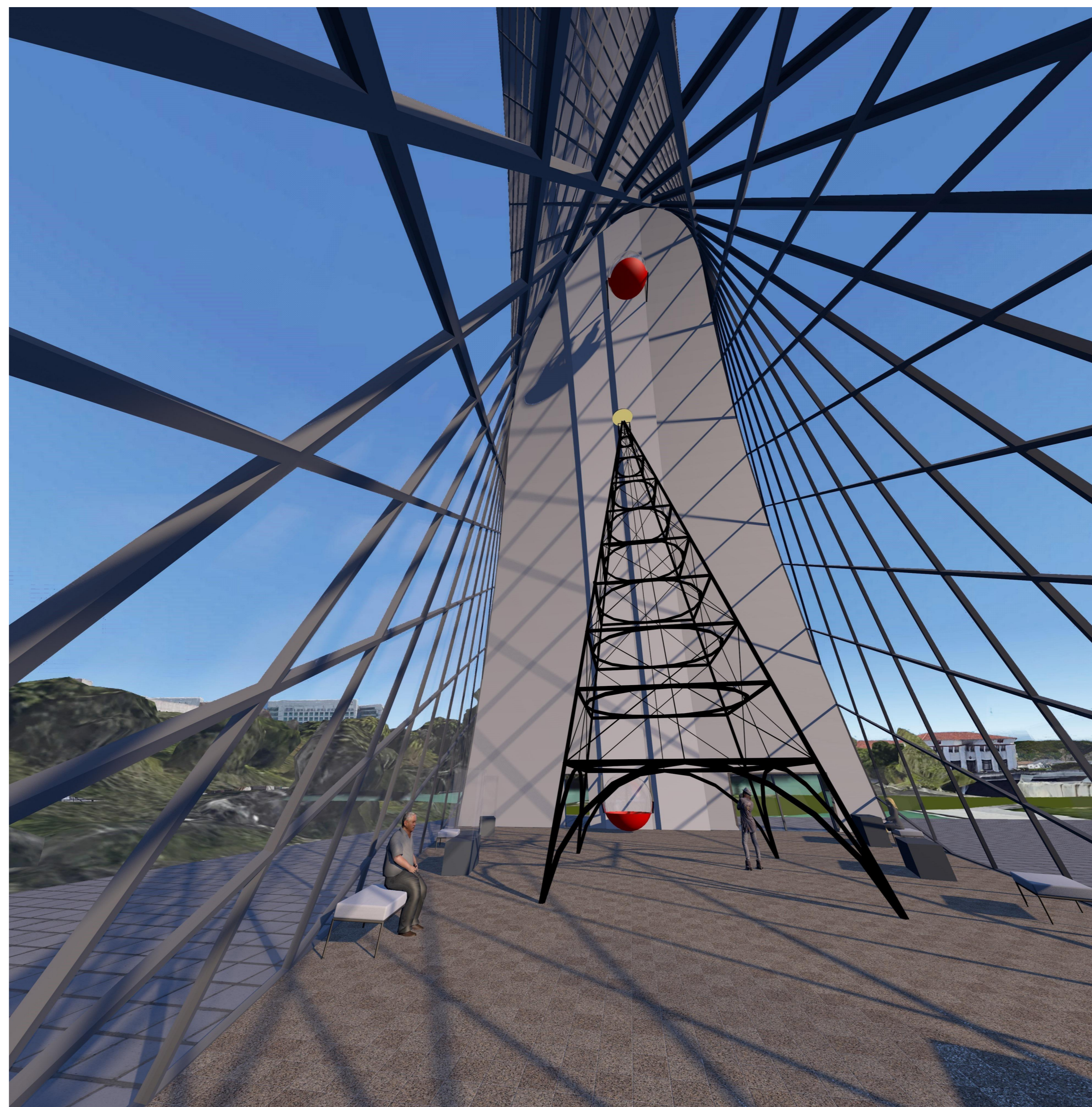
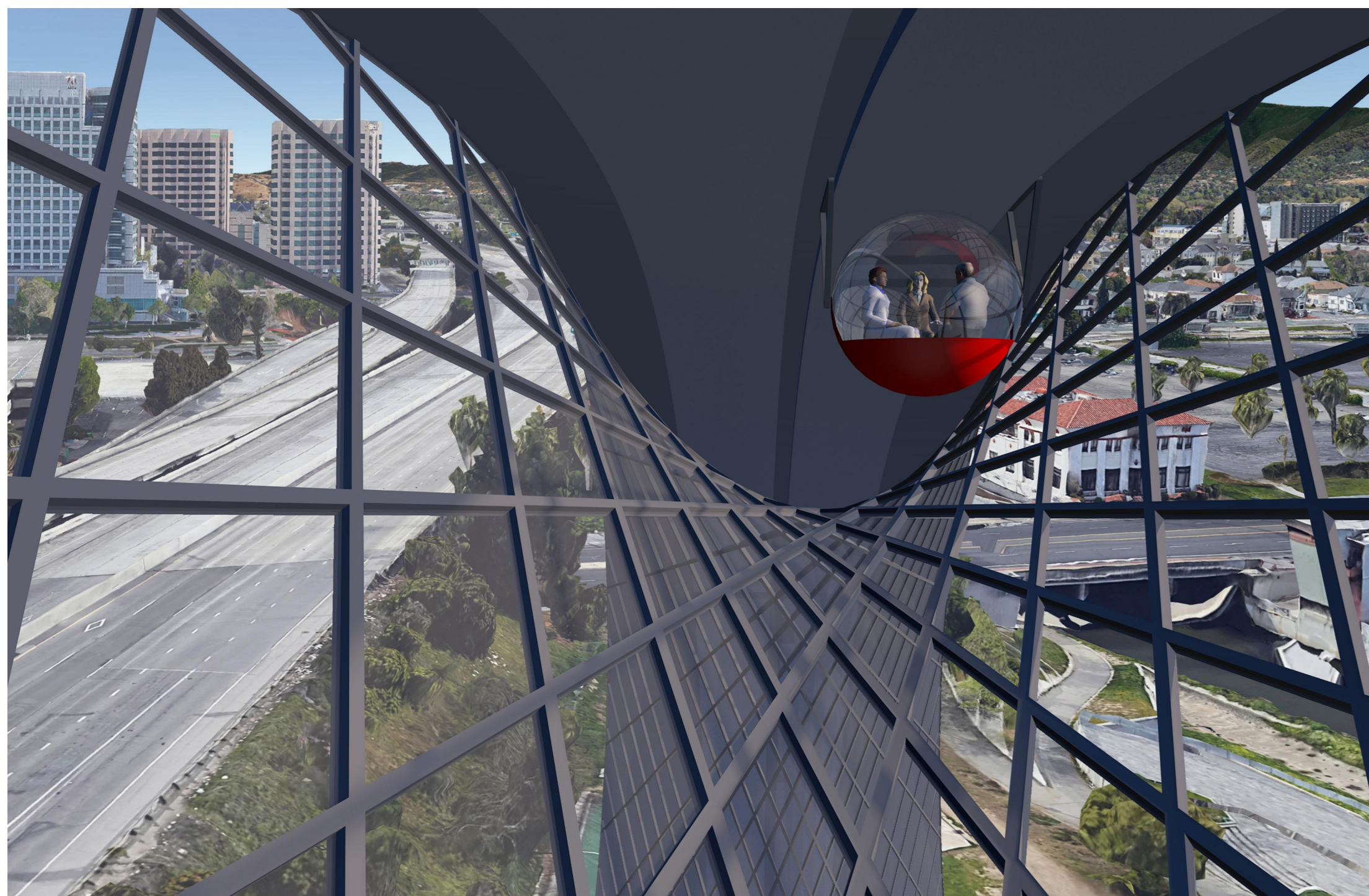
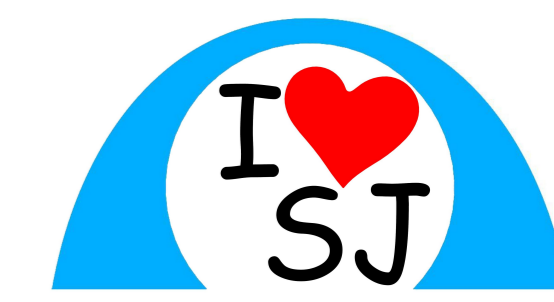
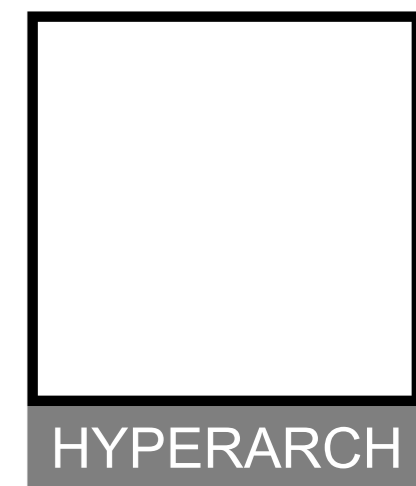
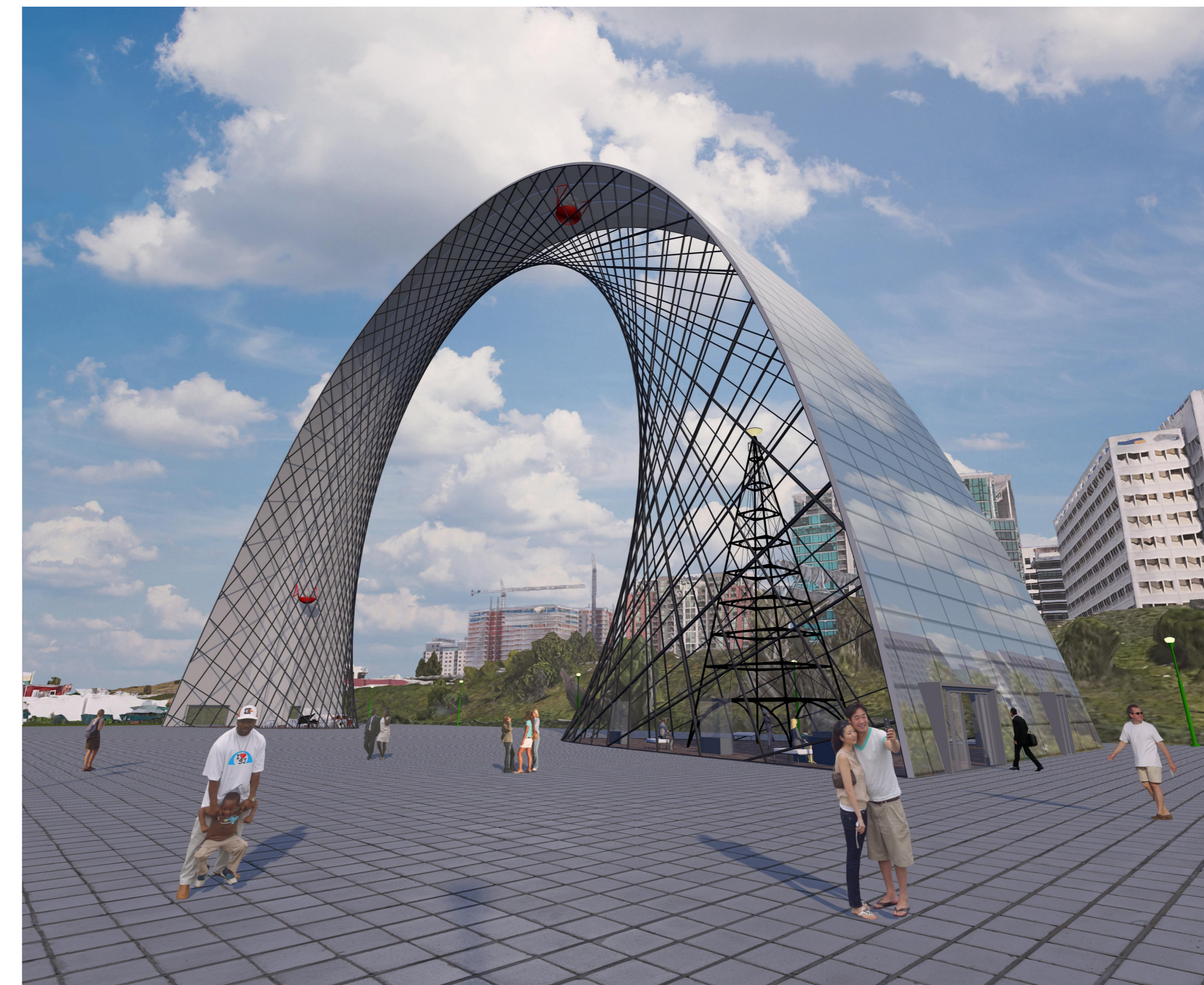
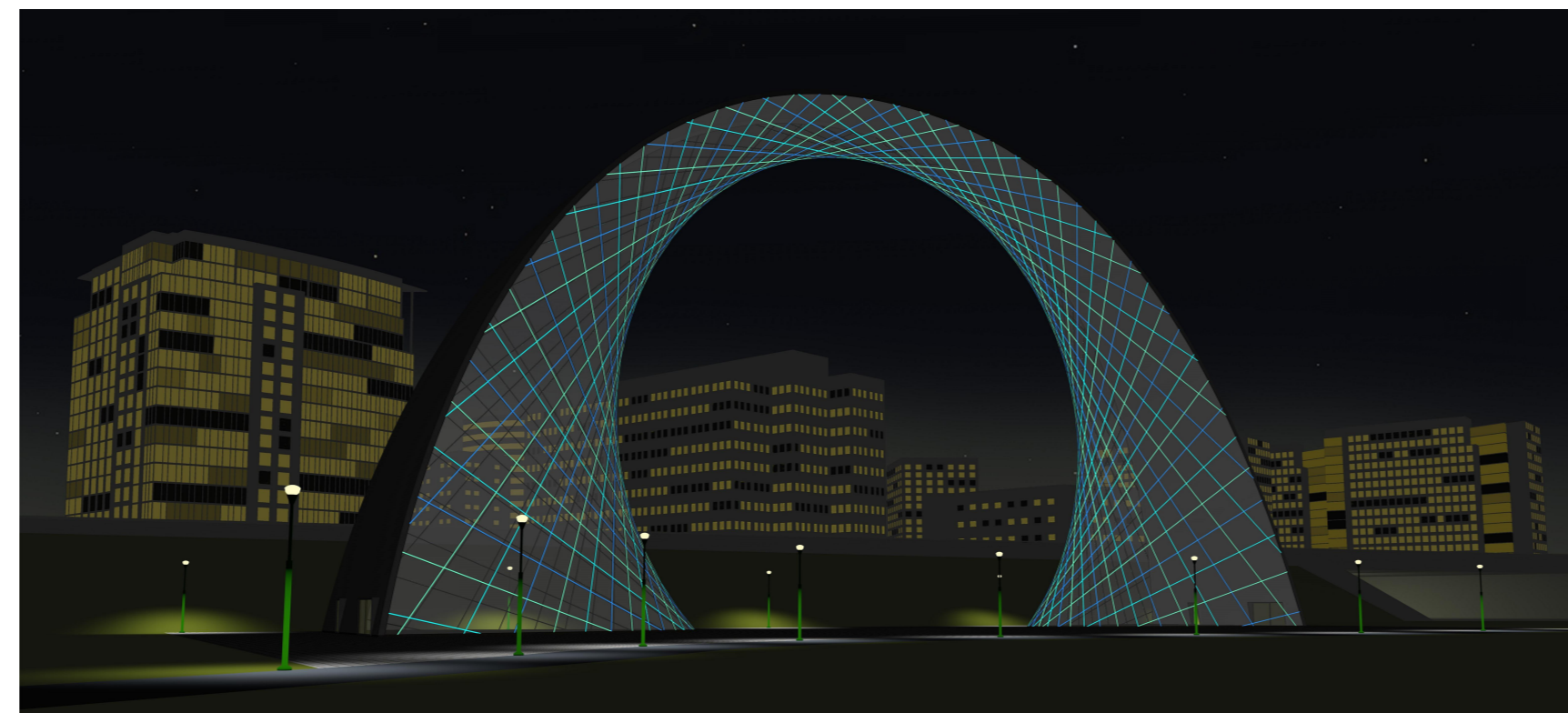
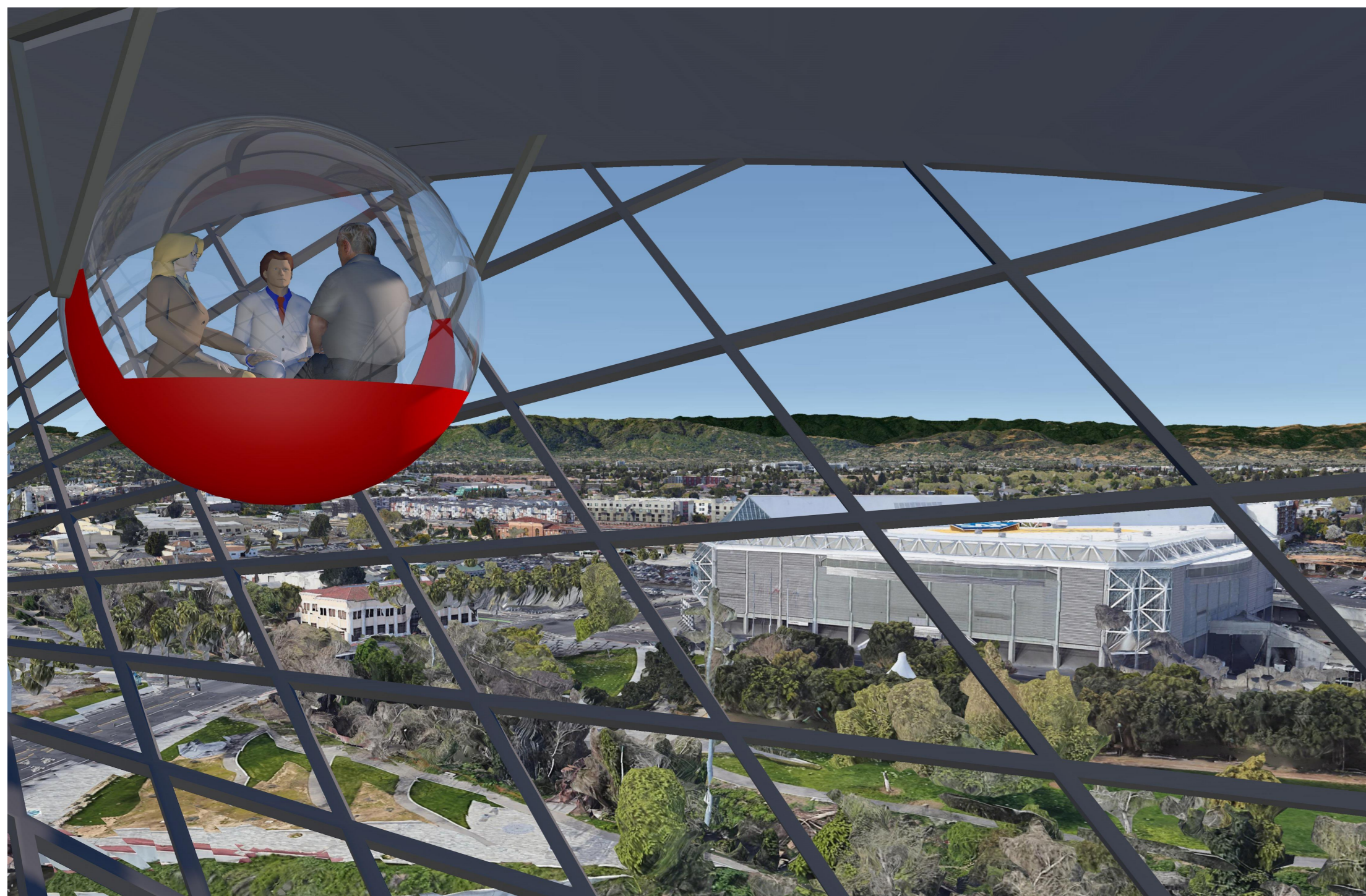
Is this not a reason for such arch to become a Silicon Valley landmark? It have not only an original construction, but also an original shape; a catchy and simple silhouette, which could be a symbol. Why arch, not tower? Nowadays, when there are TV towers in any big city, it's hard to surprise someone with a 200-foot-tall tower. A tower 150-200 feet high is a more massive and visible construction. The bearing structure of Huperarch is reinforced concrete or steel arched shell. It is pulled by steel cables, so the whole structure is strong but light. Straightforward cables make up the spectacular form of a hyperbolic paraboloid, therefore the name Hyperarch.

Such structure (but no for arches) began to be used in construction around the same time that the San Jose Light Tower was built, thence the arch carries the spirit of the time of existence of the Light Tower in a modern or future interpretation. A stained-glass window frame is mounted on the cables, and a large glazed building is obtained from the arch. The shape and design of the building provide ample opportunities for light illumination - interior light, LED strip on stained glass binding. Hyperarc can become a scene portal for laser and holographic shows. Arched shell is facing with glass panels, including approximately 7,000 square feet solar panels on the south side as net-zero energy design implementation.

HYPERARCH



The arch is located on the east site, this allows it to have minimal interference in the ecosystem of the Guadeloupe River Park and the existing environment of the Arena Green SAP Center. The height of the arch is 150 feet, but it's enough to be a noticeable landmark on highway 87, clearly visible from the surrounding streets and Diridon Station.



In the wings of the arch, 2 rooms are formed with an area of 2,400 square feet each. One can house cafe, and another the Electric Tower Museum with Tower model on a scale of 1:4. There are 2 rows of rails under the ceiling of the arch for suspended cabs on which the visitor can drive from one room to another, observing the unusual interior of the arch and the surroundings from a height of 140 feet.