

Talos

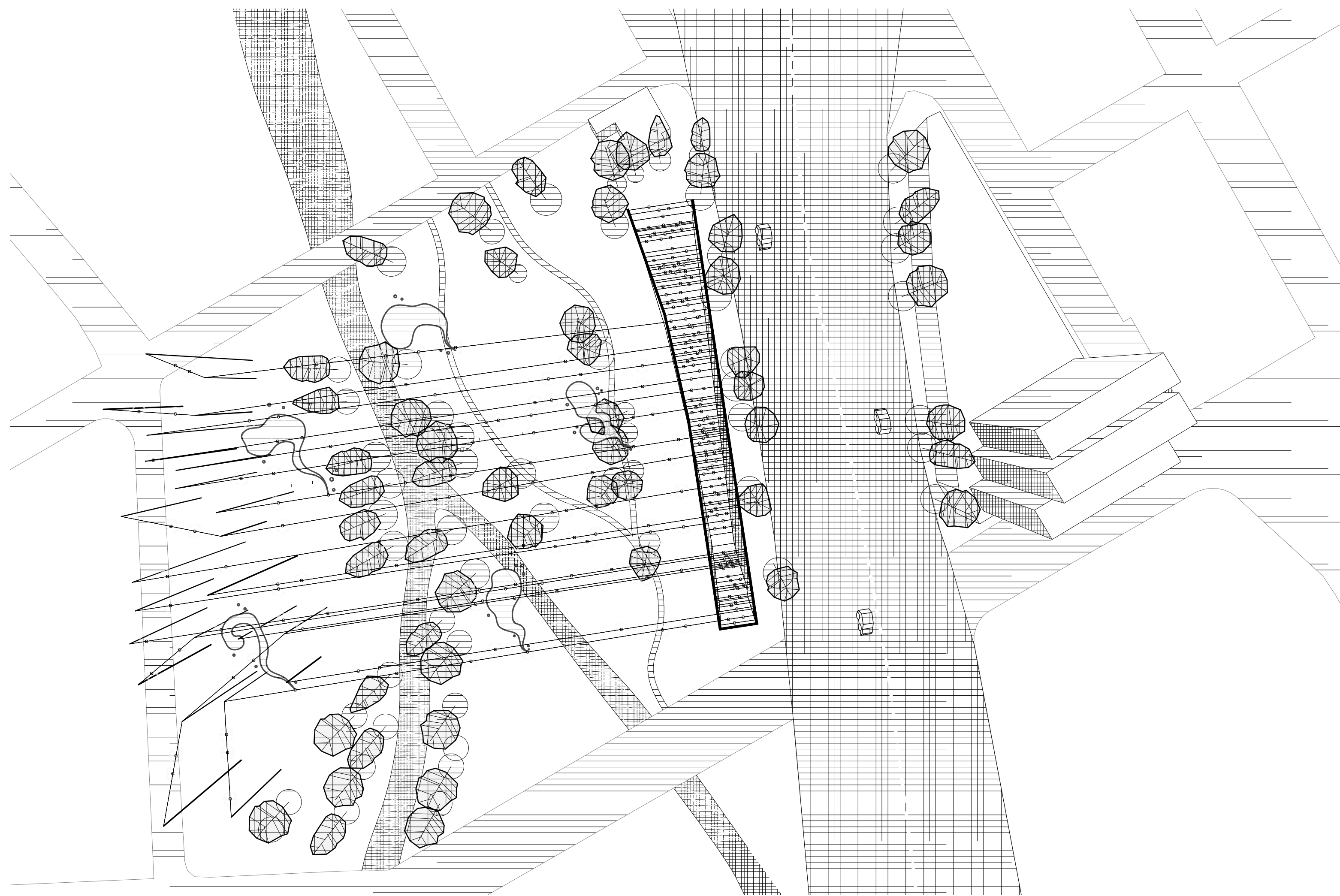
The Arena Green Park in San Jose in California is divided into two by the Guadalupe River that originates in the Santa Cruz Mountains, crosses the entire city and empties into San Francisco Bay.

While the east side of the park's riverbank is composed of tennis courts and big lawns creating a setting for one big monolithic pavilion, the west bank has small playgrounds, memorials, monuments, and other facilities located (some of them are almost hidden) between the trees and vegetation – therefore it requires much subtle approach and smaller interventions.

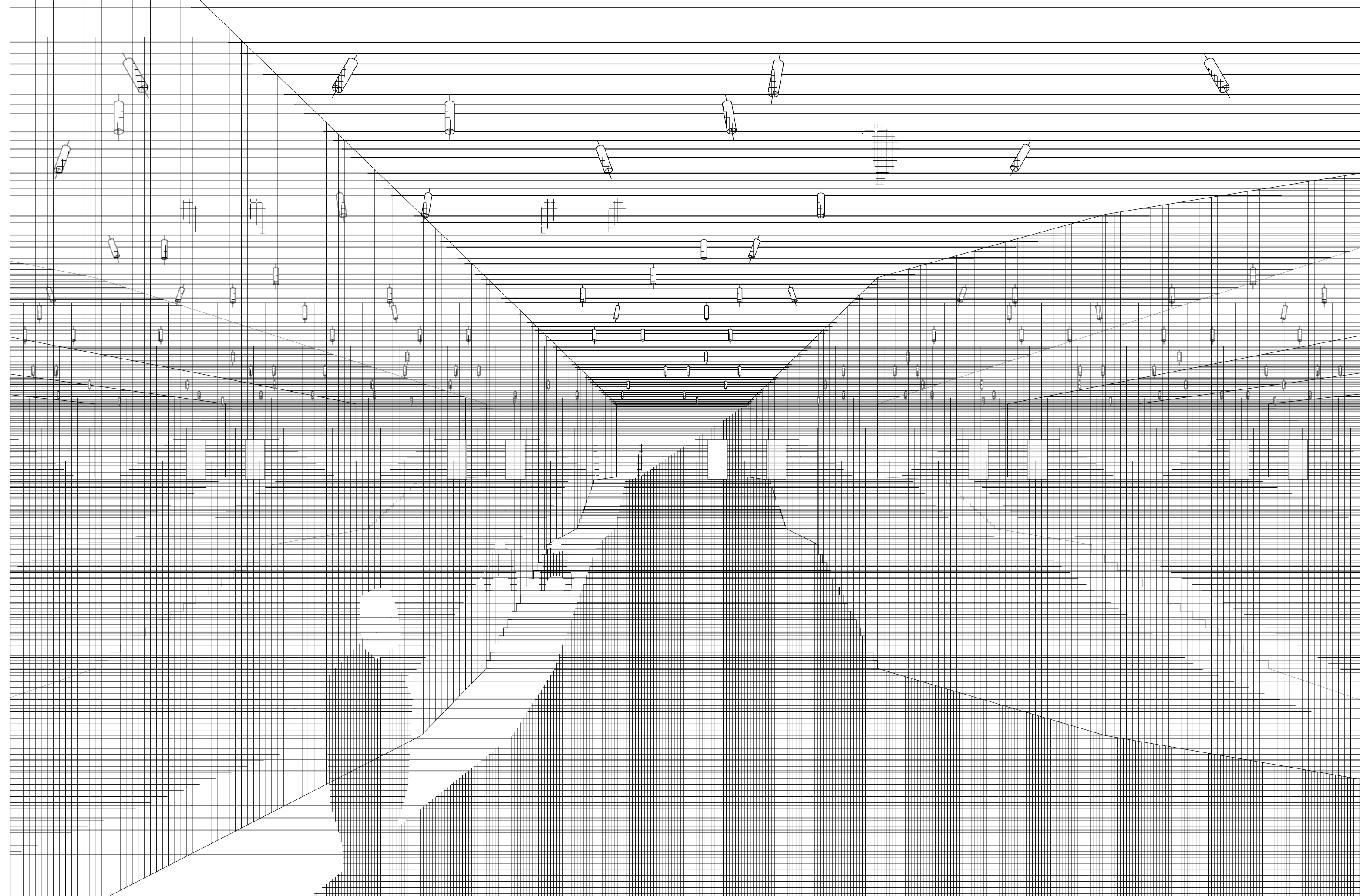
Consequently, the tennis courts will be relocated in favor of a new U shaped elongated courtyard that is made of massive concrete walls covered with mirrors that reach 10 meters at its highest point. It has a long paved ramp that goes down from its north entrance and leads to a flight of stairs and a door on the other end. It is a place to lay down in the shade and look at the sky, to feed the yellow rails that are nesting along the river and to listen to the sound of the bells that hangs from the cables that suspends between the glazed walls and anchored to columns that scattered on the west side of the park. These columns vary in their heights and widths and blend between the trees and existing attractions.

The courtyard, the columns and the cables that tie them together are a part of a large structure that covers the entire park. This structure uses the cables to carry bells, lamps, shades, fans (for air cooling by mist) and other elements, which has two purposes: the first is to function as infrastructure that keeps some of the maintenances of the park, like lightning and irrigation systems. The second is to create an interaction with the visitors by sound and light in a playful way.

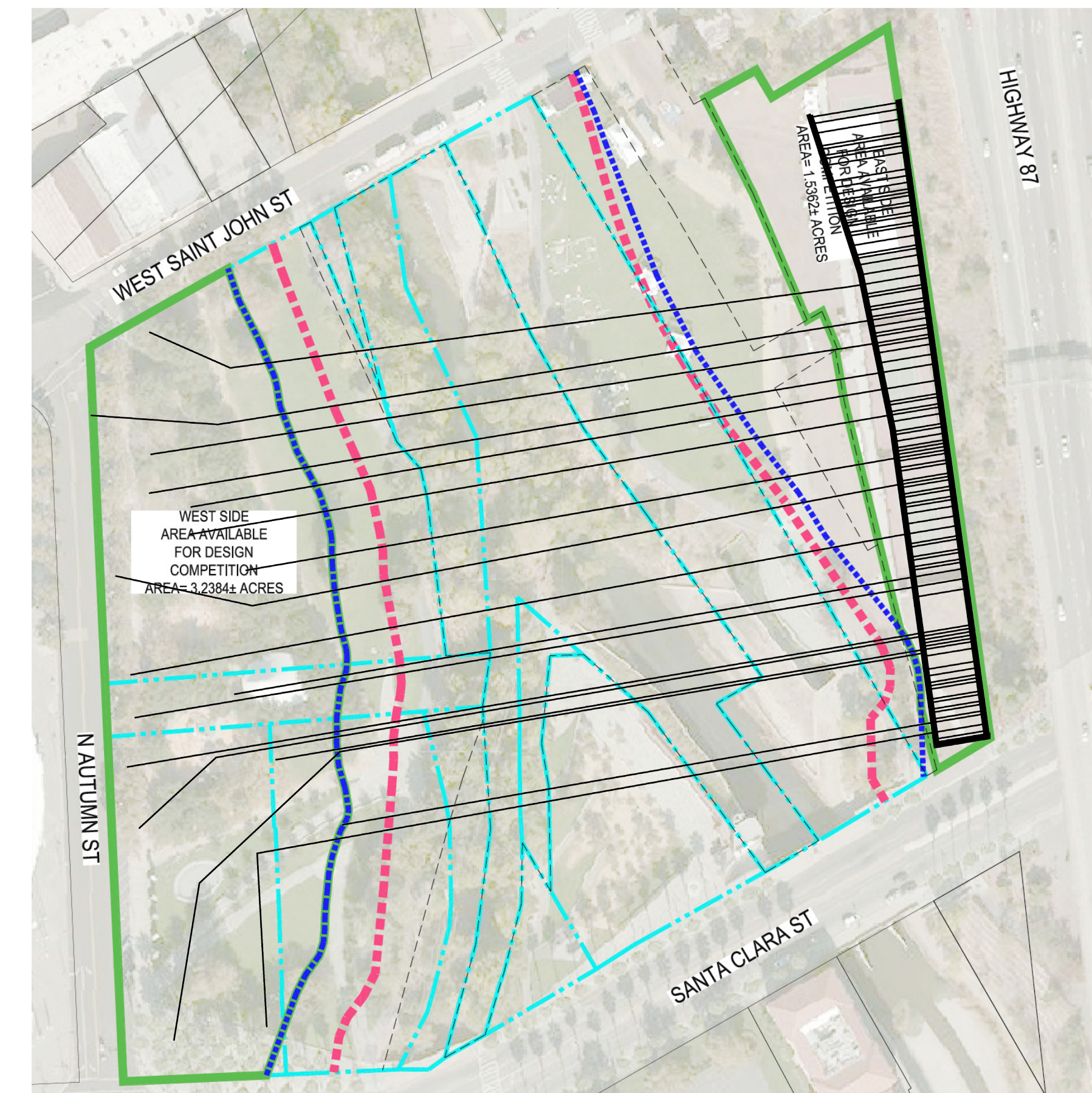
Electric cables can be used for hanging bells and irrigation systems can become fountains or just a fun way for kids that play outside to cool down on a hot day, by realizing the potential of infrastructure to create a unique and special sense of place in a way that inspires future generations sustainably and responsibly.



general plan (top view)



view inside the courtyard



site map

Height: 10 meters (11 yards)

Length: 150 meters (165 yards)

Width: 20 meters (22 yards)