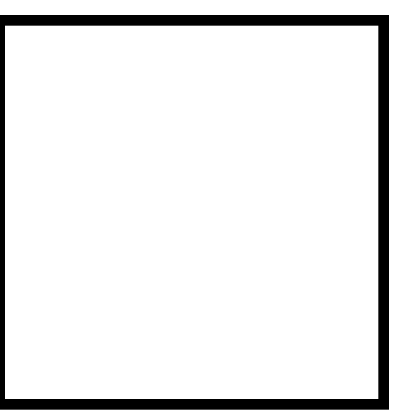
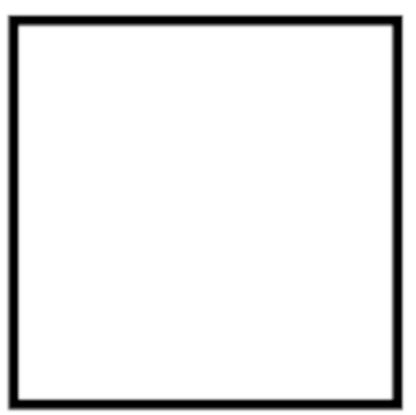
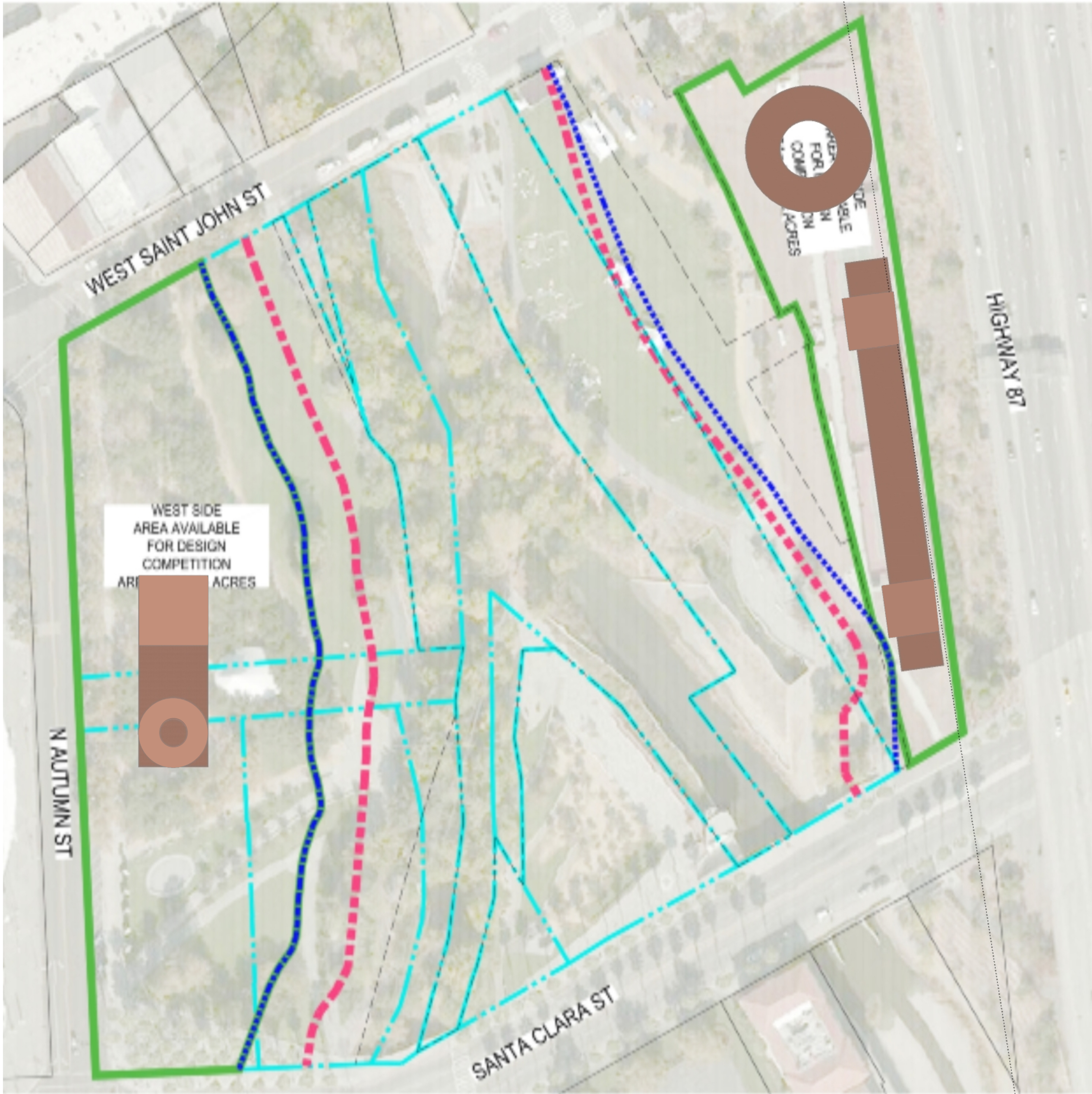




The tall building on the west side consists of the round tower and the prismatic volumes plus the middle-height-positioned connecting part. Two lower buildings are on the east side, one elongated and one round. The west tall building is meant to function as an urban hub and a gate to the park. The east lower buildings are meant to function as a recreational free time place and a solar power plant. The tallest part of the western building is its round tower part. In the lower round tower segment, there is a cafe-elevator.





The tall building on the west side consists of the round tower and the prismatic volumes plus the middle-height-positioned connecting part. Two lower buildings are on the east side, one elongated and one round. The tall building on the west side is meant to function as an urban hub and a gate to the park. The lower buildings on the east side are meant to function as a recreational free time place and a clean energy power plant. Both the eastern buildings and the western one should have their appropriate commercial and hospitality spaces. The tallest part of the western building is its round tower part. In the lower round tower segment, there's a restaurant-elevator or cafe-elevator that brings visitors up to the middle-height part. There is also one special panoramic elevator in the highest segments of the round tower part. An appropriate amount of green roofs and green walls can contribute to overall sustainability logic. Glass areas facing upward even at slightest angle were avoided or where unavoidable they are shielded with upper horizontal volumes. The scheme of artificial lighting is peripherally upper parts blue, lower parts green. One net-zero energy design component may be achieved by constructing multi-layered thermally insulating, accumulating and heat-exchanging walls that contain layers or curtains of air and water connected to their respective heat-pump systems. The complementary renewable energy generating component may be created by using one or both of the eastern lower buildings for most probably advanced solar power station purposes.

