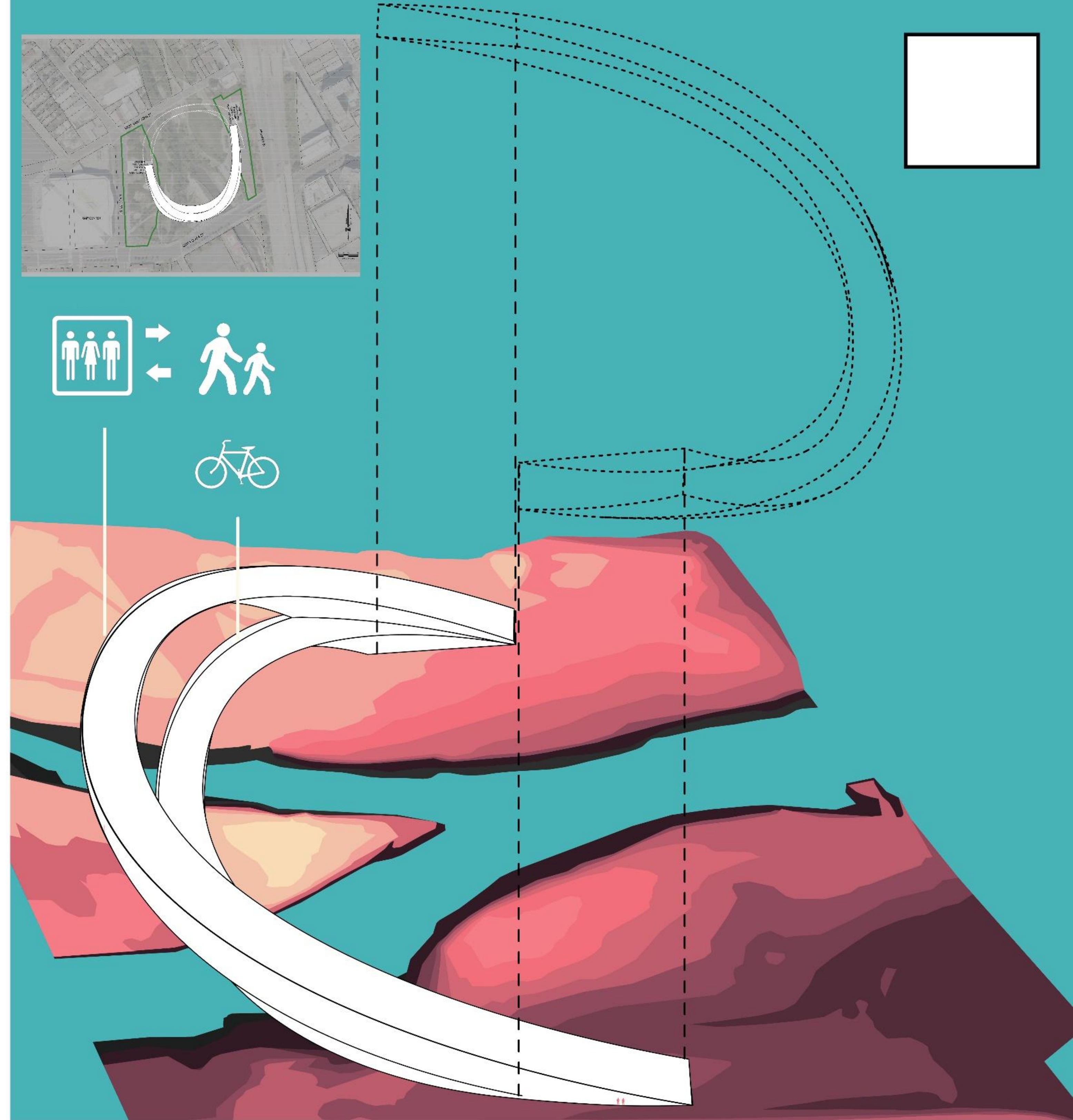
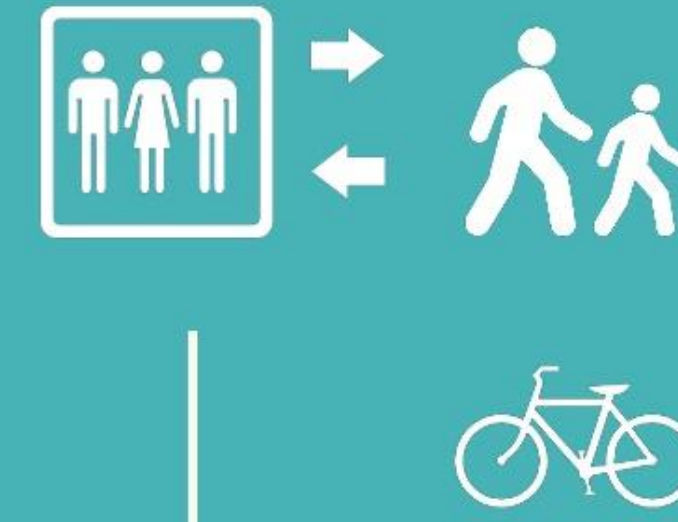
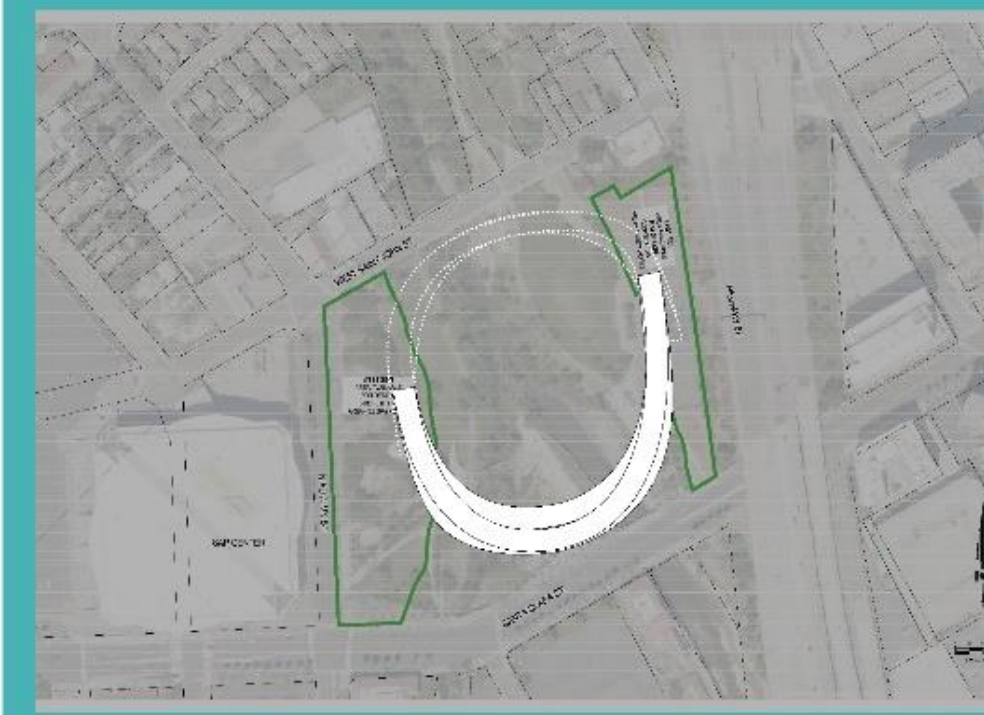


Description:

Entry at the ground line of the building represents the time node of **present**:

1. "Back to the Starting Point"
Everything under the ground line will be the spaces showing the history of Silicon Valley. As visitors go downstairs toward the bottom space, they can wander in the museum-like space and watch the information boards/screens on the wall. As they go deeper, the space will be end with the lowest part of the ring under the ground. It is a symbolic space of the very beginning of Silicon Valley (1954 or even earlier). It can be a large auditorium or a concert hall.

2. "Step into the Future"
Everything above the ground line will be the places showing the future of Silicon Valley. As visitors take the elevator or walk upstairs, they can see the future plans of Silicon Valley on digital screens. At higher levels, visitors will have a chance to look outside through the small viewing decks. When they reach the top viewing decks, they will have the best and highest view of San Jose. There is a story behind the whole riding/walking upstairs process: only with time passing can people have a **better vision** (higher level) of life and urban development.



RINGLIGHT