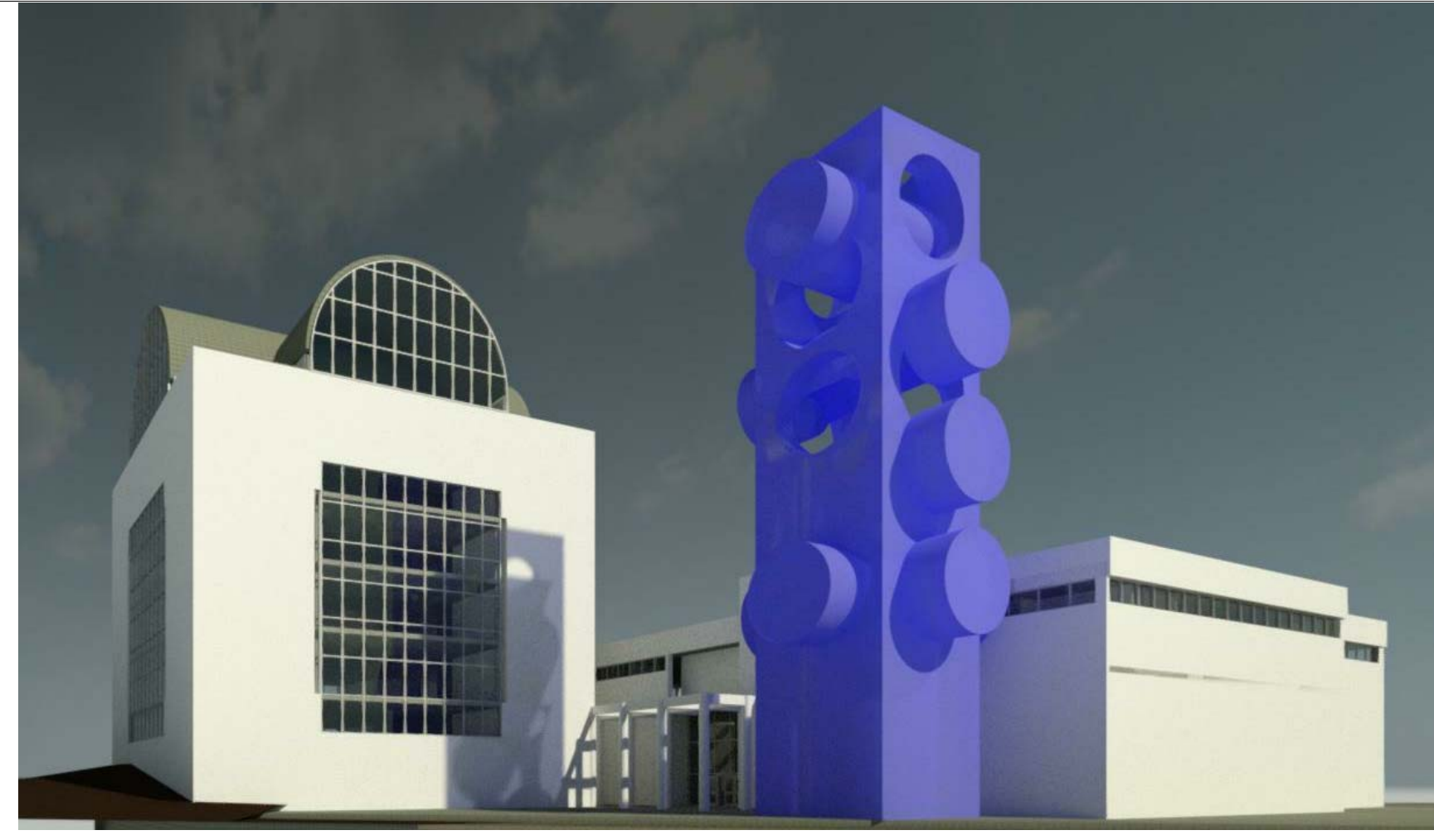
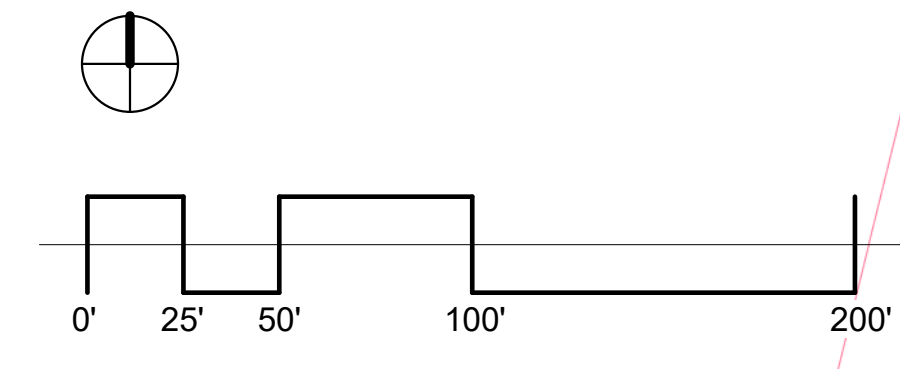


4 SITE PLAN
1" = 50'-0"

HOUSE OF TECHNOLOGY



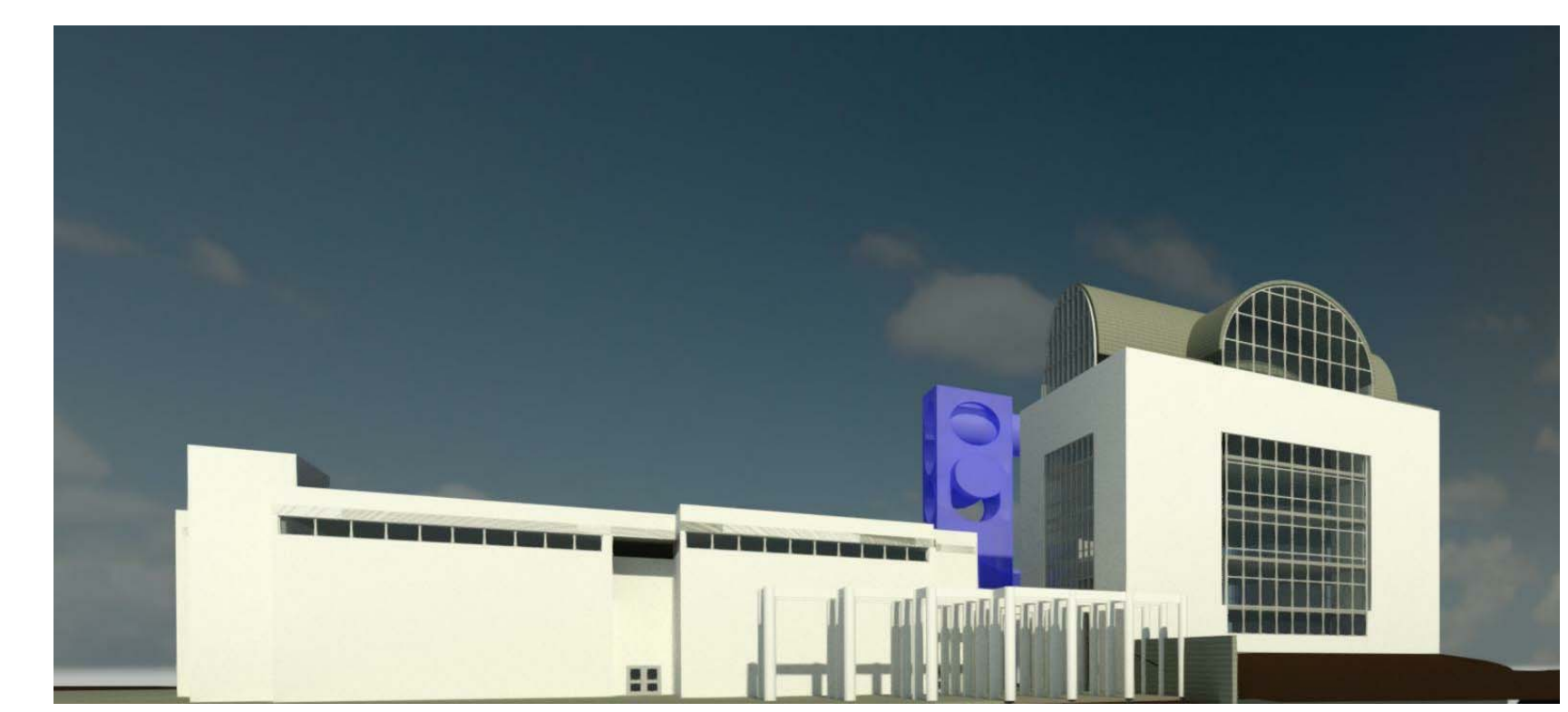
3 RENDERING - NORTHWEST BUILDING
ELEVATIONS
12" = 1'-0"



5 RENDERING - NORTHEAST BUILDING
ELEVATIONS
12" = 1'-0"



1 RENDERING - SOUTHWEST BUILDING
ELEVATIONS
12" = 1'-0"



2 RENDERING - SOUTHEAST BUILDING
ELEVATIONS
12" = 1'-0"

THE SILICON VALLEY HOUSE OF TECHNOLOGY (THE HOUSE) WILL BE HOME TO A MUSEUM, AUDITORIUM, TOWNHALL OFFICES, LIGHT TOWER SCULPTURE AND PARKING FACILITIES. THE MUSEUM WILL CONSIST OF PAST, PRESENT AND FUTURE GALERIES, DOCUMENTING THE HISTORY OF SILICON VALLEY TECHNOLOGICAL ACHIEVEMENTS ALONG WITH PRESENT AND FUTURE TECHNOLOGICAL DEVELOPMENTS. THE AUDITORIUM WILL HOUSE APPROXIMATELY 650 PERSONS. TOWNHALL FACILITIES WILL INCLUDE MEETING ROOMS AND ASSOCIATED FACILITIES DESIGNED TO SUPPORT EMERGING ENTREPRENEURS AND SILICON VALLEY RESIDENTS. THE SCULPTURE WILL USE STATE OF THE ART DIGITAL GRAPHICS TO DISPLAY MUSEUM ARTIFACTS AND SILICON VALLEY ITEMS OF INTEREST. FOUR LEVELS OF UNDERGROUND PARKING WILL HOUSE ABOUT 380 AUTOMOBILES.

DESIGN OBJECTIVES: DESIGN OF THE HOUSE COMBINES THE SPIRIT OF TECHNOLOGICAL DEVELOPMENT WITH A SENSE OF FUNDAMENTAL INNOVATIVE POSSIBILITIES FOUND IN THE SILICON VALLEY TO CREATE A POWERFUL AND PHYSICAL ICONIC LANDMARK OF URBAN IDENTITY. THE HOUSE WILL ENHANCE COMMUNITY LIVING BY SUPPORTING NET ZERO ENERGY DESIGN PRINCIPLES AND GREEN ENVIRONMENTAL PLANNING GOALS WHILE ACTING AS A CATALYST TO INVIGORATE THE GUALDALUPE RIVER PARK AND GARDENS. DESIGN OF THE HOUSE IS BASED ON THE BELIEF THAT IT WILL BE A BEACON OF LIGHT TO SHOW HOW INNOVATIVE PAST, PRESENT AND FUTURE TECHNOLOGICAL DEVELOPMENTS HAVE AND WILL IMPACT AND IMPROVE COMMUNITY AND WORLD ENVIRONMENTAL CONDITIONS.

