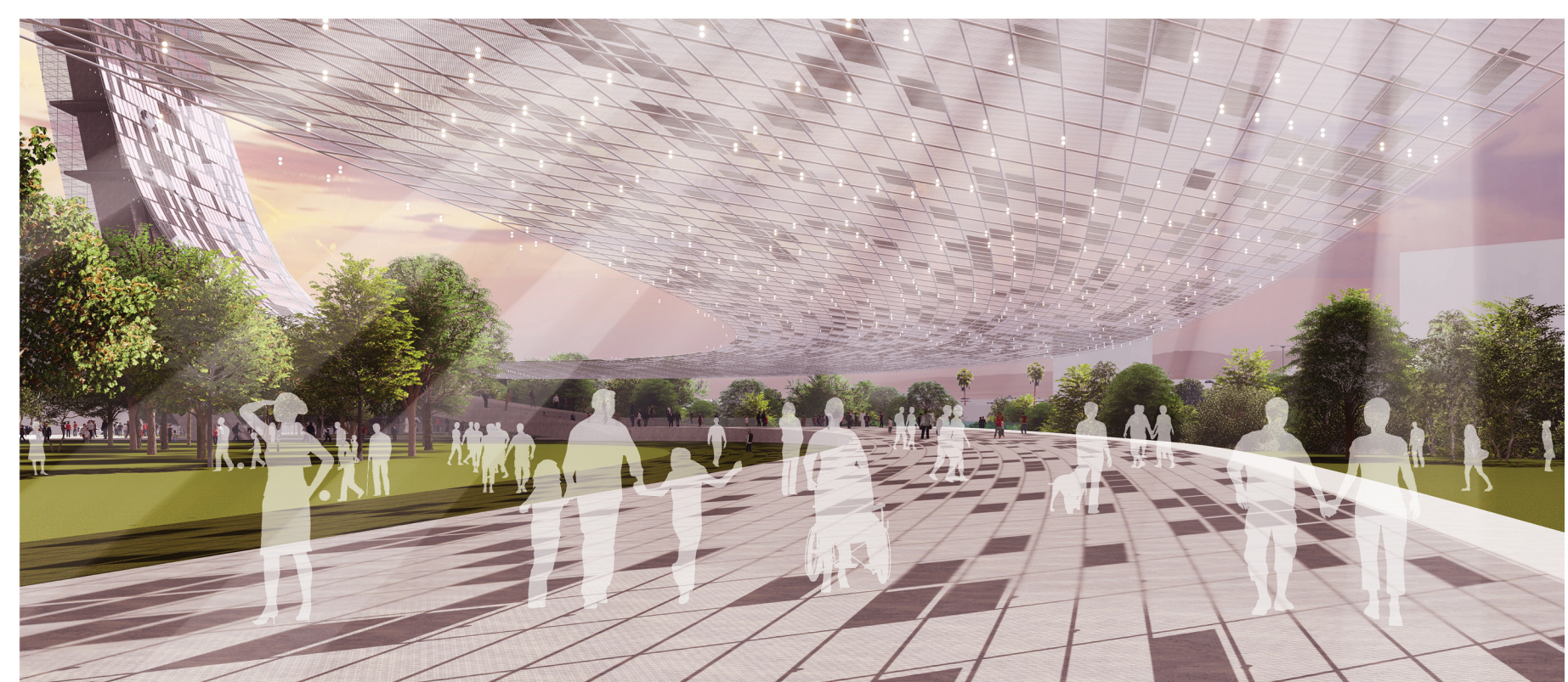


This is a high-angle, aerial rendering of a proposed urban development during the 'blue hour' of sunset. The central feature is a large, sculptural pedestrian bridge or promenade that curves through the landscape. It has a distinctive facade with a grid of glowing, golden-yellow squares. The bridge is flanked by lush greenery, including rows of palm trees and dense shrubbery. To the right, a multi-lane highway with cars is visible, alongside modern, low-rise buildings. In the background, a vast cityscape stretches to the horizon under a sky with soft, colorful clouds. The overall atmosphere is one of modernity and integrated urban design.

The Infinite Mosaic: San Jose Light Tower, a tower and bridge, connects the city to its diverse communities and natural ecologies offering a new destination.



GUADALUPE PROMENADE The park entry at Guadalupe River Park and Gardens connects east and west with a pedestrian river bridge.



URBAN SHADE CANOPY The canopy shelters places for cultural events, arts, and amenities while harvesting solar energy.

San Jose

Silicon Valley

Timeline (Year): 1400, 1500, 1600, 1700, 1800, 1900, 2000, 2050

Key Events:

- 1470: Printing Press
- 1608: Telescope
- 1850: San Jose Baptist
- 1769: Steam Engine
- 1844: Telegraph
- 1879: Light Bulb
- 1851: State Capitol
- 1854: San Jose Light Tower
- 1906: Light Tower Collapse
- 1908: Stanford SJSU
- 1929: Stanford Industrial Park
- 1930: Light Tower Reconstruction
- 1955: The Tech Start-Up
- 1960: San Jose Pop. 1M
- 1969: The Light Between Two Towers
- 1970: Urban Confluence San Jose
- 2012: Gene Editing
- 2015: Driverless Car
- 2004: Facebook
- 2006: Twitter
- 2007: Hybrid Cars
- 2008: DDDs
- 2009: Car Phone
- 2010: WWW
- 2011: Windows
- 2012: Apple Mac
- 2013: Web 2.0
- 2014: Wordprocessor
- 2015: Microprocessor

INFINITE MOSAIC: SAN JOSE LIGHT TOWER



GUADALUPE FREEWAY (SR 87) Along the freeway, the Light Tower arcs upwards to the infinite possibilities of innovation, discovery, and illumination.



CONFLUENCE POINT OVERLOOK The urban shade canopy curves along the Los Gatos Creek and the Guadalupe River offering views, connection to the shore, and an ecological edge.

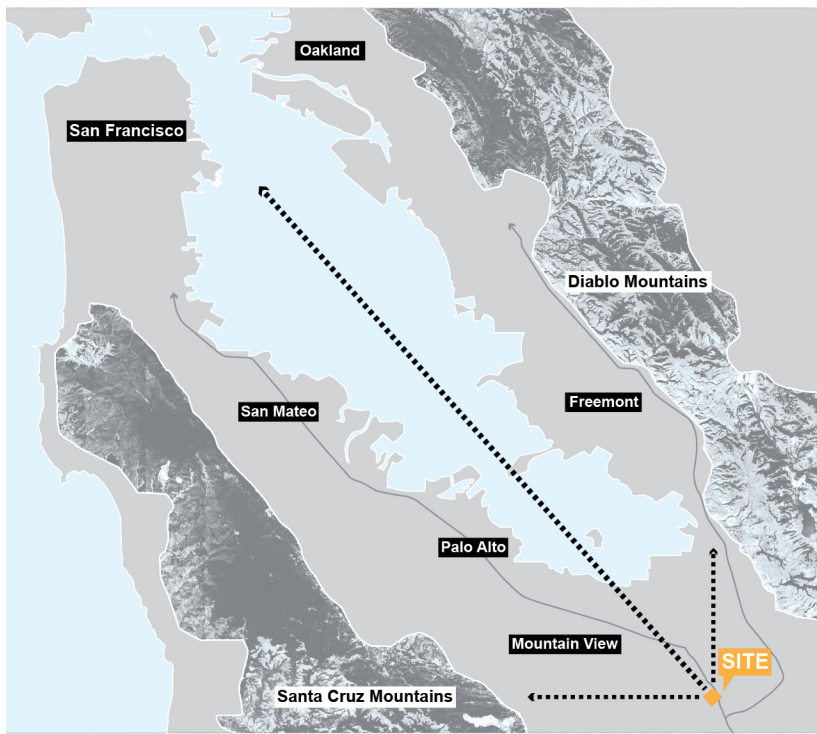


GUADALUPE RIVER PARK GREEN Pedestrian and bicycle paths invite people through the park, a site for urban gathering and imagination.



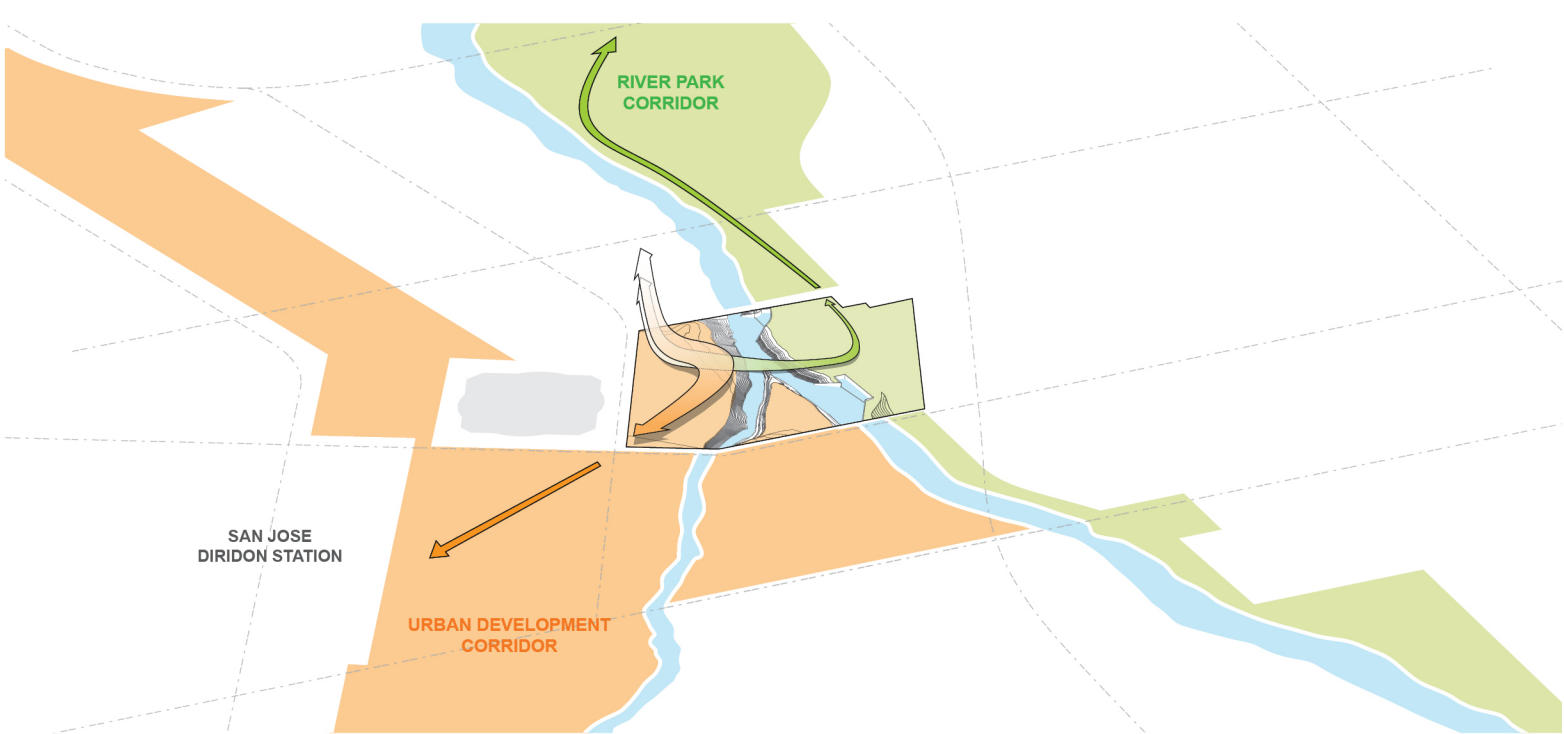
THE OBSERVATORY The panorama between past, present and future provides views of the surrounding cityscape, mountains, and Silicon Valley.

SAN JOSE
and the Silicon Valley

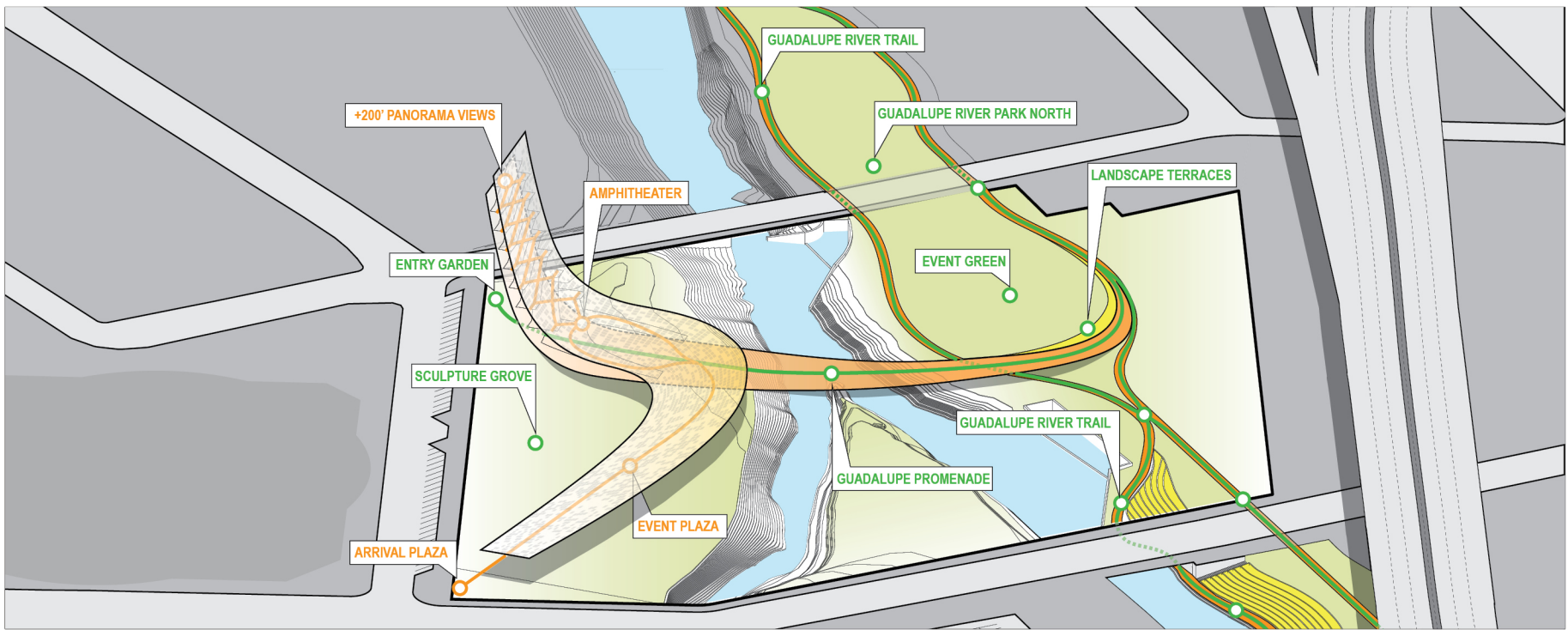


URBAN CONFLUENCE

MAPPING FUTURE GROWTH
Google Downtown West, Diridon Station, and the Guadalupe River Park and Gardens



URBAN CONNECTIONS
converging communities, nature, and innovation



INFINITE MOSAIC: SAN JOSE LIGHT TOWER