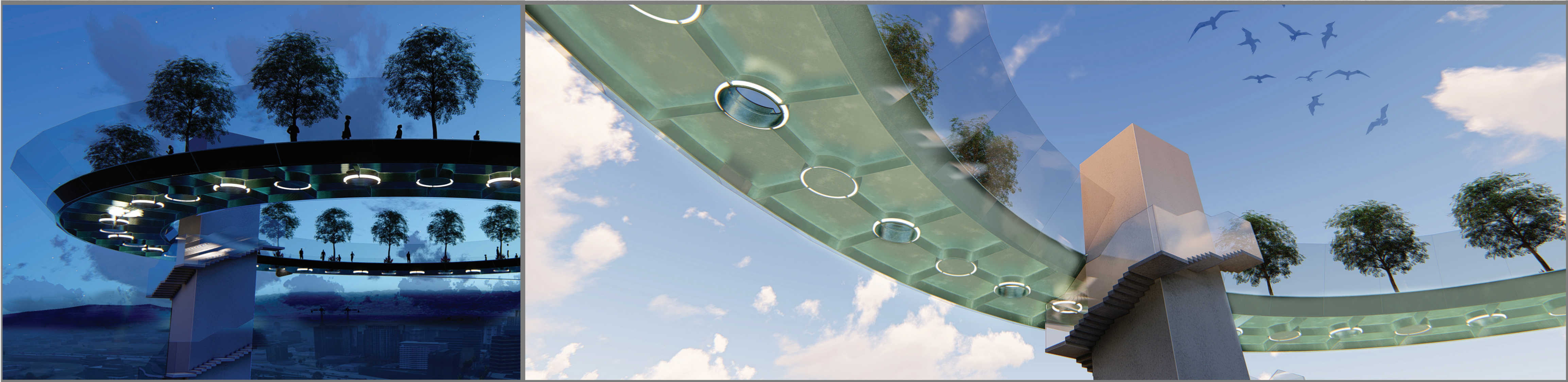
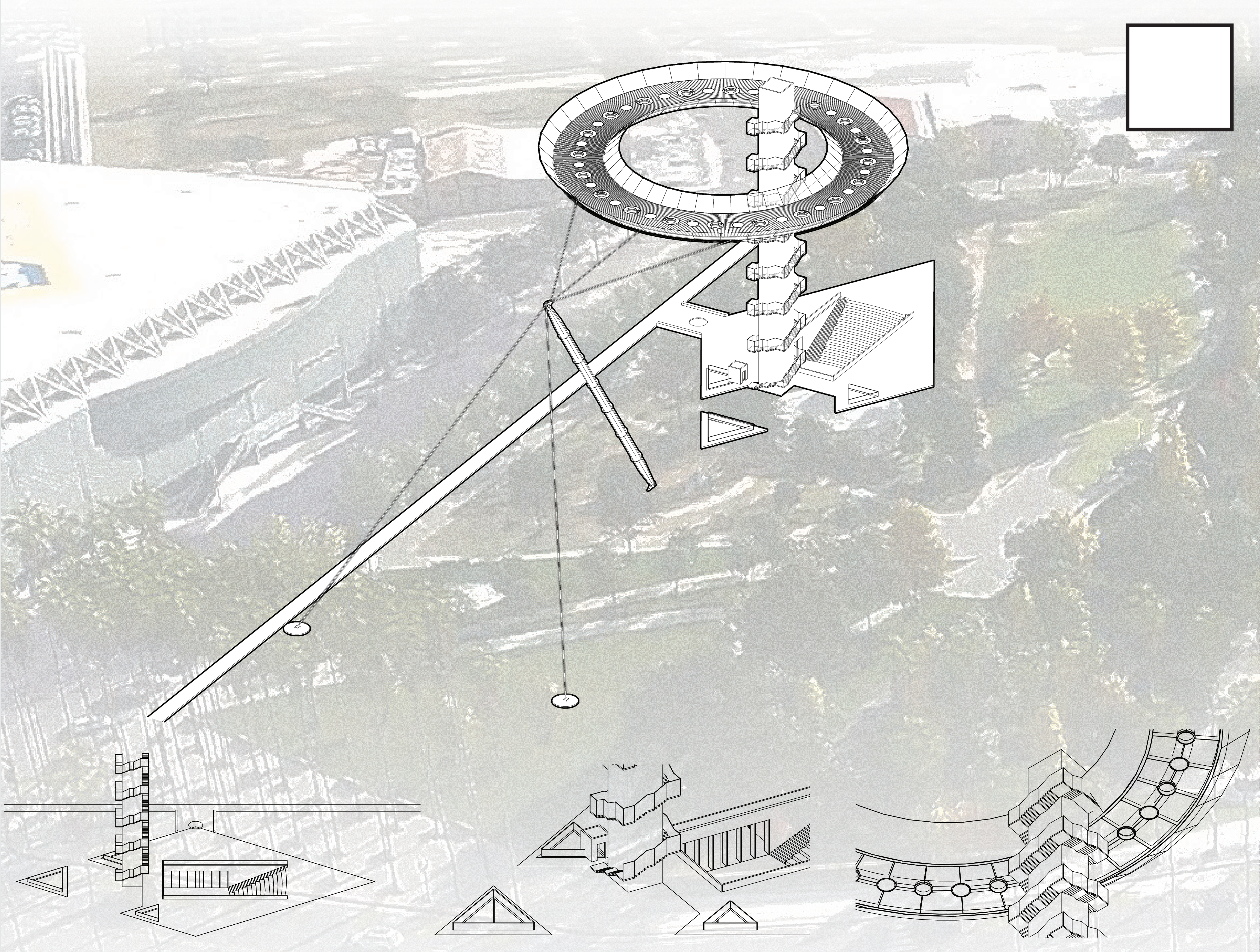
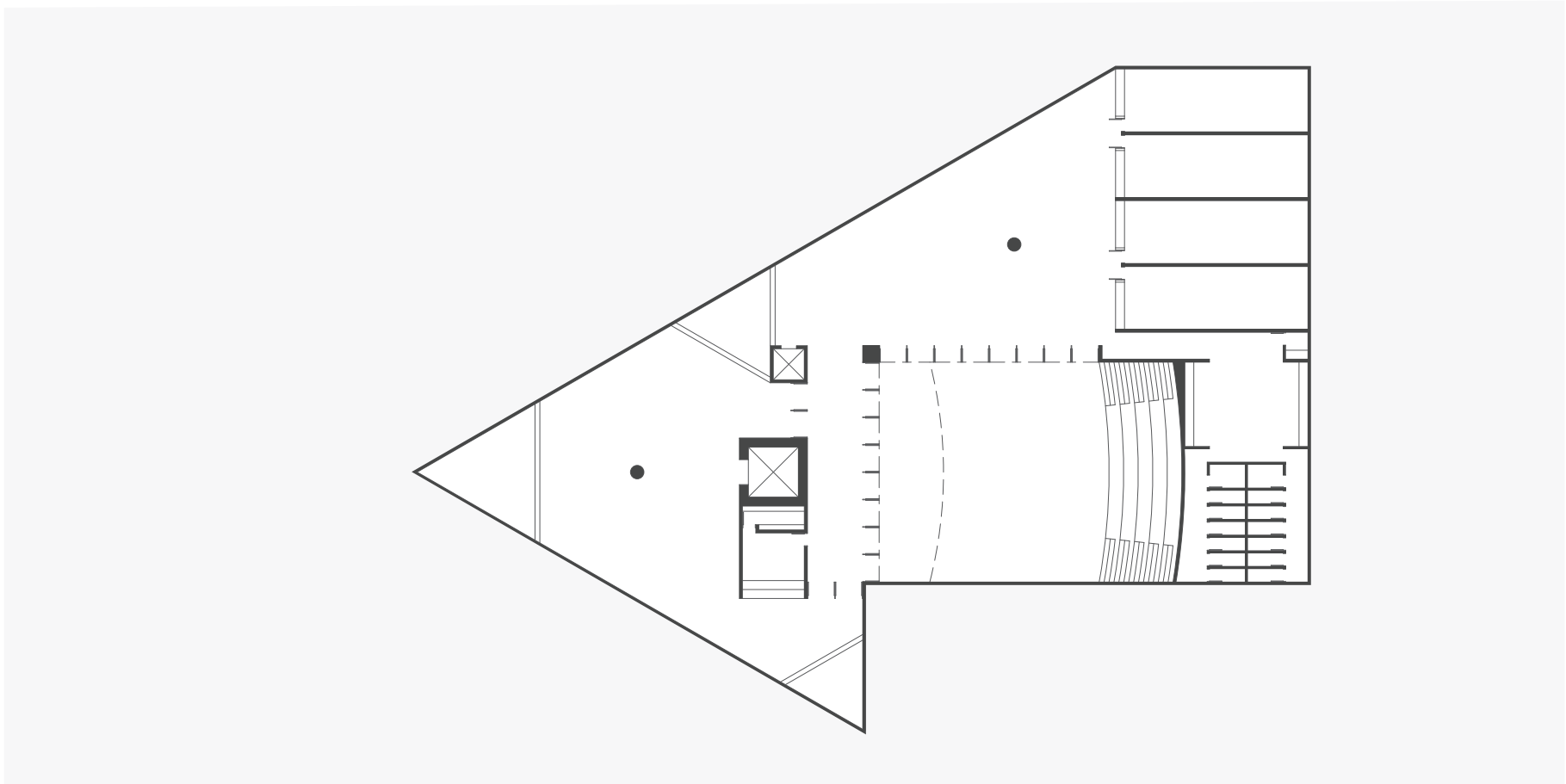
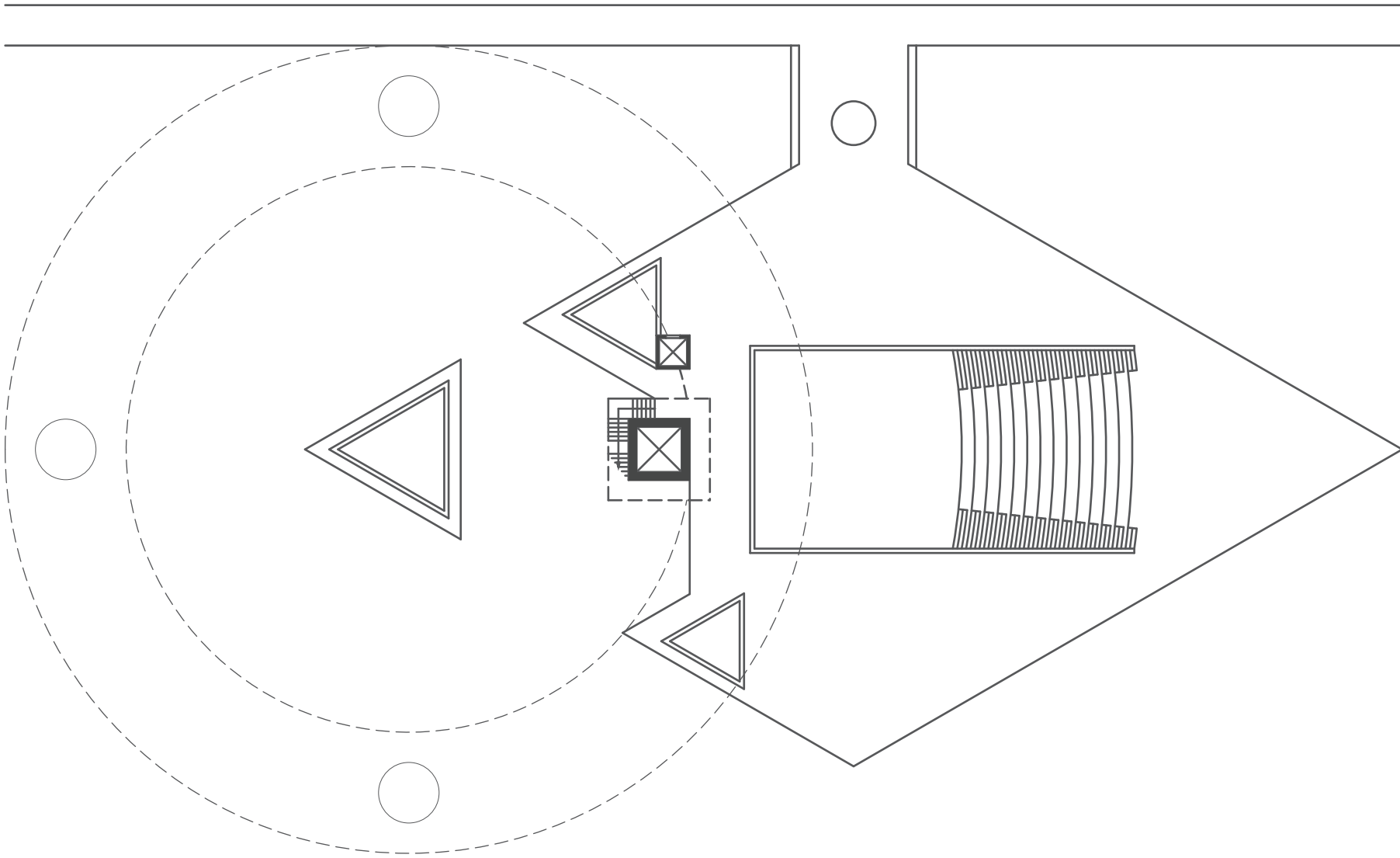
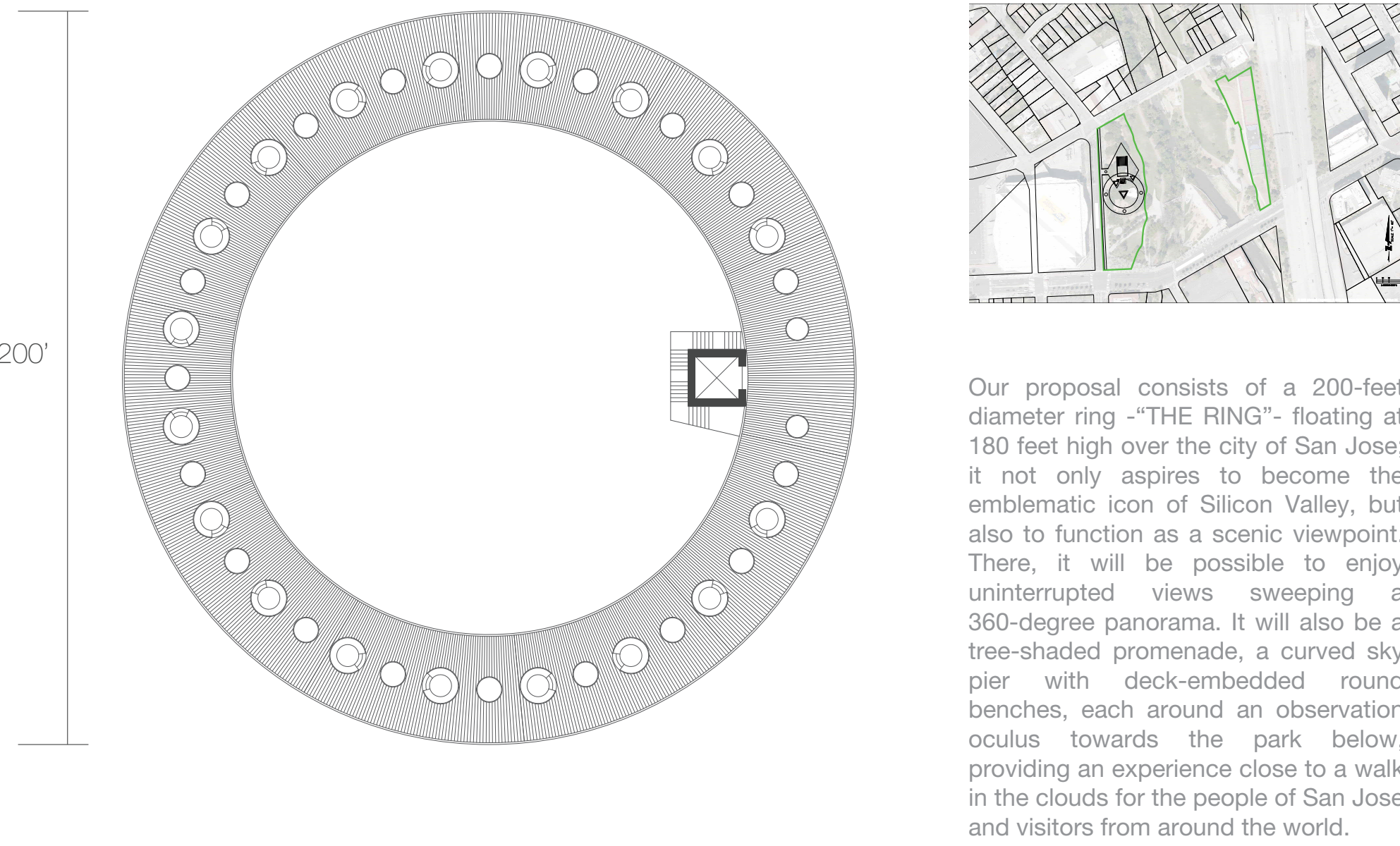
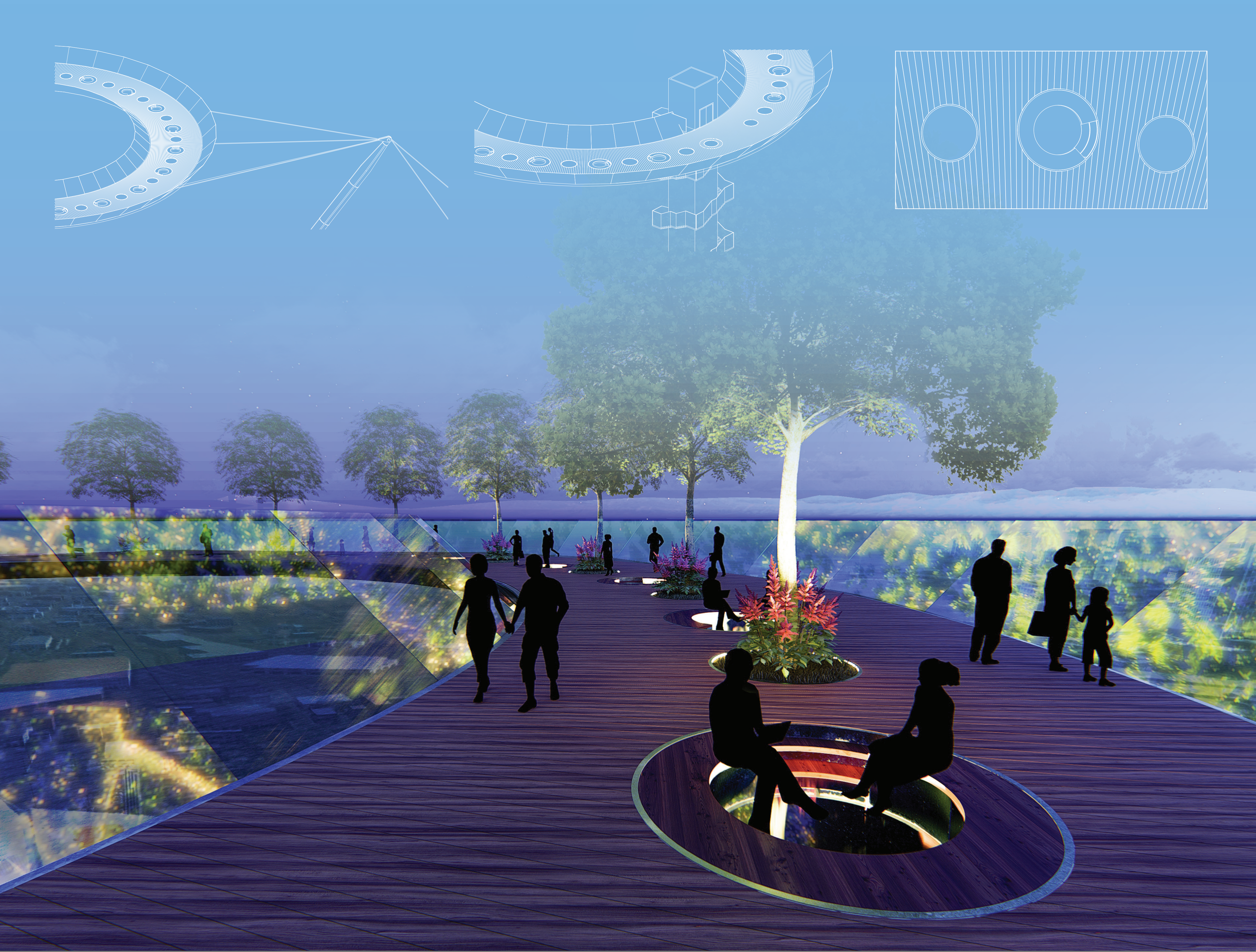


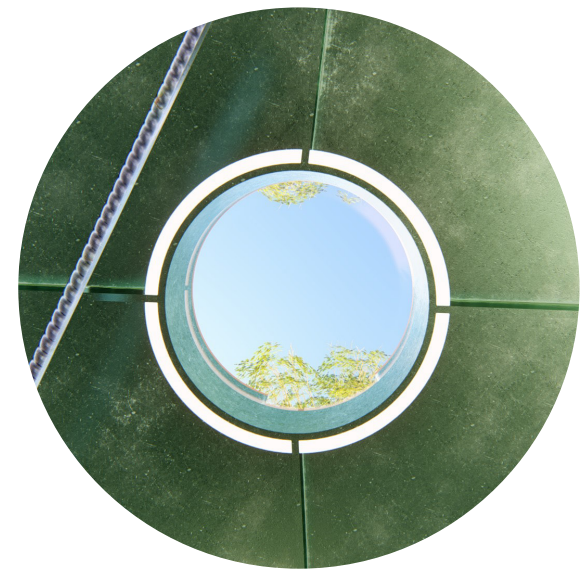
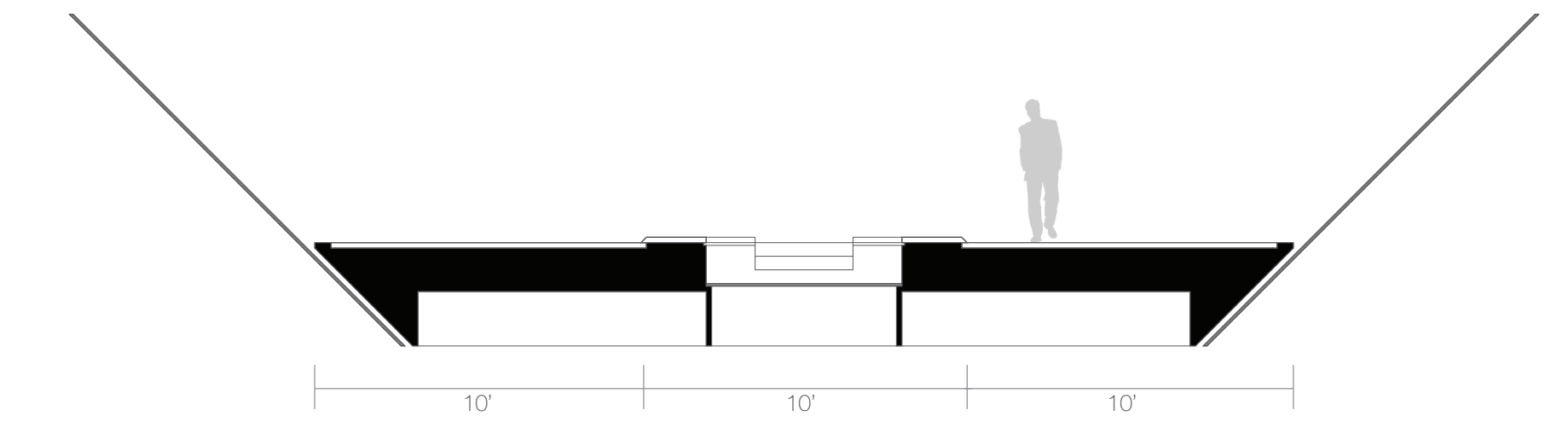
# THE RING



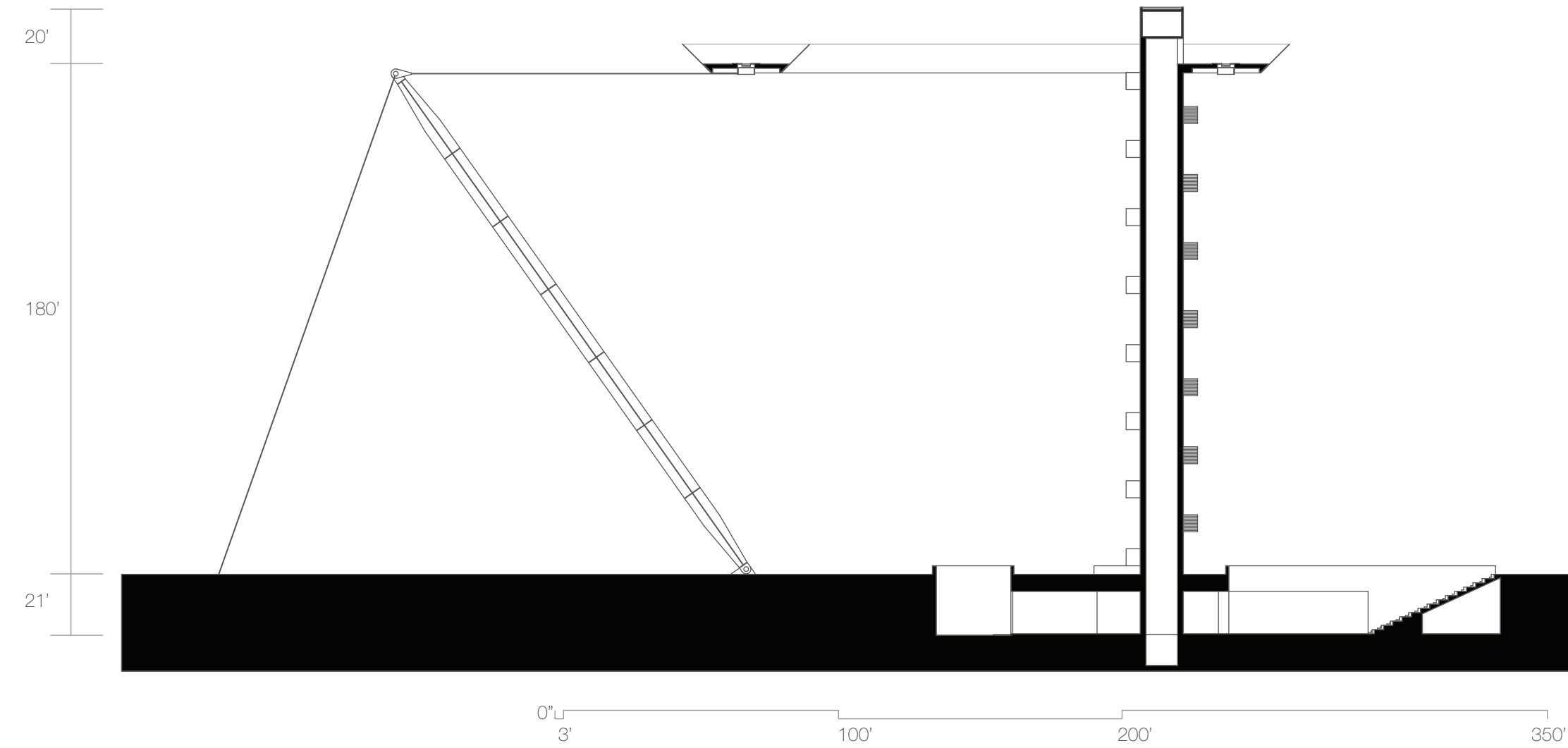




# THE RING



This tower is an integral part of the structural solution, together with a system of tensioned cables articulated to a cyclopean diagonal mast. Although the landmark is implanted as a freestanding autonomous object, its insertion is carried out with outmost sensitivity and consideration for the place. The complex will be accessed from a single-story buried building; in the spirit of a Net Zero approach, the idea is to project the least invasive footprint possible, so as to minimally alter the layout of the existing promenades.



Amenities will include an access staircase that is also a grandstand, a multipurpose stage-patio, four shops, a dining hall, a ticket office and a waiting area, services; three landscaped triangular courtyards serve as additional light sources.

