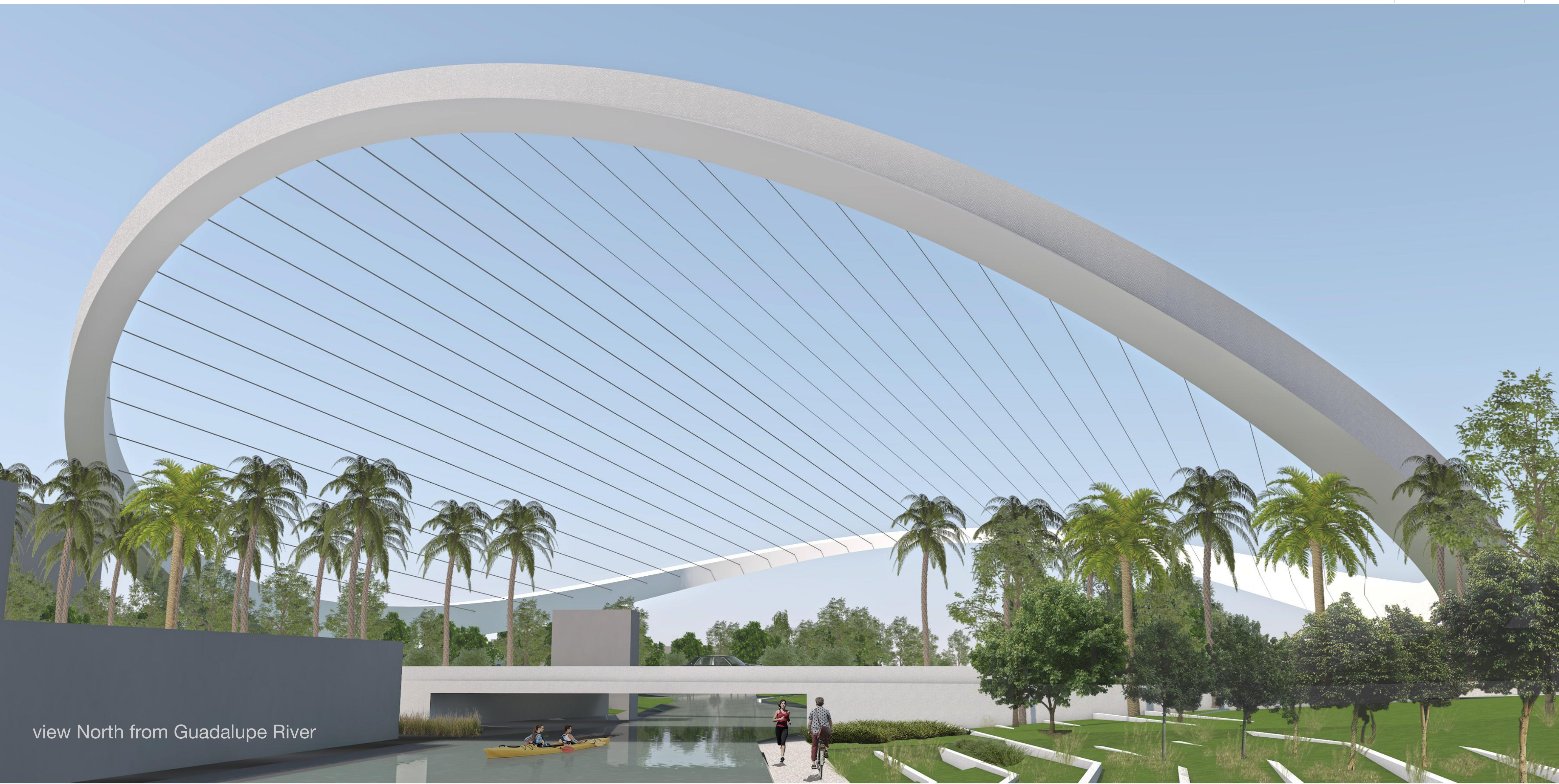


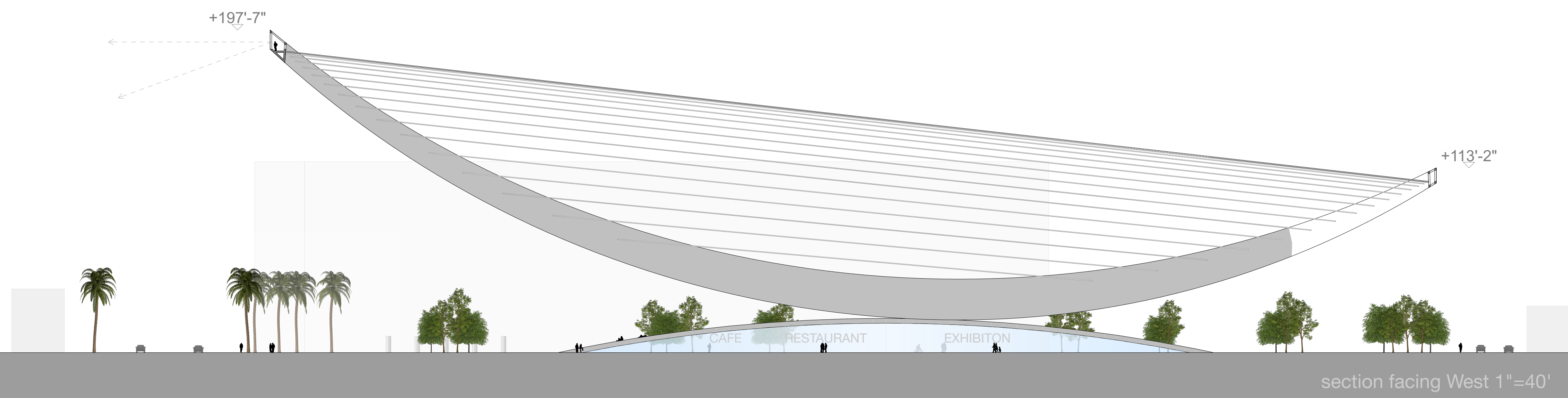
Confluence Ribbon

The Confluence Ribbon proposal consists of two elements. The landmark is a Ribbon that follows a circular geometry in plan with an external diameter of 720 feet, bridging Guadalupe River and LosGatos Creek twice, once before and once after Confluence Point which it encloses. The arches rise up in a curve to about 200 feet on the South loop and to 113 feet on the North loop and are connected through steel cables for support. Both loops are accessible via steps leading up across the river to provide views of the surroundings.



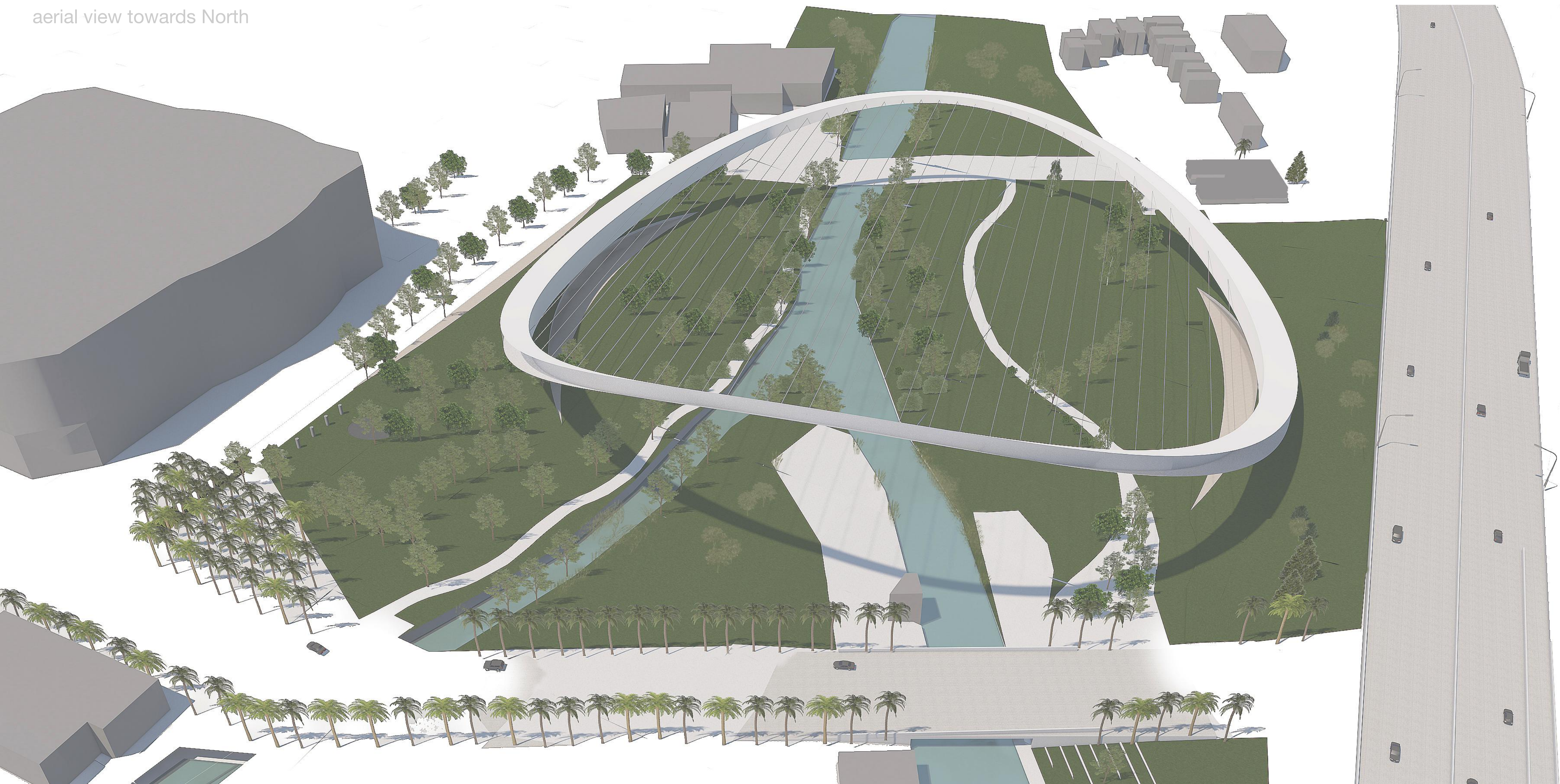
view North from Guadalupe River

The Ribbon rests on two support buildings on each side of Arena Green that grow out of the existing park and connect to it through a sloped green roof. Both buildings host functions such as cafes, restaurants and exhibition spaces that support park activities but can also be operated individually. They shield the park from surrounding traffic noise and are accessible via large outdoor terraces.



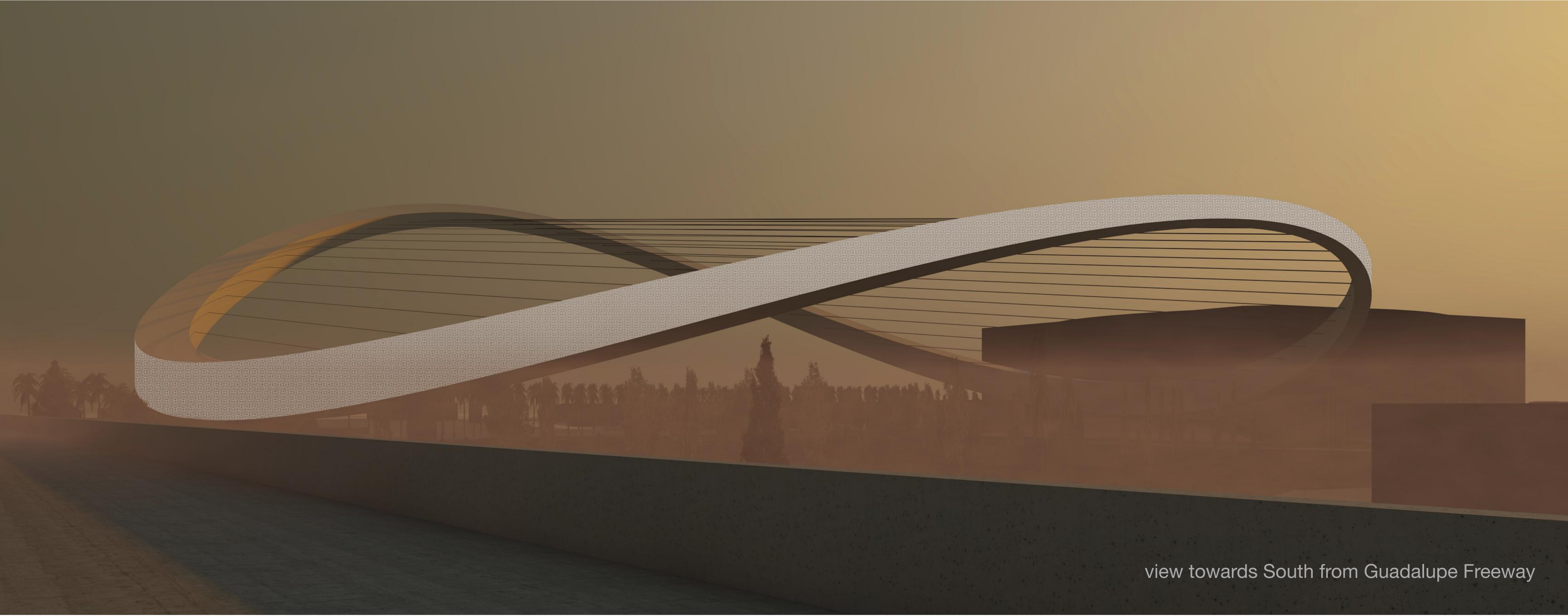
section facing West 1"=40'

aerial view towards North



Confluence Ribbon

The Ribbon's main structure consists of a rectangular steel frame, much like a conventional bridge. Two arches are holding each other up to span the river while keeping a slim profile. Within the structure is space for steps. The outer surface is translucent and covered with steel mesh to provide views and can be lit up at night. The inner surface and the bottom are covered with metal while the upper surface holds solar panels that generate electricity to light up the Ribbon and provide electricity for the support buildings. The publicly accessible green roofs of the support buildings are used to collect rain water for grey-water use.



view towards South from Guadalupe Freeway

