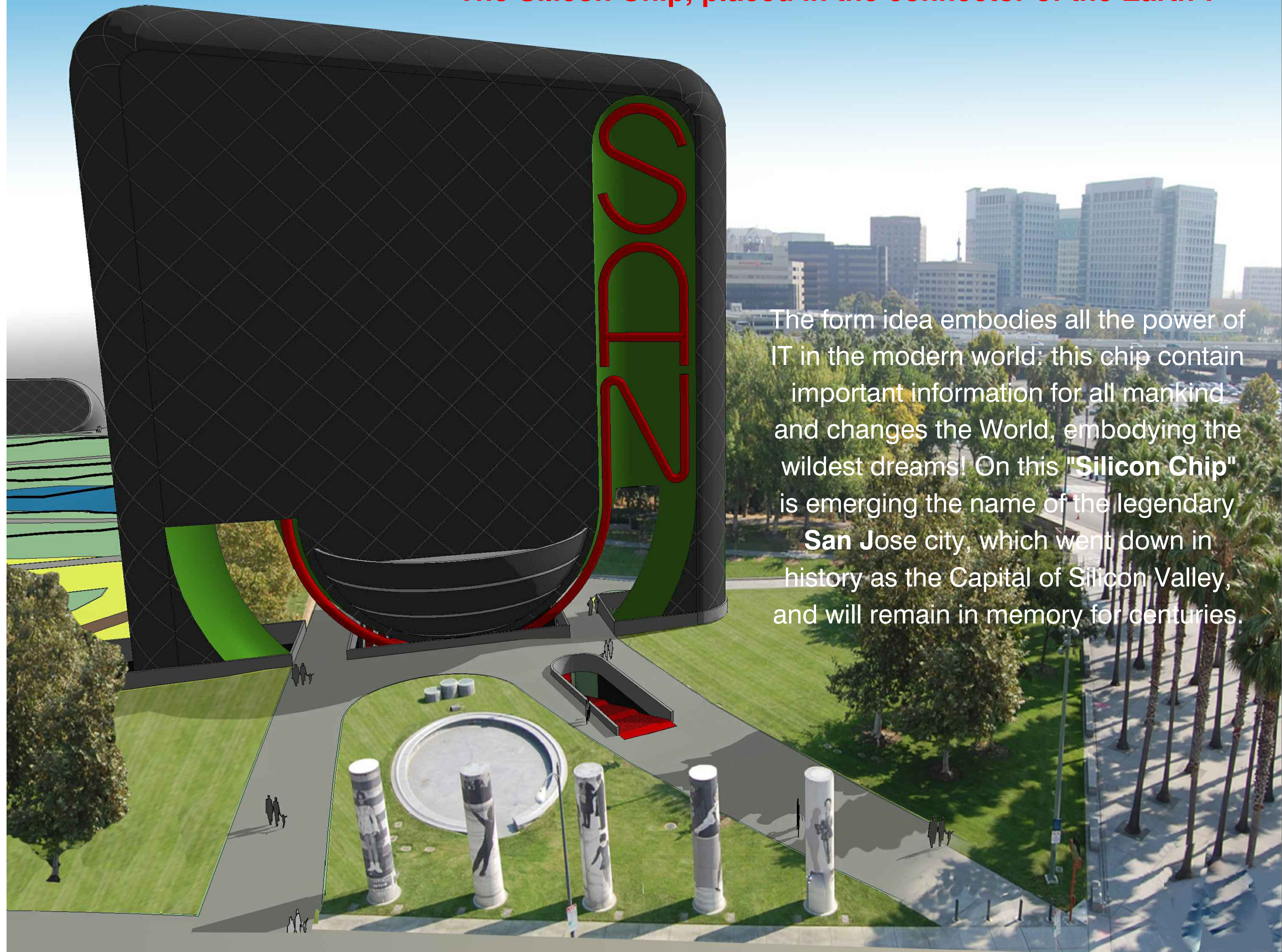
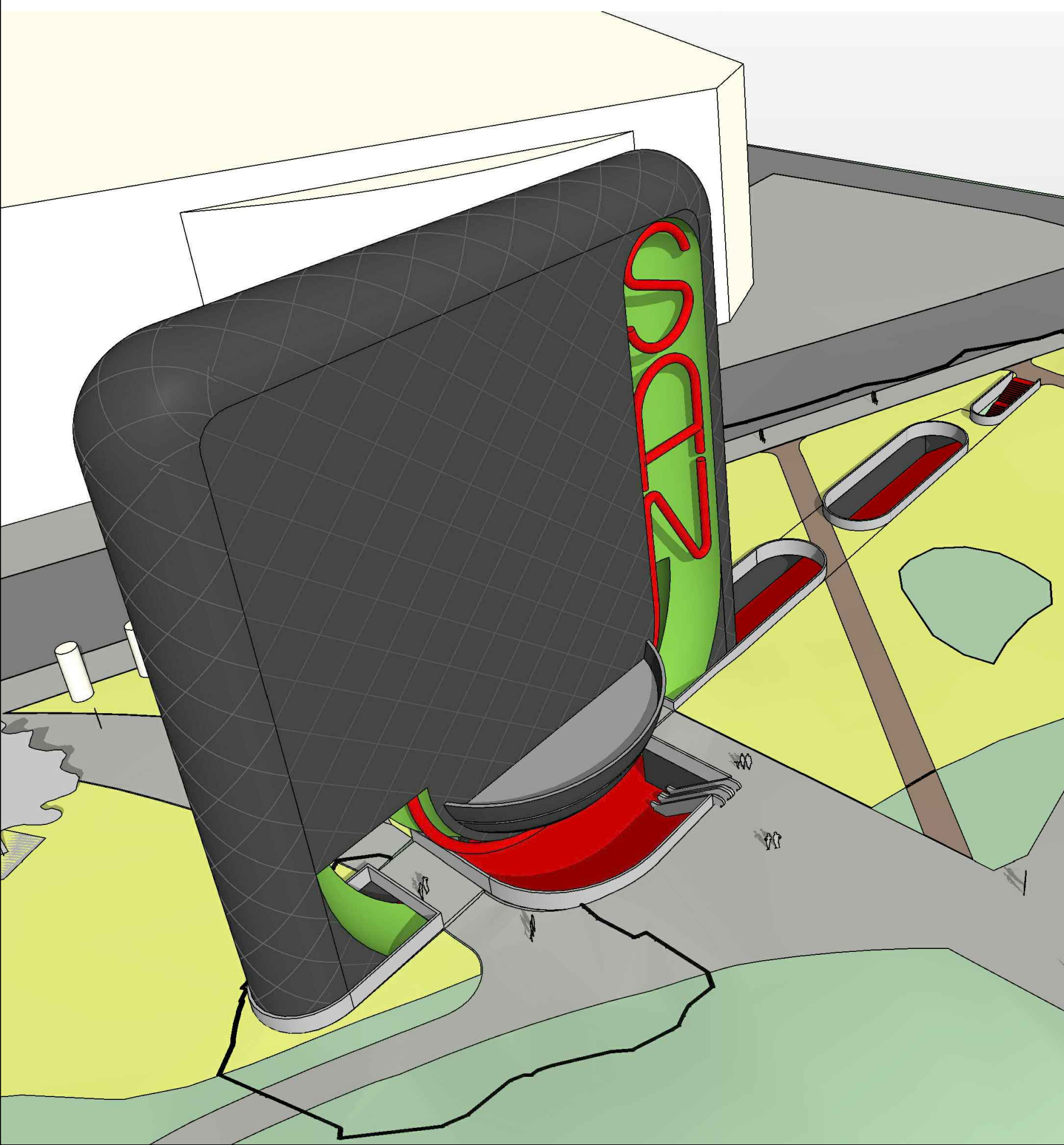
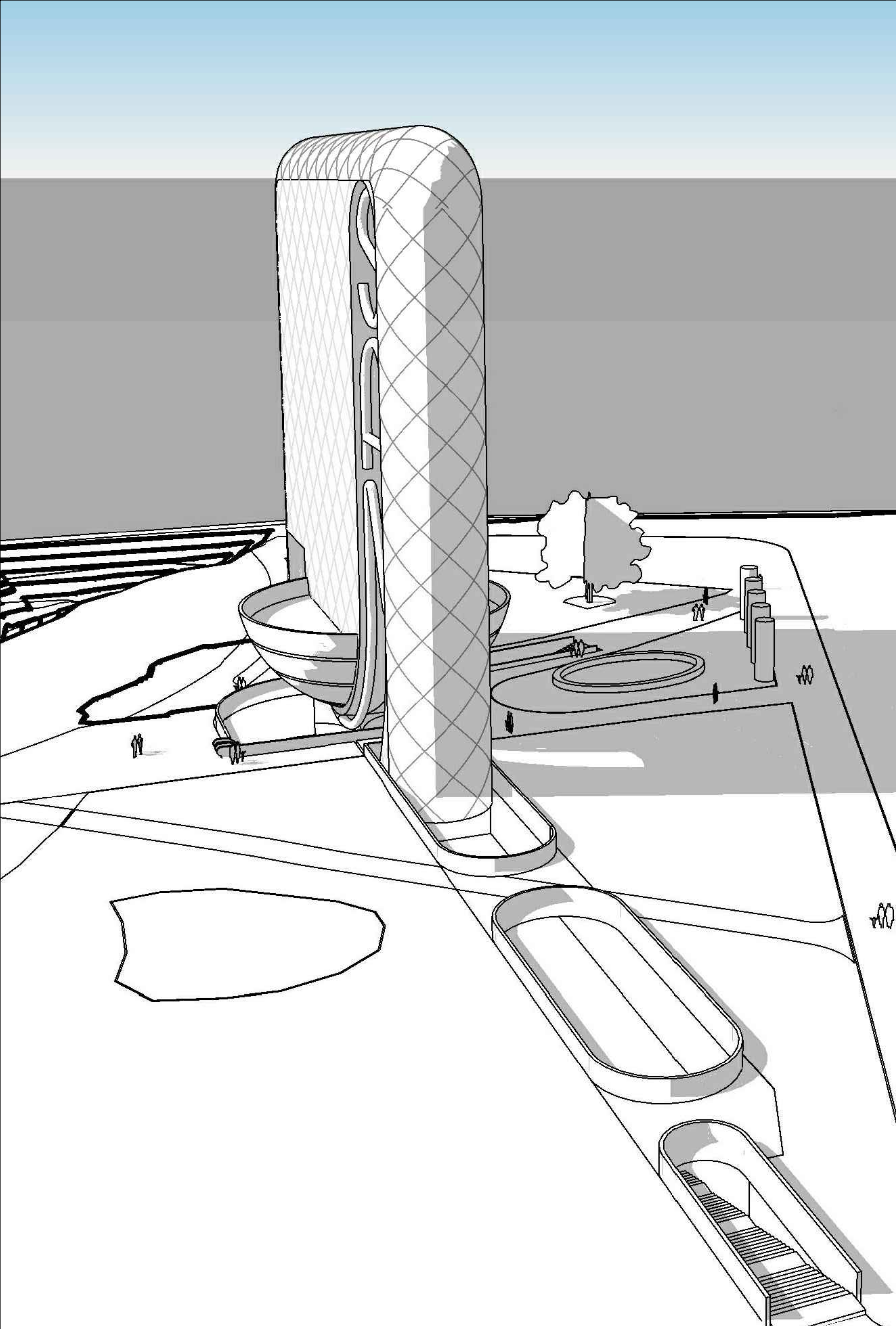


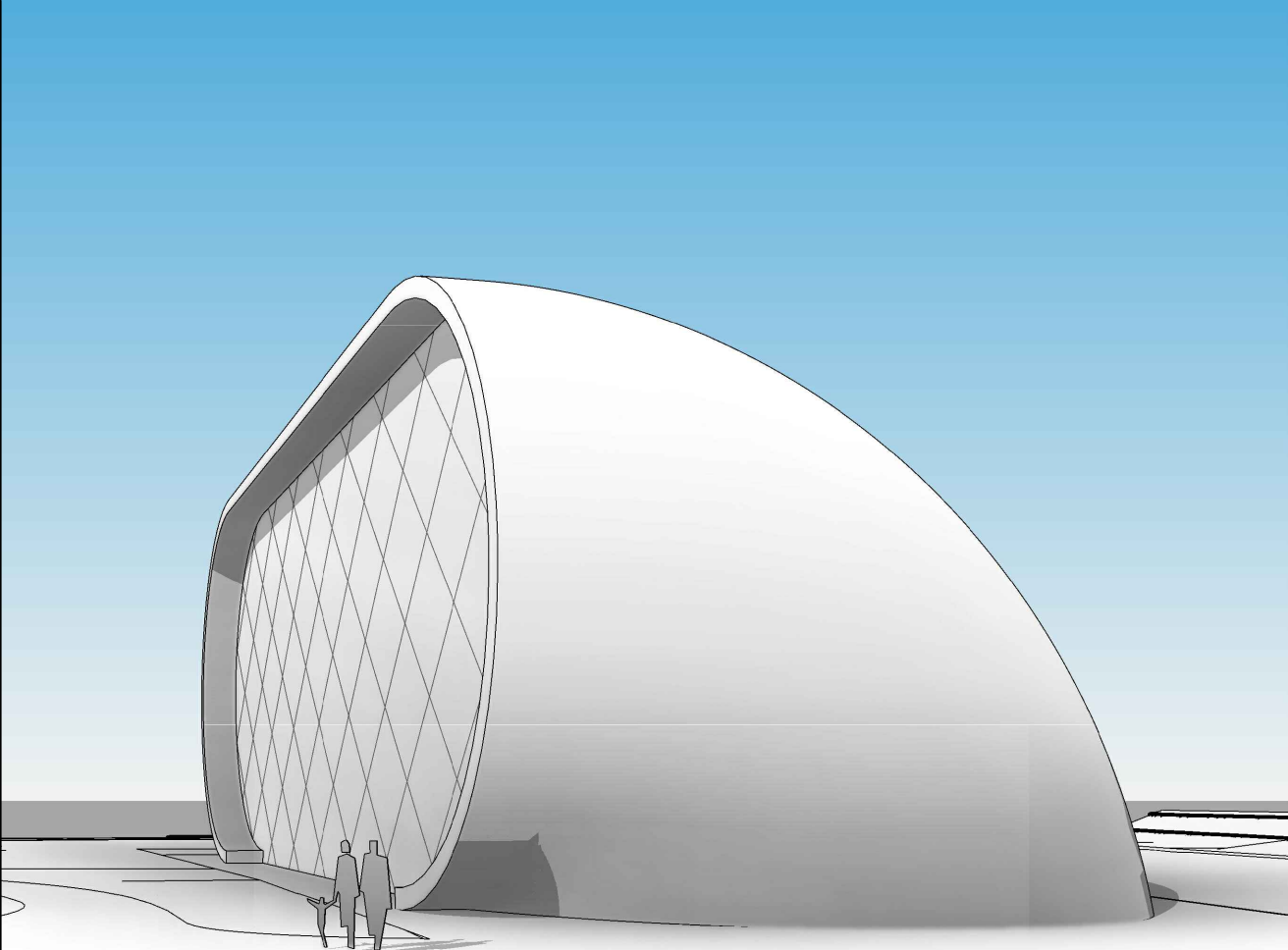
«The Silicon Chip»

Guadalupe River Park is a giant motherboard with many important functional elements.
The compositional center of this complex is...

"The Silicon Chip, placed in the connector of the Earth"!



The form idea embodies all the power of IT in the modern world: this chip contains important information for all mankind and changes the World, embodying the wildest dreams! On this **"Silicon Chip"** is emerging the name of the legendary **San Jose** city, which went down in history as the Capital of Silicon Valley, and will remain in memory for centuries.

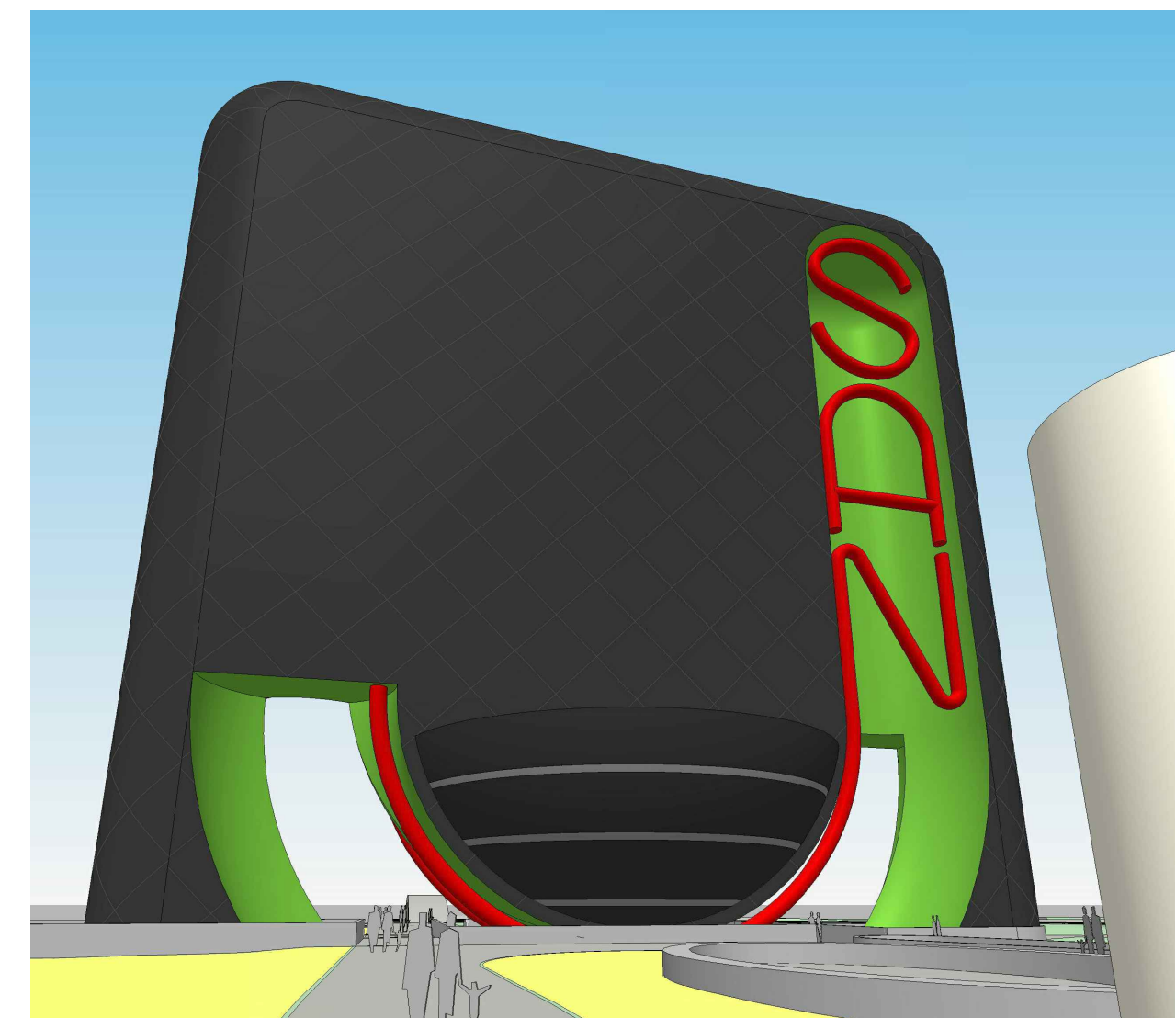
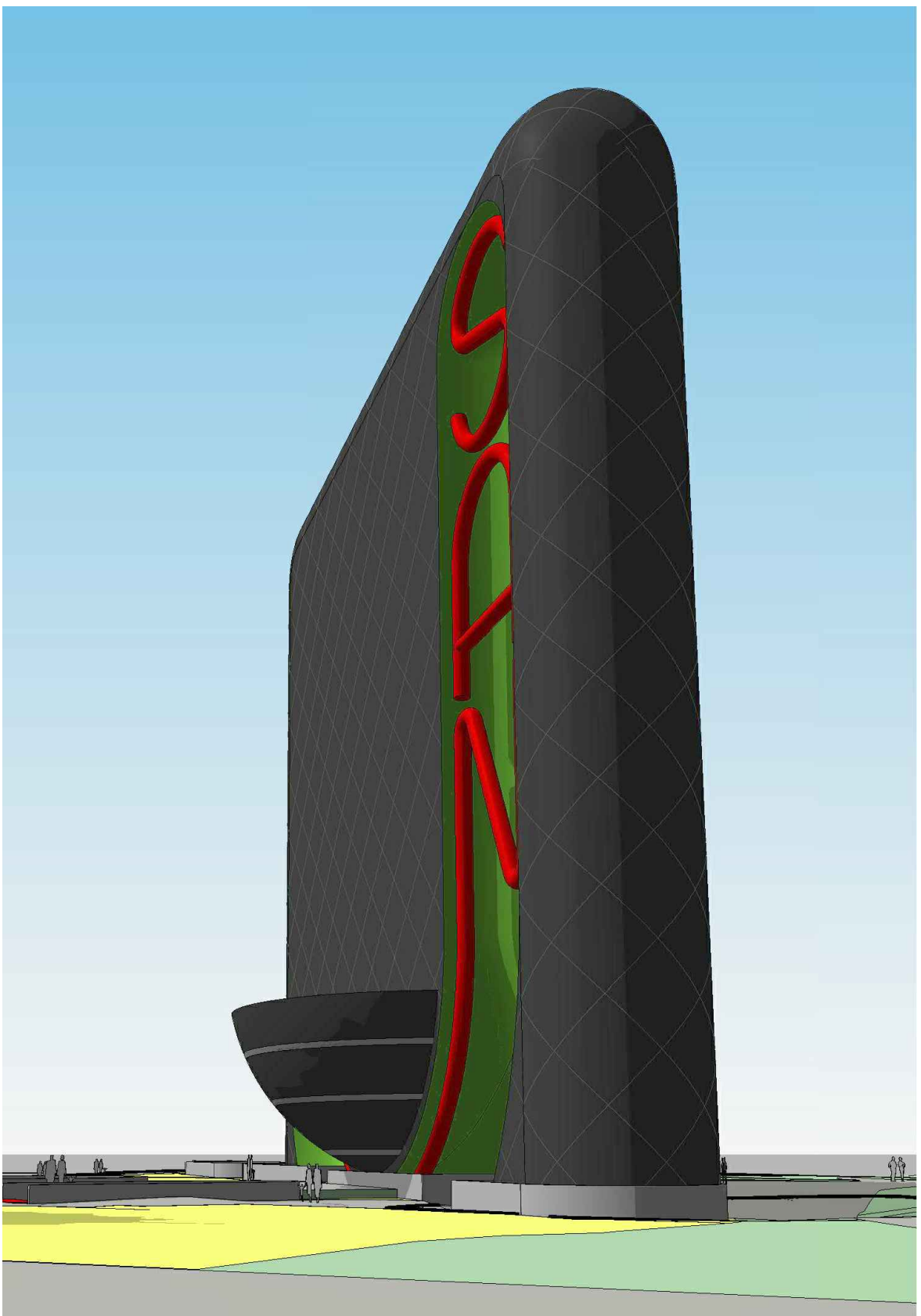
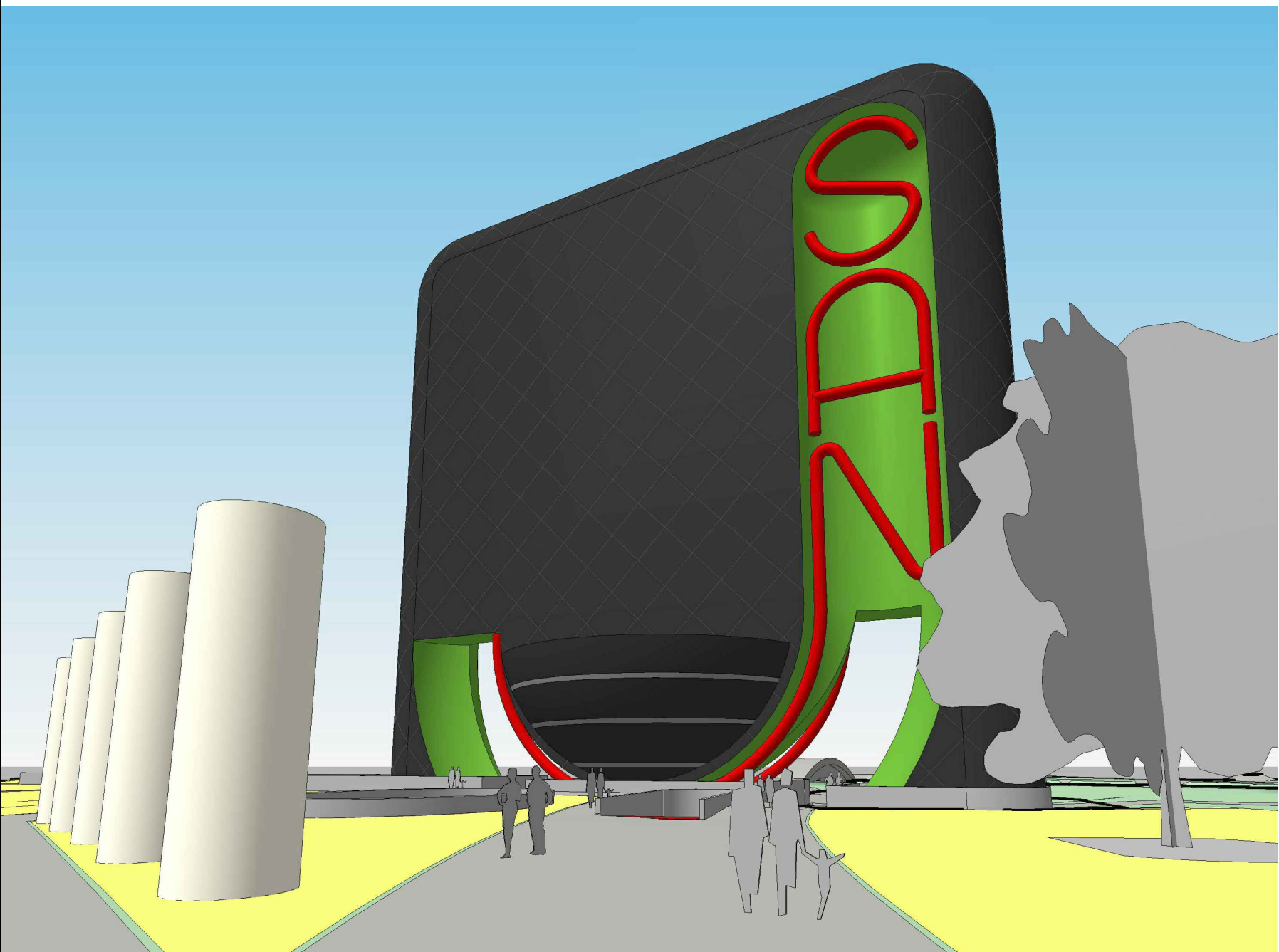
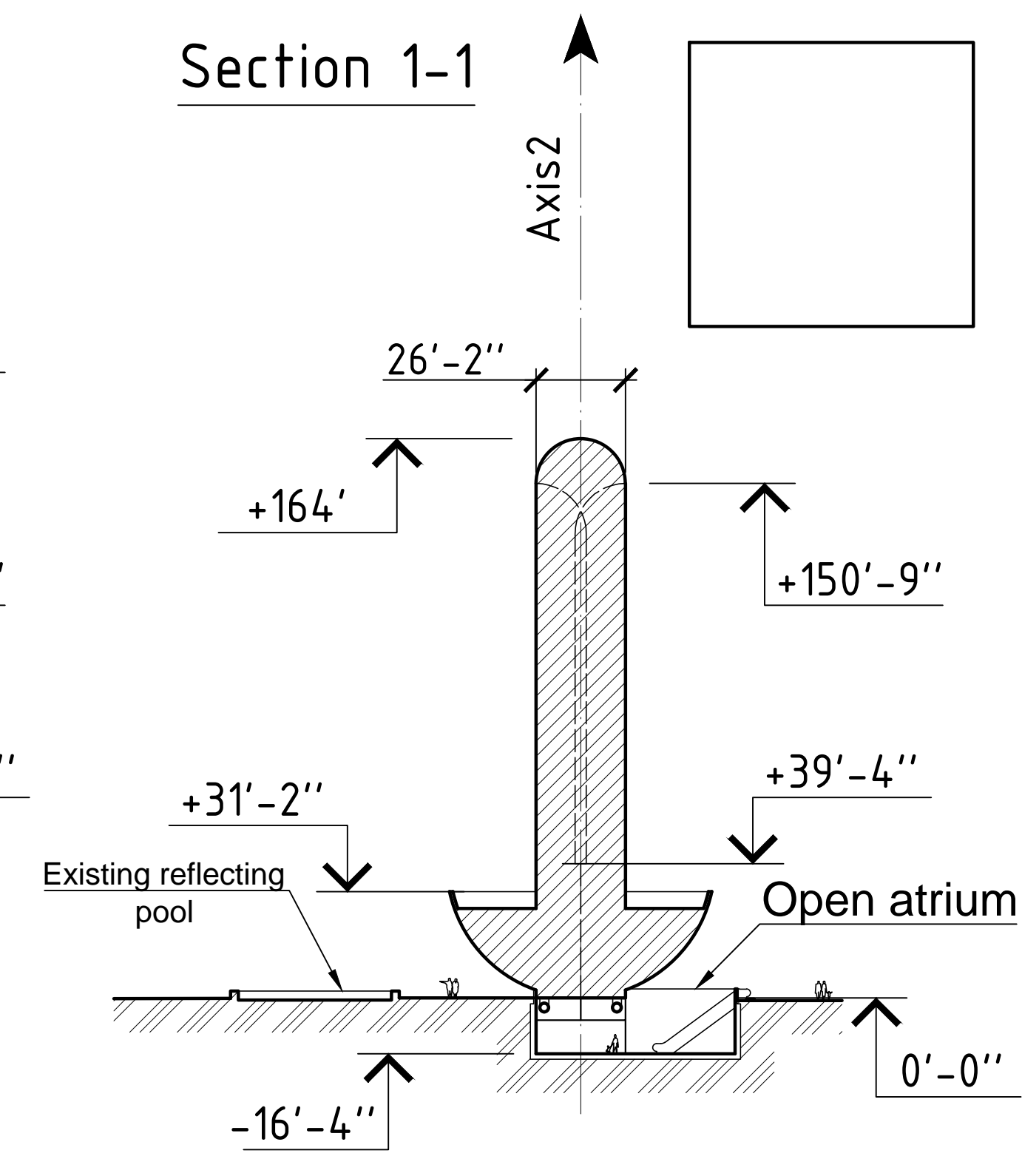
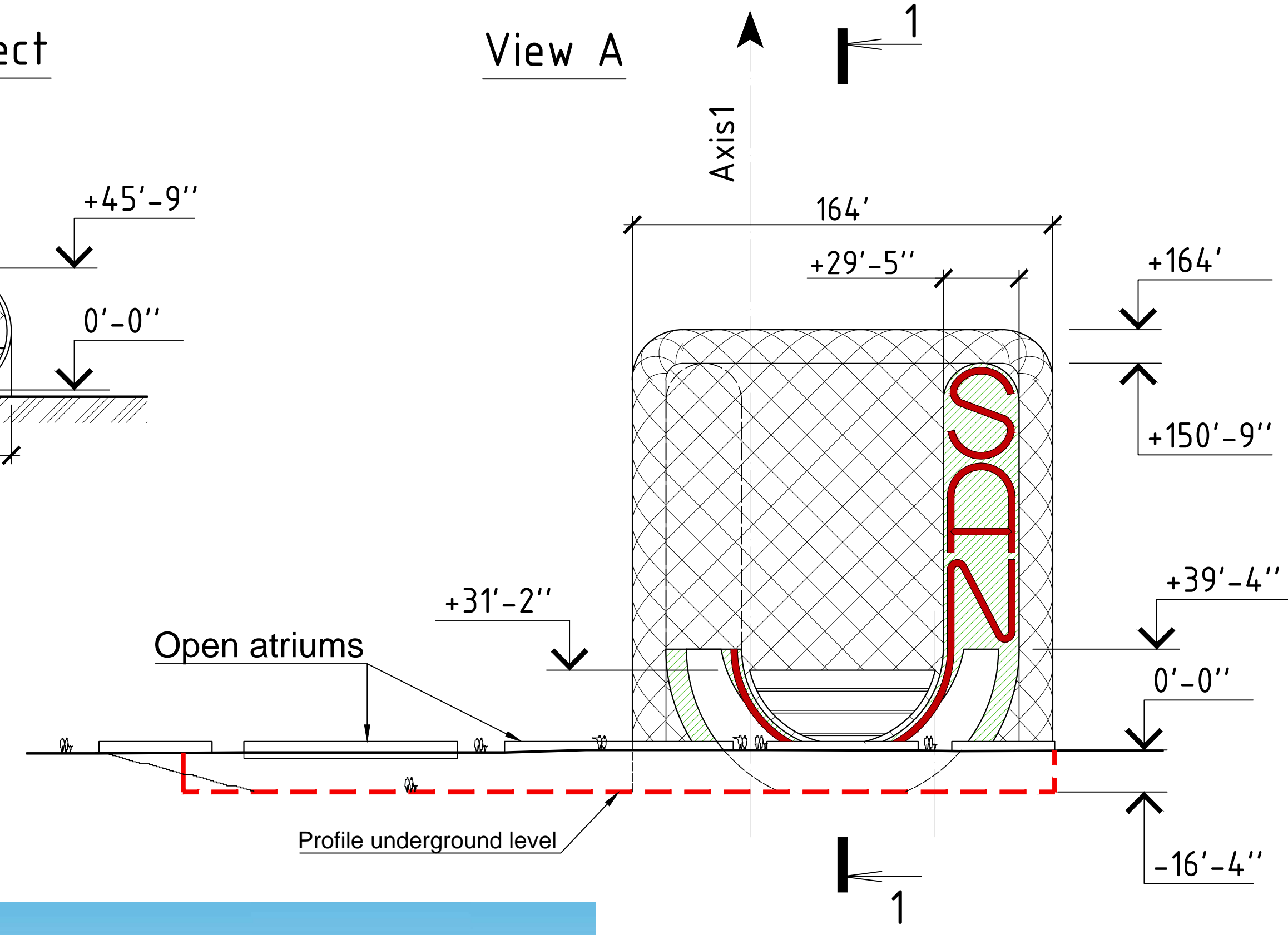
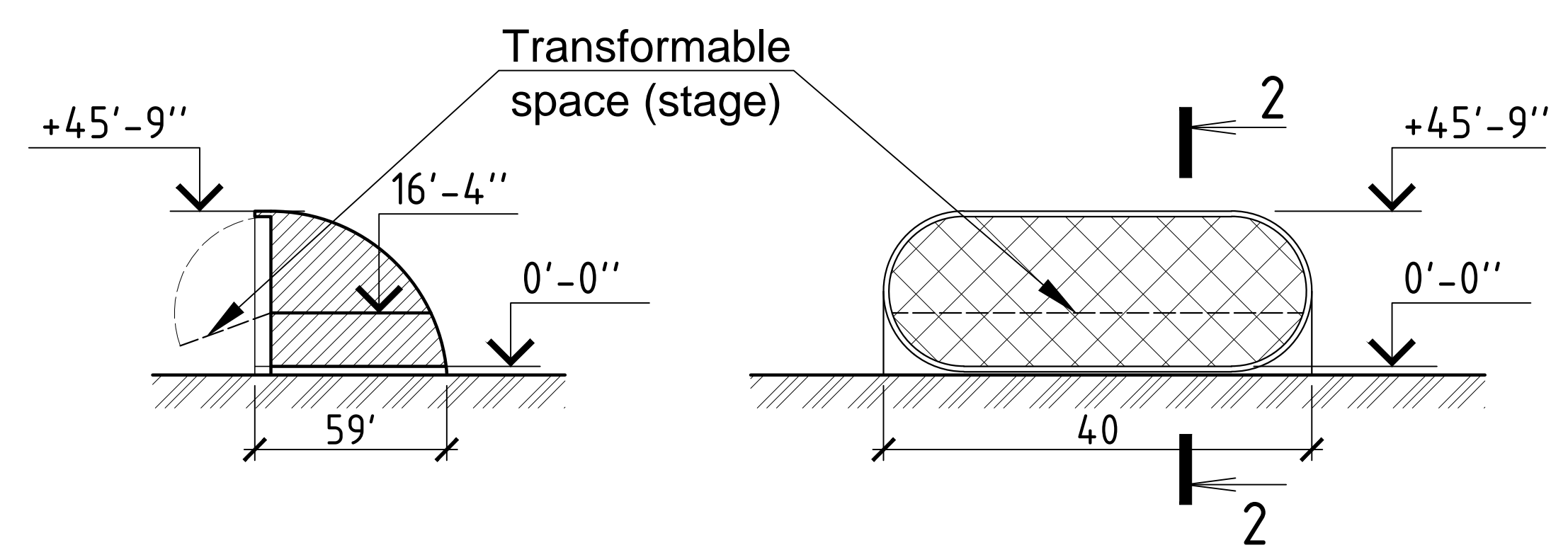


Section 2-2

Multifunctional object

View A

Section 1-1



MASTER PLAN
(SITE MAP IMAGE)



FIRST FLOUR SCHEME

TYPICAL FLOUR SCHEME

