

# The Bird's Nest

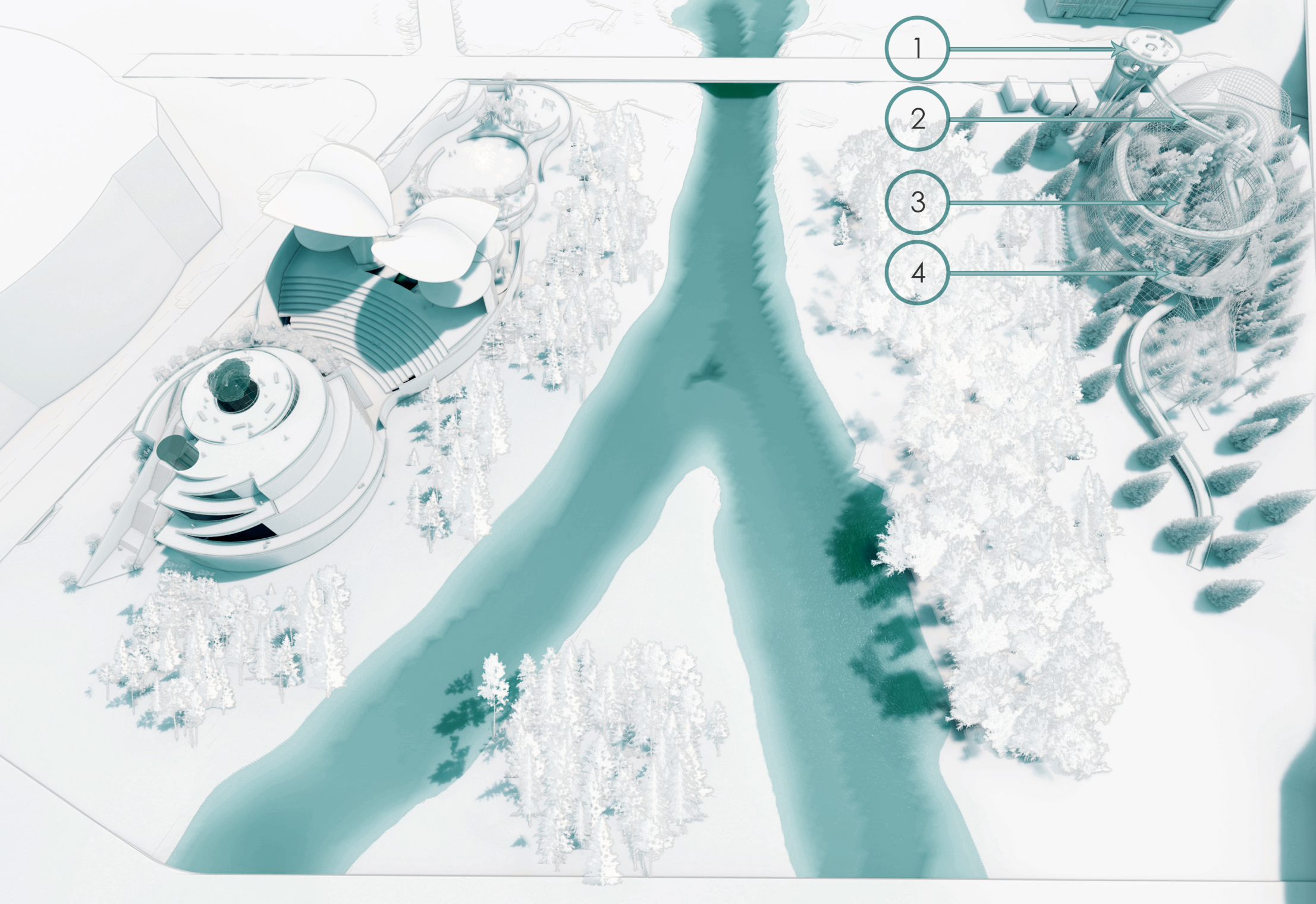
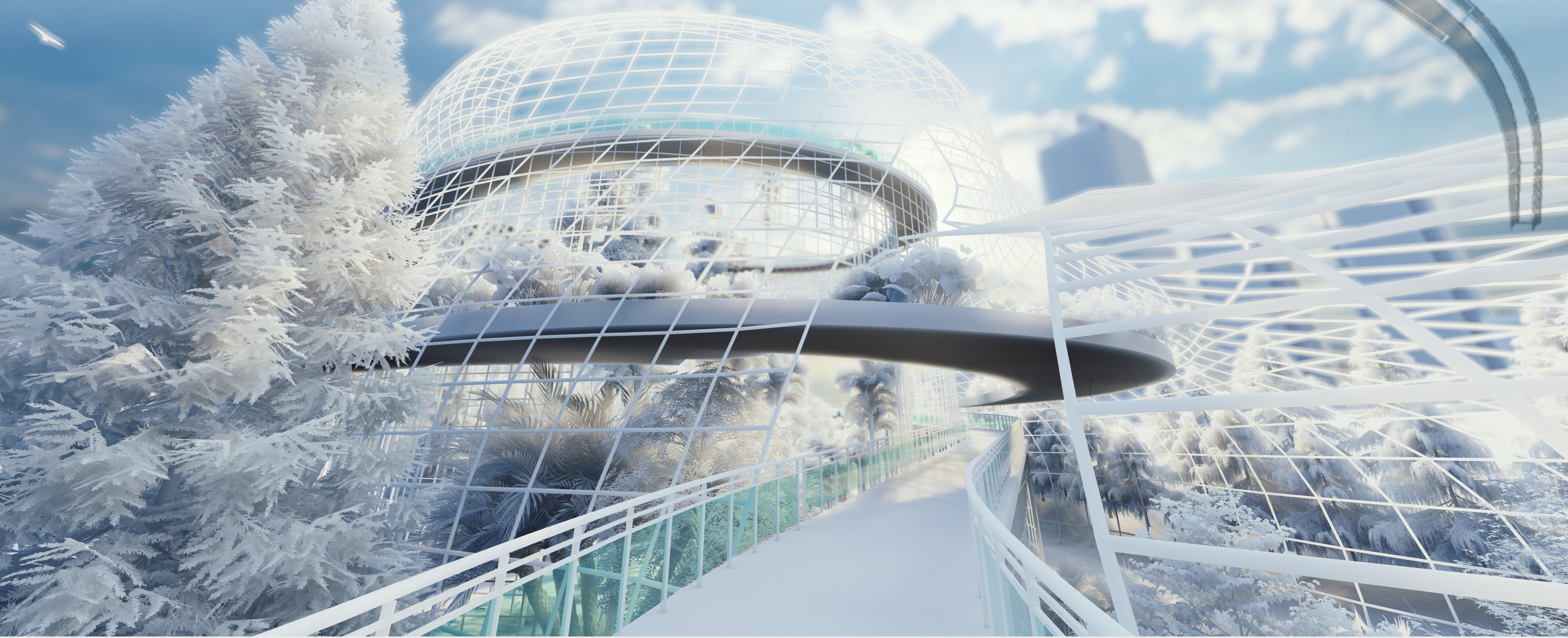
## Area Green East

As you stroll through the Bird's Nest, you'll find towering trees, gorgeous plants and flowers of lots of varieties, & plenty of birds. You can either walk through on ground level to get up close and personal with all the trees and flowers or you can take the over 1,900 foot long boardwalk which will give you a bird's eye view as you walk through the tree tops to explore different views of the tranquil Guadalupe River Park area. Once you arrive at the end, you'll be at the lookout, give you a 360 degree view of all things San Jose. From certain a certain distance and angle, the Bird's Nest is in the shape and form of a bird's head...

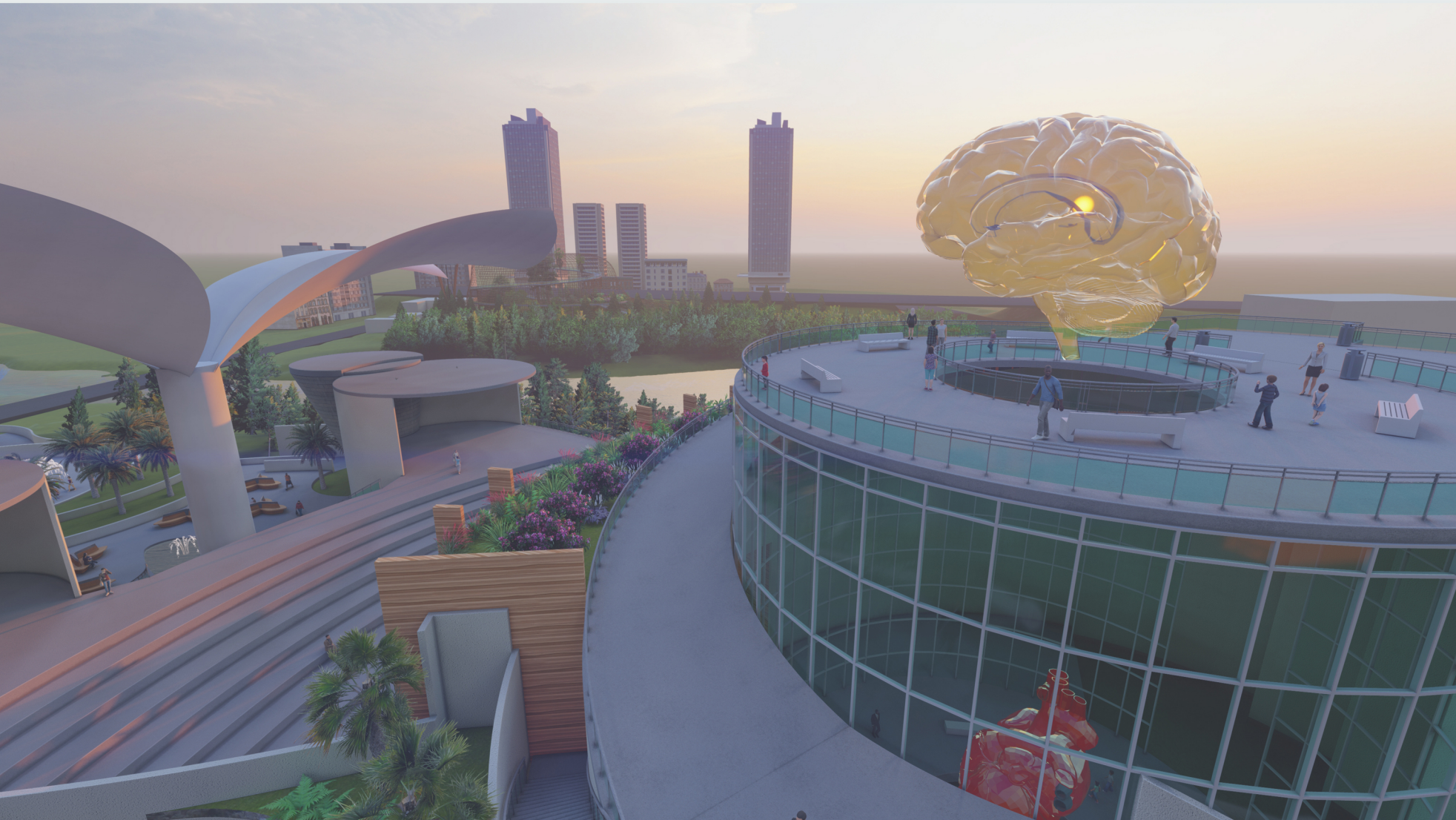
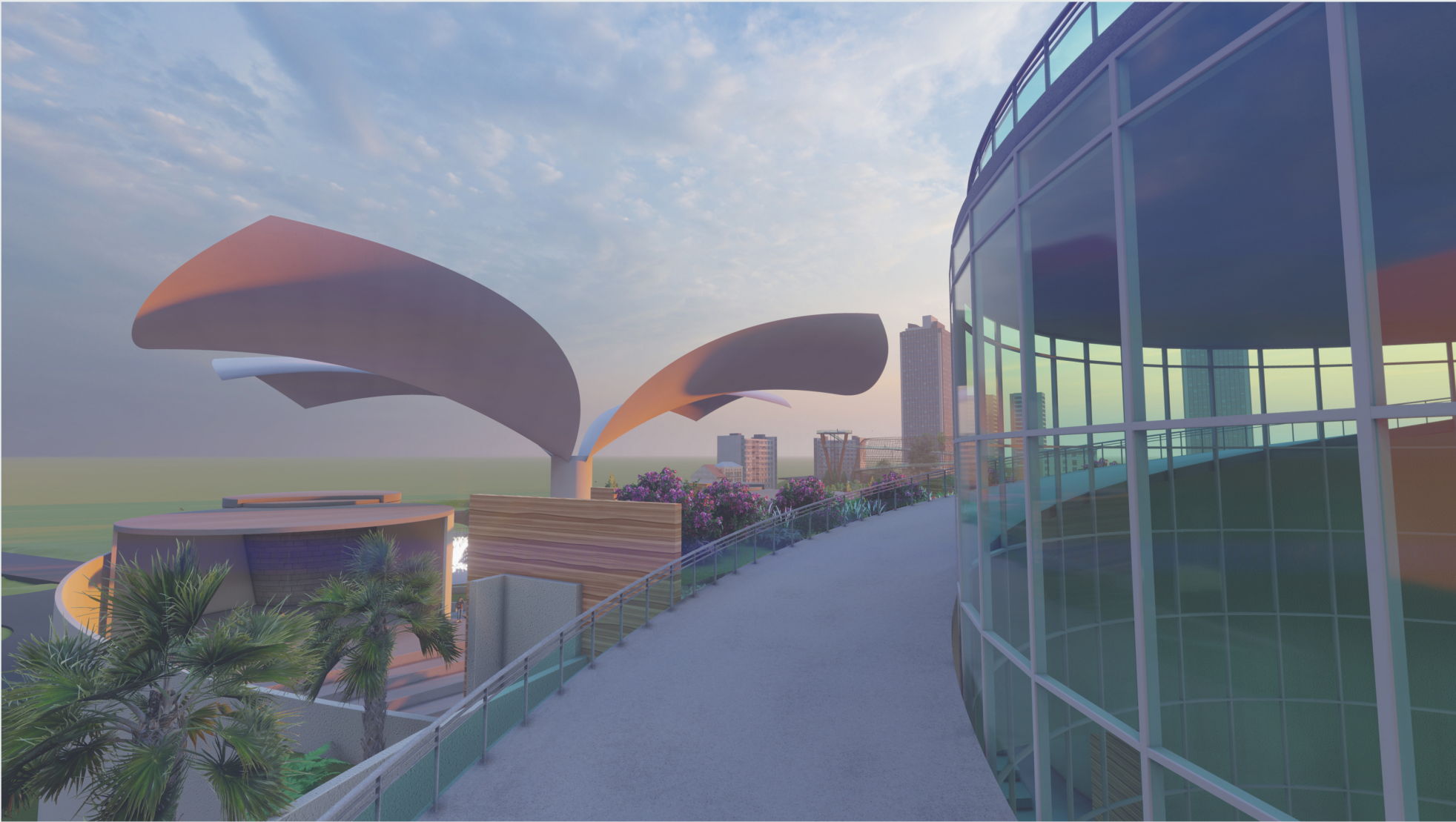
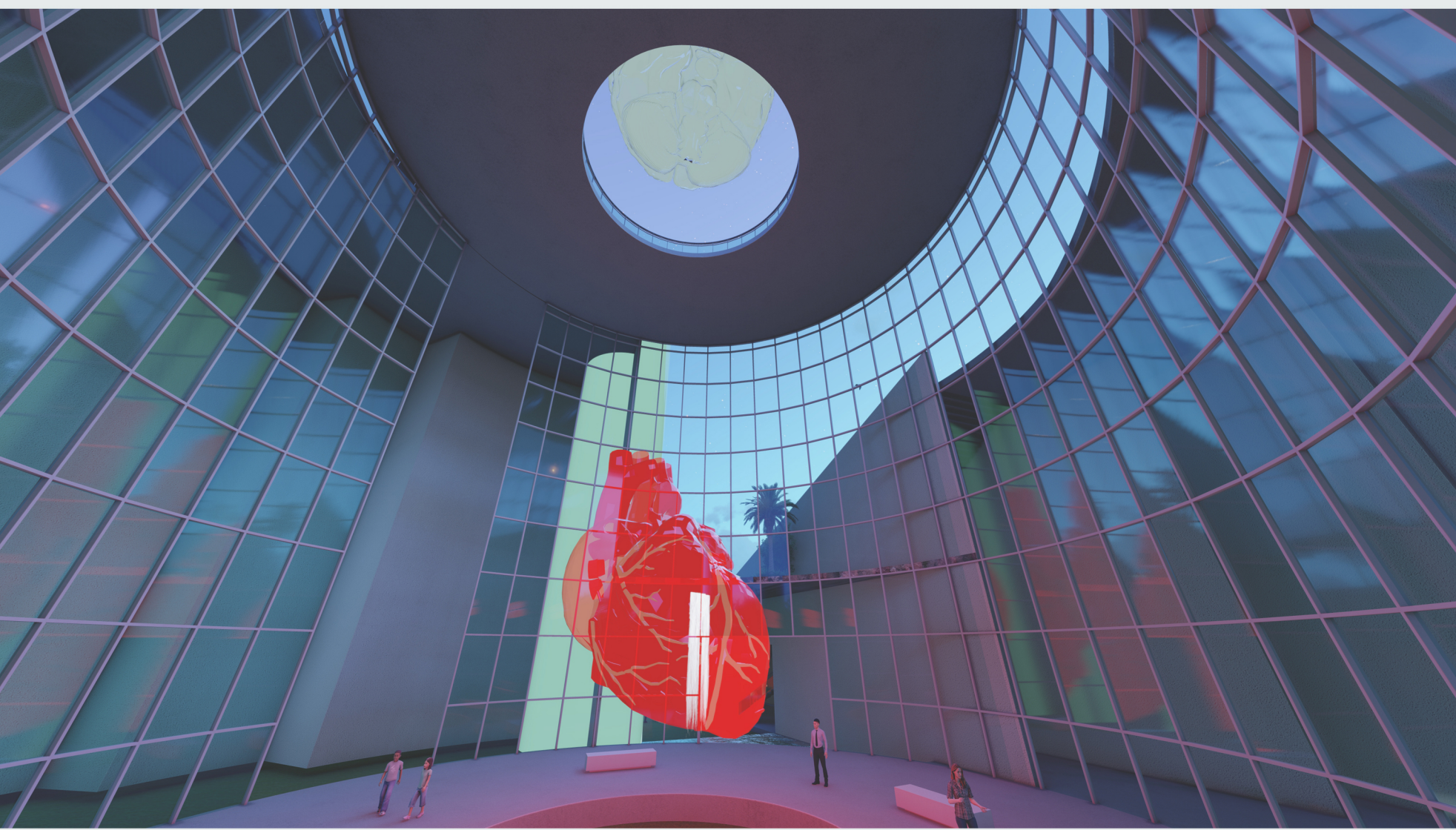
### Features and Amenities:

1. Look out tower (with a central elevator)
2. 1,928' boardwalk reaching over 80' in height
3. Ground level walk way with benches
4. Trees, plants, fountains, sculptures, and birds

*"As an architect you design for the present, with an awareness of the past, for a future which is essentially unknown."*  
- Norman Foster







# The Head & The Heart

## Area Green West

Knowledge and Compassion... two words to describe the mind and one's emotions. The brain and heart will be sculpted primarily of glass and poly resin with opening to inside to add LED lighting to appear as though it is lightning on the inside of each organ. They'll be connected to each other representing the connection between one's compassion and one's logic. As Silicon Valley advances in knowledge and compassion, we hope this monument will help share the cultural diversity as well as love towards one another.

### Features and Amenities:

1. Playground and kids area
2. Splash area and water fountains
3. Concessions / Restaurant / Gift Shop / change area and restrooms / weekend local market area.
4. Amphitheater with a butterfly ceiling and a dual stage above the primary stage. The below stage will feature a glass wall (that can be closed off if requested) to view the heart inside or "back-stage" if you will.
5. Brain connected to the heart below
6. Cultural museum / sculpture area / hanging garden / water falls / glass elevator / restrooms / look-out area at 75' in height

*“Whatever good things we build end up building us.”*  
*- Jim Rohn*

