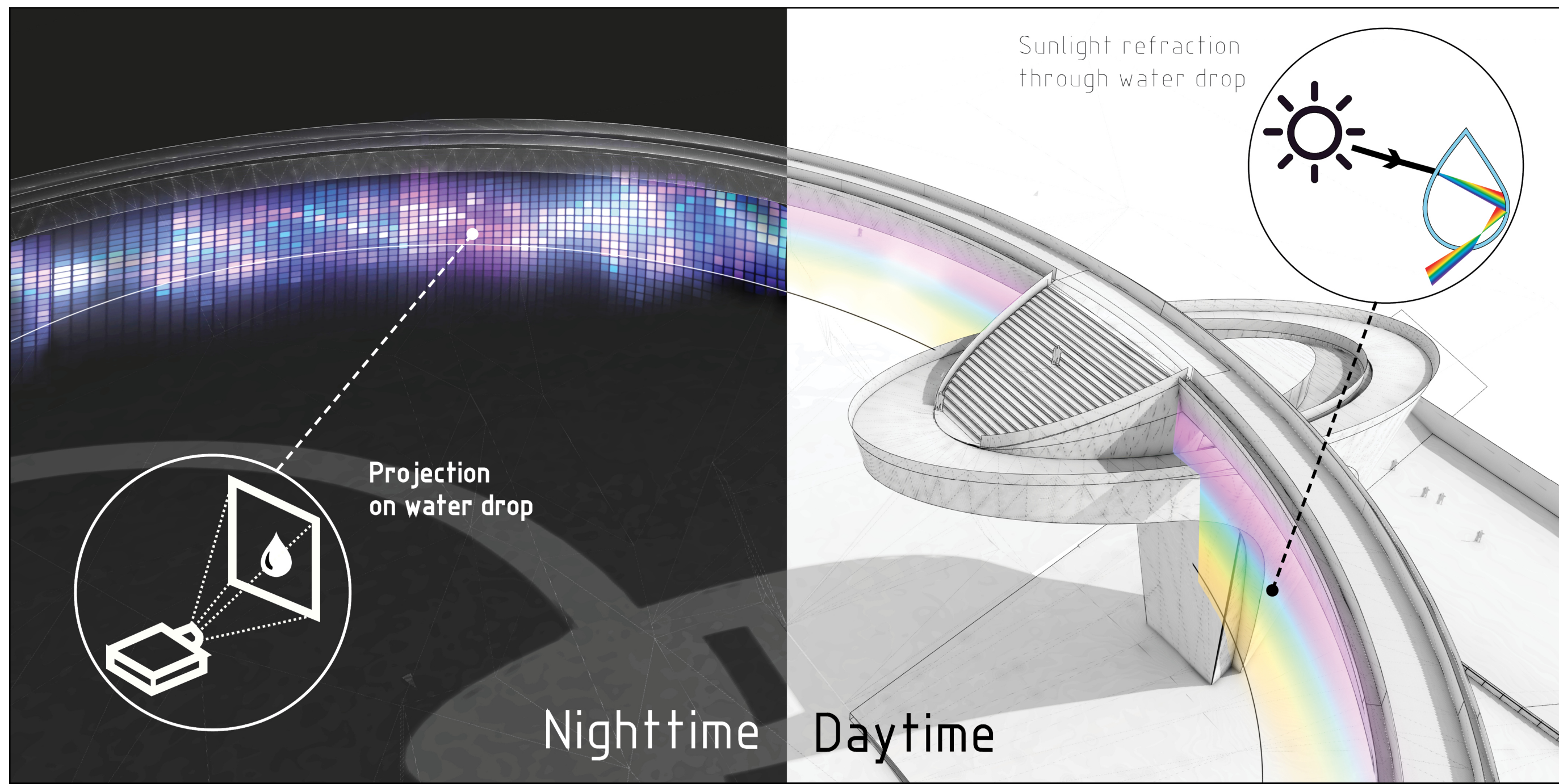
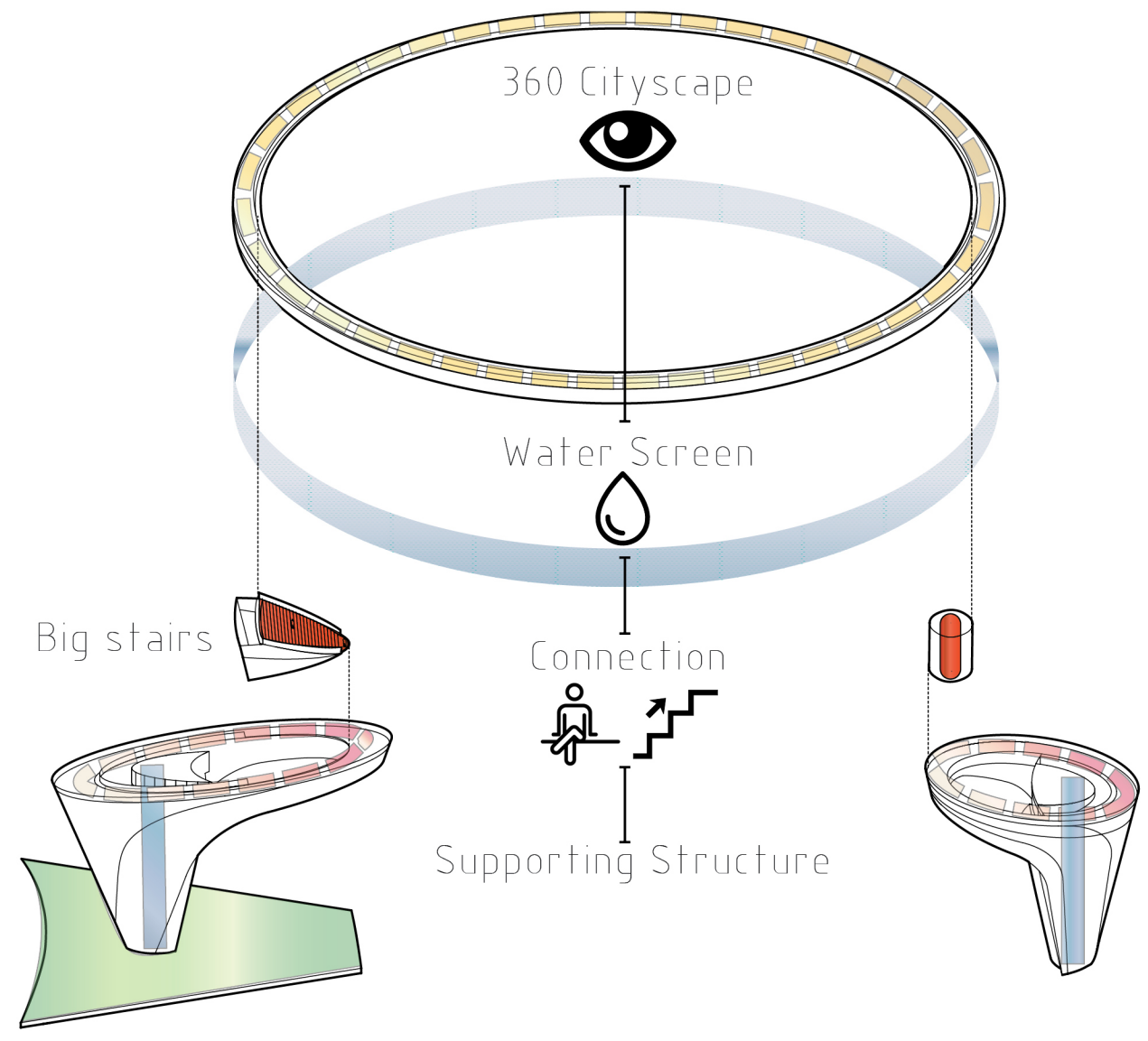


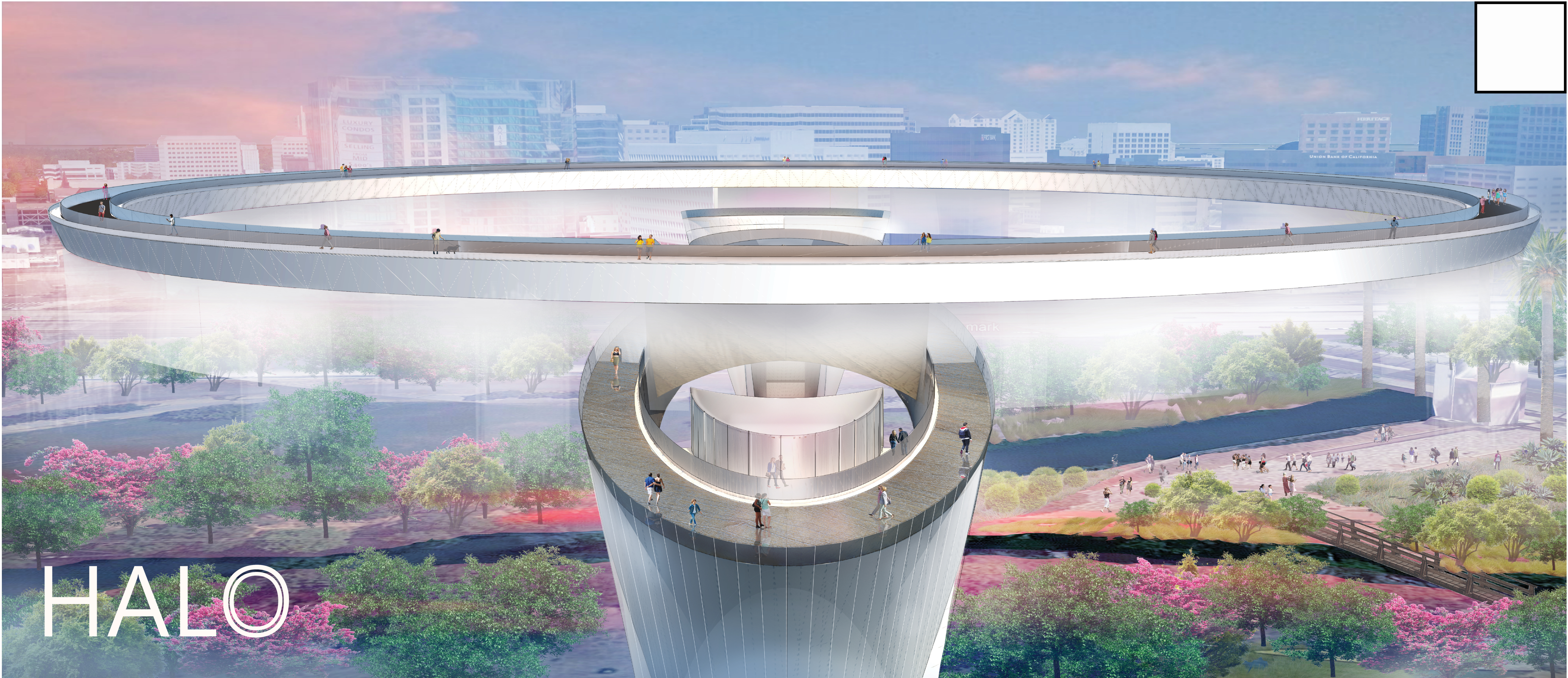
Lighting



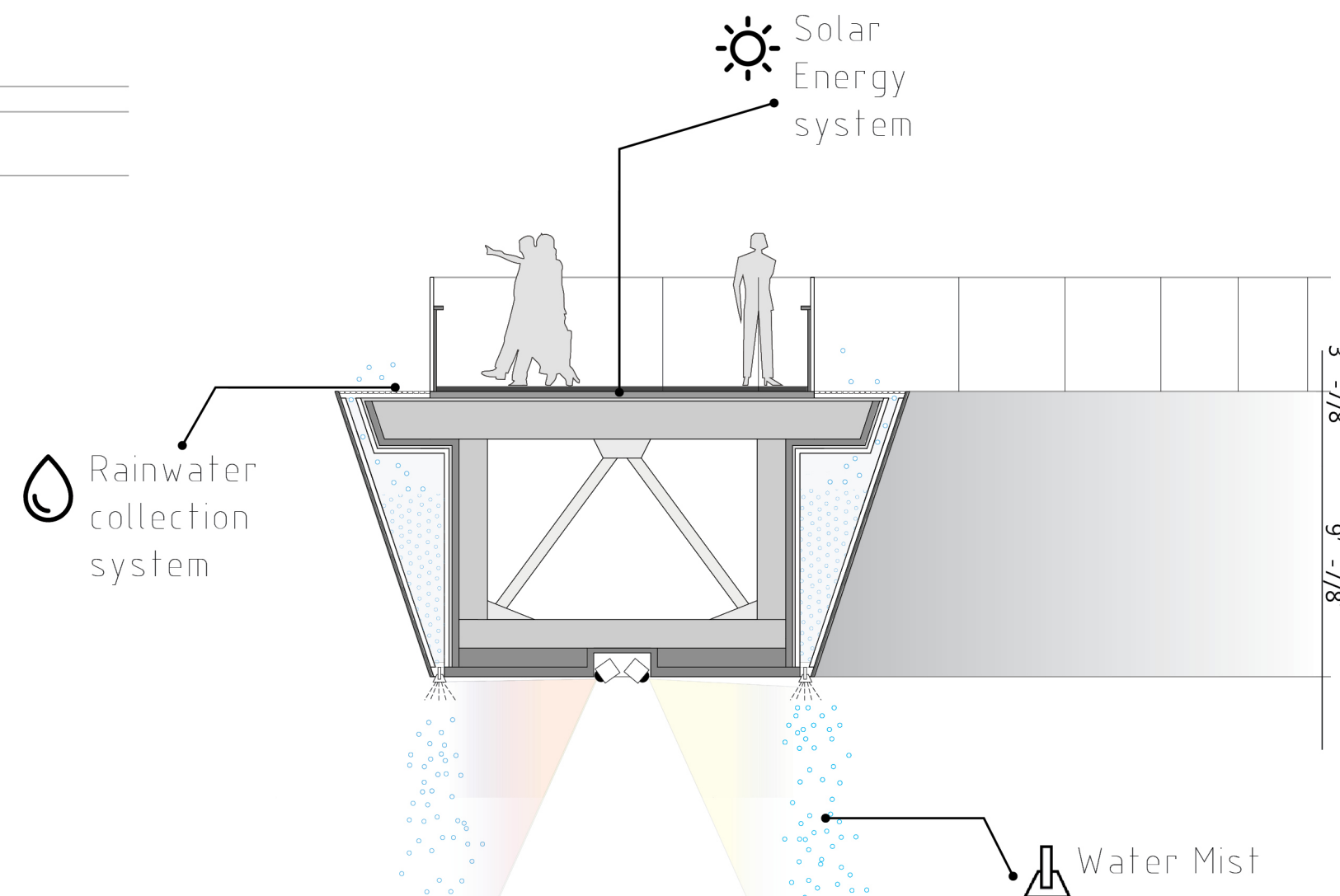
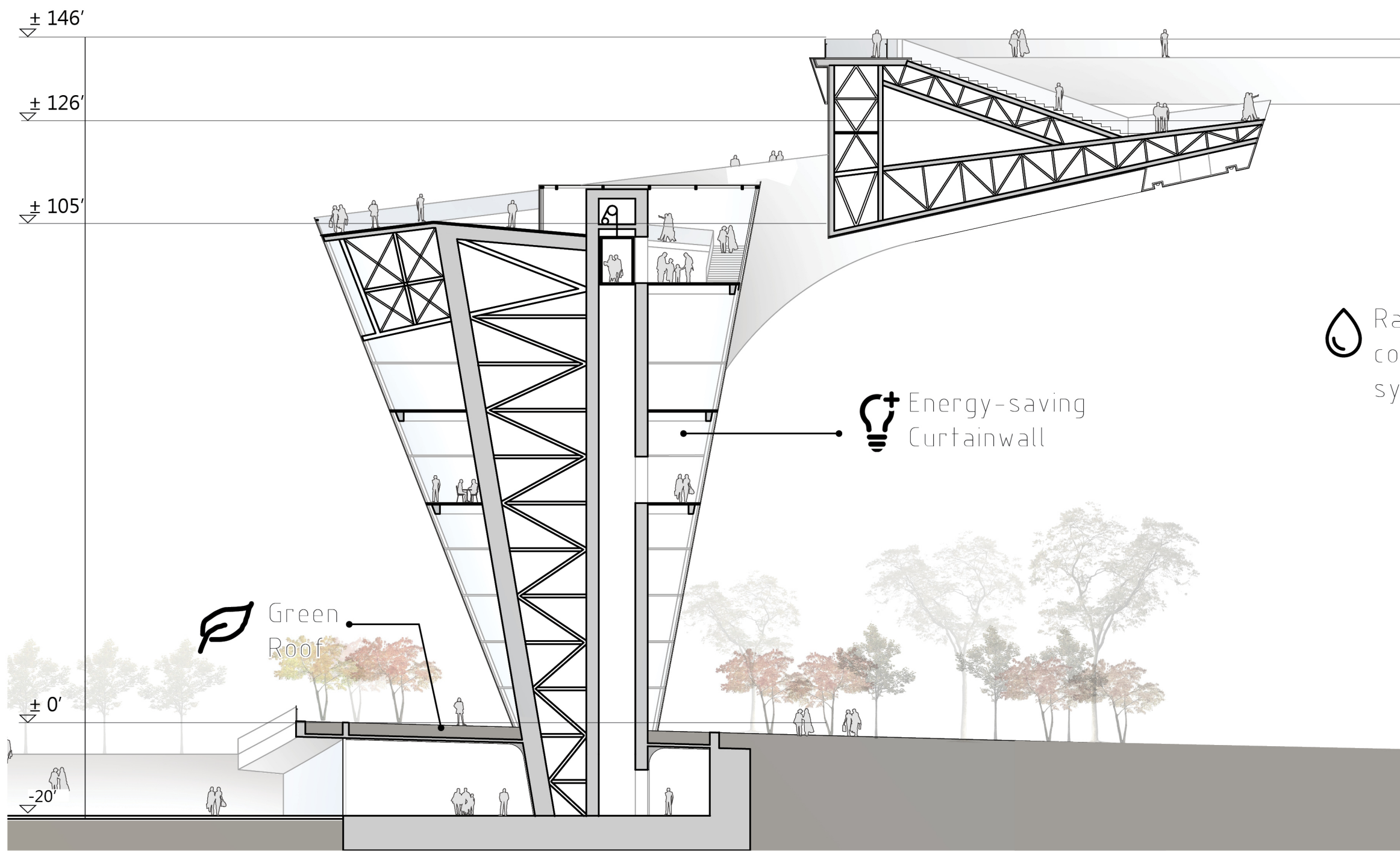
Functional Diagram

360° See and be seen
The ring is the major element and also the only elements we want to highlight, while the two big structures on each side also play an important role in supporting and transporting. People can go up through the elevator and walk on the HALO. One the HALO, people can view the park and cityscape in 360 degree. Below the HALO, landscape and cityscape are framed, no matter where you are, the HALO will be there.





Section&Ennviroment Friendly Design



Tiny Water drop makes big effects
A series of sprinklers will be installed along the bottom edges and will create a delicate water mist along the HALO. In the sunny days, a rainbow will appear when sunlight goes through those water drops. In the night time, the tons of water drops become a screen, a projector will create dazzling light effects on it.

Technology and Environment friendly design
The shape and location of HALO make it well connected to the rest of the city physically. We also want to apply new technology to enforce this connection. We create several virtual lines pointed to certain city landmarks, when people sight lines overlap with those virtual lines, the detailed information or story will show up through their smartphones or their other terminals. You feel the city both physically and visually. Sustainability architecture is the future. Water collection system, solar energy system, energy saving curtain wall system and environment friendly materials are applied on HALO. And few land is occupied by construction, so the park nature can be kept as much as possible.

