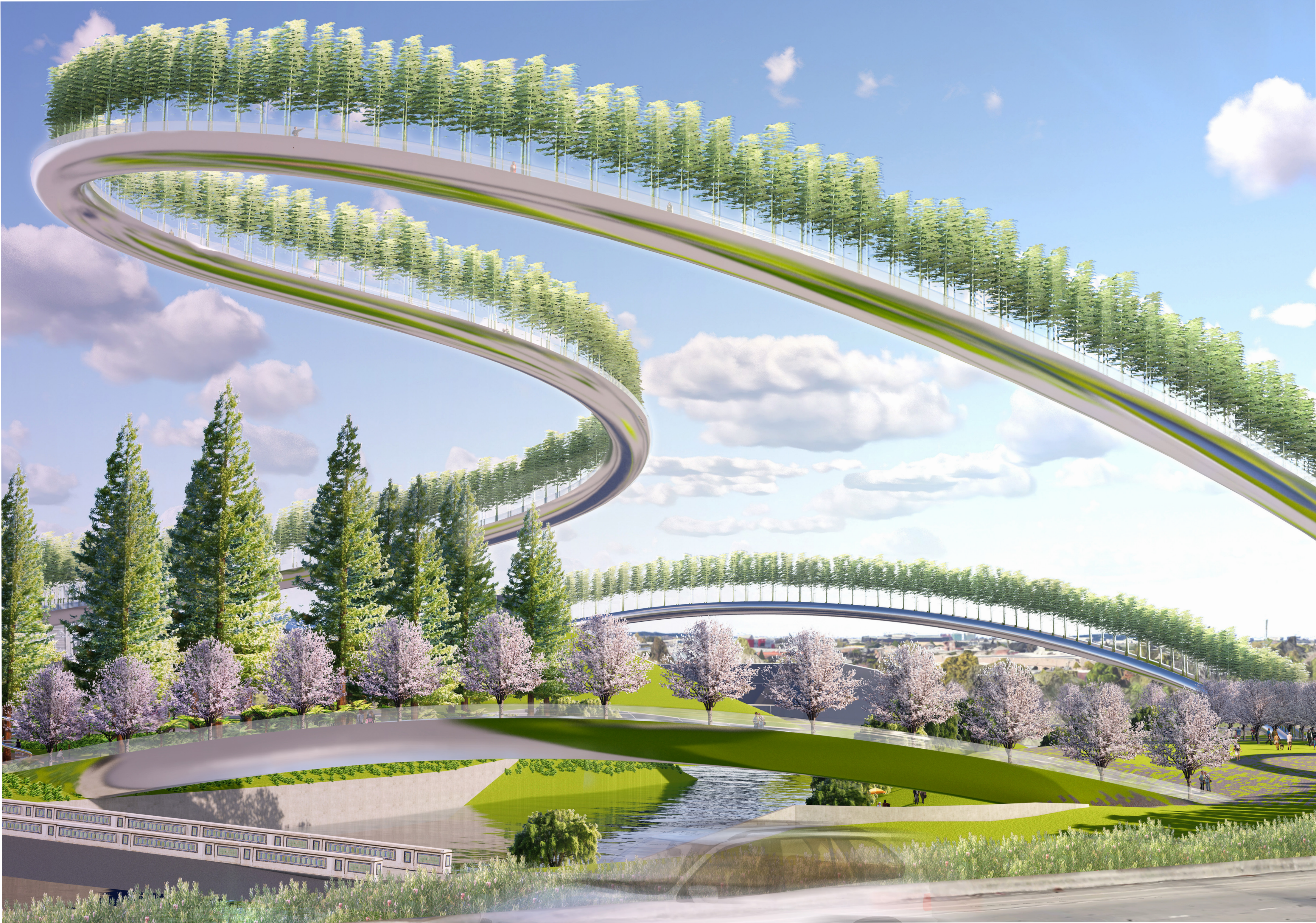
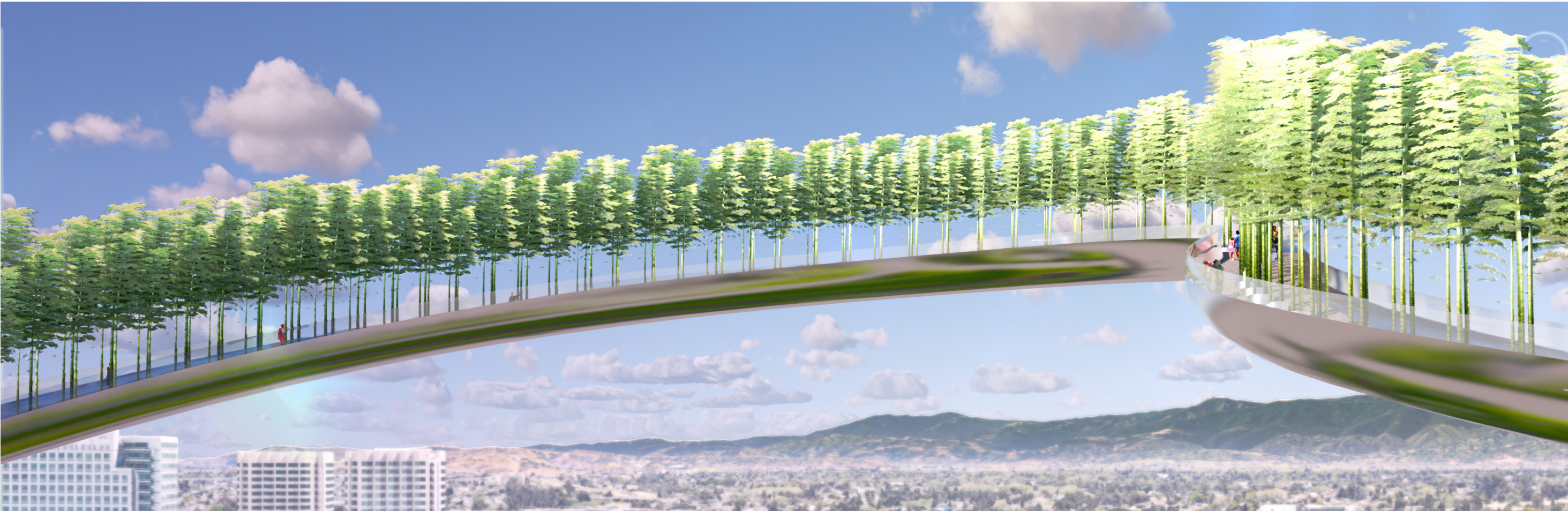


HORIZONS PARK

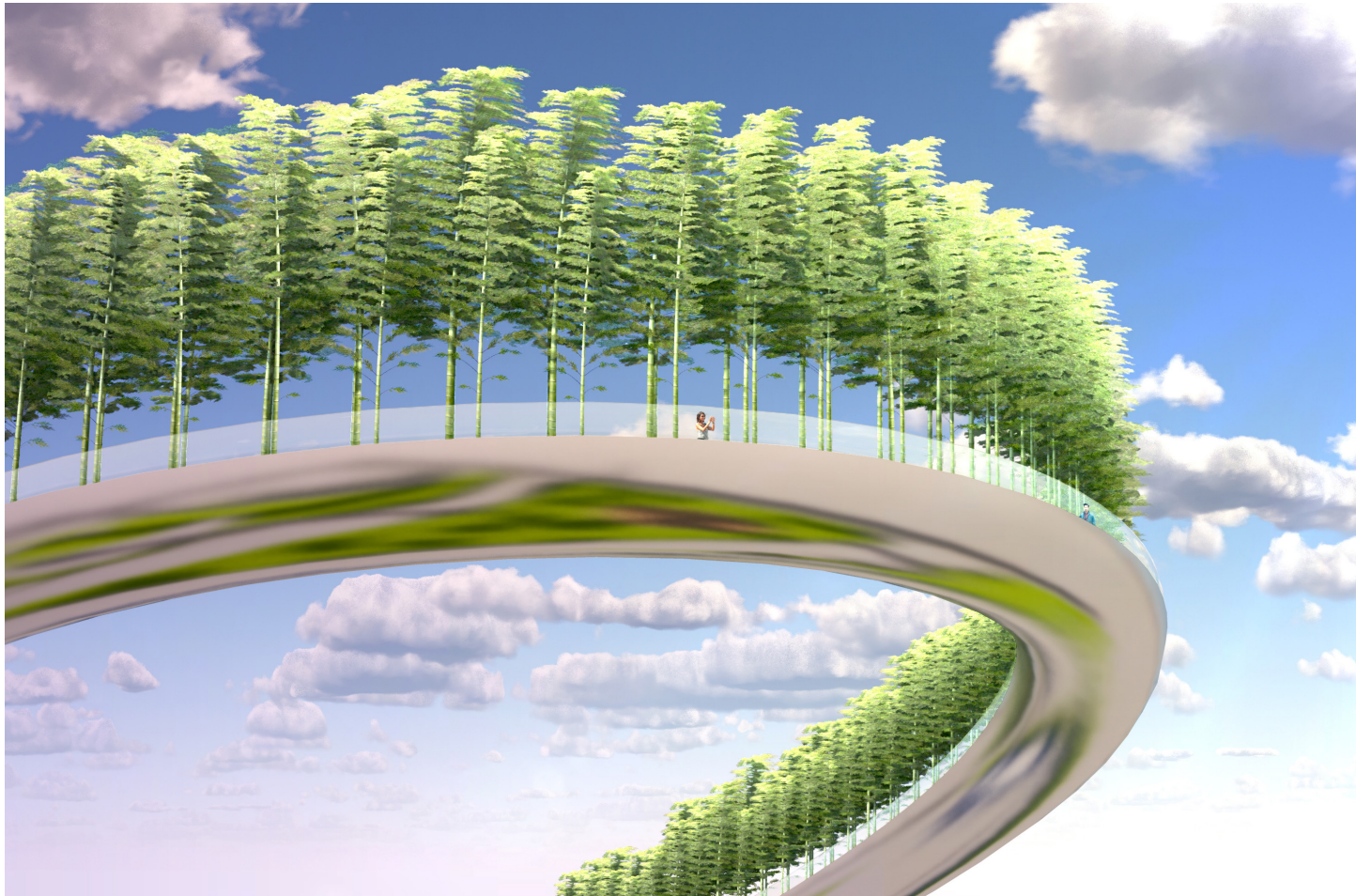
A horizon is the furthest reach of our vision, a glowing edge, a moment where the present meets an unknowable future.



Horizon Park | View from the Highway



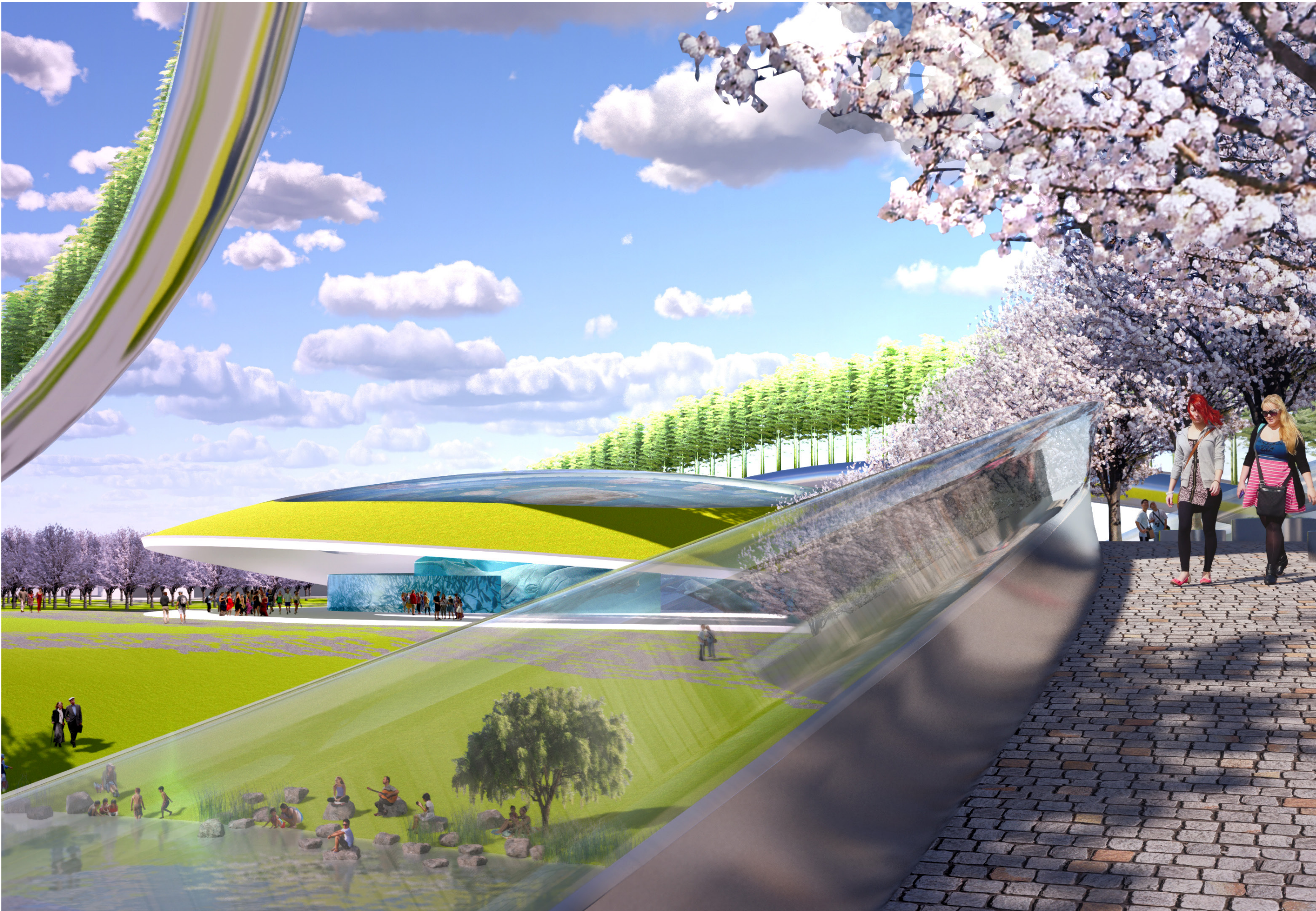
The Event Horizon Sky-Walk carries visitors to the sky and floats bamboo forests across the clouds



Event Horizon Sky-Walk Apex



Event Horizon Sky-Walk | Entrance Plaza



Apricot Orchard Bridge | View to Great Hall Pavilion | Intelligent Glass Program

The Horizons Park destination offers visitors a singular connection to the confluence, profoundly anchored to the land while generating a visceral sensation of being pulled to the future, towards new horizons. The program is an intentionally open plan, invoking iconic regional landscapes: headland, mountain, orchard, redwood forest. Natural forms reveal themselves as architecture and place: plaza, meadow, playground, amphitheater, pavilion. Headland becomes pavilion, mountain becomes theatre. Public spaces bring leading-edge technologies in support of accessible, democratic civic arts and education programming. The design intent is to interweave environmental stewardship and sustainability into both built objects and landscape. The designers are committed to net-zero water and energy integration strategies.



Event Horizon Sky-Walk at the Apex



View across meadow to Amphitheater and Mountaintop Sky Room | Intelligent Glass Program



Exhibition in the Great Hall Pavilion | Intelligent Glass Program



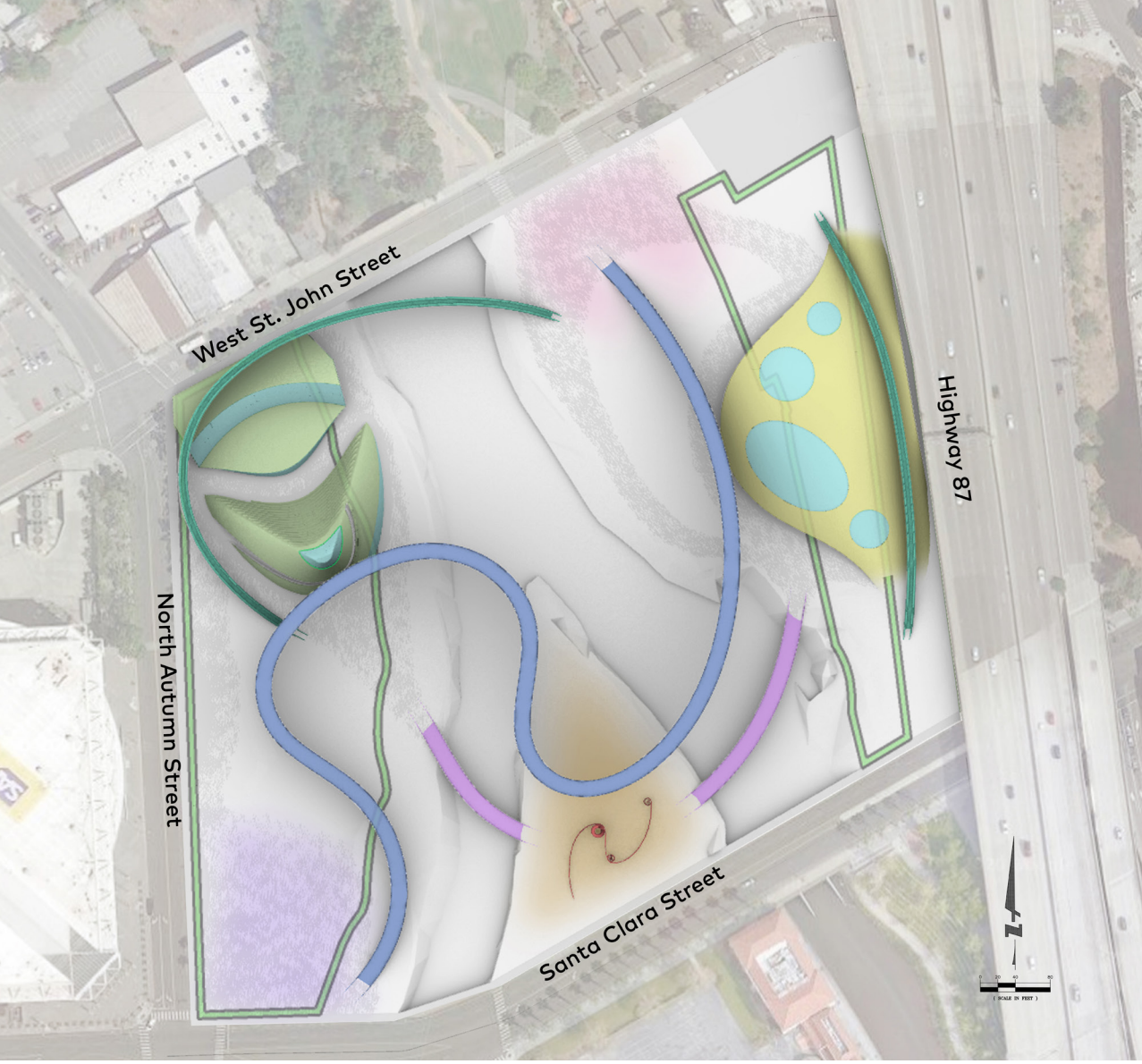
Amphitheater | View across river to Great Hall Pavilion



Apricot Orchard



Redwoods Playground



Site Plan



Horizon Park Panorama