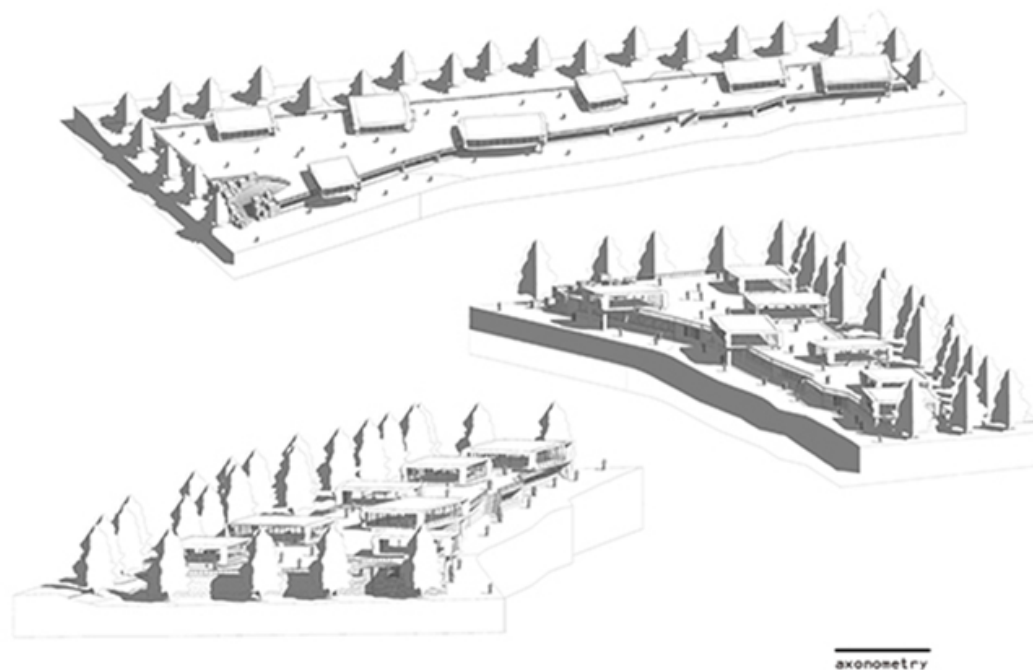
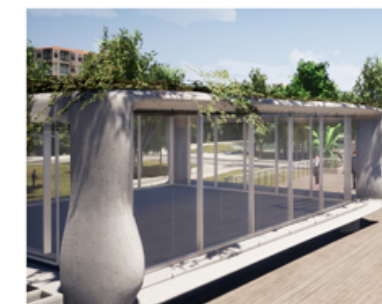




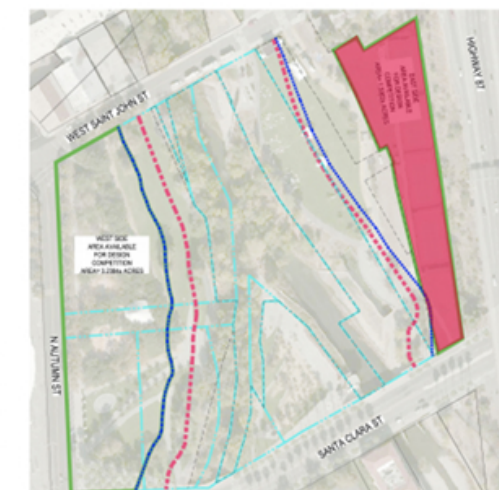
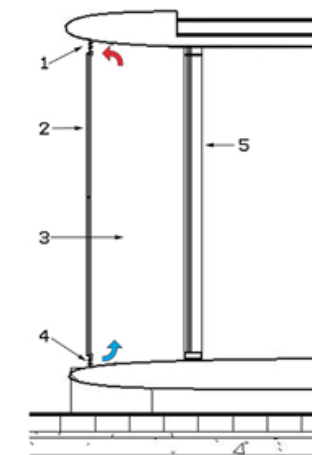
The main element of the project is the central space that regulates the entire composition. The outdoor park invites you to enter the large public space covered on the upper floor, where you can find the restaurant, the office. The office's expansive glass walls have on the extruded aluminum-wrapped enclosure with overlooks the park. Pedestrians can cross the upper floor using a stair that's across the building's upper floor. The restaurant is aligned along the building's facing side, with large glass windows giving view out across the park. The cube-shaped form of the building, the flowers on the cube shaped from of the building, the flowers on the cube shaped which it looks amazing. A remarkable transformation of a long and wide space into a beautifully conceived upper floor and the glass maximize the view. The upper floor served as the perfect outdoor room for the client's relaxation and entertainment needs. The concrete walls designed to complement the building's existing concrete block. These views are not just a visualization of a project but they are a way of reaching the perfect balance for the perception. It describes the process of getting the perfect tone to make a space or an image, perfectly balanced.



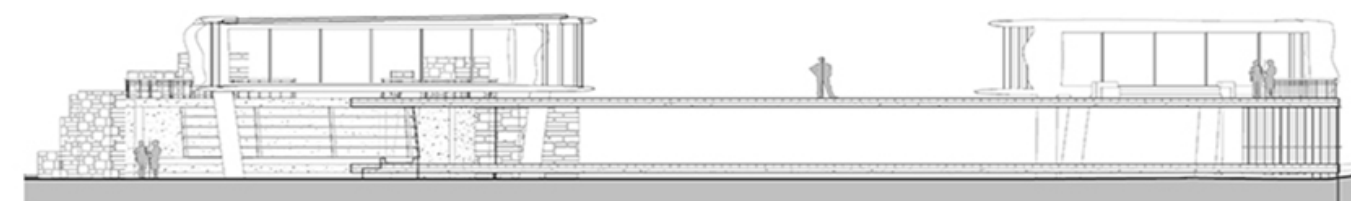
DOUBLE ENVELOPES, as described in this strategy, are multiple-leaf wall assemblies used in the transparent or largely transparent portions of building facade. They range, in configurations, from the glass facade. Double window to a recurring modernist ideal, the all-glass facade. Double envelopes consist of an outer facade, an intermediate space, and an inner facade. The outer leaf provides weather protection and a first line of acoustic isolation. Though the use of open slots and operable elements in the glass planes it is possible to ventilate the interstitial space on warm days and admit partially



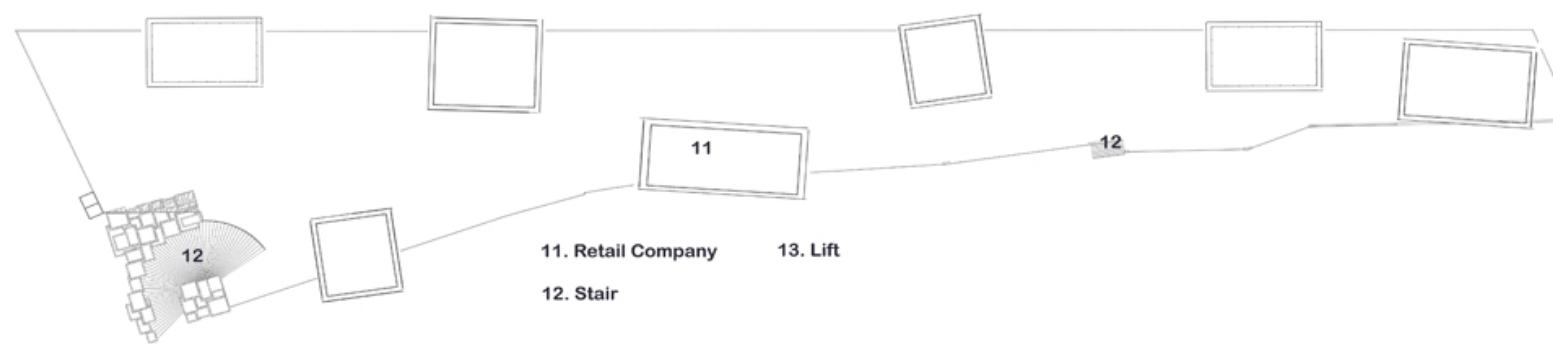
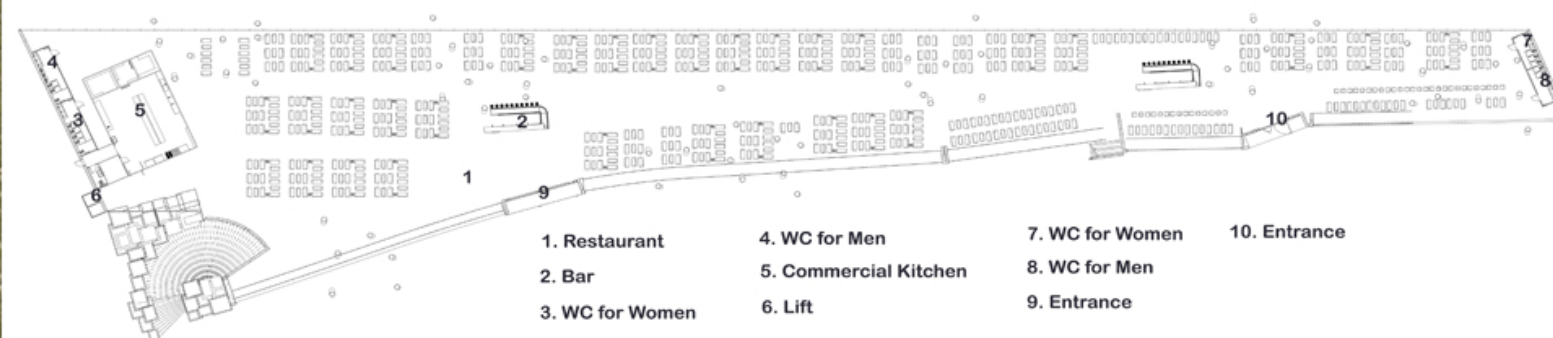
1. Outlet/Outtake Vent: The outlet can be open to allow air movement into the cavity or closed to trap air in the cavity.
2. Exterior Glazing: The second glazing layer on the exterior side of the facade. Distance from the first facade depends on the performance requirements for the cavity space between facades.
3. Cavity Space: The cavity can be open to allow air movement to cool the building or can be closed to trap air in the cavity space to provide thermal and acoustic insulation.
4. Inlet/Intake Vent: The inlet can be open to allow air movement into cavity or closed to trap air in the cavity.
5. Interior Glazing layer: The first glazing layer on the interior side of the facade. Glazing may be operable to allow air movement into the interior.



elevation

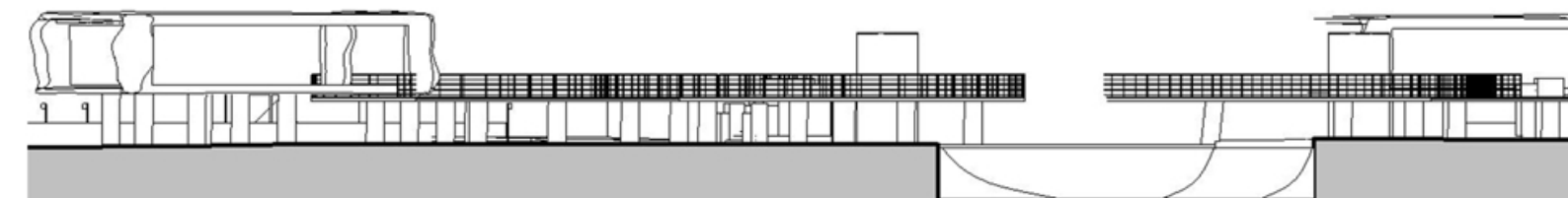


section





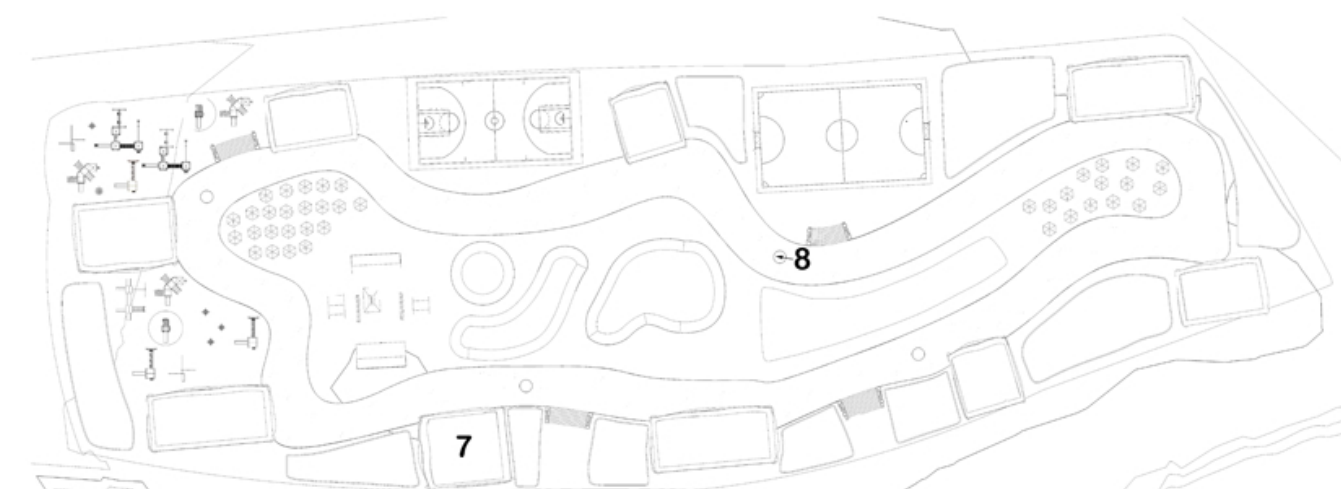
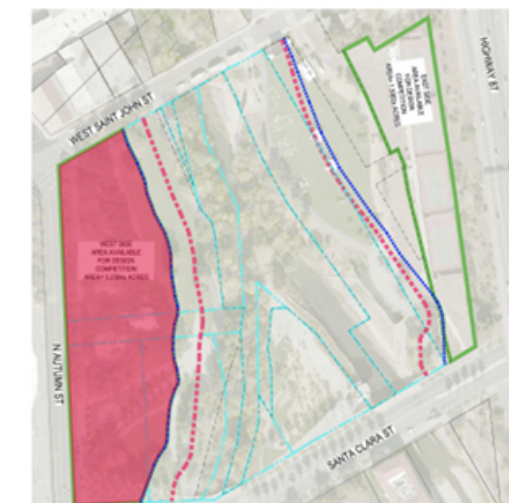
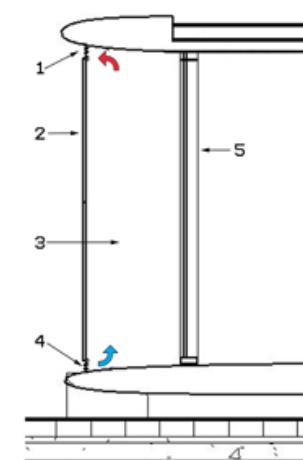
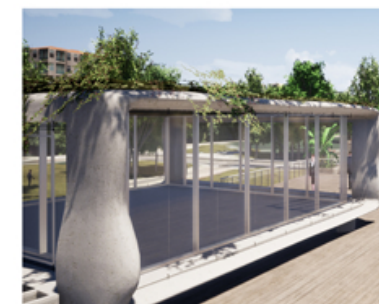
elevation



section

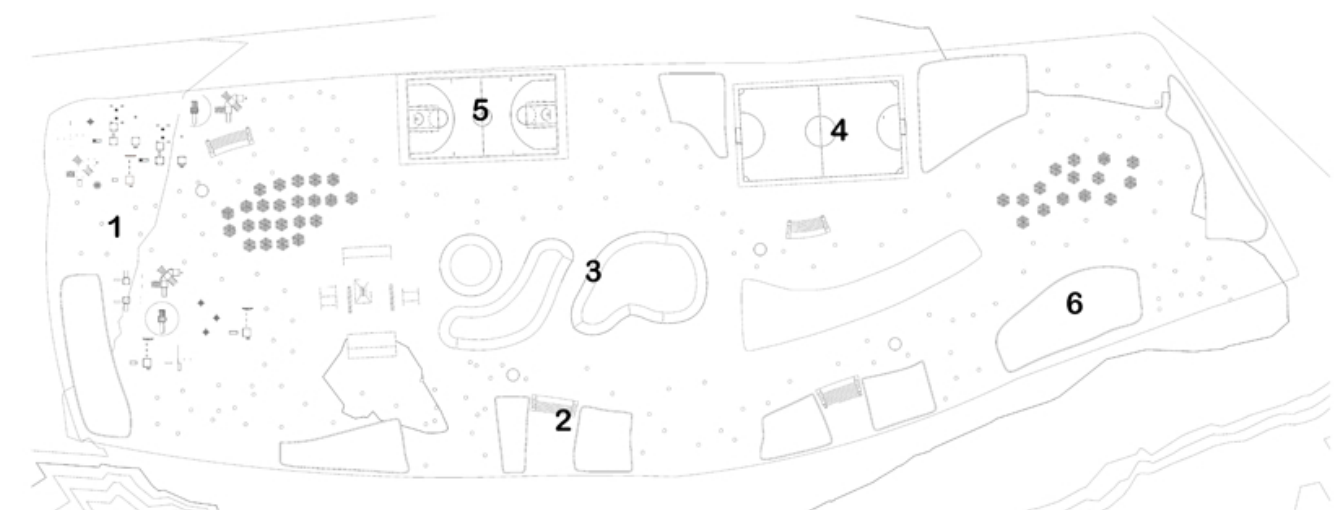
DOUBLE ENVELOPES, as described in this strategy, are multi-leaf wall assemblies used in the transparent or largely transparent portions of building facade. They range, in configurations, from the glass facade. Double window to a recurring modernist ideal, the all-glass facade. Double envelopes consist of an outer facade, an intermediate space, and an inner facade. The outer leaf provides weather protection and a first line of acoustic isolation. Though the use of open slots and operable elements in the glass planes it is possible to ventilate the interstitial space on warm days and admit partially

1. Outlet/Duttake Vent: The outlet can be open to allow air movement into the cavity or closed to trap air in the cavity.
2. Exterior Glazing: The second glazing layer on the exterior side of the facade. Distance from the first facade depends on the performance requirements for the cavity space between facades.
3. Cavity Space: The cavity can be open to allow air movement to cool the building or can be closed to trap air in the cavity space to provide thermal and acoustic insulation.
4. Inlet/Intake Vent: The inlet can be open to allow air movement into cavity or closed to trap air in the cavity.
5. Interior Glazing layer: The first glazing layer on the interior side of the facade. Glazing may be operable to allow air movement into the interior.



7. Retail company

8. Lift



1. Playground
2. Stairs
3. Skaters

4. Football Pitch
5. Basketball pitch
6. Pond

