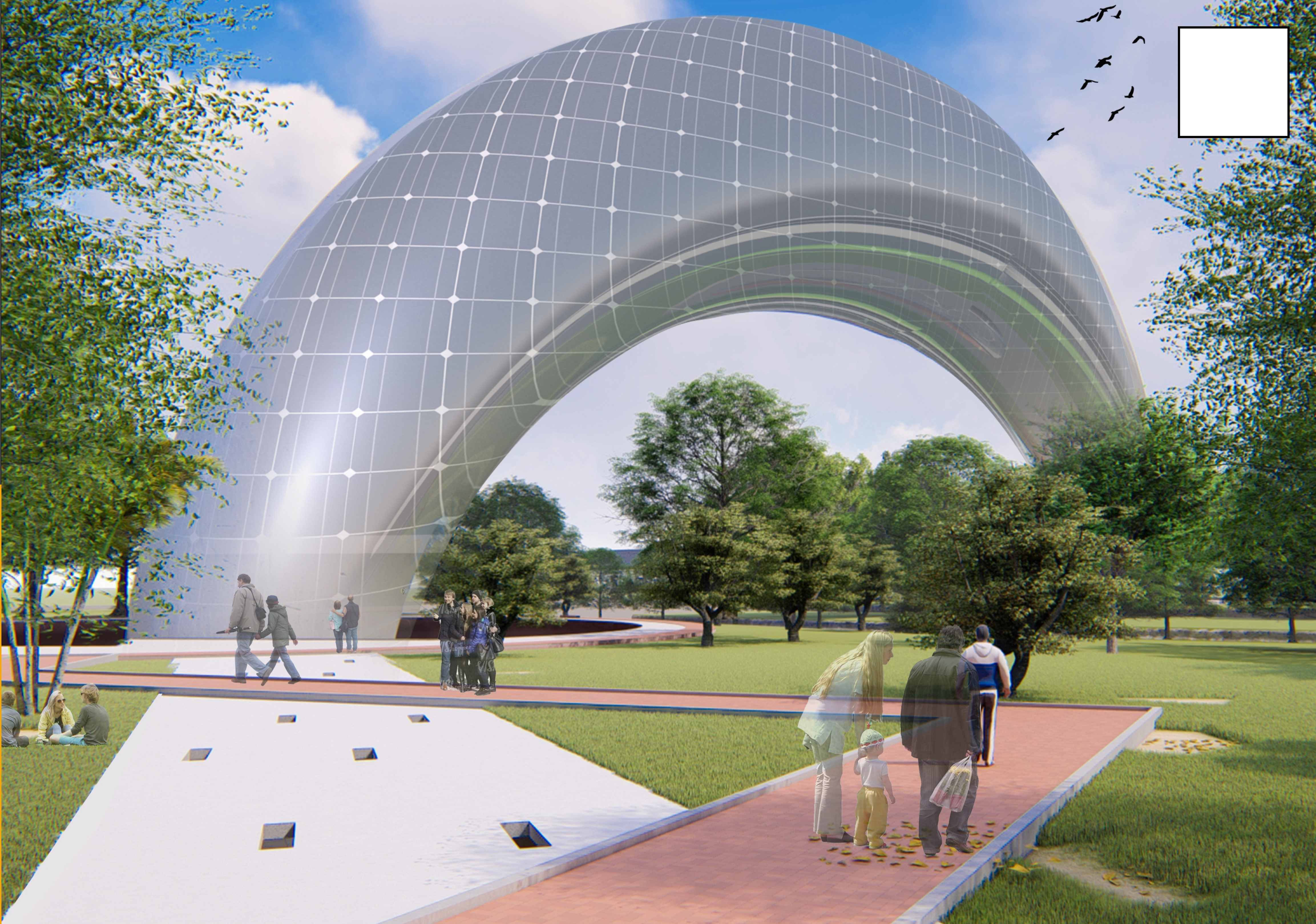
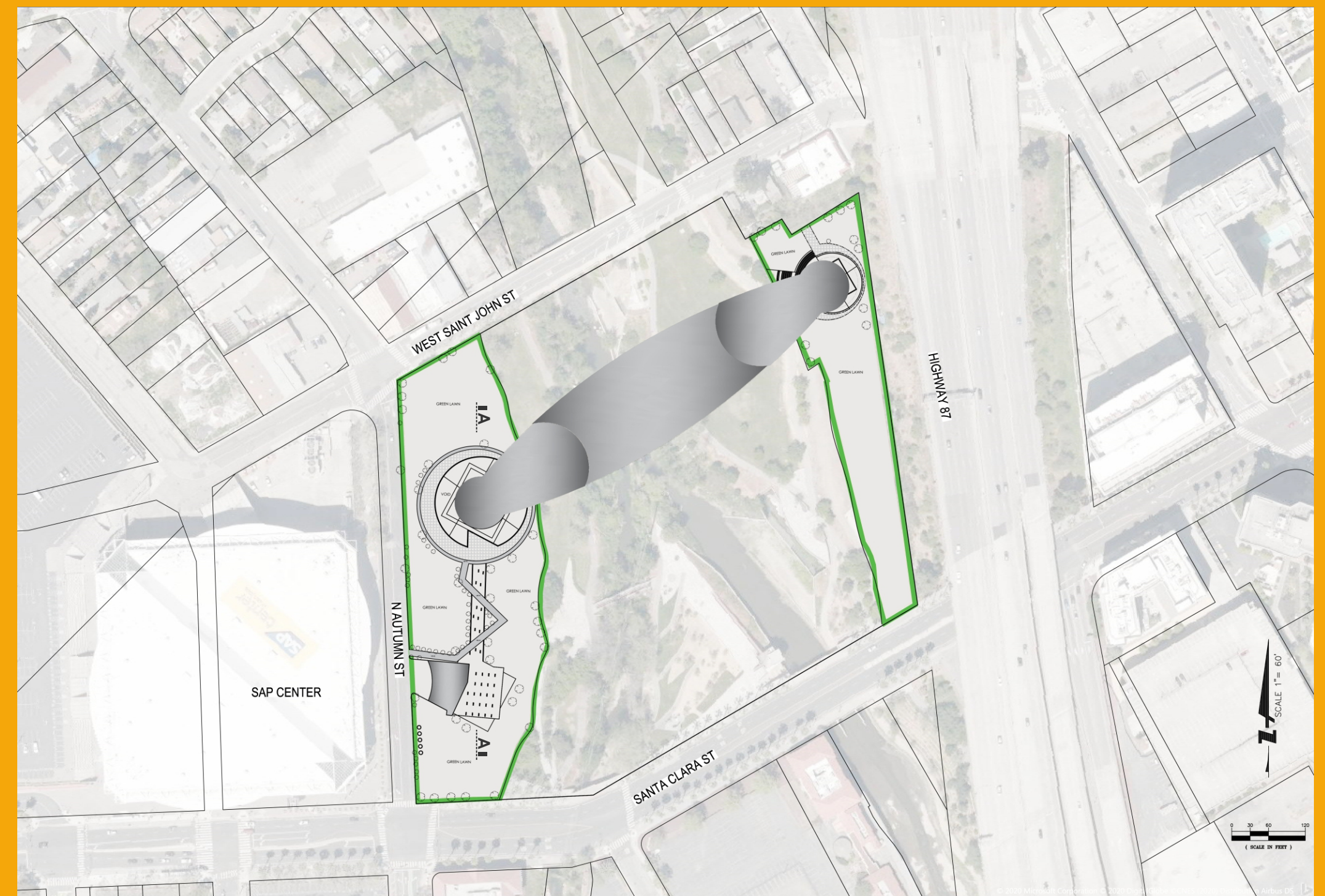
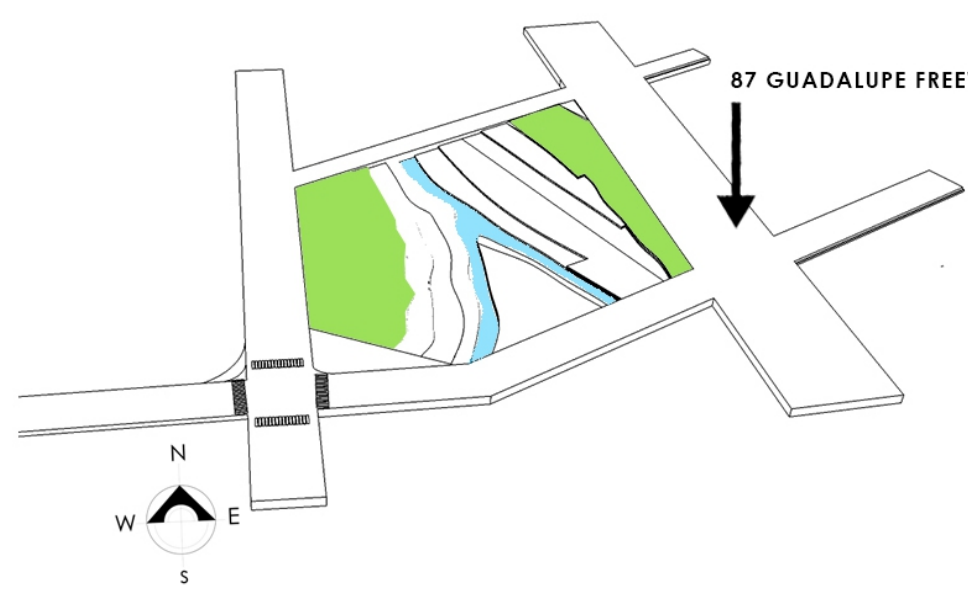


EXPEDITION IN TIME

A major site force Guadalupe river flows through the site. Our dominant design element, the bridge is placed across the river, connecting the other side. It metaphorically connects the past, present and future of “Silicon Valley”. Just like the river flows through the site, the timeline flows through the bridge. We call it “Expedition in Time”. A tour with an augmented reality will give us the experience of true “Silicon Valley”. We believe it is crucial for the visitors to learn about the glorious past, phenomenal present and the unknown yet incredible future of “Silicon Valley”.

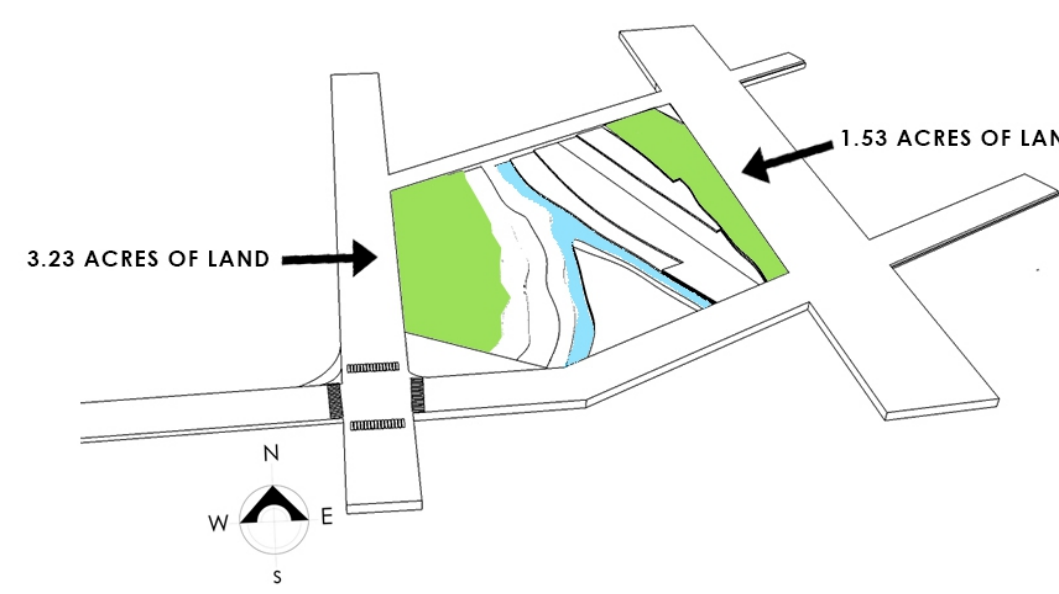


PROJECT STORYBOARD



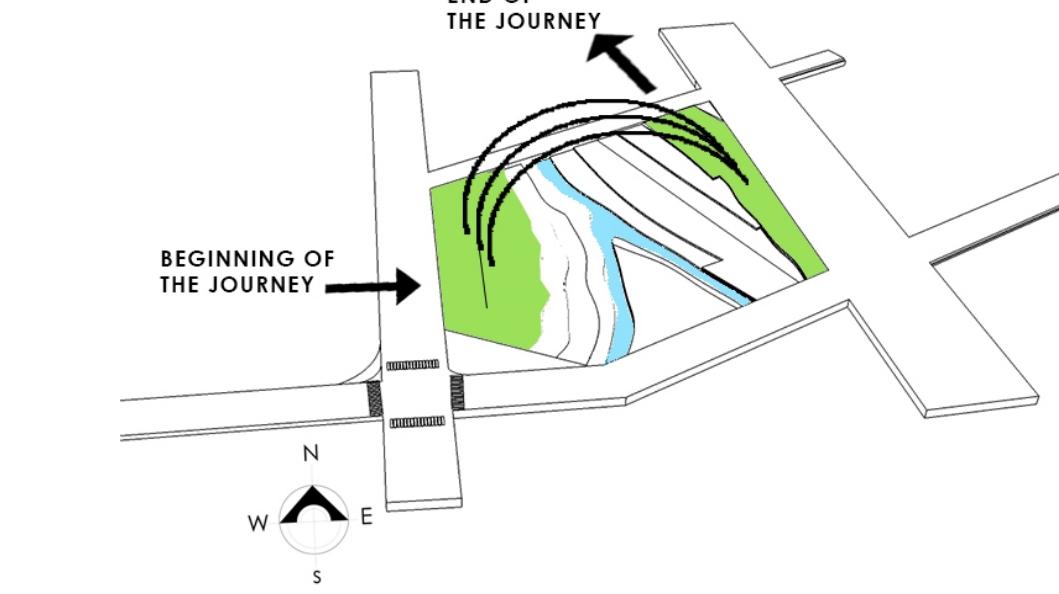
01. The Site

There are accessible vehicular roads all around the given site, except the 87 Guadalupe Freeway, which is elevated and thus inaccessible from the site. The Guadalupe River and Los Gatos Creek split through the green area.



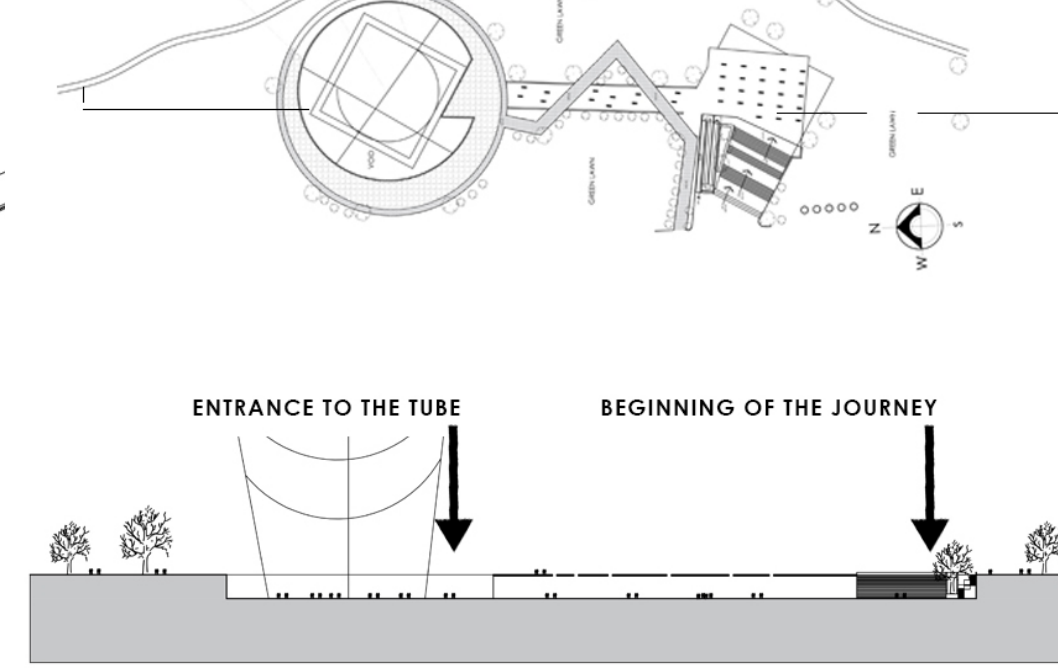
02. Available Area for the Landmark

The available area for the iconic landmark / structure is split between two chunks of land within the site.



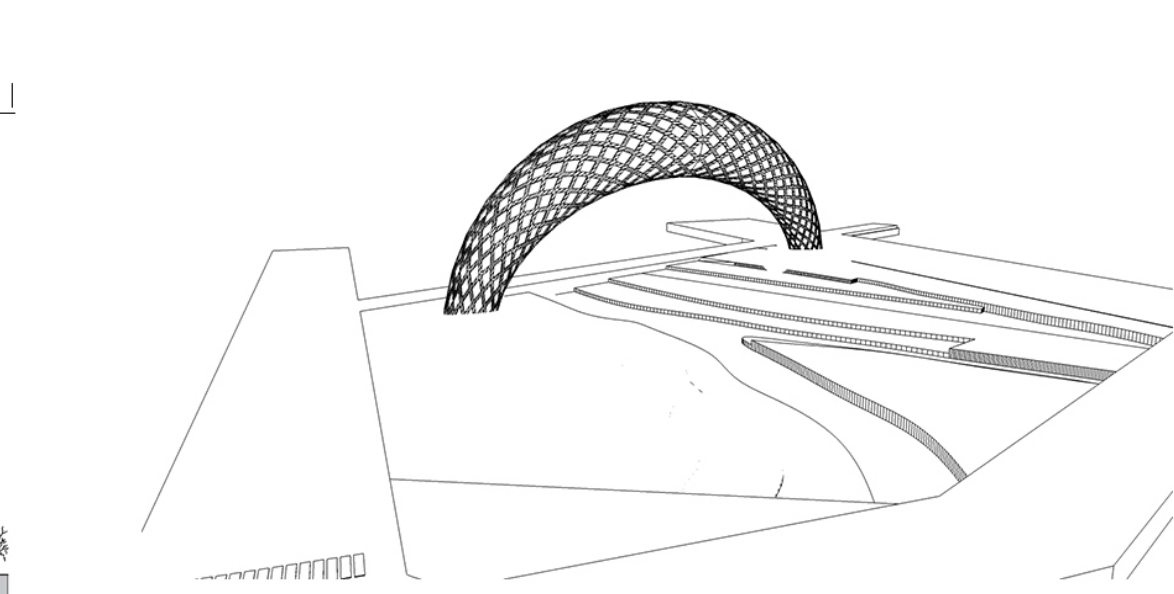
03. The Connection

The primary idea was to make a connection between the chunks, which may symbolize the journey of “Silicon Valley” throughout the time.



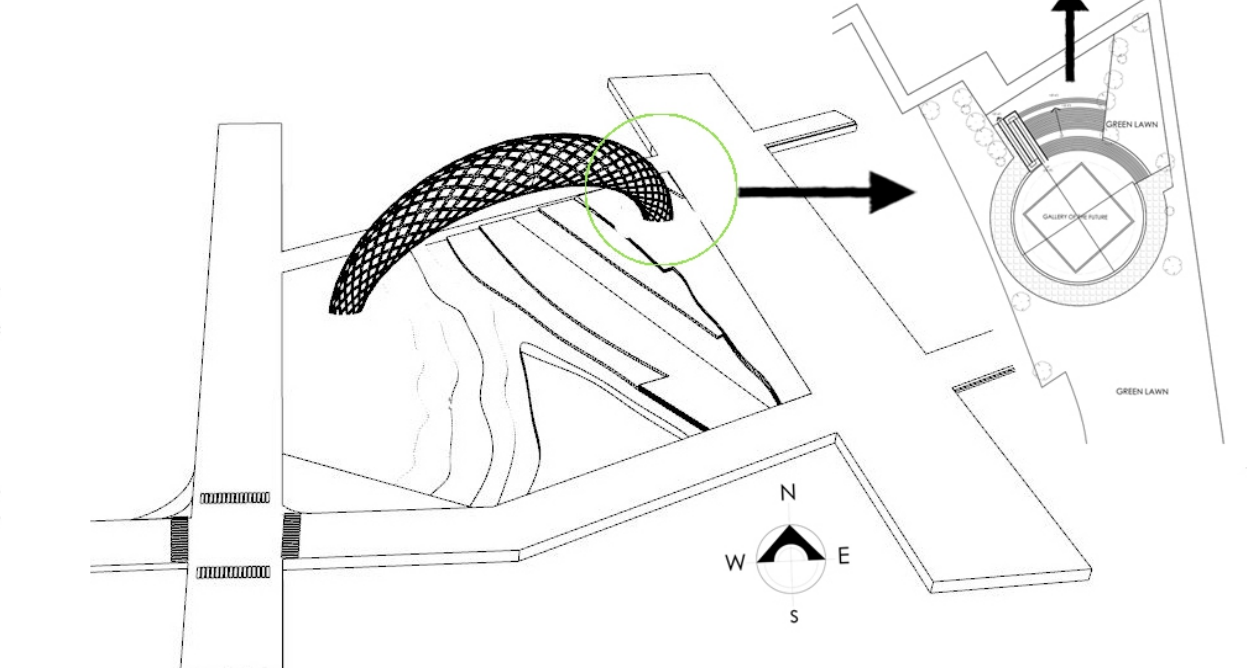
04. The Beginning

The journey starts with the sunken platform. The observer experiences the past of “Silicon Valley”.



05. The Tube

Then the observer is taken to the tube. It connects the other side with a 600 feet long & 150 feet tall iconic structure. The first half consists of groundbreaking innovations of “Silicon Valley” from the recent decades.



06. The Future

The other half of the tube gives the observer an experience of foreseeable future of “Silicon Valley” and beyond!

Strong Visual Presence



Creates a strong aura in the atmosphere

Environmental Hazard



No intrusive element was introduced that may harm the environment

Building Components



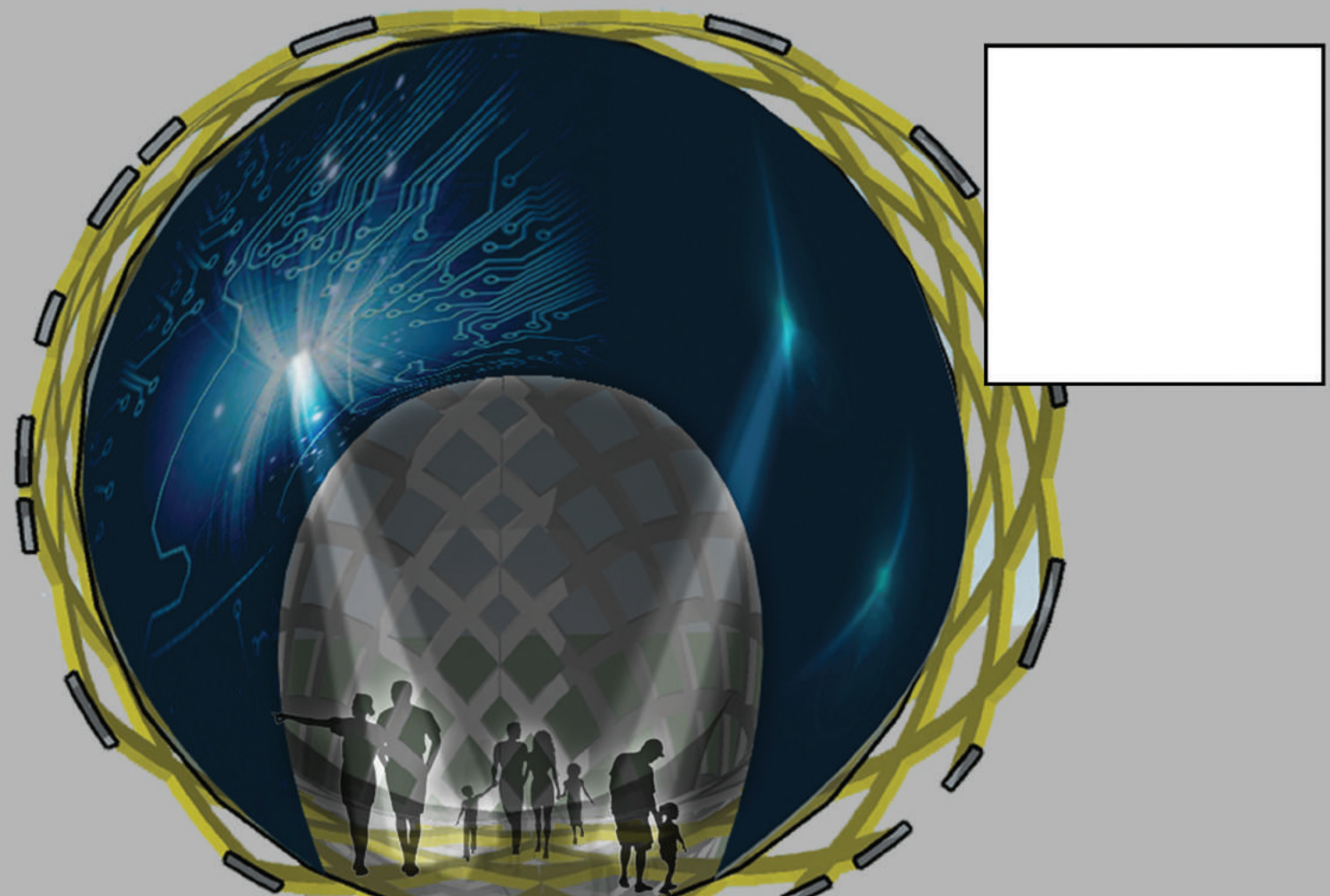
Lower crust of the tube is featured with touch sensitive consoles and interactive lighting.



Center crust is a monolithic structure made of steel trusses that spans an impressive length of over 600 feet.



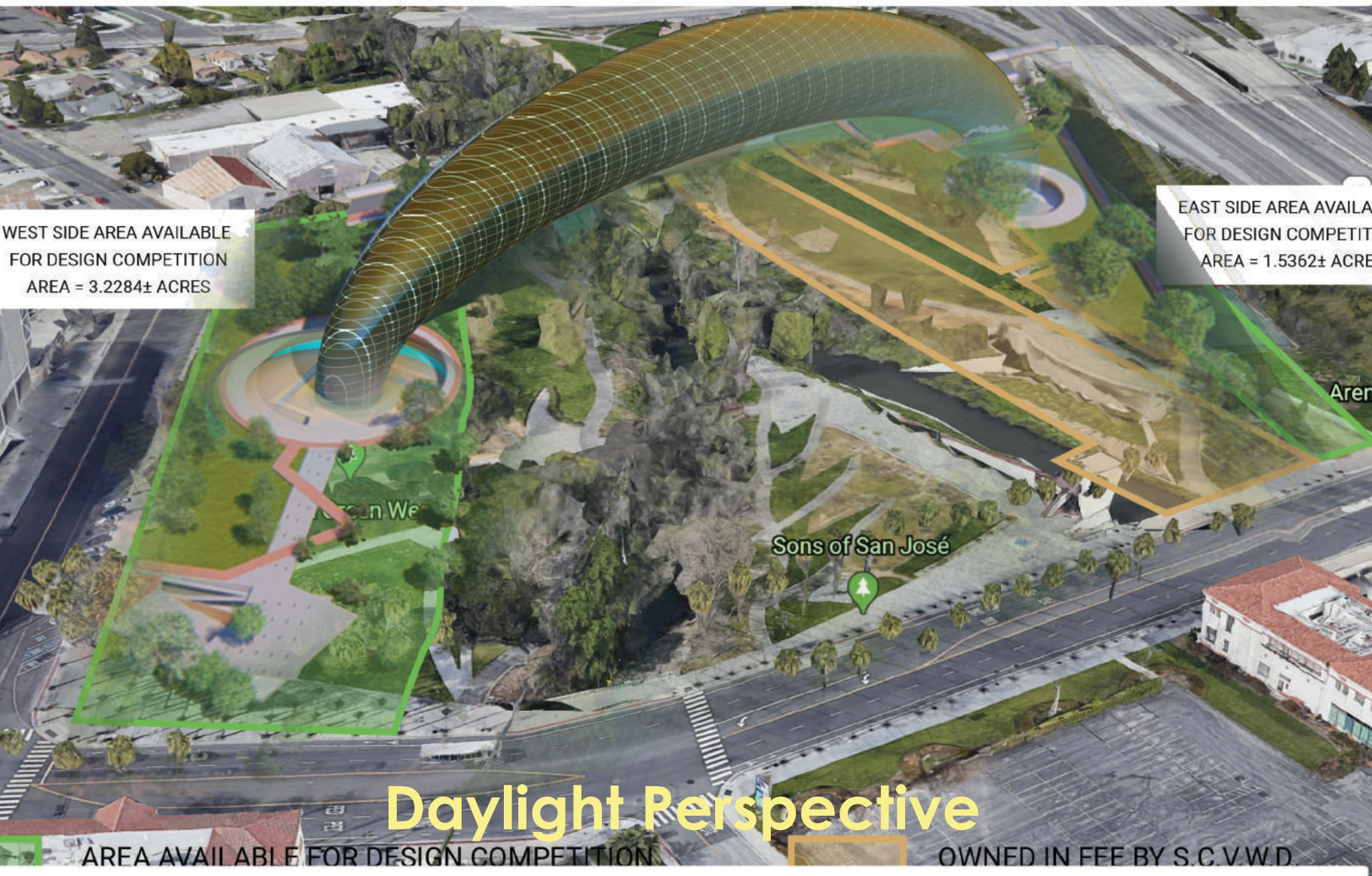
The entire outer crust of the tube is covered up with c-Si [Crystalline Silicon] solar panels and state of the art brilliant lighting.



Sectional Perspective



Overcast perspective



Daylight Perspective

Reduced Carbon Footprint



Of the site used for construction

Use of Renewable Energy



Generates its entire power from solar panels

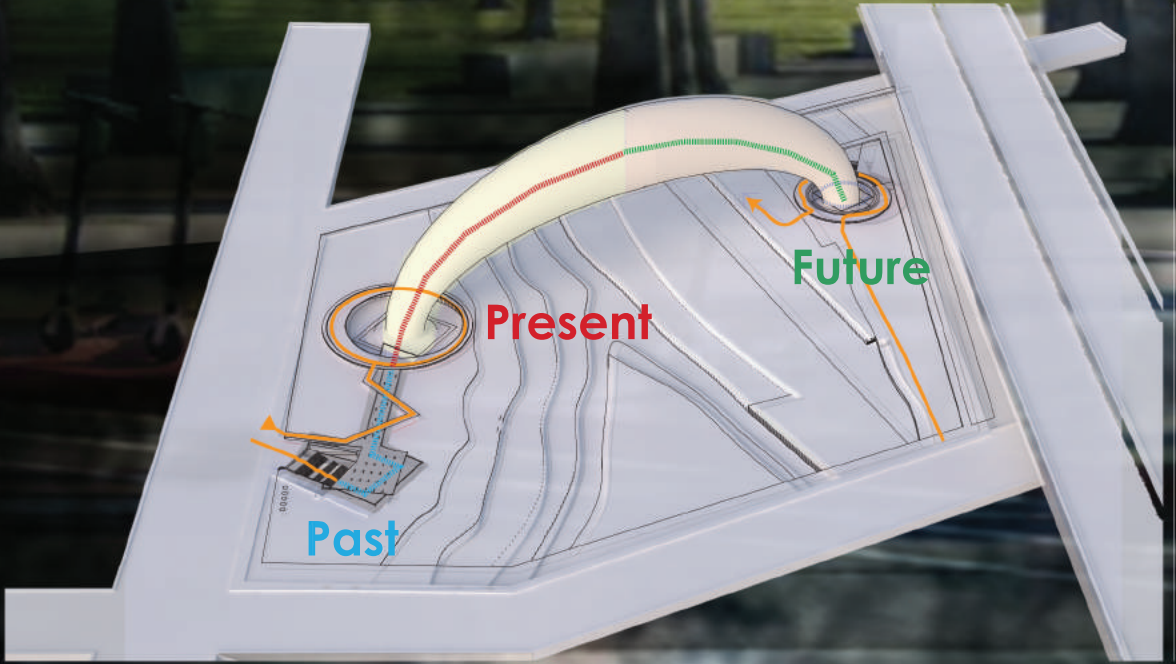
Effortless Maintainance



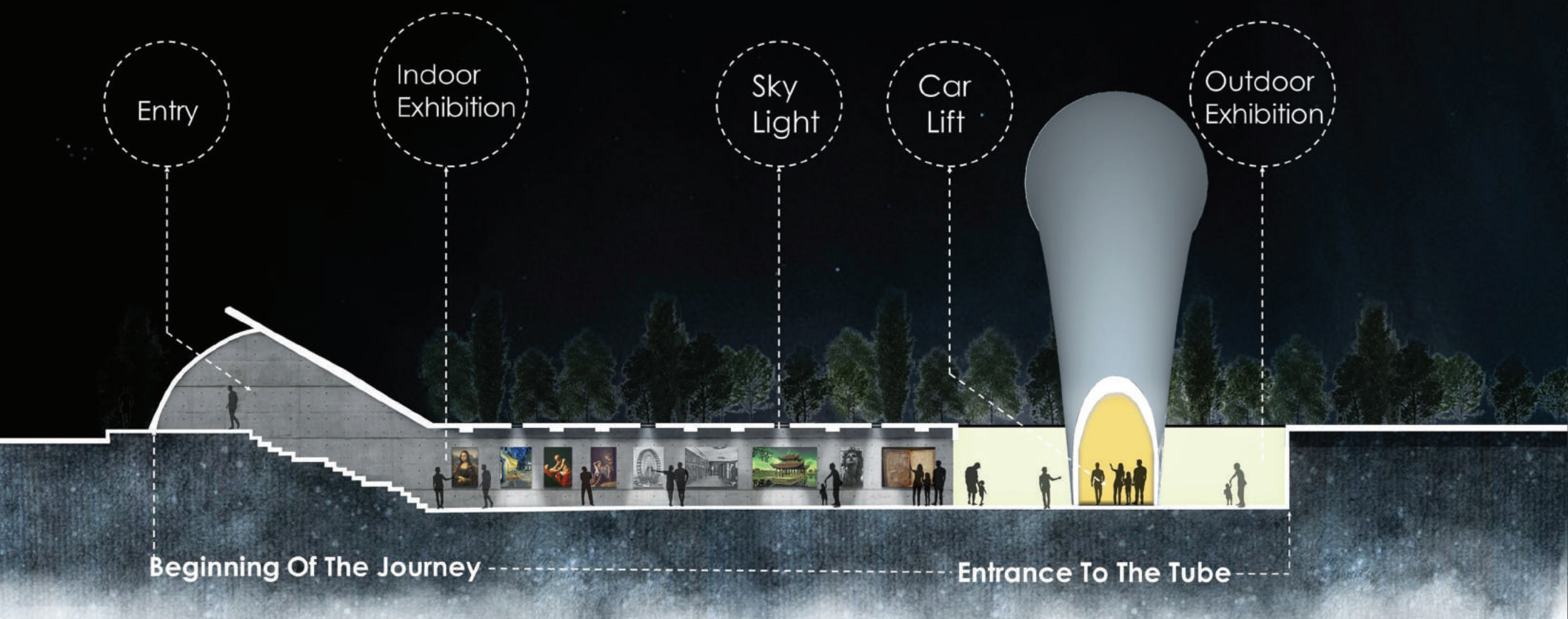
Radial shape and smooth surface

Net Zero Design Features

Circulation



Section AA



Entrance to the Journey



Walkthrough of the Past



Unlit at night

