

KNOW THY ROOTS

SUMMARY

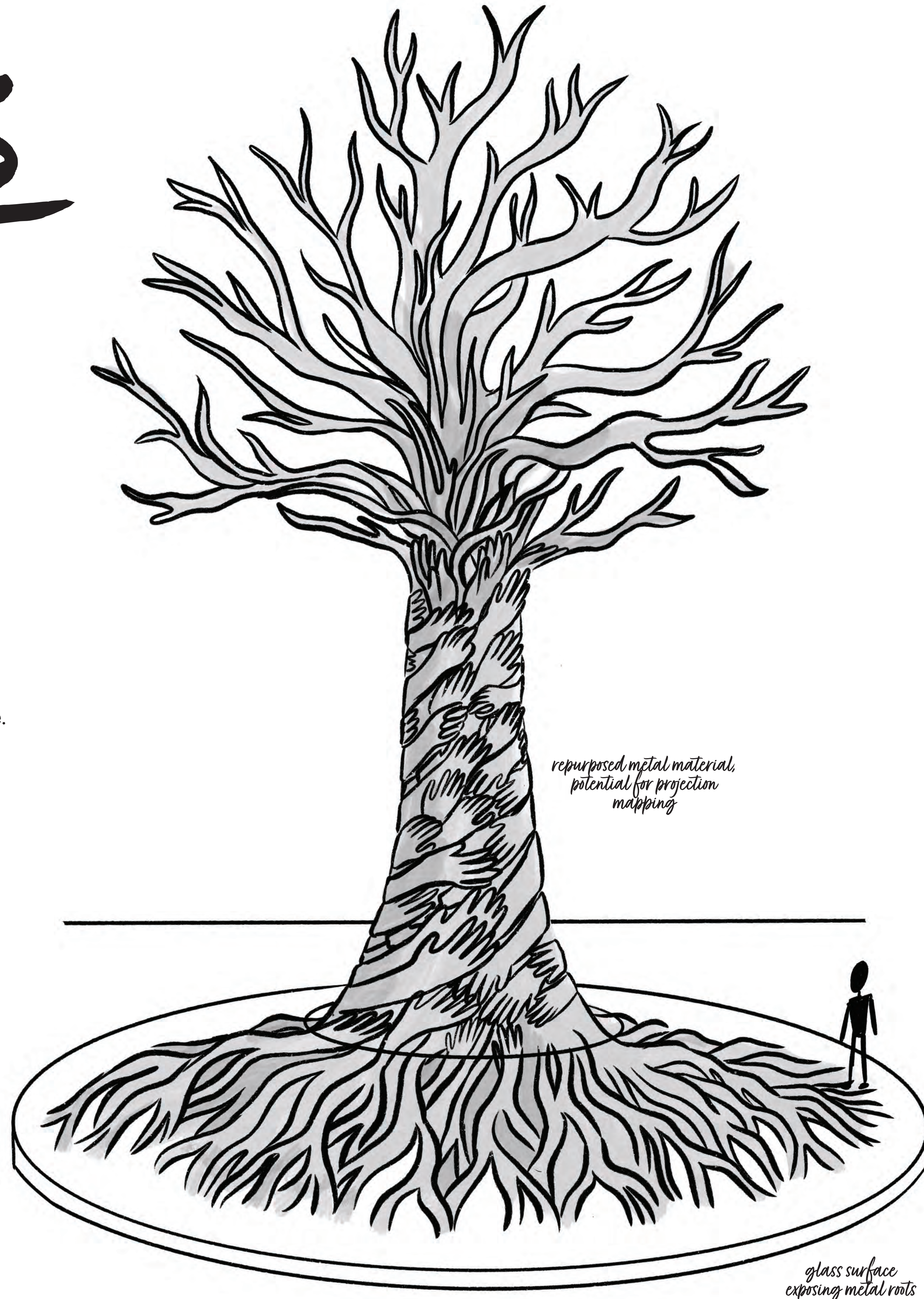
We are thrilled to propose a landmark that honors the many hands that have cultivated San José land: the Ohlone people, farm workers, visionaries, and today's everyday civilians. In conjunction with an amphitheater and cultural center that provides affordable housing, this concept aims to preserve San José's history while simultaneously planting seeds for future generations.

Unlike any other landmark, this concept celebrates San José's true history while actively giving back to the community. It is designed with San José's past, present, and future in mind, and is guaranteed to leave a lasting impact for visitors and residents alike.

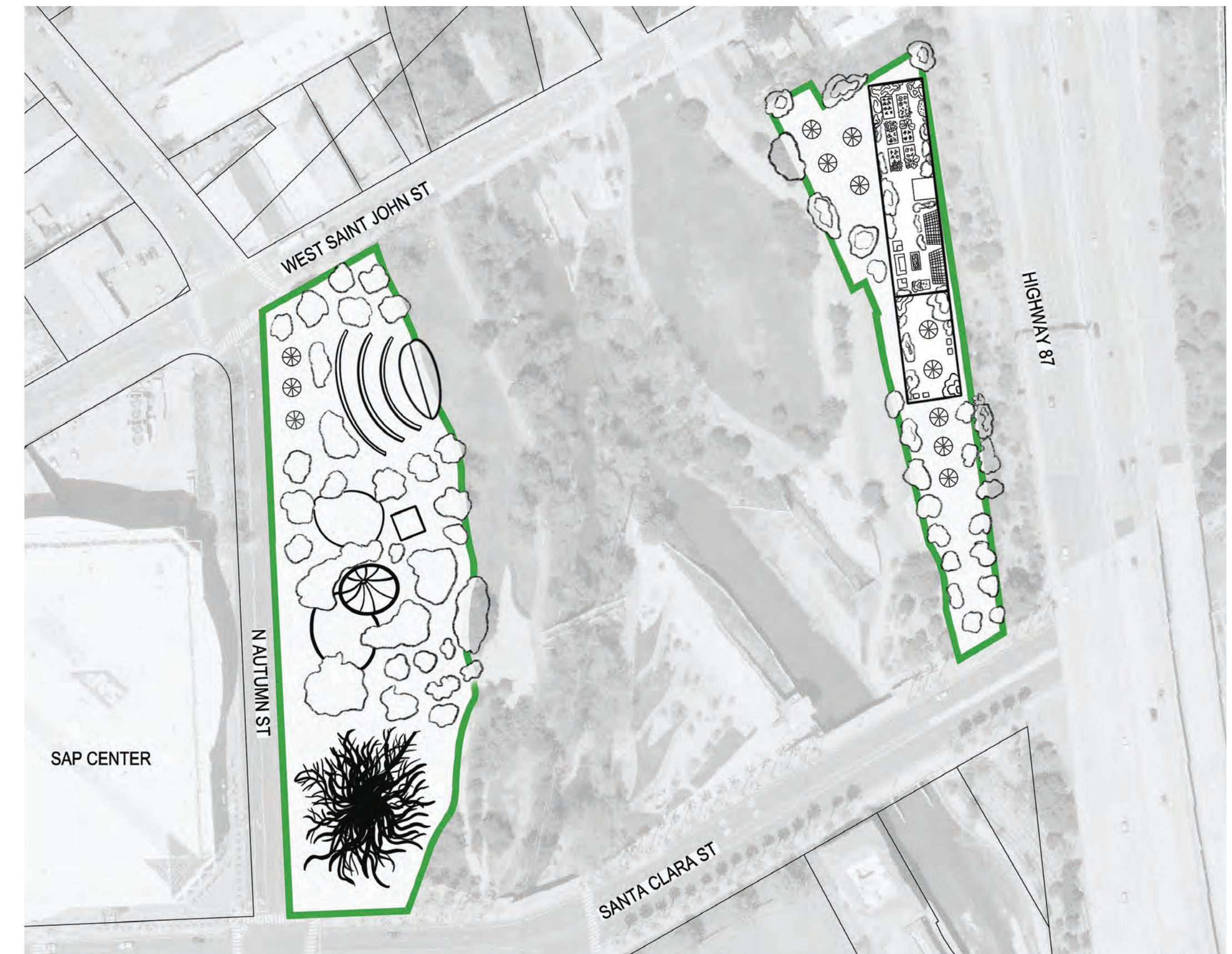
THE LANDMARK

RECOGNIZING WHERE WE CAME FROM AND WHERE WE WILL GO

Sculpted metal hands and arms intricately interlock, merge, and diverge to form the trunk of a tree-like monument that towers over the SAP Center. These hands represent the innovative Ohlone people who founded this land, the farm workers who cultivated "The Valley of Heart's Delight", and the engineers, pioneers, and visionaries who continue to define what we know to be Silicon Valley today. It was from hands that San José was created, and it is with human touch and human-driven innovation that we will continue to thrive.



SITE MAP

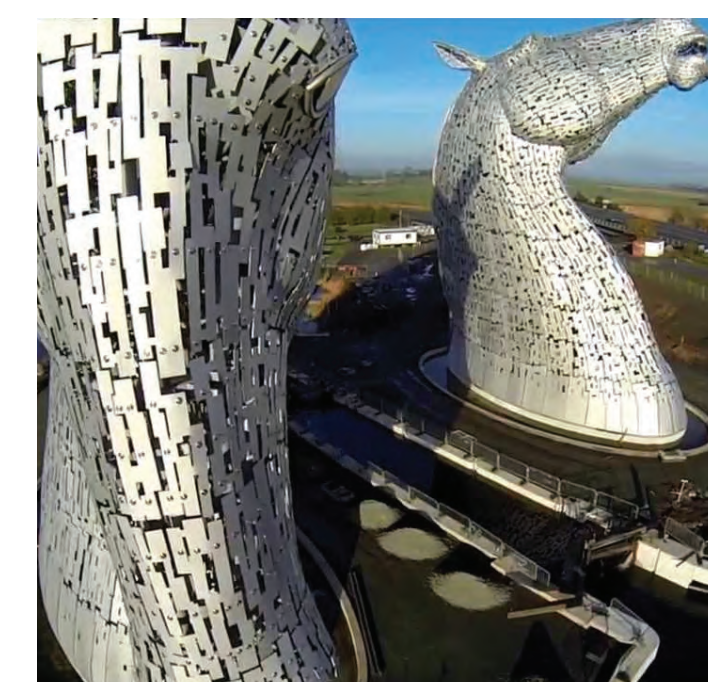


There are three major community engagement sites: a landmark and an amphitheater on the West End, and a cultural center that also provides affordable housing on the East End.

STYLE REFERENCES



"Source" by Jaume Plensa, Montreal



"Kelpies" by Andy Scott, Scotland

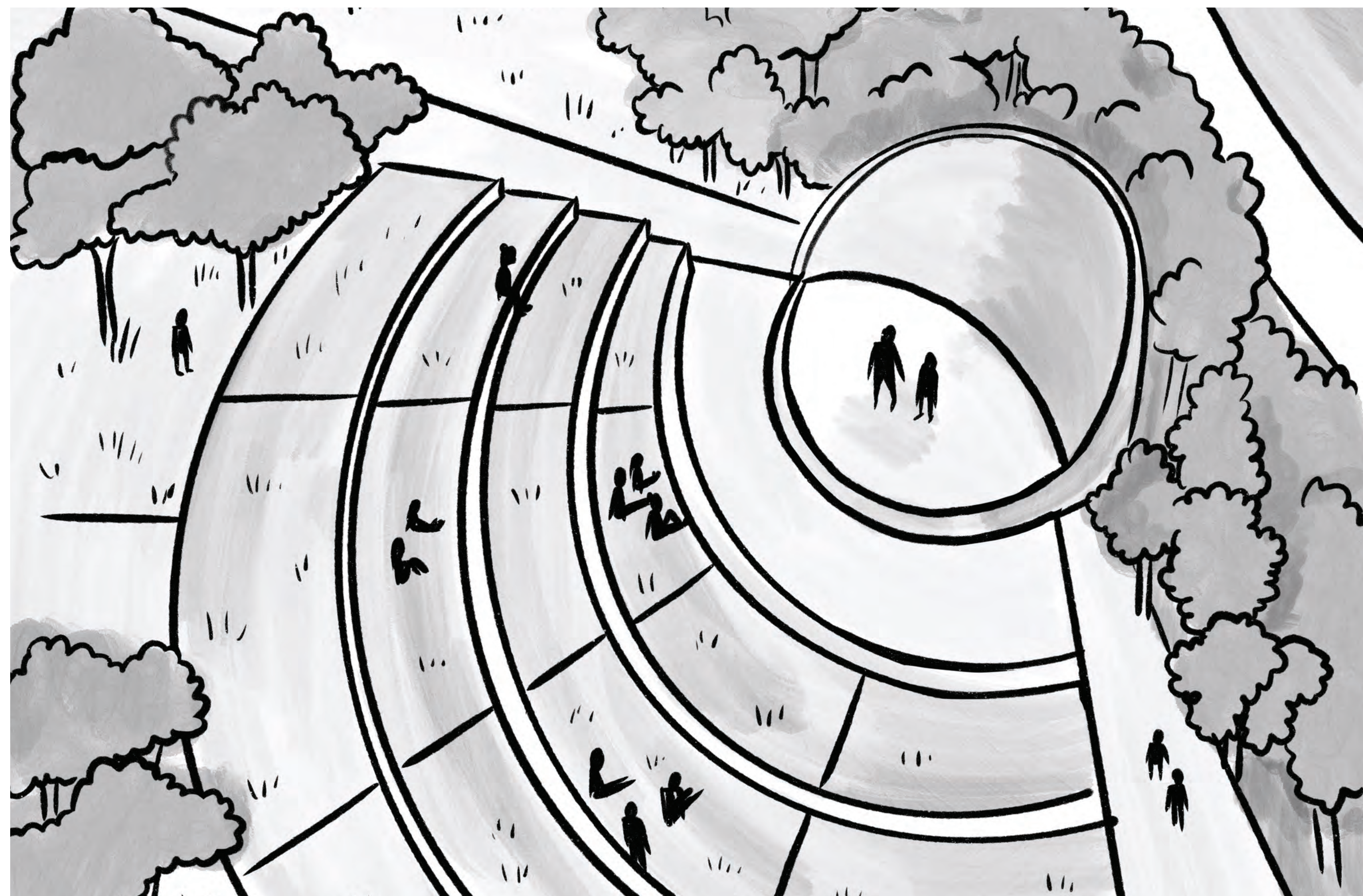


"Thoughts" by Jaume Plensa, Montreal

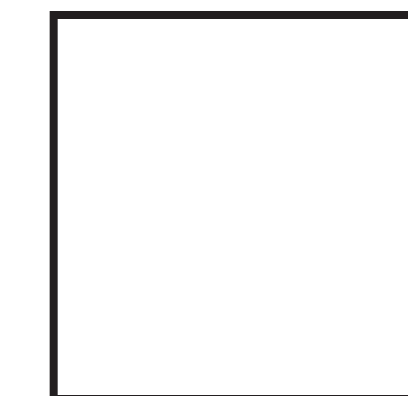
THE AMPHITHEATER

PRIORITIZING COMMUNITY, CULTURE, AND COMMUNICATION

In addition to the tree landmark, we are proposing an outdoor amphitheater in the heart of Downtown San José. This public gathering space will allow communities to tell stories, perform, and build a sense of connection – all of which San José was founded on (and still needs today).



THE CULTURAL CENTER AND AFFORDABLE HOUSING



CREATING AN EPICENTER FOR GROUNDING, GROWTH, AND ENDLESS POTENTIAL

This building will serve multiple purposes: a café and educational space for public visitors, and affordable housing (with support services) for San José’s most vulnerable community members.

The **first floor** will feature a café to nourish public visitors. The café will primarily employ building residents, comparable to the Delancey Street Foundation in San Francisco. There will also be a cultural center/gallery dedicated to acknowledging Ohlone land and the history of San José.

The **second floor** will have resource rooms that residents and public guests can reserve. These include: meeting rooms, interview rooms, and accessible computers and printers.

Third floor and above will be affordable housing for San José community members who most need it, similar to PATH Ventures’ Villas on the Park.

Lastly, on the **rooftop**, we envision a community garden exclusive to the residents of the building to combat the lack of grocery stores and fresh produce in the Downtown area. In an effort to be net-zero, this building will include solar panels on the roof.

Overall, the intent is to create economic opportunities and sustenance for this building’s residents, to ensure their futures have as many opportunities as the majority of San Joseans.

