



THE PERFECT BALANCE

San José, California

THE PERFECT BALANCE

The Perfect Balance is a living monument that moves in reaction to human presence, i.e. based on the number and distribution of people walking on it. Designed as a circular walkway, it connects visitors to Guadalupe River Park whilst providing areas for community activation.

Shifts in weight resulting from human movement on the walkway gently tilt the central circular structure, opening and closing the supporting giant kinetic arms to the sky in a quiet and gradual manner. This way, the monument is perpetually in motion, symbolizing humanity's restless intent to innovate and discover.

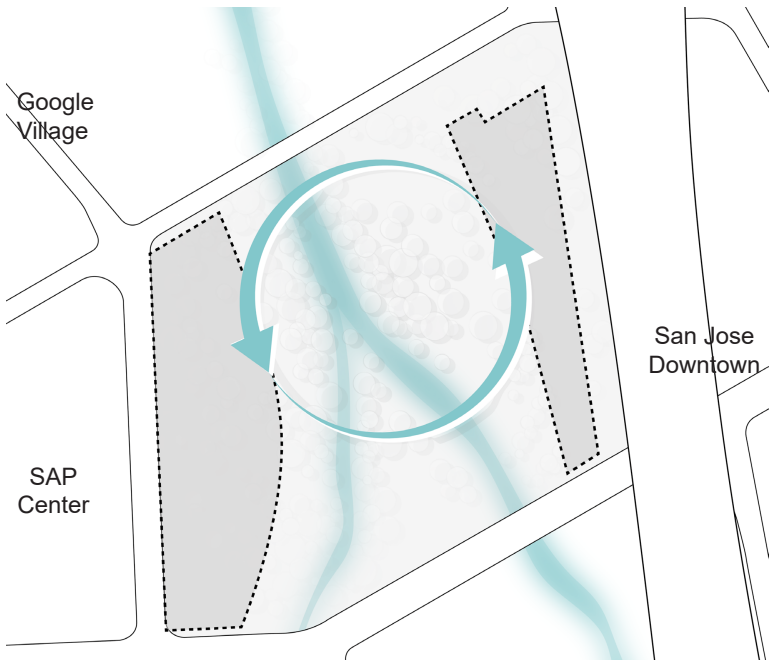
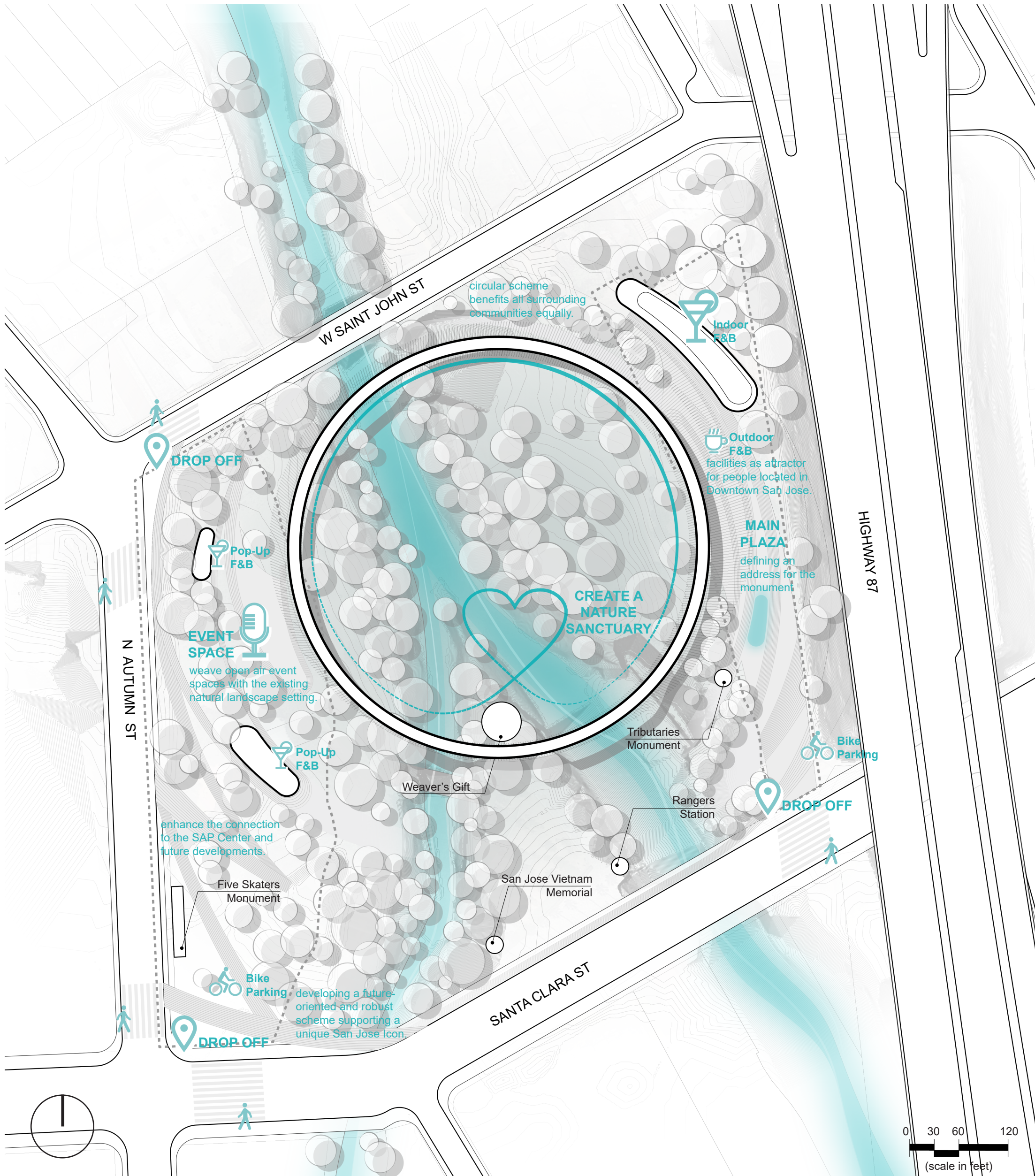
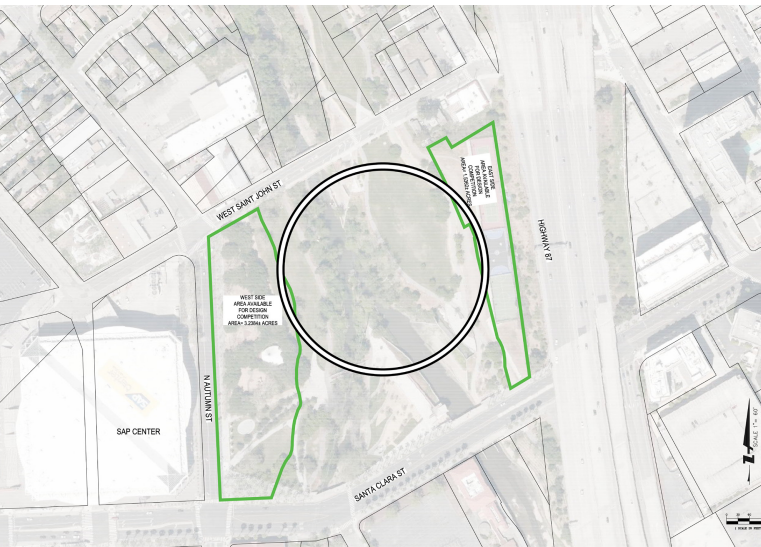
The kinetic motion is stored to generate the energy required for nighttime lighting - creating a feedback loop between day and night, people and power and resulting in a net-zero energy strategy.

Communal areas throughout provide space for public use, promenade, speeches, markets and festivals - forming a nucleus of communal affairs to encourage interconnectivity and embolden the local community on a global stage.

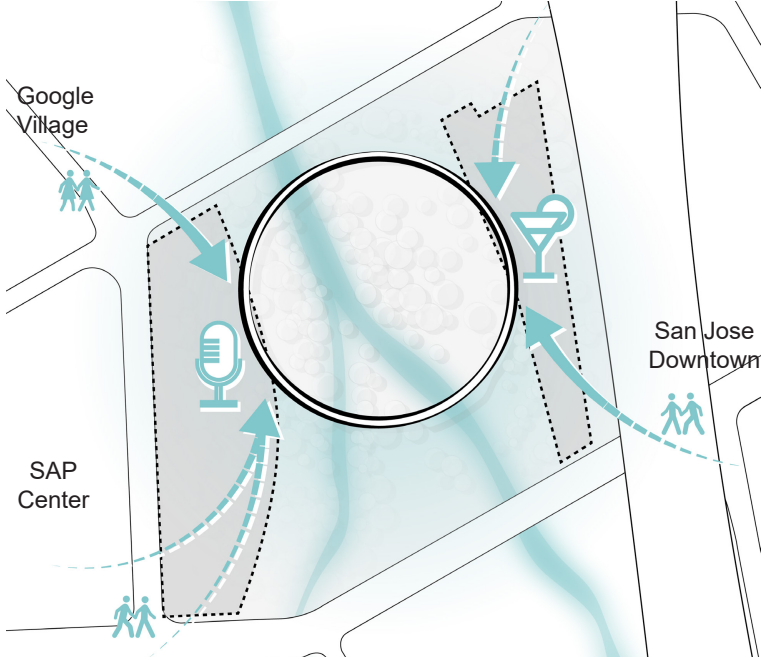
The Perfect Balance exemplifies how human architecture and technology can co-exist as part of the natural ecosystem. The sanctuary at the restored riverbanks of the Guadalupe is the root of this monument, where the circular walkway unifies the site and focuses the view into the treescape and surrounding green areas.

Silicon-based materials - glass and clay - will be used on the walkway, morphing with it to create a spectacular interplay of form, color, shadow, and light. Beautiful caustic patterns of nighttime lighting will contribute to the photosynthetic processes that feed the diverse ecosystem of the park.

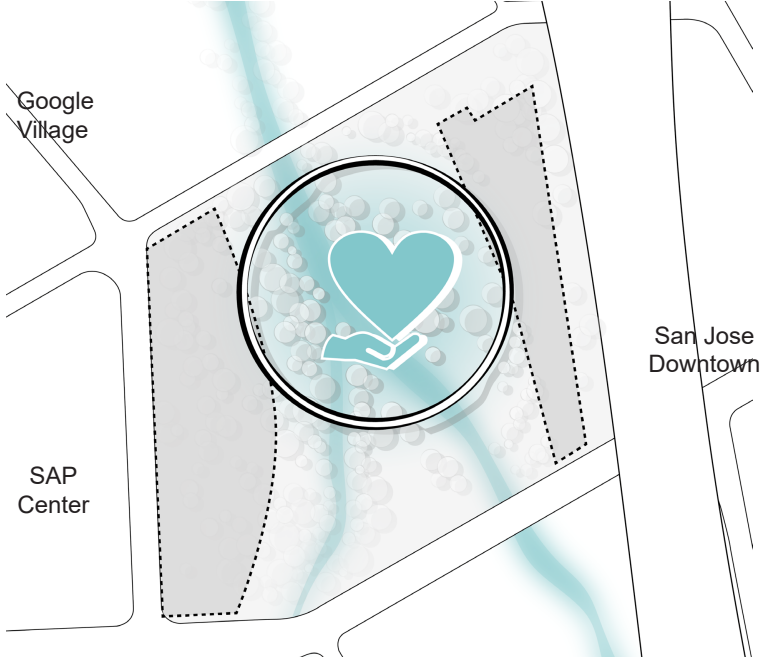
The Perfect Balance is a living monument that transforms with human interaction, based on its embedded intelligence. A monument without a definite form but rather one that enables endless configurations in the coexistence between humans and nature.



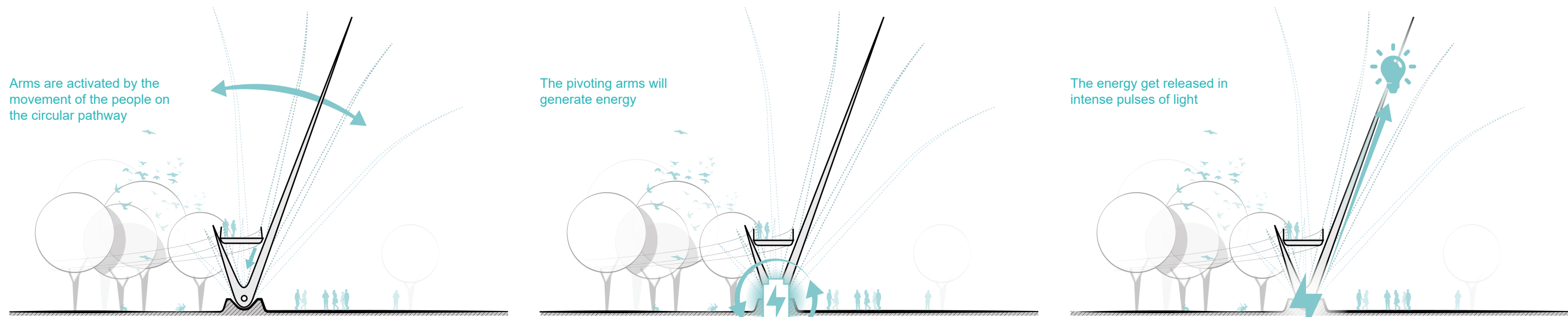
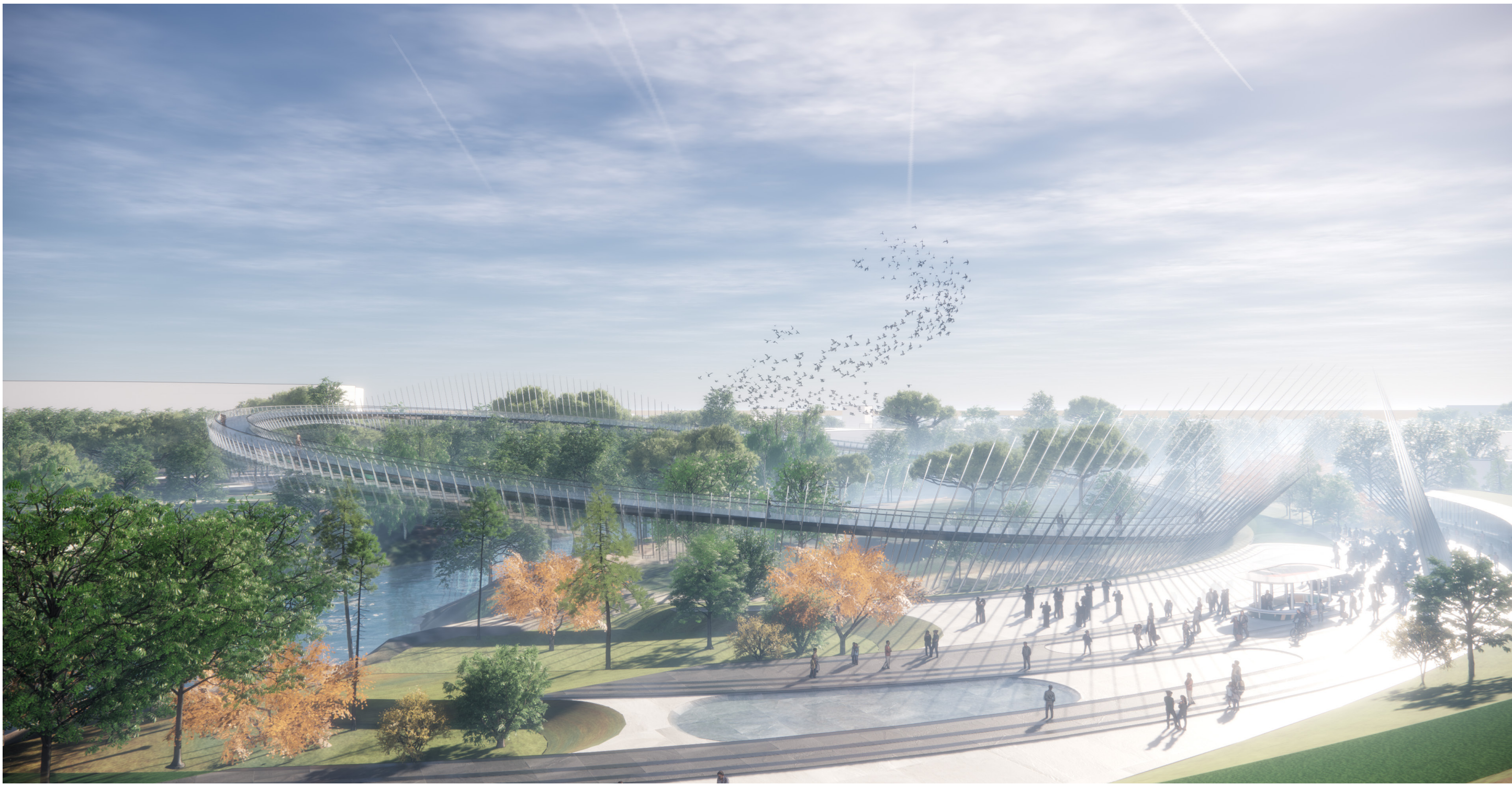
SITE CONNECTION
The monument is not only a symbol of a unified San Jose, but also a physical connection between the Downtown and the future developments, East of the park.



URBAN ACTIVATION
Satellite spaces anchor the monument. The E-Side is an open and flexible extension of the SAP Center while the W-Side is defined as the main Plaza with F&B facilities.



THE SANCTUARY
The ever-changing symbol of San Jose is not only a mirror of the Silicon Valley culture but also shows an interest towards protecting the nature within its Sanctuary.



MECHANICS: each component supporting the pathway has one pivoting point at its base. The constant gentle movement of the arms will give an ever-changing ghostly effect to the monument.

ENERGY: the pivoting movement of the arms would generate battery stored energy. This will allow the illumination scheme to be independent from the city grid.

LIGHT: the energy from the batteries will be released in short, intense but carefully choreographed bursts of light. They will not only be aesthetic, but also support the growth of the Sanctuary flora.

