

The Rainbow

A living symbol of diversity

The Rainbow is not just a symbol of fairness, progress and diversity, but also of the need to keep that flame alive. It intentionally needs our interaction for its survival. Giving it our power, gives it its power.



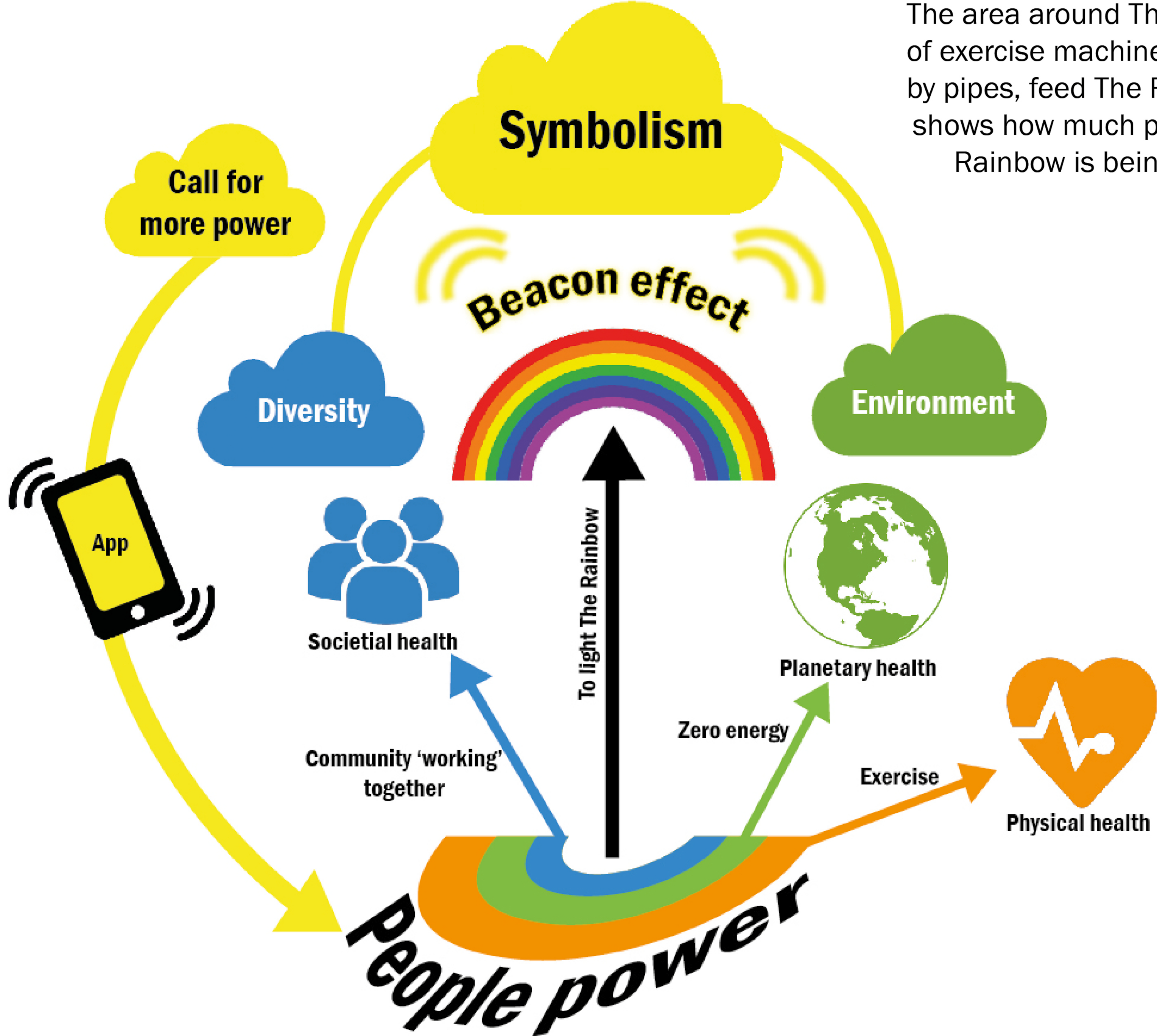
VISIBLE EVEN IN THE SUN



A BEACON THAT BURNS THROUGH THE NIGHT

Daily, it confirms that there is ‘no free lunch’ when it comes to the future because the future needs to be built each and every day. It is a symbol of what each of us is willing to do rather than just say – actions speak louder than words, and daily actions speak louder still. Moreover, when we power The Rainbow, it becomes a symbol to us of our own commitment and we become part of it.

THE RAINBOW’S ‘ECOSYSTEM’



The community and visitors come together in ‘crowd-powering’ for their own health and for the health of society, in a way that is also healthy for the environment. These personal, societal and planetary responsibilities are connected into a single purpose, a single monument and, importantly, a single activity.

At night, the flame of progress burns, telling us by the length of its arches how much power it has and how much it needs. Its battery intentionally holds a maximum of 24 hours of power so that it keeps calling us to replenish it. Especially at night, people across the city see that the community has indeed come together that day.

The area around The Rainbow is called the ‘DiverCity’. Rings of exercise machines of each color of the rainbow, connected by pipes, feed The Rainbow with our power. Every machine shows how much power we are generating together as The Rainbow is being topped up.

The Rainbow

On the other side of the park, people are working similar machines which connect to this collective grid to power the symbol of progress they see across the river.

The Rainbow is intentionally designed to operate as a sort of ‘moral ecosystem’. It acts as a beacon, calling people to support it with power and then shines light for diversity, fairness and sustainability, which in turn provides further motivation to give power. The cycle continues as people arrive to make the effort, and that effort becomes exercise for their own health, while the cooperation nourishes the health of society, and net-zero energy protects the health of the planet, all of which connect back to what it stands for, which motivates people to return.

