

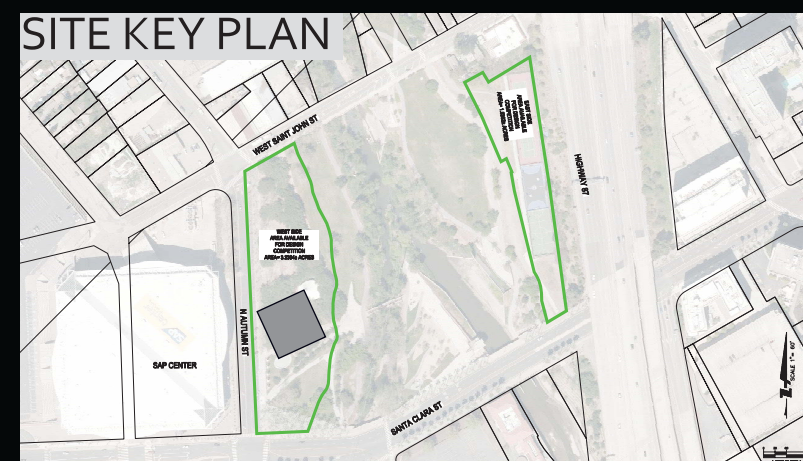
LIGHT OF INNOVATION

A place where yesterday meets tomorrow
creating a unified present



Union Pacific Replica Railroad and Willow Glen Trestle interactive model allows kids to get up close with a now missing historical local bridge while playing and climbing on a modern engine. Designed in reference to the wood structure originally built in 1921; it crossed Los Gatos Creek near Lonus Street connecting local canneries to international rail lines. The adjacent play yard, and picnic area activate this currently underused corner of the site while offering a learning opportunity for users at local rail continues to expand its connect this site with surrounding cities on new BART lines. Over the picnic area is the now raised tennis courts, also inspired by the Trestle design and made of material matching the new Tower to ties the overall site together.

- Orchard Open Field
- Orchard Picnic Area
- Tower Tots Play'n'climb
- Children's Carousel
- SAP Center
- Weavers Gift
- Five Skaters
- Sons of San Jose Memorial
- Java Grounds Plaza
- Los Gatos Creek Trail



PROJECT STATEMENT

The Light of Innovation is a sculpture of radiance, deftly merging modern and indigenous architectural concepts to present a story of innovation, freedom, and unity. It pulses with the energy of the valley's native and global community, who coalesce in harmony, stretching the limits of imagination, freedom, and innovation to improve the lives of others.

The Light of Innovation is distinguished by height, shape, and multi-colored glass, while remaining sympathetic to the natural landscape. Its silhouette complements Mount Umunhum and the Eiffel tower, and its diaphanous glass softens the structure's formidability, allowing light and one's gaze to pass through.

Rising from the banks of the Guadalupe River, the tower elicits a visceral response of awe. Yet there is a sacred peacefulness in its magnitude, complemented by a hushed landscape of native grass, flowers, and trees that whisper in conversation with the river's flowing waters.

Approaching the vast, open-air atrium, we regard its multi-level walkways and floors above, and are humbled by the heights we must transcend to earn the celestial gaze. With wide, winding staircases and wheelchair escalators, the tower invites all to ascend its ribbonsque spine.



State Route 87 winds through downtown San Jose and is almost entirely with the city with VTA light rail lines within it since 1993. It runs from SR 85 to the Mineta Airport and connects other major arterials along its Guadalupe Parkway. This section first completed in mid 1970's regularly carries over 170,000 vehicles daily past the Arena Green. The 200 foot height of the tower stands tall above the palm tree-line and other structures this side of the 87, drawing your attention to question whats happening there, creating a desire get off the raised motorway, back down to the ground level and experience it and its lush surroundings firsthand.

- St John Street Overlook Plaza
- Union Pacific Trestle Glen
- Pac'n'Play Picnics under
- Raised Tennis Courts
- Event Fields
- Santa Clara Street Overlook
- Basketball Courts
- Tributaries Monument
- Confluence Point
- Guadalupe River Trail
- Storm-water Control

Each floor narrows as we progress upwards, purposefully diminishing the personal space between visitors. We become aware of each other's presence, and the meaning is clear: the more we elevate ourselves, the more we close the distance between us and move toward a more perfect union. In contrast, our view of the world widens from on high, and it reminds us of our stewardship of our homeland.

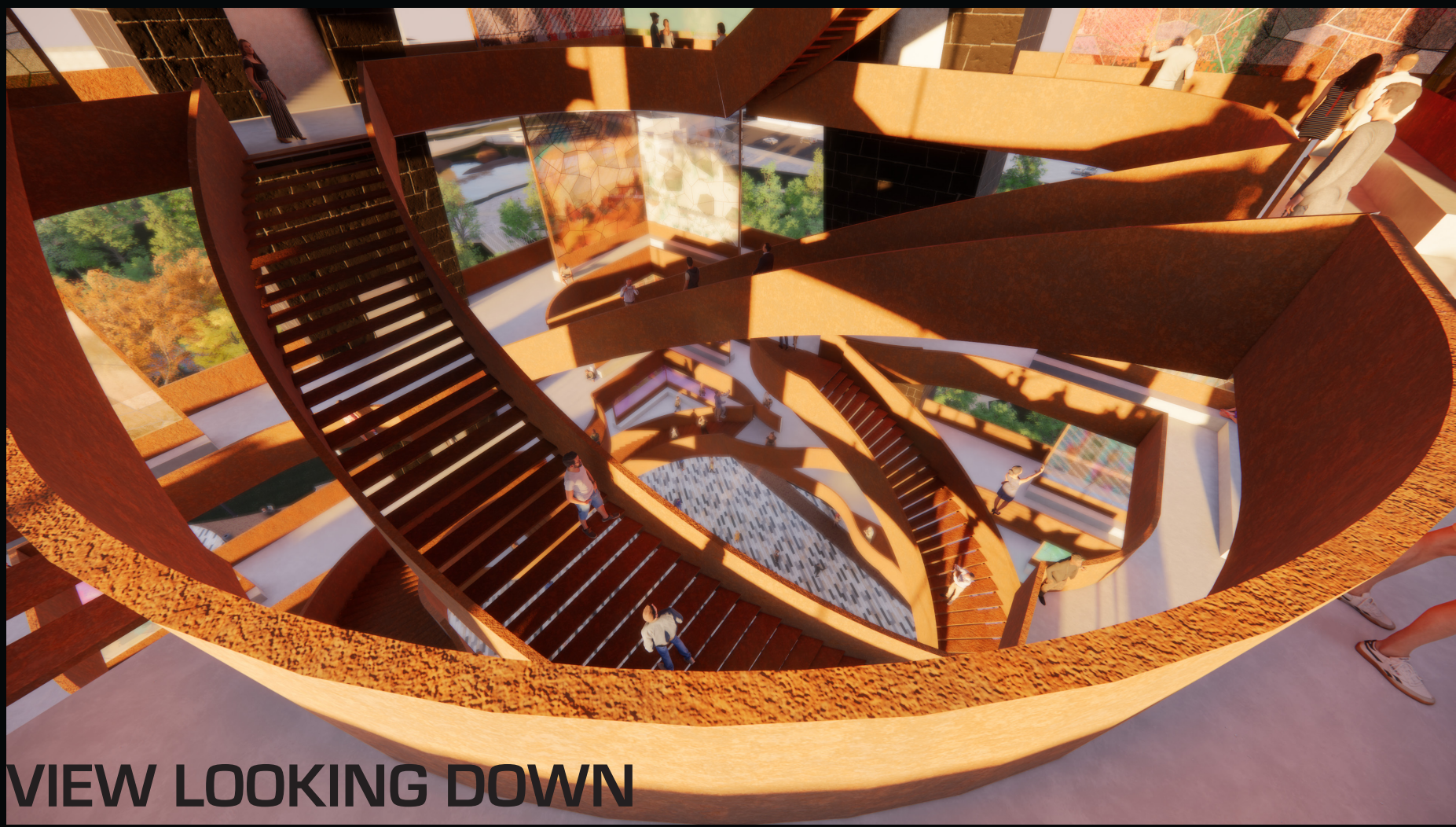
Viewing others below--now dwarfed by height and distance, transformed by colored glass--the tower invites transformation through self-reflection: What have I contributed to this valley? How have my daily actions helped others ascend behind me like those ascending these staircases?

We arrive at the tower's apex to discover that the weight of people walking in the beacon generates the electricity to light its torch. Thus, our efforts to ascend are awarded by epiphany: no matter who we are, or our place of origin, we arrive collectively to become the most critical component that lights the path toward freedom and innovation.

Ultimately, visitors experience the sculpture as a uniquely Santa Clara Valley story that places each person as a main character. We learn that the Light of Innovation is truly about aspiring to new heights as one community to help others on their own journeys toward freedom worldwide.



Visible from nearby historical neighborhood of Little Italy and Henry's Hi-Life the art glass cube observation decks and the public art on the floors below is a monument inserted into the skyline. Its modern materials coming together in a this familiar classic form naturally creates a gravity effect pulling the eyes from existing site lines through and around the park. This brings a larger number of users to come and experience the new active areas within while accentuating the many reflective monument and memorial spaces remaining in place.



VIEW LOOKING DOWN



VIEW LOOKING UP



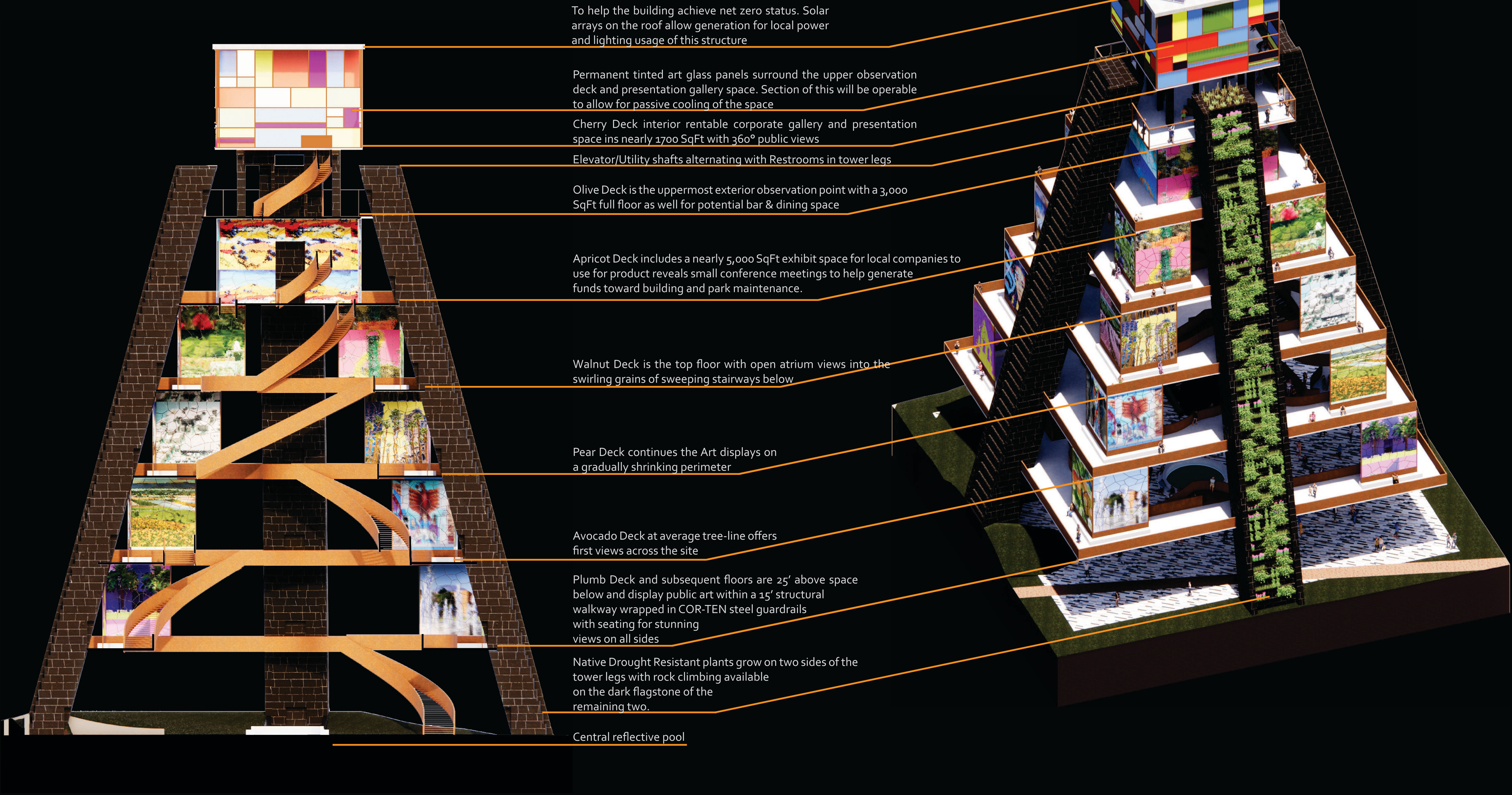
VIEW OF THE 5 SKATERS



Observation cube overlooking Guadalupe River, SAP Center, and downtown San Jose is wrapped in operable tinted glass for passive cooling while accenting Literally the Cherry on top of this monument.

SUMMARY:

Light of Innovation is a modern, crystalline sculpture that merges sleek lines and silhouettes with indigenous concepts. This soaring tower serves as an homage to innovation, and like France's gifted statue in New York Harbor, offers its brilliant ember to help Liberty cast her light of democracy from coast to coast. Nightly, the Light of Innovation's pulsing luminescence cuts through the vast darkness from a soaring height, guiding arriving travelers to safe harbor like a glowing beacon, and welcoming them with a promise of opportunity and an embrace of gratitude for the immeasurable contributions of creativity and innovation yet to come.



Black flagstone surface on rock climbing wall to be sport prepped for ropes as an interactive experience between the visitor and both the natural and built environment.

