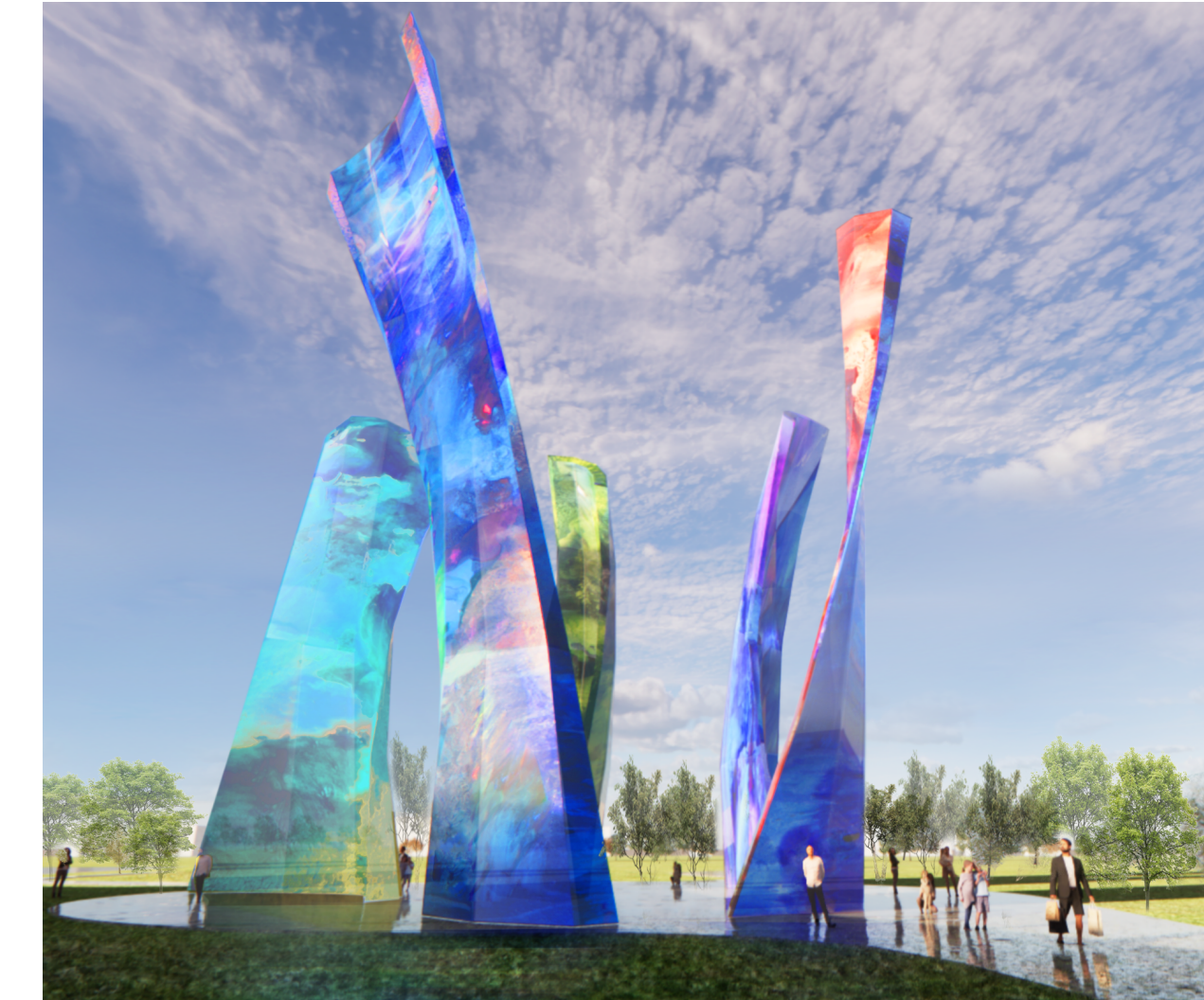


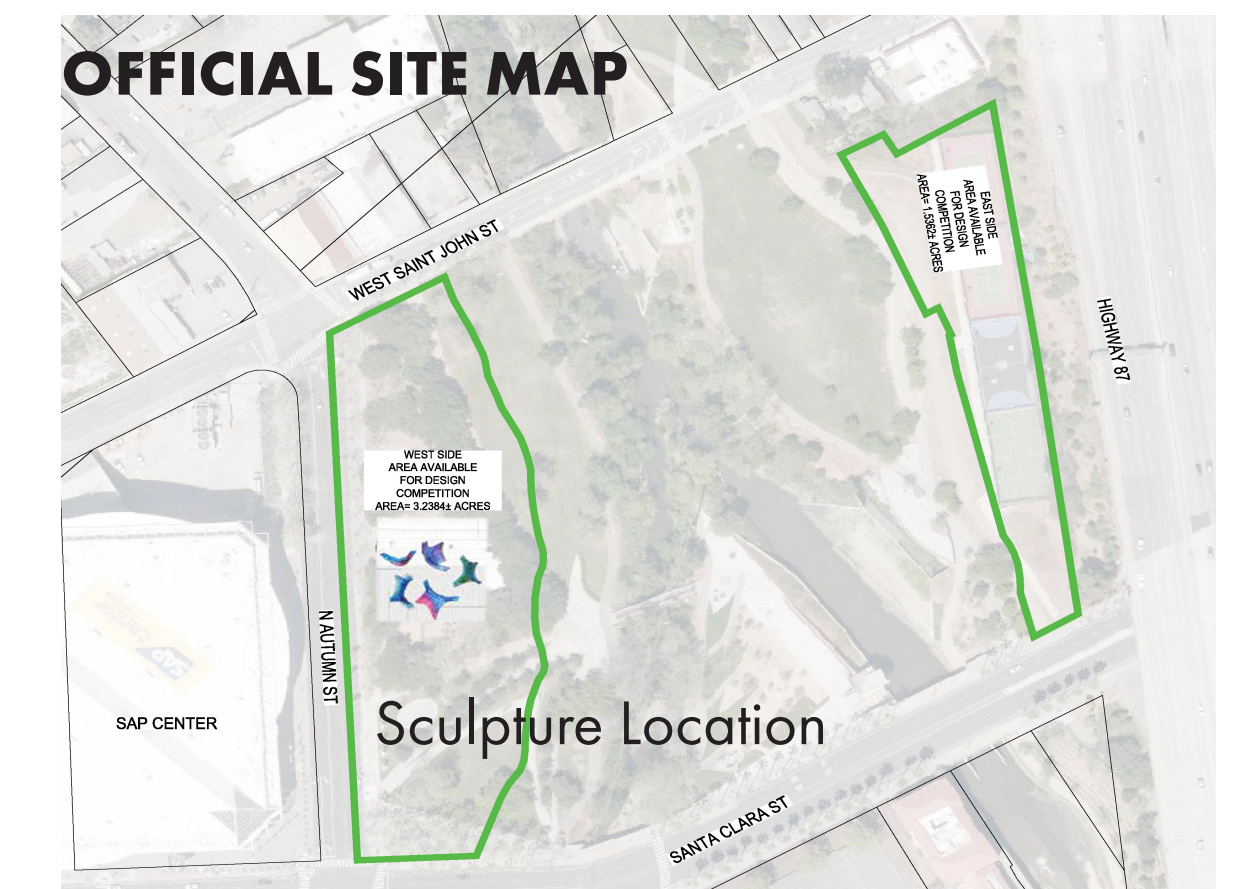


ART PROPOSAL CONVERGENCE



CONCEPT STATEMENT

Convergence is a series of monumental sculptures created to emulate organic forms. The artwork is intended to be an epicenter for generative dialogue and innovation, where grand ideas and technical mastery, converge. **Convergence** represents the gravitational pull of Silicon Valley, bringing the brightest and most curious into its orbit. Satellite images of Silicon Valley and iconic symbols are embedded into the glass panels, representing the region's world-class high-tech innovation. Photo Vitec technology will be implanted into the glass and the sculpture will operate using renewable energy, ensuring a net zero design. The artwork transforms the space into a multicolored celebration of what Silicon Valley represents, a lasting ideal that acts as a bridge between the past, present, and future.





SUMMARY

Convergence is a sculpture series of Herculean size, created with the intent to inspire and motivate innovation. The iconic structures at their tallest measure 80 feet high, with an approximate width of 35ft, overlook the vast San Jose landscape. The sculpture is constructed using Architectural Art Glass.

Architectural Art Glass is laminated/tempered glass, which meets the safety codes required for the skyscraper glass curtain wall. The colors of each panel are permanently bonded. The glass can withstand earthquakes of magnitude 8. The artwork features an interactive light experience, inviting the audience to engage with the site and offering visitors a platform for creativity.