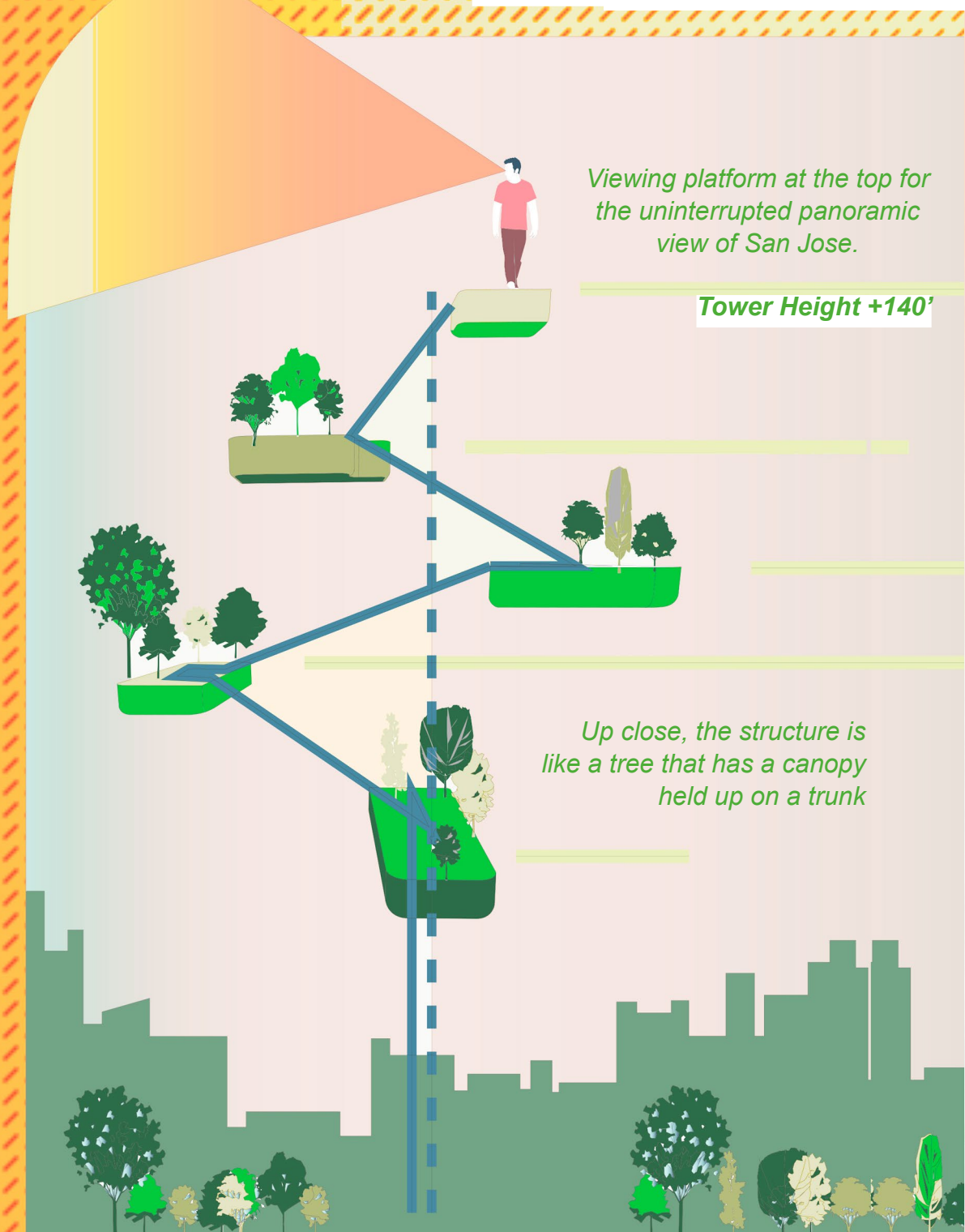


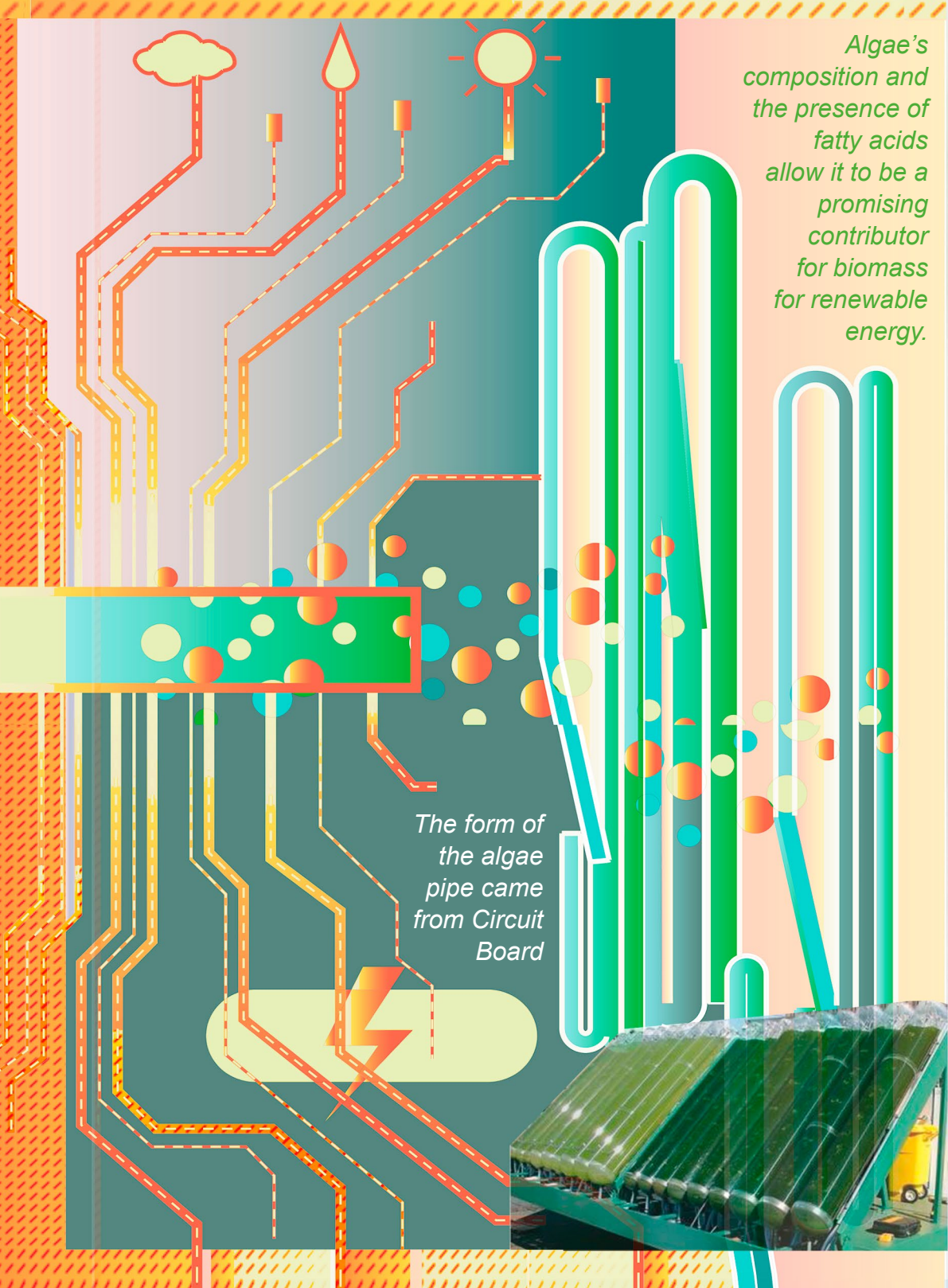
# Design Concept

The Tower is a cluster of gardens and leisure spaces elevated 140ft from ground.



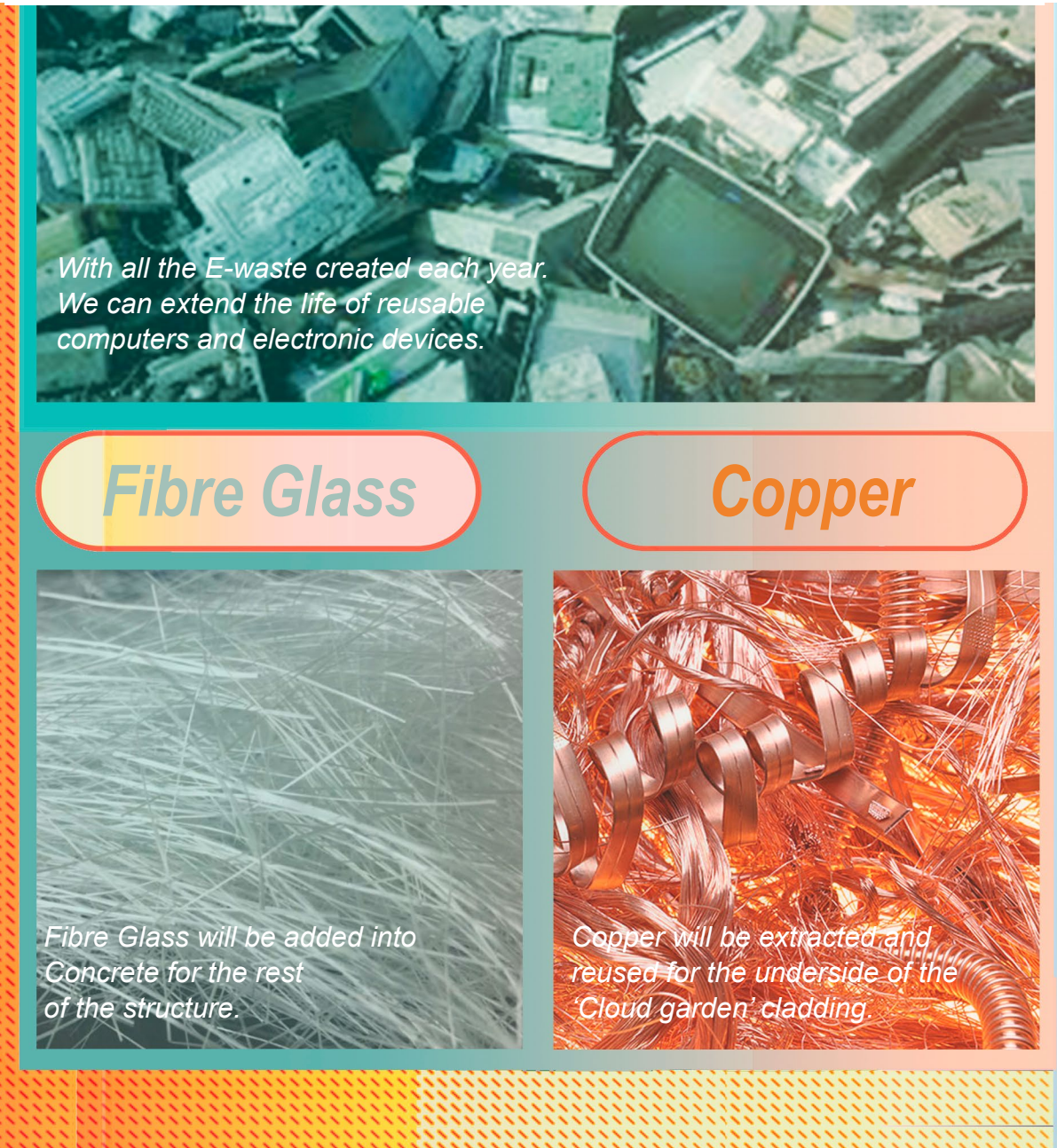
## Energy System

To achieve net-zero energy, the tower is powered and ornamented by algae pipes, it is a bioreactor system where microalgae are cultivated.

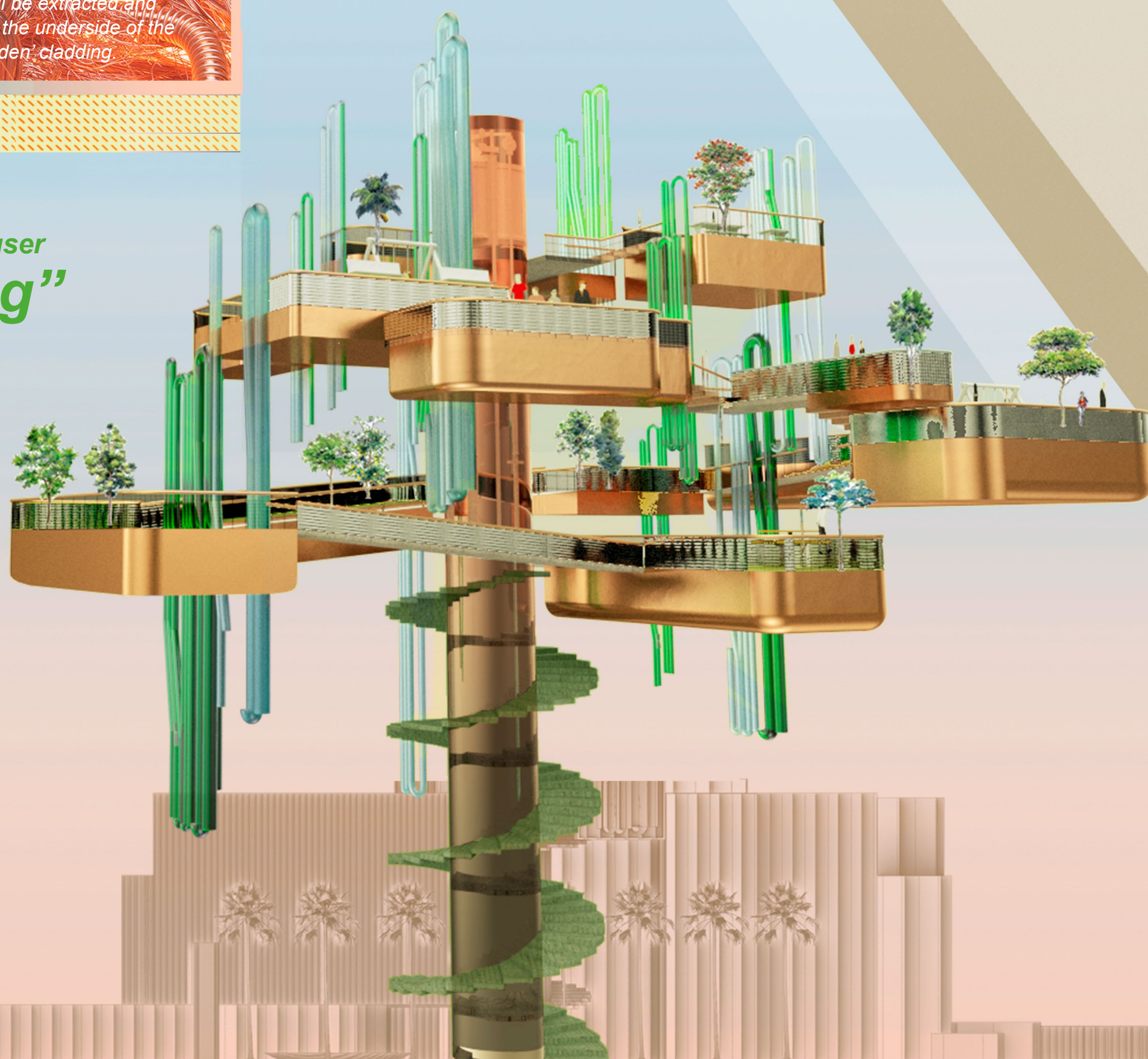


## Construction Material

SJ as a lead in tech world. This is an opportunity to showcase to the world how E-waste can be contributed to the community and built environment harmoniously.



The beautiful panoramic view for user is the **"Copper lining"** for all the hard work they contributed to the Silicon Valley.



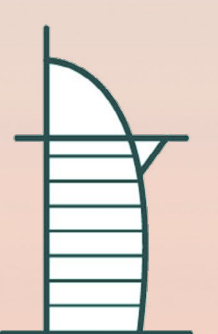
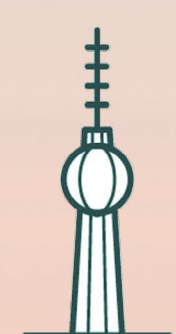
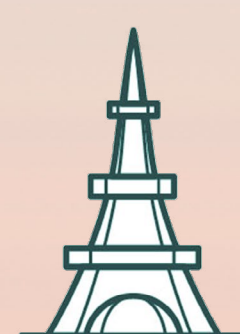
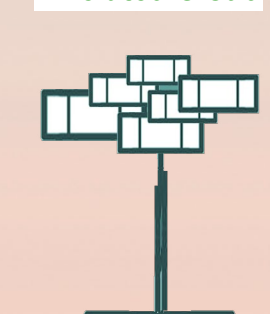
From far the tower contributes to the San Jose's skyline as a

Green **"Pixelated Cloud"** and is seen hovering over the park.



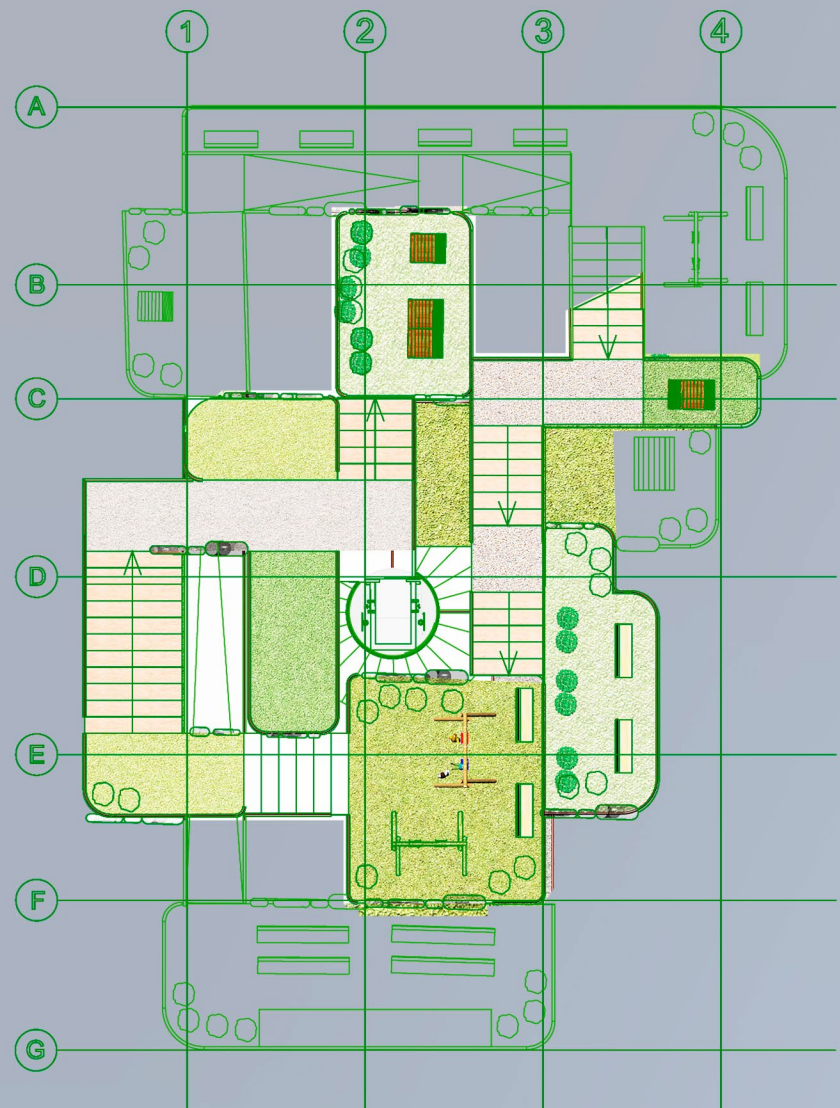
## Landmark from all over the world

San Jose  
Pixelated Cloud





Plan



Garden in a range of sizes



<30 people  
Grassland



<20 people  
Playground



<10 people  
Sun Deck

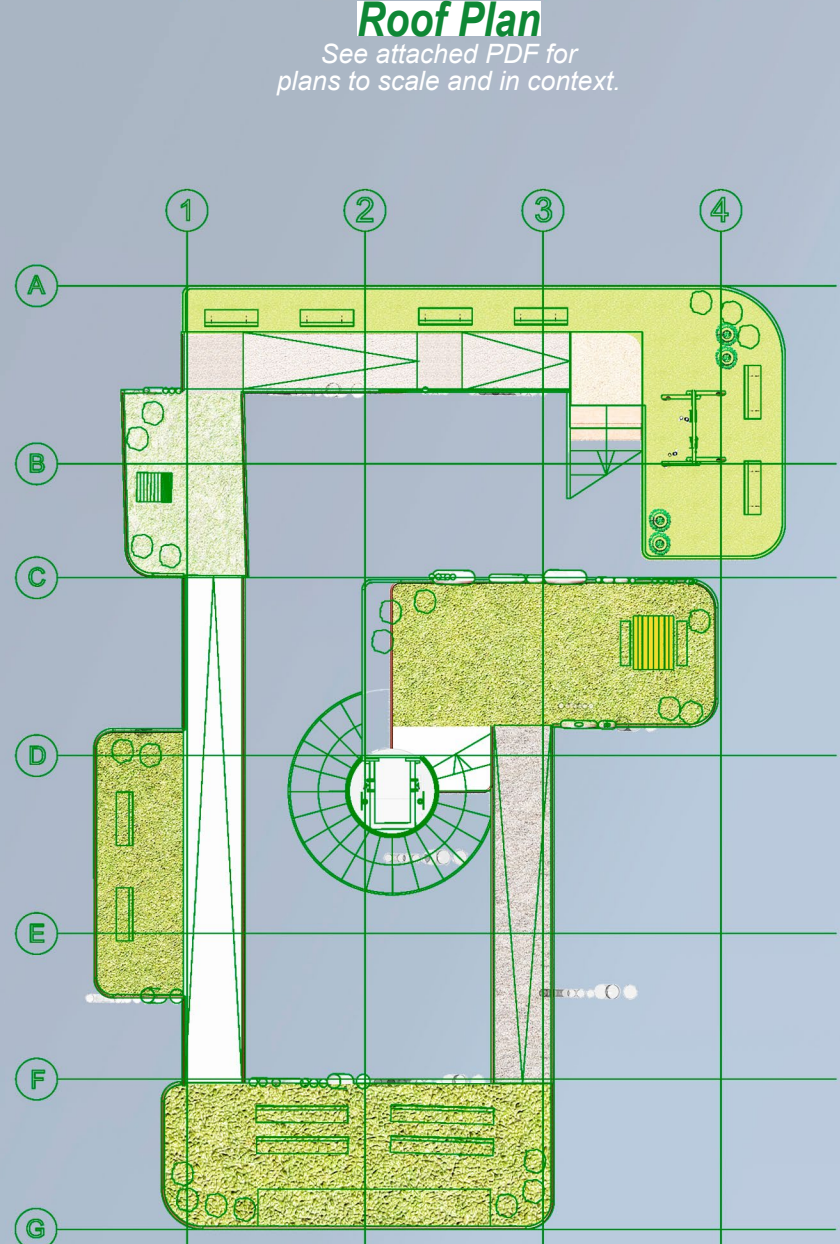


<3-5 people  
Balcony

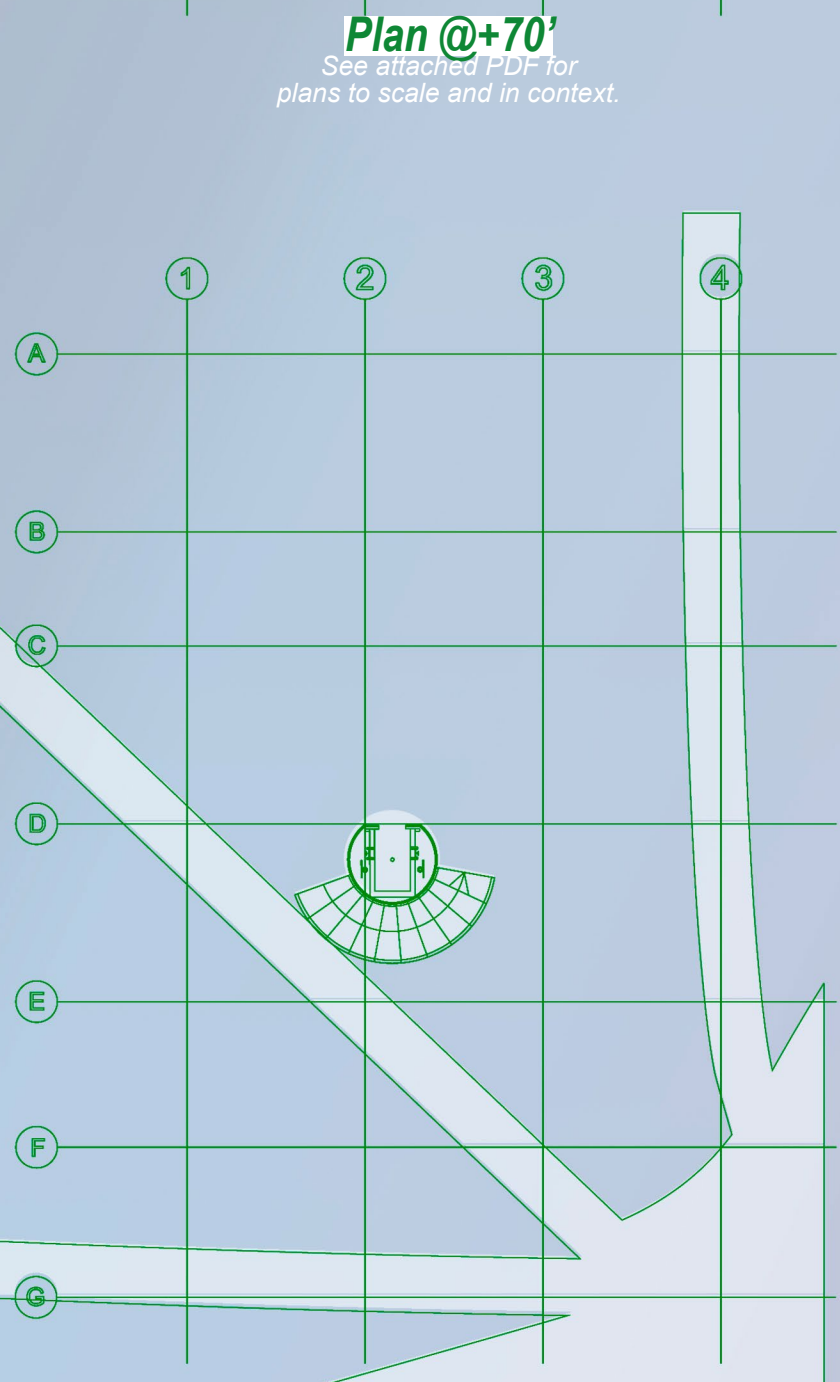


Greenery along the ramp and walkway

Walkway



Roof Plan  
See attached PDF for plans to scale and in context.



Plan @+70'  
See attached PDF for plans to scale and in context.

Plan @+10'  
See attached PDF for plans to scale and in context.

Site

See attached PDF for plans to scale and in context.



Redefine zones to improve the usage of the park and compliment the new SJ Light tower



Adding Seating  
Proposing to add seatings next to Tennis Court would promote the park as a more enjoyable gathering place.



Amphitheatre  
San Jose is lacking of an open air performance space. With the addition of an Amphitheatre it would improve the footfall to the park



Art & Craft's Market  
Located adjacent to the main road makes it very accessible for a market place which celebrate works from local artist.



SJ Light Tower  
'Pixelated Cloud'



User analysis to evaluate what facilities best suit the park